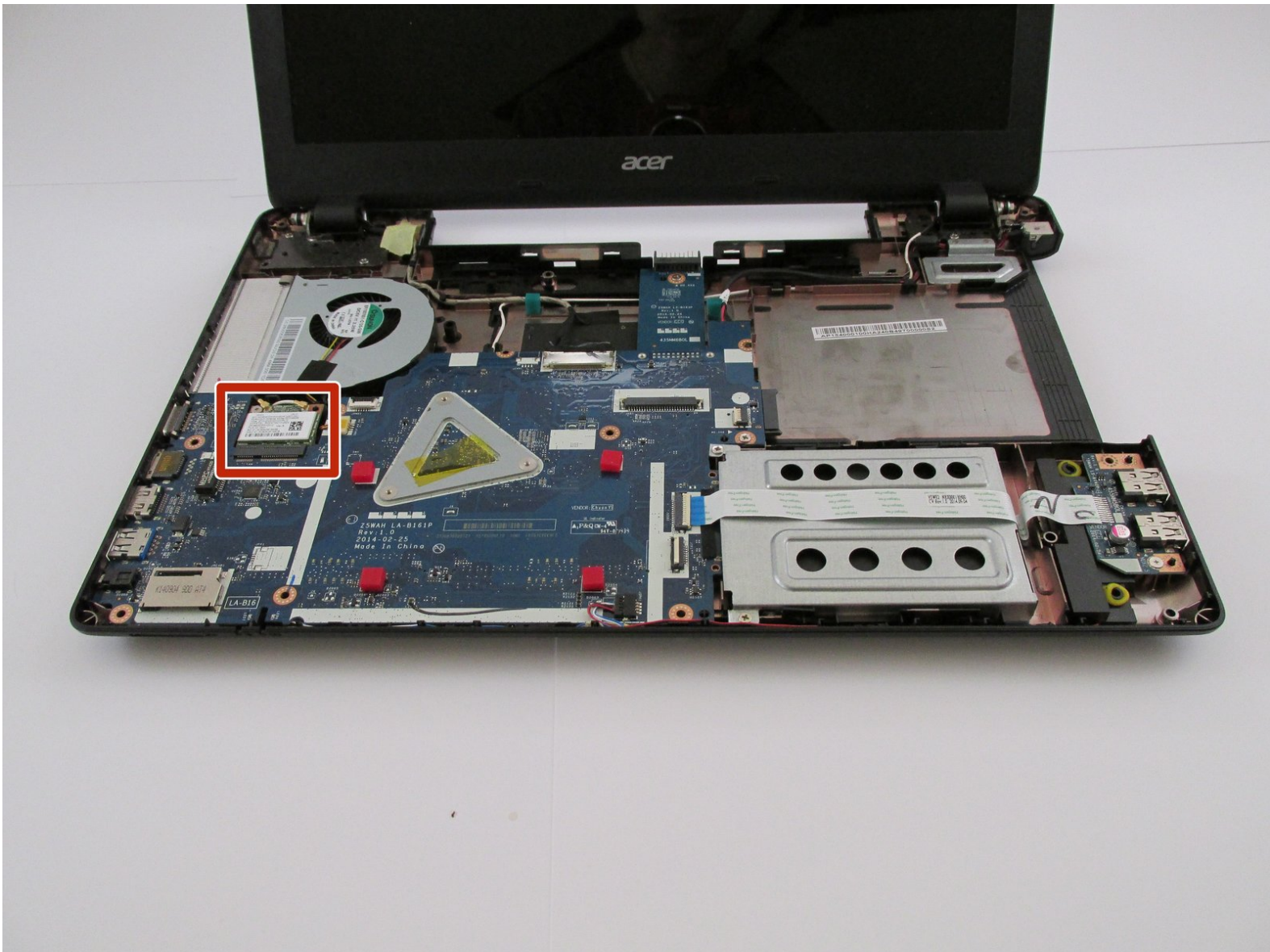




# Acer Aspire E5-571 WiFi Replacement

This guide will show you how to replace the WiFi in the Acer Aspire E5-571.

Written By: daniel sawyer



# INTRODUCTION

Without WiFi you can have a hard time getting connected to the internet. This guide will show you how to replace a broken internal WiFi card.

---

## TOOLS:

- [Metal Spudger](#) (1)
  - [iFixit Opening Tools](#) (1)
  - [Phillips #0 Screwdriver](#) (1)
-

## Step 1 — Battery



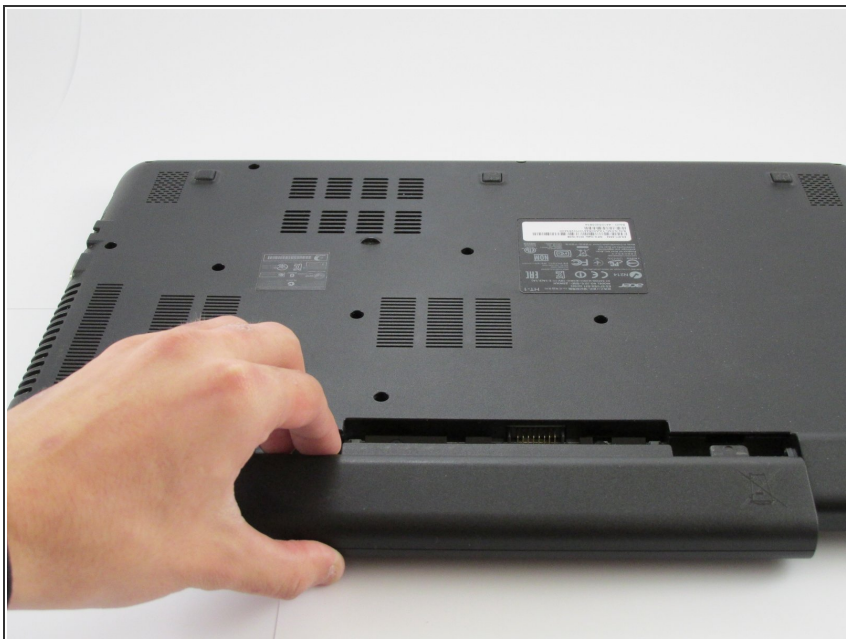
- ⚠ Make sure the laptop is shut down.
- Flip the laptop upside down with the battery facing towards your body and locate the battery lock circled in red.

## Step 2



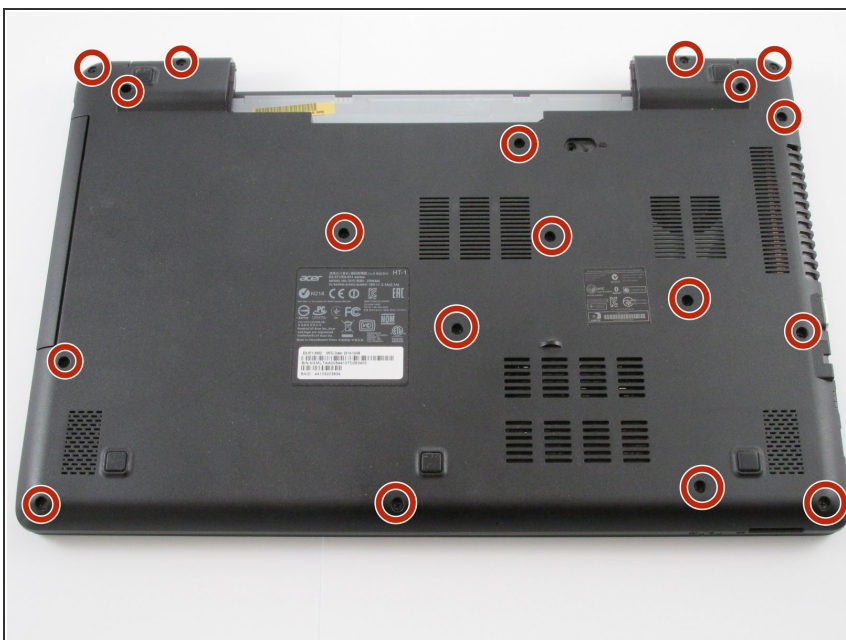
- Use a small screwdriver or pen and place it into the battery lock as shown.
- Gently slide it to the left until you hear the battery release.

## Step 3



- Pull the battery towards your body as shown in the picture.

## Step 4 — Keyboard



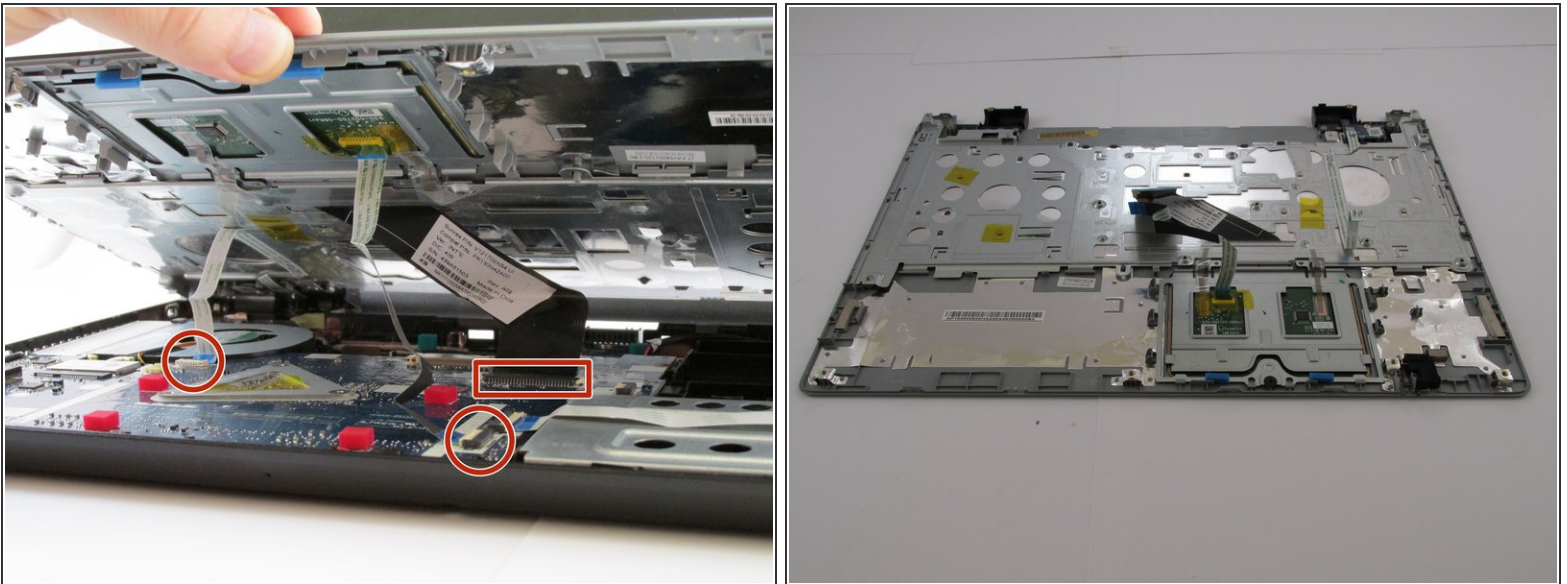
- Remove all eighteen 8 mm Phillips #0 screws with a Phillips #0 screwdriver and set aside.
- ⓘ All of these screws are identical, 8 mm, Phillips #0 screws.

## Step 5



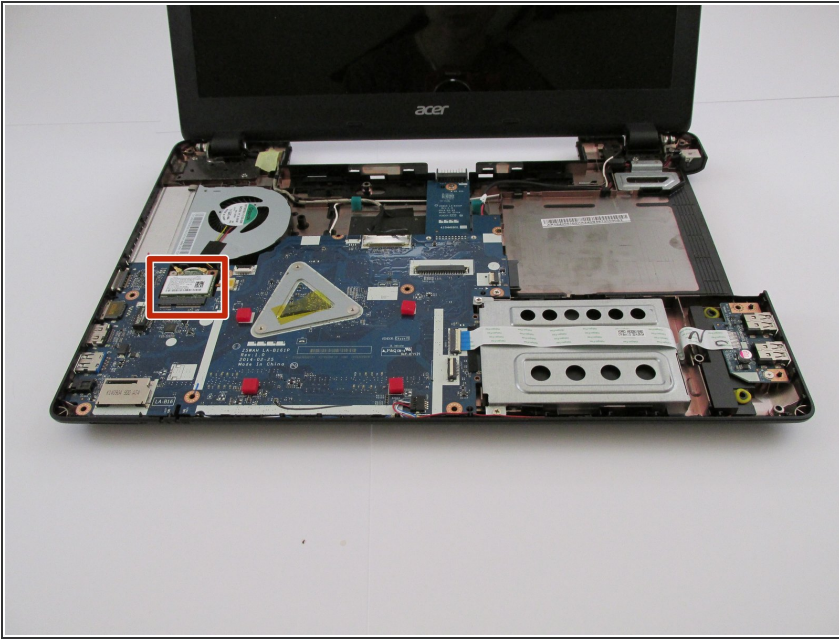
- Move around the edge with metal spudger and carefully pry apart the keyboard.
  - Be careful not to break the plastic clips.
- ⚠ Once all edges are loose, do not remove the keyboard until after next step!

## Step 6



- Carefully detach the three ZIF ribbons connected to the motherboard by flipping up the white hinge.
- Lift up on the keyboard and the whole top should come right off, including the touchpad.

## Step 7 — WiFi



- Locate the WiFi card on the motherboard.

## Step 8



- Locate the two antenna cables shown.
- Using a plastic opening tool, remove both antenna cables from the WiFi card by gently prying them up.
- ⓘ Black on left. White on right.

This document was generated on 2020-04-01 04:27:04 AM (MST).

## Step 9



- Remove this 3 mm Phillips #0 screw and the WiFi card should pop up.
- ⚠ Make sure antenna cables are removed before removing the screw.
- Gently lift WiFi card off of the motherboard.

To reassemble your device, follow these instructions in reverse order.