



# Acer Aspire ES1-111M-C7DE RAM Replacement

This guide will show you how to successfully remove and replace the RAM in your laptop.

Written By: Mason Devinney



## INTRODUCTION

To replace the RAM is an in-depth procedure as it's located under the motherboard. There are a lot of screws from the various parts but they're all the same size so it doesn't matter where they go back in.

---

### TOOLS:

- [JIS #0 Screwdriver](#) (1)
  - [iFixit Opening Tools](#) (1)
-

## Step 1 — Back Cover



- Unscrew the 13 6.2mm screws located on the bottom of the laptop using the JIS #0 screwdriver.

## Step 2



- Using a plastic opening tool, gently pry the lower case off. Place aside.

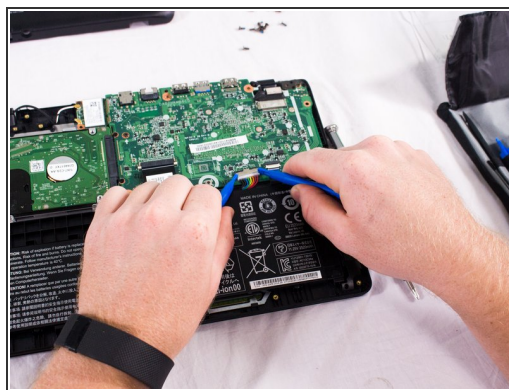
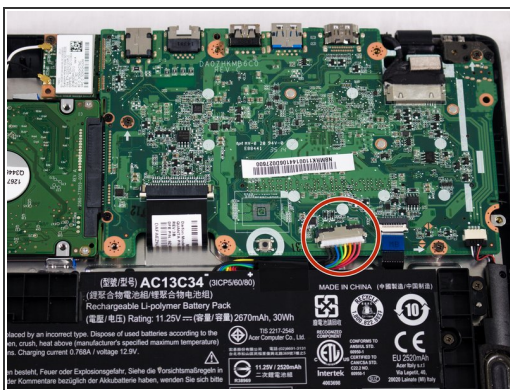


## Step 3 — Battery



- Locate the small black button surrounded by a white circle near the battery on the motherboard.
- Press and hold the button for five seconds.

## Step 4



- Using your fingers or the small plastic opening tools, disconnect the battery connection from the motherboard by pinching and pulling back on both sides of the connector.



## Step 5



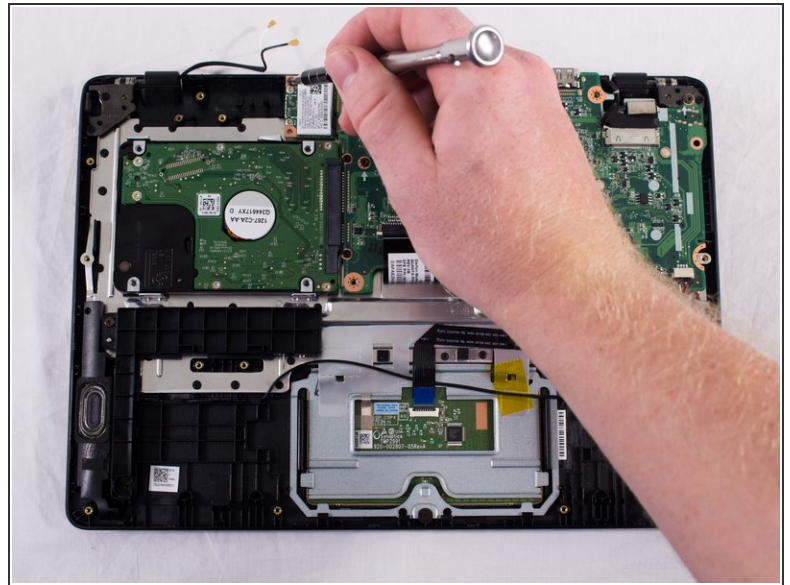
- Locate the two 6.2mm black screws holding the battery in place and unscrew them.
- Gently lift and remove the battery.

## Step 6 — Hard Drive



- Locate the hard drive and slide the hard drive to the left until it disconnects from the mother board.

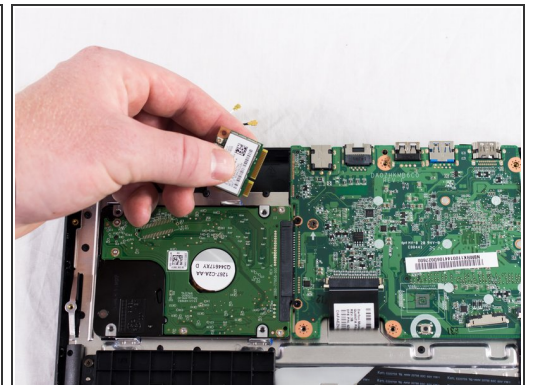
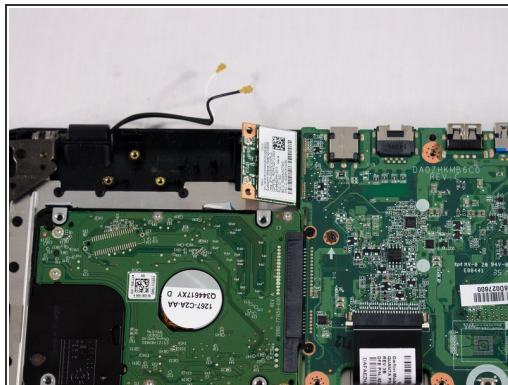
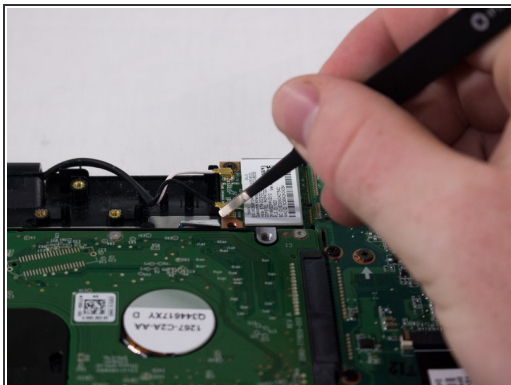
## Step 7 — Network Card



**i** You will see a white rectangular piece next to the upper left-hand corner of the motherboard that is connected with a black cord and a white cord; this is the network card.

- Unscrew the one 6.2mm screw in the upper left-hand corner of the network card.

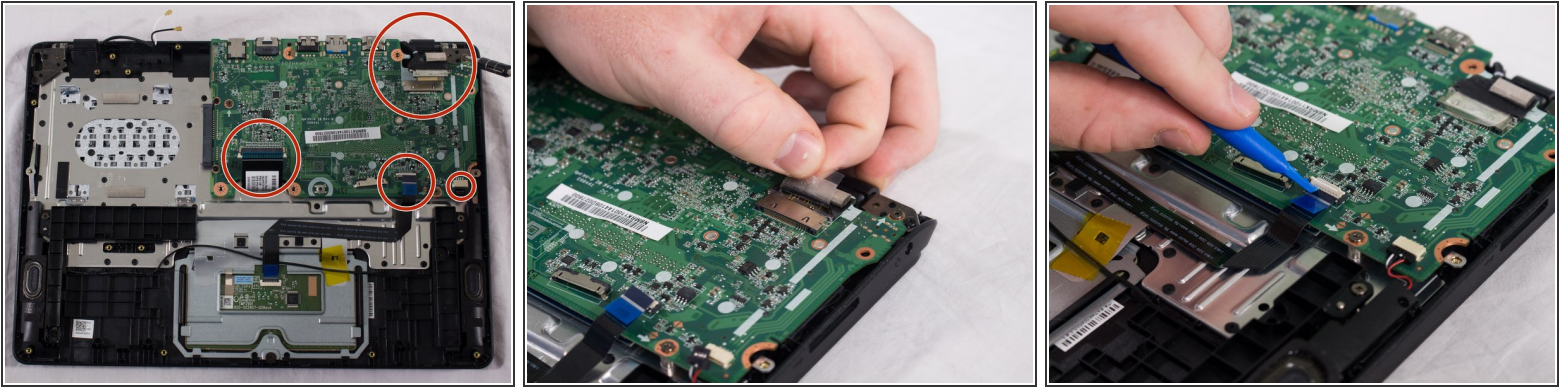
## Step 8



- Remove the black and the white cords from the network card.
- Slide the card out of the motherboard and replace it with the new one.

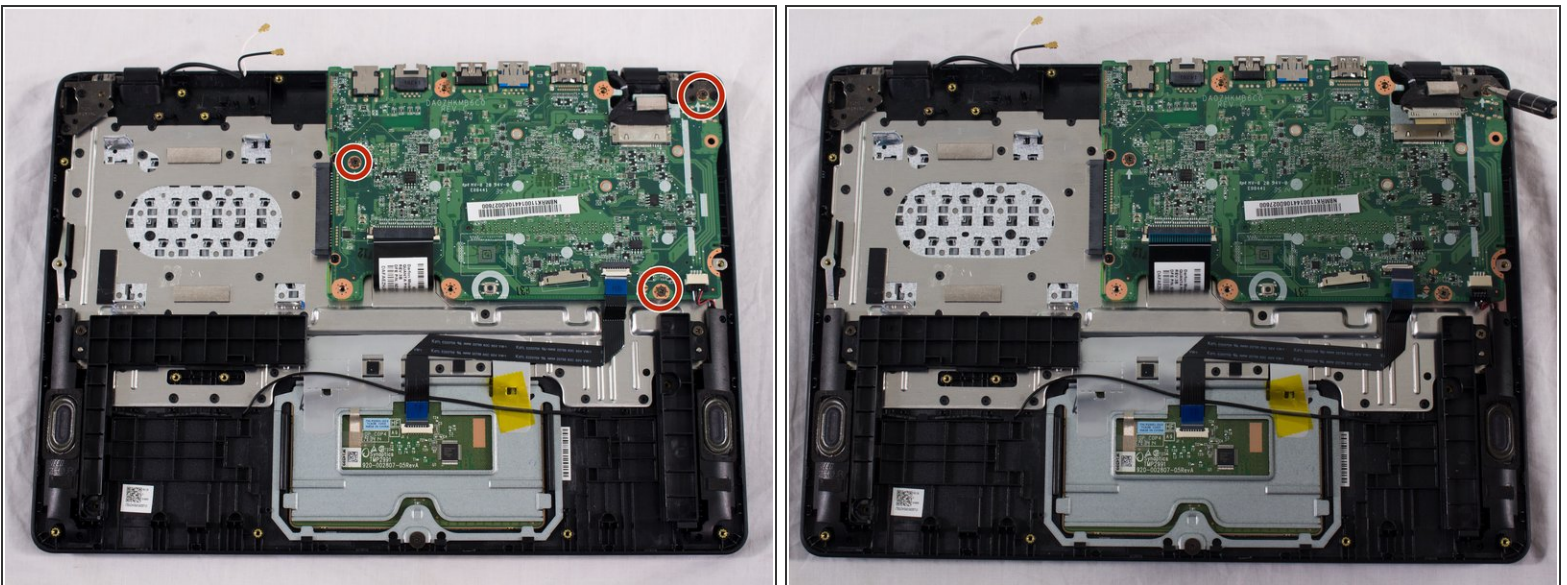


## Step 9 — RAM



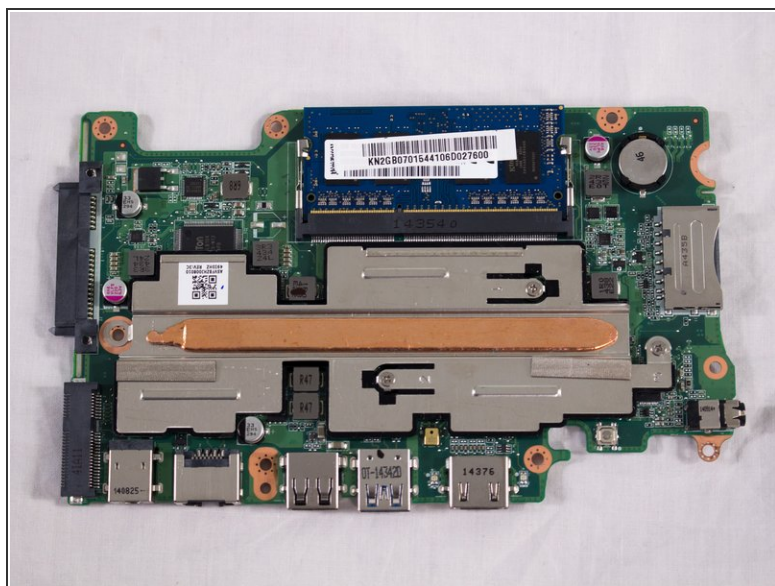
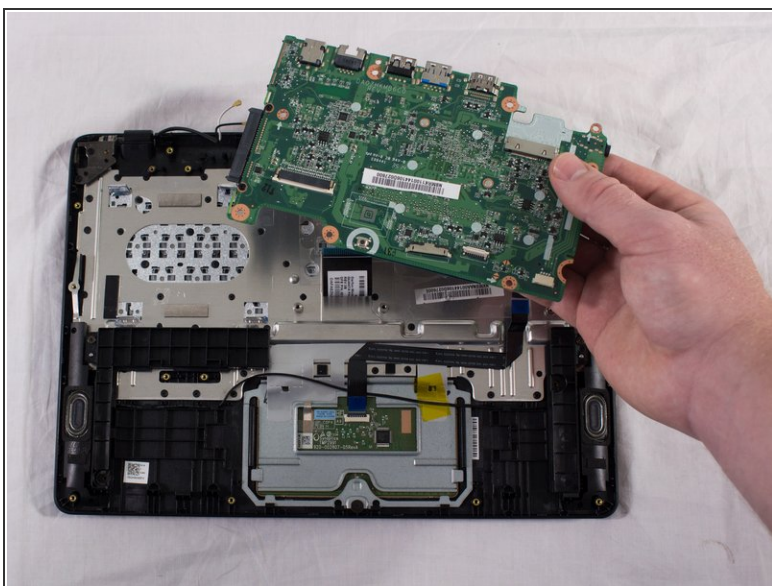
- Disconnect the remaining connectors from the motherboard.

## Step 10



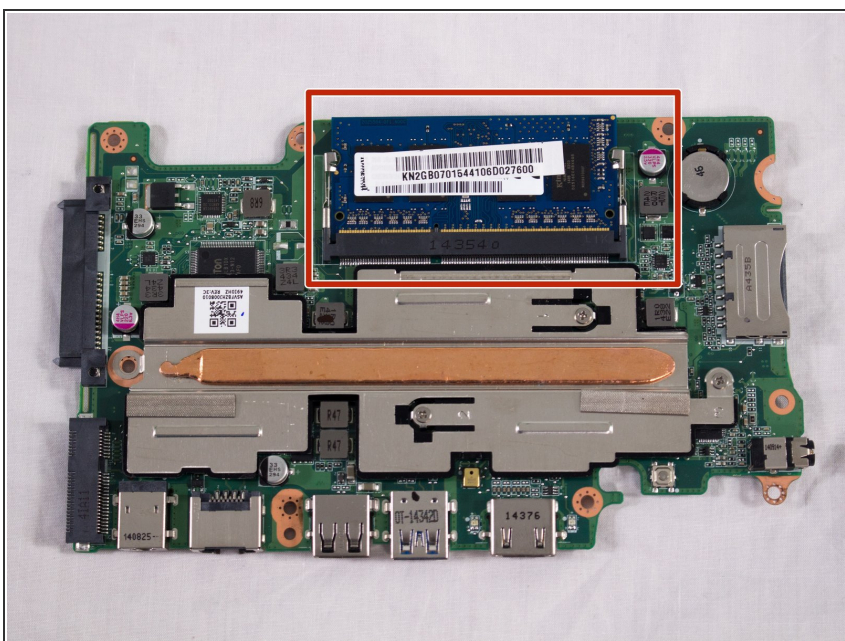
- Unscrew the three 6.2mm screws as indicated by the picture.

## Step 11



- Flip the motherboard over.

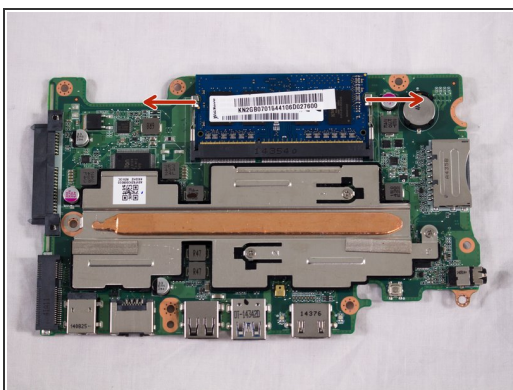
## Step 12



- Locate the RAM

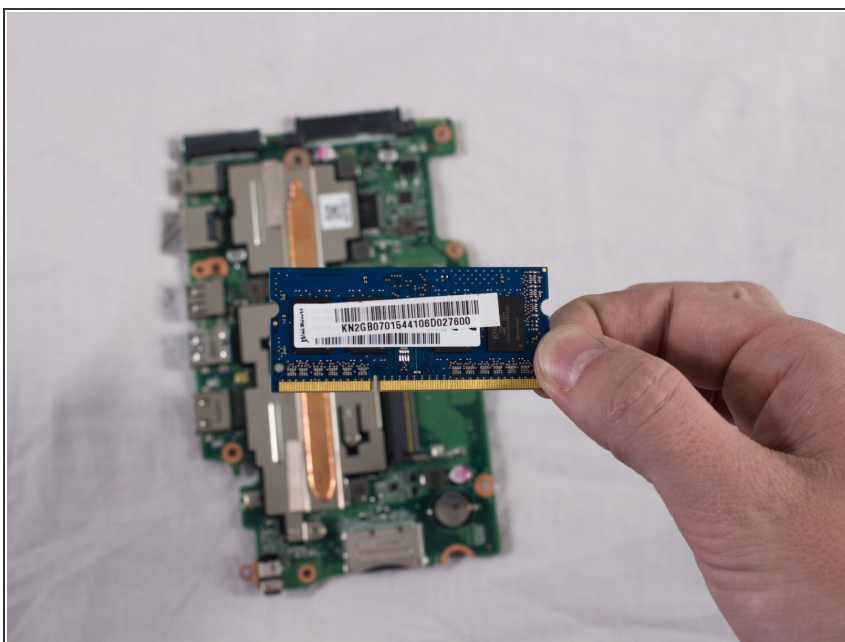


## Step 13



- Gently push the two metal clips that hold the RAM to the side, as indicated by the picture.
- It should pop up once done.

## Step 14



- Pull the RAM out.

To reassemble your device, follow these instructions in reverse order.