



Acer Aspire ES1-332 LCD Screen Replacement

Quick guide on how to replace the LCD screen. Repair takes around 10min.

Written By: Nick Myers

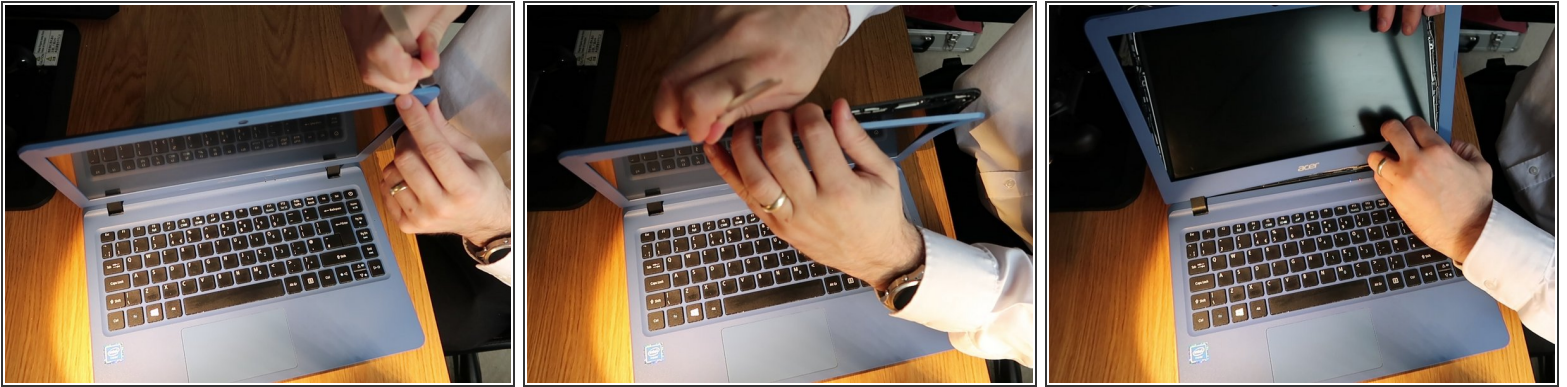




TOOLS:

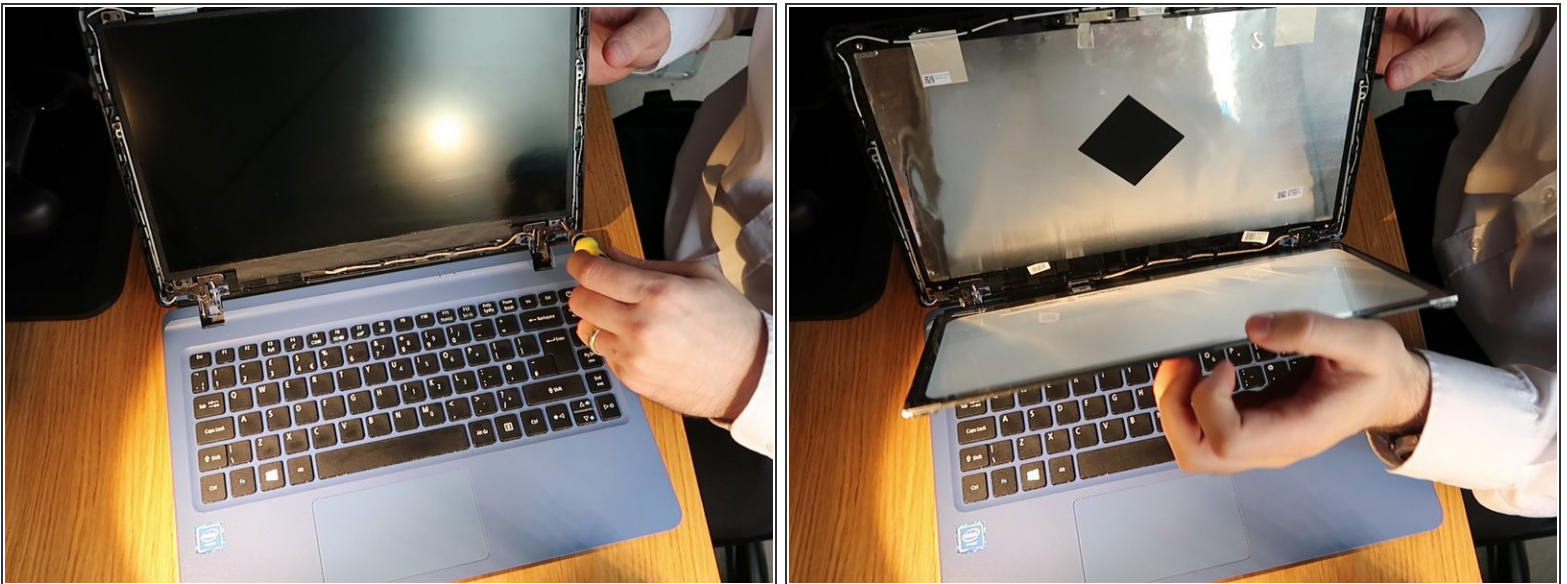
- [Phillips #00 Screwdriver](#) (1)
 - [Metal Spudger](#) (1)
-

Step 1 — LCD Screen



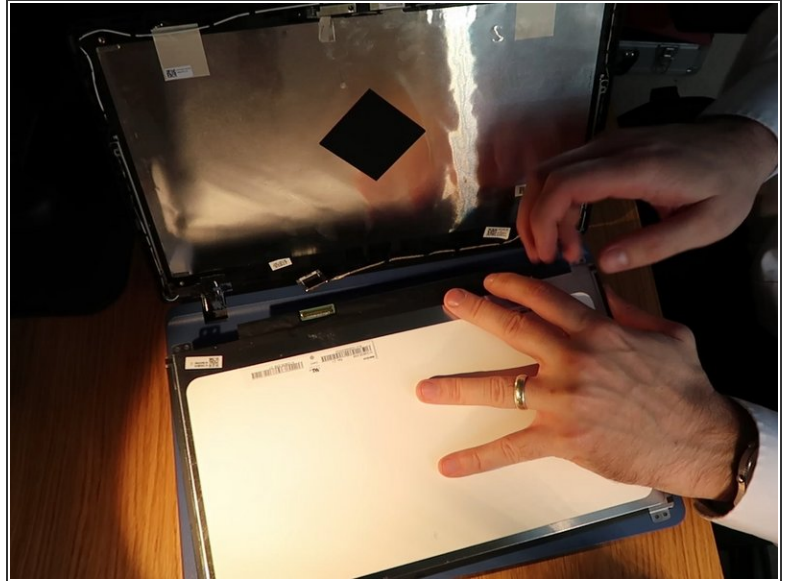
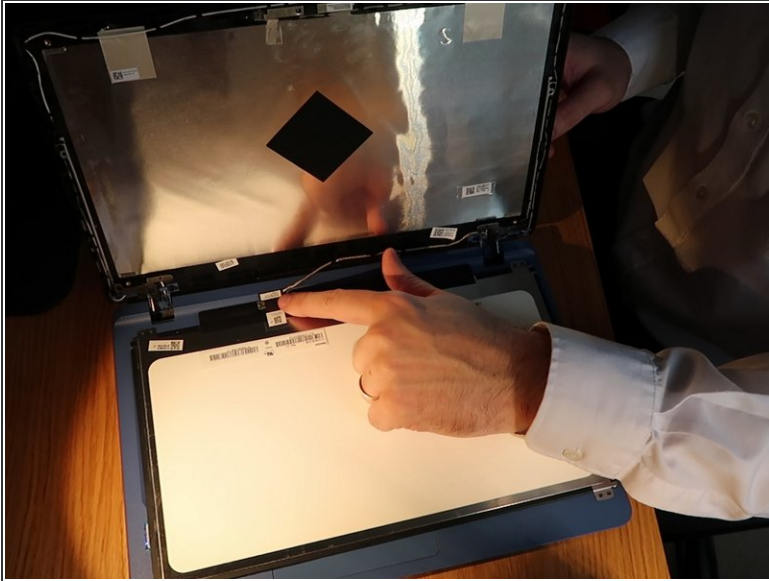
- Grab a spudger and work your way around the outer edge of the screen
- Lean the screen all the way back to remove the plastic frame from the hinges at the bottom

Step 2



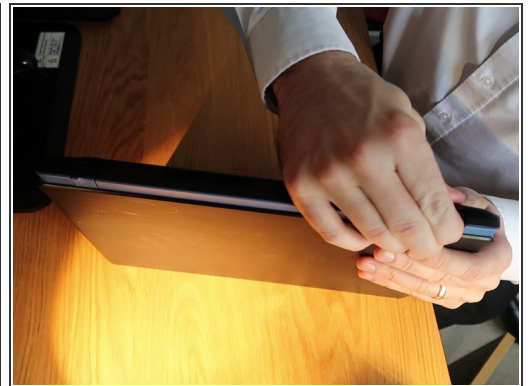
- Unscrew the 4 screws around the edge of the screen
- Lean the screen all the way forward on to the keyboard

Step 3



- Peel up the sticky tape next to the screen connector
- Pull the connector down carefully away from the screen and disconnect it

Step 4



- connect the new screen and screw back in place
- Turn on the screen to test before putting the screen frame back on
- Tilt the screen all the way back and push the frame back on hinges 1st.
- Finally lean the laptop on its edge and clip the back on the hinges back in place.