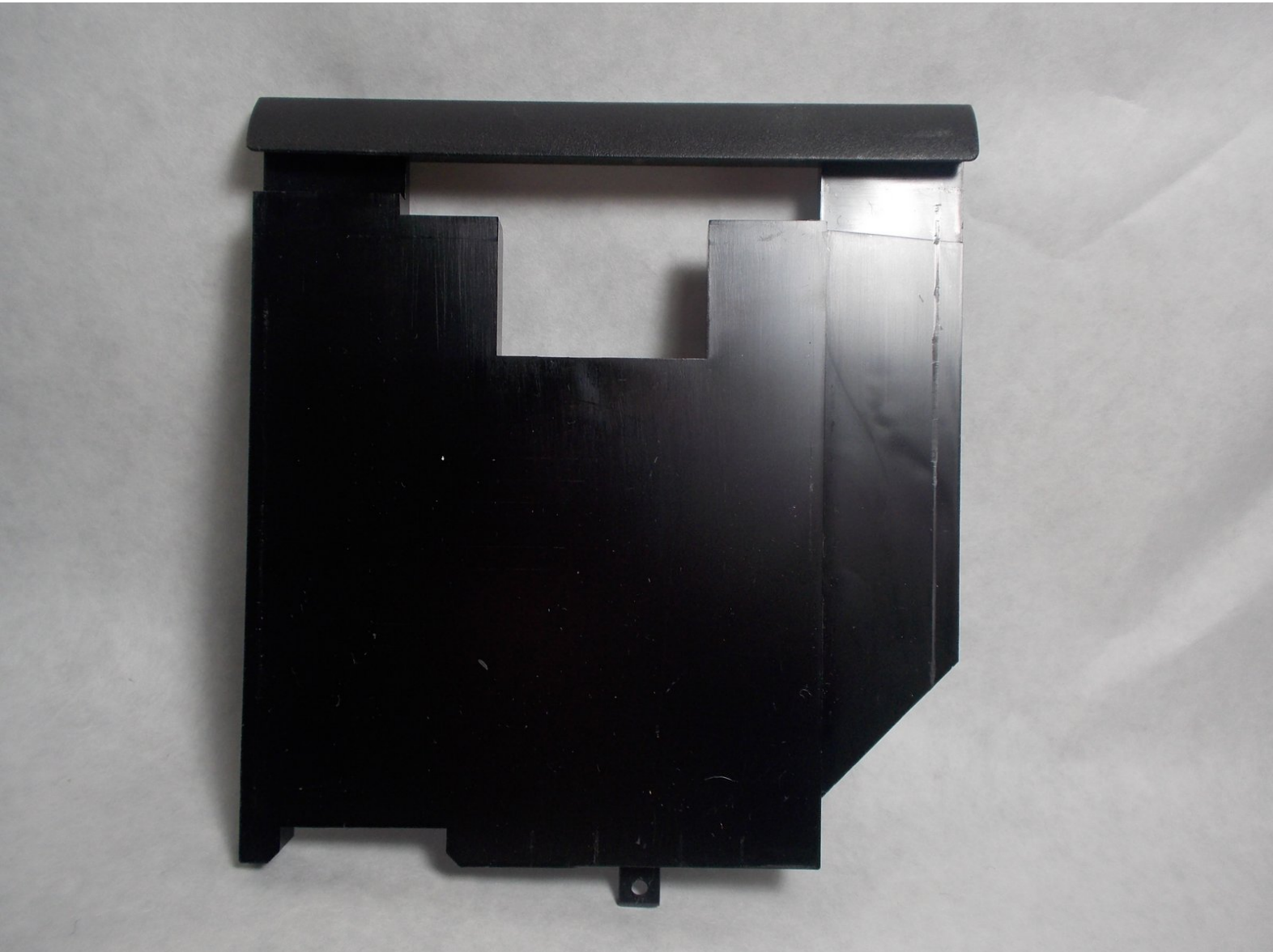




Acer Aspire ES1-512-C80E Disk Drive Replacement

How to replace the disk drive in an Acer Aspire ES1-512-C80E laptop.

Written By: Peter Bulman



INTRODUCTION

You may need to replace the disk drive in your Acer Aspire ES1-512-C80E if it does not function properly. To access the disk drive, the back cover of the device will need to be removed. The process of replacing the disk drive should take between 10-20 minutes.



TOOLS:

- [Phillips #000 Screwdriver](#) (1)
- [Metal Spudger](#) (1)
- [iFixit Opening Tools](#) (1)
- [Phillips #00 Screwdriver](#) (1)



PARTS:

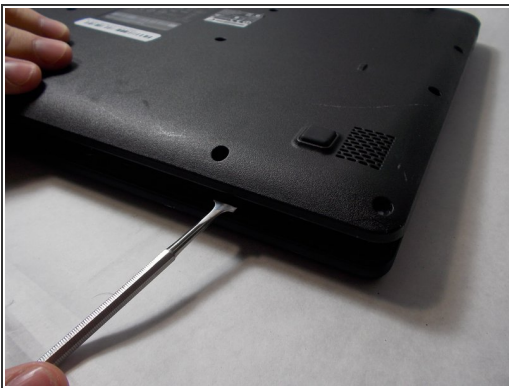
- [Acer Aspire ES1 512 Disk Drive](#) (1)

Step 1 — Back Cover



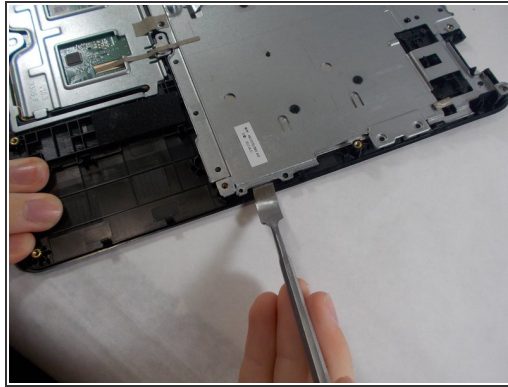
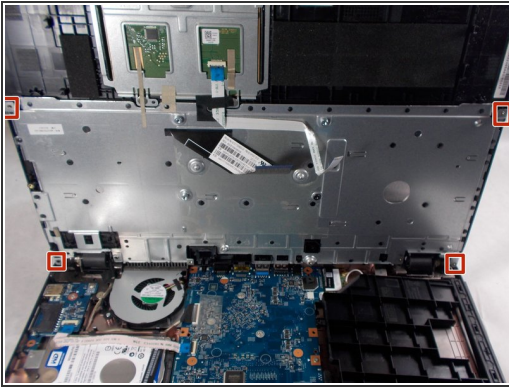
- Place the device upside down on a flat surface.
- Using a Phillips #00 screwdriver, remove all nineteen 1.2mm screws that secure the bottom cover of the device.





Step 2



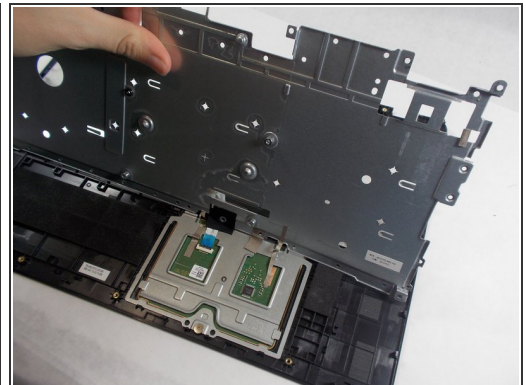
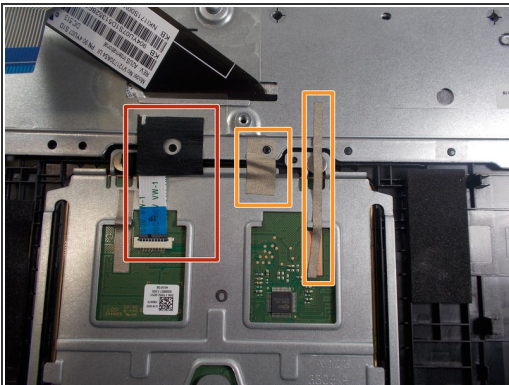
- Pry around the edges with a spudger to remove the back cover.
- i** The two hinges on the back require additional force to be popped open.





Step 3 — Keyboard



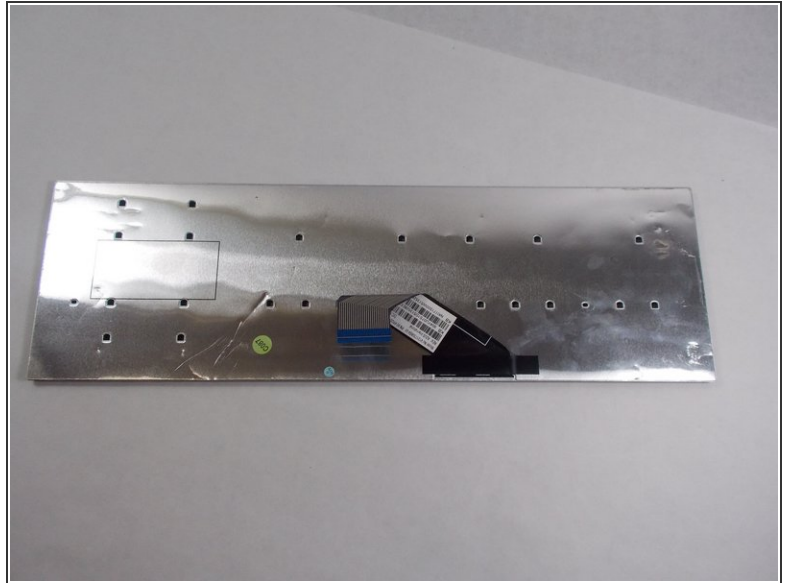
-  The keyboard is the silver piece located by itself on the upper half of the laptop.
-  Using a Phillips #00 screwdriver, remove the four 1.2mm screws from the keyboard.
-  Using a spudger, go around the edges and pry off the keyboard.
-  All black clips will have to be removed before the keyboard can be removed.

Step 4



-  Remove the ribbon cable connection from the keyboard.
-  Peel back the two pieces of tape to separate the keyboard.
-  Remove the keyboard from under the plastic covering.
-  Remove the silver plate back cover of the keyboard from the bottom base.

Step 5



- Remove the large silver plate from the keyboard.
- ❗ You can not remove the silver backing with the attached wire from the back of the keyboard.

Step 6



- The keyboard is removed and ready to be replaced.

Step 7 — Disk Drive



- Push the disk drive out of the side slot.

To reassemble your device, follow the steps in reverse order.