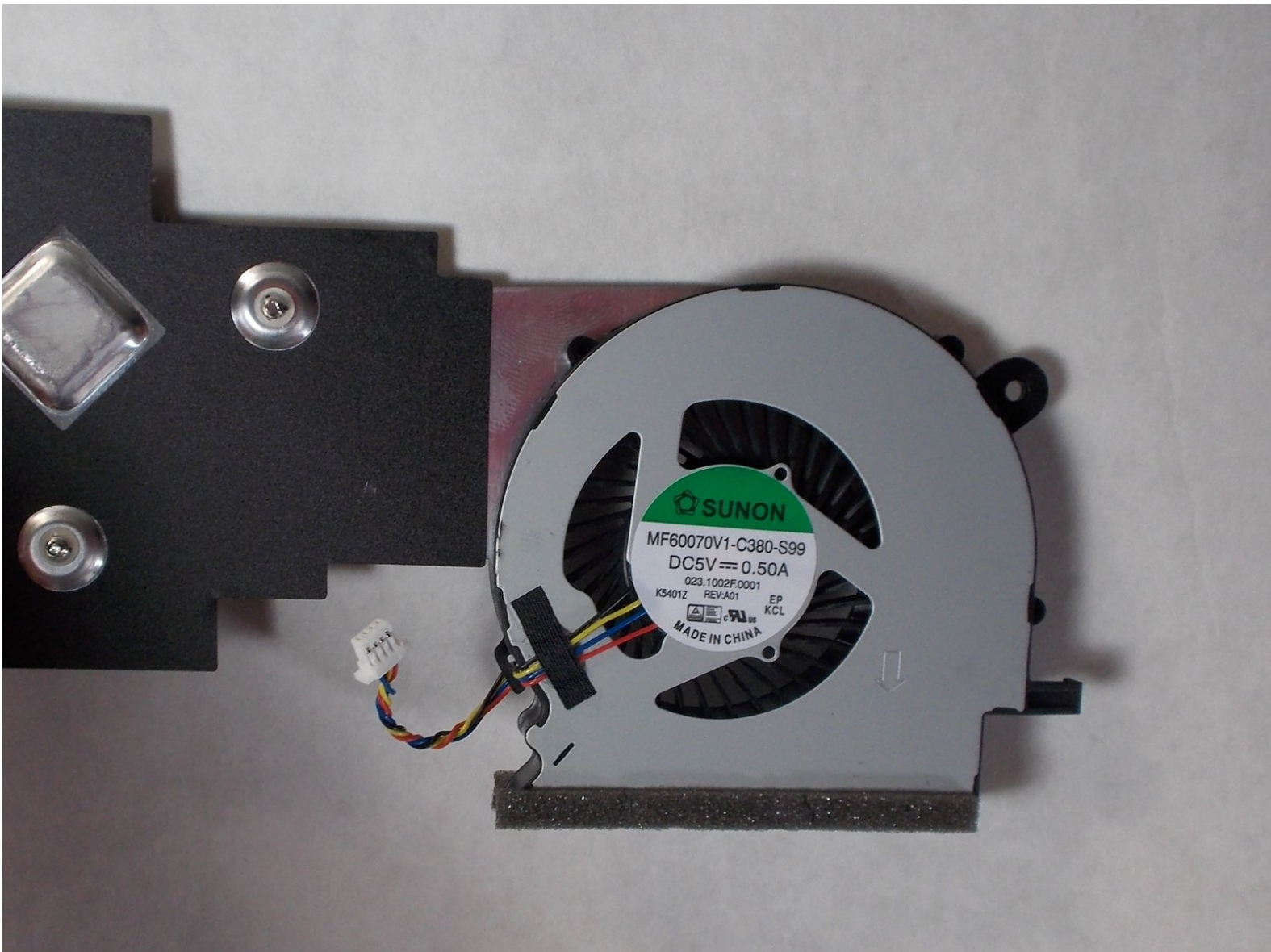




Acer Aspire ES1-512-C80E Fan Replacement

How to replace the fan in an Acer Aspire ES1-512-C80E laptop.

Written By: Robert Creighton



INTRODUCTION

You may need to replace the fan in your Acer Aspire ES1-512-C80E if you experience problems such as overheating or loud noises. To do this, you will need Phillips #00/#000 screwdrivers, and a spudger. Additionally, you will need a replacement fan. To access the fan, the back cover of the device will need to be removed. The process of replacing the fan should take between 15-25 minutes.



TOOLS:

- [Metal Spudger](#) (1)
- [Phillips #00 Screwdriver](#) (1)
- [Phillips #000 Screwdriver](#) (1)
- [iFixit Opening Tools](#) (1)



PARTS:

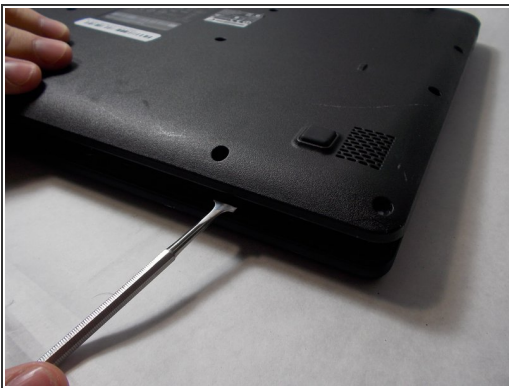
- [Laptop Cooling Fan - 13N0-P1A0K11](#) (1)

Step 1 — Back Cover



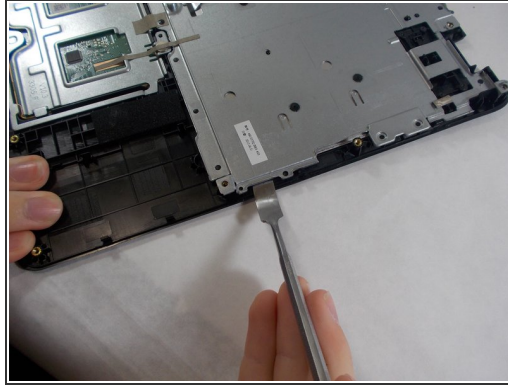
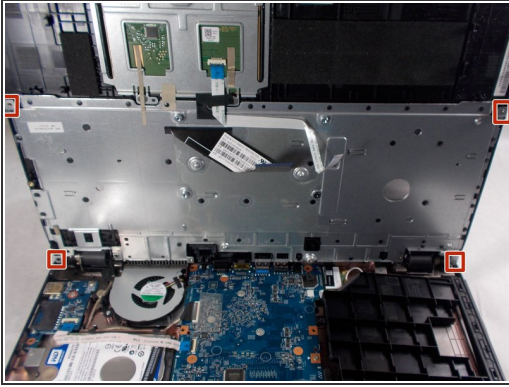
- Place the device upside down on a flat surface.
- Using a Phillips #00 screwdriver, remove all nineteen 1.2mm screws that secure the bottom cover of the device.





Step 2



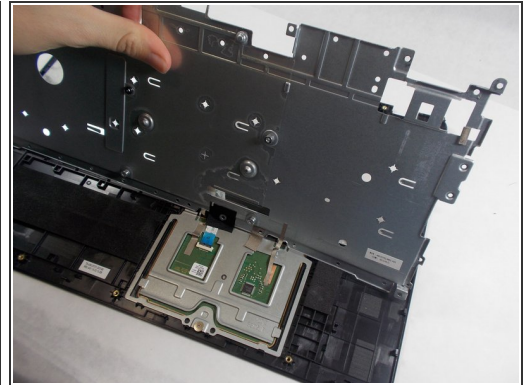
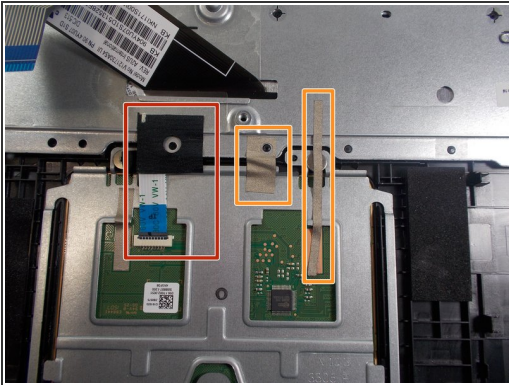
- Pry around the edges with a spudger to remove the back cover.
- i** The two hinges on the back require additional force to be popped open.





Step 3 — Keyboard



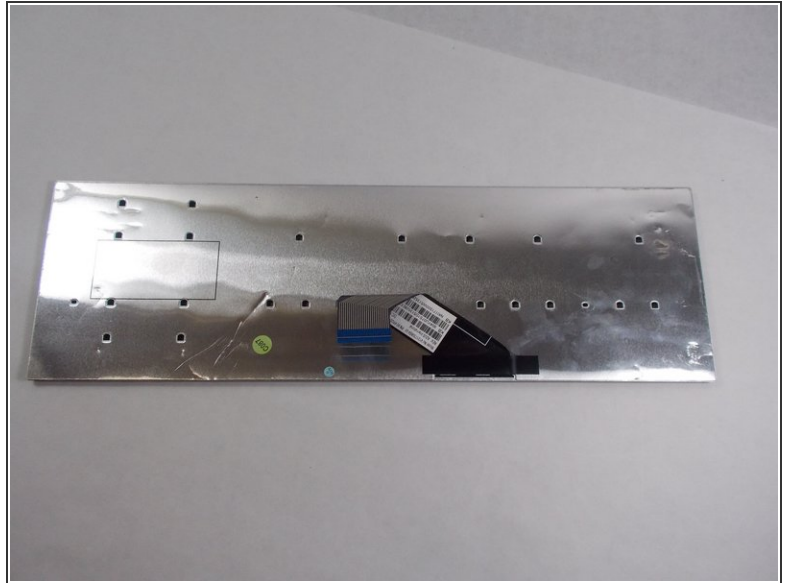
-  The keyboard is the silver piece located by itself on the upper half of the laptop.
-  Using a Phillips #00 screwdriver, remove the four 1.2mm screws from the keyboard.
-  Using a spudger, go around the edges and pry off the keyboard.
-  All black clips will have to be removed before the keyboard can be removed.

Step 4



-  Remove the ribbon cable connection from the keyboard.
-  Peel back the two pieces of tape to separate the keyboard.
-  Remove the keyboard from under the plastic covering.
-  Remove the silver plate back cover of the keyboard from the bottom base.

Step 5



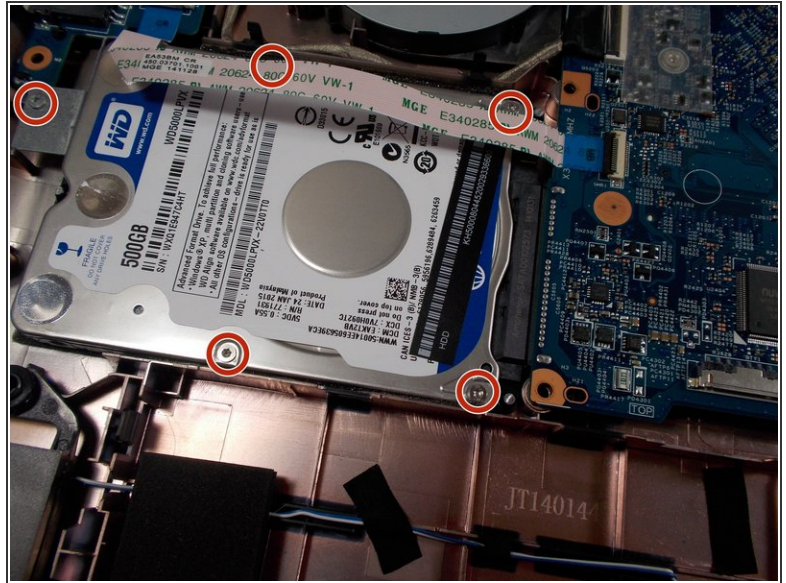
- Remove the large silver plate from the keyboard.
- ❗ You can not remove the silver backing with the attached wire from the back of the keyboard.

Step 6



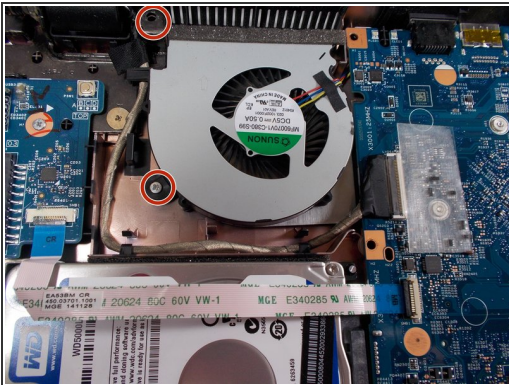
- The keyboard is removed and ready to be replaced.

Step 7 — Fan



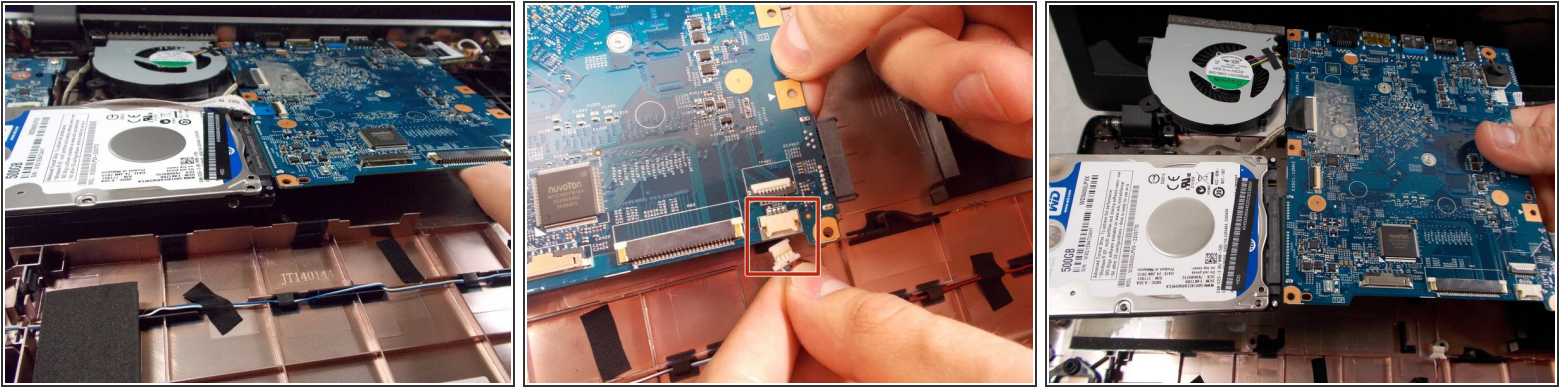
- Remove twelve 1.2mm Phillips #000 screws from the motherboard, wireless LAN card, and hard drive.

Step 8



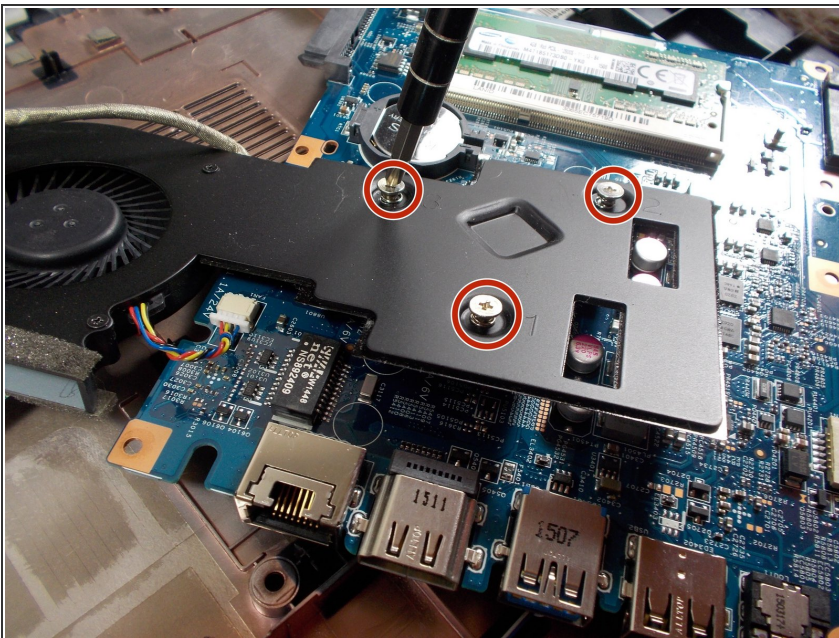
- Using a Phillips #000 screwdriver, remove both 1.2mm screws that hold the fan in place.

Step 9



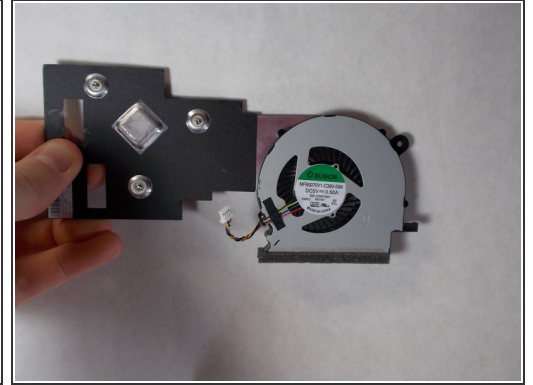
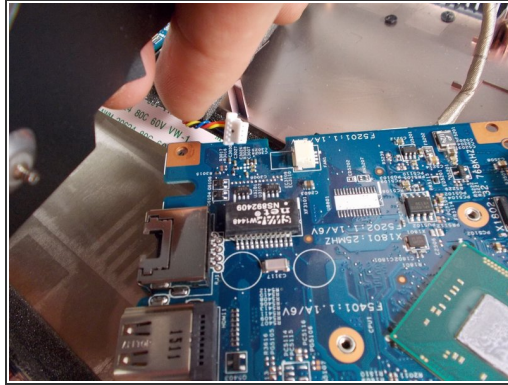
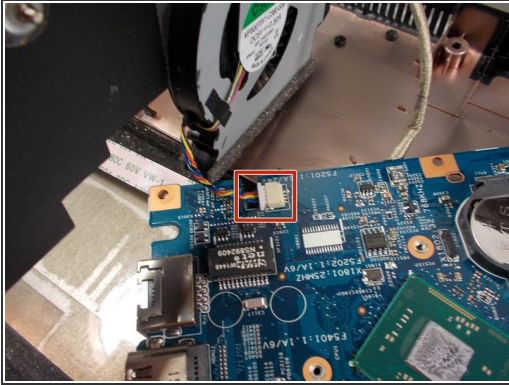
- Lift the fan, hard drive, motherboard, and wireless LAN card out of the device.
- These components are still connected with wires. Remove all plugs that may be attached to other components in order to isolate the group of components.

Step 10



- Flip over the motherboard.
- Remove all three 1.2mm Phillips #00 screws that attach the fan to the motherboard.

Step 11



- The fan and motherboard are still connected with wires. Remove any plugs that may be attaching the components
- Remove the fan from the motherboard.

To reassemble your device, follow these instructions in reverse order.