



Acer Aspire ES1-512-C80E Hard Drive Replacement

How to replace the hard drive in an Acer Aspire ES1-512-C80E laptop.

Written By: Robert Creighton



INTRODUCTION

You may need to replace the hard drive in your Acer Aspire ES1-512-C80E if you experience problems regarding the device's storage. To do this, you will need Phillip's #00/#000 screwdrivers, and a spudger. Additionally, you will need a replacement hard drive. To access the hard drive, the back cover of the device will need to be removed. The process of replacing the battery should take between 15-25 minutes.



TOOLS:

- [Metal Spudger](#) (1)
- [Phillips #00 Screwdriver](#) (1)
- [Phillips #000 Screwdriver](#) (1)
- [iFixit Opening Tools](#) (1)



PARTS:

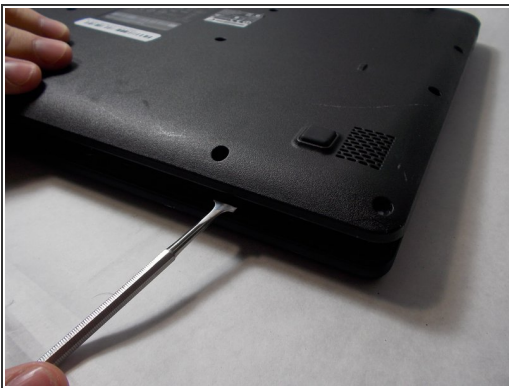
- [500 GB 5400 RPM Western Digital - Scorpio Blue SATA-II Hard Drive](#) (1)

Step 1 — Back Cover



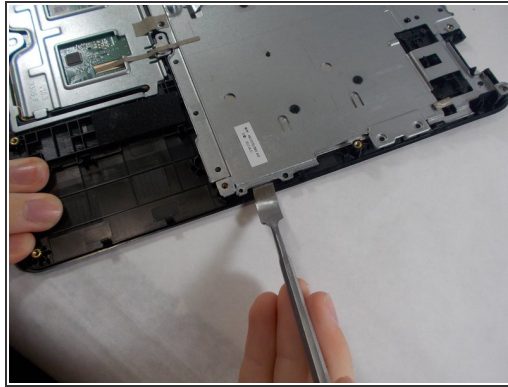
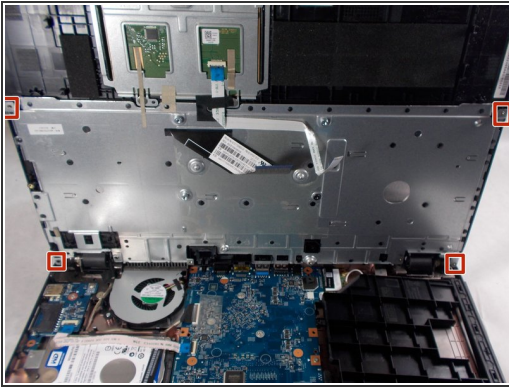
- Place the device upside down on a flat surface.
- Using a Phillips #00 screwdriver, remove all nineteen 1.2mm screws that secure the bottom cover of the device.

Step 2



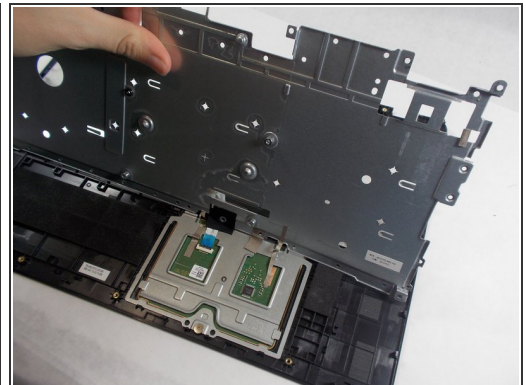
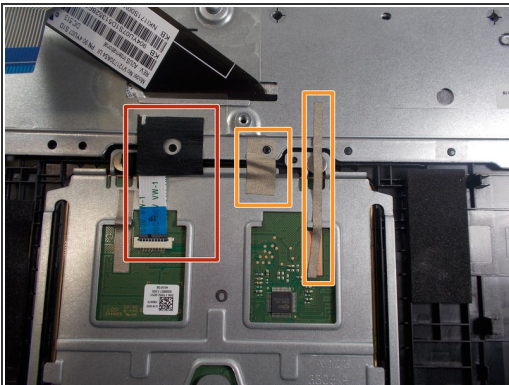
- Pry around the edges with a spudger to remove the back cover.
- i** The two hinges on the back require additional force to be popped open.

Step 3 — Keyboard



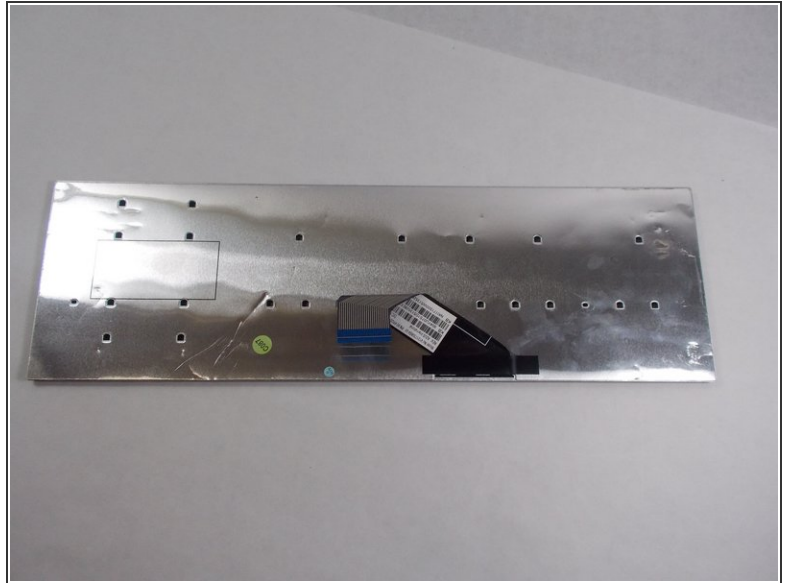
- i The keyboard is the silver piece located by itself on the upper half of the laptop.
- Using a Phillips #00 screwdriver, remove the four 1.2mm screws from the keyboard.
- Using a spudger, go around the edges and pry off the keyboard.
- i All black clips will have to be removed before the keyboard can be removed.

Step 4



- Remove the ribbon cable connection from the keyboard.
- Peel back the two pieces of tape to separate the keyboard.
- Remove the keyboard from under the plastic covering.
- Remove the silver plate back cover of the keyboard from the bottom base.

Step 5



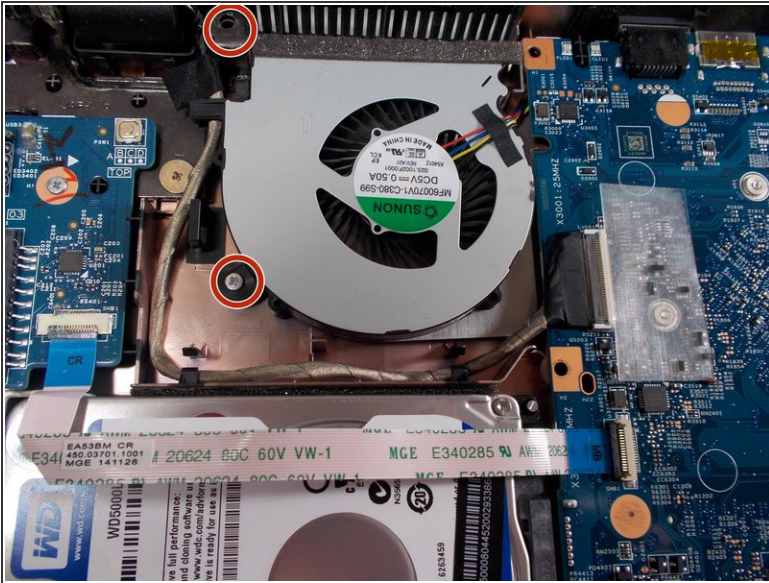
- Remove the large silver plate from the keyboard.
- ⓘ You can not remove the silver backing with the attached wire from the back of the keyboard.

Step 6



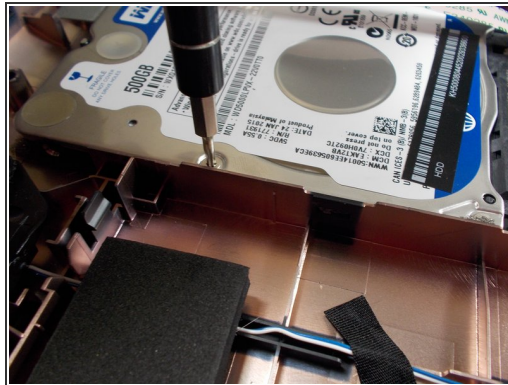
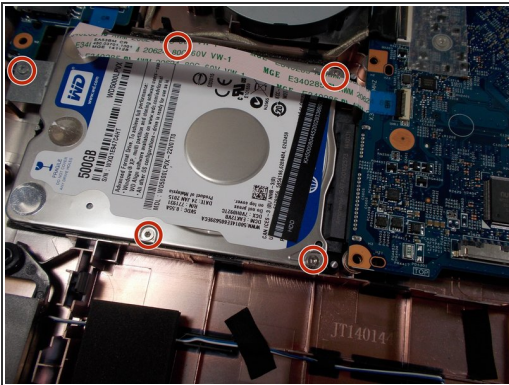
- The keyboard is removed and ready to be replaced.

Step 7 — Hard Drive



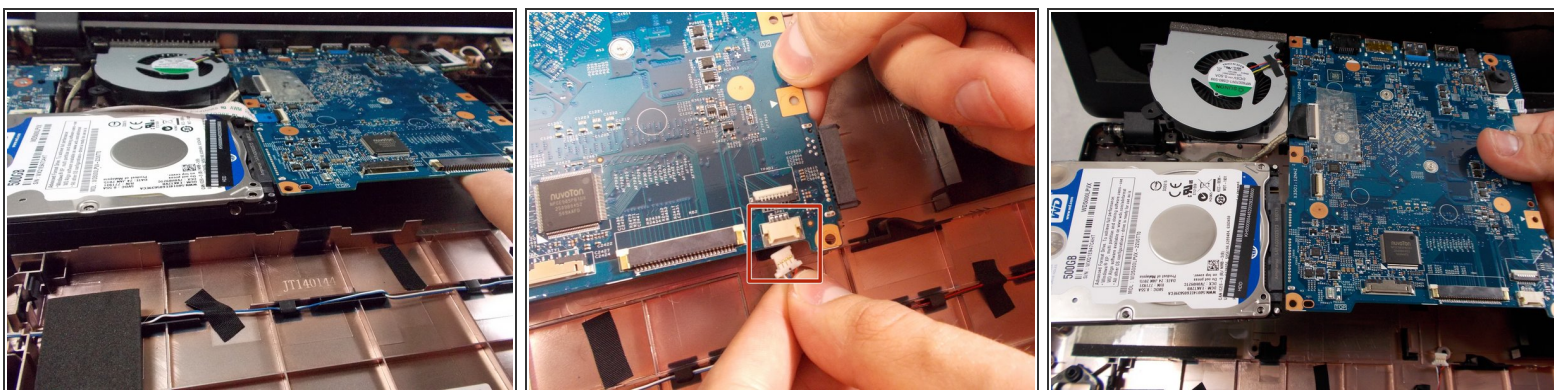
- Using a #000 Phillips screwdriver, remove all nine 1.2mm screws that are on the motherboard, wireless LAN card, and fan.

Step 8



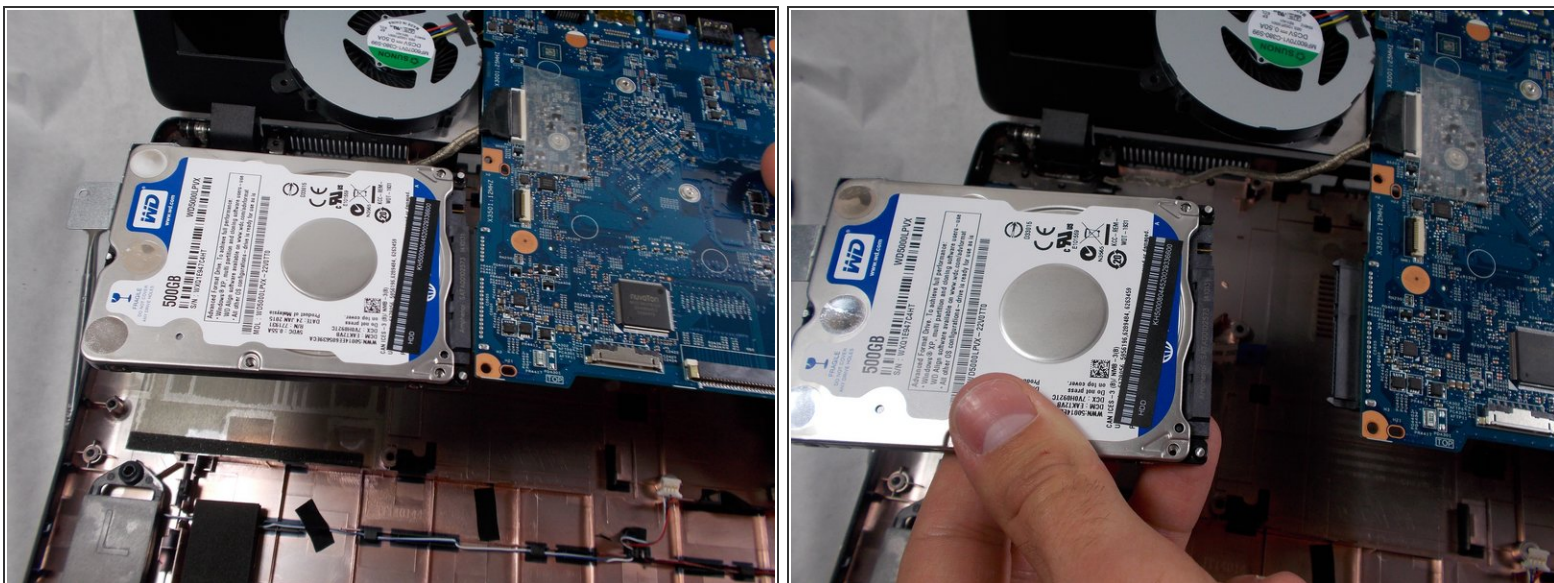
- Using a Phillips #000 screwdriver, remove the five 1.2mm screws that hold the hard drive in place.

Step 9



- Lift the hard drive, fan, motherboard, and wireless LAN card out of the device.
- These components are still connected with wires. Remove all plugs that may be attached to other components in order to isolate the group of components.

Step 10



- Once the four components are out of the device, the hard drive is ready to be removed.
- To remove the hard drive, unplug it from the motherboard.

To reassemble your device, follow these instructions in reverse order.