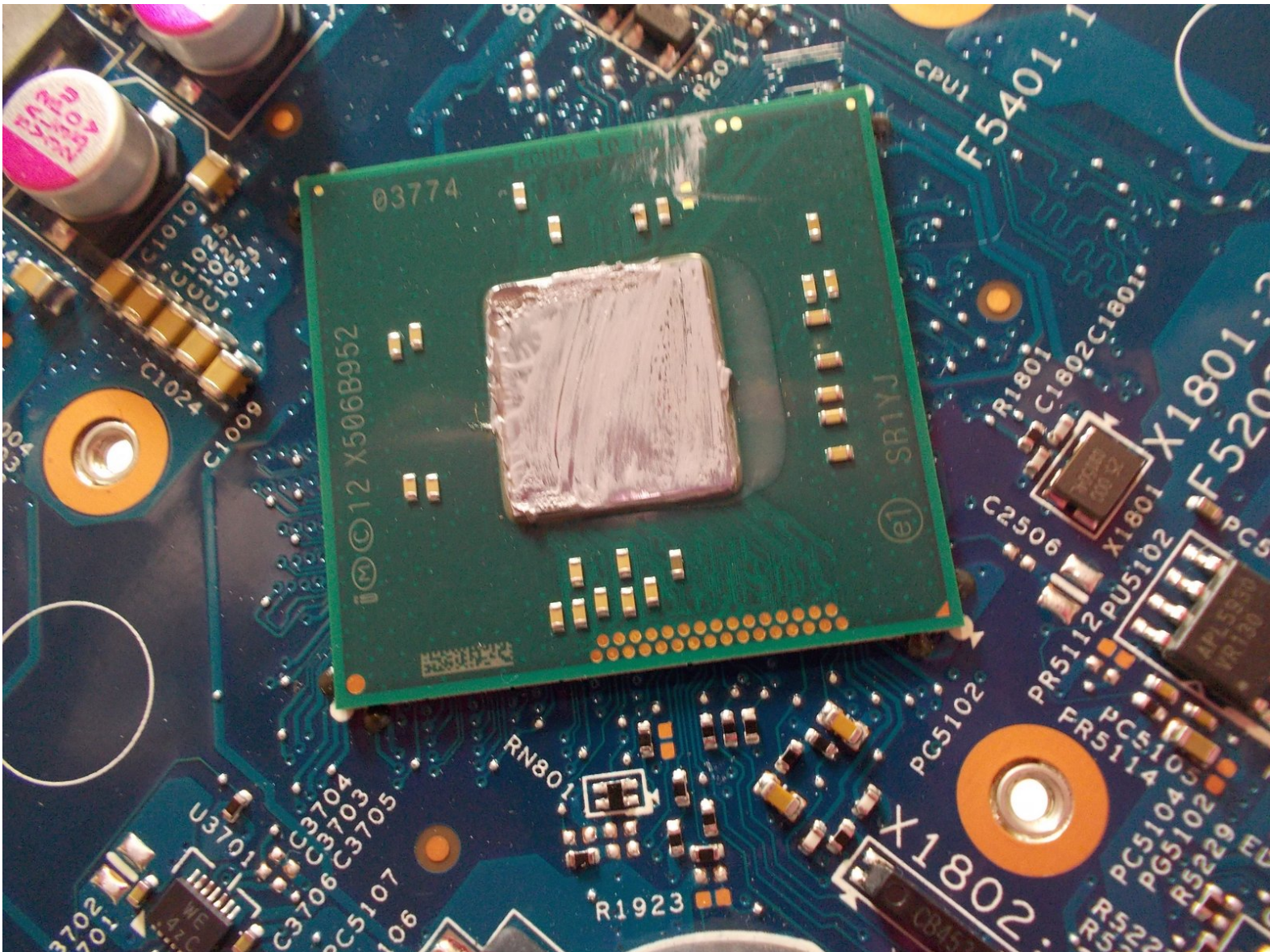




Acer Aspire ES1-512-C80E Motherboard Replacement

How to replace the motherboard in an Acer Aspire ES1-512-C80E.

Written By: Robert Creighton



This document was generated on 2020-04-11 09:35:52 PM (MST).

INTRODUCTION

You may need to replace the motherboard on your device if you experience problems regarding the Acer Aspire ES1-512-C80E's run speed. To do this, you will need Phillip's #00/#000 screwdrivers, and a spudger. Additionally, you will need a replacement motherboard. To access the motherboard, the back cover of the device will need to be removed. The process of replacing the motherboard should take between 15-25 minutes.



TOOLS:

- [Metal Spudger](#) (1)
- [Phillips #00 Screwdriver](#) (1)
- [Phillips #000 Screwdriver](#) (1)
- [iFixit Opening Tools](#) (1)



PARTS:

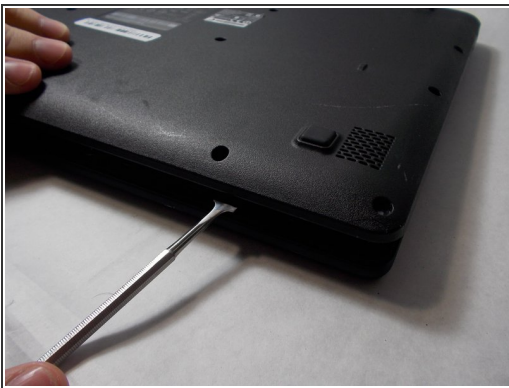
- [Acer Aspire Motherboard](#) (1)

Step 1 — Back Cover



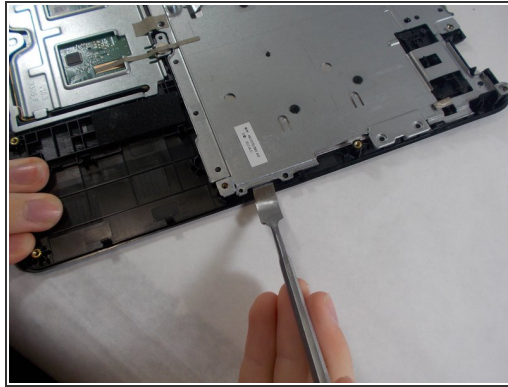
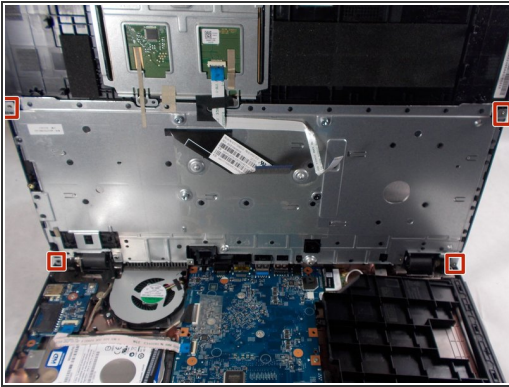
- Place the device upside down on a flat surface.
- Using a Phillips #00 screwdriver, remove all nineteen 1.2mm screws that secure the bottom cover of the device.





Step 2



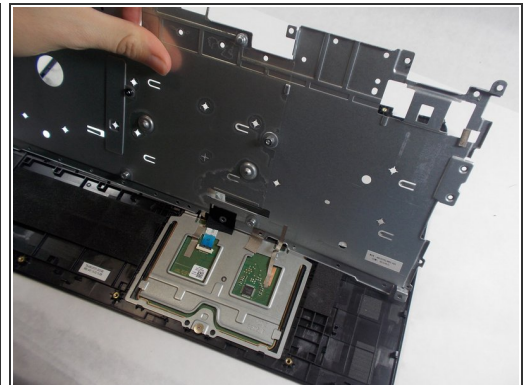
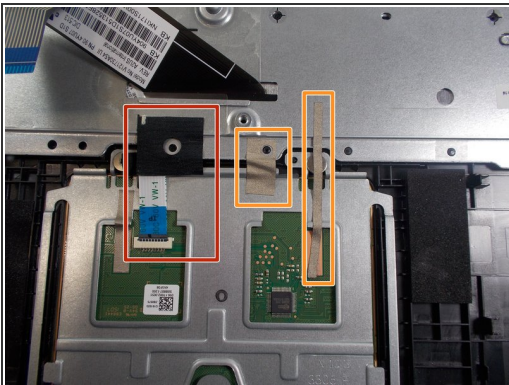
- Pry around the edges with a spudger to remove the back cover.
- i** The two hinges on the back require additional force to be popped open.





Step 3 — Keyboard



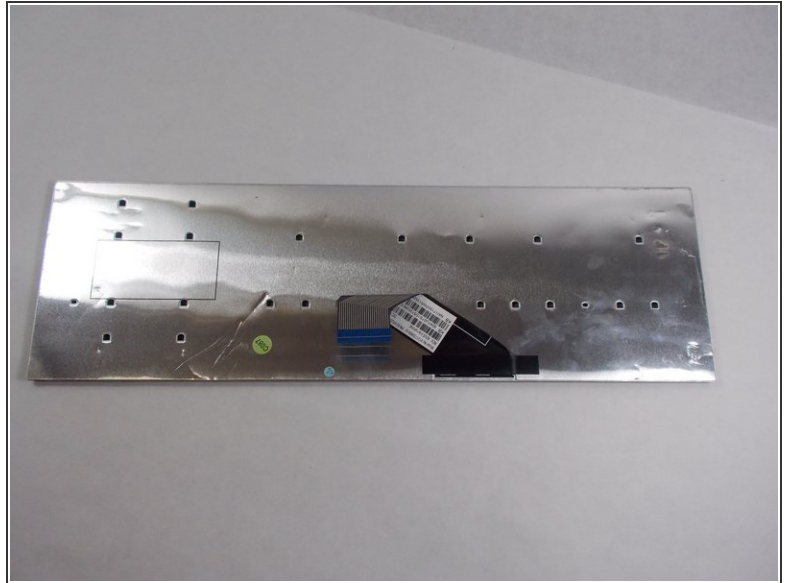
-  The keyboard is the silver piece located by itself on the upper half of the laptop.
-  Using a Phillips #00 screwdriver, remove the four 1.2mm screws from the keyboard.
-  Using a spudger, go around the edges and pry off the keyboard.
-  All black clips will have to be removed before the keyboard can be removed.

Step 4



-  Remove the ribbon cable connection from the keyboard.
-  Peel back the two pieces of tape to separate the keyboard.
-  Remove the keyboard from under the plastic covering.
-  Remove the silver plate back cover of the keyboard from the bottom base.

Step 5



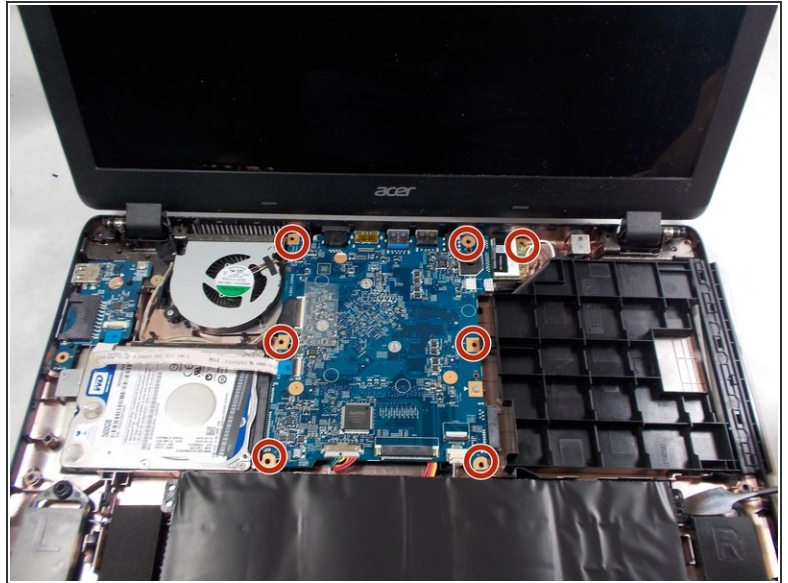
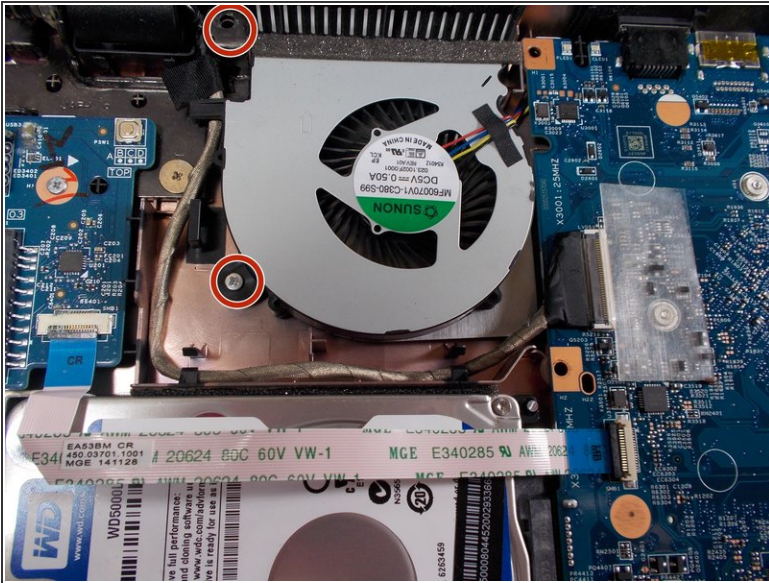
- Remove the large silver plate from the keyboard.
- ❗ You can not remove the silver backing with the attached wire from the back of the keyboard.

Step 6



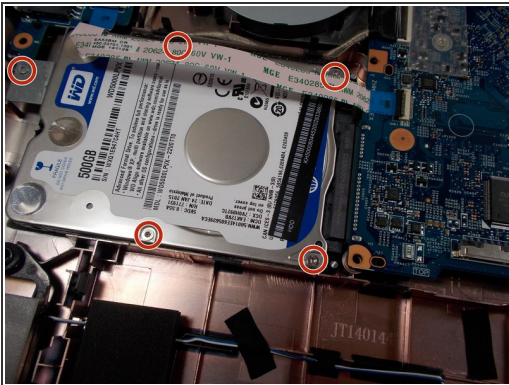
- The keyboard is removed and ready to be replaced.

Step 7 — Hard Drive



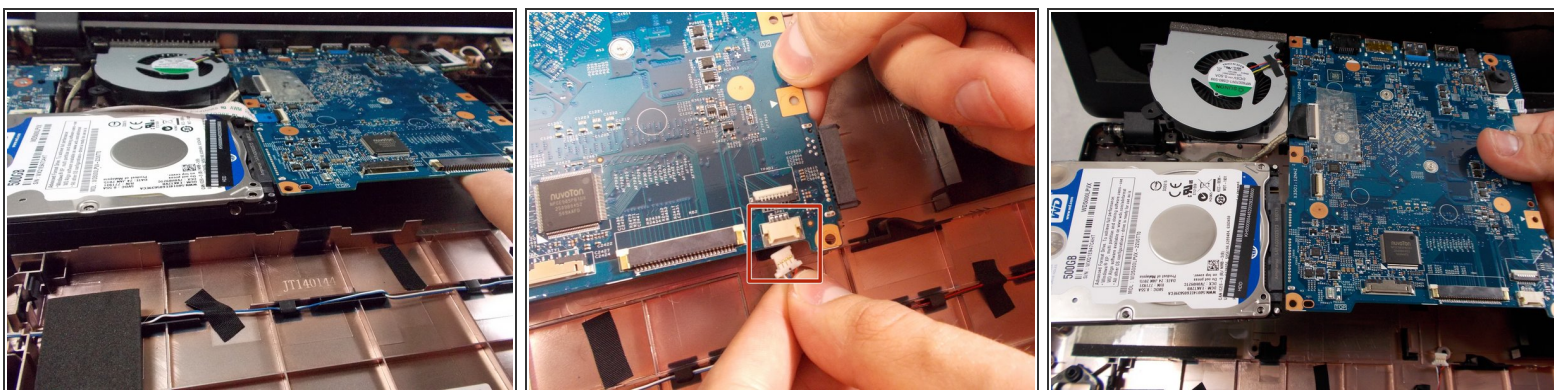
- Using a #000 Phillips screwdriver, remove all nine 1.2mm screws that are on the motherboard, wireless LAN card, and fan.

Step 8



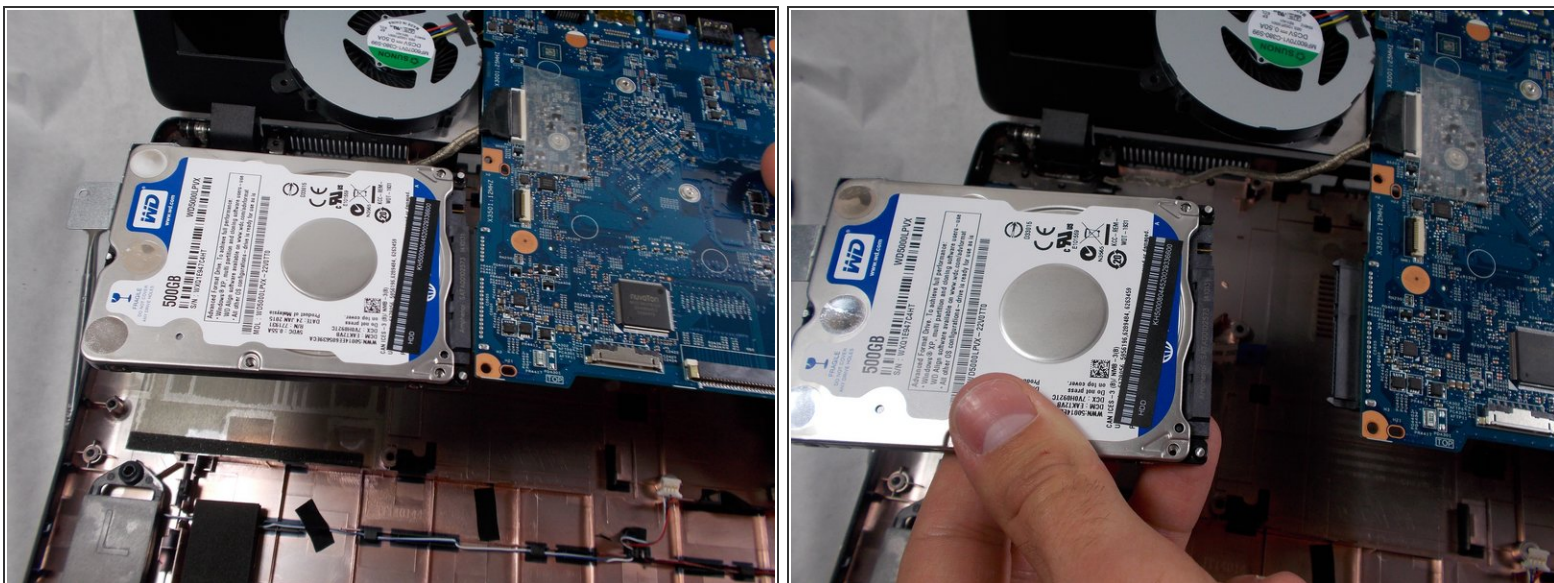
- Using a Phillips #000 screwdriver, remove the five 1.2mm screws that hold the hard drive in place.

Step 9



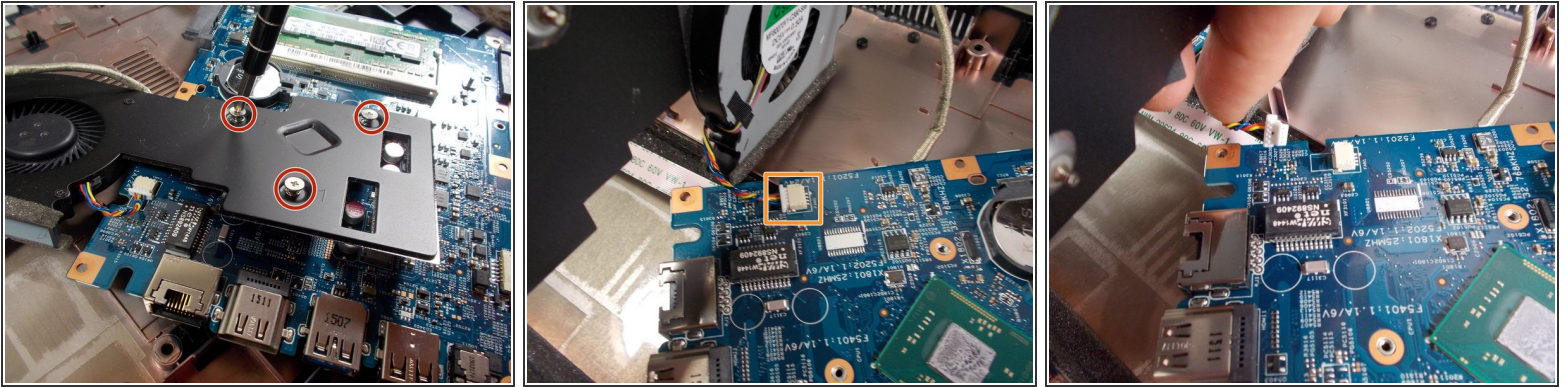
- Lift the hard drive, fan, motherboard, and wireless LAN card out of the device.
- These components are still connected with wires. Remove all plugs that may be attached to other components in order to isolate the group of components.

Step 10



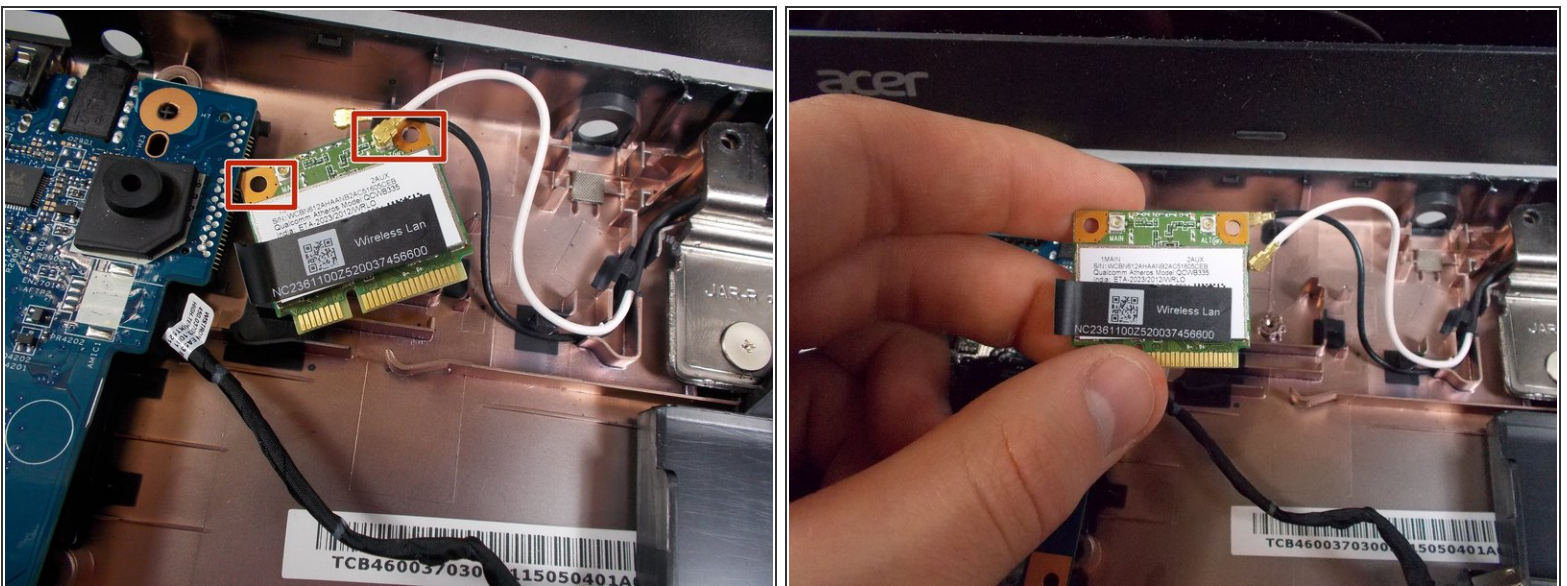
- Once the four components are out of the device, the hard drive is ready to be removed.
- To remove the hard drive, unplug it from the motherboard.

Step 11 — Motherboard



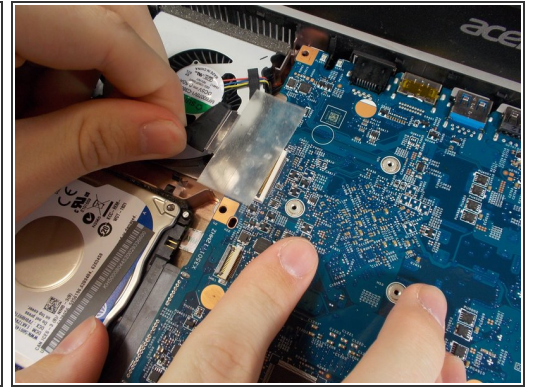
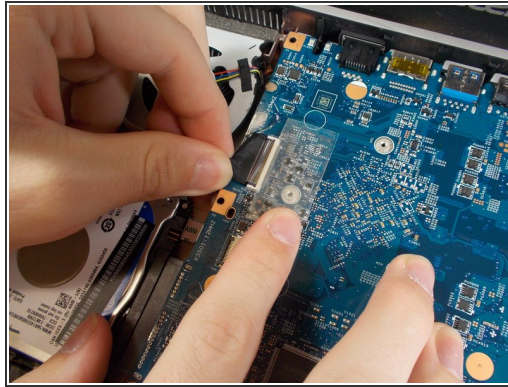
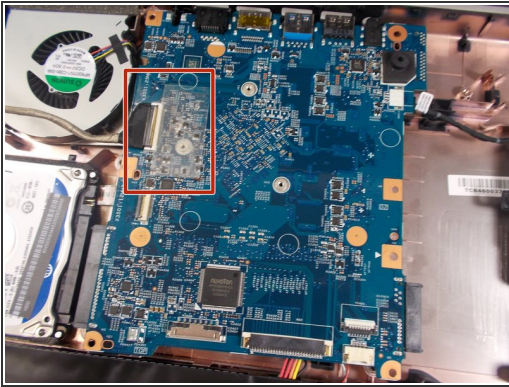
- Flip over the motherboard.
- Remove all three 1.2mm screws that attach the fan to the motherboard using a Phillips #00 screwdriver.
- Lift the fan off of the motherboard.
- The fan and the motherboard are still connected with wires. Remove any plugs that may be attaching the components.

Step 12



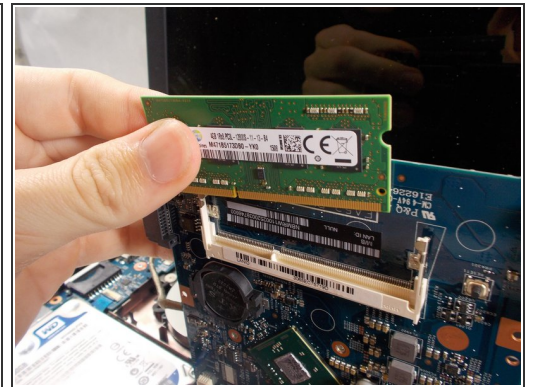
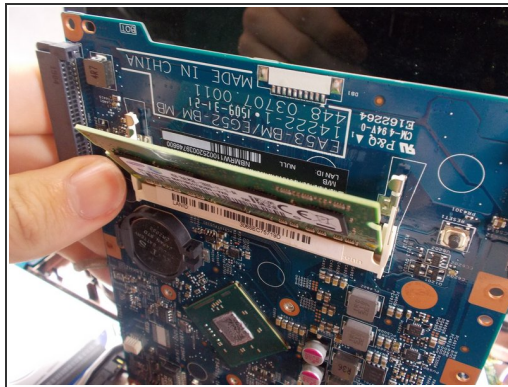
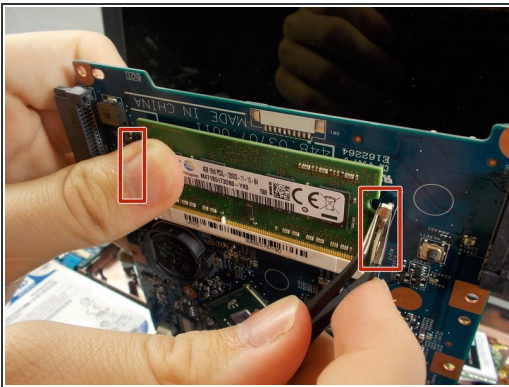
- Remove the wireless LAN card from the motherboard by unplugging the connecting wires.

Step 13



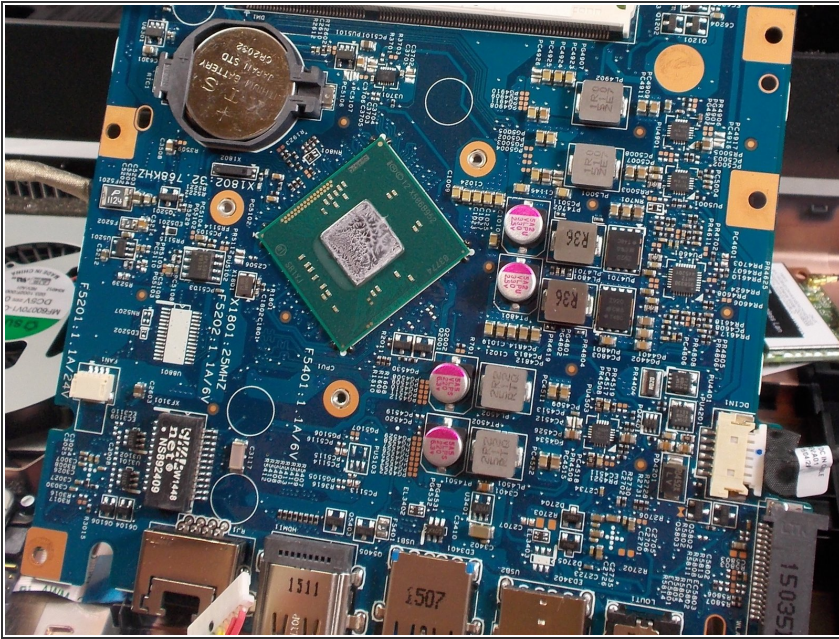
- Gently remove the tape and plug from the motherboard.

Step 14



- To remove the RAM, push both of the clips outward and the RAM chip will easily slide up and out.

Step 15



- Remove the motherboard from the laptop.

To reassemble your device, follow these instructions in reverse order.