



# Acer Aspire ES1-512-C80E RAM Replacement

This guide will show you how to remove and replace the RAM in the Acer Aspire ES1-512-C80E laptop.

Written By: Robert Creighton



## INTRODUCTION

You may need to replace the RAM on your Acer Aspire ES1-512-C80E if you experience problems regarding the device's power. To do this, you will need Phillip's #00/#000 screwdrivers, and a spudger. Additionally, you will need a replacement RAM. To access the RAM, the back cover of the device will need to be removed. The process of replacing the RAM should take between 10-20 minutes.



### TOOLS:

- [Metal Spudger](#) (1)
- [Phillips #00 Screwdriver](#) (1)
- [Phillips #000 Screwdriver](#) (1)
- [iFixit Opening Tools](#) (1)



### PARTS:

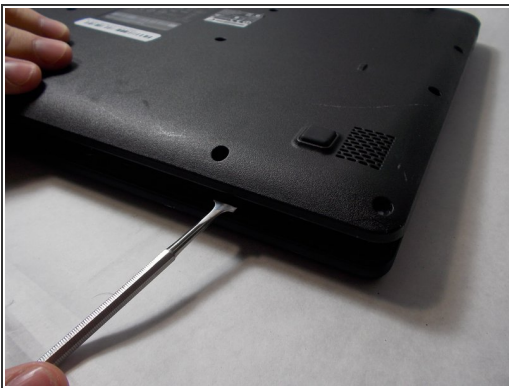
- [PC3-8500 4 GB RAM Chip](#) (1)

## Step 1 — Back Cover



- Place the device upside down on a flat surface.
- Using a Phillips #00 screwdriver, remove all nineteen 1.2mm screws that secure the bottom cover of the device.

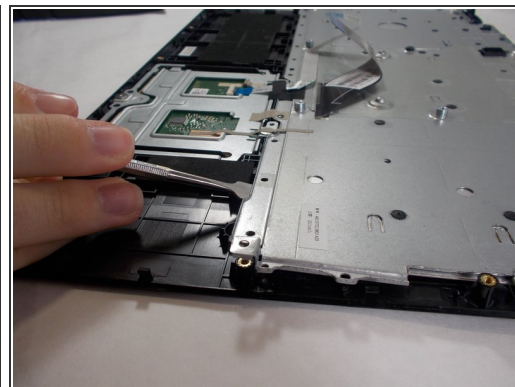
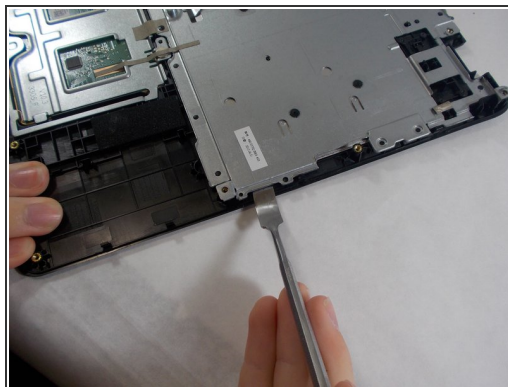
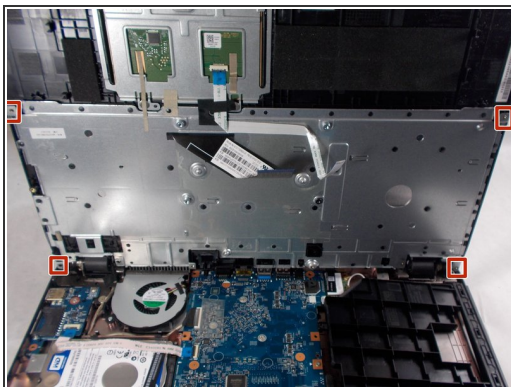
## Step 2







- Pry around the edges with a spudger to remove the back cover.
- i** The two hinges on the back require additional force to be popped open.

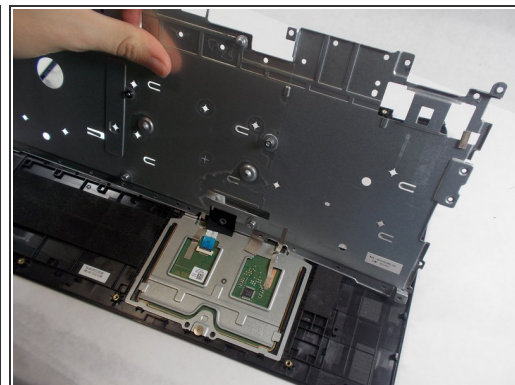
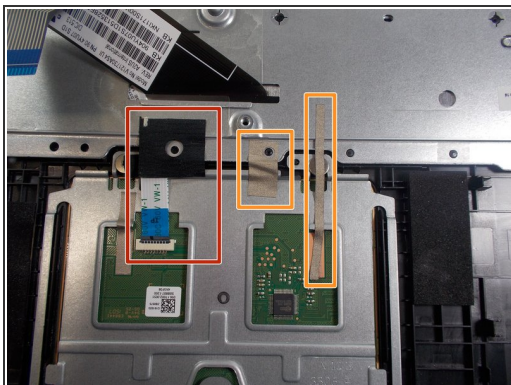






## Step 3 — Keyboard



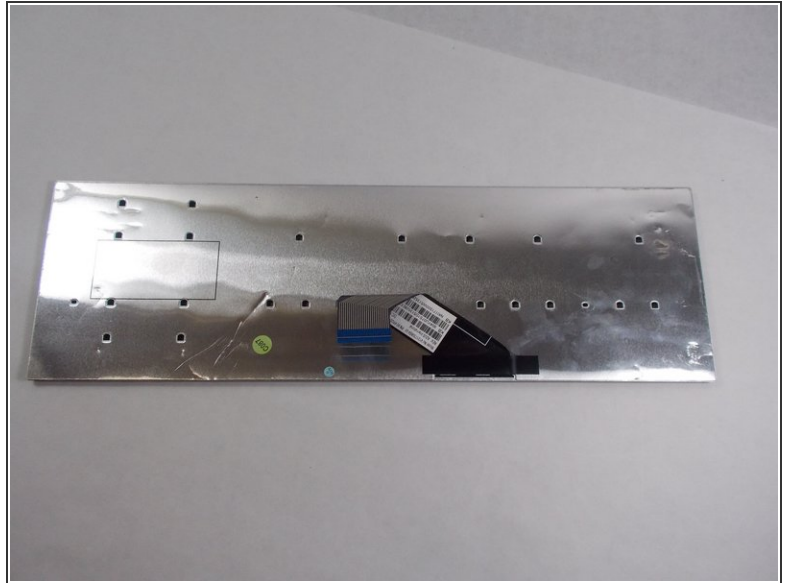
-  The keyboard is the silver piece located by itself on the upper half of the laptop.
-  Using a Phillips #00 screwdriver, remove the four 1.2mm screws from the keyboard.
-  Using a spudger, go around the edges and pry off the keyboard.
-  All black clips will have to be removed before the keyboard can be removed.

## Step 4



-  Remove the ribbon cable connection from the keyboard.
-  Peel back the two pieces of tape to separate the keyboard.
-  Remove the keyboard from under the plastic covering.
-  Remove the silver plate back cover of the keyboard from the bottom base.

## Step 5



- Remove the large silver plate from the keyboard.
- ❗ You can not remove the silver backing with the attached wire from the back of the keyboard.

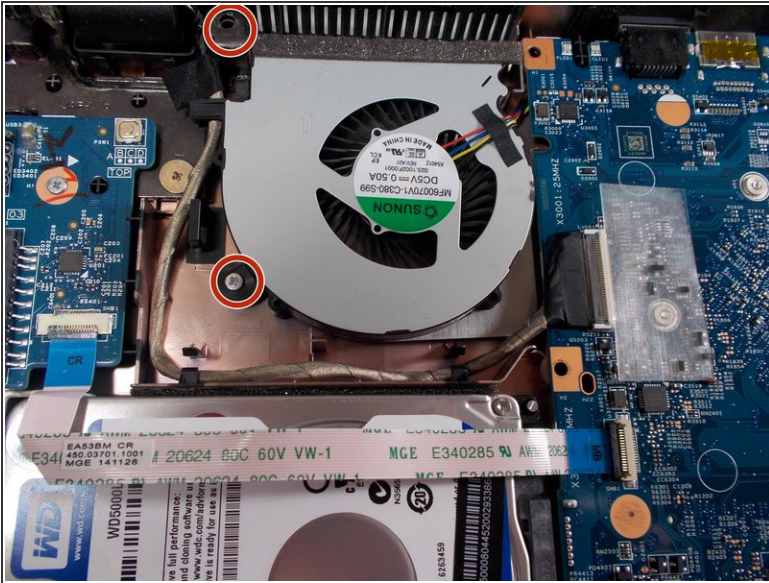
## Step 6



- The keyboard is removed and ready to be replaced.

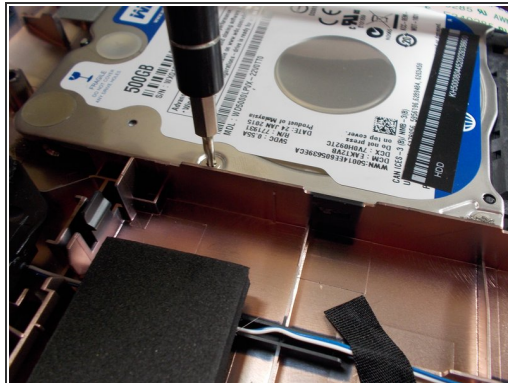
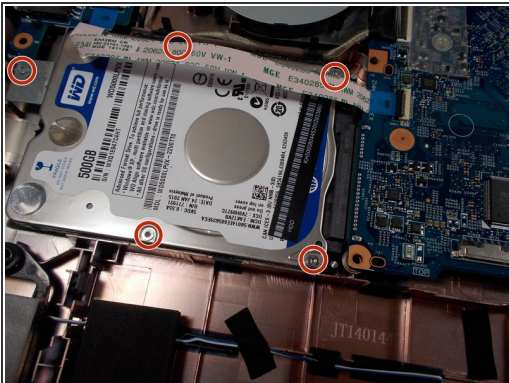


## Step 7 — Hard Drive



- Using a #000 Phillips screwdriver, remove all nine 1.2mm screws that are on the motherboard, wireless LAN card, and fan.

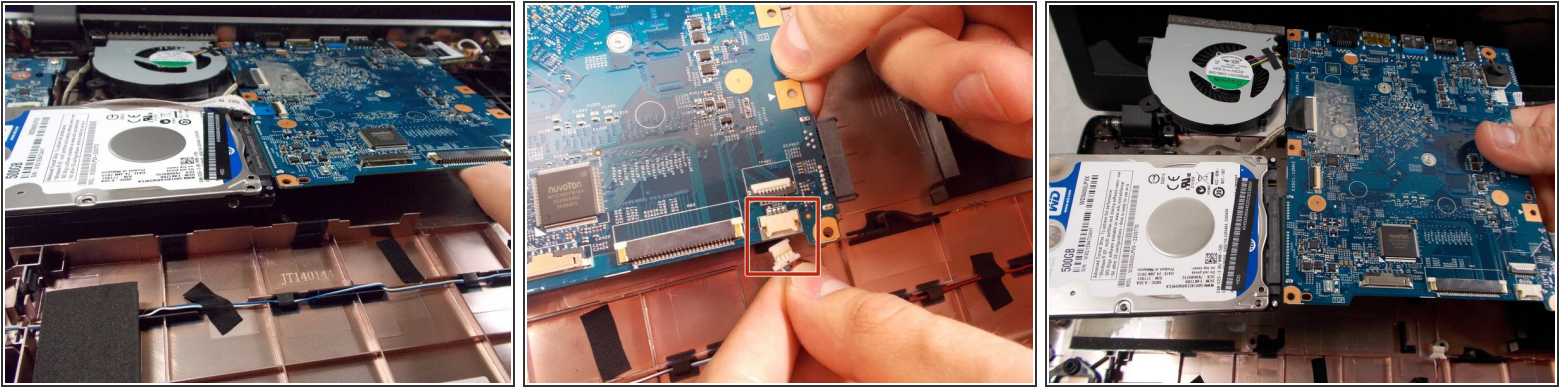
## Step 8



- Using a Phillips #000 screwdriver, remove the five 1.2mm screws that hold the hard drive in place.

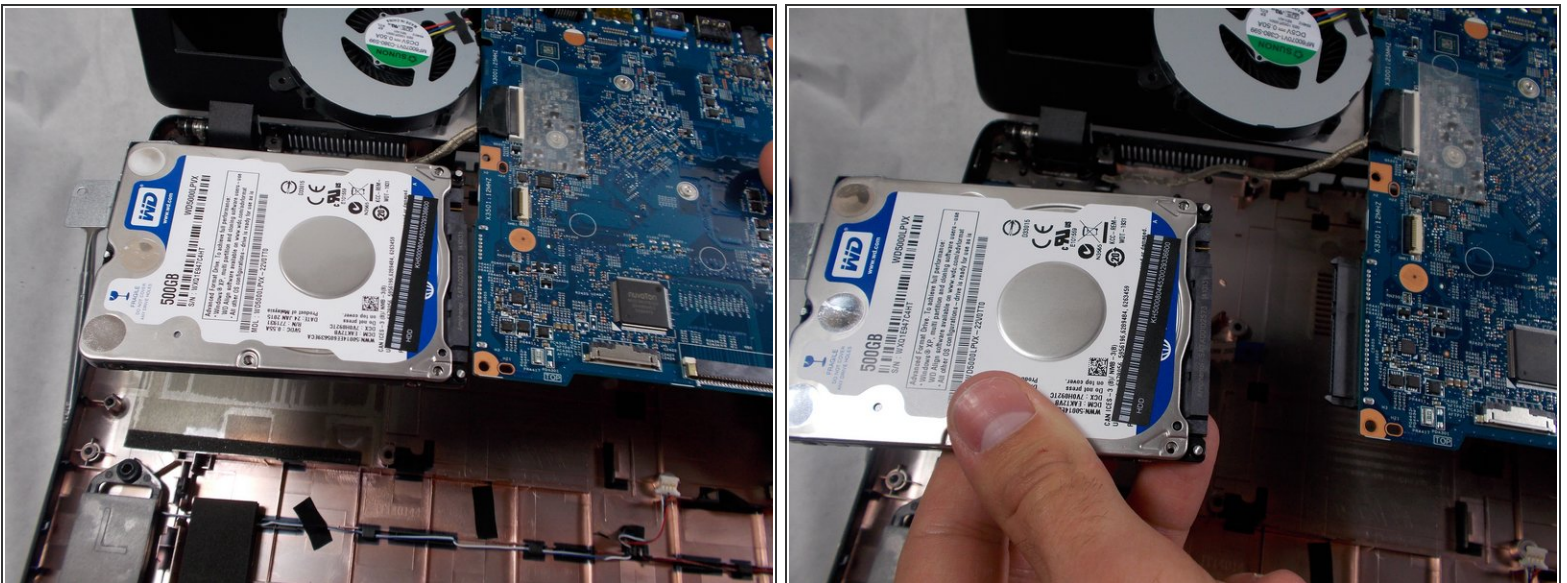


## Step 9



- Lift the hard drive, fan, motherboard, and wireless LAN card out of the device.
- These components are still connected with wires. Remove all plugs that may be attached to other components in order to isolate the group of components.

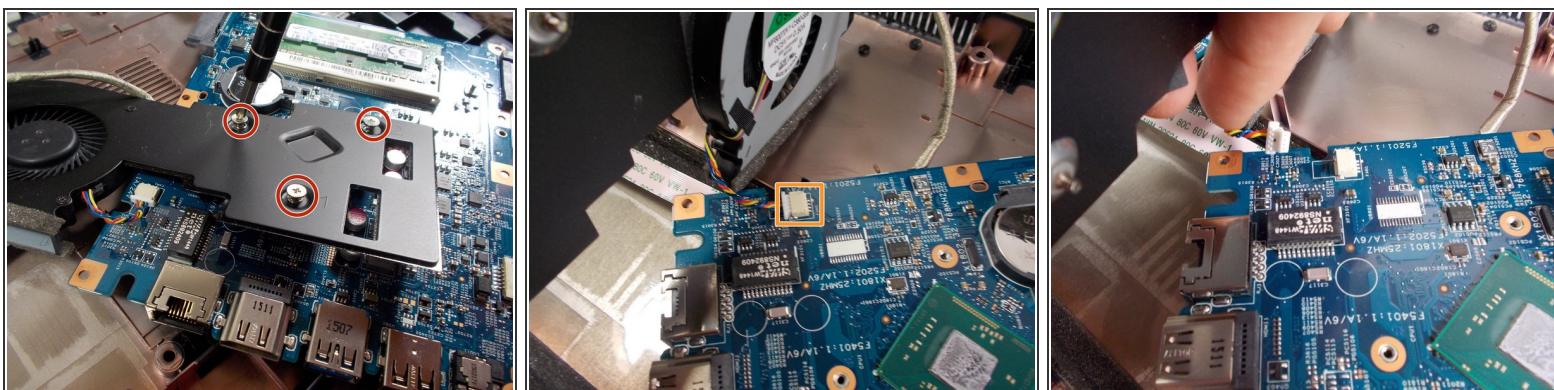
## Step 10



- Once the four components are out of the device, the hard drive is ready to be removed.
- To remove the hard drive, unplug it from the motherboard.

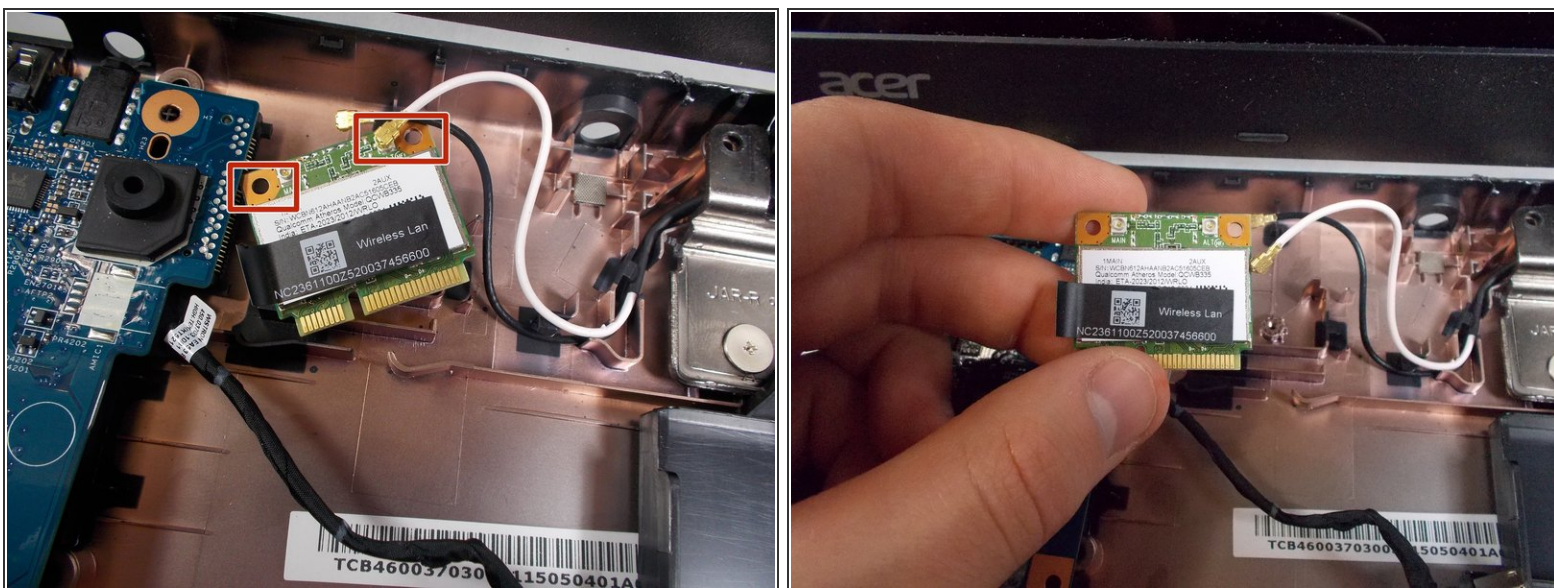


## Step 11 — RAM



- Flip over the motherboard.
- Remove all three 1.2mm screws that attach the fan to the motherboard using a Phillips #00 screwdriver.
- Lift the fan off of the motherboard.
- The fan and the motherboard are still connected with wires. Remove any plugs that may be attaching the components.

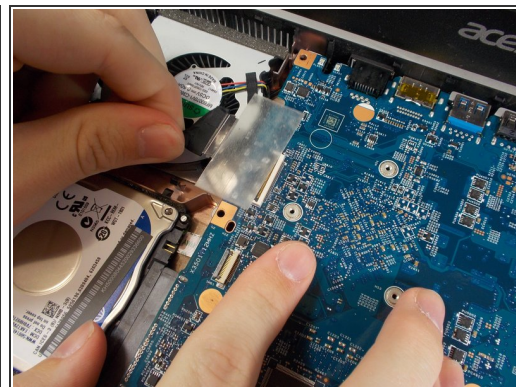
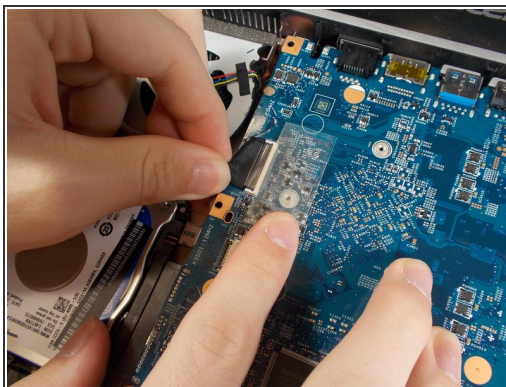
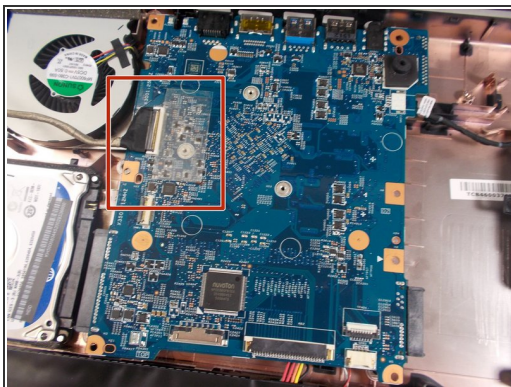
## Step 12



- Remove the wireless LAN card from the motherboard by unplugging the connecting wires.

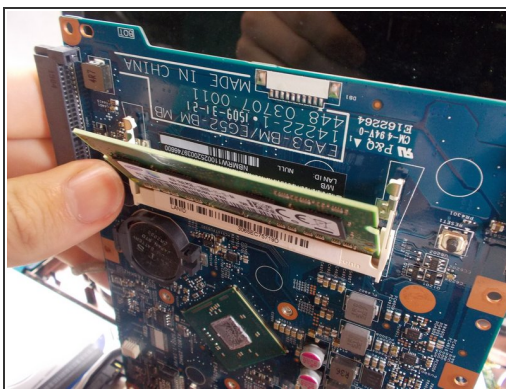
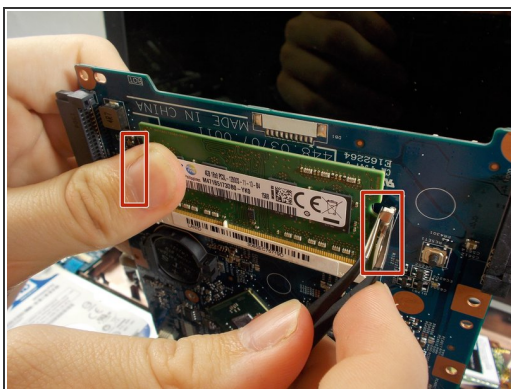


## Step 13



- Gently remove the tape and plug from the motherboard.

## Step 14



- In order to remove the RAM, push both of the clips outward and the RAM chip will easily slide up and out.

## Step 15



- The RAM is removed and ready to be replaced.

To reassemble your device, follow these instructions in reverse order.