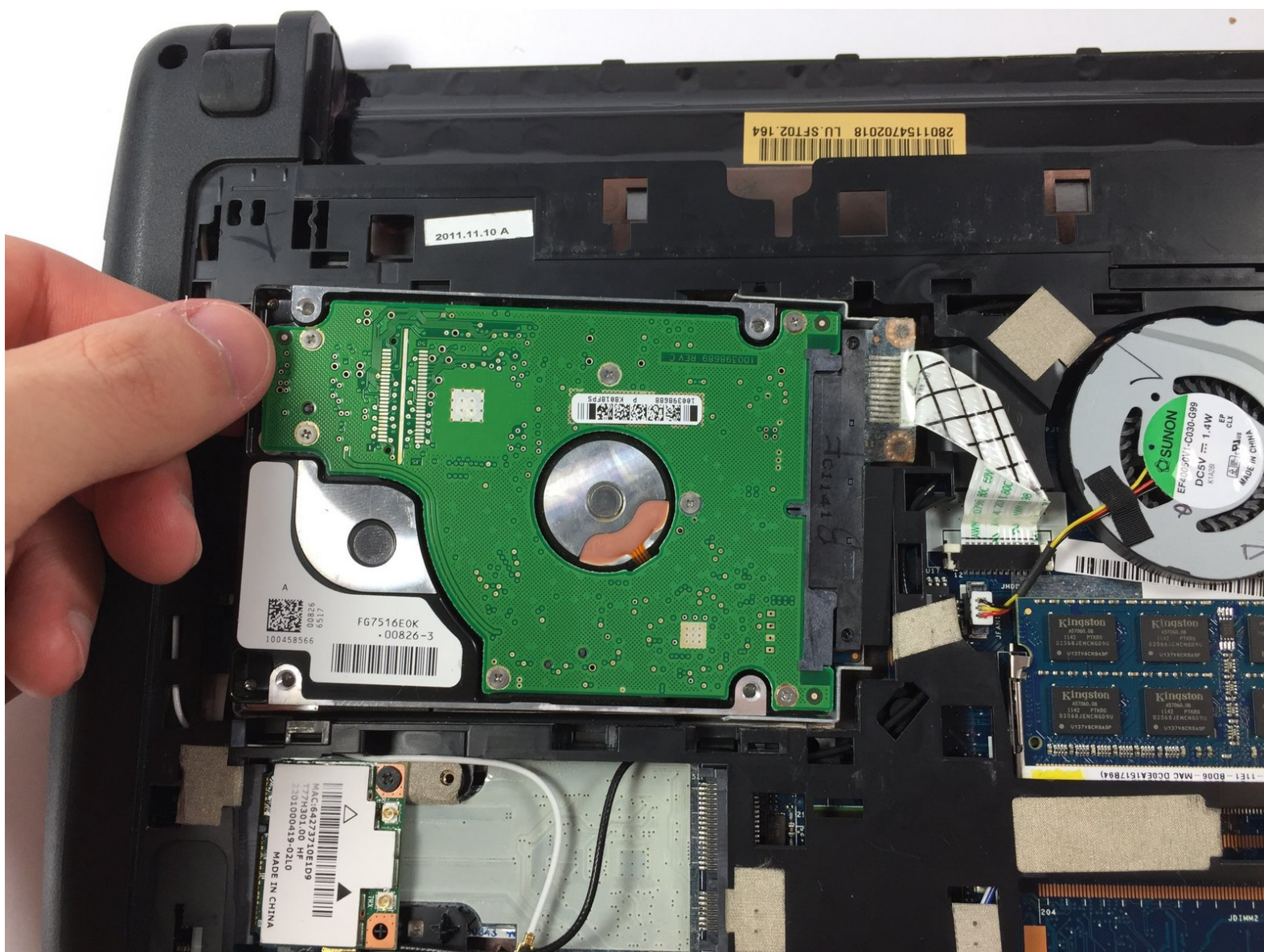




# Acer Aspire One 722 Hard Drive Replacement

A guide on how to replace the hard drive on the Acer Aspire One 722.

Written By: Christian Barboza





## TOOLS:

- [Essential Electronics Toolkit](#) (1)
-

## Step 1 — Battery



- Shut the netbook off (Power down netbook at top left corner).

## Step 2



- Close the netbook and flip it over so that the back is facing up.



### Step 3



- Slide the button below the battery to the right while simultaneously pulling the battery out.

### Step 4



- Remove the old battery and get the replacement battery.

## Step 5



- Check the thin grooves on the side of the battery entry and line the replacement battery up to that.

## Step 6 — Hard Drive



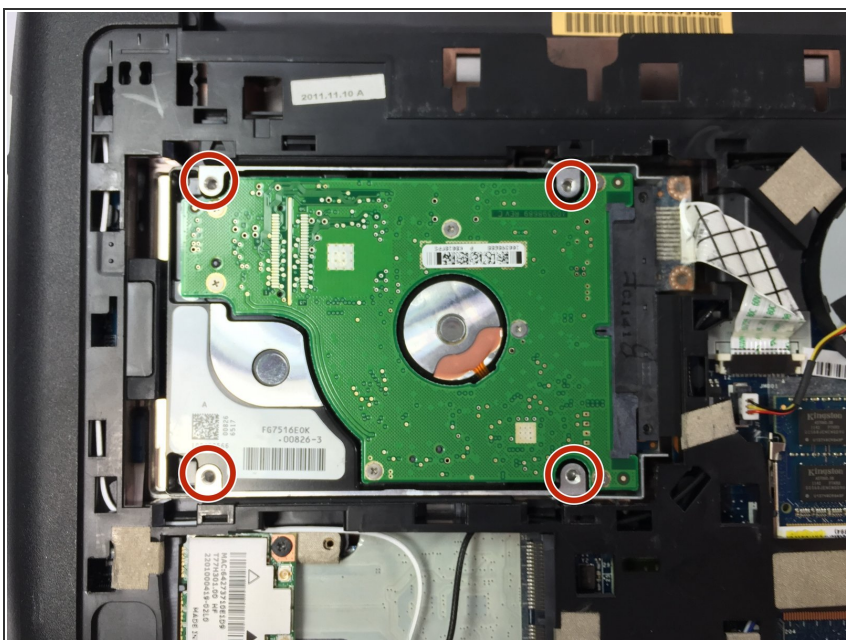
- Remove the screw on the bottom of the netbook.

## Step 7



- Remove the backing plate.

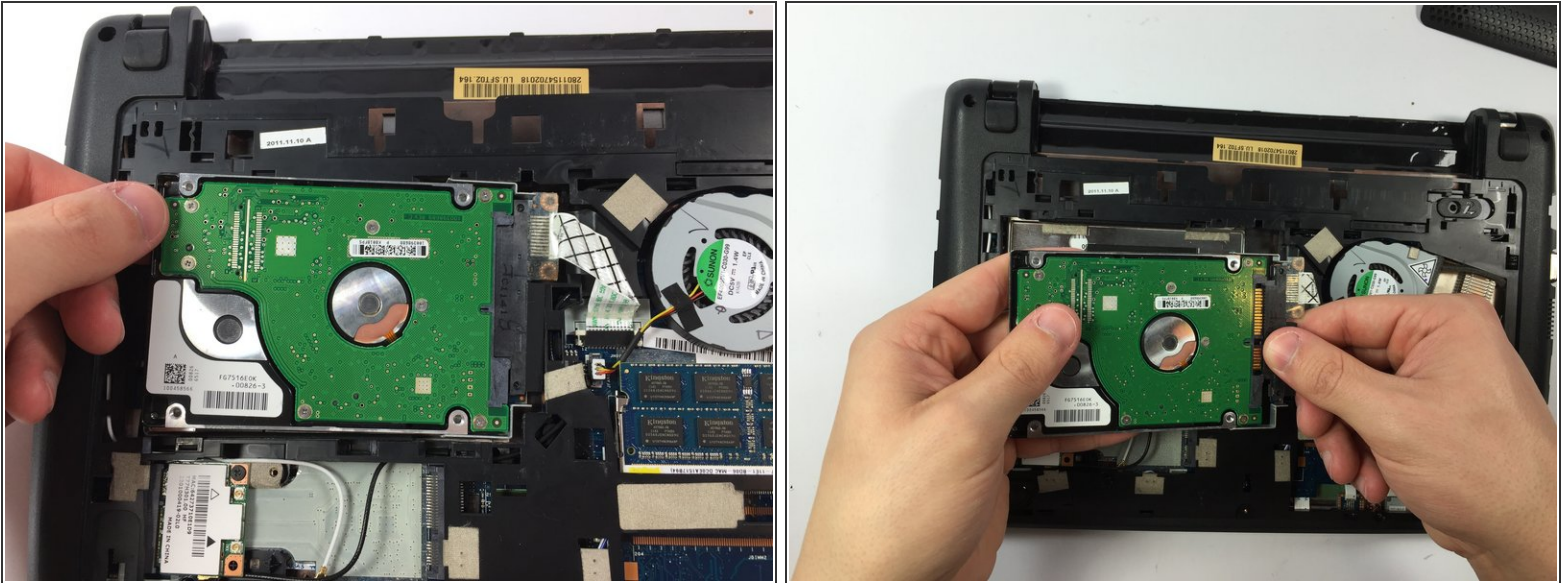
## Step 8



- Unscrew the four screws that are holding the hard drive in place.

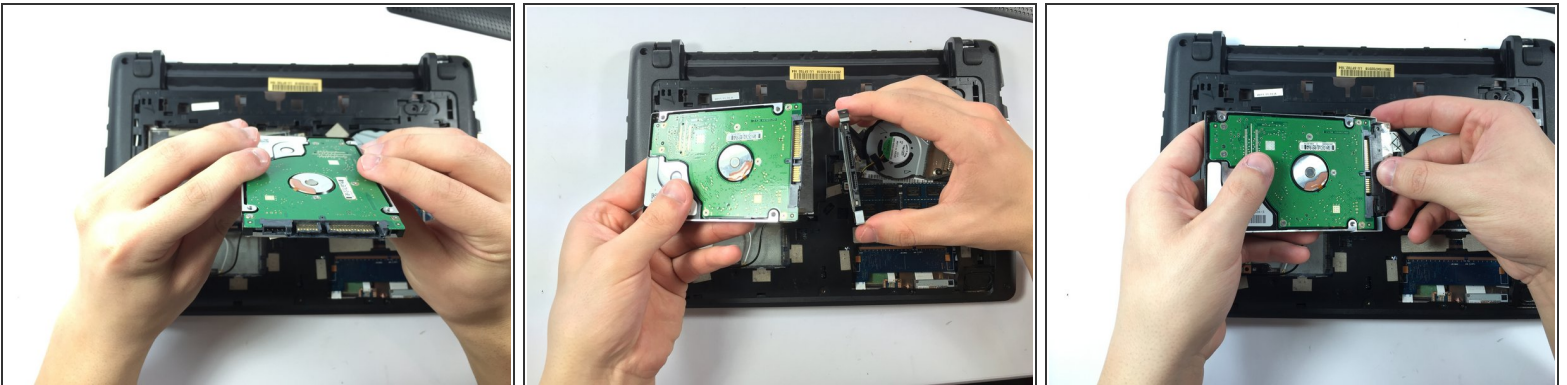


## Step 9



- Slowly lift the hard drive up and remove the sata cable that is connected to it.

## Step 10



- Take your replacement hard drive and connect the sata cable to the hard drive.

To reassemble your device, follow these instructions in reverse order.