



# Acer Aspire One 725-0845 Back Plate Replacement

Pre-requisite for Hard Drive, RAM, Speakers, Keyboard, and Touchpad replacement guides for the Acer Aspire One 725-0845.

Written By: Joe Kendall



## INTRODUCTION

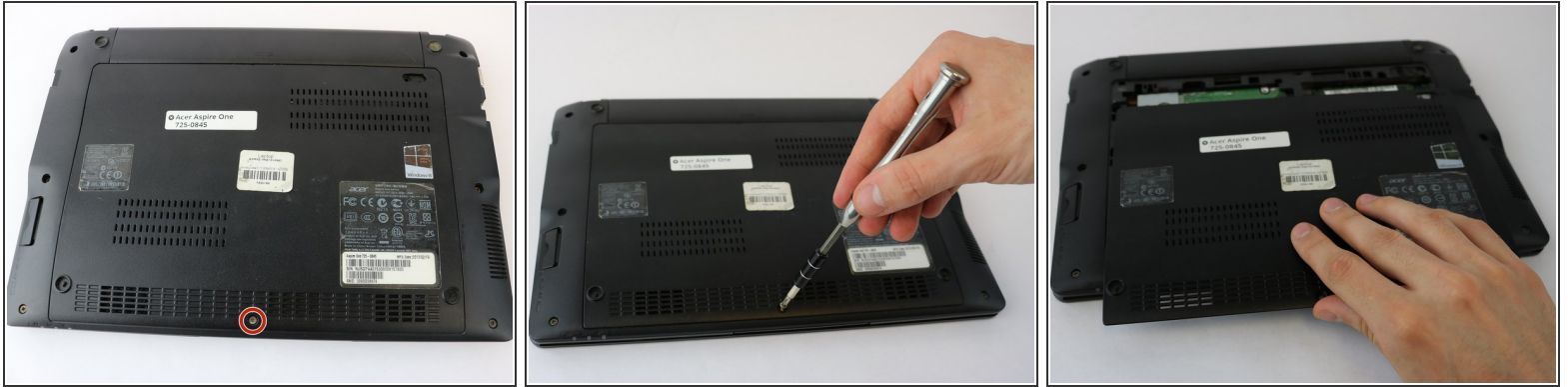
In order to access the primary components of the Acer Aspire One 725-0845, you will need to remove the back-plate, detailed here.



### TOOLS:

- [JIS Driver Set](#) (1)
  - [Spudger](#) (1)
-

## Step 1 — Back Plate



- Using the JIS J1 Screwdriver Bit and Driver, remove the center screw (7.0 mm) from the back-plate.
- Using your hands, slide the back-plate away from the center of the device and remove.

To reassemble your device, follow these instructions in reverse order.