



Acer Aspire One 725-0845 Hard Drive Replacement

A step-by-step guide to replacing the hard drive in the Acer Aspire One 725-0845.

Written By: Jose Souto



INTRODUCTION

The hard drive is the location where all the information on the device is stored. A damaged or corrupted hard drive will cause the device to fail to boot past POST. If you have followed the steps in the [Troubleshooting Guide](#) and found that you need to replace a damaged or corrupted hard drive, this step-by-step guide will lead you through the process of removing the battery, back-plate, and hard drive.



TOOLS:

- [Spudger](#) (1)
- [JIS Driver Set](#) (1)



PARTS:

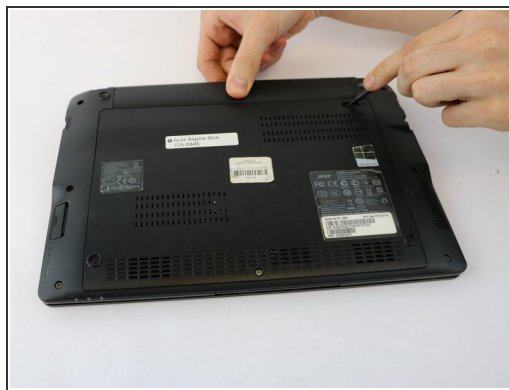
- [320 GB 5400 RPM 2.5" Hard Drive](#) (1)

Step 1 — Battery



- Ensure the device is powered off by holding down the power button on the top left-hand side.
- On a flat, level surface, flip the device over so that the back-plate is accessible.

Step 2



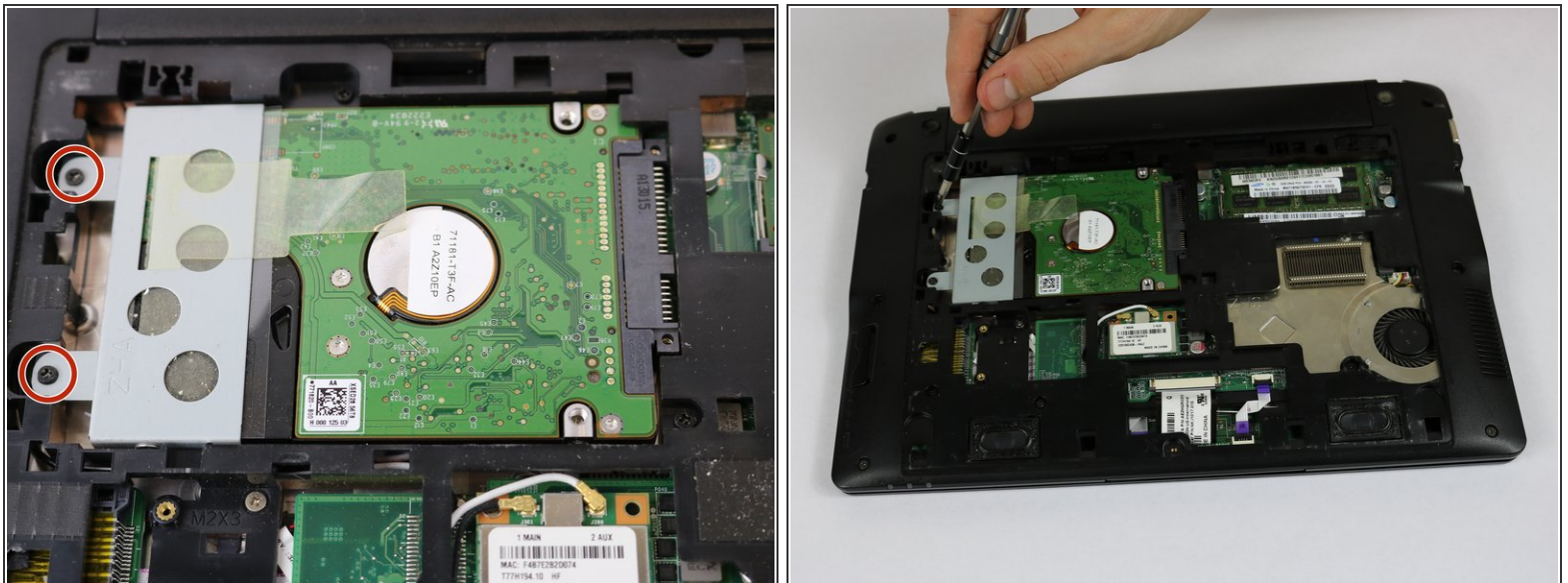
- Using a spudger or any fine-pointed tool, push the release slide away from the center of the device.
- Simultaneously pull the battery out and away from the device.

Step 3 — Back Plate



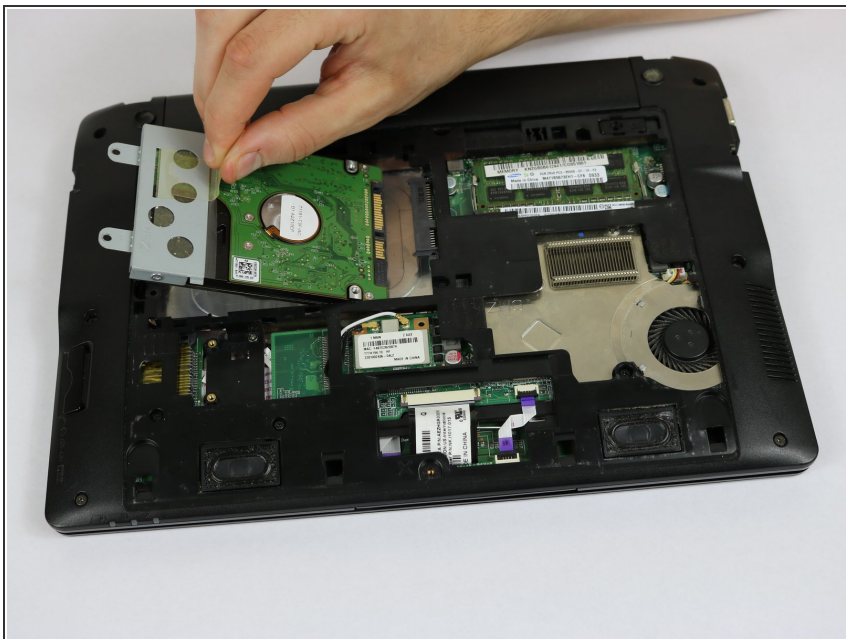
- Using the JIS J1 Screwdriver Bit and Driver, remove the center screw (7.0 mm) from the back-plate.
- Using your hands, slide the back-plate away from the center of the device and remove.

Step 4 — Hard Drive



- Using the JIS J1 Screwdriver Bit and Driver, remove the two screws (9.0 mm) from the outward side of the hard drive.

Step 5



- Using your hand, slide the hard drive away from the center of the device until it disconnects from the motherboard.
- Carefully lift the outward side of the hard drive and place the drive on a clean, non-magnetic surface.

To reassemble your device, follow these instructions in reverse order.