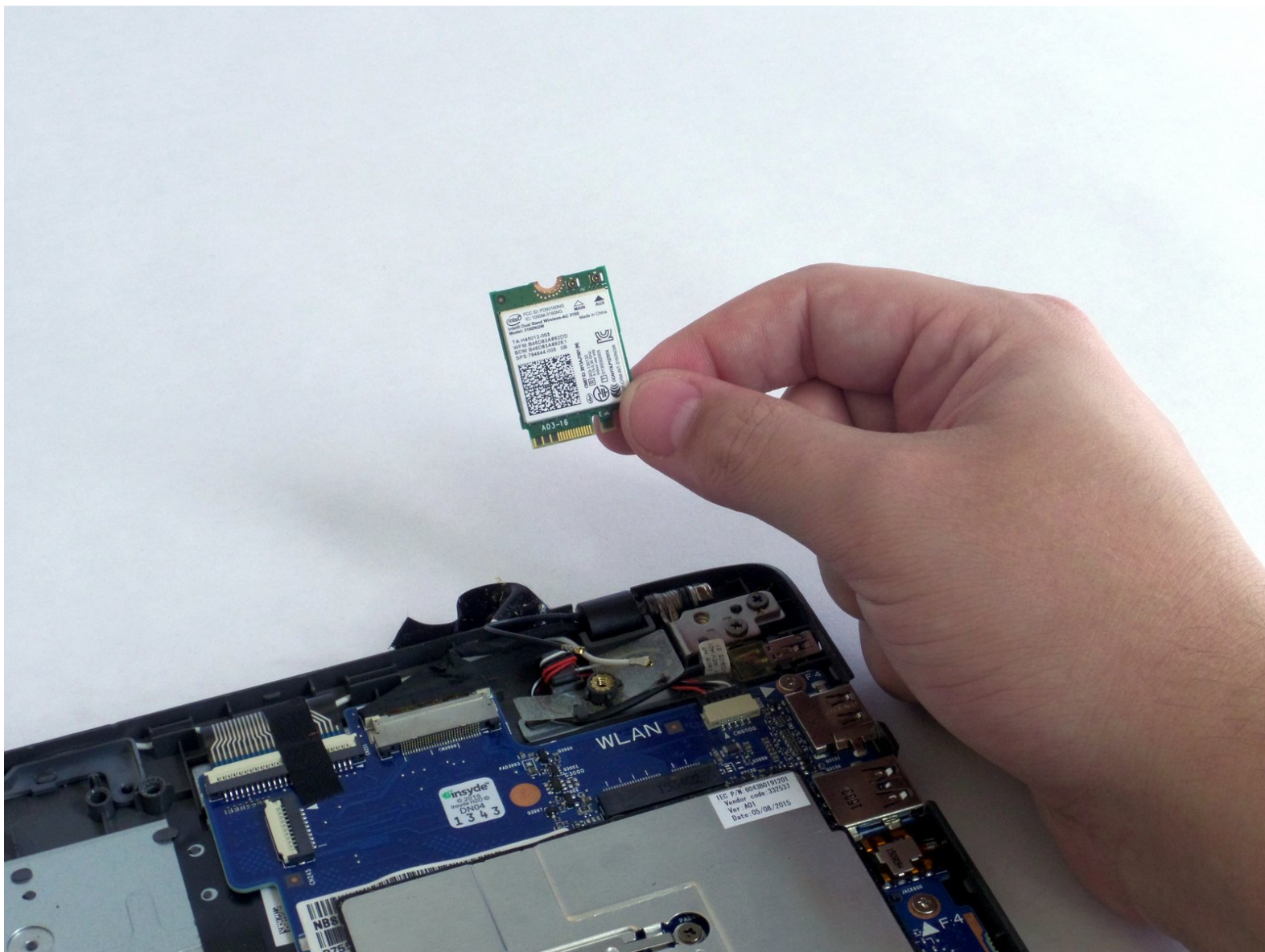




# Acer Aspire One Cloudbook 11 AO1-131-C7DW WiFi Module Replacement

The guide can help you replace the WIFI module.

Written By: Luz Villegas



## INTRODUCTION

A damaged WiFi module will not allow you to connect your laptop to the internet. Folow this guide and we will show you how to replace the WiFi module.

---

### TOOLS:

- [IFIXIT screwdriver with a PH0 bit](#) (1)
  - [nylon pry tool](#) (1)
  - [Tweezers](#) (1)
-

## Step 1 — Back Panel



- Power the laptop off.
- Flip the laptop over and position it so the opening faces you.
- Remove the rubber foot located near the opening side of the device using tweezers.

## Step 2



- Unscrew the five 5-mm screws using the PH0 screwdriver.

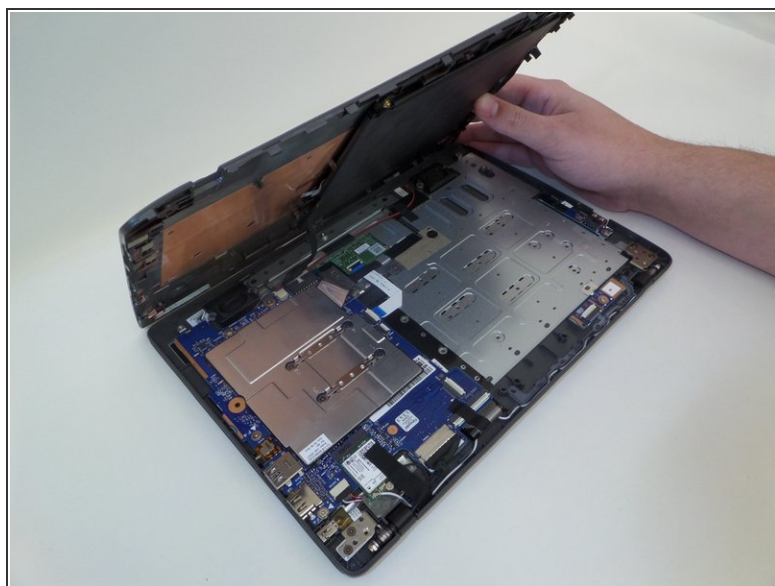
## Step 3



- Identify the HDMI port located in the side of the laptop opposite to the power button.
  - Insert the plastic opening tool into the divet of the back panel located above the HDMI port.
  - Pry along the laptop frame until the back panel comes loose.
- ⚠ Do not pull the back panel too hard as the battery is still connected to the back panel and the motherboard. This can damage your device.

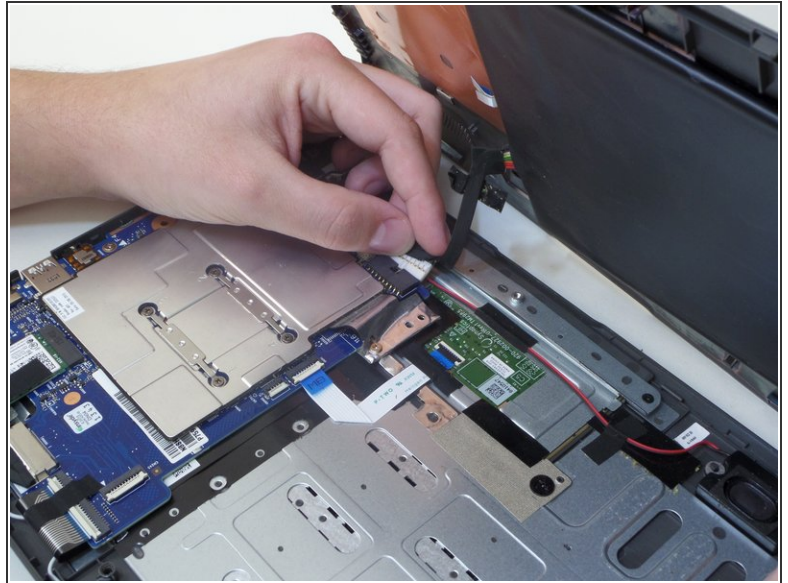
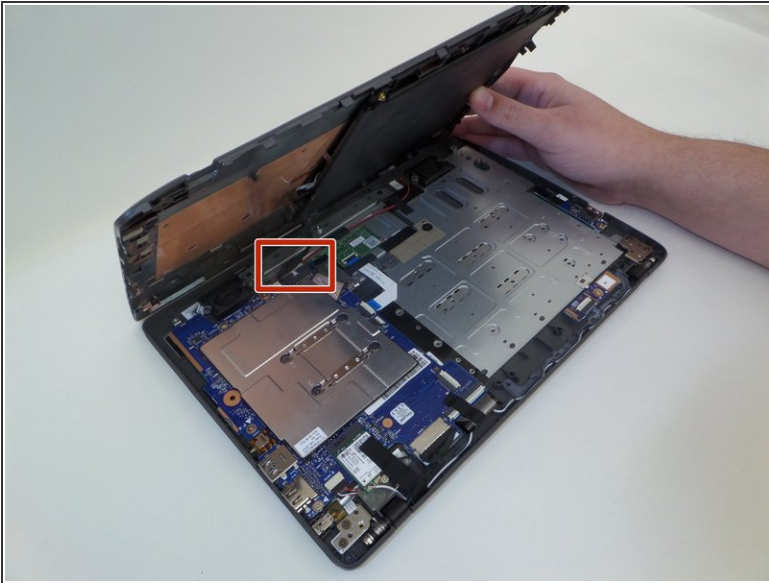


## Step 4



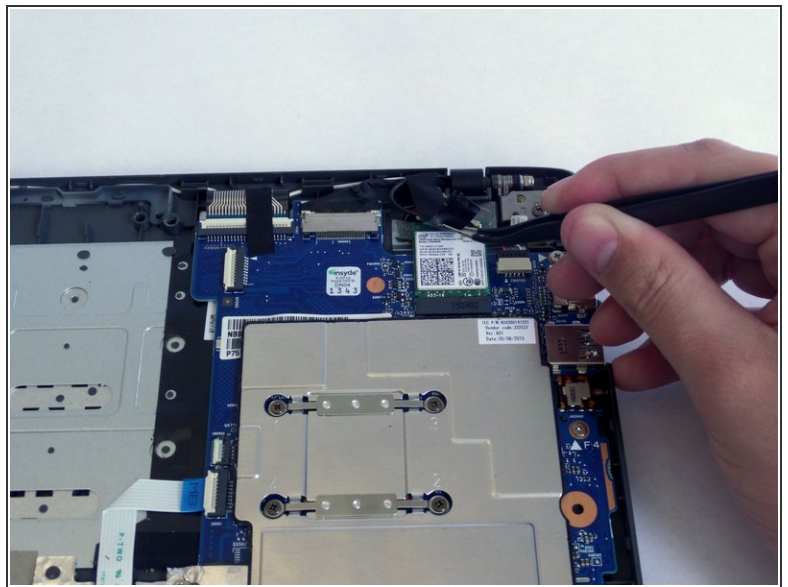
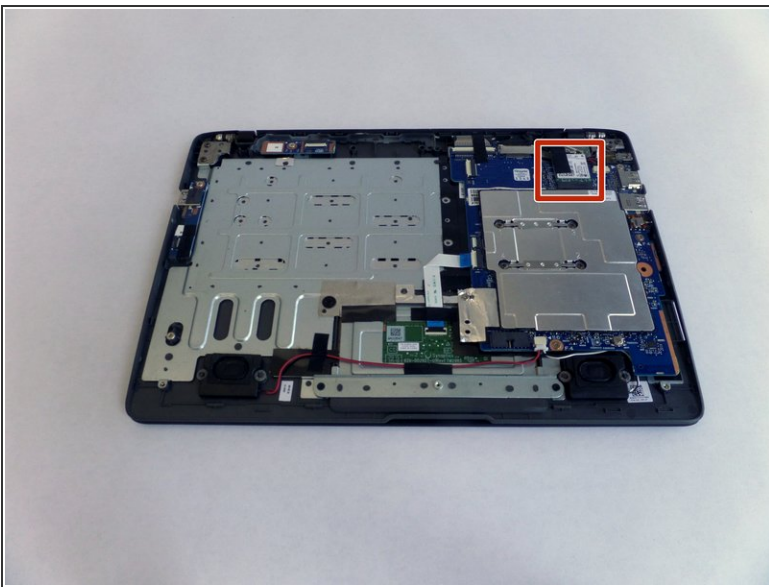
- Rotate the device so the opening faces you again.
- Hold the back panel away from the laptop and remove the 4-mm screw using the PH0 screwdriver.
  - ⓘ This screw is fastening the battery to the laptop.
- Lift the back panel gently.

## Step 5



- Unplug the cable that connects the battery to the motherboard.
- Detach the back panel, which still includes the battery.

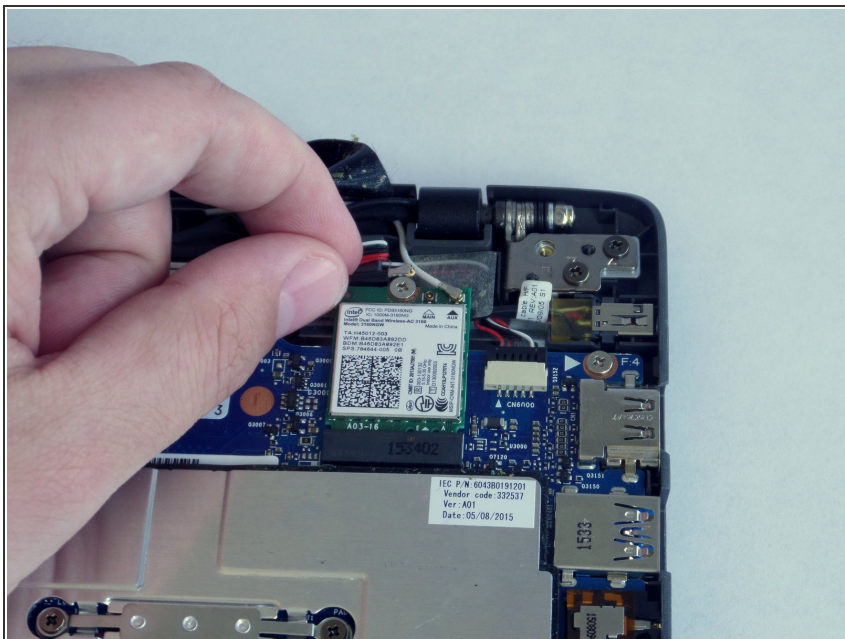
## Step 6 — WiFi Module



- Position the computer so the opening side faces you.
- Remove the tape holding the WiFi module using tweezers.

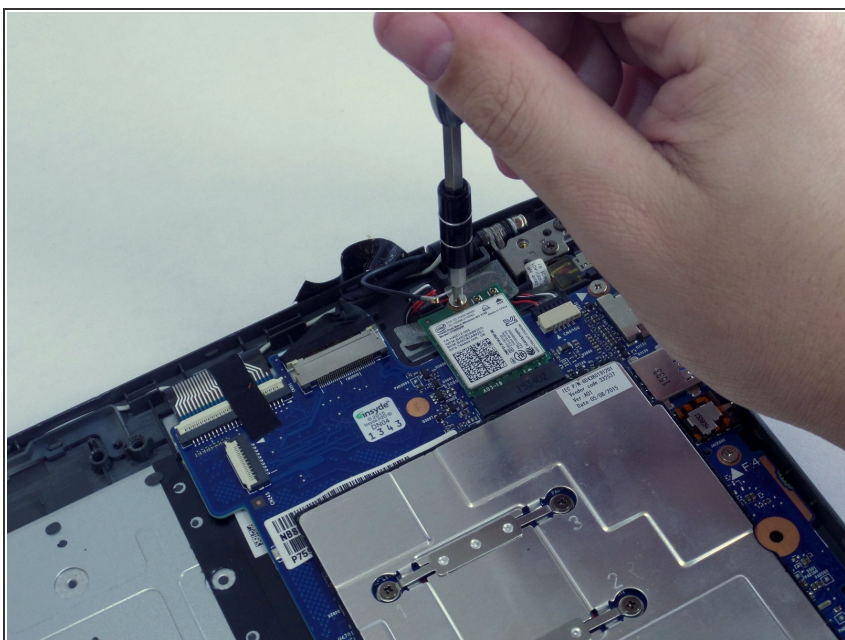


## Step 7



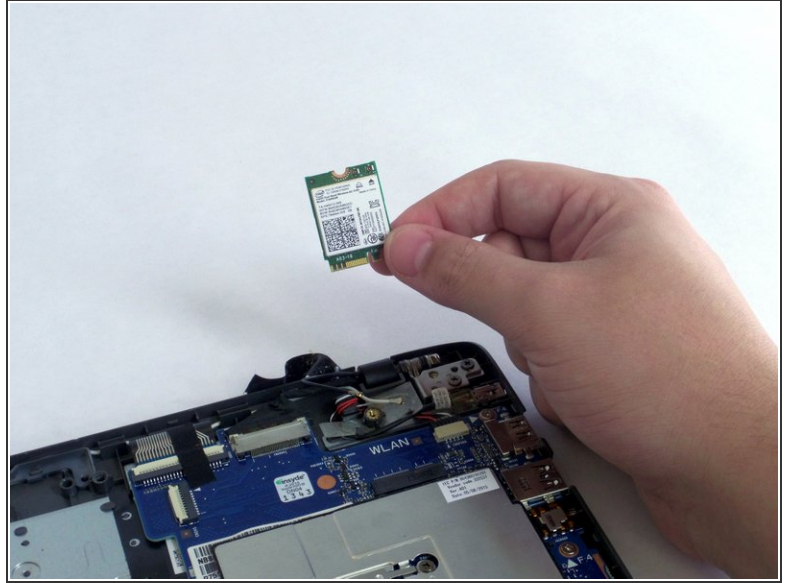
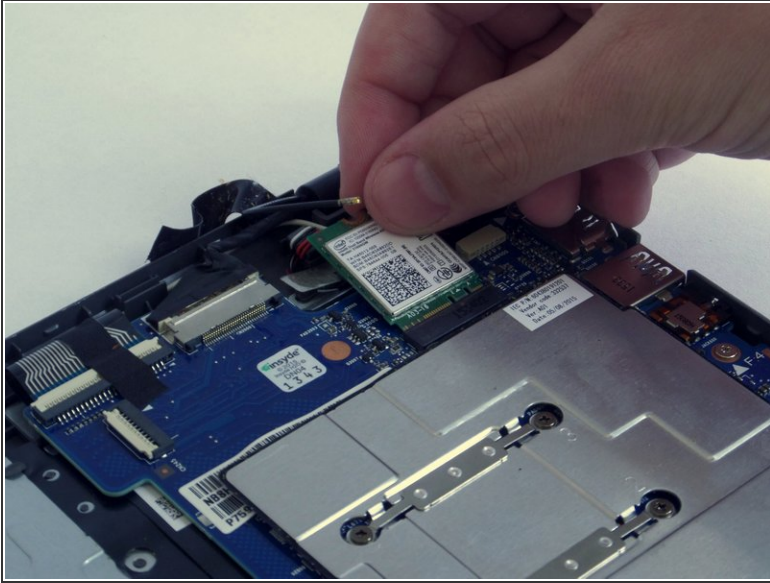
- Unplug the white and black wires by lifting them up by hand or using tweezers.

## Step 8



- Remove the 3-mm screw that holds the WiFi module to the motherboard using the PH0 screwdriver.

## Step 9



- Pull the WiFi module out of the connector.

To reassemble your device, follow these instructions in reverse order.