



Acer Aspire One D255E Hard Drive Replacement

This guide will walk you through replacing the Hard Drive on this device.

Written By: Brian



INTRODUCTION

The hard drive is one of the more crucial components on a computer. There are a variety of different reasons one would want to replace a hard drive including upgrading the size and replacing a malfunctioning component. You should read through the entire guide before performing the repair and should have all necessary tools readily available. You should also find a safe location to store the various screws taken out of the computer to ensure that they do not get mixed up or lost.



TOOLS:

- [Spudger](#) (1)
- [Phillips #0 Screwdriver](#) (1)




PARTS:

- [1 TB SSD / Upgrade Bundle](#) (1)
- [250 GB SSD / Upgrade Bundle](#) (1)
- [500 GB SSD / Upgrade Bundle](#) (1)
- [2 TB SSD / Upgrade Bundle](#) (1)

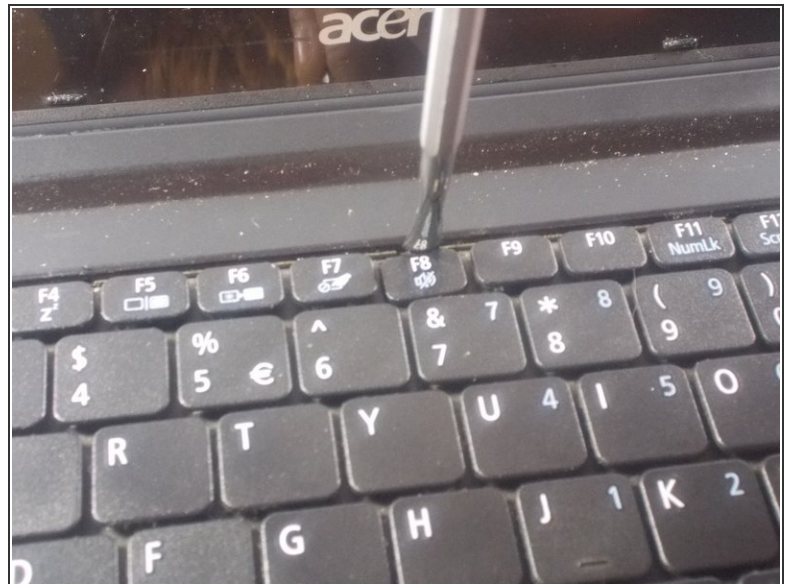
Step 1 — Keyboard



- Start by removing the battery found on the back of the device.

 The battery must be removed in order to ensure the device does not have power! Make sure you do not skip this step!

Step 2





- Using plastic opening tools press down the 6 clips located around the keyboard.

Step 3

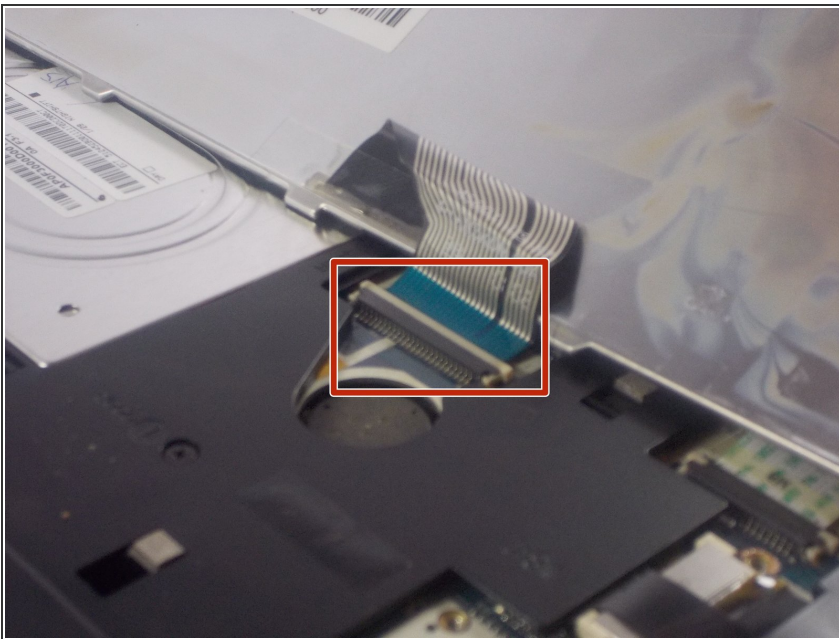


- Using a plastic opening tool or spudger move the keyboard out of position.


 There is a thin cable on the backside of the keyboard. Make sure when you move the keyboard out of position you do so slowly to prevent damage to this cable.

 If you use a spudger it is recommended that you use a plastic spudger to reduce the chance of damaging any internal parts.

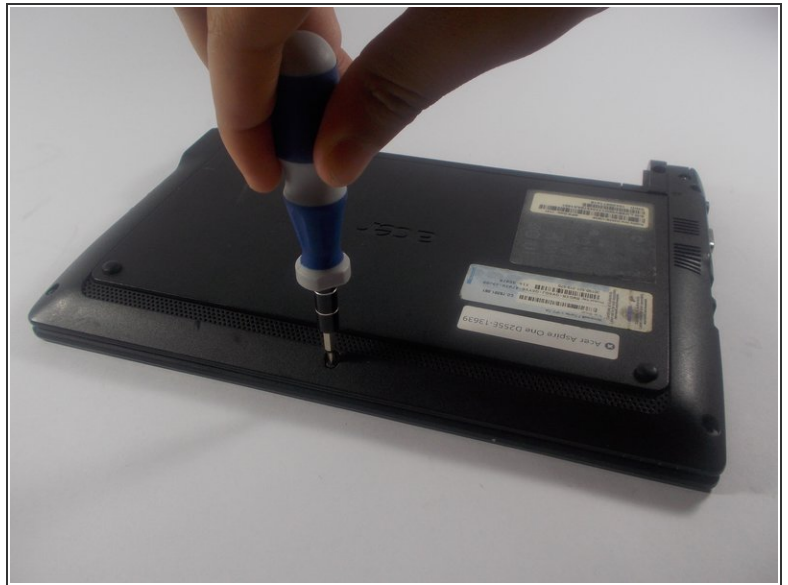
Step 4



- Using a spudger gently push the tab on the port forward then pull out the cable.

 Be careful to do so as gently as possible. You do not want to damage the port.

Step 5 — Back Panel



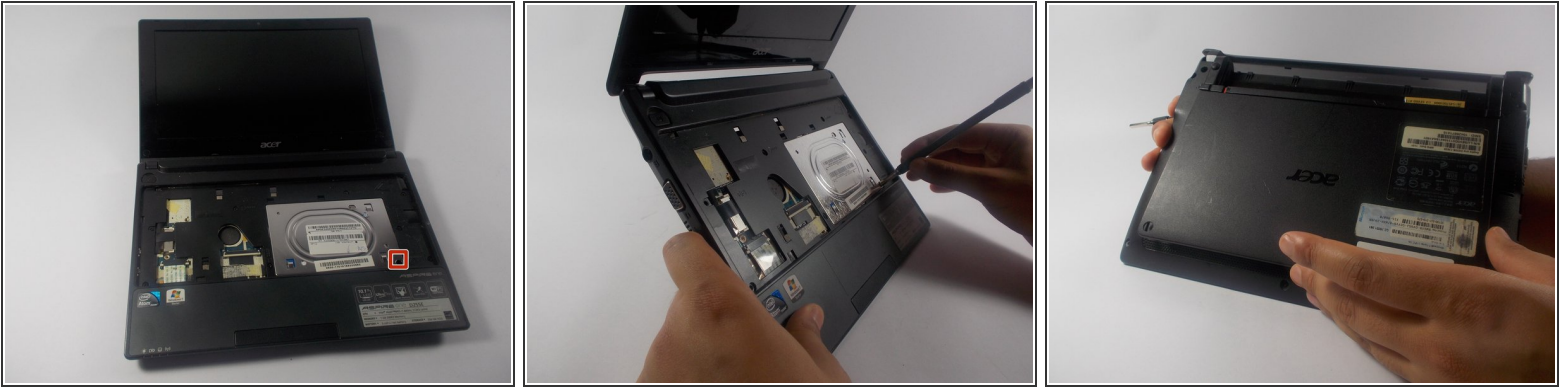
- Unscrew seven 1.2 mm Phillips #1 screws from the back of the device

Step 6



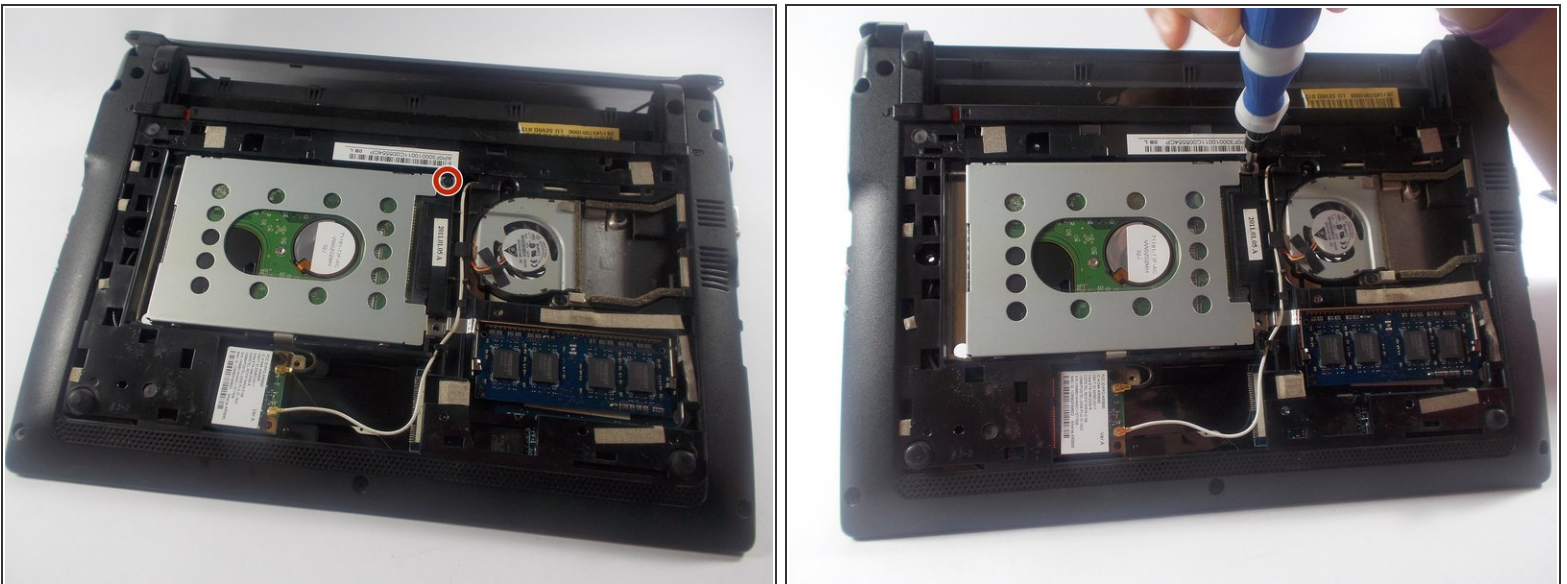
- Unscrew eight more 1.2 mm Phillips #1 screws from the front of the computer.

Step 7



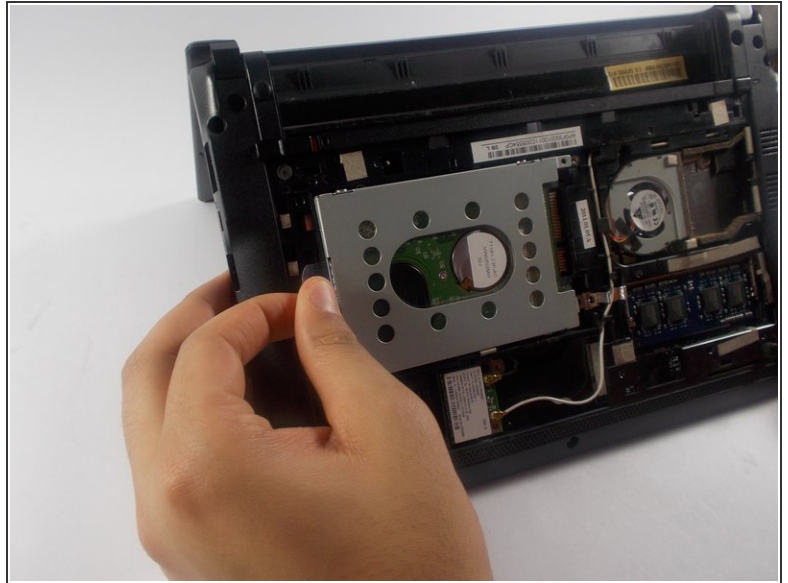
- Using a spudger carefully push through the hole to dislodge the panel on the back of the device then remove the panel by hand.
- ⓘ It is recommended that you use a plastic spudger to reduce the chance of damaging any internal parts.

Step 8 — Hard Drive



- Remove the single 1.2 mm Phillips #1 screw from the Hard Drive.

Step 9



- Using the tab on the side of the Hard Drive, pull out the Hard Drive.

To reassemble your device, follow these instructions in reverse order.