



# Acer Aspire One D255E RAM Replacement

This guide will walk you through replacing the RAM in the device.

Written By: Brian



## INTRODUCTION

The RAM on a computer is used to store temporary information for your computer to run swiftly. If your computer seems to stutter or slow down it might mean that you could use an upgrade of the RAM. RAM upgrades are one of the more common upgrades in a computer unit. You should read through the entire guide before performing the repair and should have all necessary tools readily available. You should also find a safe location to store the various screws taken out of the computer to ensure that they do not get mixed up or lost.

---

### TOOLS:

- [Spudger](#) (1)
  - [Phillips #0 Screwdriver](#) (1)
-

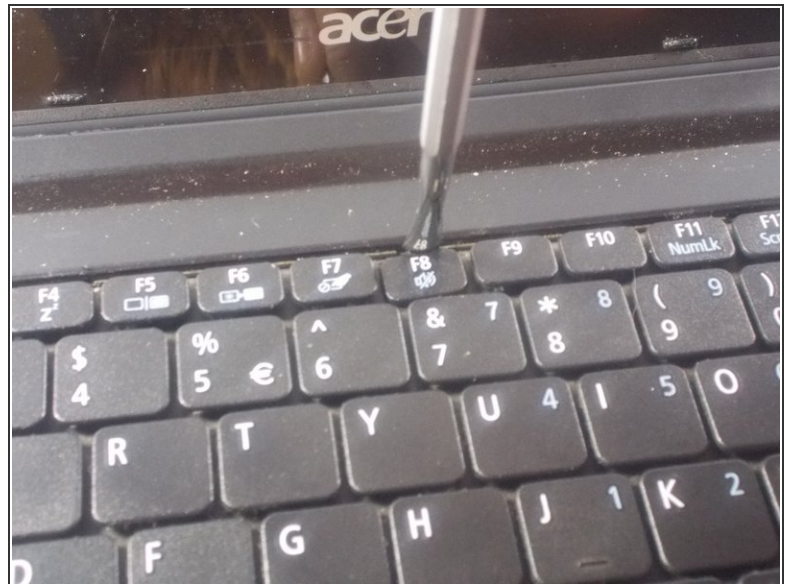
## Step 1 — Keyboard



- Start by removing the battery found on the back of the device.

⚠ The battery must be removed in order to ensure the device does not have power! Make sure you do not skip this step!

## Step 2




- Using plastic opening tools press down the 6 clips located around the keyboard.




### Step 3

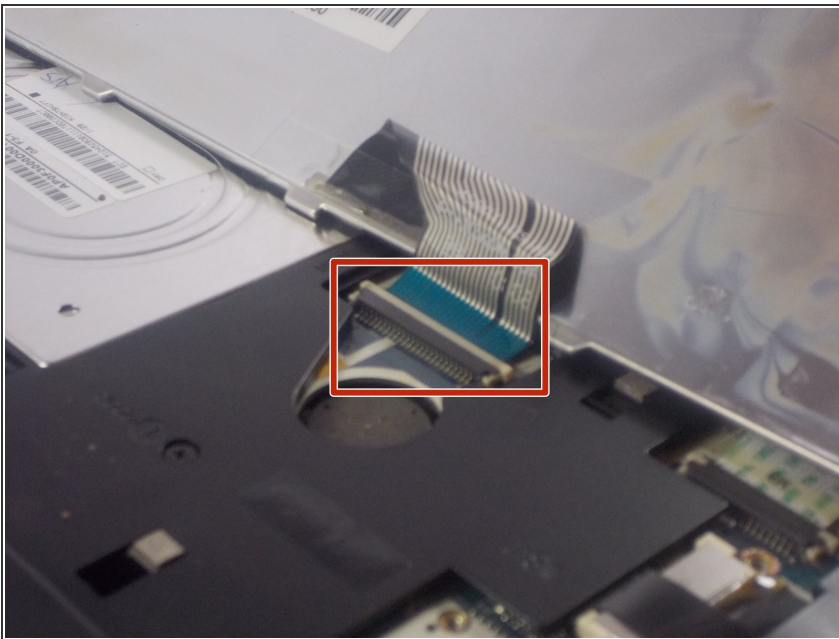


- Using a plastic opening tool or spudger move the keyboard out of position.


 There is a thin cable on the backside of the keyboard. Make sure when you move the keyboard out of position you do so slowly to prevent damage to this cable.

 If you use a spudger it is recommended that you use a plastic spudger to reduce the chance of damaging any internal parts.

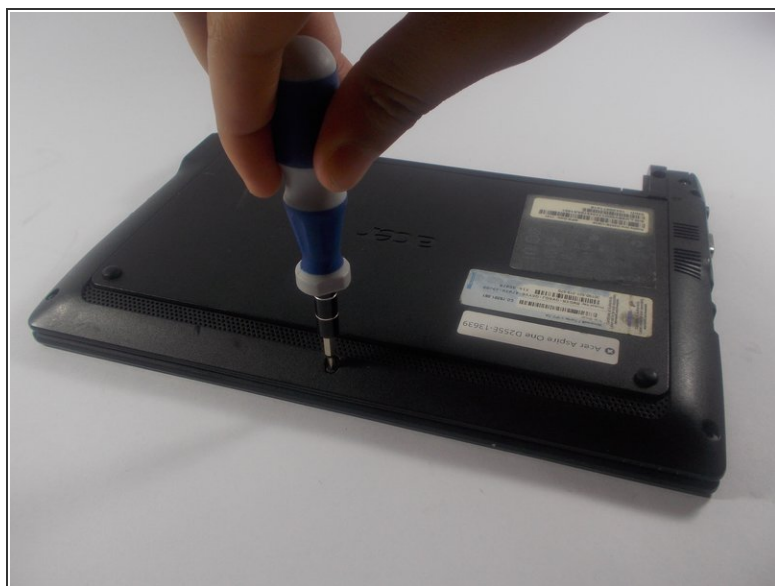
### Step 4



- Using a spudger gently push the tab on the port forward then pull out the cable.

 Be careful to do so as gently as possible. You do not want to damage the port.

## Step 5 — Back Panel



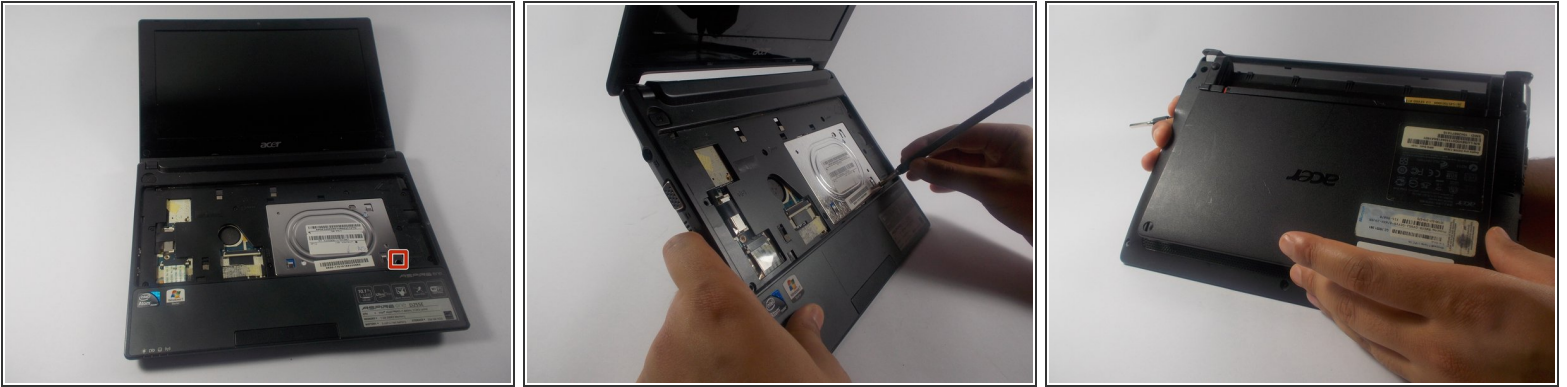
- Unscrew seven 1.2 mm Phillips #1 screws from the back of the device

## Step 6



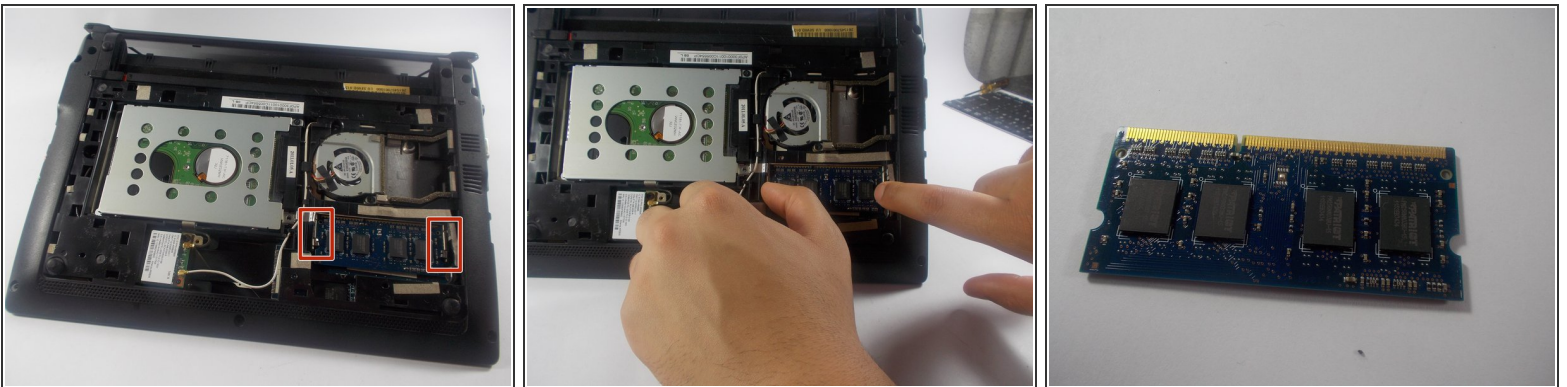
- Unscrew eight more 1.2 mm Phillips #1 screws from the front of the computer.

## Step 7



- Using a spudger carefully push through the hole to dislodge the panel on the back of the device then remove the panel by hand.
- ⓘ It is recommended that you use a plastic spudger to reduce the chance of damaging any internal parts.

## Step 8 — RAM



- Using your hands pull apart the two clips holding the RAM in then pull out the RAM.
- It uses (DDR3) 204pin PC3-10600 1333MHz DDR3 SO-DIMM Memory Modules

To reassemble your device, follow these instructions in reverse order.