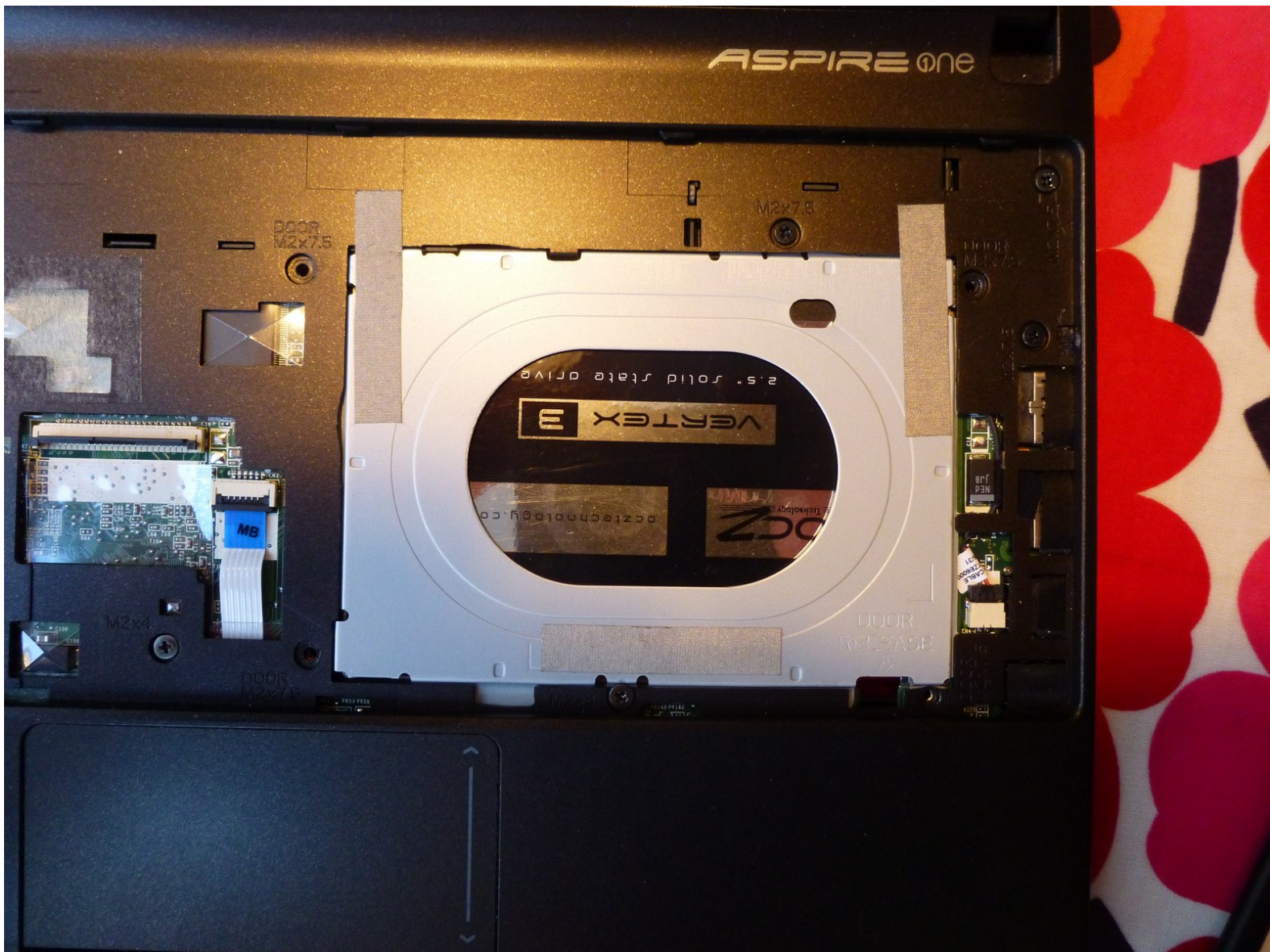




Acer Aspire One D257 HDD Replacement

Describes how to replace the HDD from the netbook.

Written By: Claes



INTRODUCTION

Describes how you replace the HDD from the netbook.

TOOLS:

- [Jimmy](#) (1)

EU145259

- [Spudger](#) (1)
 - [Metal Spudger](#) (1)
 - [Phillips #1 Screwdriver](#) (1)
-

Step 1 — Battery



- Put the netbook, so the back side is upwards.

Step 2



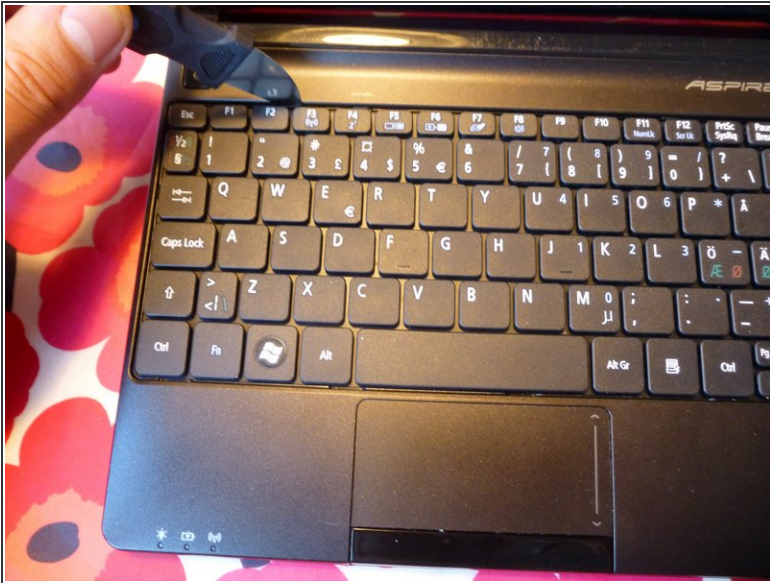
- Push the right lock to the right so the red filed is visible on the left.

Step 3



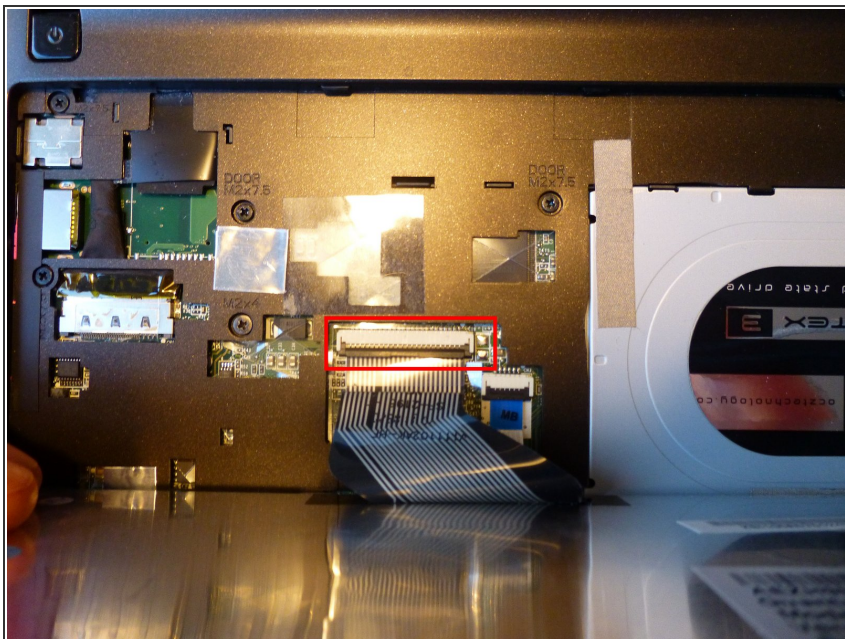
- Now move the left lock which is spring loaded to the left and keep it there. Then with the other hand remove the battery by pulling down.
- When reassembling the new battery push it up into the netbook and do lock the right by moving it to the left so the red field disappears.

Step 4 — Keyboard



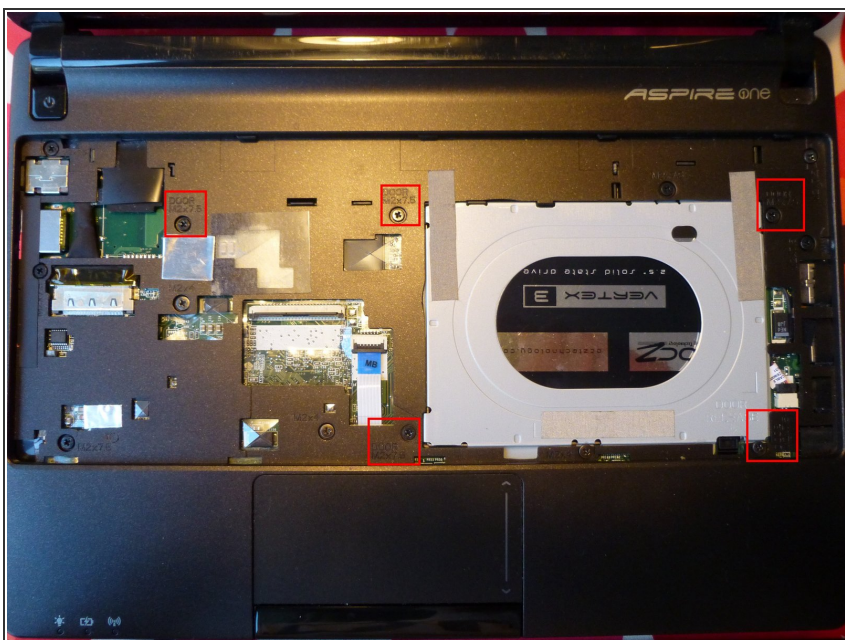
- Open the lid of the netbook. Use the Jimmy from the upper left corner of the keyboard. Put it between the keyboard and the casing and move it to the right. It might help to use a metal spudger to push in the pins holding the keyboard in place.
- Then move down along the sides where there is one pin on each side. After that twist the keyboard towards you.

Step 5



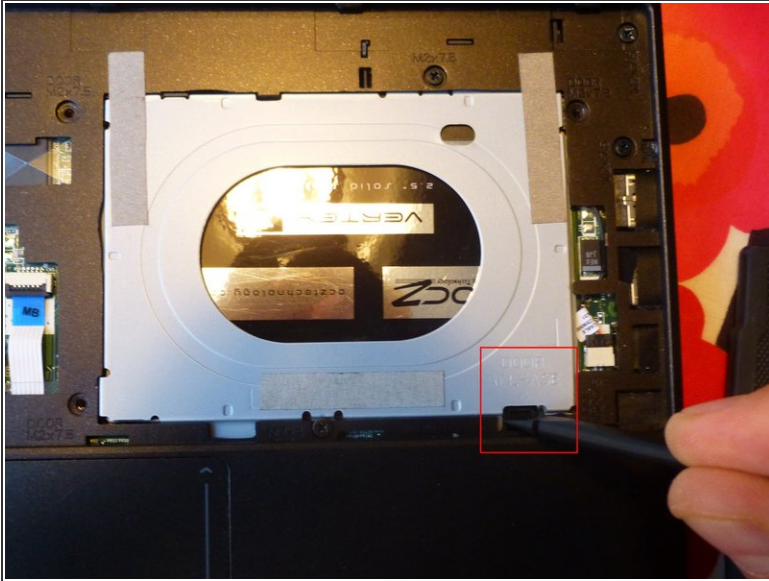
- Now open the brown connector so the flat cable is loose. Then you can remove the keyboard.

Step 6 — Acer Aspire One D257 opening the hatch



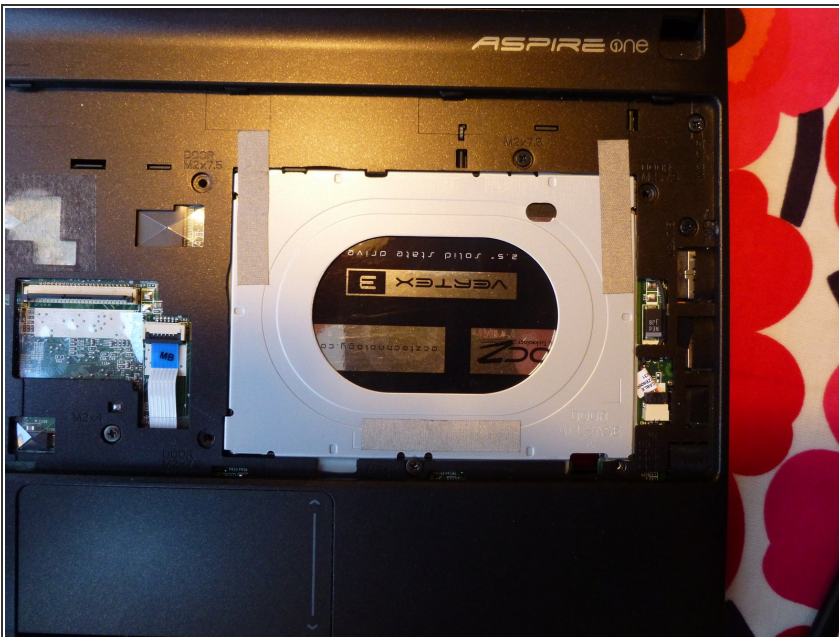
- Remove the 5 screws marked with "Door".

Step 7



- Use a spudger or flat screwdriver to push down the hatch where it is marked "Door release".
- Now you can carefully remove the hatch.
- When reassembling the hatch look that the noses are aimed at the appropriate holes in the case, then you can press down the rest of the hatch onto the netbook.

Step 8 — Harddisk Drive



- The hard disk drive is under the lightgrey casing and not screw to it.

Step 9



- Now push the HDD downwards with the finger through the hole.

Step 10



- Remove the SATA connector from the hard disk drive.
- Now you can connect any SATA-HDD or SSD.

To reassemble your device, follow these instructions in reverse order.