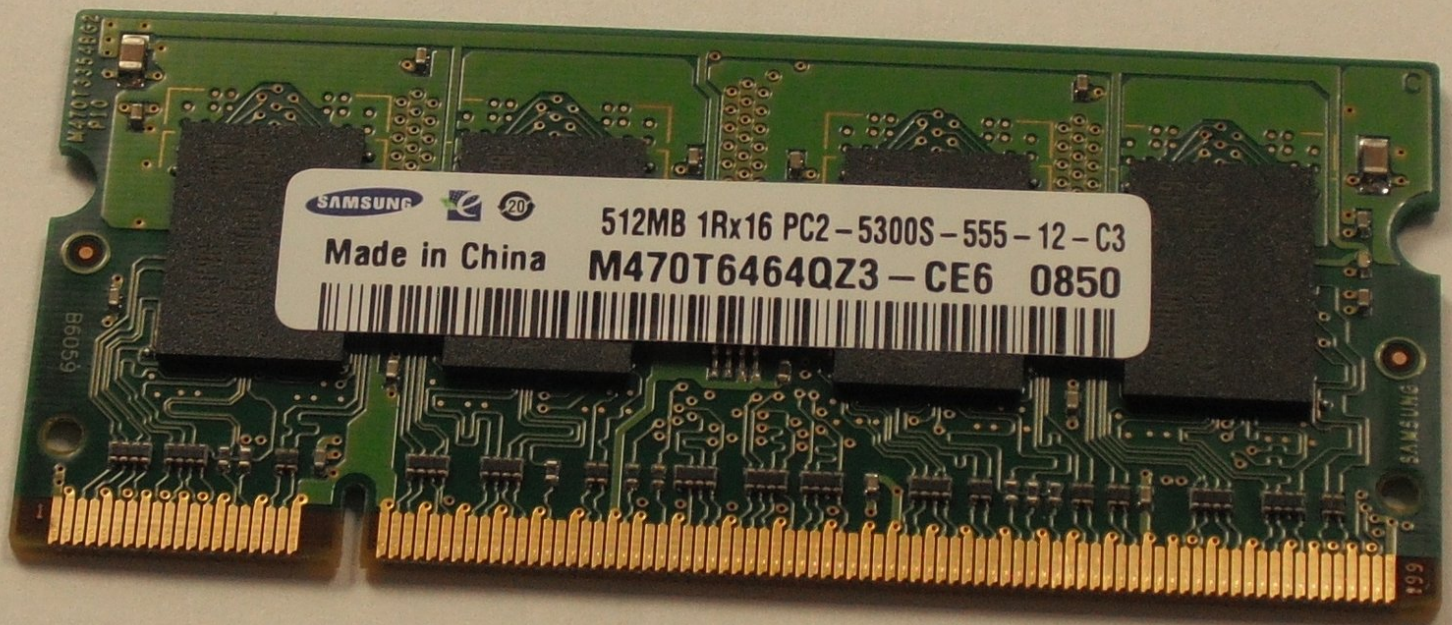




Acer Aspire One ZG5 RAM Replacement

Replace the RAM in your Acer Aspire One ZG5.

Written By: Doug Gallatin



INTRODUCTION

Use this guide to replace or upgrade the RAM in the Acer Aspire One ZG5.



TOOLS:

- [Phillips #0 Screwdriver](#) (1)
- [Phillips #1 Screwdriver](#) (1)
- [Spudger](#) (1)



PARTS:

- [PC2-5300 512 MB RAM Chip](#) (1)
- [PC2-5300 1 GB RAM Chip](#) (1)

Step 1 — Battery



- Turn the netbook upside down with the battery at the top, away from you.

Step 2



- Unlock the battery by sliding the switch located near the left hinge to the left "unlocked" position.

Step 3



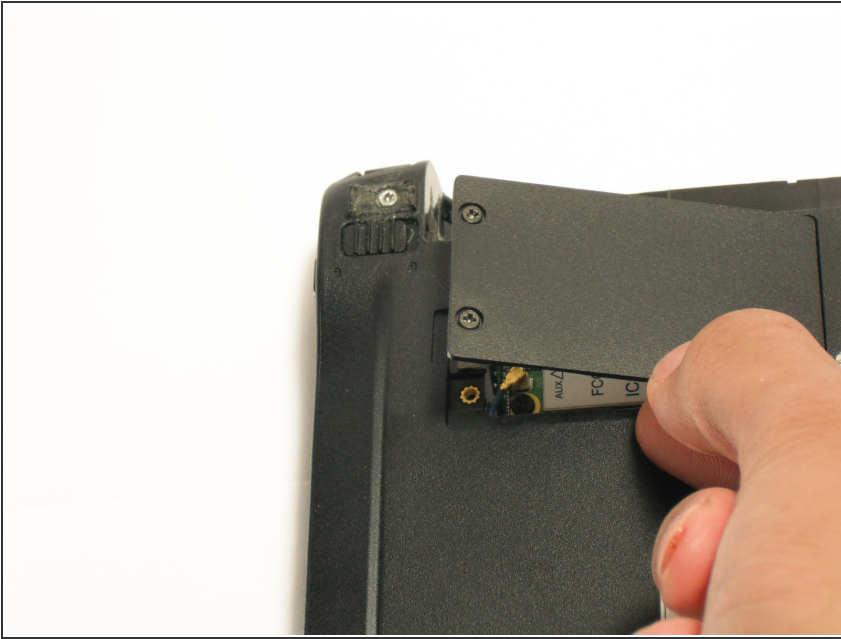
- Slide the latch located on the opposite hinge from the lock while pushing the battery up.

Step 4 — Wireless Card



- Gently loosen the two Phillips #0 screws in the small panel that covers the wireless card.
- ⓘ These screws are built into the panel and aren't meant to be completely removed.

Step 5



- Lift up the panel and remove it from the case.

Step 6



- Disconnect the two antenna cables from the left side of the wireless card.

Step 7



- Remove the single 3.9 mm Phillips #1 screw from the bottom left of the wireless card.

Step 8



- Gently lift up the left side of the wireless card and slide the card out of its socket.

Step 9 — Keyboard



- Turn the netbook over and open the display so that the keyboard is facing you.

Step 10



- There are three tabs located on the top of the keyboard.
- Start with the spudger pointing towards the display and pry up to push each tab off the keyboard.
- As you move to the next tab, ensure the previous tab doesn't reset itself.

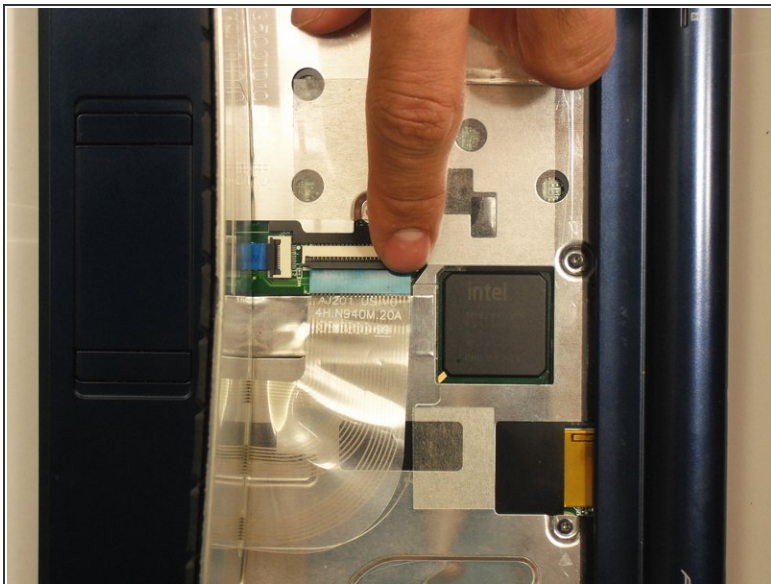
Step 11



- Lift top of keyboard up. If it doesn't lift easily, there may be tabs on the sides - use the tool to ease them aside and/or shift the keyboard from side to side.

⚠ There is a short ribbon cable connecting the keyboard to the netbook.

Step 12



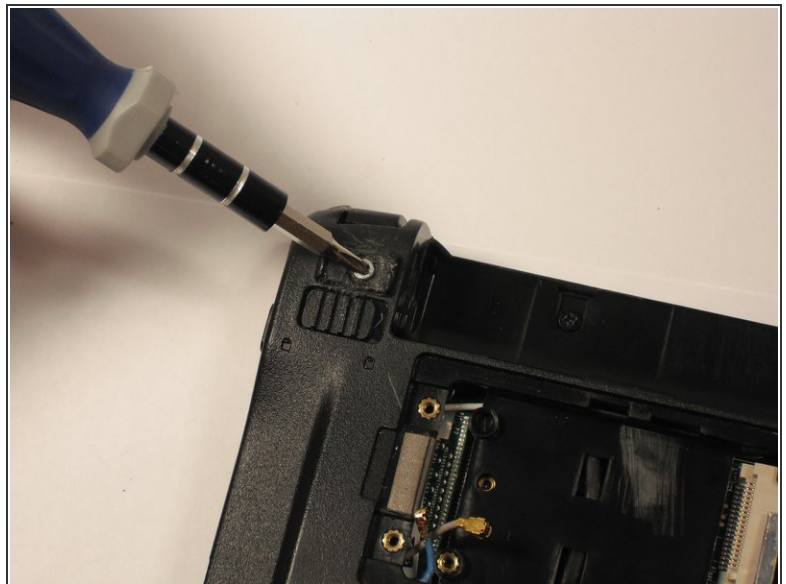
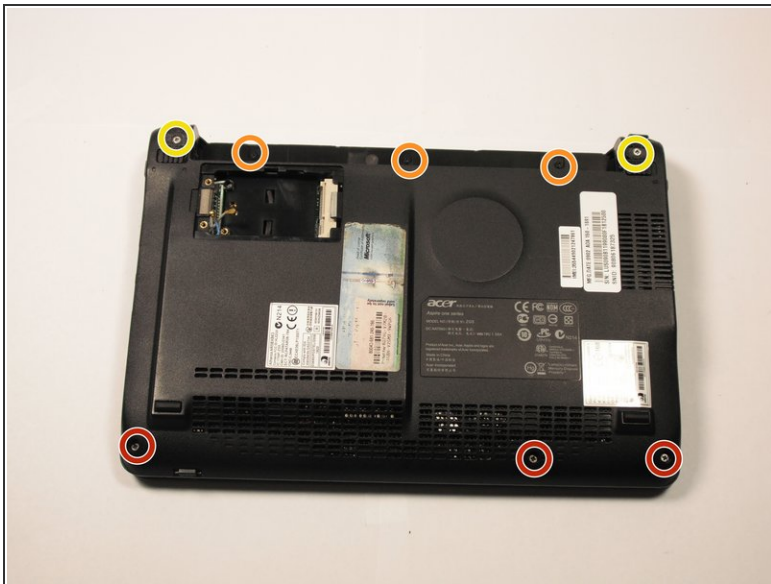
- Disconnect the ribbon by lifting the black plastic hinge and removing the clear blue cable.

Step 13 — Top Case



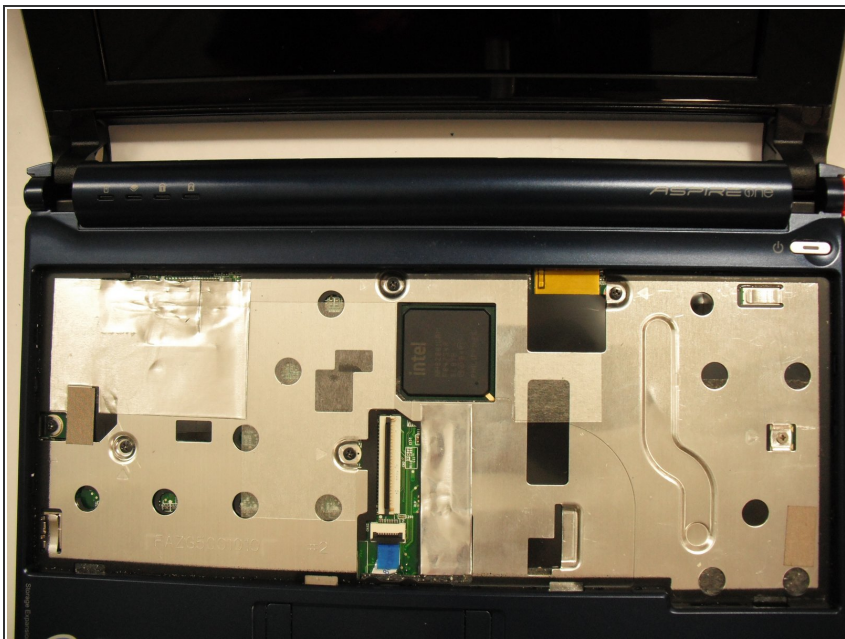
- Close the display and turn the ZG5 over so that the battery compartment faces away from you.

Step 14



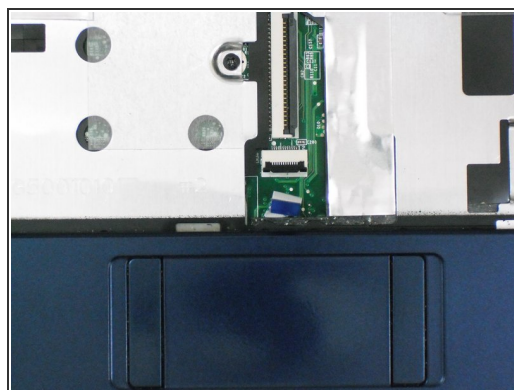
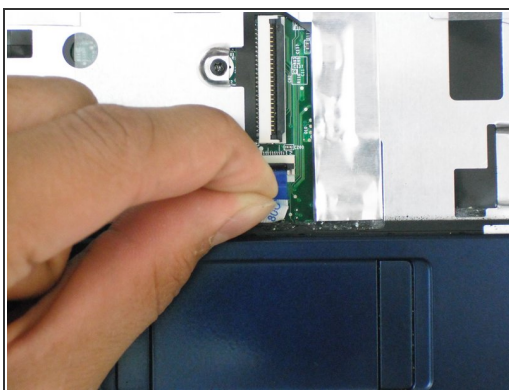
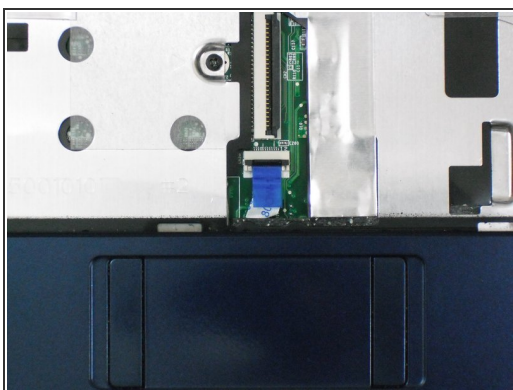
- Remove three 5.8 mm Phillips #0 screws from the bottom of the case
- Remove three 3.9 mm Phillips #1 screws from the battery compartment.
- Remove two 5.8 mm Phillips #0 screws from underneath the feet near the hinges.

Step 15



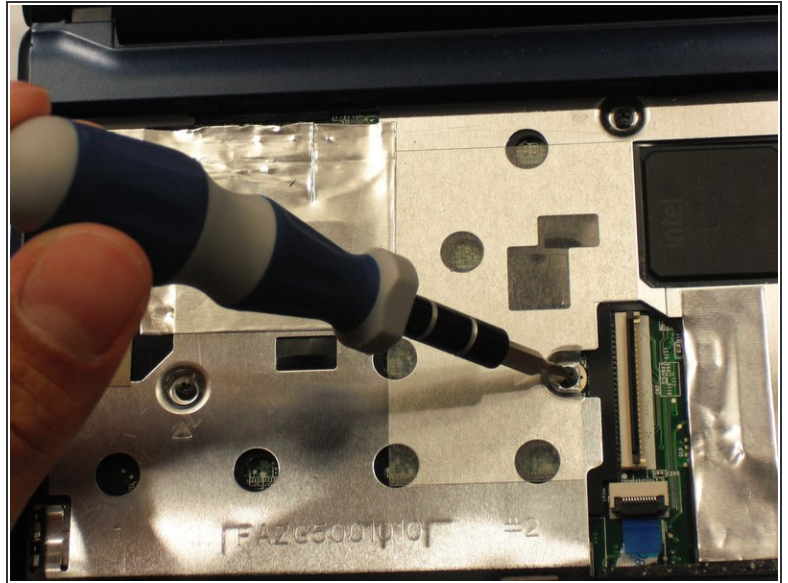
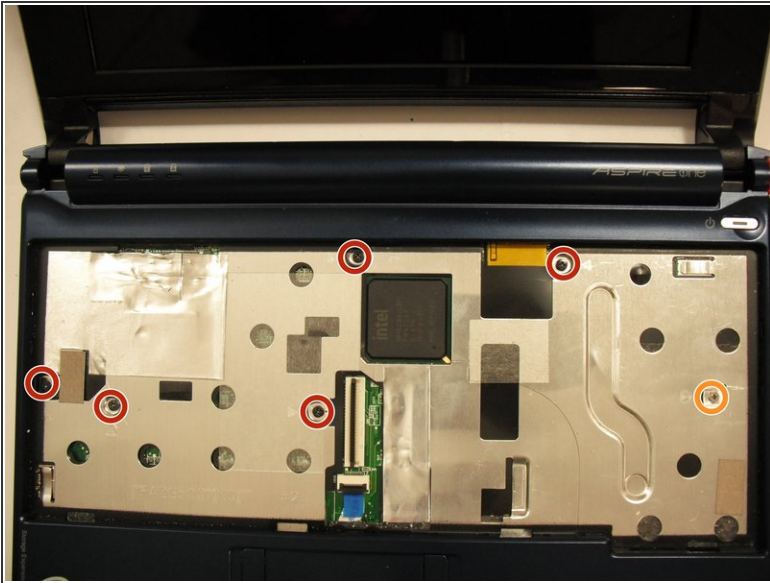
- Turn the netbook back over and open the display with the keyboard cavity facing you.

Step 16



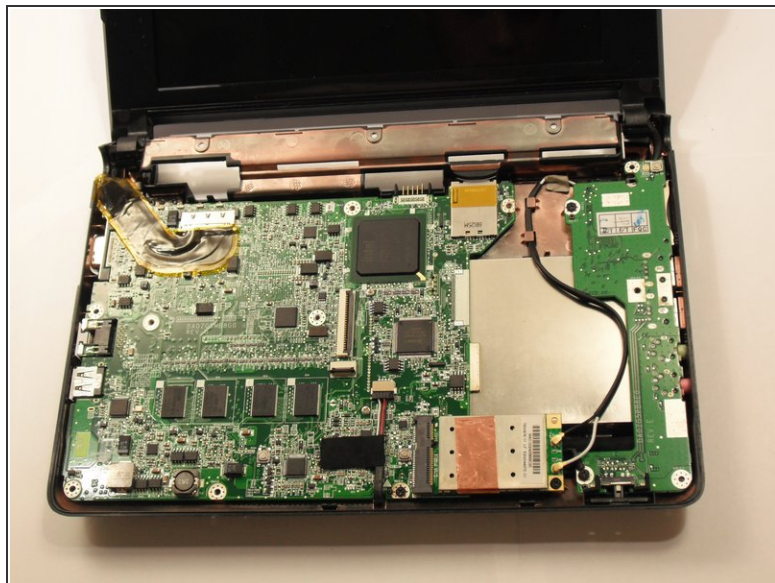
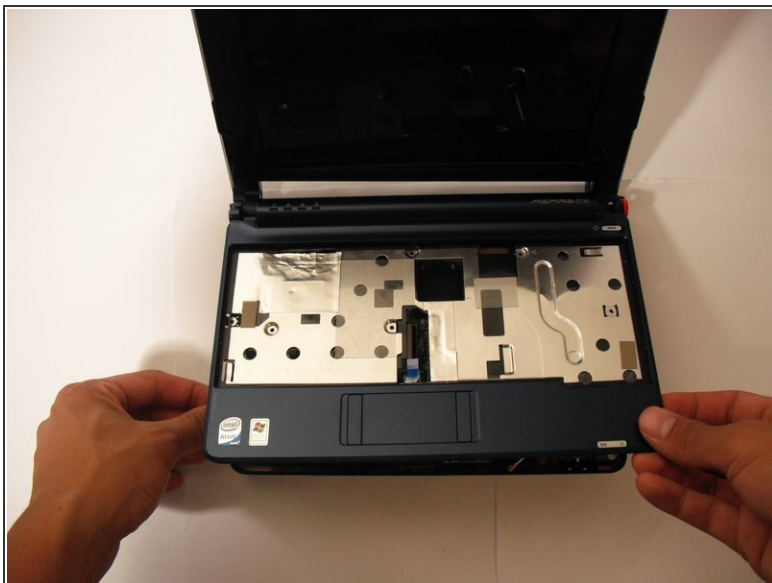
- Flip up the retaining flap on the trackpad ribbon cable ZIF connector.
- Using the blue tab, pull the trackpad ribbon cable from its socket on the motherboard.

Step 17



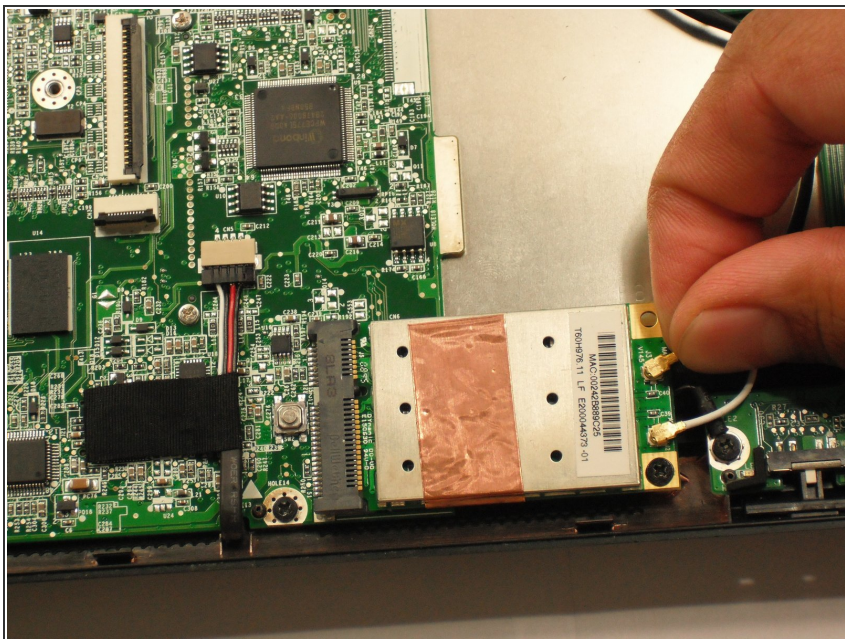
- Remove the five black 4.7 mm Phillips #0 screws from the metal casing.
- Remove the single silver 4.3 mm Phillips #00 screw from the right side of the metal casing.

Step 18



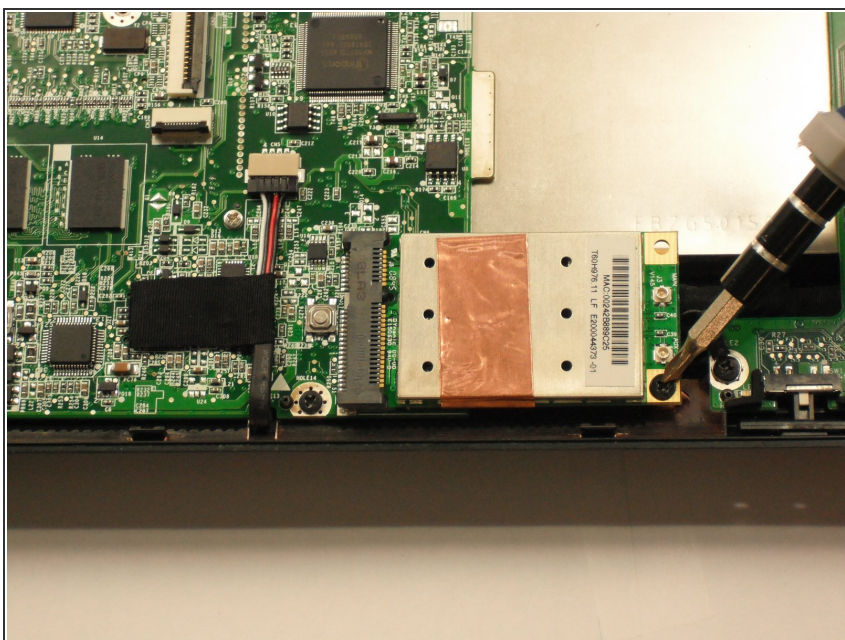
- Starting at the red rings along the hinge, insert a spudger or plastic opening tool into the seam between the two halves of the case.
- Slide the spudger toward the front of the device, releasing the small clips that hold down the top case.
- Gently lift off the top case.

Step 19 — Internal Wireless Card



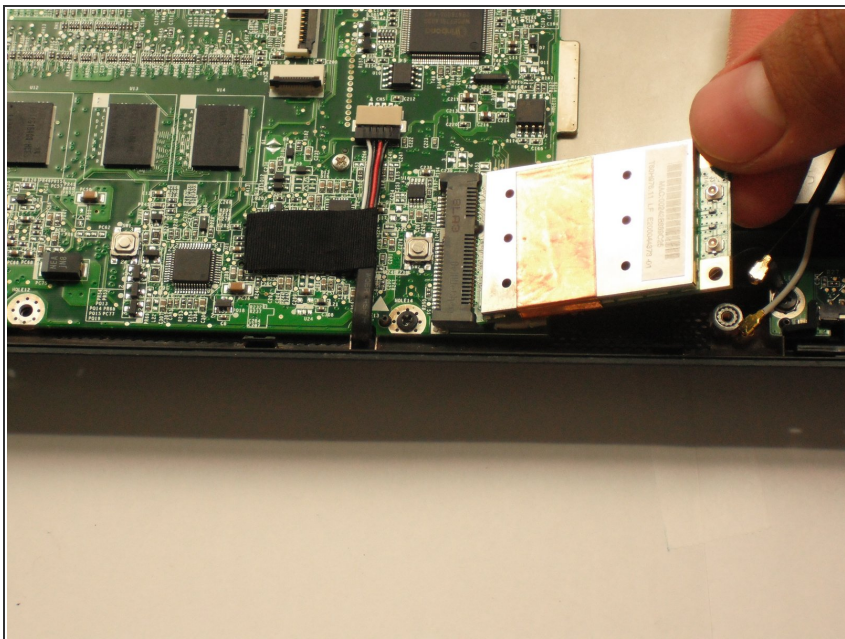
- Disconnect the two antenna cables from the right side of the wireless card.

Step 20



- Remove the single 3.9 mm Phillips #1 screw from the wireless card.

Step 21



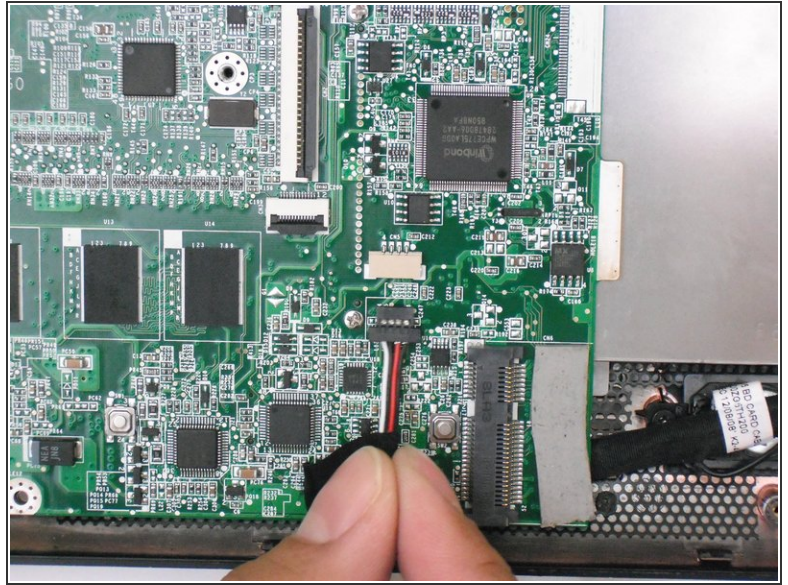
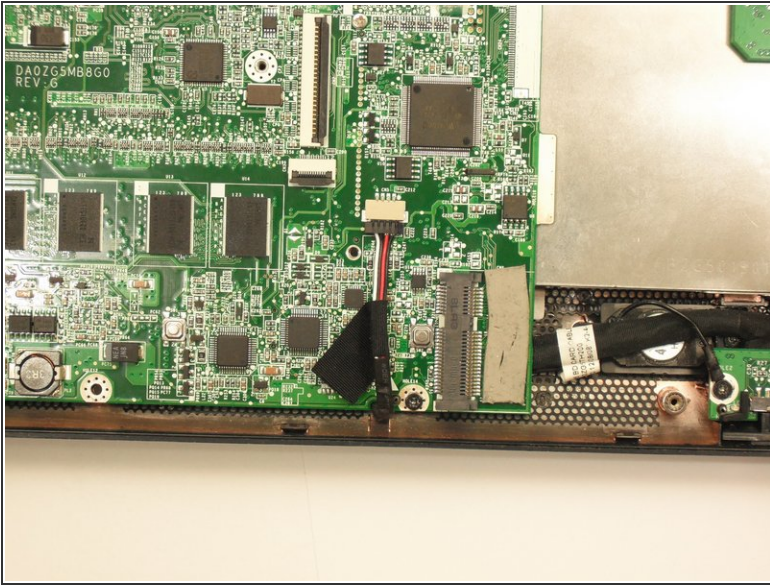
- Gently pull the wireless card to the right and slide it out of its socket.

Step 22 — Motherboard



- Disconnect the display cable from the top left of the motherboard.

Step 23



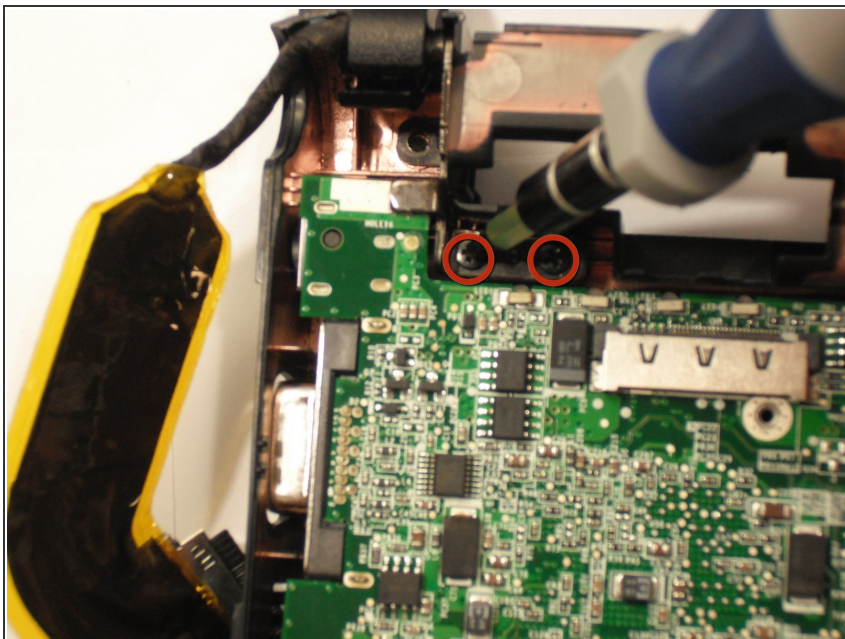
- Disconnect the speaker cable from its socket on the motherboard.

Step 24



- Remove three 3.9 mm Phillips #1 screws from the small I/O board.
- Remove a single 3.9 mm Phillips #0 screw from the front of the motherboard.
- ⓘ Some laptops may instead have a single 4.7 mm Phillips #0 screw.

Step 25



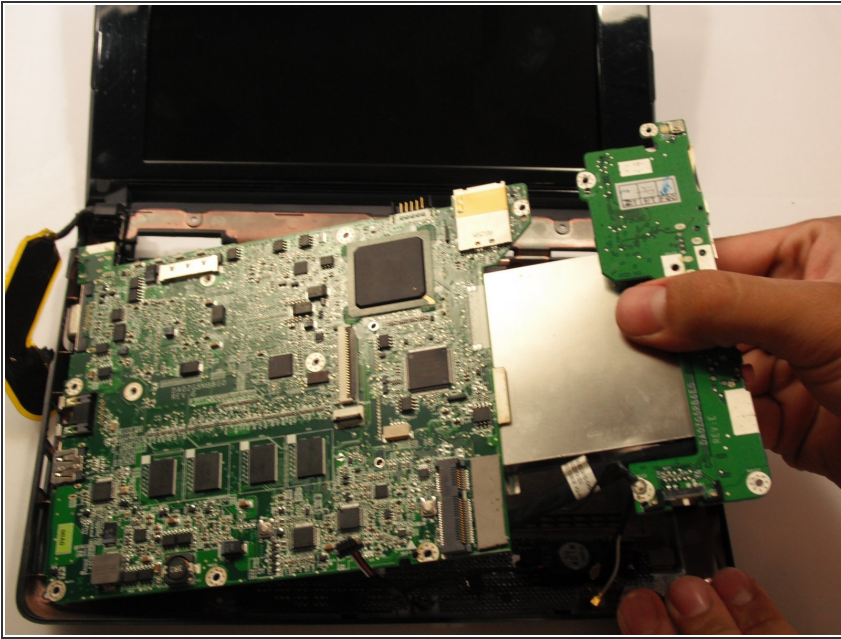
- Remove the two 4.7 mm Phillips #1 screws that connect the display to the motherboard.

Step 26



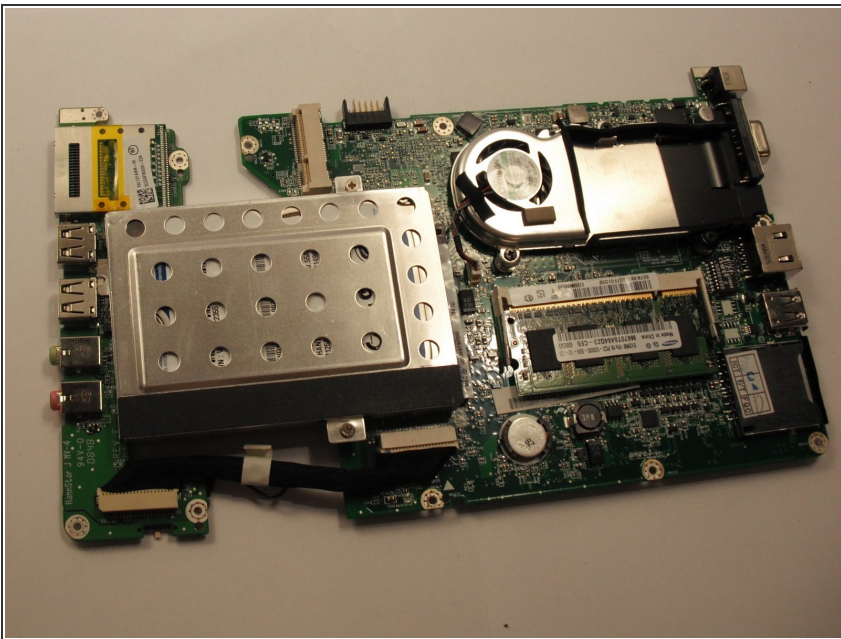
- Gently lift the I/O board up from the right side of the case.
- ⓘ The I/O board is attached to the motherboard by a short cable.

Step 27



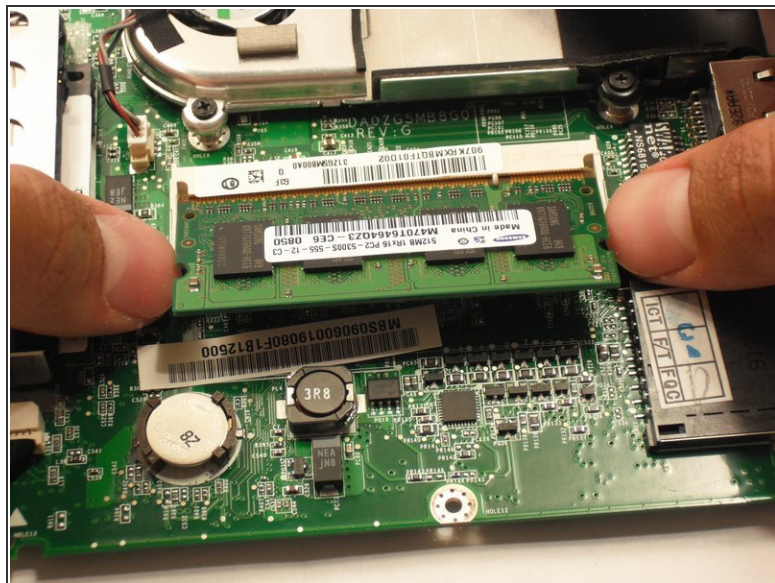
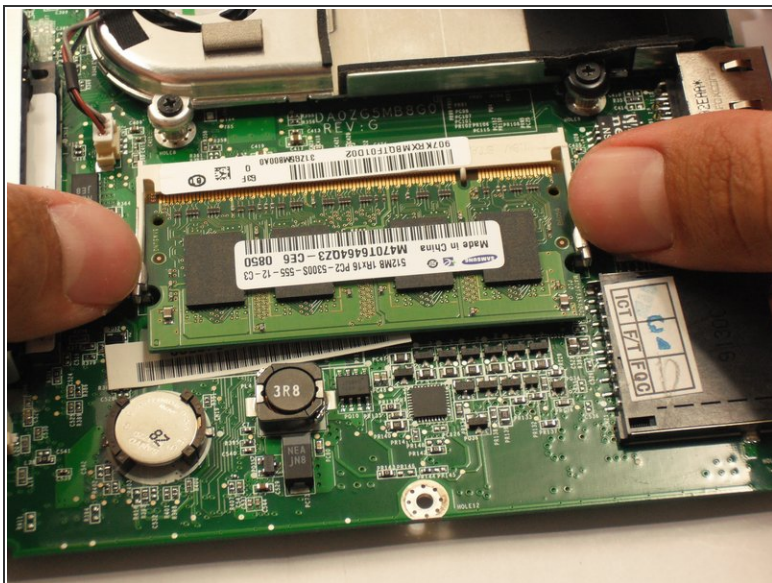
- Lift the entire motherboard assembly out the case.

Step 28 — RAM



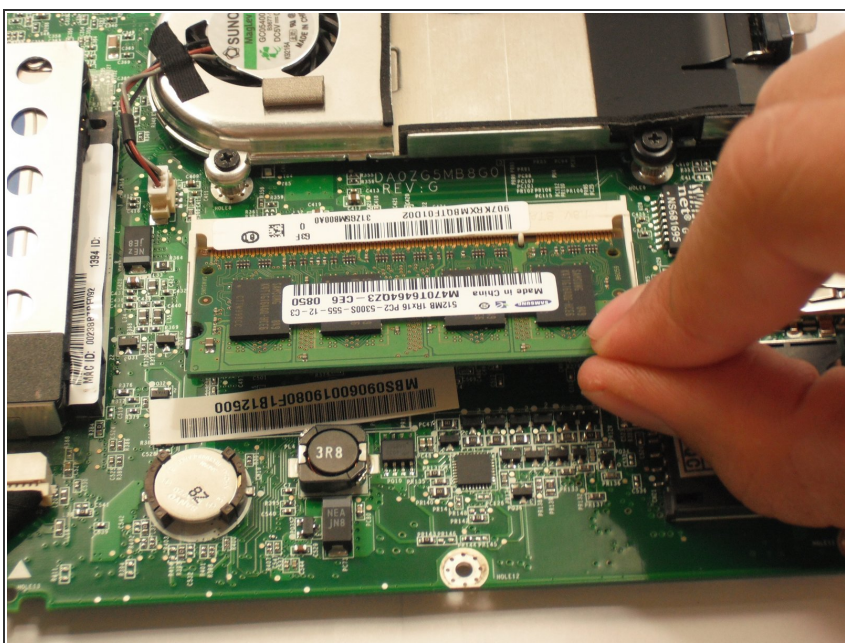
- Turn the motherboard over so the RAM is facing up.

Step 29



- Simultaneously release both latches on opposing sides of the RAM.
- The RAM should spring up.

Step 30



- Pull RAM straight out from the slot.

To reassemble your device, follow these instructions in reverse order.