



# Acer Aspire One ZG5 Speakers Replacement

This guide will show you how to install a new set of speakers

Written By: Doug Gallatin



## INTRODUCTION

After removing the motherboard it is relatively straight forward to get to the speakers.

---

### TOOLS:

- [Phillips #0 Screwdriver](#) (1)
  - [Phillips #1 Screwdriver](#) (1)
  - [Spudger](#) (1)
-

## Step 1 — Battery



- Turn the netbook upside down with the battery at the top, away from you.

## Step 2



- Unlock the battery by sliding the switch located near the left hinge to the left "unlocked" position.

## Step 3



- Slide the latch located on the opposite hinge from the lock while pushing the battery up.

## Step 4 — Wireless Card



- Gently loosen the two Phillips #0 screws in the small panel that covers the wireless card.
- ⓘ These screws are built into the panel and aren't meant to be completely removed.

## Step 5



- Lift up the panel and remove it from the case.

## Step 6



- Disconnect the two antenna cables from the left side of the wireless card.

## Step 7



- Remove the single 3.9 mm Phillips #1 screw from the bottom left of the wireless card.

## Step 8



- Gently lift up the left side of the wireless card and slide the card out of its socket.

## Step 9 — Keyboard



- Turn the netbook over and open the display so that the keyboard is facing you.

## Step 10



- There are three tabs located on the top of the keyboard.
- Start with the spudger pointing towards the display and pry up to push each tab off the keyboard.
- As you move to the next tab, ensure the previous tab doesn't reset itself.

## Step 11



-  There is a short ribbon cable connecting the keyboard to the netbook.

## Step 12



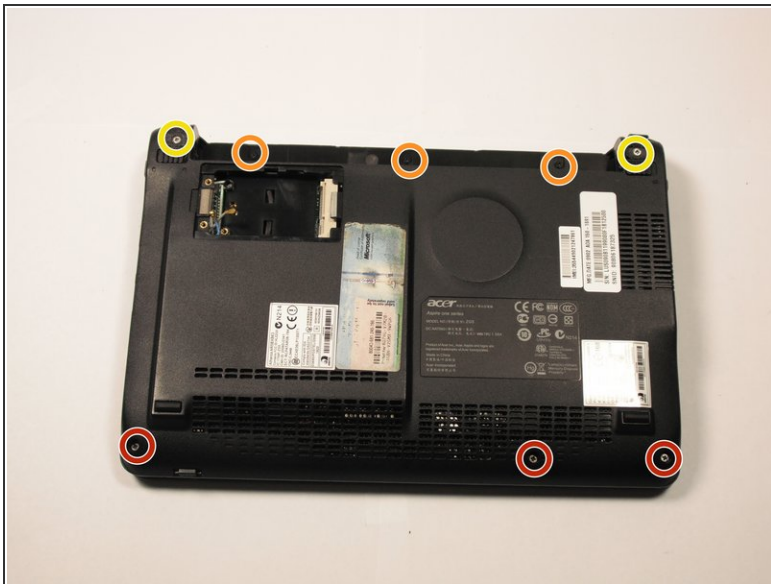
- This document was generated on 2019-09-30 10:26:02 AM (MST).
- 
- iFixit — CC BY-NC-SA      www.iFixit.com      Page 8 of 18

## Step 13 — Top Case



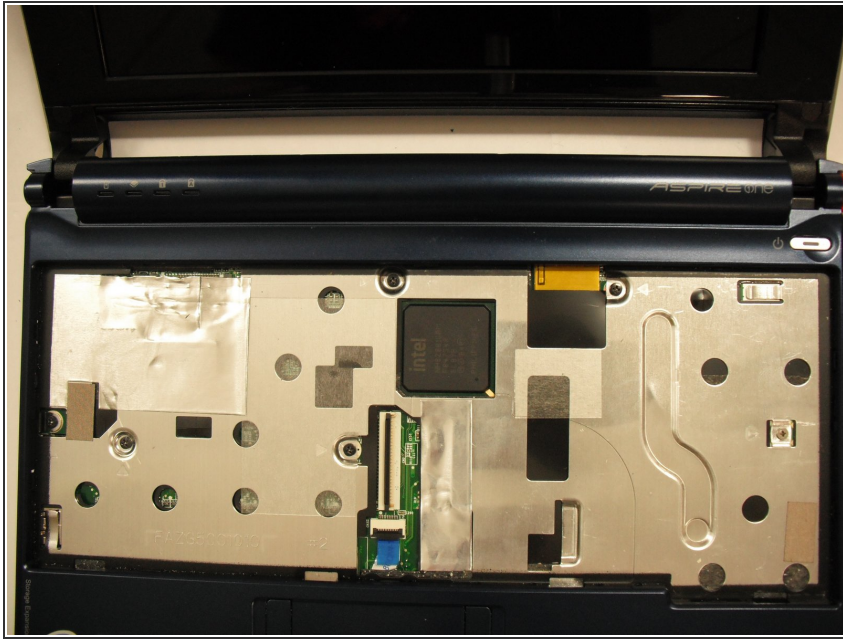
- Close the display and turn the ZG5 over so that the battery compartment faces away from you.

## Step 14



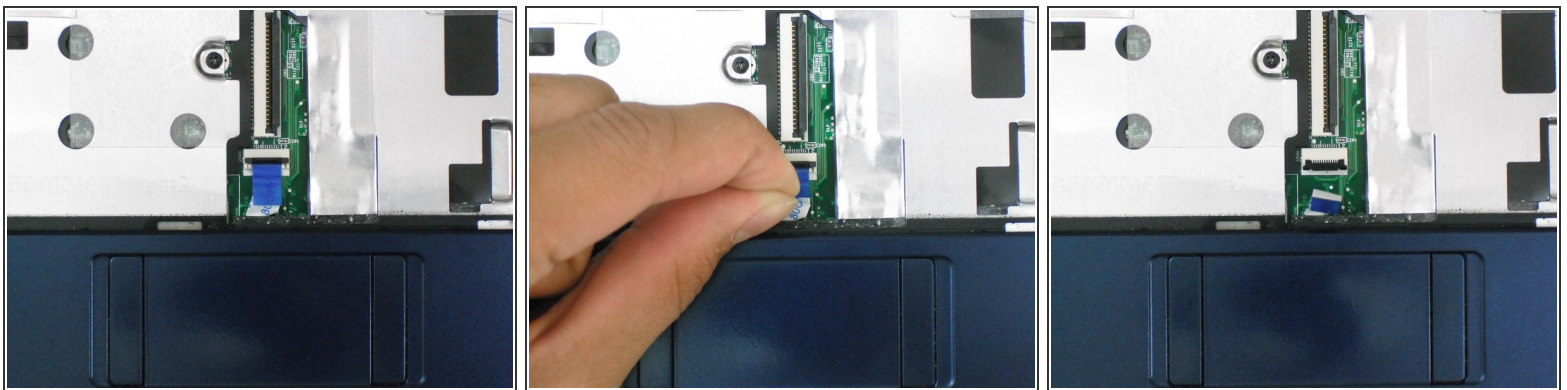
- Remove three 5.8 mm Phillips #0 screws from the bottom of the case
- Remove three 3.9 mm Phillips #1 screws from the battery compartment.
- Remove two 5.8 mm Phillips #0 screws from underneath the feet near the hinges.

## Step 15



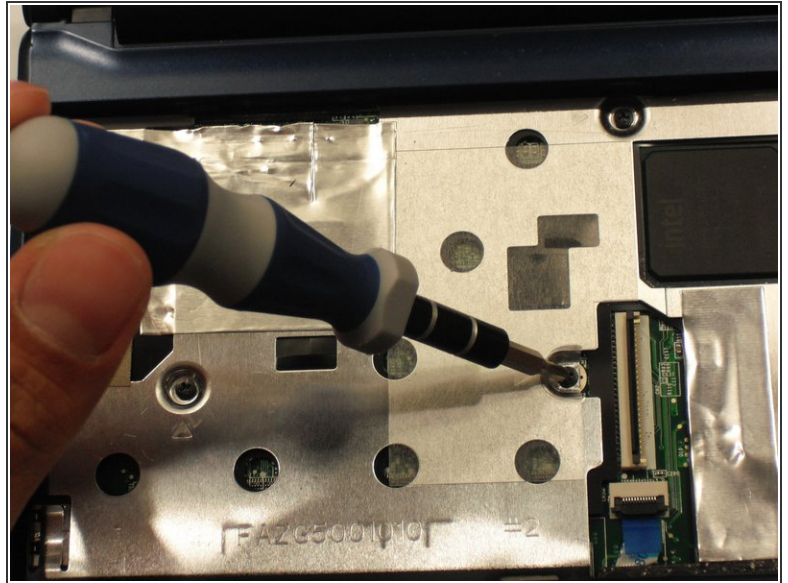
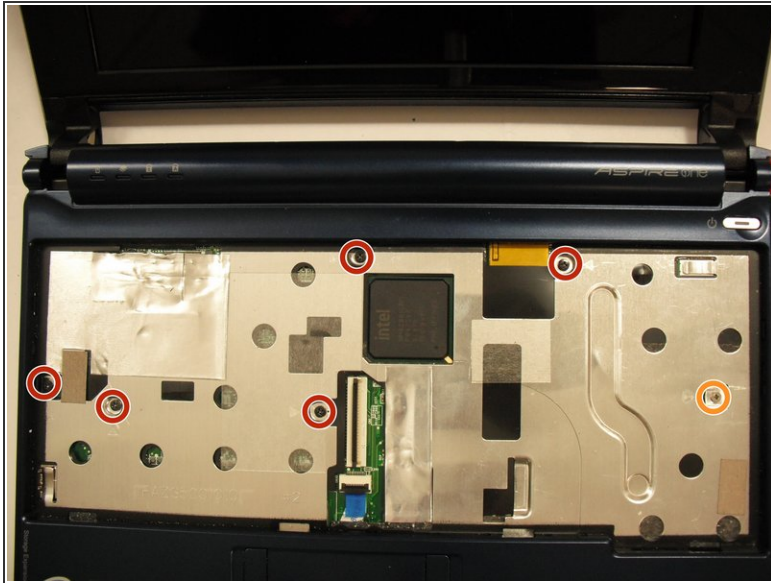
- Turn the netbook back over and open the display with the keyboard cavity facing you.

## Step 16



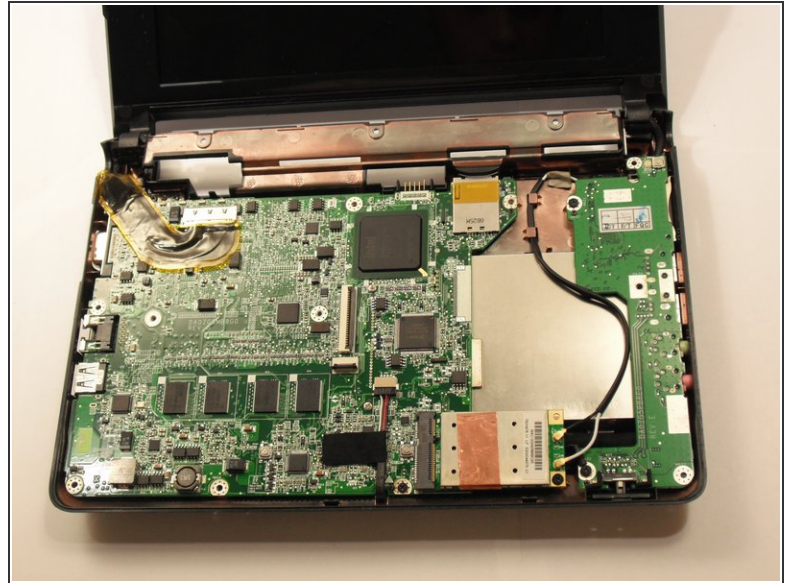
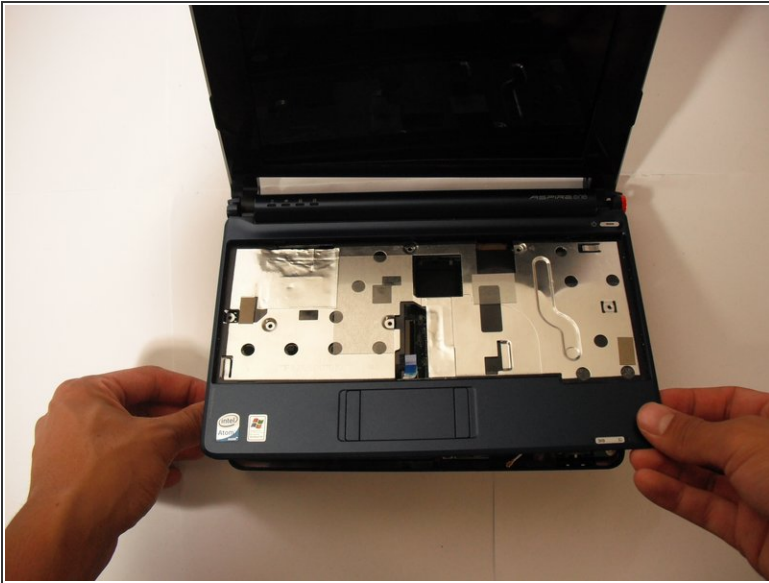
- Flip up the retaining flap on the trackpad ribbon cable ZIF connector.
- Using the blue tab, pull the trackpad ribbon cable from its socket on the motherboard.

## Step 17



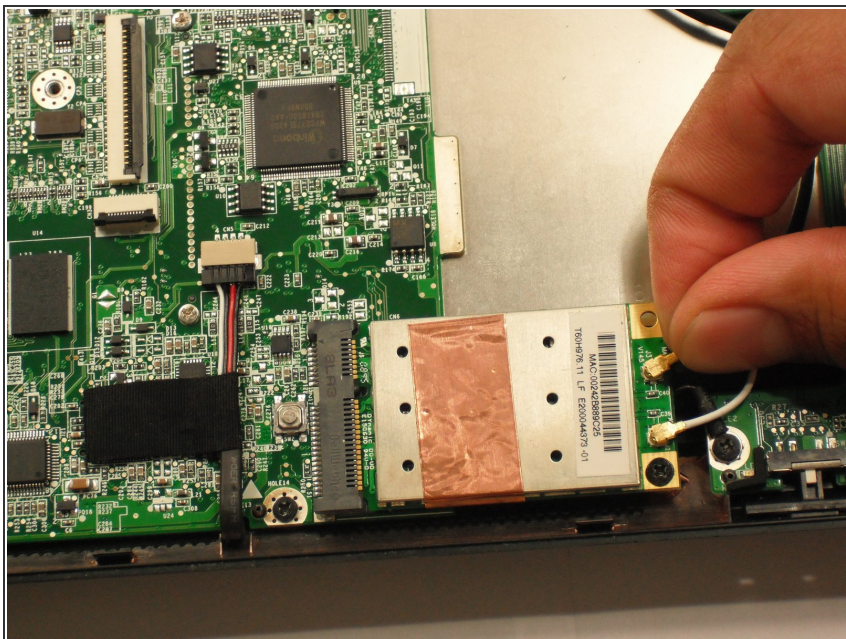
- Remove the five black 4.7 mm Phillips #0 screws from the metal casing.
- Remove the single silver 4.3 mm Phillips #00 screw from the right side of the metal casing.

## Step 18



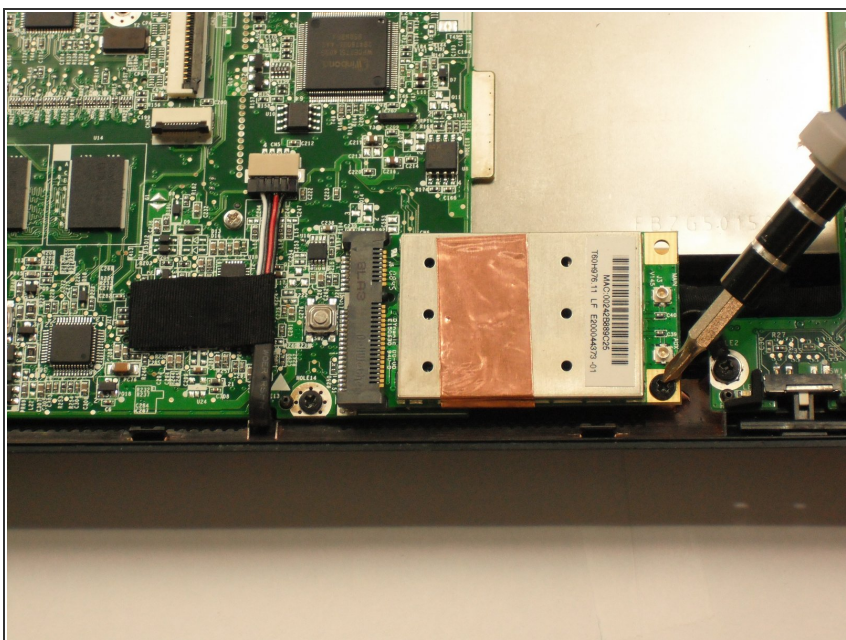
- Starting at the red rings along the hinge, insert a spudger or plastic opening tool into the seam between the two halves of the case.
- Slide the spudger toward the front of the device, releasing the small clips that hold down the top case.
- Gently lift off the top case.

## Step 19 — Internal Wireless Card



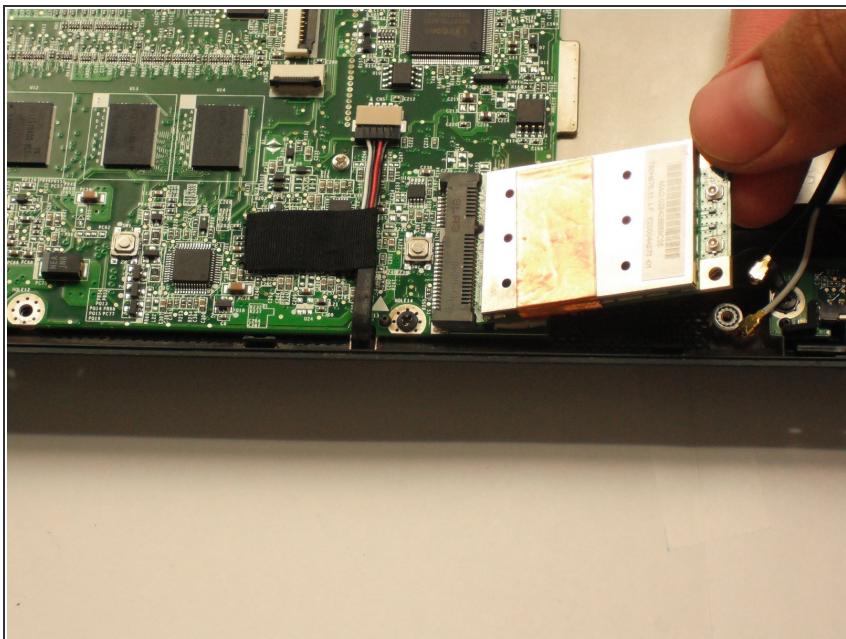
- Disconnect the two antenna cables from the right side of the wireless card.

## Step 20



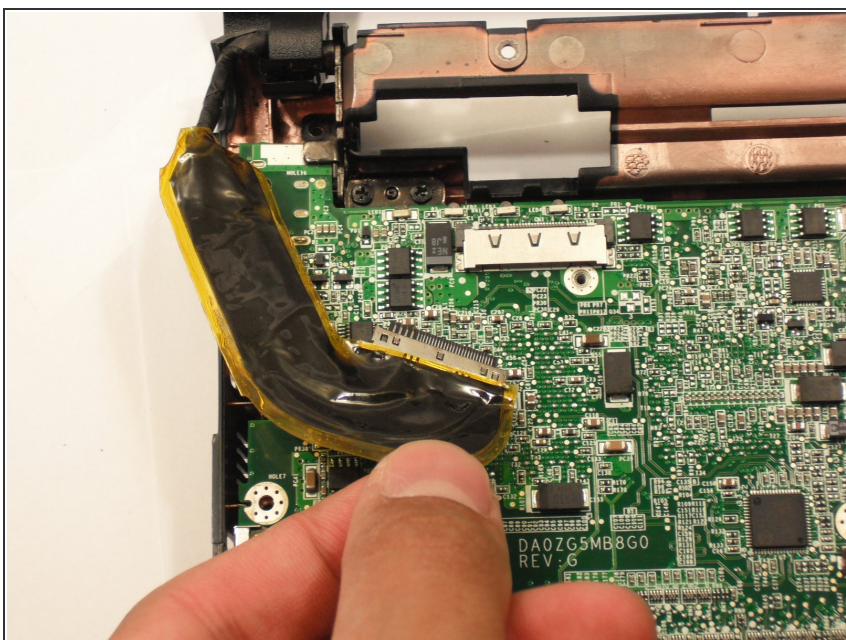
- Remove the single 3.9 mm Phillips #1 screw from the wireless card.

## Step 21



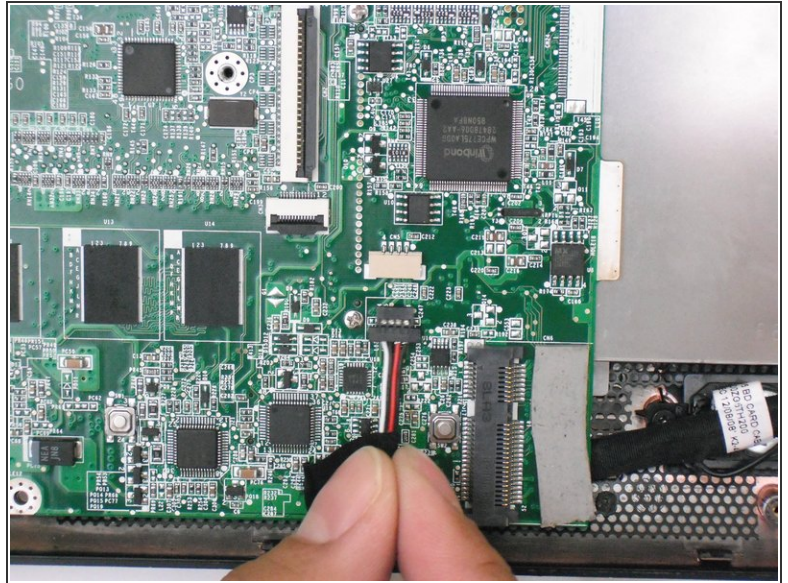
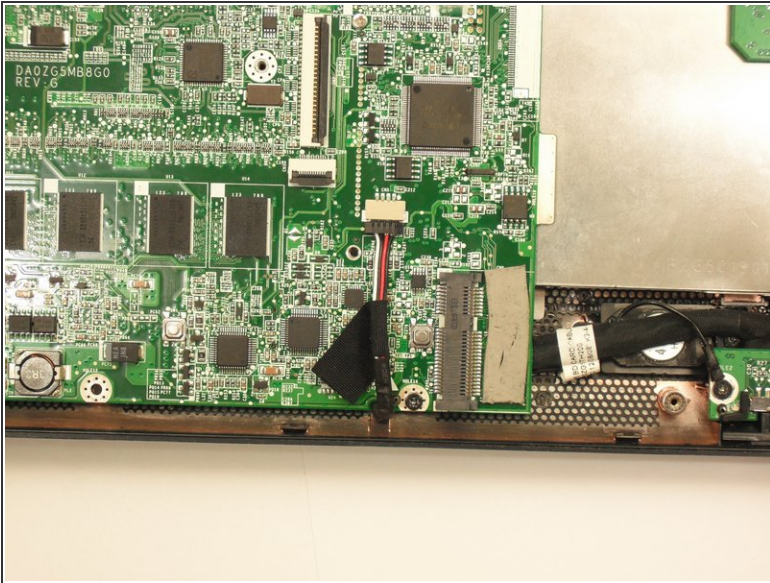
- Gently pull the wireless card to the right and slide it out of its socket.

## Step 22 — Motherboard



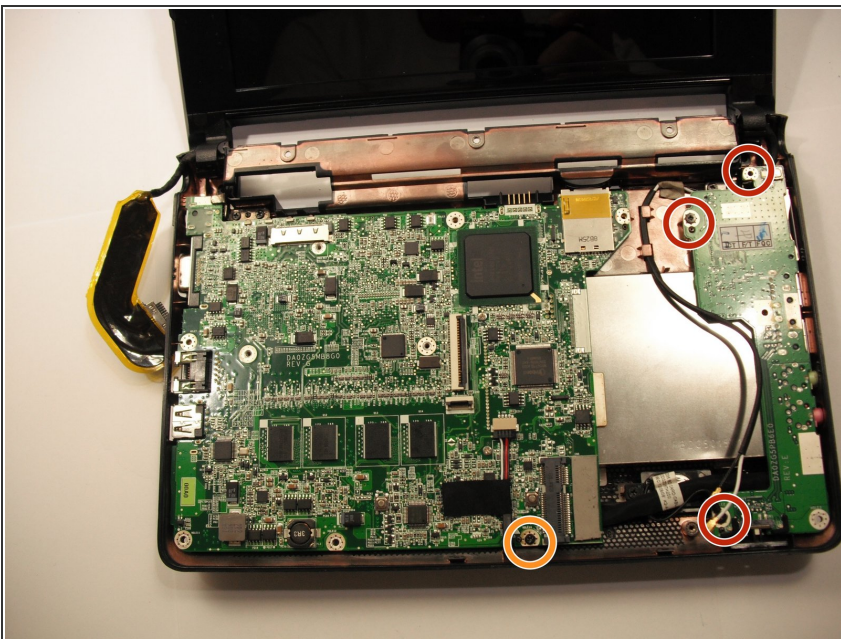
- Disconnect the display cable from the top left of the motherboard.

## Step 23



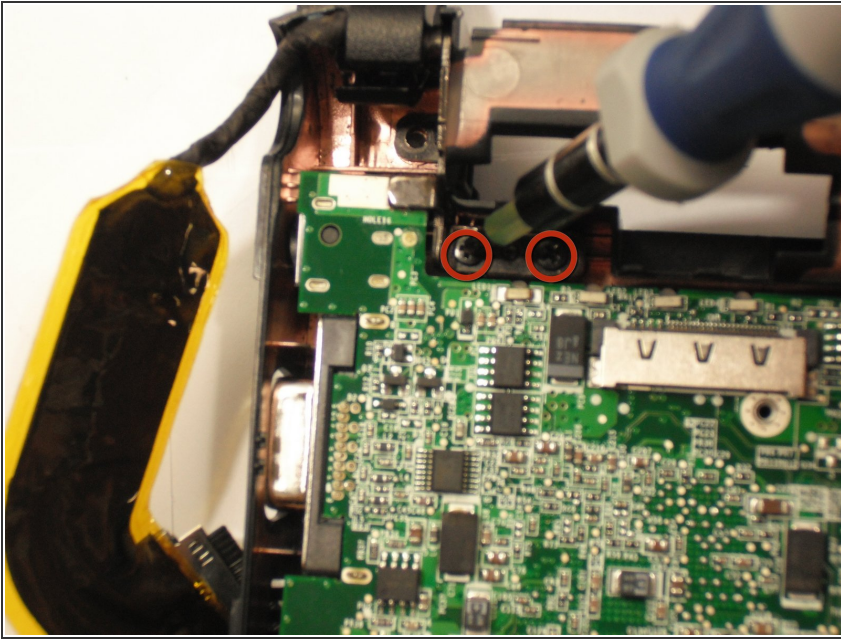
- Disconnect the speaker cable from its socket on the motherboard.

## Step 24



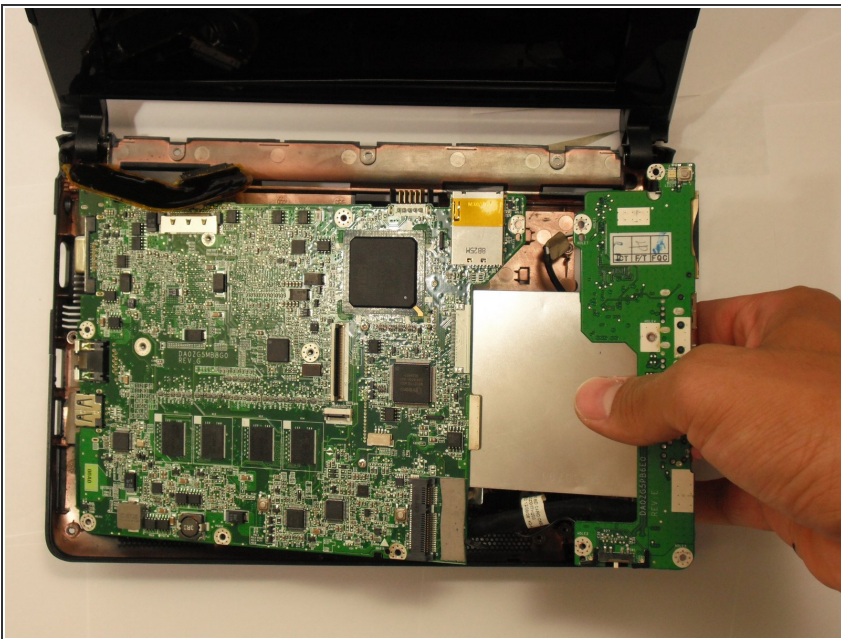
- Remove three 3.9 mm Phillips #1 screws from the small I/O board.
- Remove a single 3.9 mm Phillips #0 screw from the front of the motherboard.
- ⓘ Some laptops may instead have a single 4.7 mm Phillips #0 screw.

## Step 25



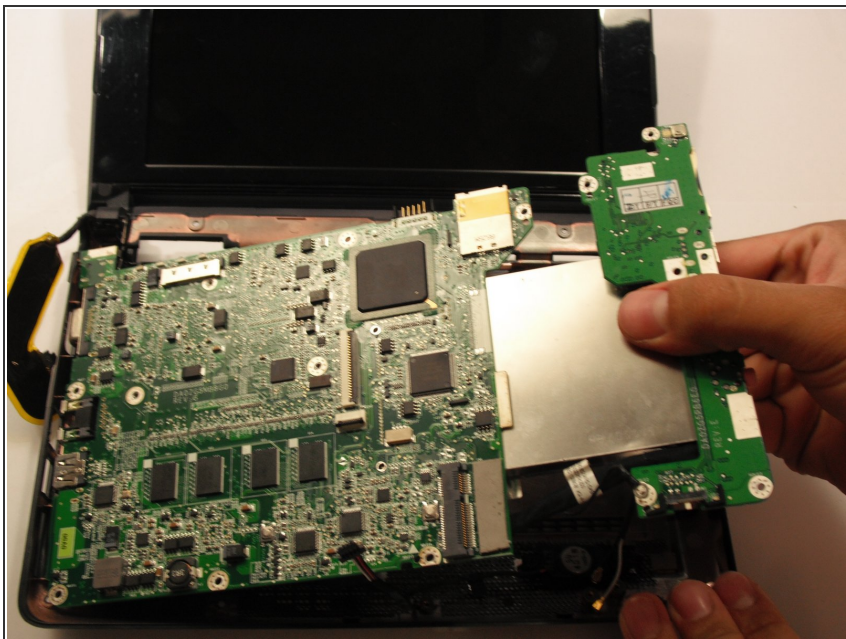
- Remove the two 4.7 mm Phillips #1 screws that connect the display to the motherboard.

## Step 26



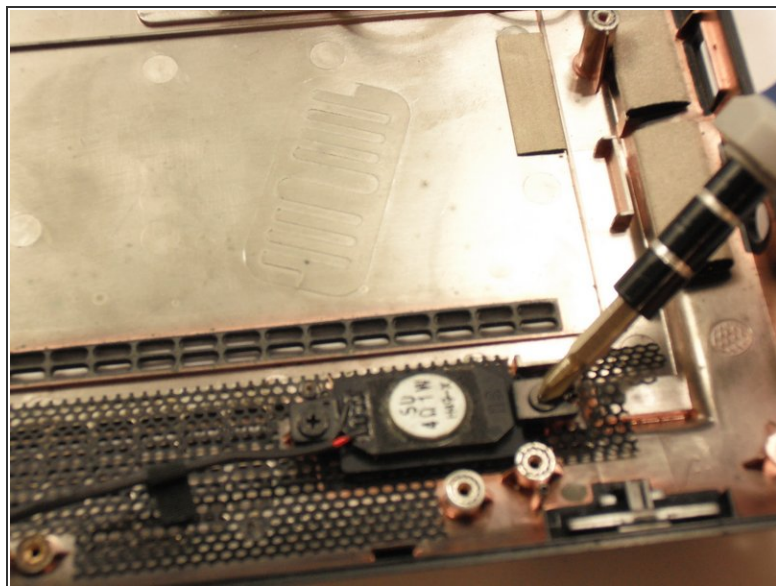
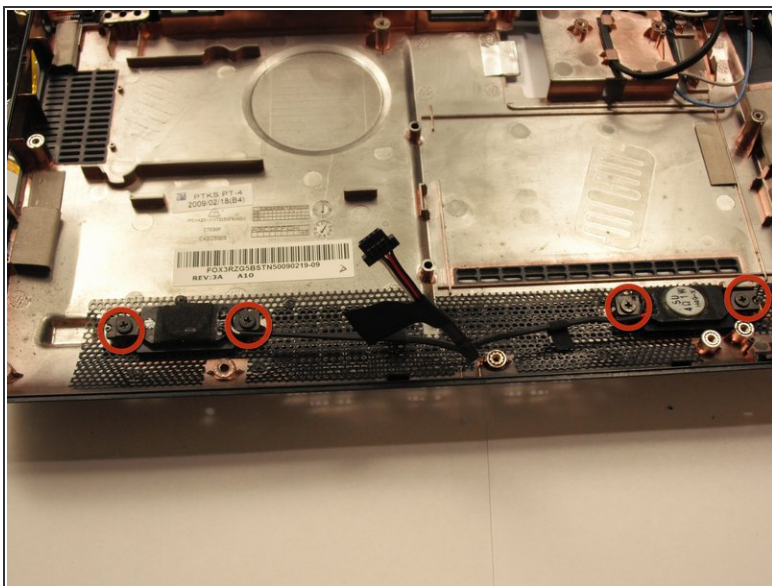
- Gently lift the I/O board up from the right side of the case.
- ⓘ The I/O board is attached to the motherboard by a short cable.

## Step 27



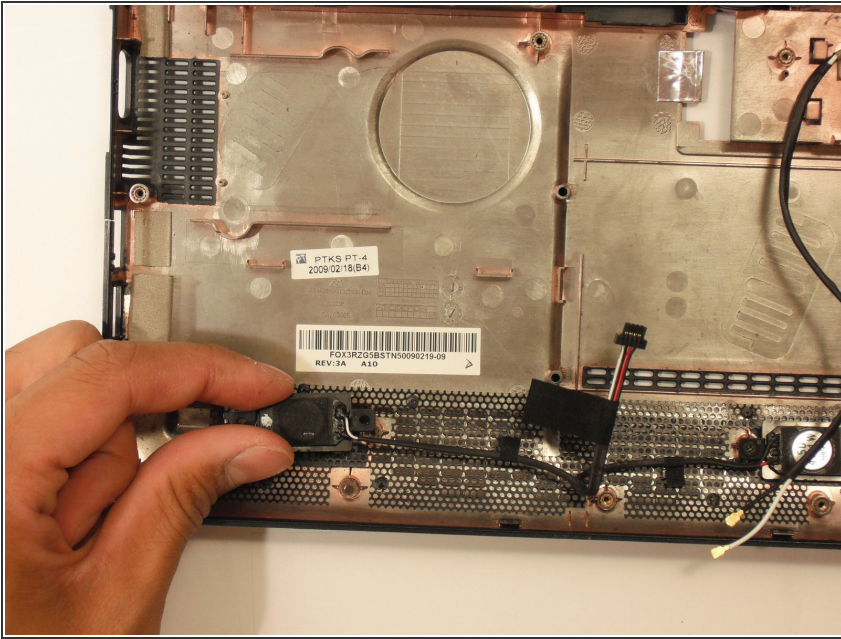
- Lift the entire motherboard assembly out the case.

## Step 28 — Speakers



- Remove the 4 3.9mm screws.

## Step 29



- Gently pull speakers away from case.

To reassemble your device, follow these instructions in reverse order.