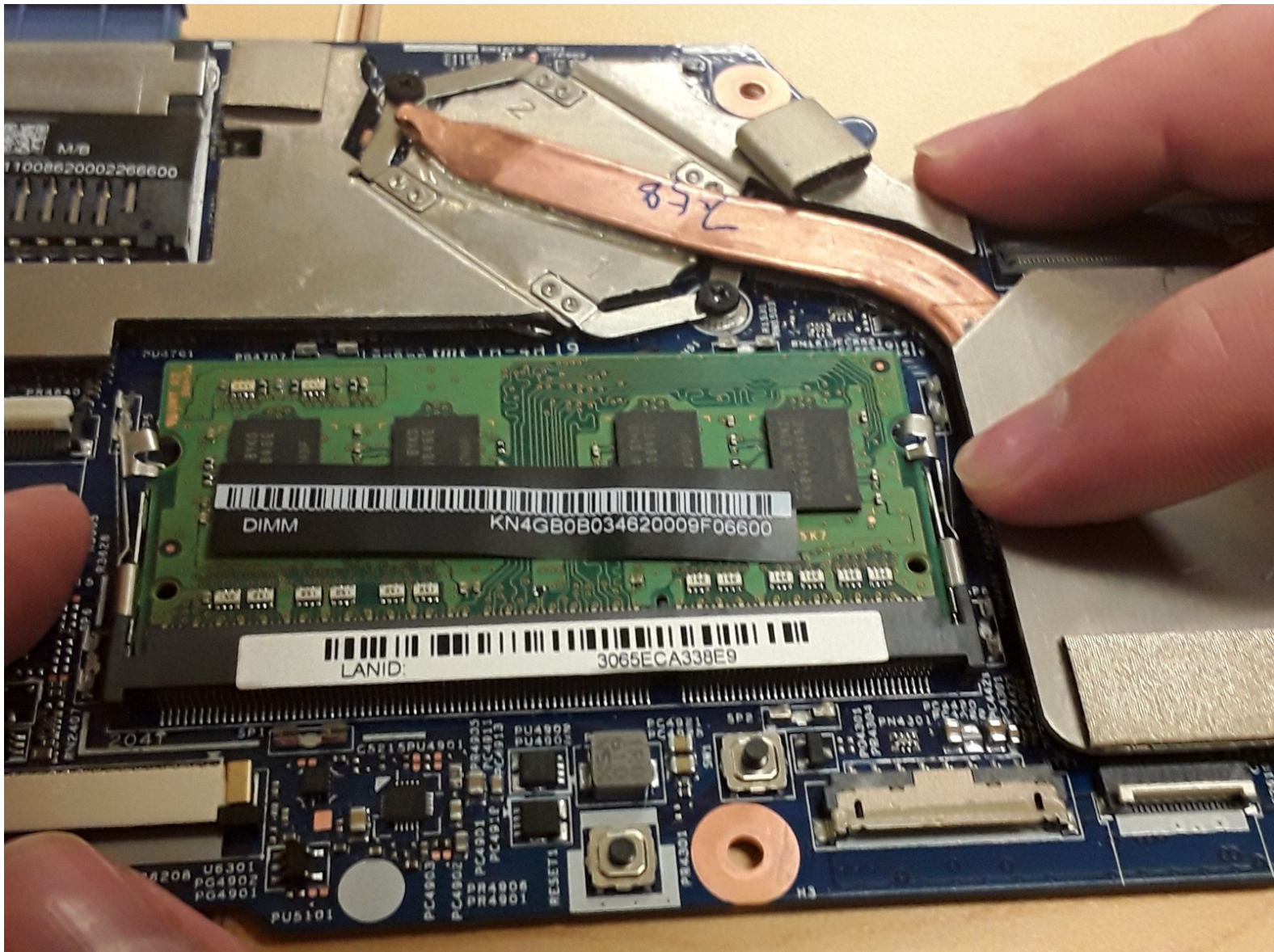




# Acer Aspire R11 R3-131T-C1Z5 RAM Replacement

This guide will give you step-by-step instructions on how to safely and successfully remove the RAM from your Acer Aspire R11 R3-131T-C1Z5.

Written By: Davyd Goff



---

## INTRODUCTION

This guide will give you step-by-step instructions on how to safely and successfully remove the RAM from your Acer Aspire R11 R3-131T-C1Z5.

---

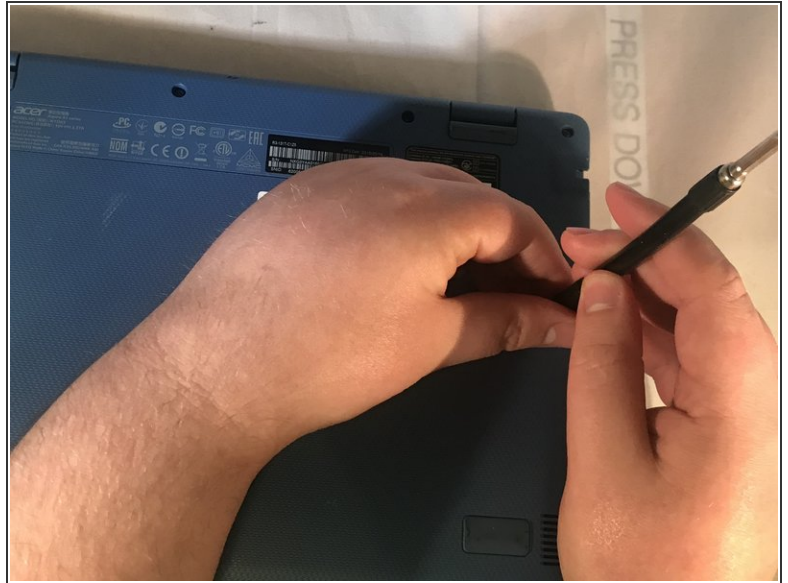
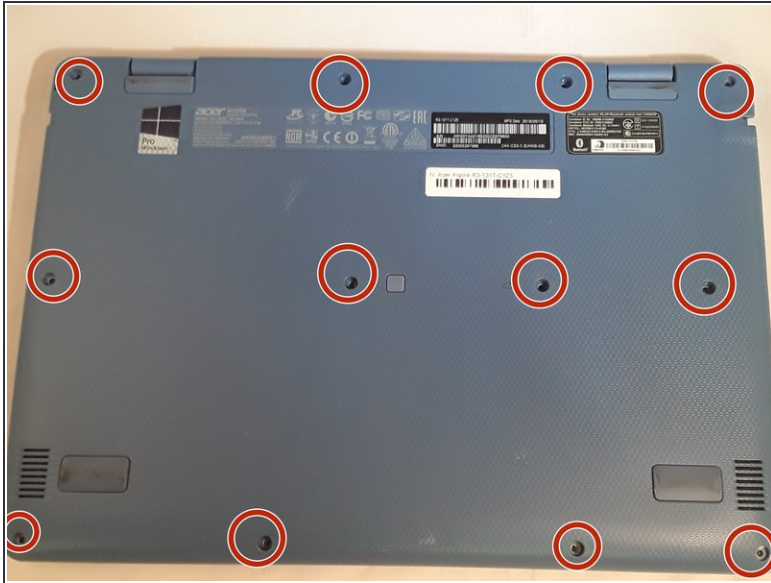


### TOOLS:

- [64 Bit Driver Kit](#) (1)
  - [Anti-Static Wrist Strap](#) (1)
  - [Phillips #0 Screwdriver](#) (1)
  - [Metal Spudger](#) (1)
-

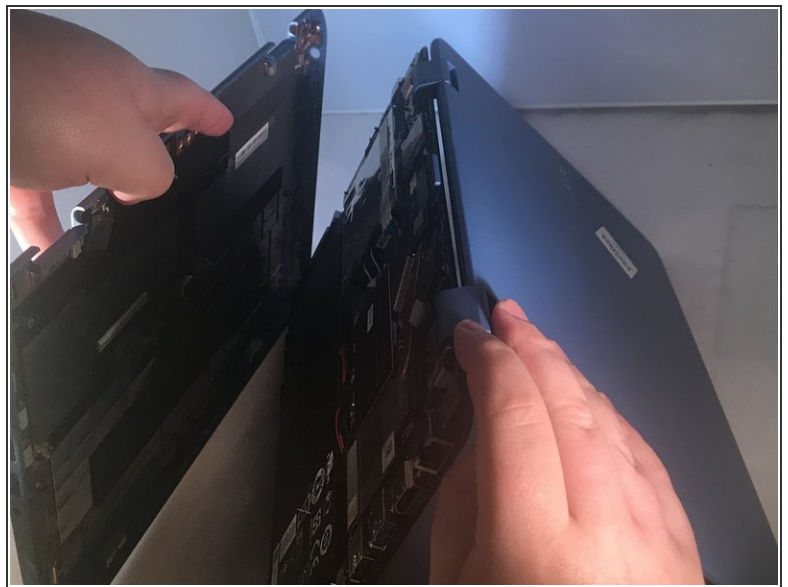


## Step 1 — Battery



- Flip the laptop on to its front, so that the back is facing up
- Unscrew the twelve 19.05 mm PH#0 screws.

## Step 2



- At the left front corner of the laptop, under the intel sticker, press the sharp end of a metal spudger between the keyboard and the back cover to pry it apart.

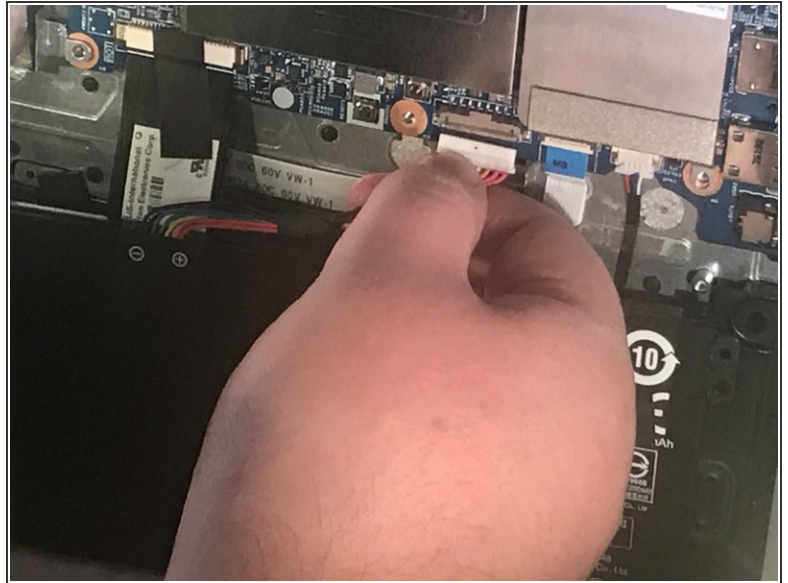
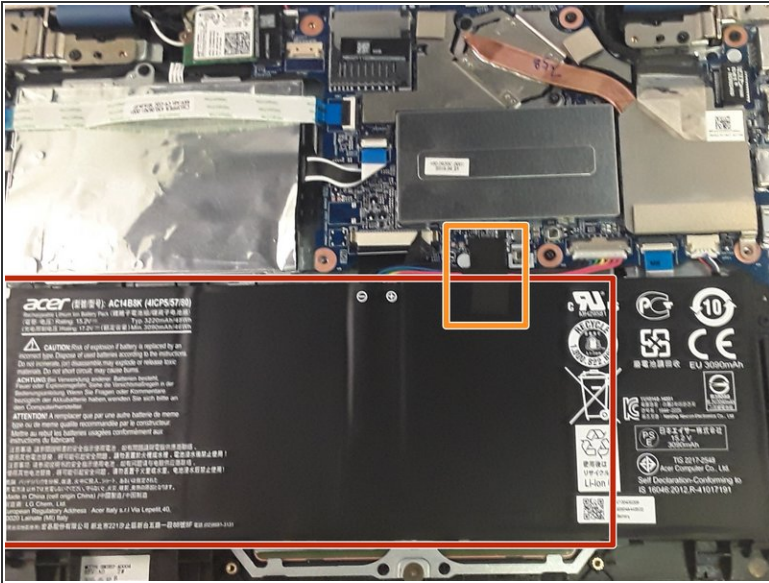
## Step 3



- Connect the clip of an anti-static wrist strap to any piece of metal on the computer.
- ⚠ It is important to ground yourself to avoid static.

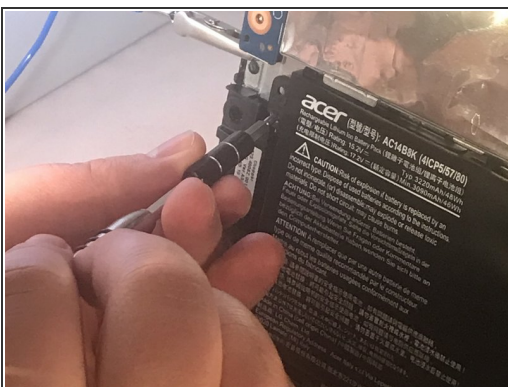


## Step 4



- Locate the large black rectangle at the bottom . This is your battery.
- ⚠ If you see that your battery is oozing or bulging, step away from the device.
- Remove the black electric tape that is on the rainbow colored cable at the top of the battery.
- Gently pull on the cable to disconnect.

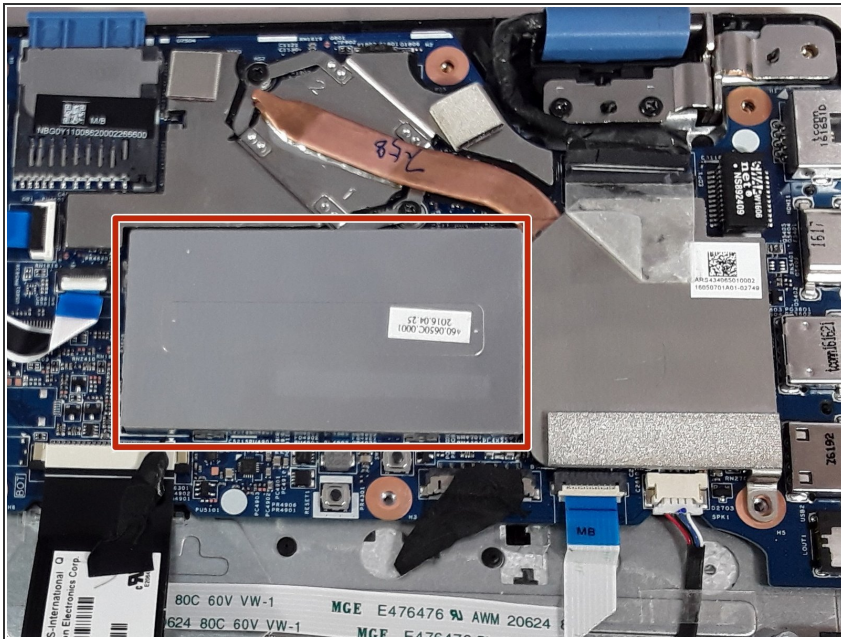
## Step 5



- Remove the two 12.7 mm PH#0 screws. One of these screws is located on the top of the left side of the battery and the other is located in the top of the right side of the battery.
- Remove the battery



## Step 6 — RAM



- Locate the large silver rectangle to the right of the hard drive. This is where your ram is located.

## Step 7



- Pull off the silver lid. Beneath, you will find a green circuit board. This is the RAM
- Gently push the clips away from either side of the RAM card.
- Remove the RAM

To reassemble your device, follow these instructions in reverse order.