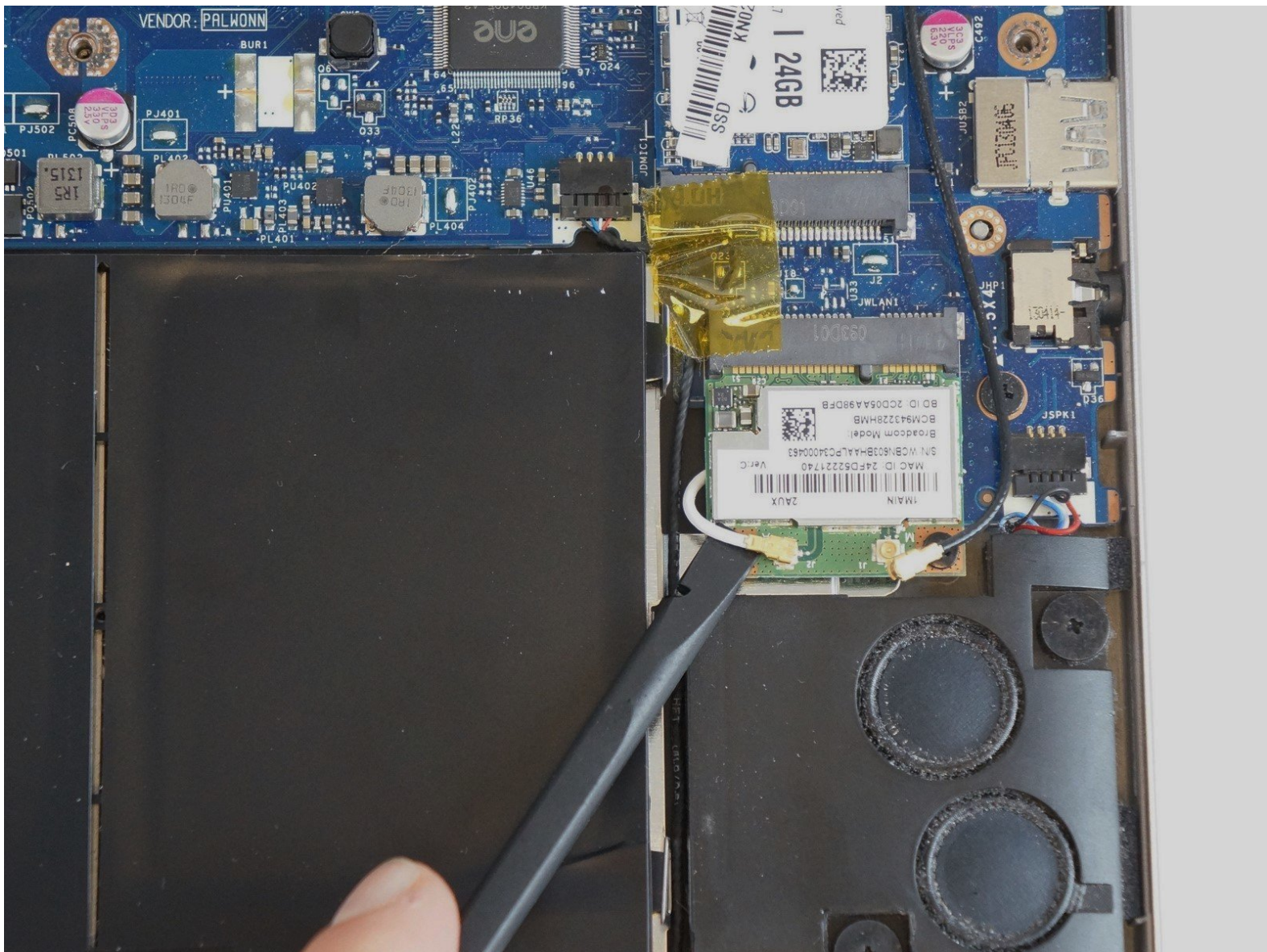




Acer Aspire R7 WiFi Card Replacement

The WiFi Card is a commonly replaced component on this model. It is easily accessible once the back cover is removed.

Written By: Andrew Rodiek





TOOLS:

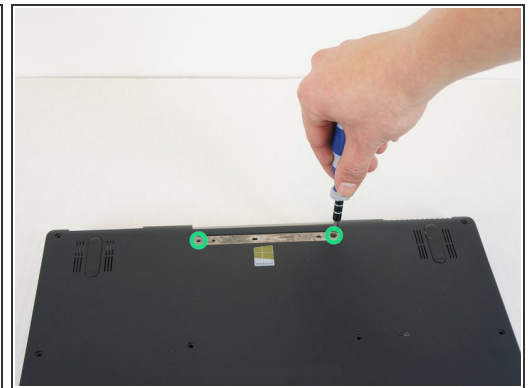
- [T7 Torx Screwdriver](#) (1)
 - [Spudger](#) (1)
 - [Phillips #00 Screwdriver](#) (1)
-

Step 1 — Cover



- Shut down the laptop and disconnect the power cord
- ⚠ Failing to disconnect or shut down the laptop could result in damage to the laptop or a shock hazard.
- Turn the laptop over

Step 2



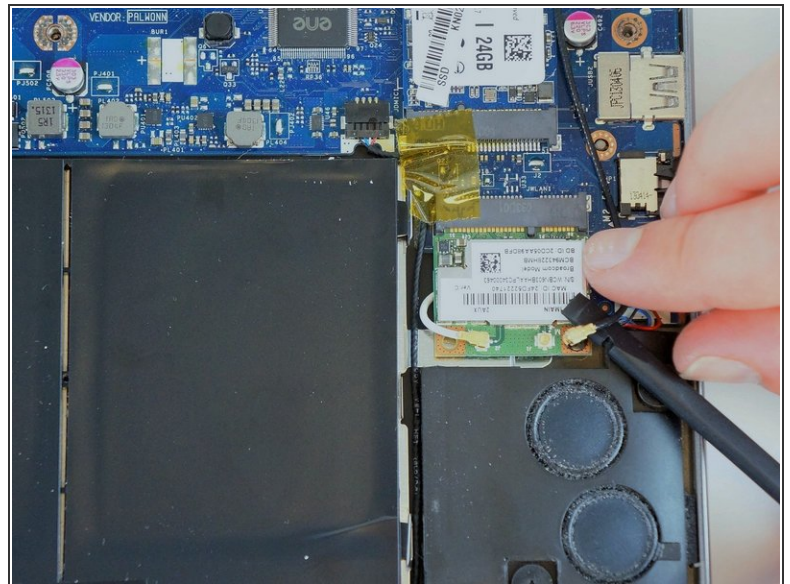
- Remove the (6) visible 10mm T-7 screws
- Remove the (4) visible 6mm T-7 screws
- Use the blue plastic opening tool to carefully remove the rubber pad which covers the two remaining screws
- Remove the remaining (2) 10mm T-7 screws

Step 3



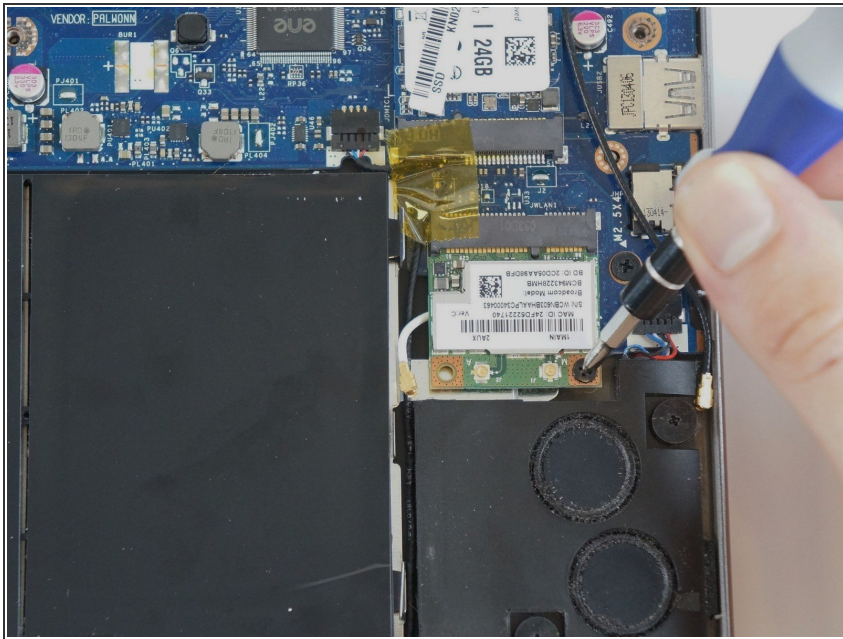
- Carefully lift the cover upwards
- ⓘ If the cover seems stuck use a spudger tool to pry the sides

Step 4 — WiFi Card



- Locate the WiFi Card antenna wires
- Remove both antenna wires from the WiFi card by prying upwards with the spudger tool

Step 5



- Remove the (1) 3.5mm #00 Phillips retaining screw
- ⓘ Once the screw is removed, the spring loaded hinge will tilt the WiFi card up

Step 6



- With the retaining screw removed, pull the WiFi card out of the socket

To reassemble your device, follow these instructions in reverse order.