



Acer Aspire R7-572-6423 WiFi Card Replacement

Replacement guide for the Aspire R7-572-6423 WiFi card.

Written By: Gavin Hill



INTRODUCTION

The WiFi card is internal, requiring some disassembly to access.




TOOLS:

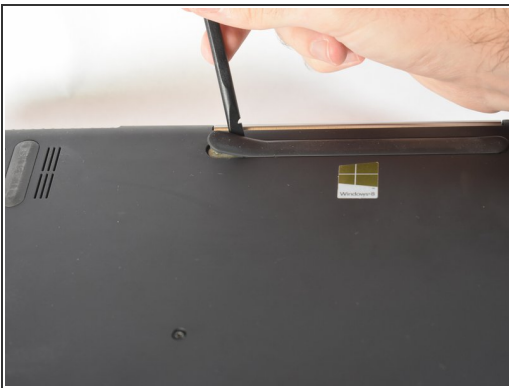
- [Spudger](#) (1)
 - [T9 Torx Screwdriver](#) (1)
 - [Phillips #0 Screwdriver](#) (1)
-

Step 1 — WiFi Card



 Turn off the laptop and disconnect the power adapter before attempting this guide. Failure to do so can result in a shock hazard.

Step 2



- Remove the top and middle grips that conceal 3 additional screws.
- Remove the 5 6mm T9 screws.
- Remove the 8 10mm T9 screws.

Step 3



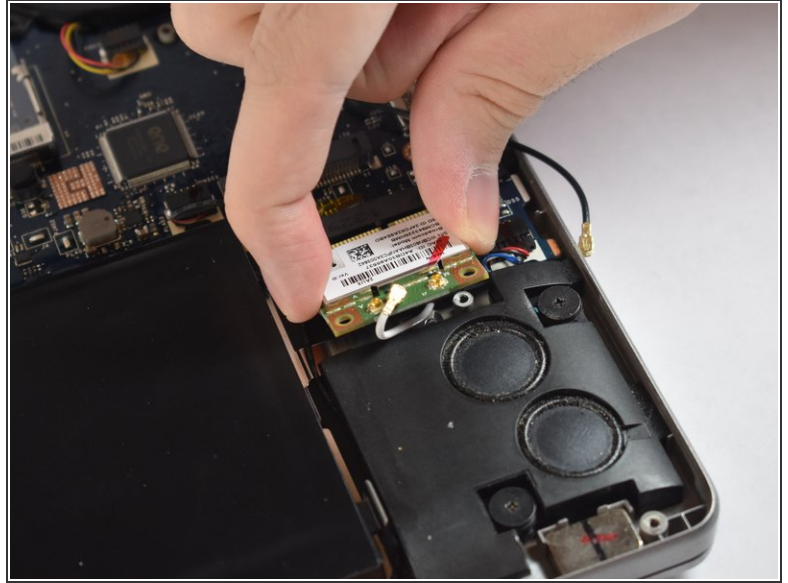
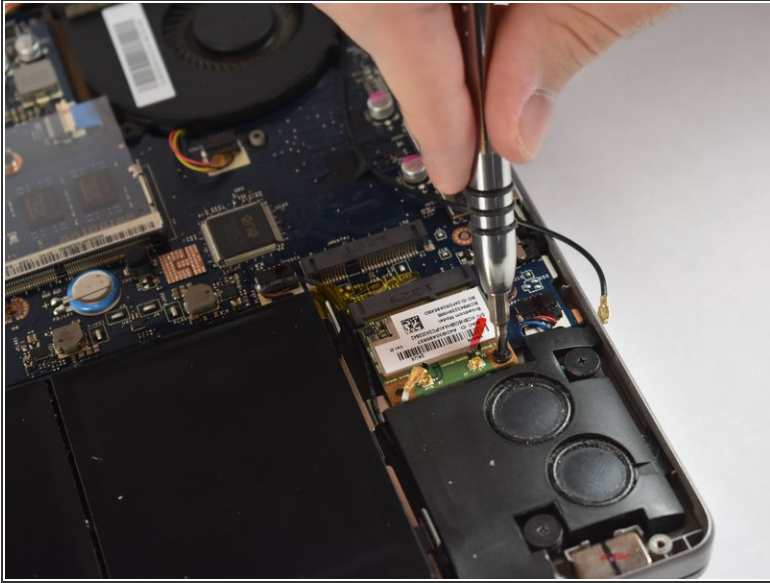
- Remove back panel.

Step 4



- Disconnect the wires connecting the card to the motherboard.

Step 5



- Unscrew the 3mm #00 Phillips screw.
- Remove the WiFi card from the motherboard.

To reassemble your device, follow these instructions in reverse order.