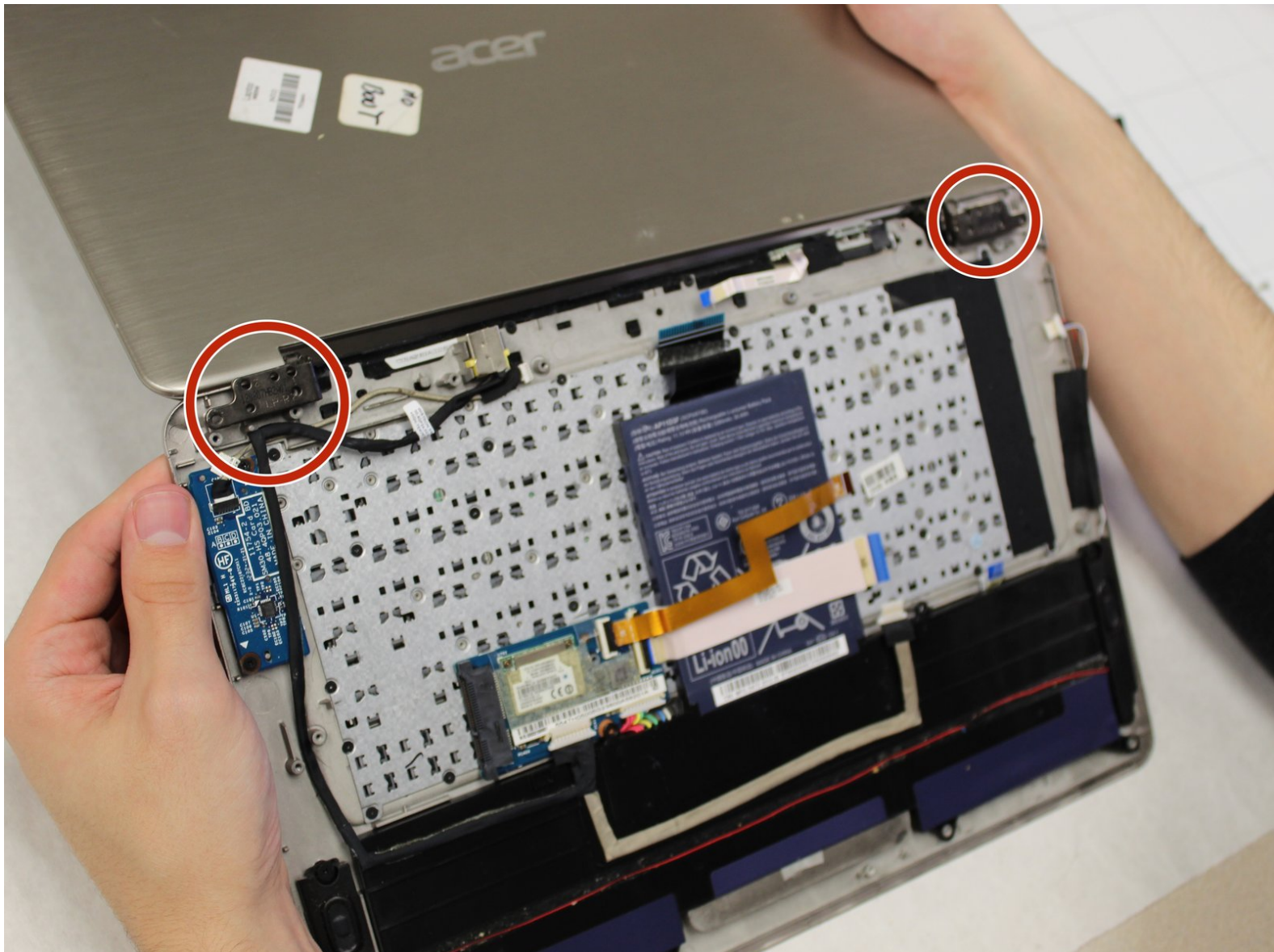




# Acer Aspire S3 MS2346 Display Assembly Replacement

Replacement guide for the display assembly of Acer Aspire S3 MS2346 laptop.

Written By: Nikolas I Steckley



# INTRODUCTION

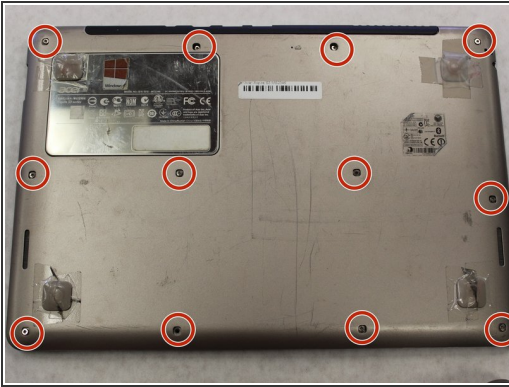
This guide will walk you through disconnecting the display assembly. You may need to remove the display assembly if it is damaged and needs repair, or simply for cleaning.



## TOOLS:

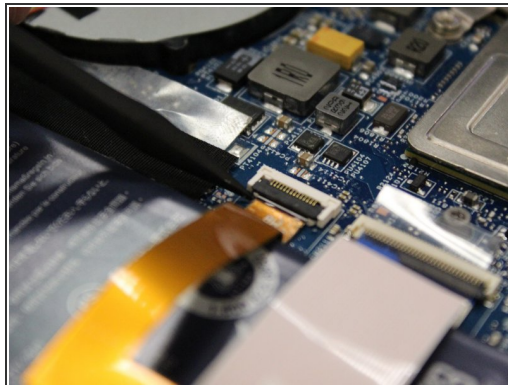
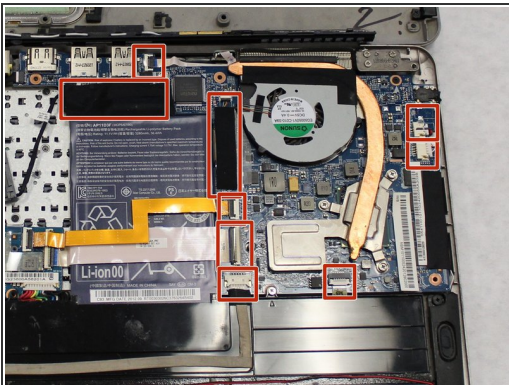
- [Spudger](#) (1)
  - [Phillips #0 Screwdriver](#) (1)
  - [iFixit Opening Tools](#) (1)
  - [Phillips #00 Screwdriver](#) (1)
-

## Step 1 — Back Cover



- Remove the 12 5mm Phillips #00 screws.
- Use a plastic opening tool to gently pry open the back panel.
- Gently lift up the back panel, exposing the internals of the laptop.

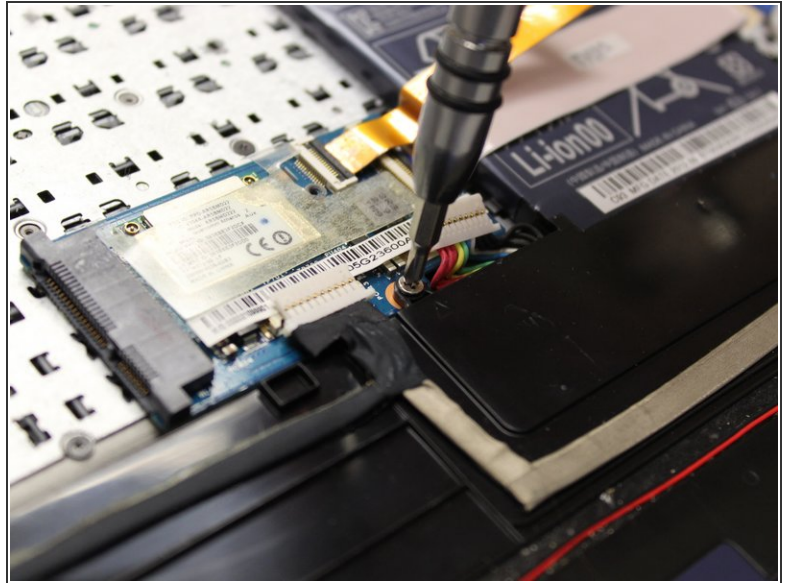
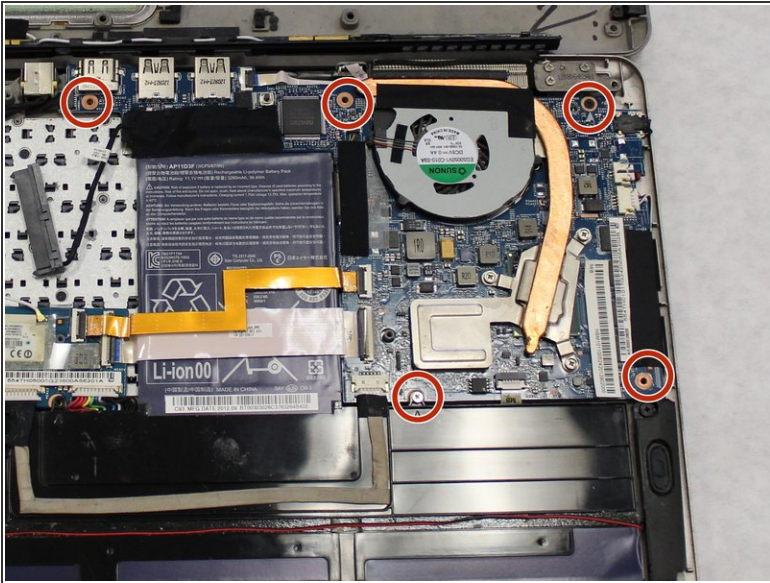
## Step 2 — Motherboard



- Remove the motherboard connector cables by gently lifting the black latch that clamps them in place with a spudger or simply pull the connector from the port.

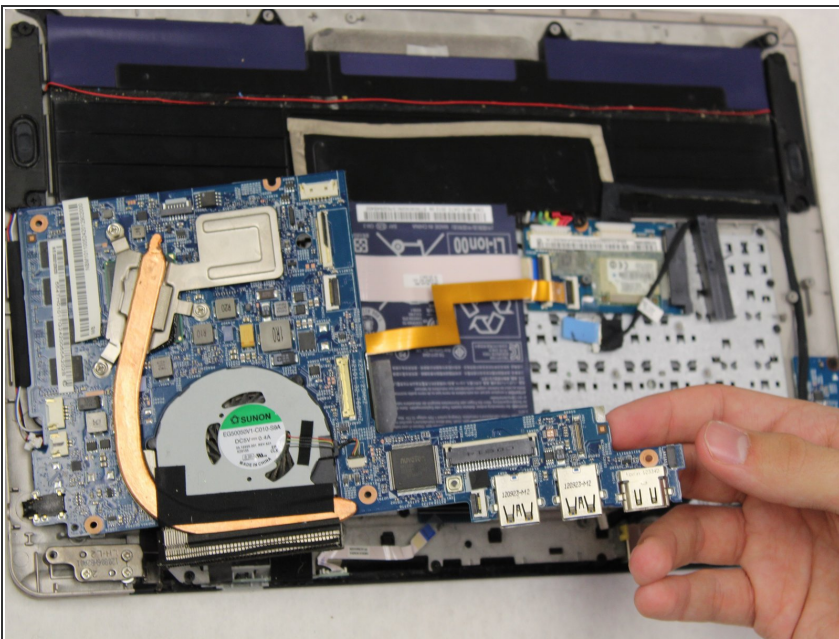


## Step 3



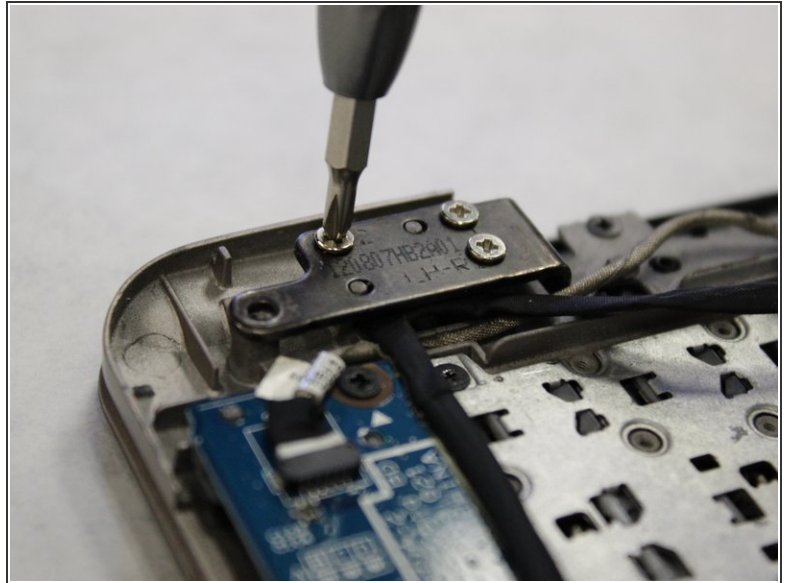
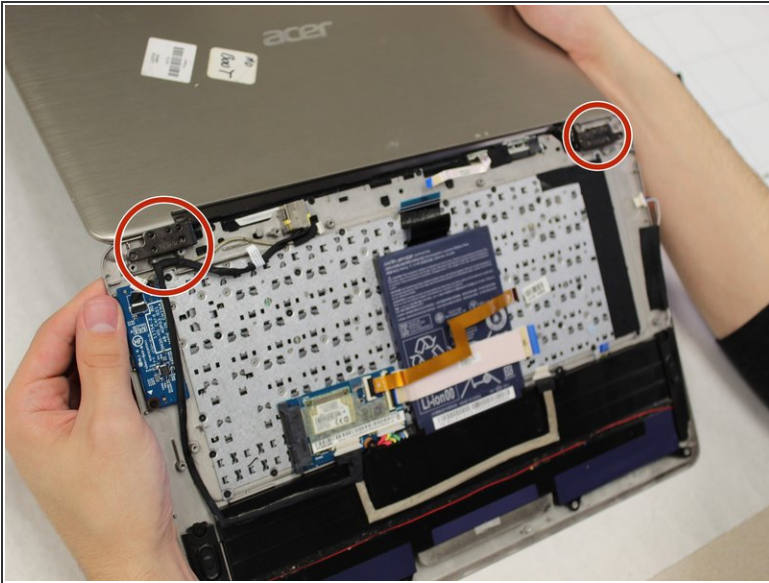
- Remove the 5 5mm PH0 screws holding the motherboard in place.
- Gently remove the motherboard from the chassis.

## Step 4



- Gently remove the motherboard.

## Step 5 — Display Assembly



- Unscrew the 10 5mm PH00 screws from the hinges attaching the display assembly to the base.

## Step 6



- Unlatch the screen from the frame

To reassemble your device, follow these instructions in reverse order.