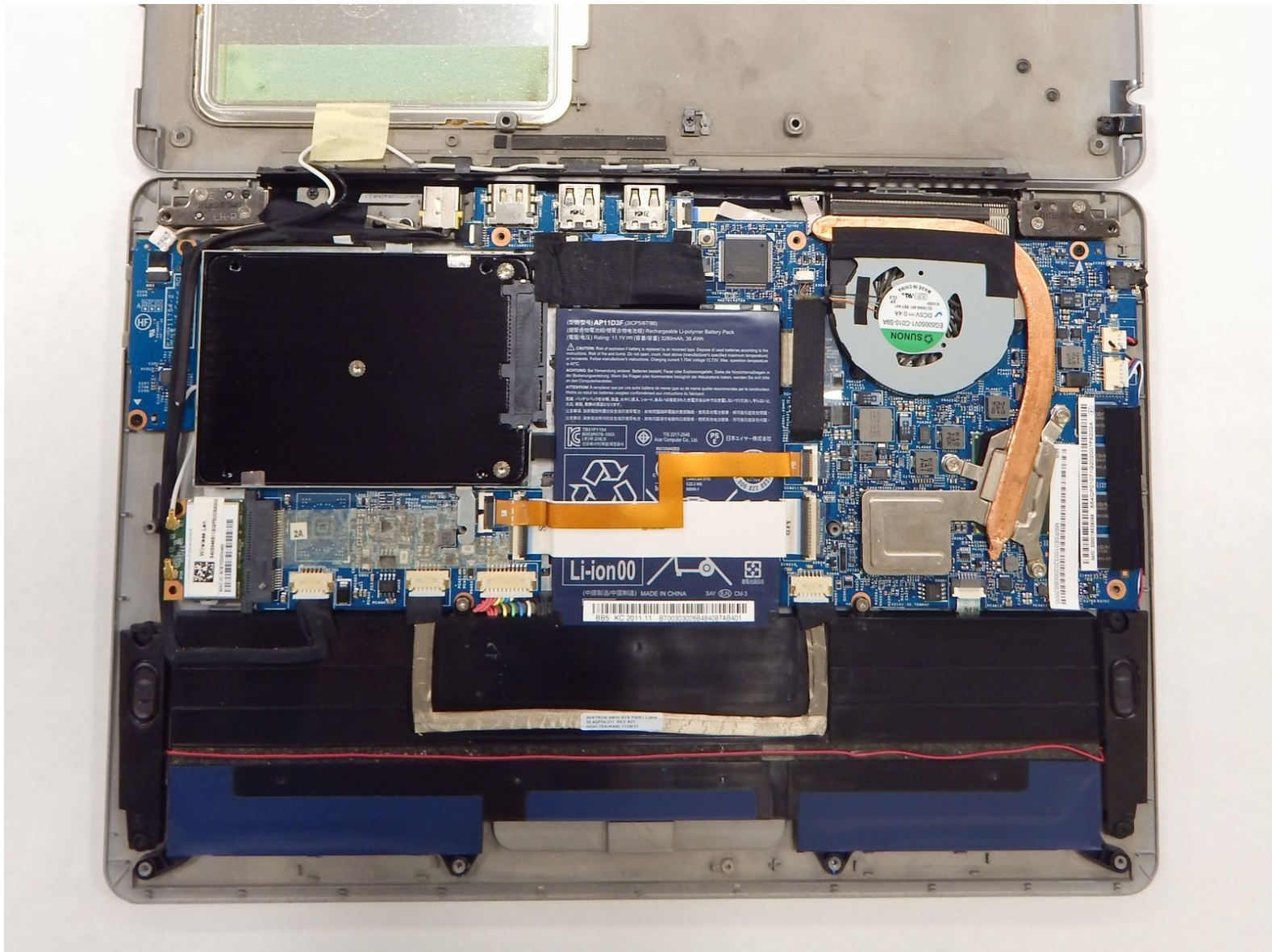




Acer Aspire S3-951-6432 Battery Replacement

How to remove and replace the Acer Aspire S3-951-6432's battery that is not working.

Written By: Cynthia Bennett



INTRODUCTION

The battery is what allows the computer to turn on without being plugged into the wall. If your laptop does not turn on or does not stay on for very long when it is unplugged, then the battery may need to be replaced. The goal of this guide is to show how to remove and replace a faulty battery. It is also a pre-requisite guide for other guides that require you to open up your laptop. The battery is the largest internal piece of the laptop, and is easy to locate when the device is opened up. For this guide, a plastic opening tool and a Phillips #0 screwdriver will be utilized. The steps for replacing the battery involve removing several screws and cables and will take approximately fifteen to twenty minutes to complete.

Removing the battery should likely be the first step before removing or replacing any other part of the laptop. By removing the battery first, electric discharge and damage to internal components can be avoided.

TOOLS:

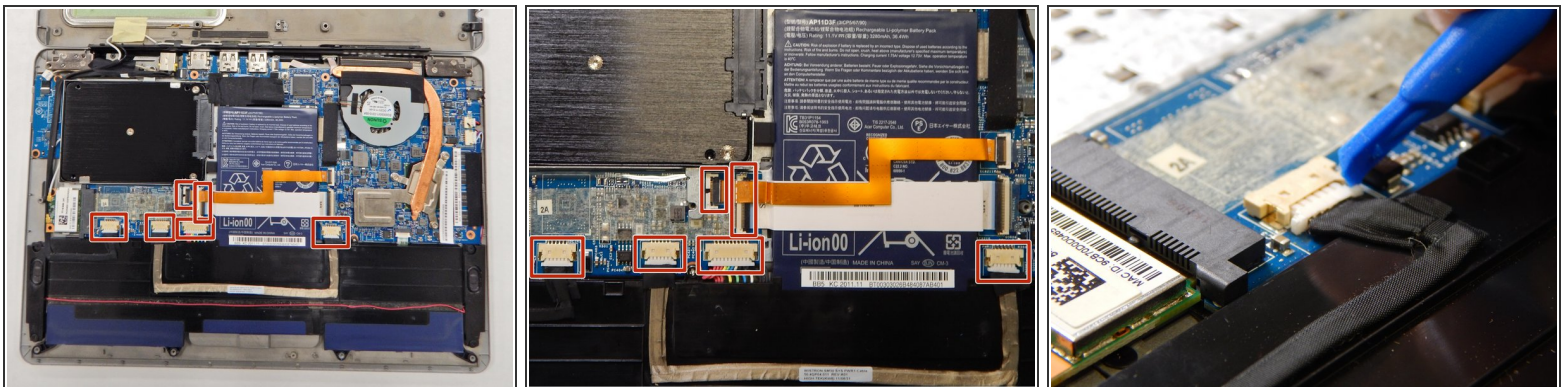
- [Phillips #0 Screwdriver](#) (1)
 - [iFixit Opening Tools](#) (1)
-

Step 1 — Battery



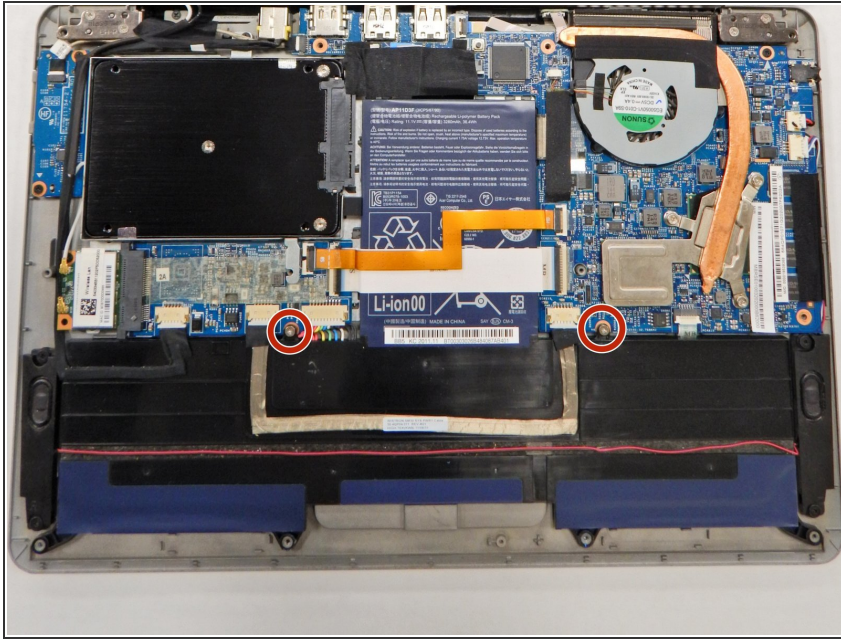
- Keeping it closed, turn the laptop upside down.
 - With the Phillips #0 screwdriver, remove the twelve 5 mm screws that hold the laptop together.
 - Insert the plastic opening tool between the plastic casings to pull the bottom lid of the laptop up.
- i** You do not need to pull the lid all the way off.

Step 2



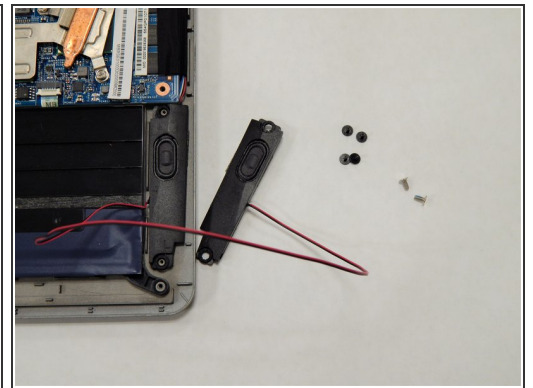
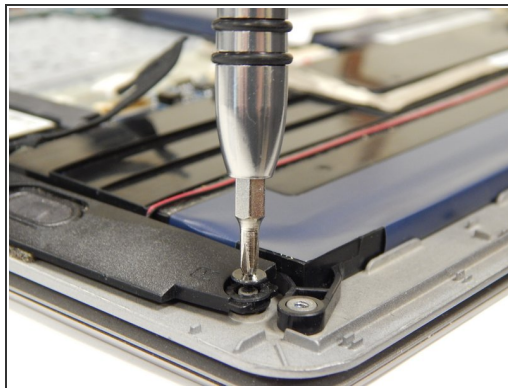
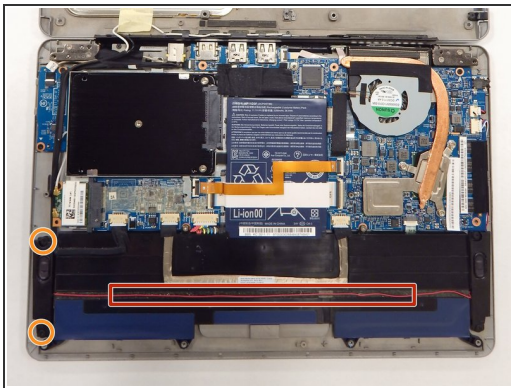
- Locate the six cables that are connected to the motherboard. The cable with the white strip is located underneath the cable with the orange strip.
 - Using the plastic opening tool on one side and your fingernail on the other, wedge each cable out of its socket.
- i** The battery is now disconnected. If you want to remove the battery, follow the remaining steps in this guide. However, if you only wish to disconnect the battery to do other internal work, skip the remaining steps in this guide and continue on to other guides.

Step 3



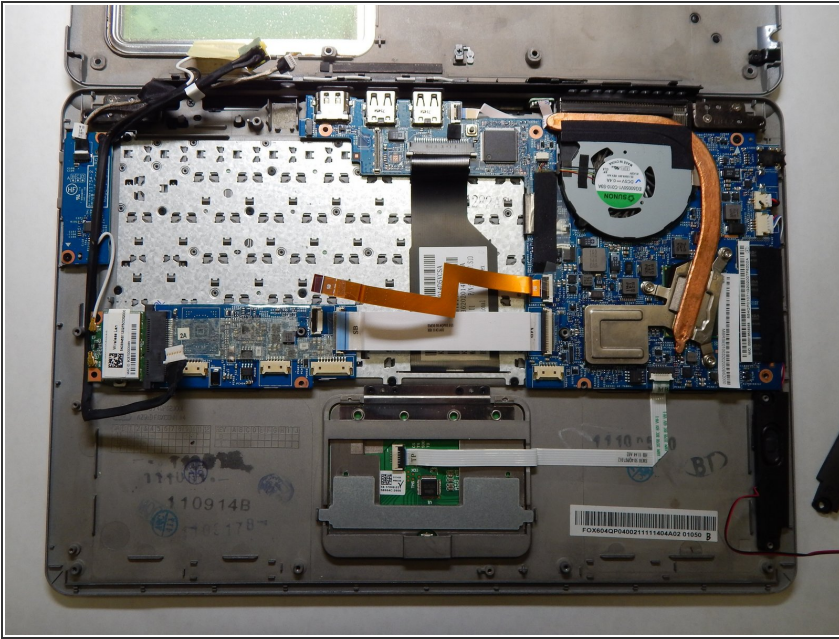
- With the Phillips #0 screwdriver, remove the two 5 mm screws that are located above the long black piece of the battery.

Step 4



- Locate the two speakers for this laptop that are connected above the battery by a thin red cord.
- Using the Phillips #0 screwdriver, remove the two 3 mm screws holding the left speaker in place.
- Pull the left speaker up along with the red cord and leave it off to the right side.
- ⓘ If you plan to disassemble the laptop down to the motherboard, you will also need to remove the two 3 mm screws holding the right-side speaker in place with a Phillips #0 screwdriver.

Step 5



- Without bending it, lift the entire battery (both the long black piece and the rectangular blue piece) straight up. Place it off to one side.

To reassemble your device, follow these instructions in reverse order.