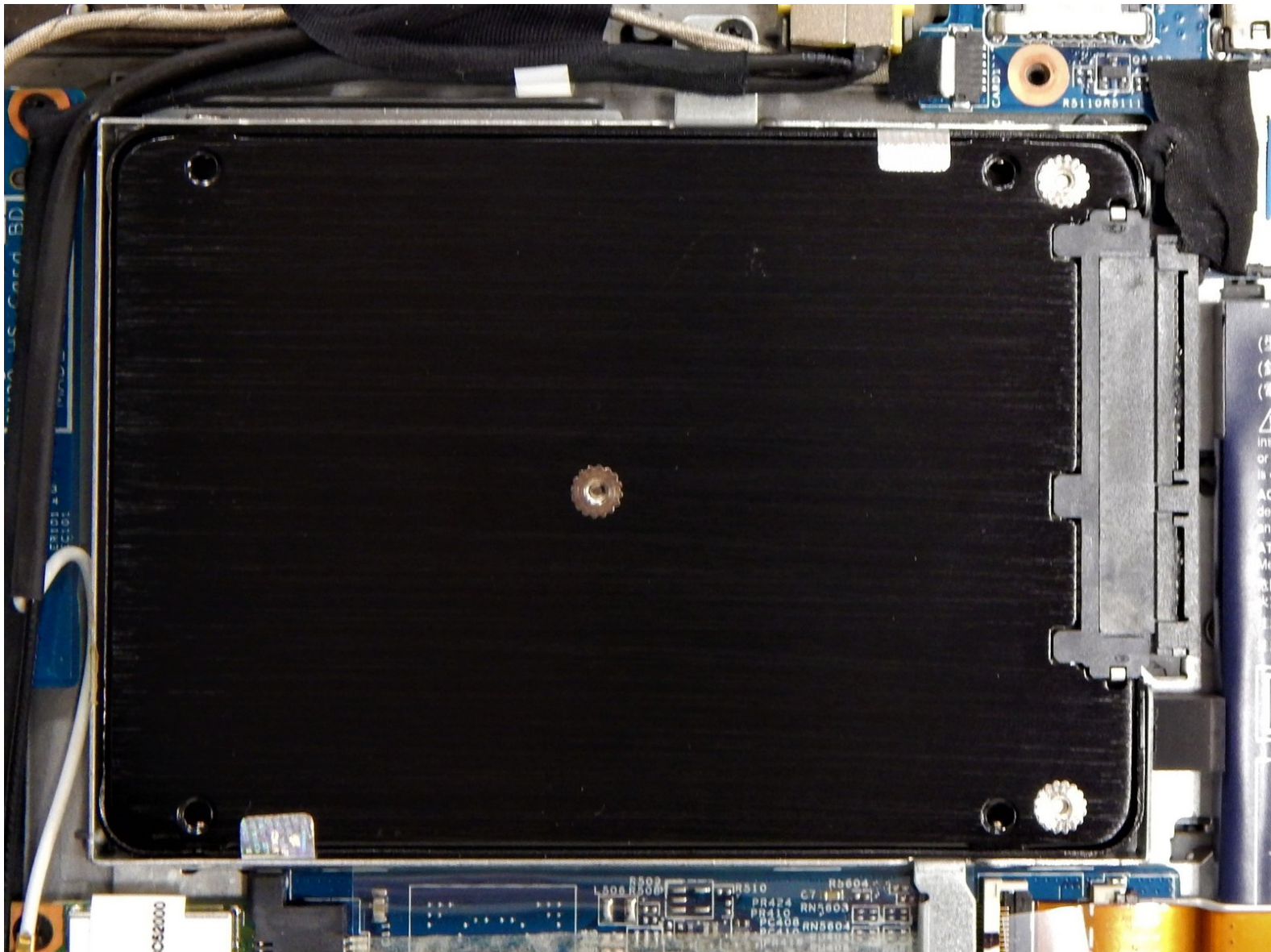




Acer Aspire S3-951-6432 Hard Drive (HDD/SDD) Replacement

How to remove and replace the Acer Aspire S3-951-6432's hard drive that is not working.

Written By: Cynthia Bennett



INTRODUCTION

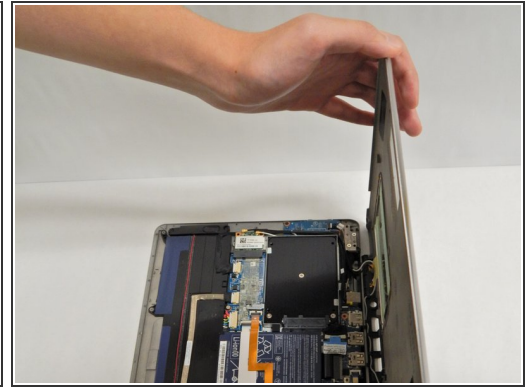
The hard drive (or HDD/SDD) functions as the laptop's primary storage device. Hard drives have a limited 'life span'. If the data on your laptop has become corrupted or if your laptop has problems reading data, then your hard drive is either damaged or dying and will need to be replaced. The goal of this guide is to show how to replace a dead or dying hard drive (or upgrade to a better one). The hard drive is only connected to the computer by a few screws, and is relatively easy to remove and replace. For this guide, a spudger and a Phillips #0 screwdriver will be needed. The steps required for this guide will only take a few minutes to complete.



TOOLS:

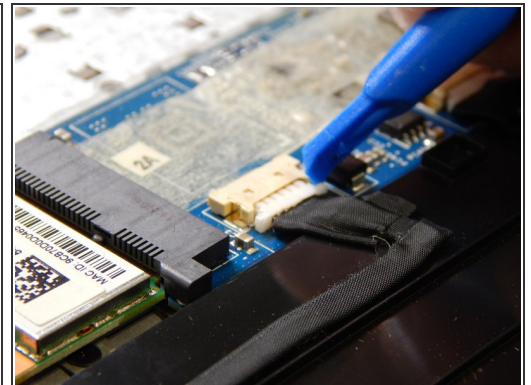
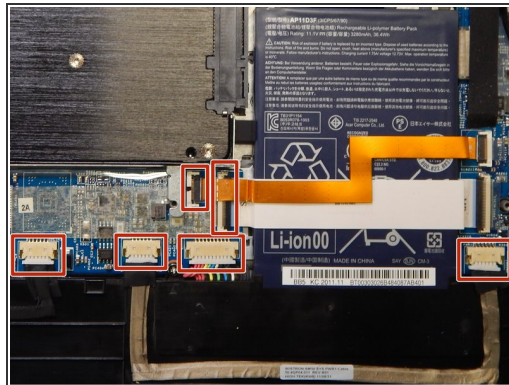
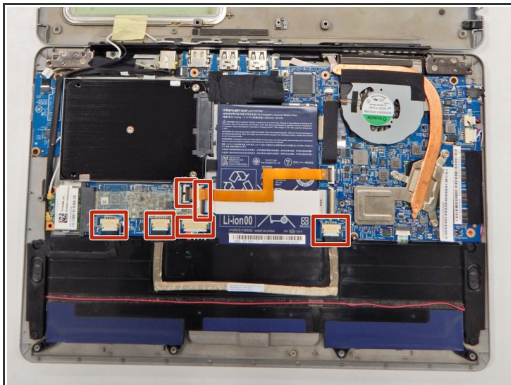
- [iFixit Opening Tools](#) (1)
 - [Spudger](#) (1)
 - [Phillips #0 Screwdriver](#) (1)
-

Step 1 — Battery



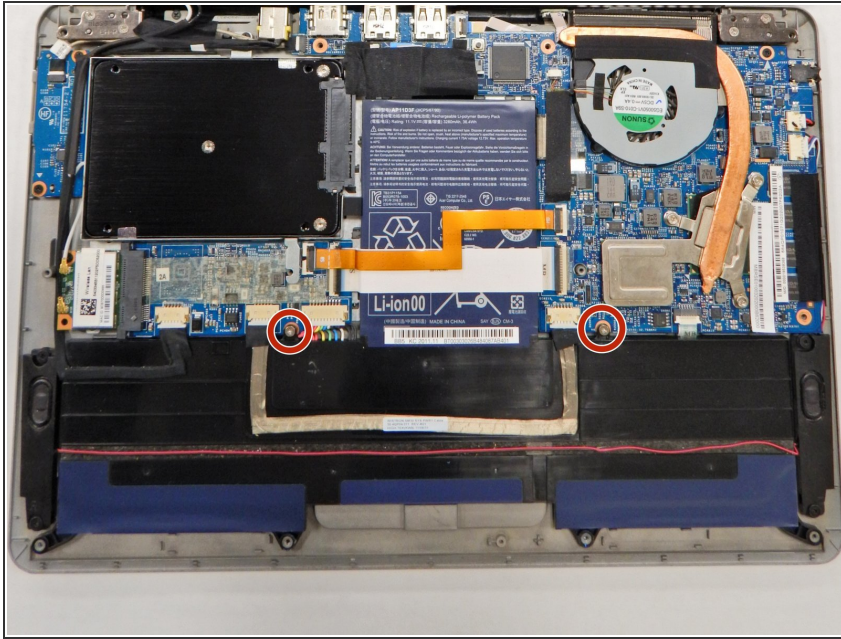
- Keeping it closed, turn the laptop upside down.
- With the Phillips #0 screwdriver, remove the twelve 5 mm screws that hold the laptop together.
- Insert the plastic opening tool between the plastic casings to pull the bottom lid of the laptop up.
- ⓘ You do not need to pull the lid all the way off.

Step 2



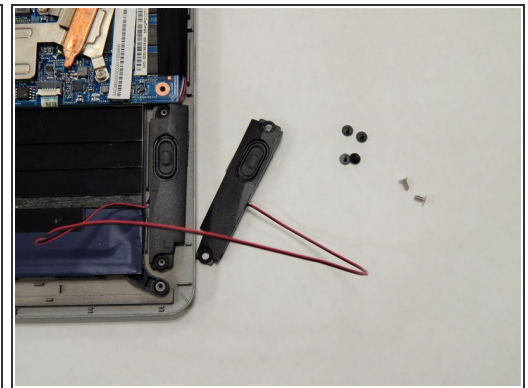
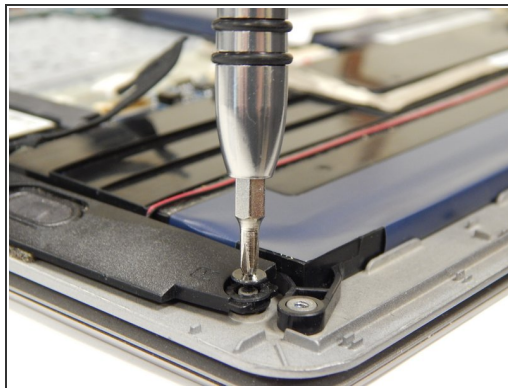
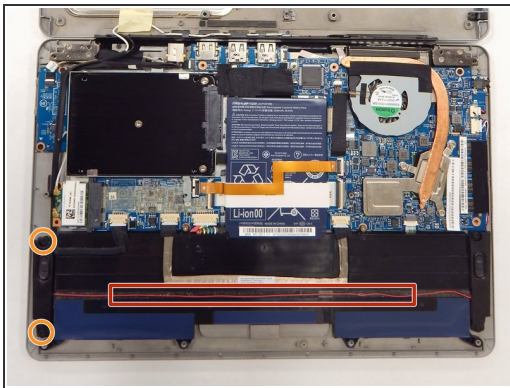
- Locate the six cables that are connected to the motherboard. The cable with the white strip is located underneath the cable with the orange strip.
- Using the plastic opening tool on one side and your fingernail on the other, wedge each cable out of its socket.
- ⓘ The battery is now disconnected. If you want to remove the battery, follow the remaining steps in this guide. However, if you only wish to disconnect the battery to do other internal work, skip the remaining steps in this guide and continue on to other guides.

Step 3



- With the Phillips #0 screwdriver, remove the two 5 mm screws that are located above the long black piece of the battery.

Step 4



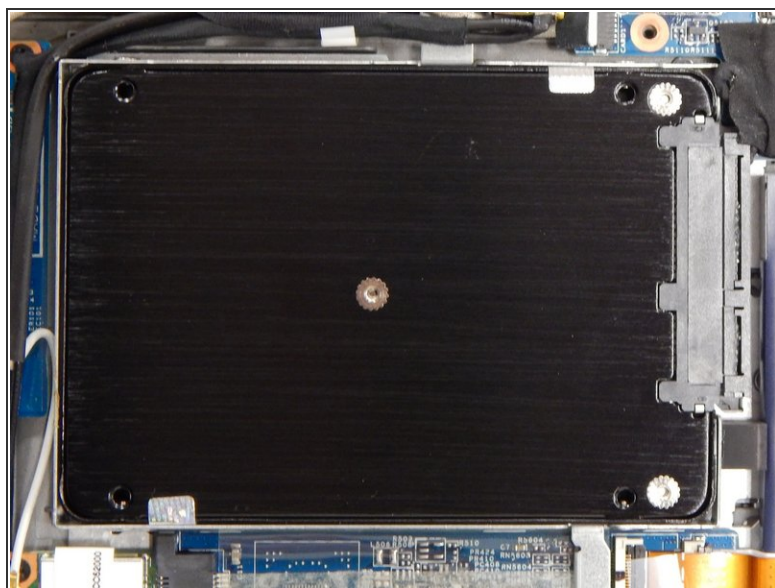
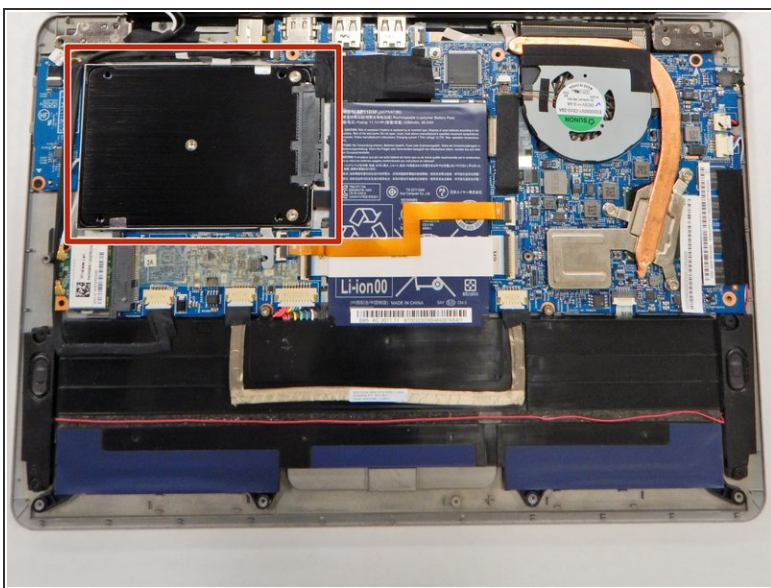
- Locate the two speakers for this laptop that are connected above the battery by a thin red cord.
- Using the Phillips #0 screwdriver, remove the two 3 mm screws holding the left speaker in place.
- Pull the left speaker up along with the red cord and leave it off to the right side.
- ⓘ If you plan to disassemble the laptop down to the motherboard, you will also need to remove the two 3 mm screws holding the right-side speaker in place with a Phillips #0 screwdriver.

Step 5



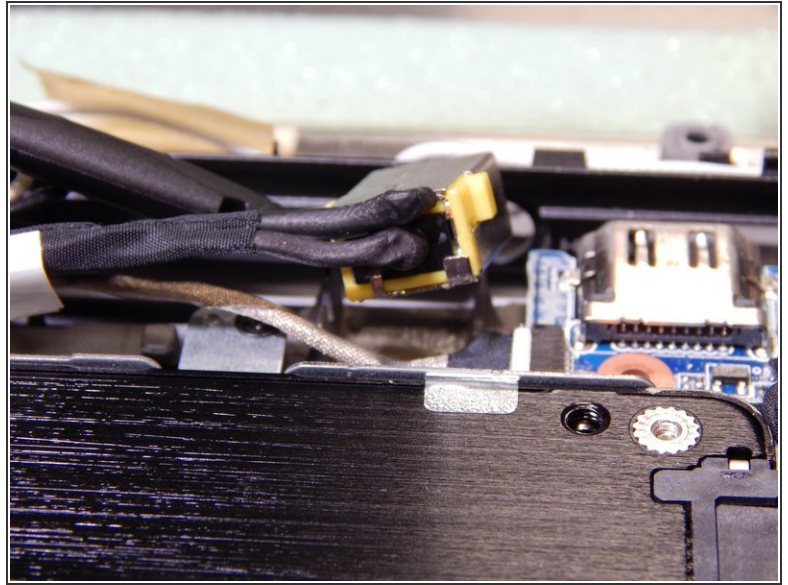
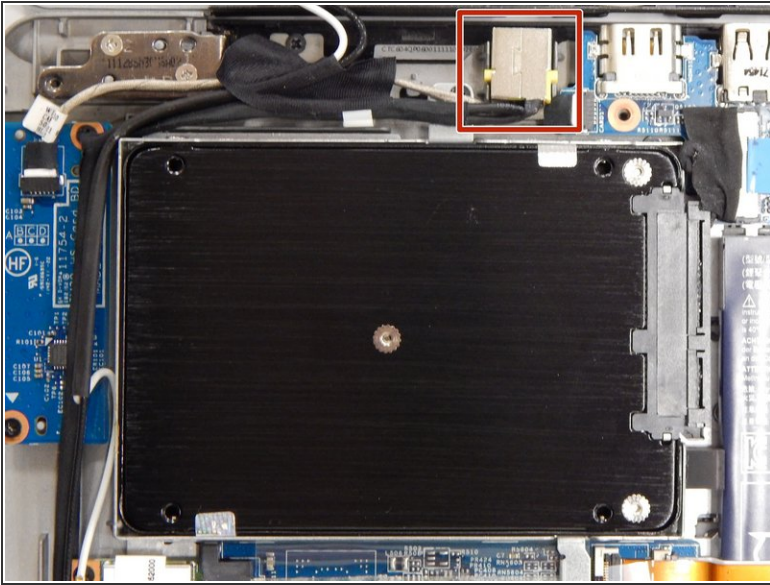
- Without bending it, lift the entire battery (both the long black piece and the rectangular blue piece) straight up. Place it off to one side.

Step 6 — Hard Drive (HDD/SDD)



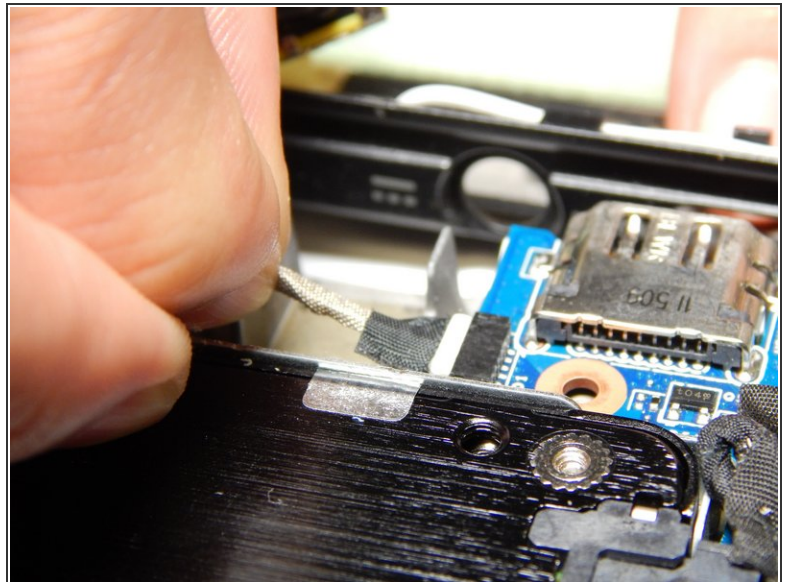
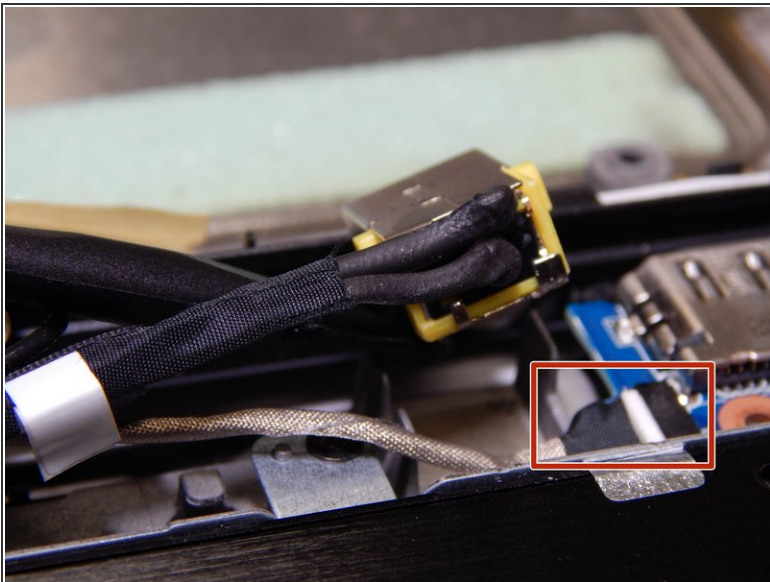
- Locate the hard drive, which is the black rectangular object just above the battery.

Step 7



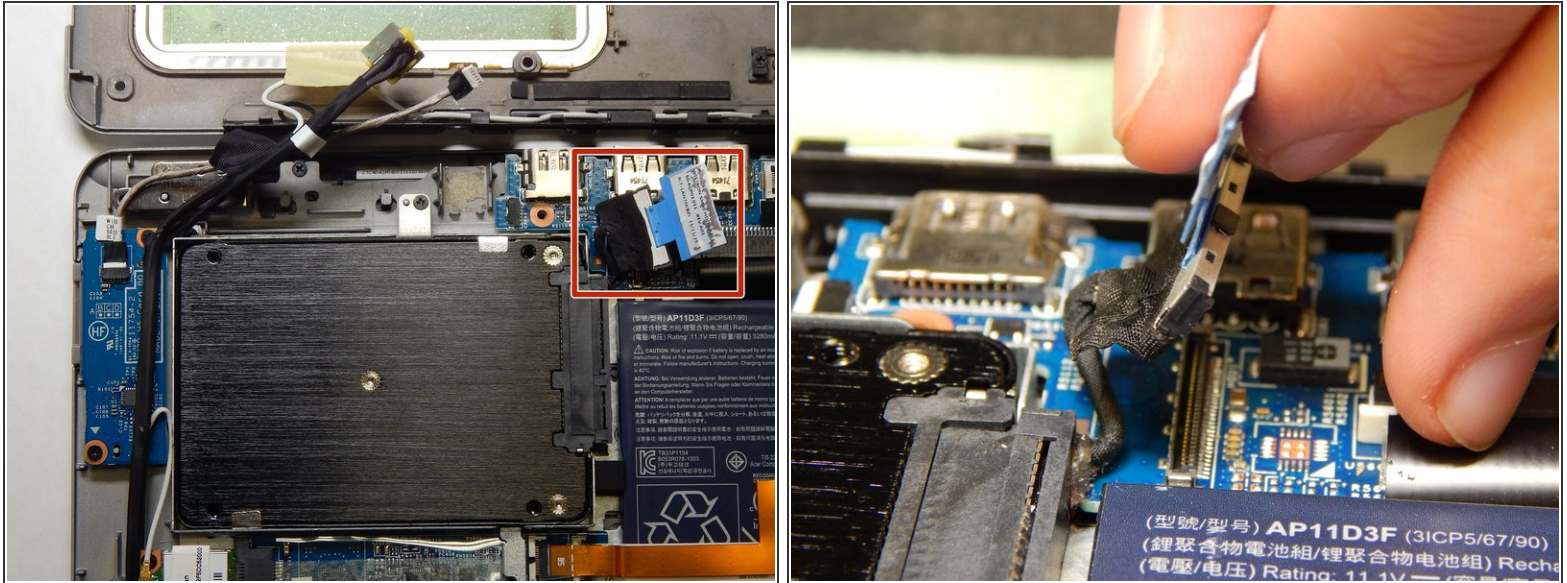
- Lift the silver and yellow cable next to the hard drive up with the spudger.

Step 8



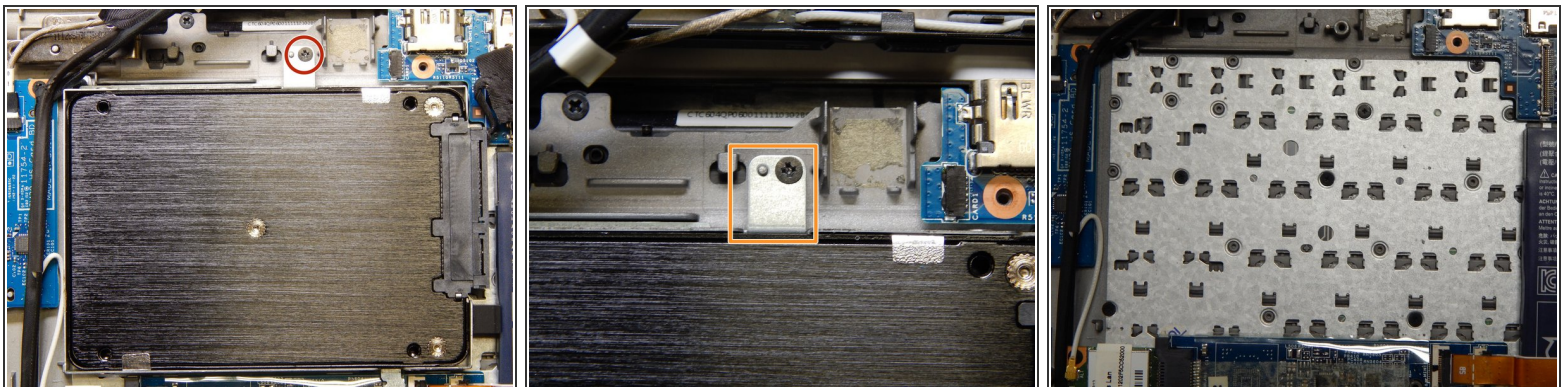
- Underneath the yellow cable, there is another gray and black cable.
- Use your fingernails to pull the gray and black cable out of its connector.

Step 9



- Pull on the blue tab near the hard drive to remove the connector for the motherboard.

Step 10



- Using a Phillips #0 screwdriver, remove the single 3 mm screw from the top of the hard drive sled.
- Lift the rectangular tab to pull the hard drive out of the laptop .

To reassemble your device, follow these instructions in reverse order.