



Acer Aspire Switch 10 SW5-012-18MY Docking Connectors Replacement

If your keyboard and tablet are not connecting properly, you may need to replace the docking connectors. This can be done by following this guide.

Written By: Grecia Corrada



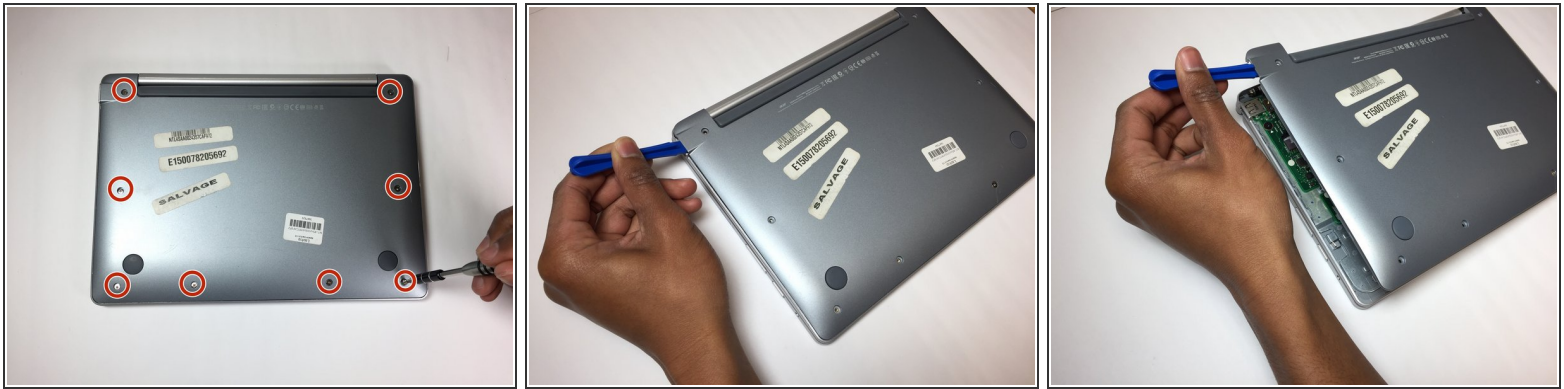
INTRODUCTION

If the tablet and keyboard of your device are not connecting properly, then you may need to replace the docking connectors on your device. Before attempting to replace the docking connectors, please visit the troubleshooting page, follow the directions under the heading **Keyboard Does Not Dock Properly**, and attempt any recommendations listed. If you have followed all of the instructions on the troubleshooting page and still have sporadic or non-existent communication between the tablet and keyboard, you can follow this guide to replace the docking connectors on your device.

TOOLS:

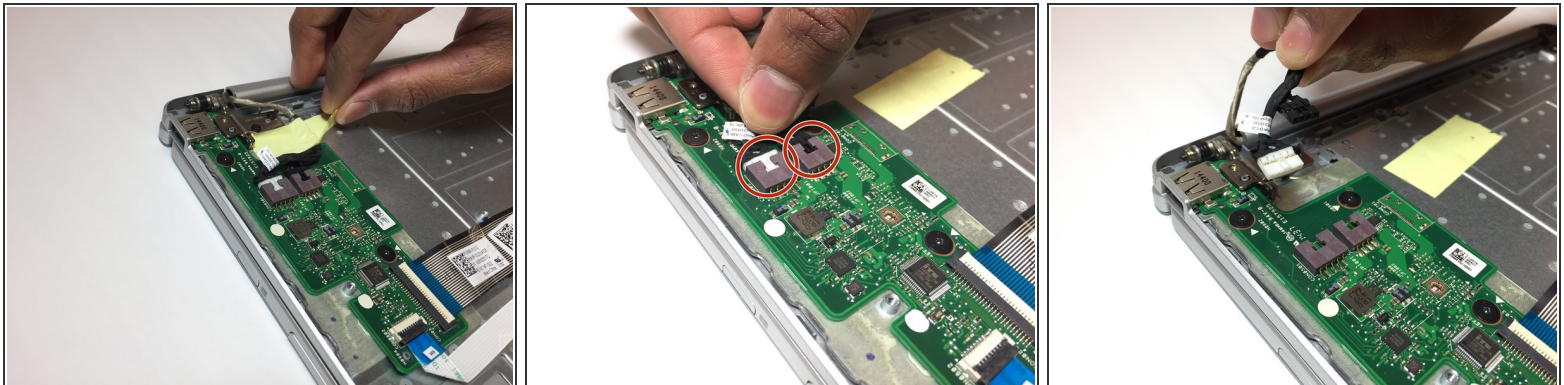
- [iFixit Opening Tool](#) (1)
 - [Phillips #0 Screwdriver](#) (1)
-

Step 1 — Docking Connectors



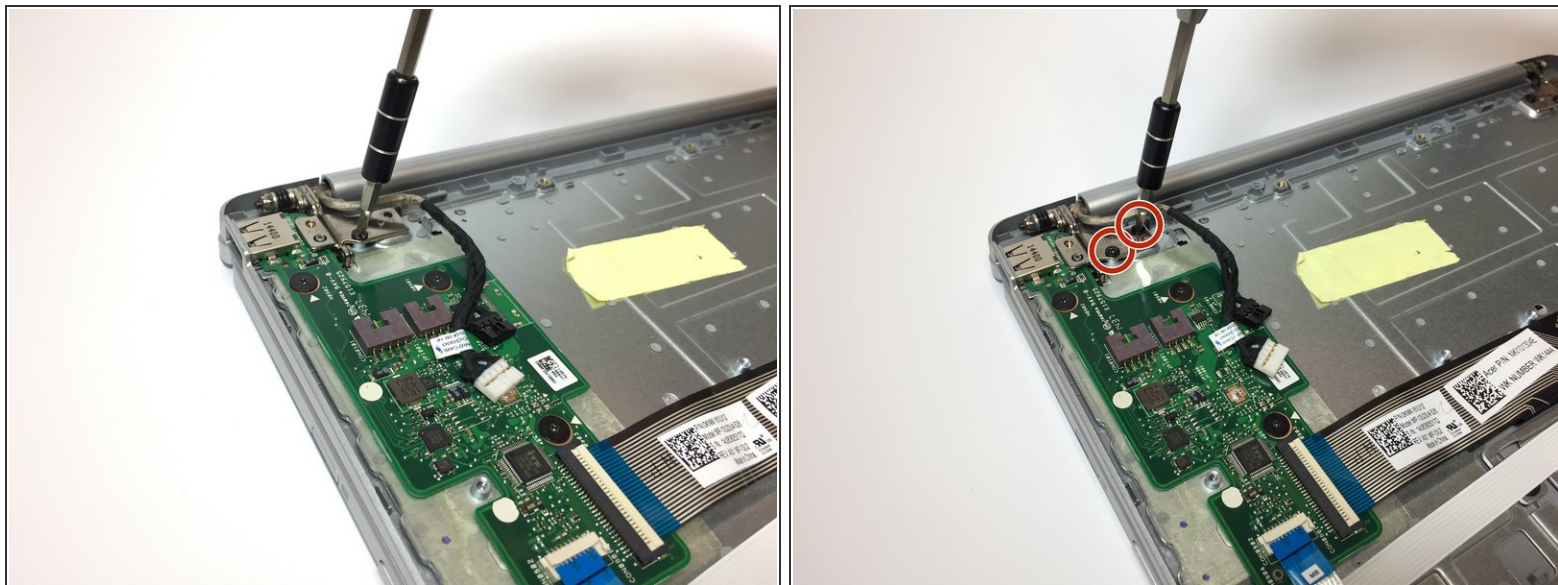
- Remove the 8, 5.25 mm screws on the back cover using the screwdriver.
- Insert the opening tool into the USB port.
- Carefully remove the back cover using the opening tool.

Step 2



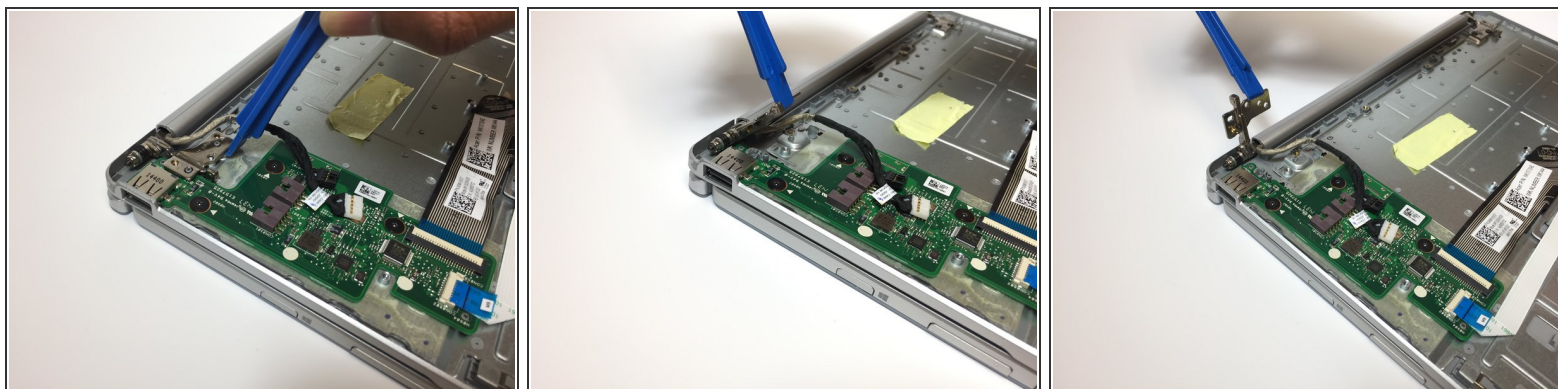
- Remove the yellow tape from the board cables.
- Carefully unplug the two board cables from their connectors by pulling on them.

Step 3



- Remove the 2, 4.25 mm screws on the left hand tab that are securing the dock in place.

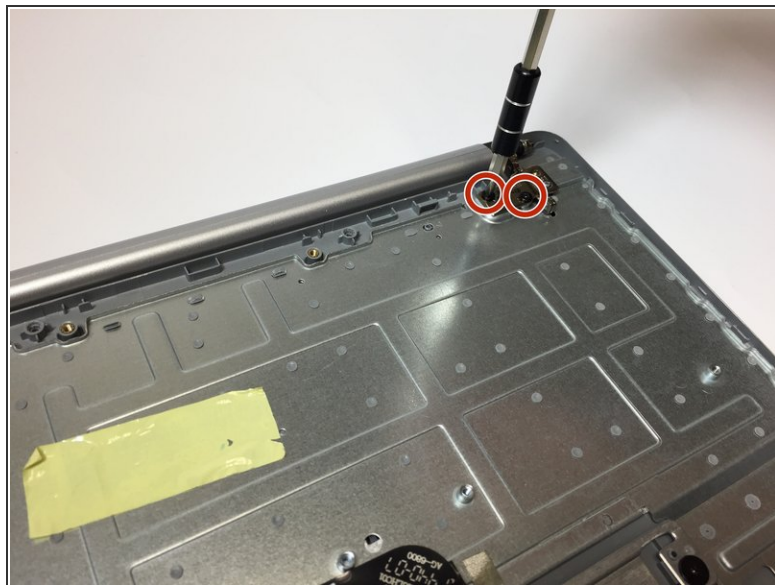
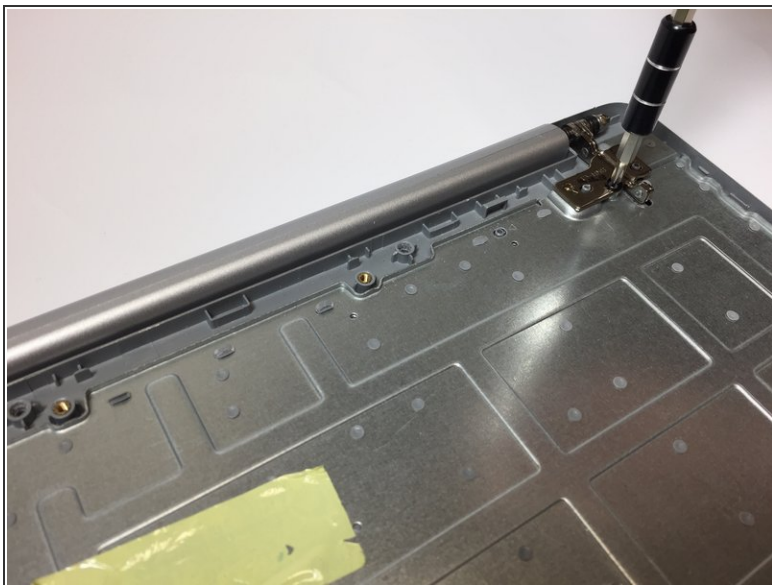
Step 4



- Lift up the metal tab on the left side using the opening tool.

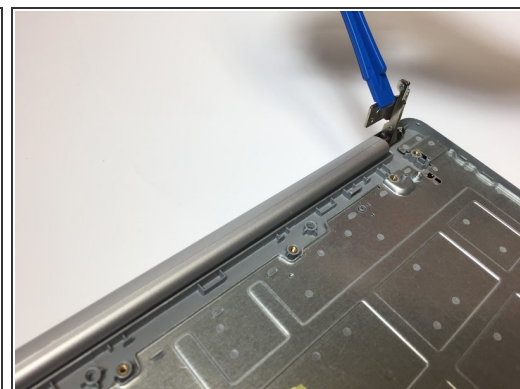
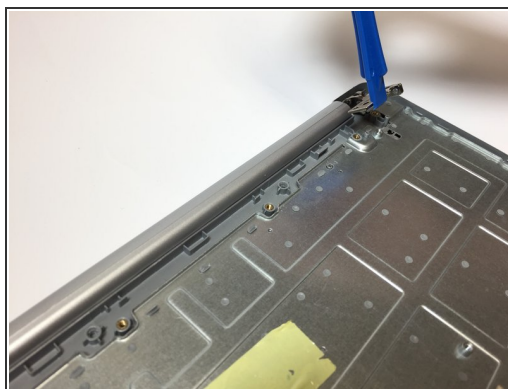
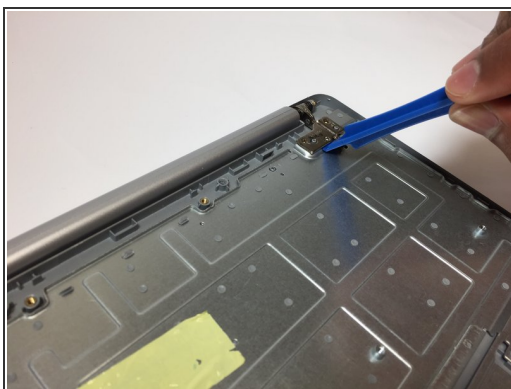
i Using your fingers may be easier than using the opening tool for this particular step, although both can be used.

Step 5



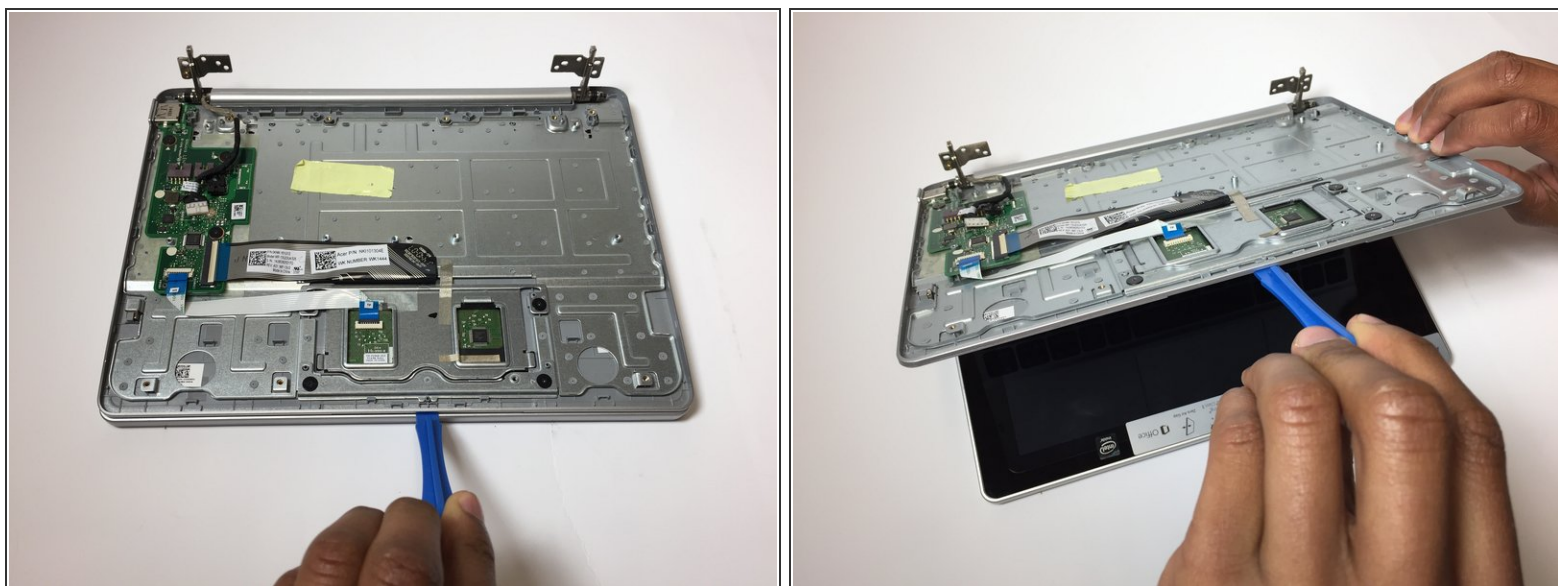
- Remove the 2, 4.25 mm screws on the right hand tab that are securing the dock in place.

Step 6



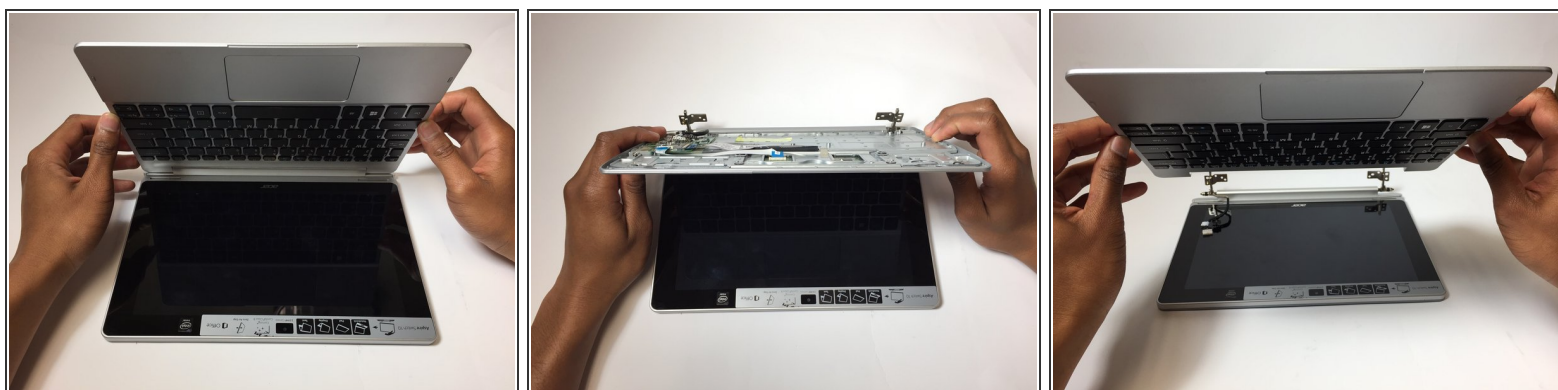
- Lift the metal tab on the right side up using the opening tool.
- ⓘ Using your fingers may be easier than using the opening tool for this particular step, although both can be used.

Step 7



- Insert the opening tool between the two sections of the device.
- Lift up the keyboard section using the opening tool.

Step 8



- Carefully pull up on the keyboard section using your hands to remove it from the screen section.

Step 9



- Pull the docking connector off of the screen section.

To reassemble your device, follow these instructions in reverse order.