



Acer Aspire TimelineU M5-481TG Keyboard Replacement

Replace your keyboard if keys are unresponsive even after cleaning.

Written By: Christina Crasto



INTRODUCTION

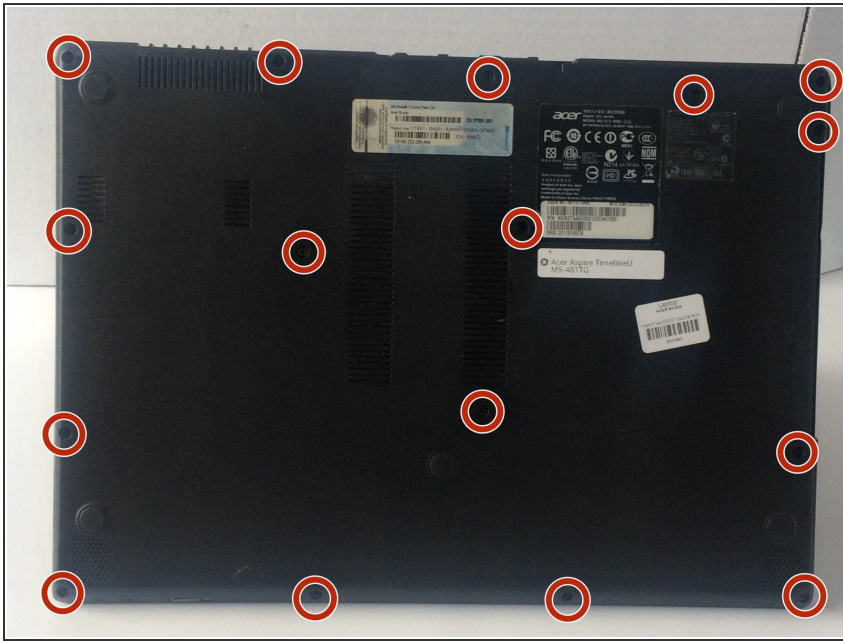
Before performing any repairs, make sure the laptop is fully powered off and disconnected from its charger. To repair most parts of the Acer Aspire TimelineU M5-481TG, it is necessary to first remove the keyboard. Be sure to wear a anti-static wrist strap during all laptop repairs. Prying open the keyboard must be done very gently and carefully to ensure that no wires are damaged.




TOOLS:

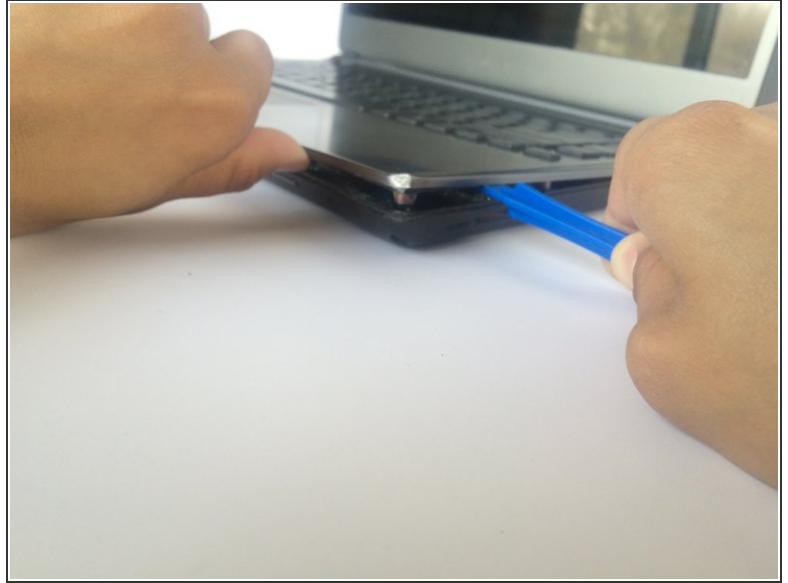
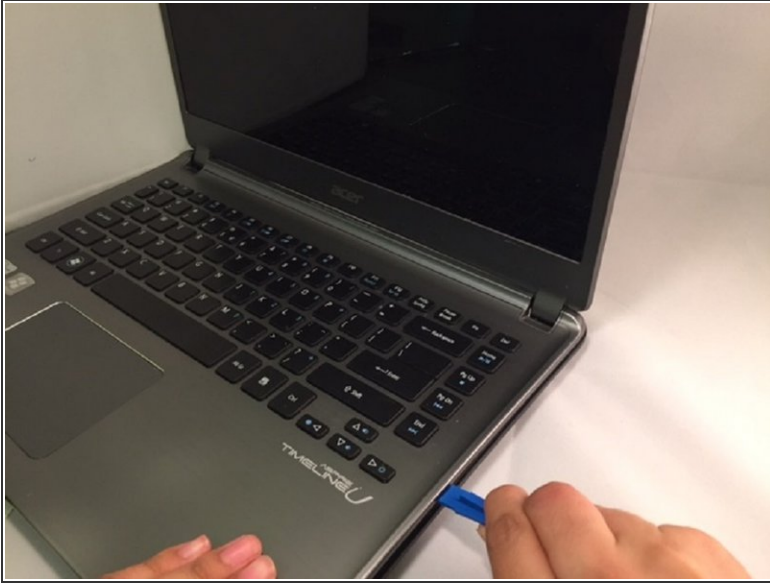
- [64 Bit Driver Kit](#) (1)
- [iFixit Opening Tools](#) (1)

Step 1 — Keyboard



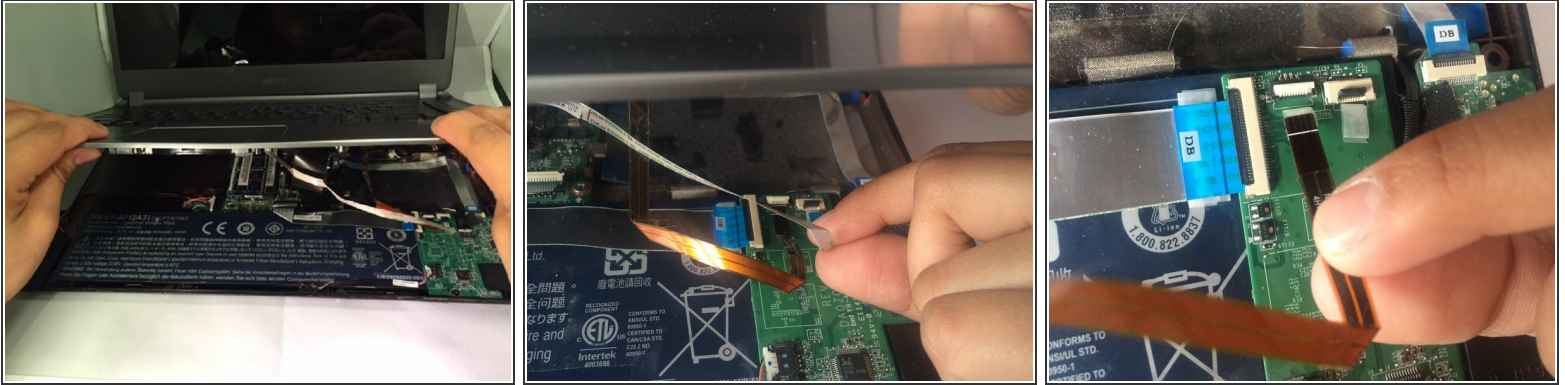
- With laptop closed and powered off, place the laptop screen side down.
-  Turn the laptop so that the hinges are closest to you.
- Unscrew all sixteen 6mm Phillips #J00 screws on the bottom of the laptop with the #J00 Phillips head screwdriver.

Step 2



- Once unscrewed, flip laptop over.
- ⓘ Rotate laptop 180 degrees, so you can open the screen.
- Open the laptop screen.
- Use the plastic opening tool with the half centimeter wide tip to gently separate the bottom case of the laptop from the keyboard.
- ⚠ Do not apply too much force or you may break the clips.
- Gently pull the keyboard upwards to a 45 degree angle.


Step 3



- Hold the keyboard open with one hand to extend the three cables (white, black and copper) still connecting the bottom of the keyboard to the back case.

 Be sure you are prying up the hinged retaining flap, not the connector itself.

- Use your fingernail to flip up the small retaining flap of each zero insertion force connector and then gently pull each ribbon cable out one at a time.

 The white line on this ribbon cable marks the edge of the connection area. To reinstall, insert the cable into the connector up to this line and then close the retaining flap. If the cable doesn't insert easily up to (or very near to) this line, it's probably misaligned and needs to be gently removed and repositioned.

Step 4



- Use both hands to remove the keyboard.
- ⚠ Do not pull too forcibly or you could damage your keyboard.

To reassemble your device, follow these instructions in reverse order.