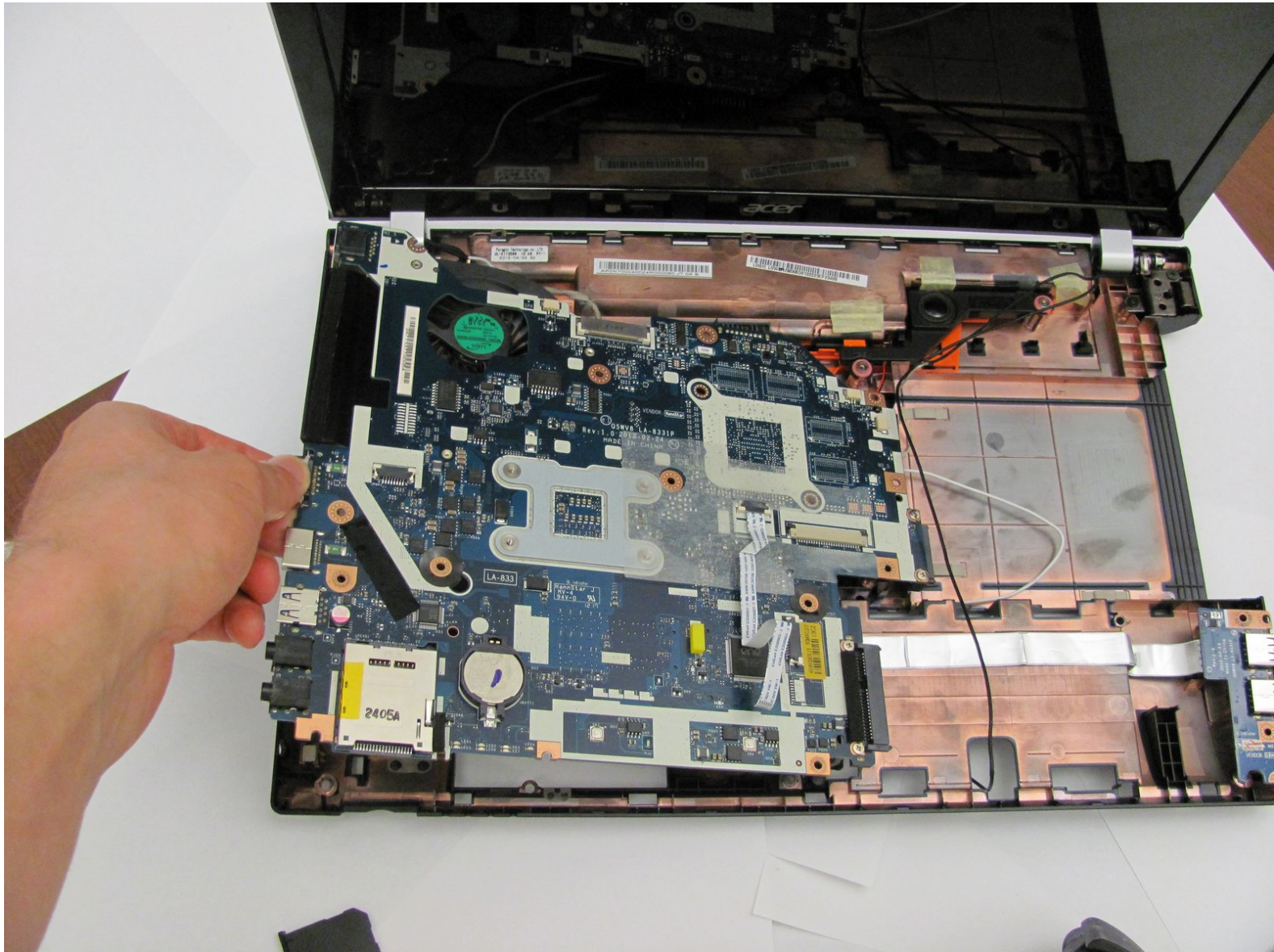




Acer Aspire V3-551-8887 Motherboard Replacement

Acer Aspire V3-551-8887 Motherboard replacement guide.

Written By: Alexander Lazar



INTRODUCTION

The motherboard is pretty important. Follow this guide to replace yours.



TOOLS:

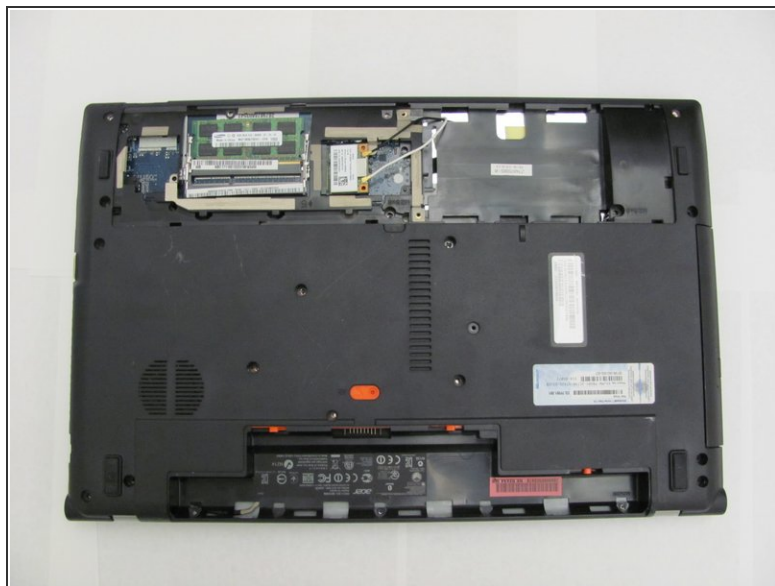
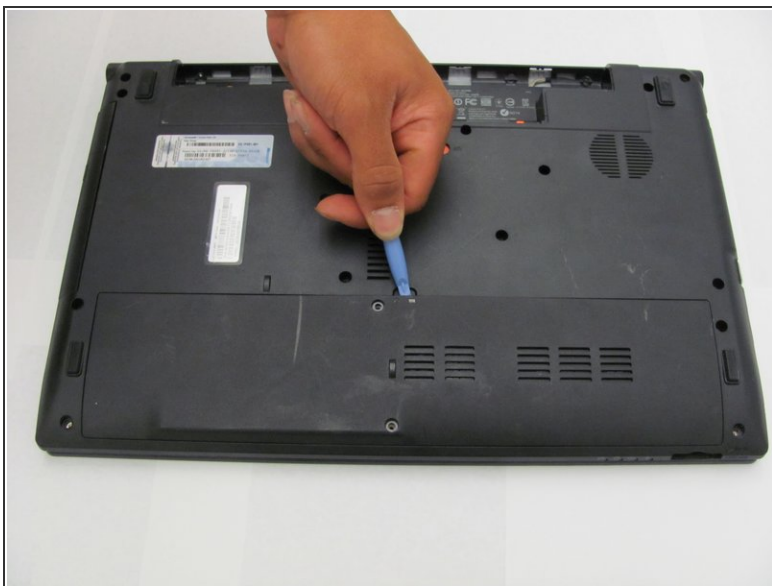
- [64 Bit Driver Kit](#) (1)
 - [Phillips #1 Screwdriver](#) (1)
 - [Spudger](#) (1)
-

Step 1 — Back Panel



- Locate and remove the two 5.3 mm Phillips #1 screws holding the back panel in place.

Step 2



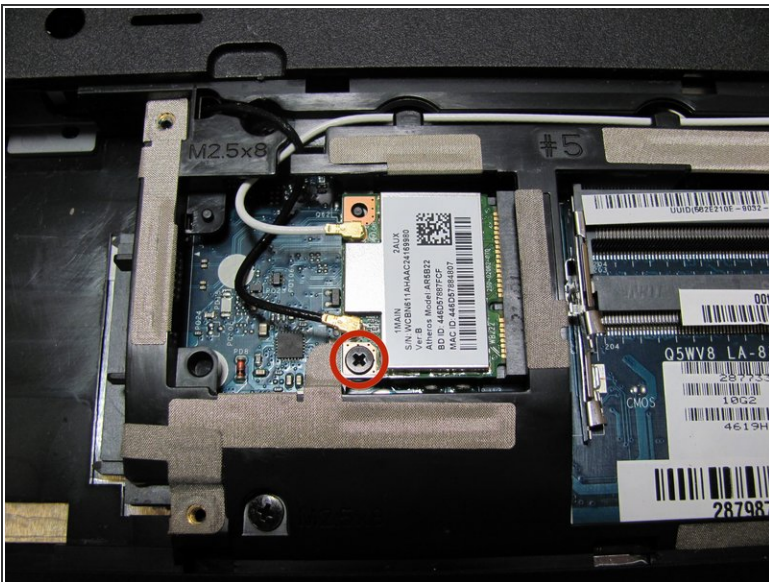
- Use a spudger to pry the panel up from the laptop case and remove it.
- The laptop should now be open with the RAM and wifi chip now accessible.

Step 3 — USB Ports



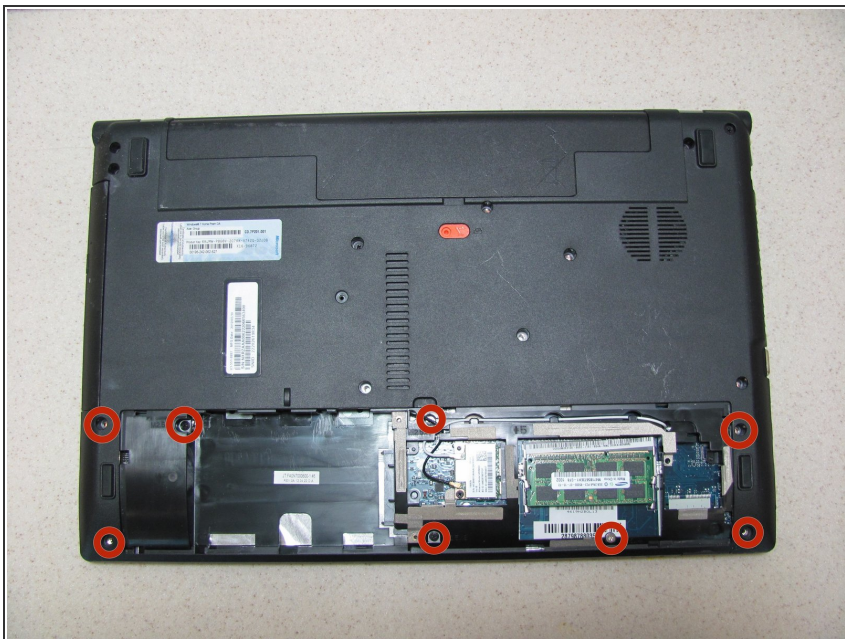
- Locate the wifi chip.

Step 4



- Remove the 5 mm Phillips #1 screw holding the wifi chip in place.
- Carefully remove the wifi chip.

Step 5



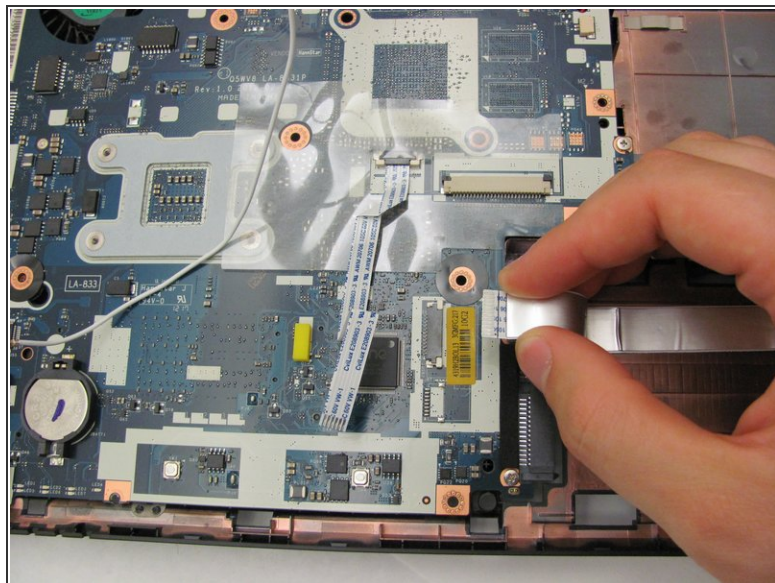
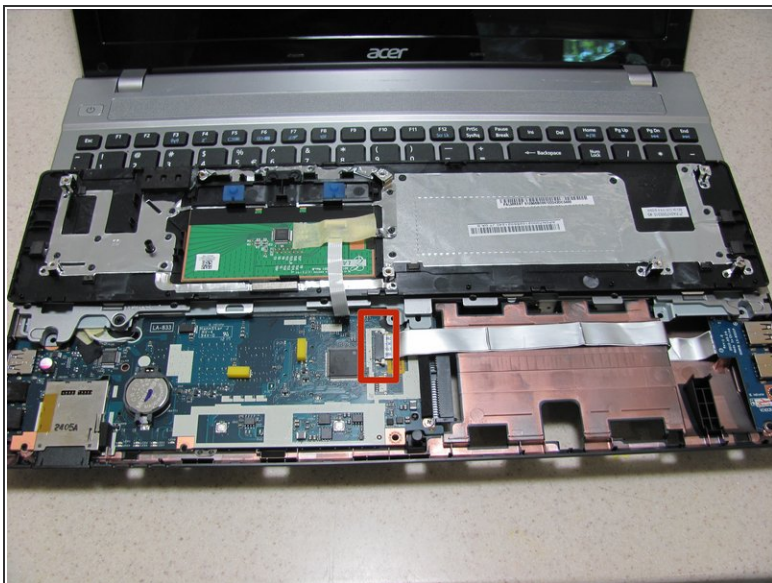
- Remove the 8, 9 mm Phillips #1 screws holding the panel in place.

Step 6



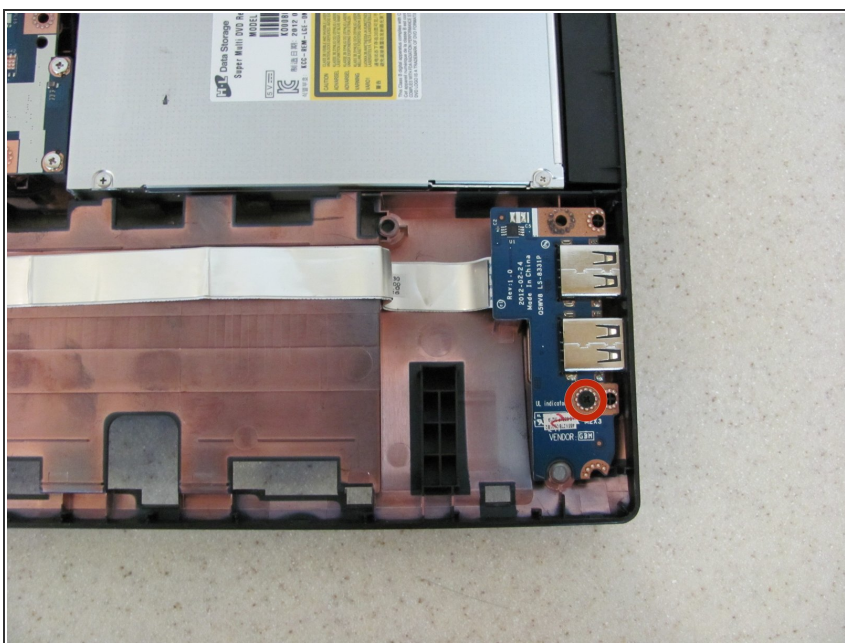
- Flip the computer over, and with a spudger, remove the black panel directly below the keyboard.
- Remove the panel and flip it up onto the keyboard

Step 7



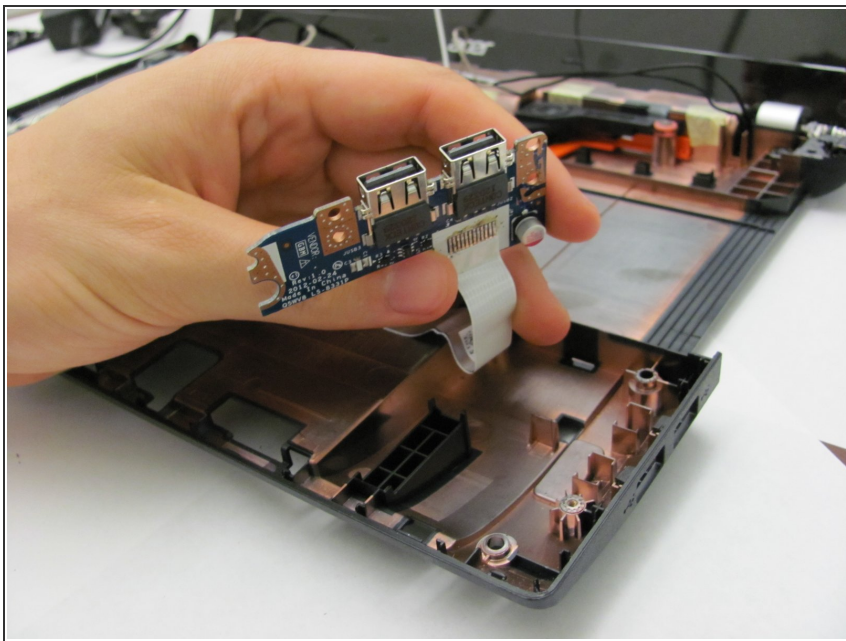
- With the panel removed, locate the USB port ribbon cable connecting to the motherboard.
- Carefully disconnect the ribbon cable.

Step 8



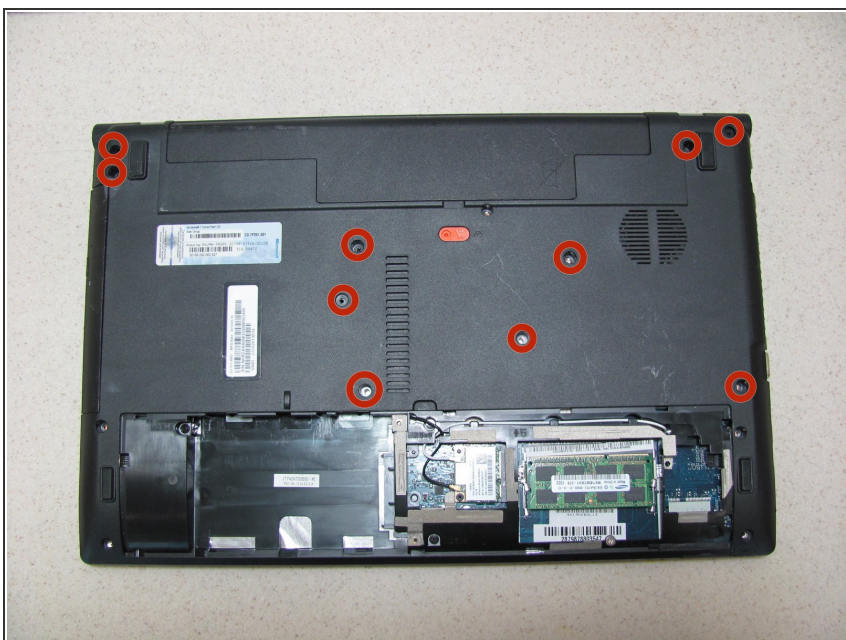
- Unscrew the 5 mm Phillips #1 screw holding the USB ports in place.

Step 9



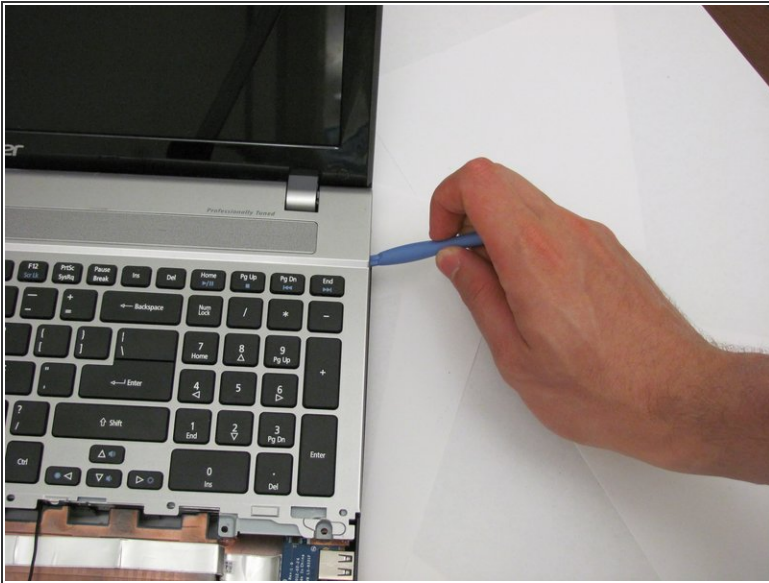
- The USB ports can now be removed from the laptop.

Step 10 — Keyboard



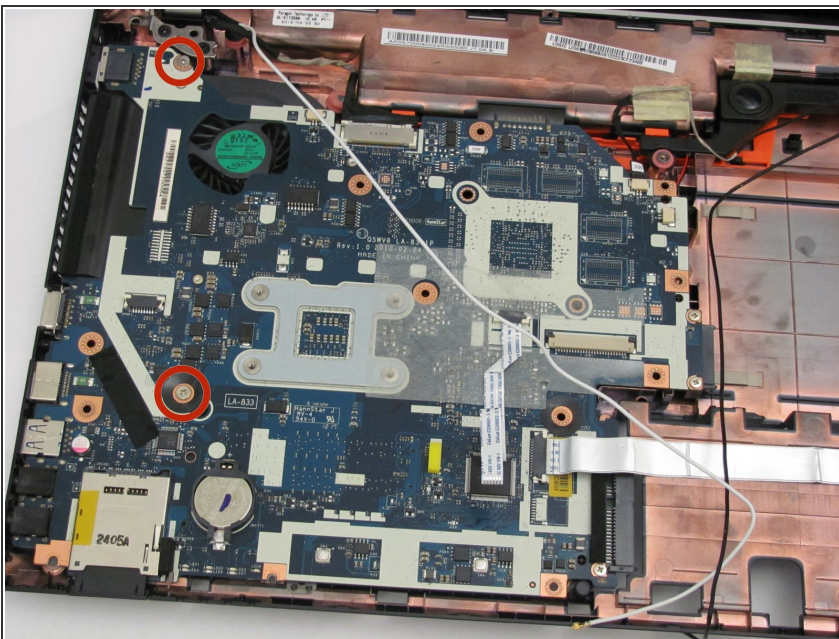
- Flip the laptop and remove all 10 of the remaining 9mm screws from the back.

Step 11



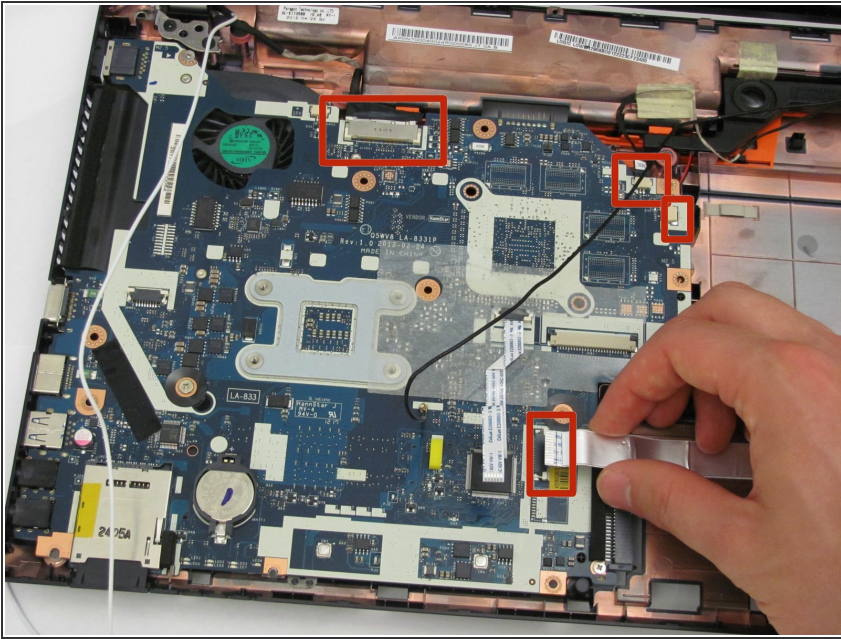
- Use a spudger to gently lift the keyboard.

Step 12 — Motherboard



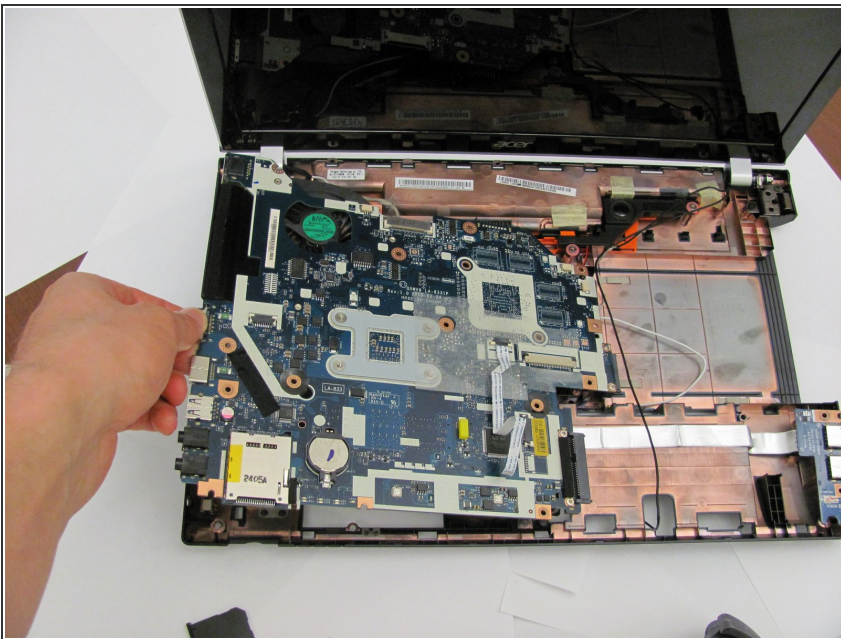
- Remove the two 10 mm Phillips #1 screws connecting the motherboard to the case.

Step 13



- Disconnect the 4 ribbon cables connected to the motherboard.
- ⓘ Some ribbon cable connections may not be accessible until after beginning to lift.

Step 14



- Very carefully lift the motherboard.
- ⚠ Do not force the board. If stuck, check that the ports on the left are not stuck, that no wires are still attached, and no screws are still in.

To reassemble your device, follow these instructions in reverse order.