



# Acer Aspire V3-771G Hard Drive Replacement

Replace the primary hard drive in the V3-771G laptop for more space or a faster hard drive.

Written By: David Walker



## INTRODUCTION

If the hard drive of your Acer Aspire V3-771G is full, your looking to upgrade, or your previous one is broken, this guide will help you to replace the old hard drive with a new one.

Warning: Static electric shocks may damage a good hard drive, or other components in the laptop. Ground yourself to the laptop by touching any metal interior part, besides electrical connections, or wear an anti-static device (preferred) before removing or adding computer parts.



### TOOLS:

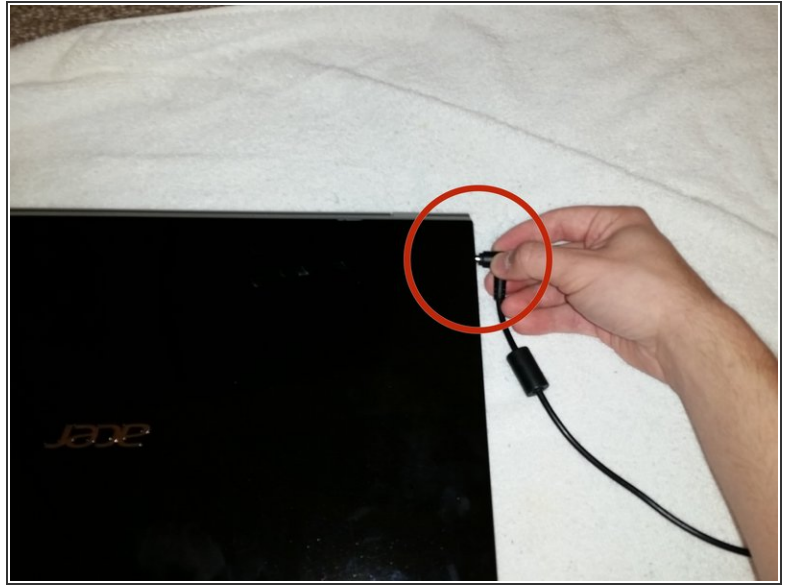
- [Phillips #1 Screwdriver](#) (1)



### PARTS:

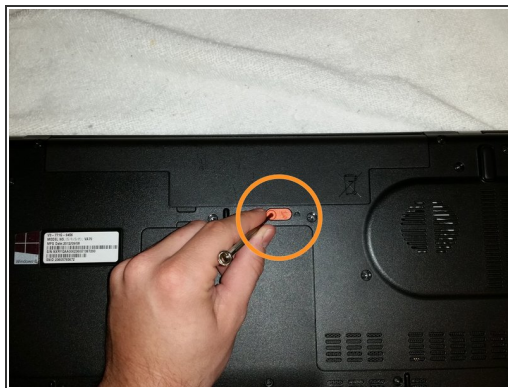
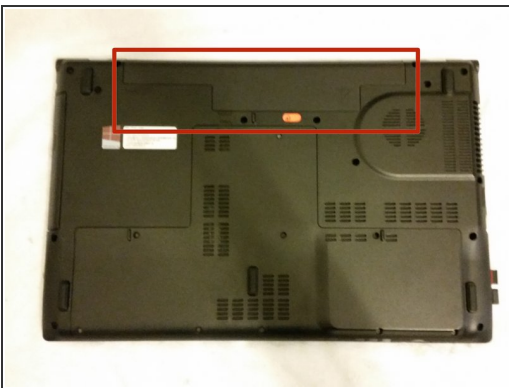
- [1 TB SSD / Upgrade Bundle](#) (1)
- [250 GB SSD / Upgrade Bundle](#) (1)
- [500 GB SSD / Upgrade Bundle](#) (1)
- [2 TB SSD / Upgrade Bundle](#) (1)

## Step 1 — Hard Drive



- Shut down the laptop.
- Remove the power charging cord from the laptop

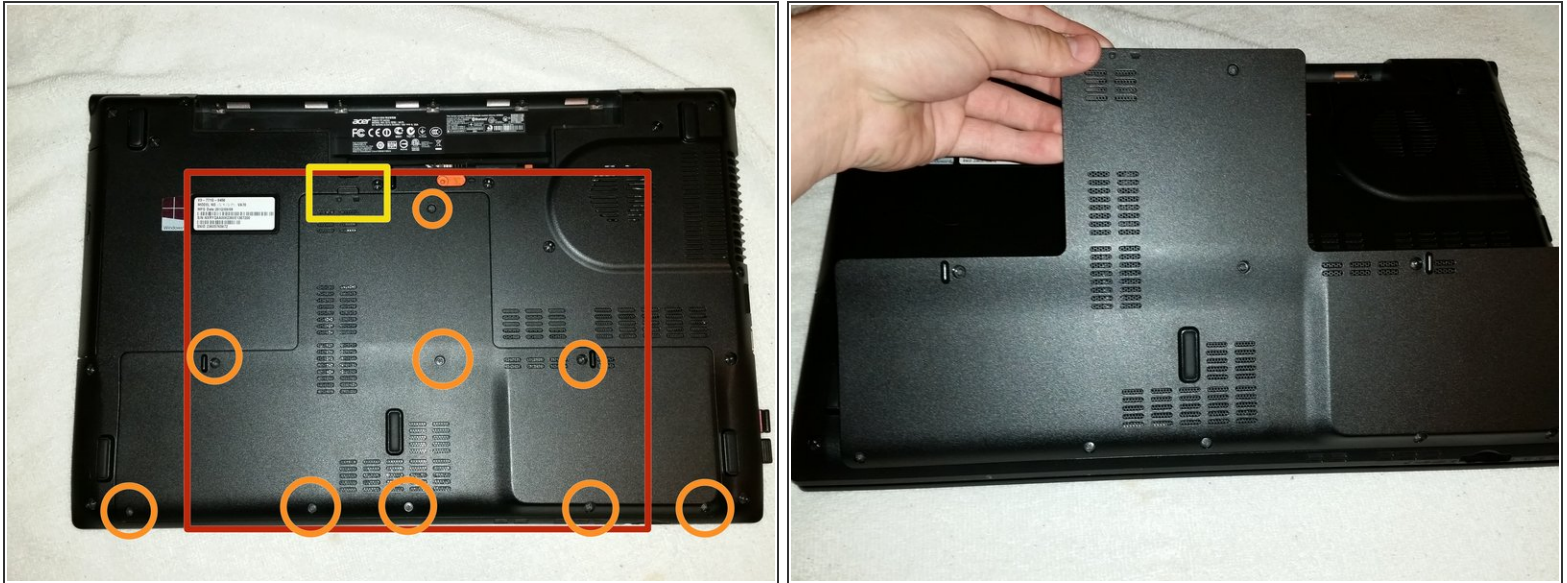
## Step 2



- Flip the laptop over, and find the battery compartment.
- Use the screwdriver to move the orange slider located just below the battery compartment to the right.
- ⚠ Do not touch the battery connectors on the battery or laptop.
- Lift the battery up and remove from the compartment.

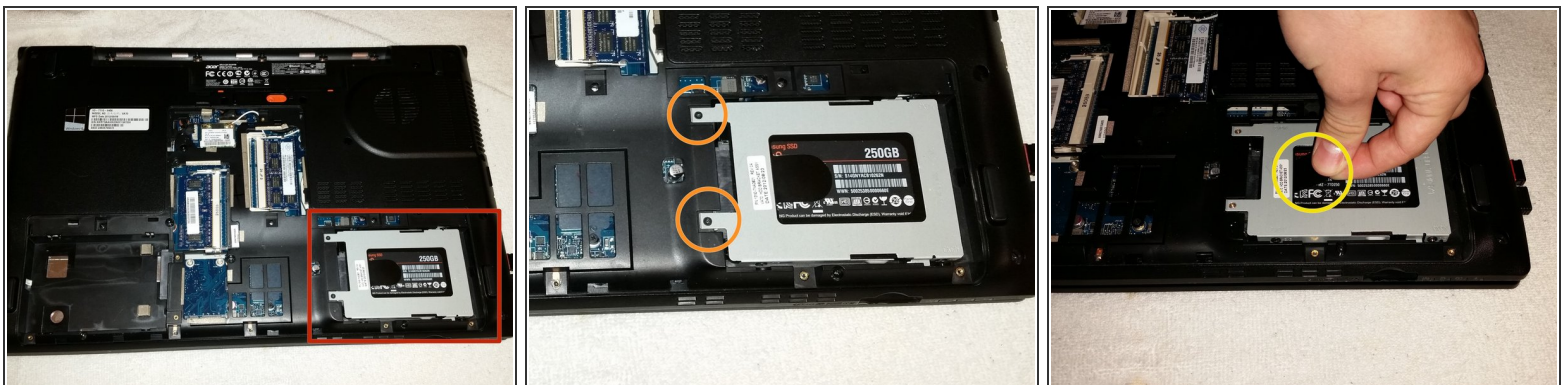


### Step 3



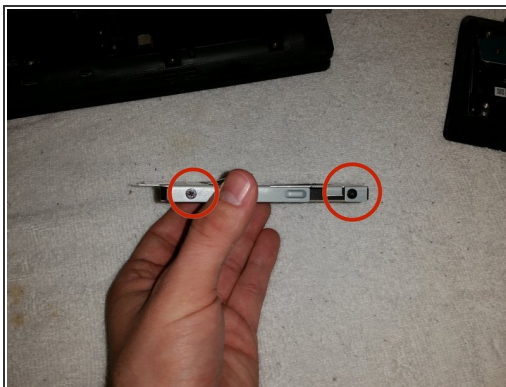
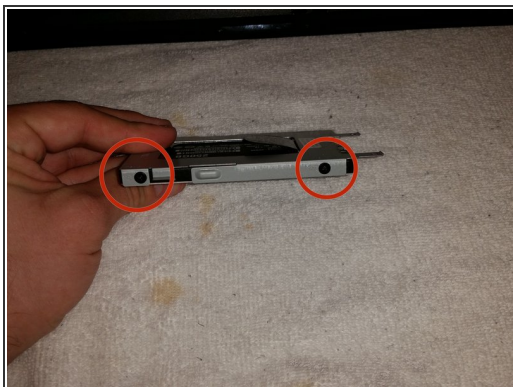
- Locate the T-shaped panel on the back of the laptop.
- Using the screwdriver, remove the 9 screws in this panel. Screw size: 5.5X8mm
- Gently lift the panel up from the open slot, use the opening tools as necessary, to free the panel from the laptop.

### Step 4



- Locate the main hard drive compartment on the bottom left side of the laptop.
- Remove the two screws holding the hard drive sled in place.
- While grounding yourself, gently pull the black tag straight back, not up, to free the hard drive.

## Step 5



- Locate the four screws holding the hard drive to the sled. Screw Size: 2X4mm
- Using the screwdriver, remove the four screws.
- Carefully remove the hard drive. A new one may now be installed.

To reassemble your device, follow these instructions in reverse order.