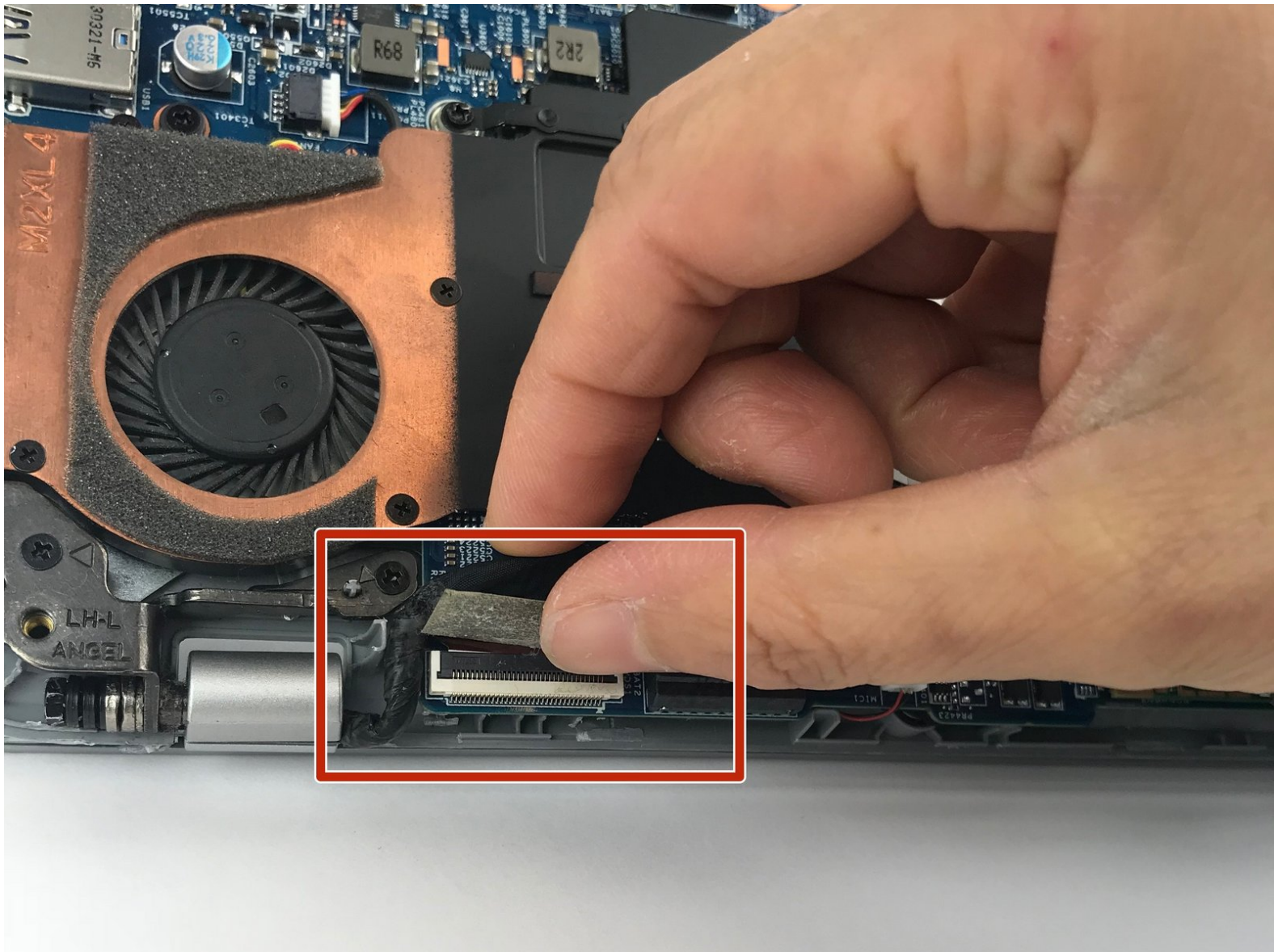




Acer Aspire V5-122P-0468 Display Replacement

This guide will show how to remove and replace the display in your acer aspire laptop.

Written By: Nat McCormick



INTRODUCTION

If the display is malfunctioning on your Acer Aspire V5-122P-0468 laptop follow this guide to replace it yourself.

TOOLS:

- [Phillips #0 Screwdriver](#) (1)
 - [Spudger](#) (1)
 - [iFixit Opening Tools](#) (1)
 - [Anti-Static Wrist Strap](#) (1)
-

Step 1 — Battery



- Remove the nine 4mm screws with a PH0 screwdriver.
- Remove the two 6mm screws with a PH0 screwdriver.

Step 2



- Remove the black rubber tab on the back of the computer
- Remove the 4mm screw hidden underneath the black tab with a PH0 screwdriver.

Step 3



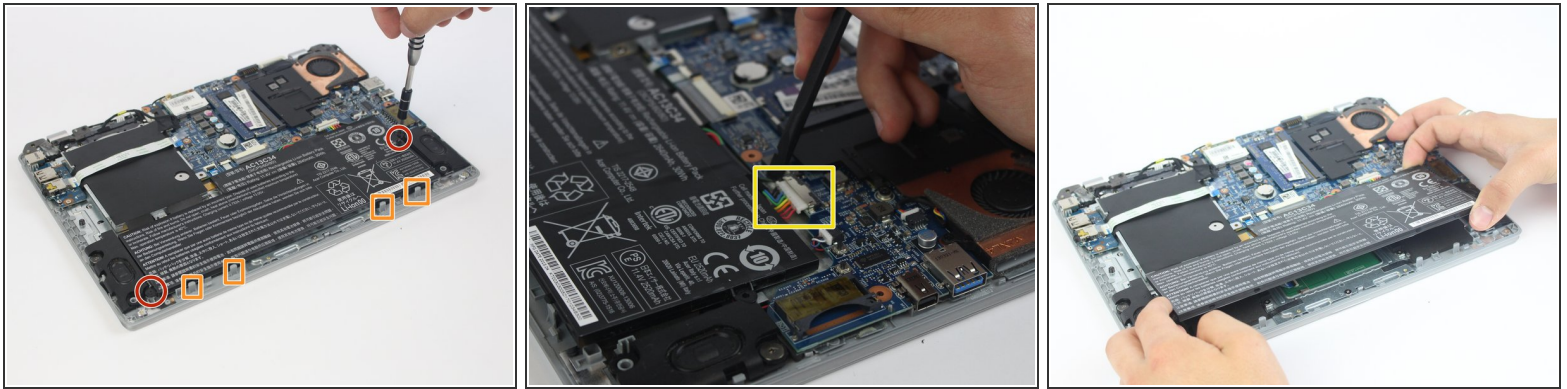
- Orient the computer upside down, with the hinges facing away from you.
- Find the black plastic piece in the SD card slot on the right side of the computer.
- Remove the plastic piece by sliding it out of the SD card slot.

Step 4



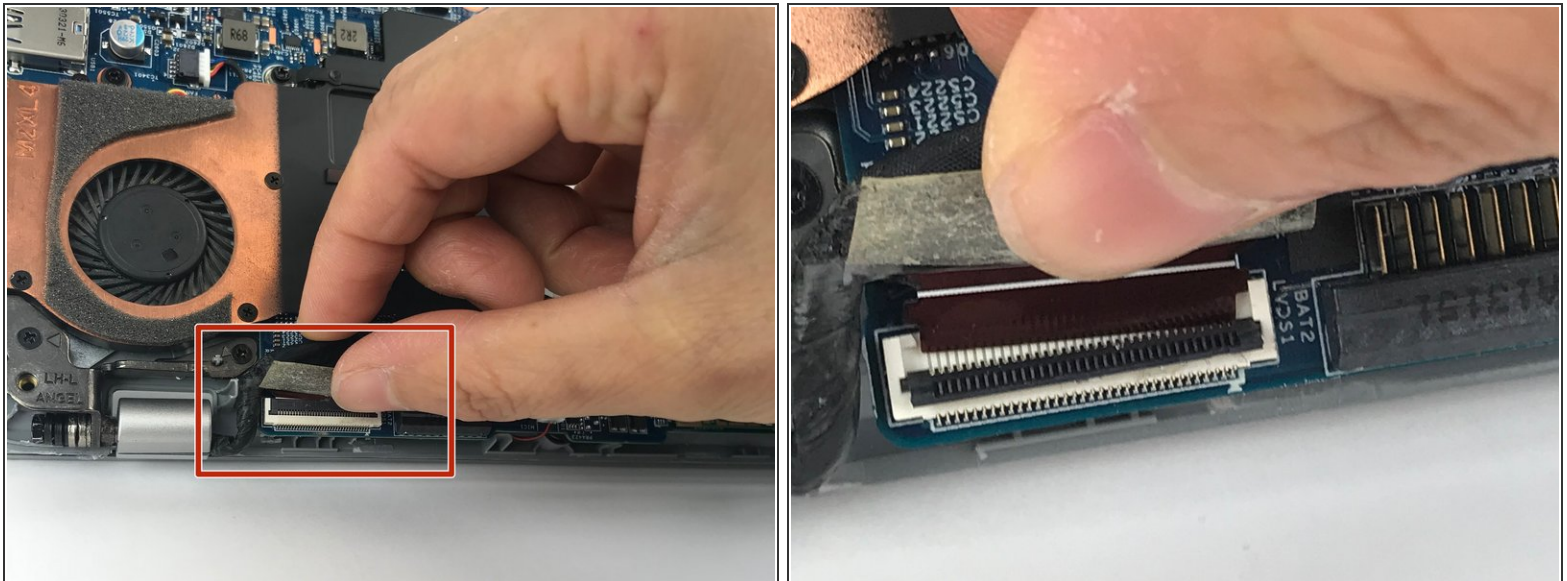
- Insert a spudger at these eight locations to disengage the plastic tabs from the housing cover, and pry apart.
 - Continue around the entire perimeter of the cover with the spudger.
- i** Use a spudger to pry the cover around I/O ports.

Step 5



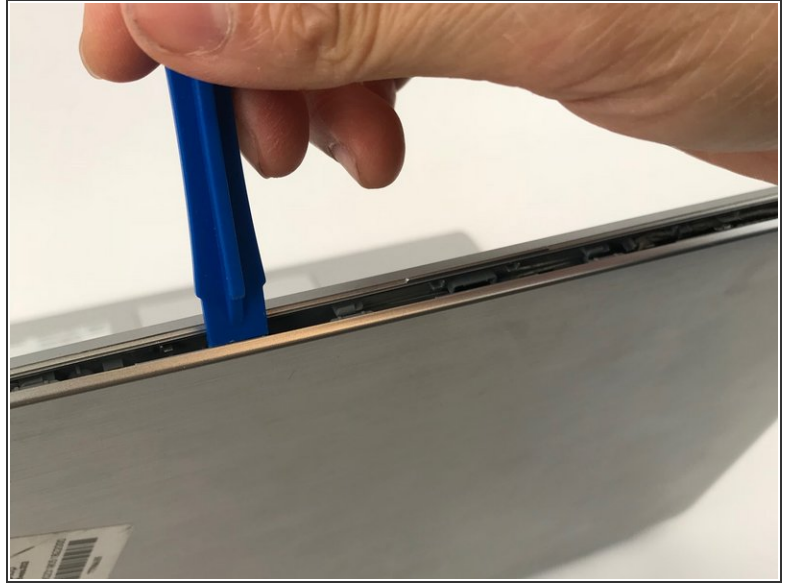
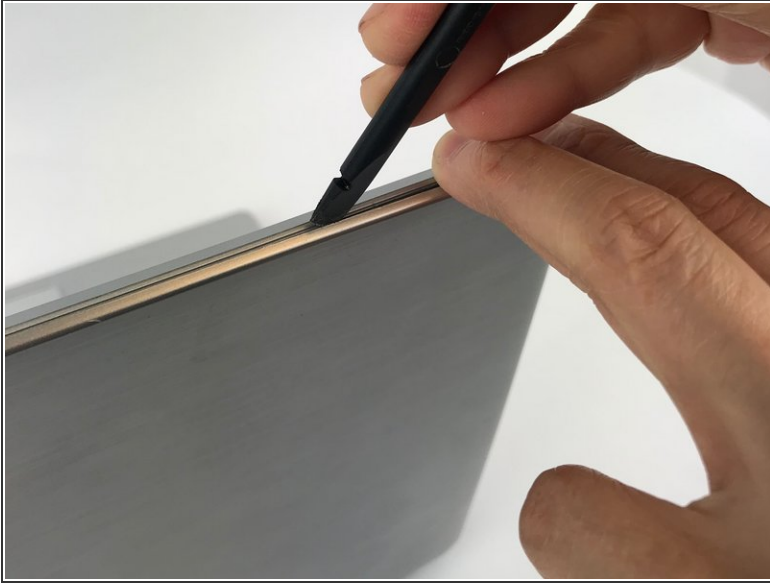
- Remove the two 4mm screws using a PH0 screwdriver.
- Depress the tabs holding the battery with a spudger.
- Disconnect the battery connector from the motherboard using a spudger.
- Pull the battery up and away from the laptop to remove.

Step 6 — Display



- Flip up the black locking tab on the ZIF connector, and pull out the ribbon cable.

Step 7



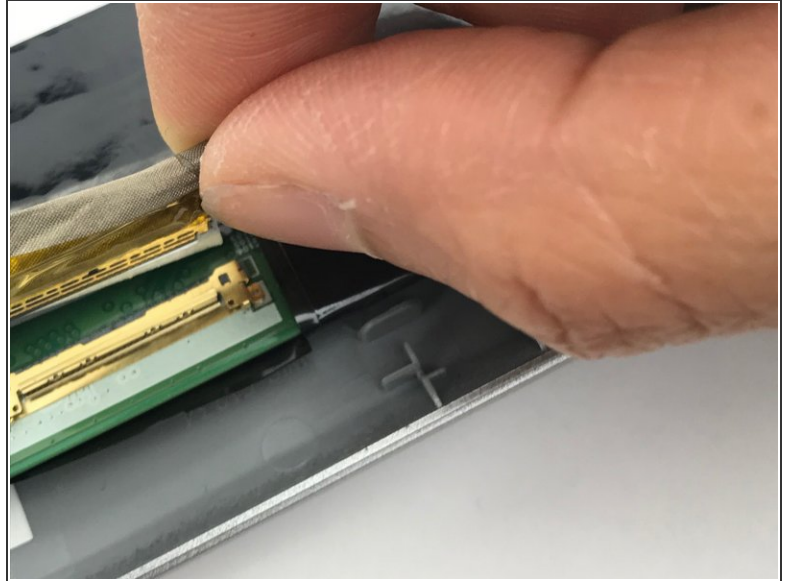
- Wedge a spudger in between the plastic bezel frame and back cover to create a gap.
- Then insert a plastic opening tool to pry apart the bezel from the back cover.
- Work your way around the perimeter of the cover with the plastic opening tool.

Step 8



- Open up the laptop to unsnap the hinges from the back of the computer.
- Slide the pin connector and cable through the hinge that connects the display to the rest of the laptop.

Step 9



- Remove the transparent tape covering the pin connector.
- Unplug the pin connector from the display.

Step 10



- Cut the tape between the display and the plastic frame using the flat end of a spudger.
- Work the spudger around the perimeter of the display to separate it from the bezel.
- ⓘ The display is attached with a strong adhesive. Applying heat with a hairdryer or heat gun may make the removal process easier.

To reassemble your device, follow these instructions in reverse order.