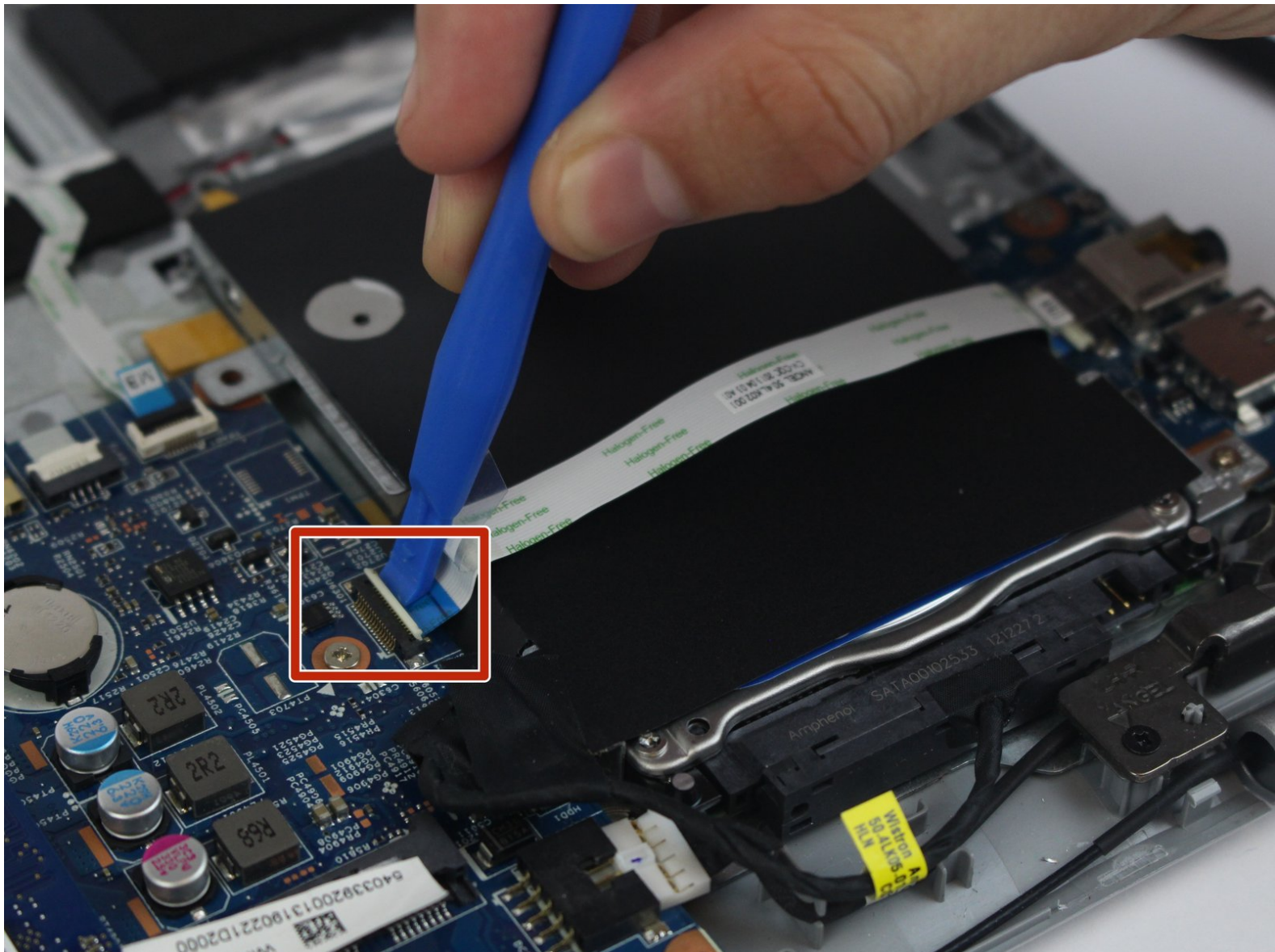




# Acer Aspire V5-122P-0468 Hard Drive Replacement

This guide will show you how to safely remove and replace the hard drive in you acer laptop.

Written By: Nat McCormick



## INTRODUCTION

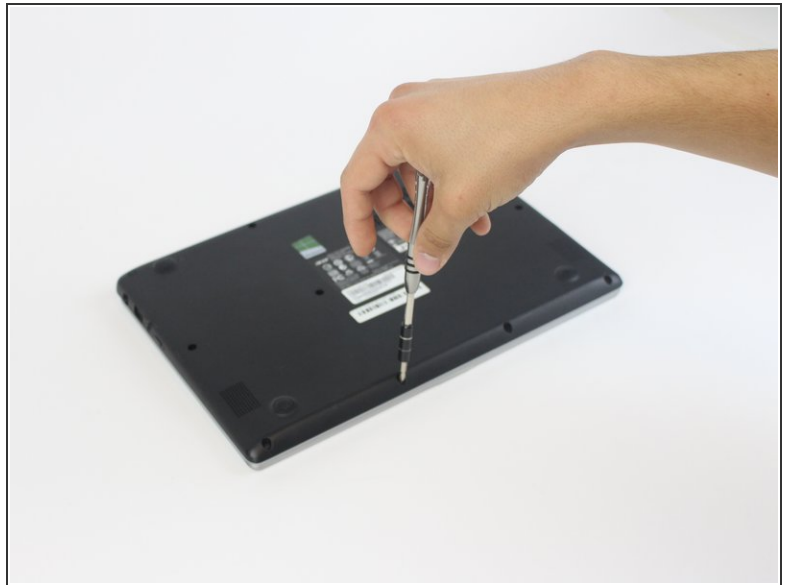
Before doing this replacement make sure that you have a correct 2.5" hard drive to use. The original drive is a 500 GB hard drive, but any size could be used as a replacement.

---

### TOOLS:

- [Anti-Static Wrist Strap](#) (1)
  - [Phillips #0 Screwdriver](#) (1)
  - [Spudger](#) (1)
  - [iFixit Opening Tools](#) (1)
-

## Step 1 — Battery



- Remove the nine 4mm screws with a PH0 screwdriver.
- Remove the two 6mm screws with a PH0 screwdriver.

## Step 2



- Remove the black rubber tab on the back of the computer
- Remove the 4mm screw hidden underneath the black tab with a PH0 screwdriver.

## Step 3



- Orient the computer upside down, with the hinges facing away from you.
- Find the black plastic piece in the SD card slot on the right side of the computer.
- Remove the plastic piece by sliding it out of the SD card slot.

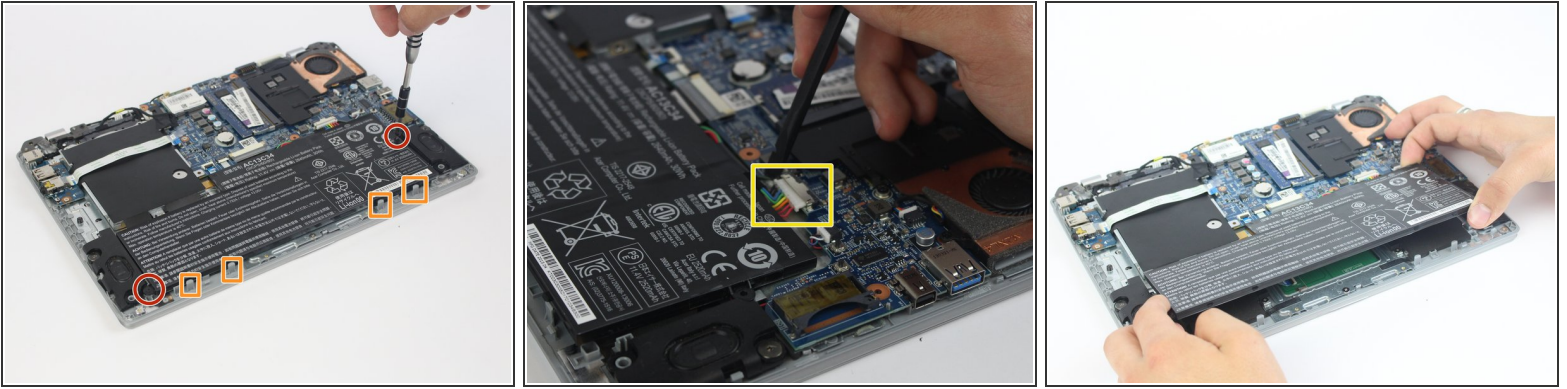
## Step 4



- Insert a spudger at these eight locations to disengage the plastic tabs from the housing cover, and pry apart.
  - Continue around the entire perimeter of the cover with the spudger.
- i** Use a spudger to pry the cover around I/O ports.



## Step 5



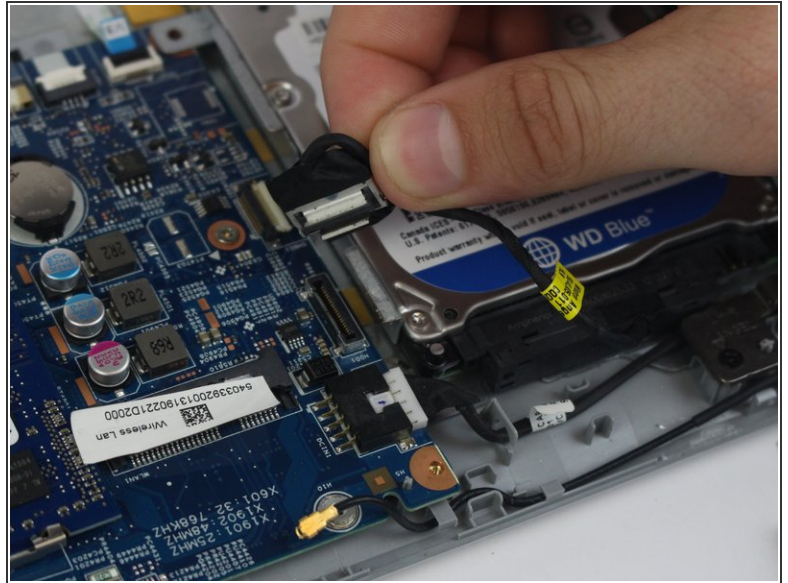
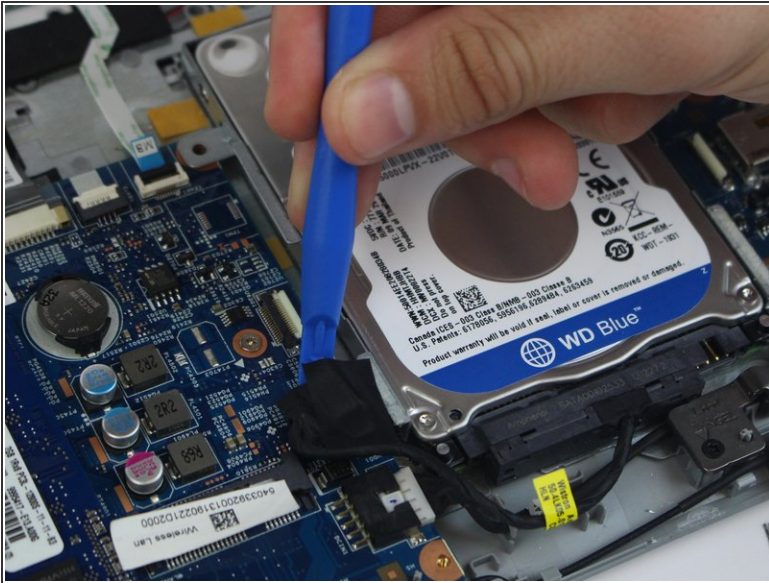
- Remove the two 4mm screws using a PH0 screwdriver.
- Depress the tabs holding the battery with a spudger.
- Disconnect the battery connector from the motherboard using a spudger.
- Pull the battery up and away from the laptop to remove.

## Step 6 — Hard Drive



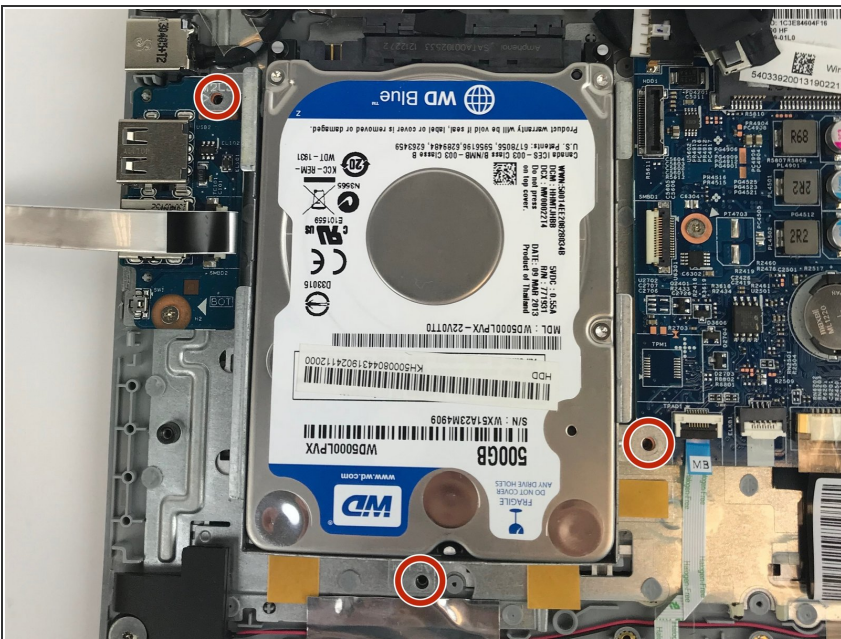
- Use a plastic opening tool to pop the latch up on the ZIF connector up.
- Pull out the ribbon cable to disconnect it from one side.
  - ⓘ The cable can be left connected to the other side.
- Remove the black isolation pad.

## Step 7



- Disconnect the data connector from the motherboard using a plastic opening tool.

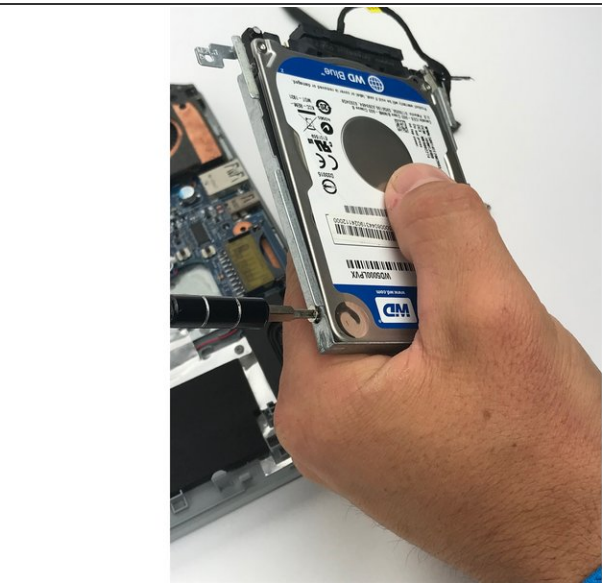
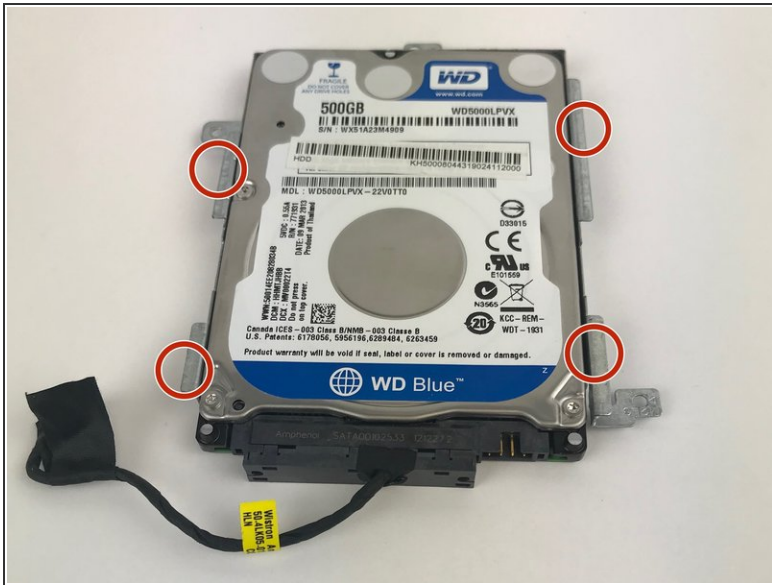
## Step 8



- Remove three 4mm Phillips #0 screws.
- Remove hard drive with rail attached from laptop.



## Step 9



- Remove the four 3mm Phillips #0 screws located on the side of the rails.
- Separate the hard drive from the mounting rail.

To reassemble your device, follow these instructions in reverse order.