



# Acer Aspire V5-122P-0889 Battery Replacement

This guide will describe how to remove the backing of the computer and also where the screws are located to remove the battery.

Written By: Katelynn couto



# INTRODUCTION

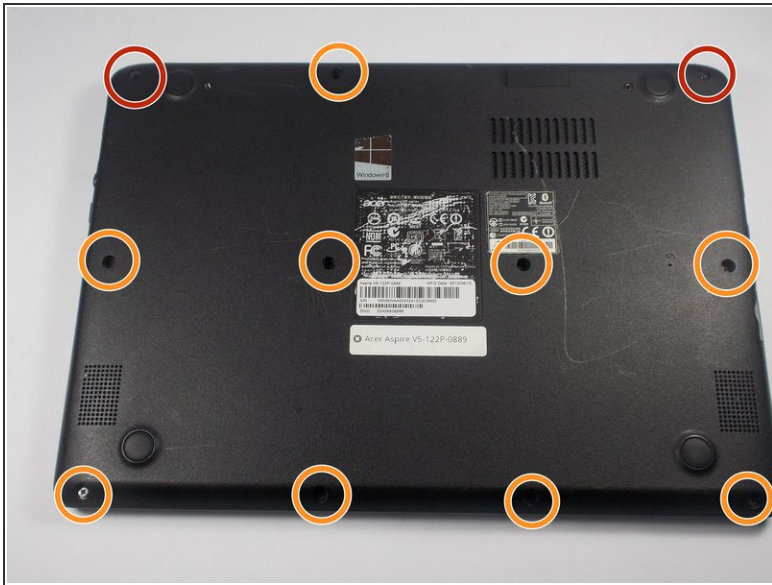
Your battery is not working? You feel like you are lost? You are wondering how could you possibly check on it or even change it? This guide will teach you how to locate the battery and how to remove it to be replaced.

---

## TOOLS:

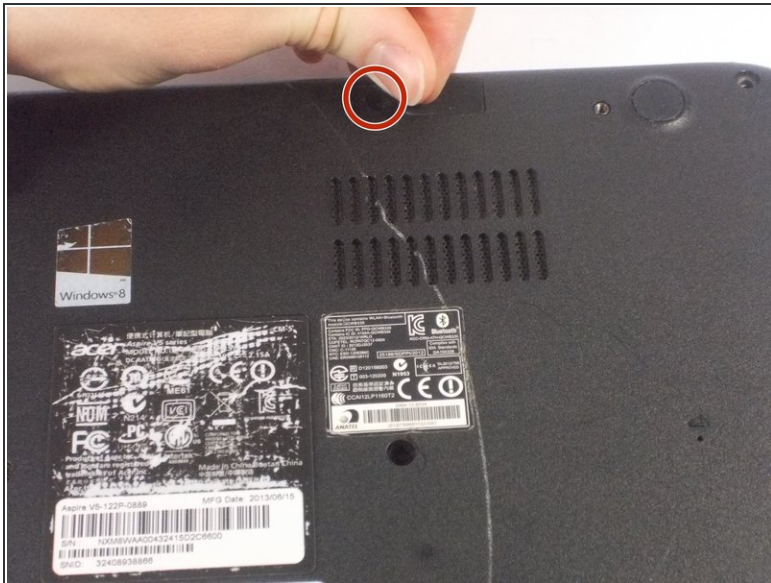
- [Phillips #0 Screwdriver](#) (1)
  - [Spudger](#) (1)
-

## Step 1 — Battery



- Start the process of removing the bottom cover of the laptop by unscrewing the 8mm screws in the top right and left corners.
- Remove the remaining 9 visible screws, which are 5mm in length.
- ⓘ Every screw in this laptop can be removed with a Phillips #0 screwdriver.

## Step 2



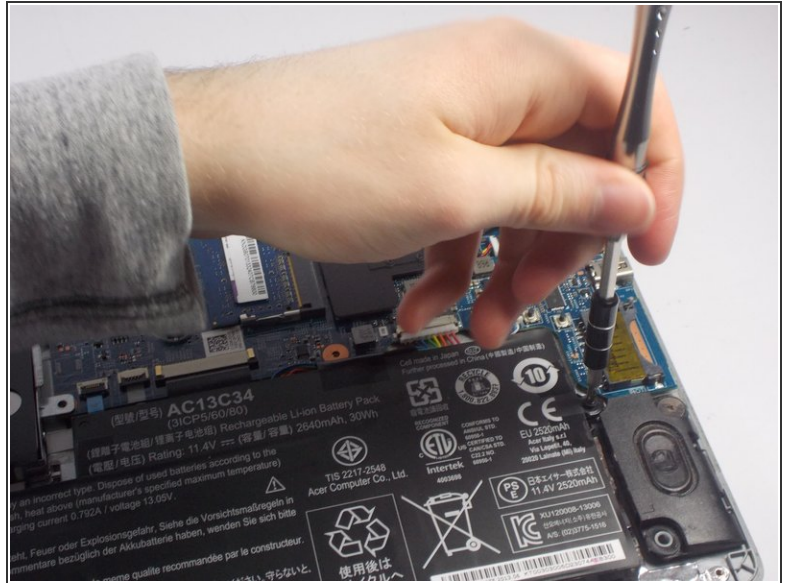
- Towards the top right corner of the laptop, there is a rubber piece covering the final screw holding the cover on, as well as a set of pins. Use your fingernail to remove this piece of rubber, and then unscrew the hidden 5mm screw.

## Step 3



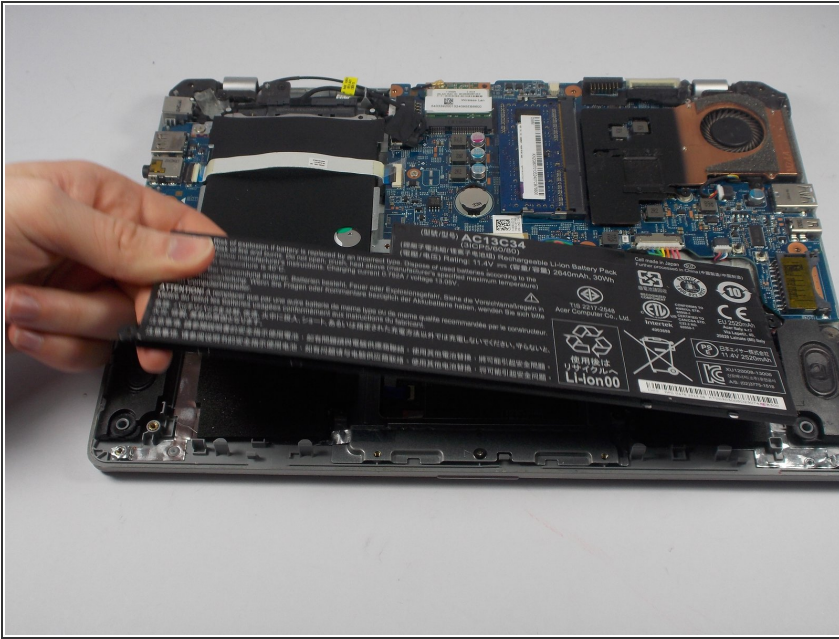
- Going around the edges of the laptop, apply light to moderate amounts of pressure away from the laptop to unseat the cover so that it can be removed. Once you have removed the cover, place it face-up in a safe place to avoid getting the inside of the cover dirty.
- ⓘ If you are having trouble unseating the cover by hand, a nylon spudger can be run around the perimeter of the laptop to help lift the cover away from the case.

## Step 4



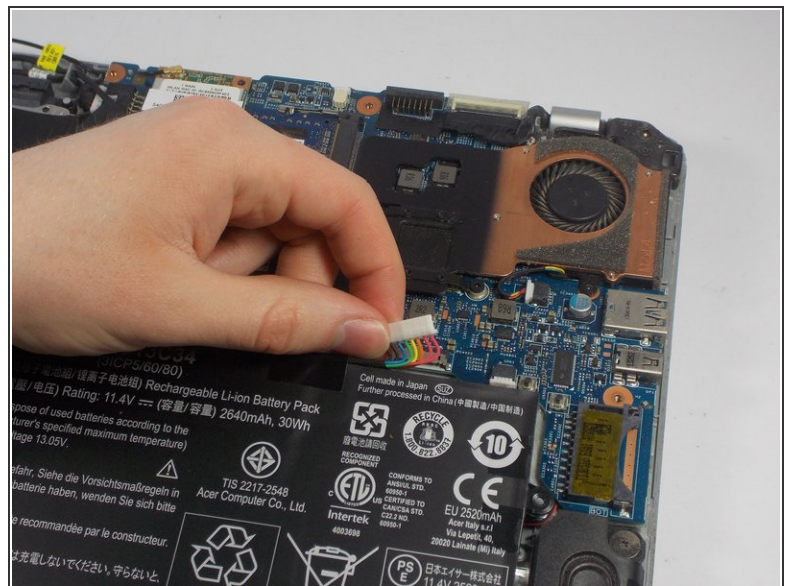
- Carefully unscrew the two 5mm screws holding the battery in place.

## Step 5



- Carefully use light upward pressure to unseat the battery from the case, but do not pull on the cord or try and completely remove the battery from the case.

## Step 6



- Finally, disconnect the battery from the motherboard by undoing the power connector. To undo the connector, simply apply light to moderate pull on the sides of the connector.

To reassemble your device, follow these instructions in reverse order.

This document was generated on 2019-09-19 03:44:33 PM (MST).

