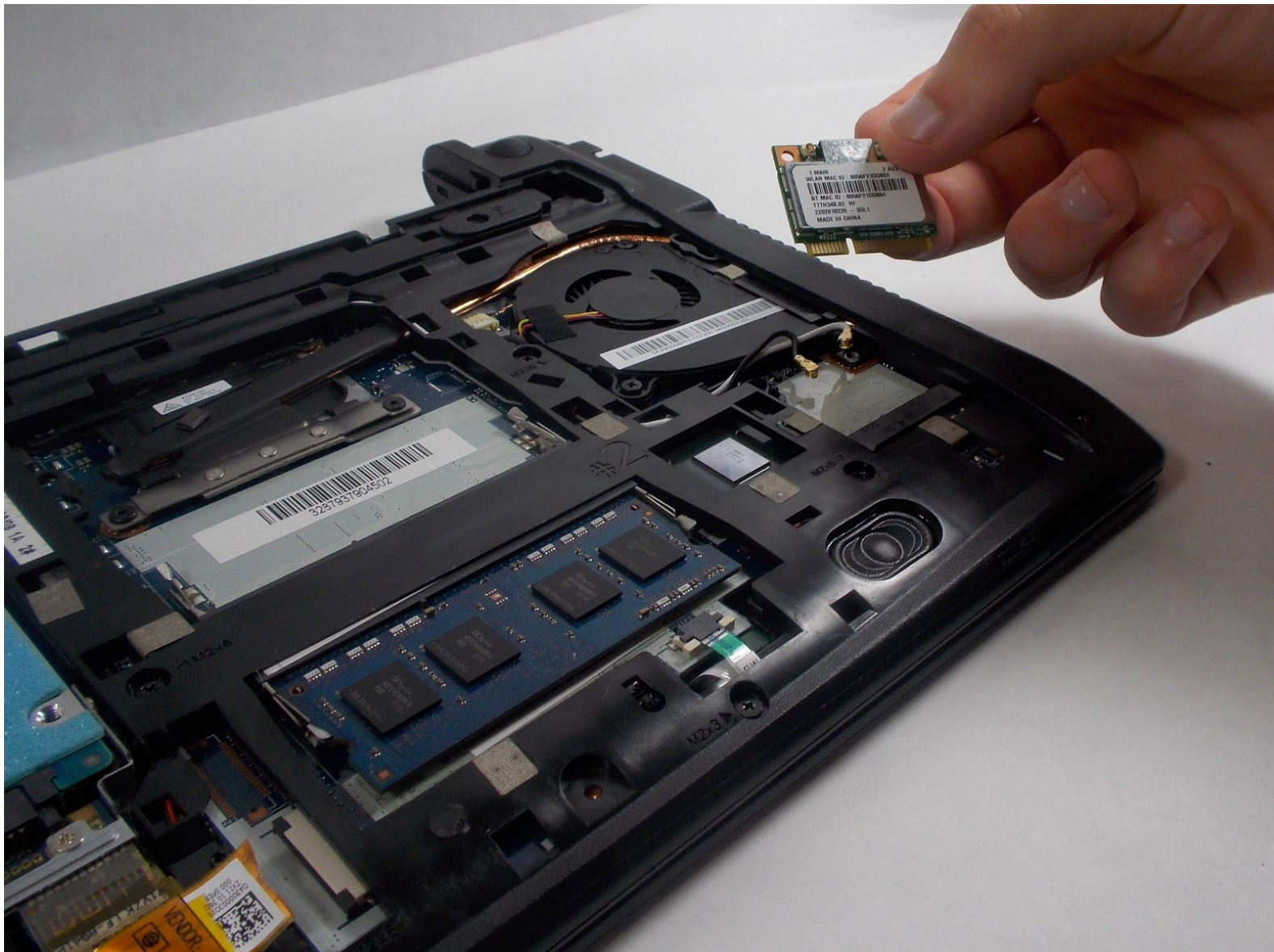




Acer Aspire V5-131-2629 Wireless Adapter Replacement

Follow this guide in order to replace the wireless adapter on the Acer Aspire V5-131-2629.

Written By: Aaron Almeida



INTRODUCTION

If your laptop is unable to view or connect to wifi, then the laptop likely has a dysfunctional wireless adapter. Follow this guide in order to replace the laptop's wireless adapter.

TOOLS:

- [iFixit Opening Tools](#) (1)
 - [Phillips #0 Screwdriver](#) (1)
 - [Spudger](#) (1)
-

Step 1 — Battery



- Carefully turn your Acer Aspire V5-131-2629 upside down, so that the battery cell is visible and nearest to you.

Step 2



- Identify the small, oval slide switch on the left hand side of the laptop, directly above the battery.

Step 3



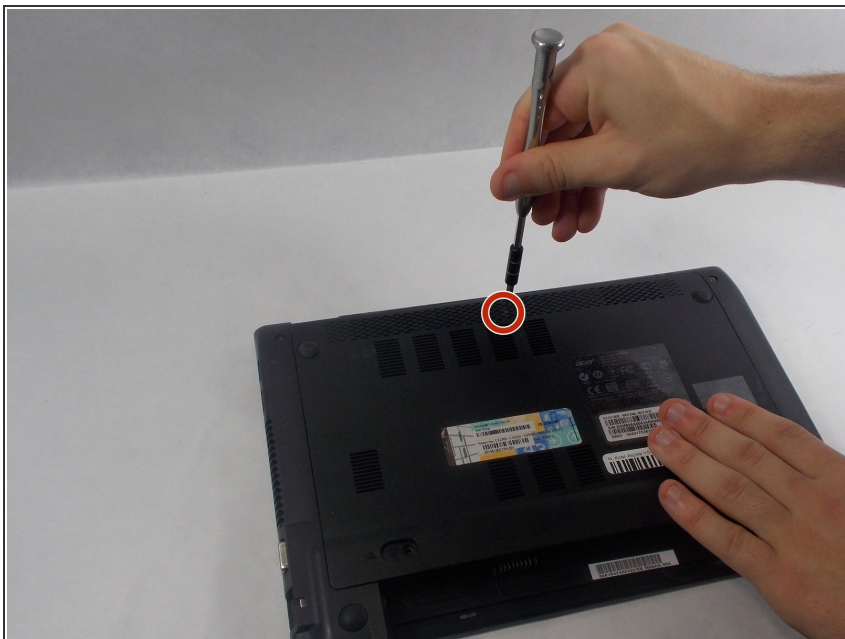
- Insert an opening tool into the hole on the right side of the oval switch. Use the opening tool to slide the switch to the right.

Step 4



- With the switch engaged to the right, firmly pull the battery out and towards yourself, parallel to your work surface.

Step 5 — Cover



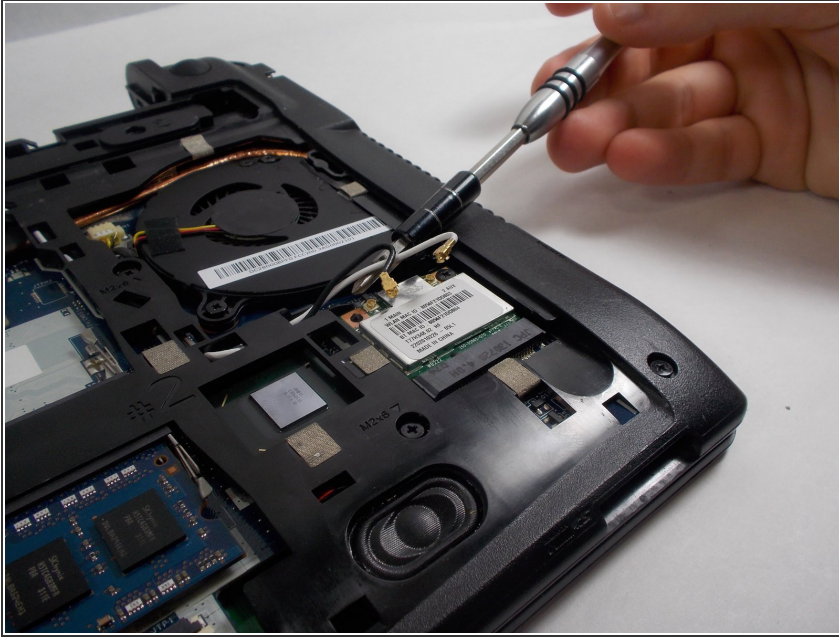
- Remove the single Phillips #0 screw from the cover on the underside of the laptop.

Step 6



- Remove the cover by sliding it outwards and remove it from the device.

Step 7 — Wireless Adapter




- Remove the black and white cables that are attached to the Wi-Fi card.

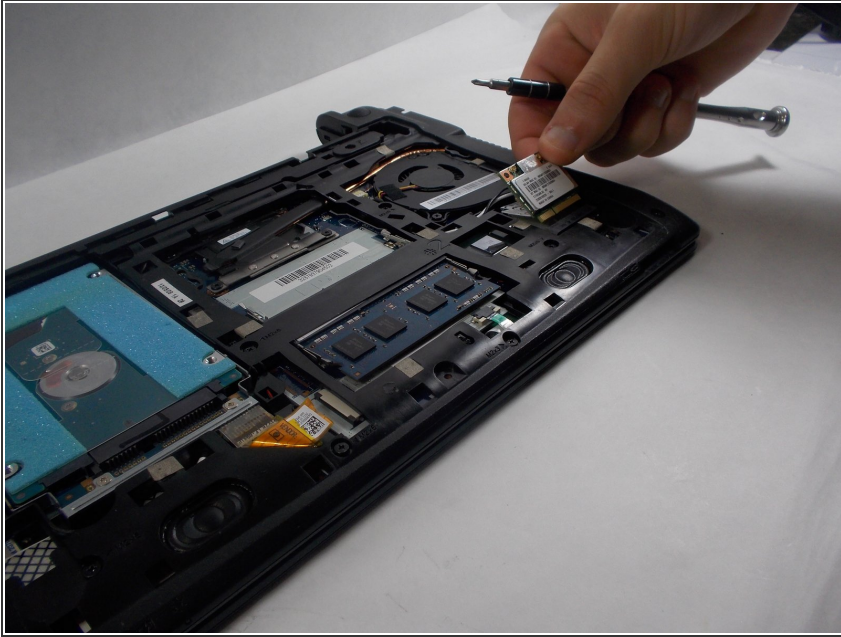
Step 8



- Remove the single Phillips screw securing the Wi-Fi card.

 The wireless adapter will pop out at a 45 degree angle.

Step 9



- Pull on the wireless adapter to remove it and replace it.

To reassemble your device, follow these instructions in reverse order.