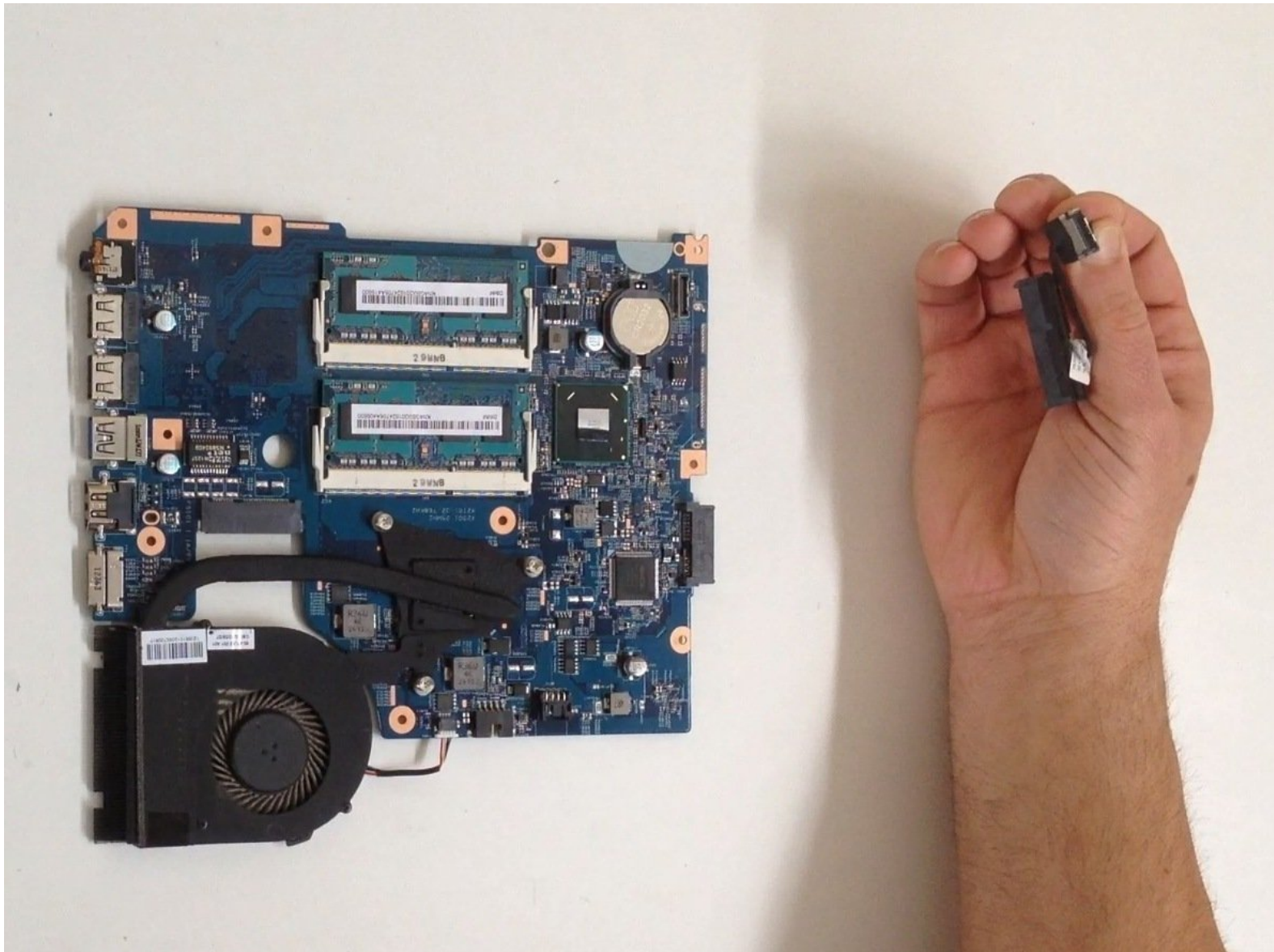




# Acer Aspire V5-571 HDD SATA Cable Replacement

Acer Aspire V5-571 HDD SATA Cable Replacement

Written By: ZFix



# INTRODUCTION

How to replace the SATA HDD Cable.

---

[video: <http://youtu.be/mrKPisD7H0U>]

---



## TOOLS:

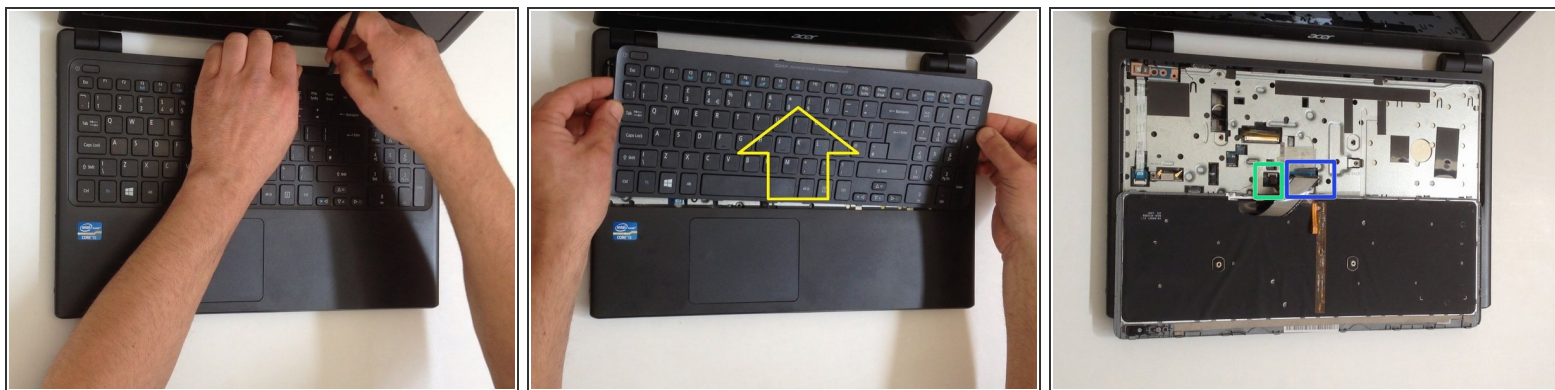
- [Phillips #0 Screwdriver](#) (1)
  - [iFixit Opening Tools](#) (1)
  - [iFixit Opening Picks set of 6](#) (1)
  - [Spudger](#) (1)
-

## Step 1 — Keyboard



- Turn off the laptop and remove the battery.
- Remove two screws securing the Keyboard.
- The Keyboard is held by two locking clips, under the battery. Use the sharp tip of a plastic tool to release the keyboard.

## Step 2

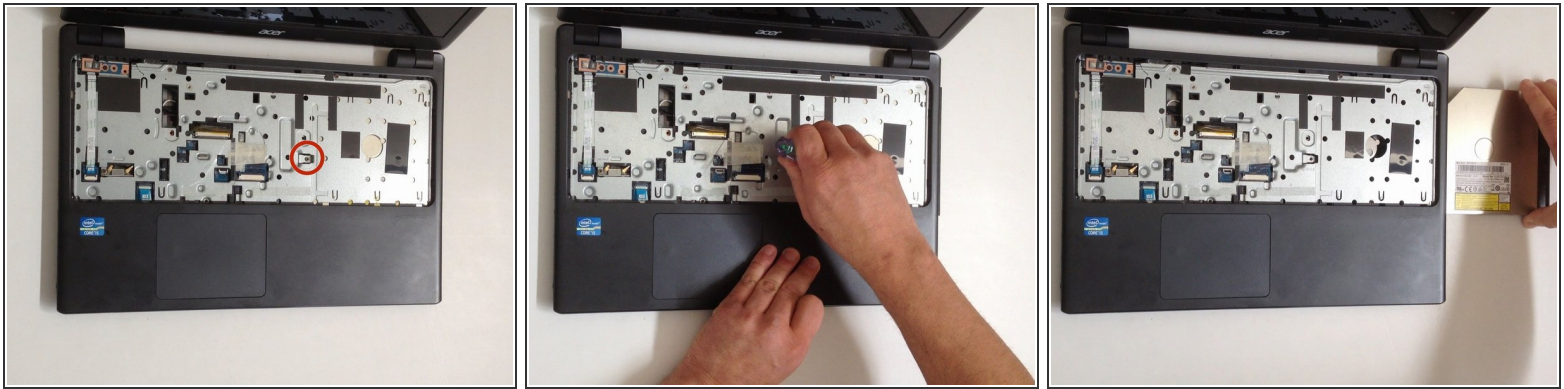


- Remove the Keyboard and disconnect the two flex cables:
  - Keyboard flex cable
  - Keyboard Light flex cable

★ [Please SUBSCRIBE to my channel ツ](#)

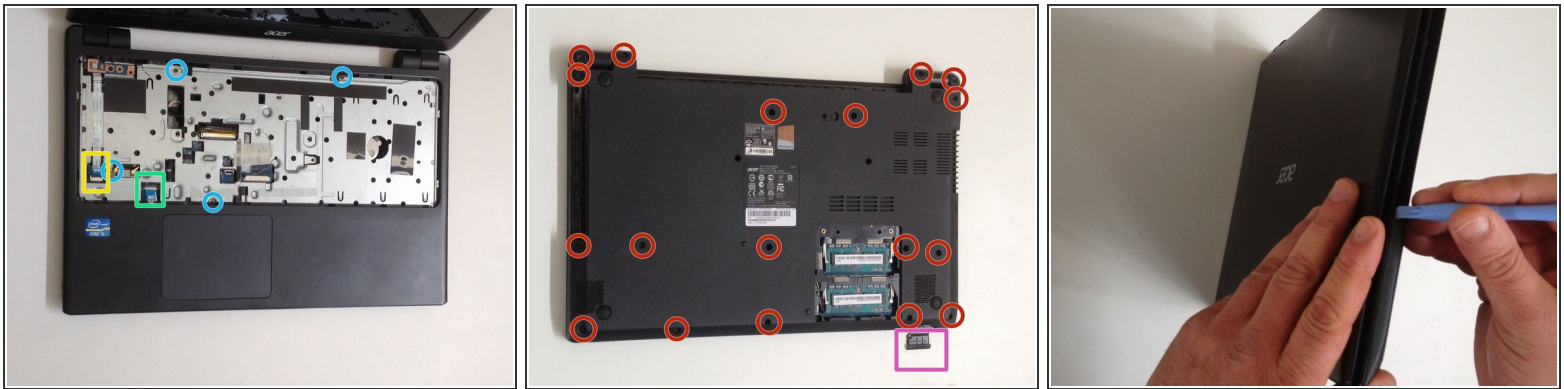


### Step 3 — Optical Drive



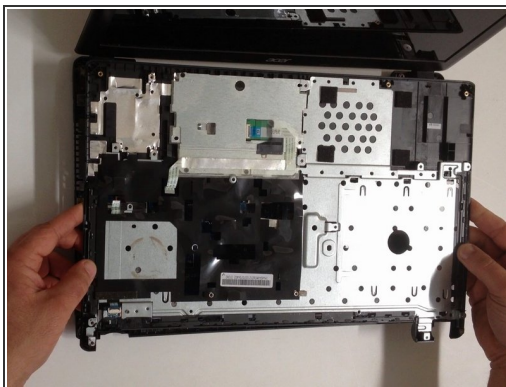
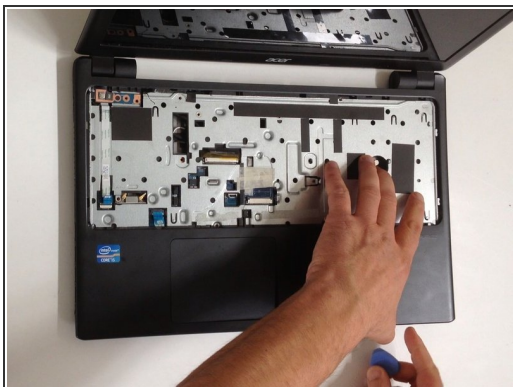
- Remove the screw securing the Optical drive and gently press the drive to show slightly as at the second pic.
- Slide the drive to the left and remove it.

### Step 4 — Upper Cover



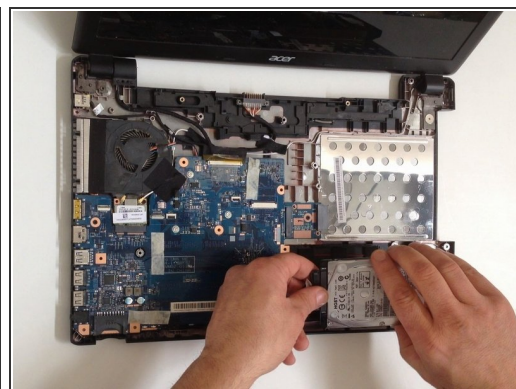
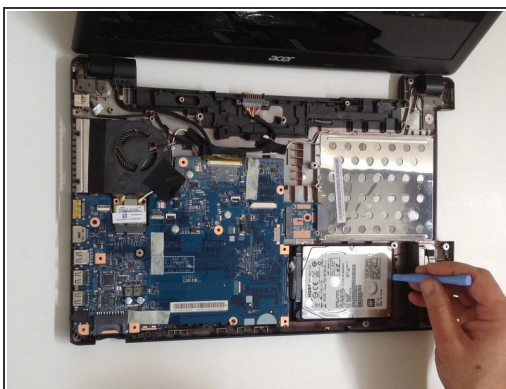
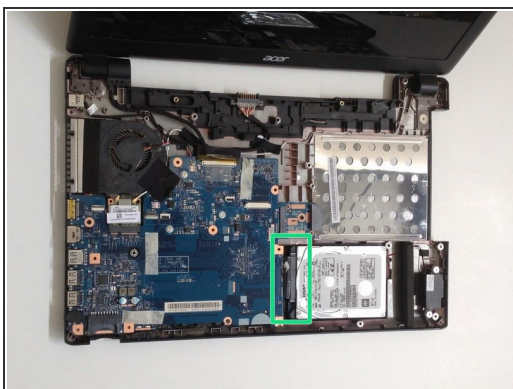
- Remove 4x phillips screws and disconnect:
  - Power On button flex cable
  - Touch pad flex cable
- Remove 18x Phillips screws from the bottom cover.
- Remove any memory SD Card from the Card reader.
- Start opening with a plastic opening tool.

## Step 5



- Carefully separate the upper cover and remove it.

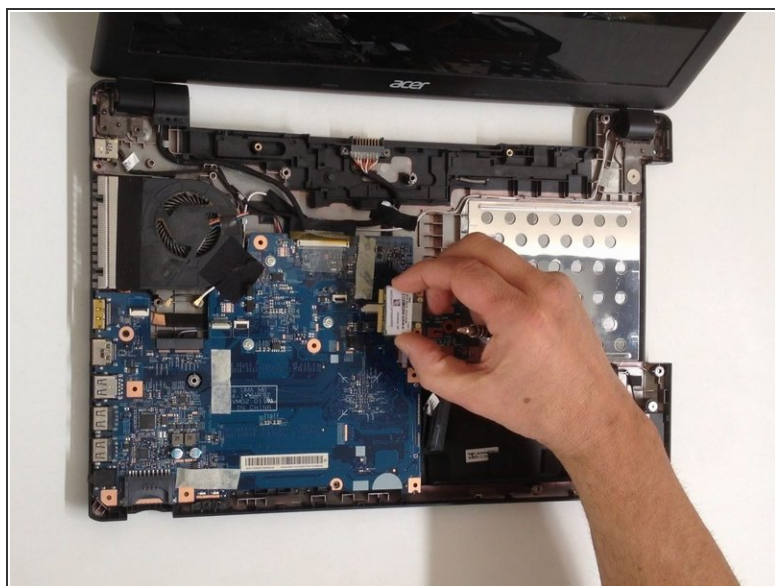
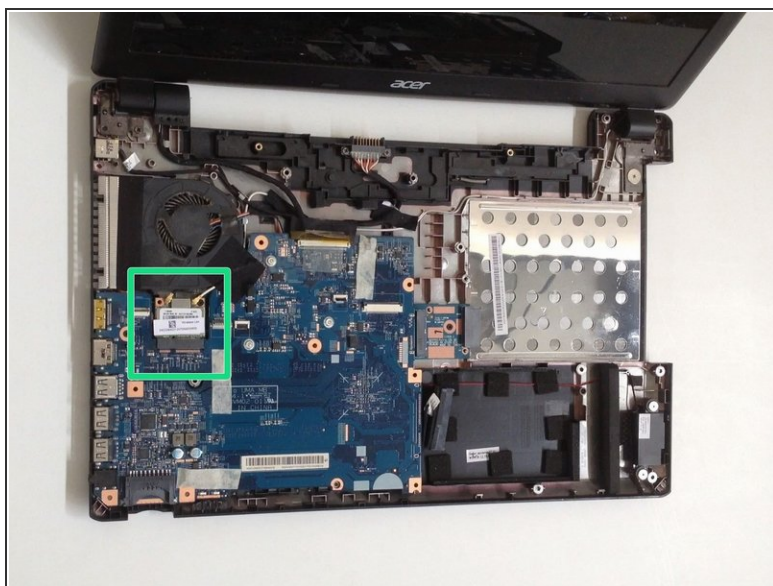
## Step 6 — HDD (Hard Disk Drive)



- Gently remove the HDD and disconnect the SATA cable from it.
- [Please SUBSCRIBE to my channel ツ](#)

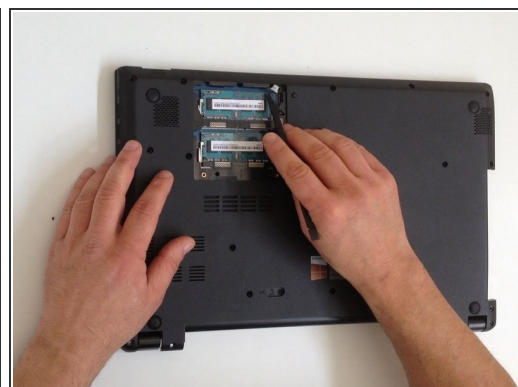
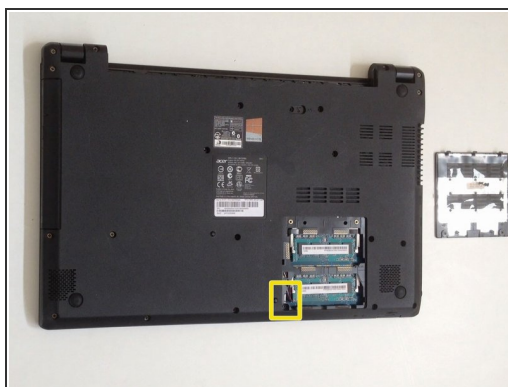
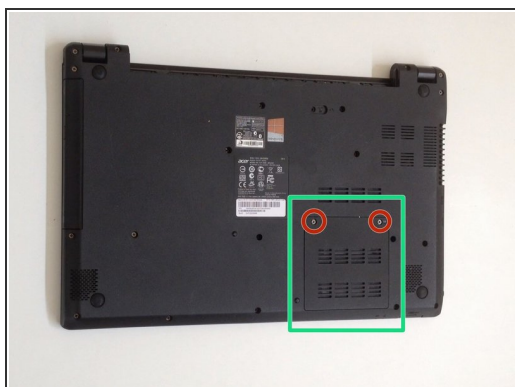


## Step 7 — Wi-Fi Half Mini PCIe card



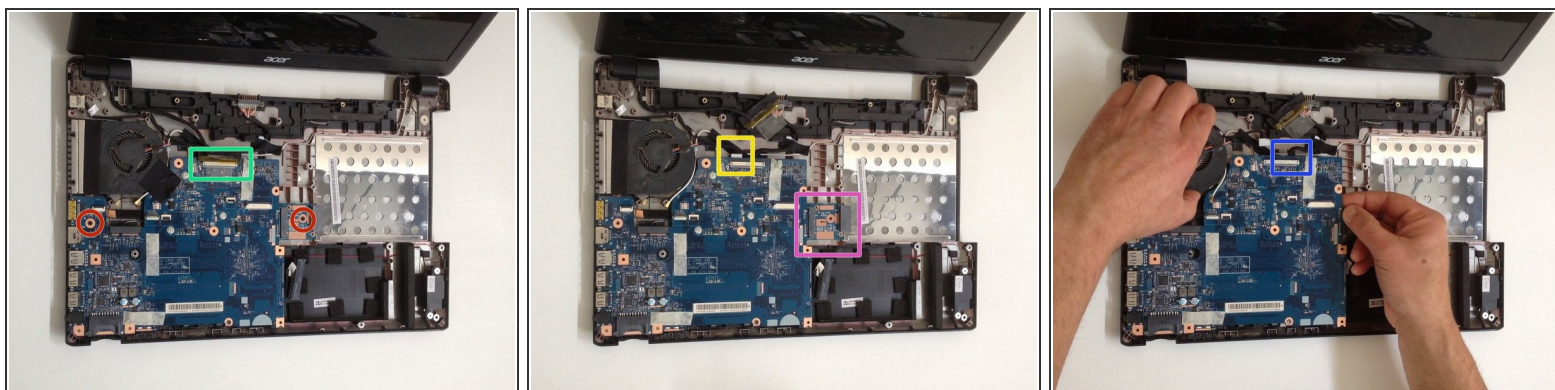
- Remove one Phillips screw, securing the WLAN card and disconnect the two coaxial antenna cables.
- Remove the Wi-Fi card.

## Step 8 — Mother Board



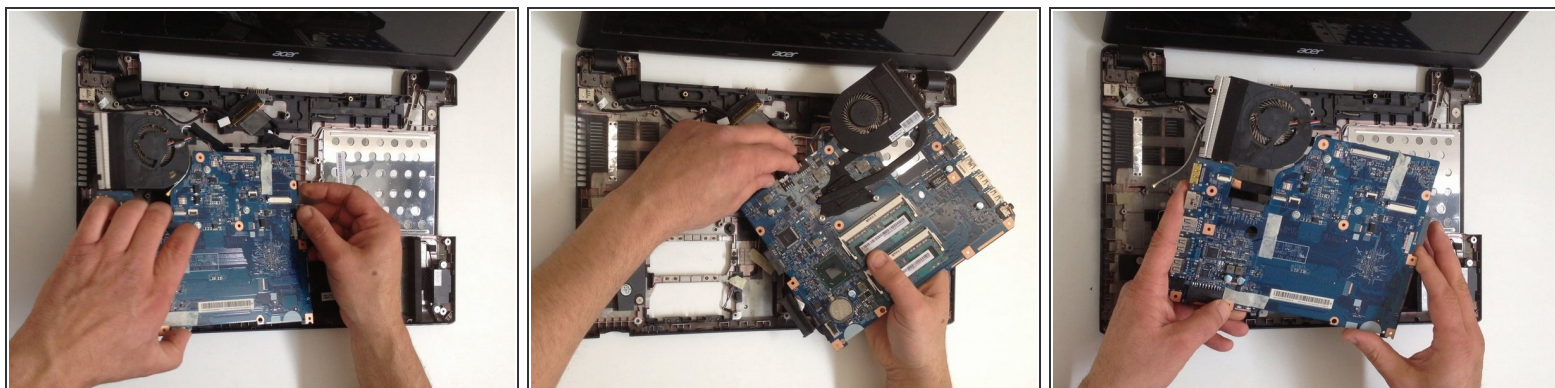
- Remove the Memory Cover.
- Disconnect the Loudspeaker cable connector.

## Step 9



- Remove two Phillips screw from the Mother board and from the Optical drive SATA adapter.
- Disconnect the LCD Display flex cable.
- Disconnect the DC Jack cable.
- Carefully remove the Optical drive SATA adapter.
- We will disconnect the battery cable when we pick up the board.

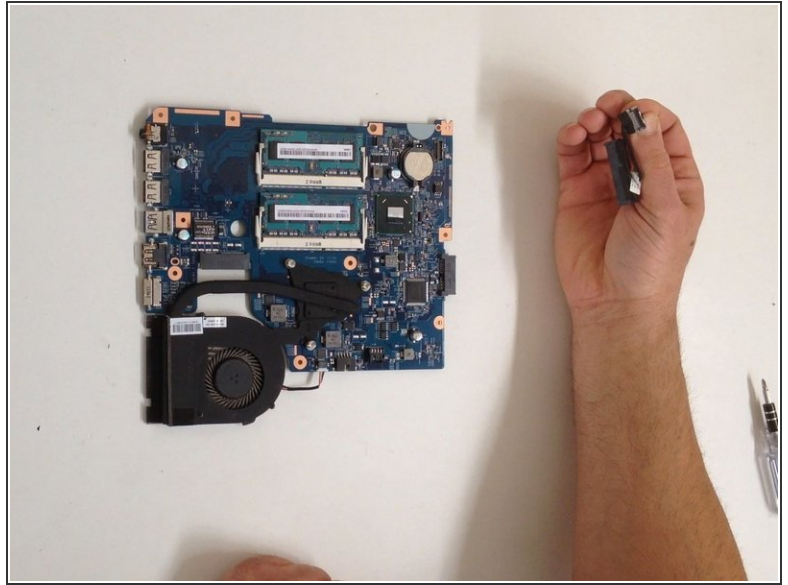
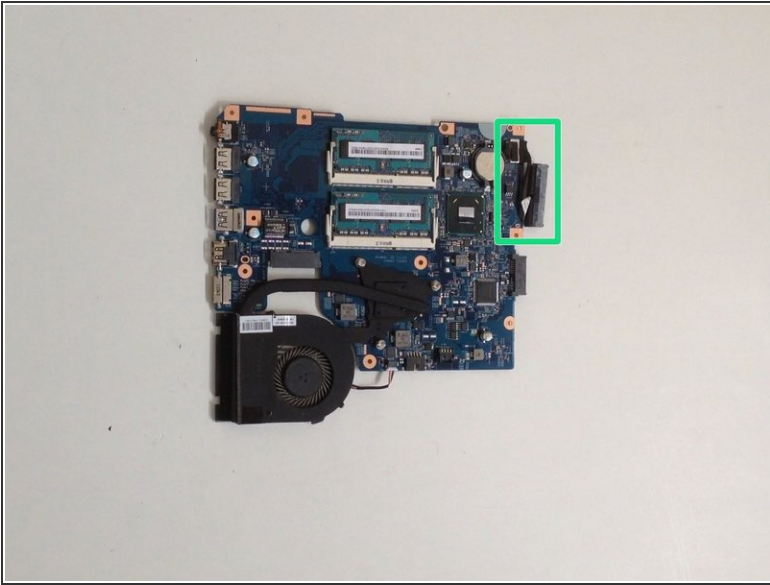
## Step 10



- Carefully pick up the Mother board and disconnect the Battery cable.



## Step 11 — HDD SATA Cable



- 13 pin SATA HDD Cable Adapter.
- .
- .
- .
- .
- .
- Did you do it successfully?

To reassemble your device, follow these instructions in reverse order.