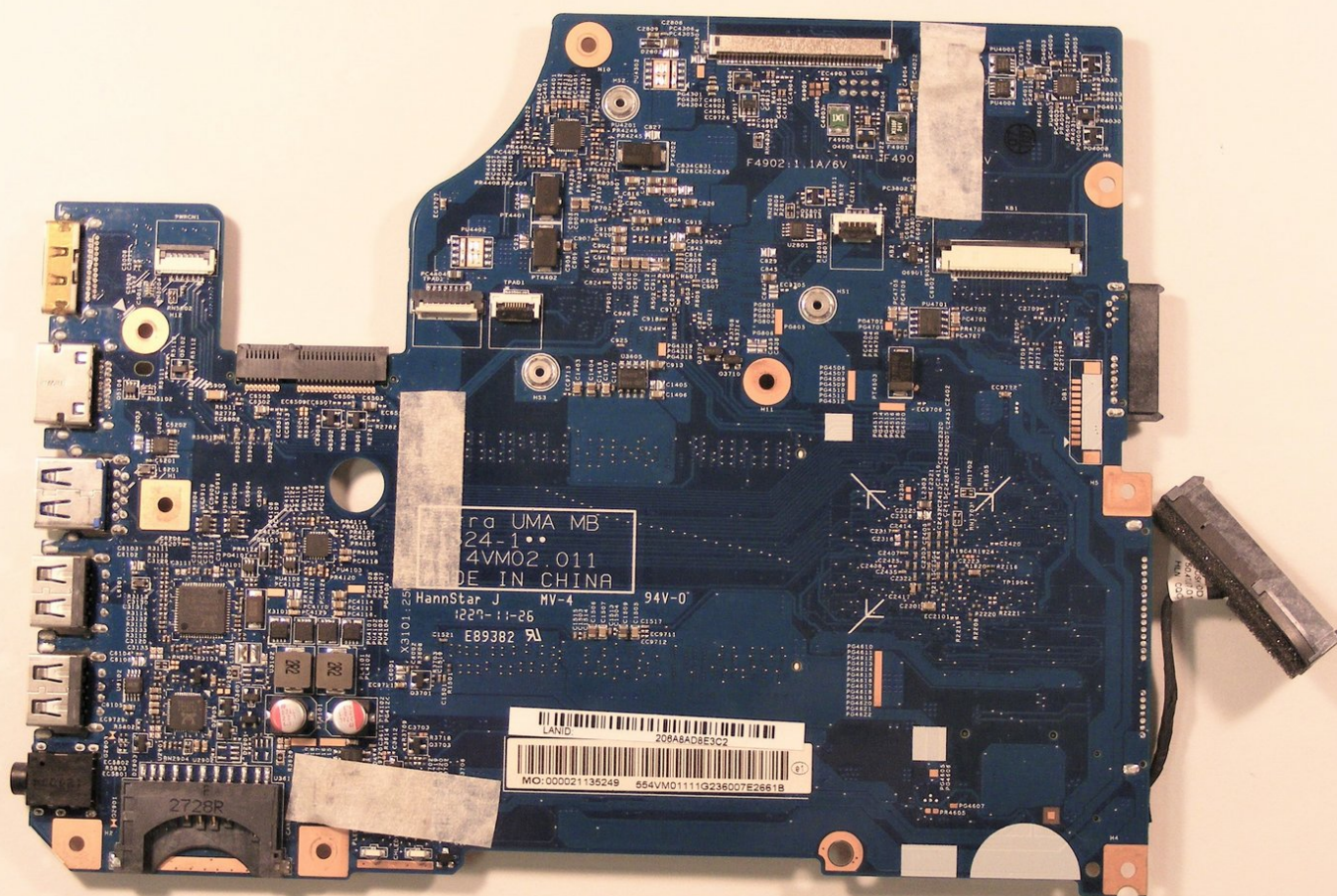




# Acer Aspire V5-571-6891 Motherboard Replacement

The motherboard is where the main processor and key components of the laptop are located and if damaged some how may need to be replaced.

Written By: Josh Focht



---

# INTRODUCTION

This guide will show how to replace the motherboard if it becomes damaged or non-functional.

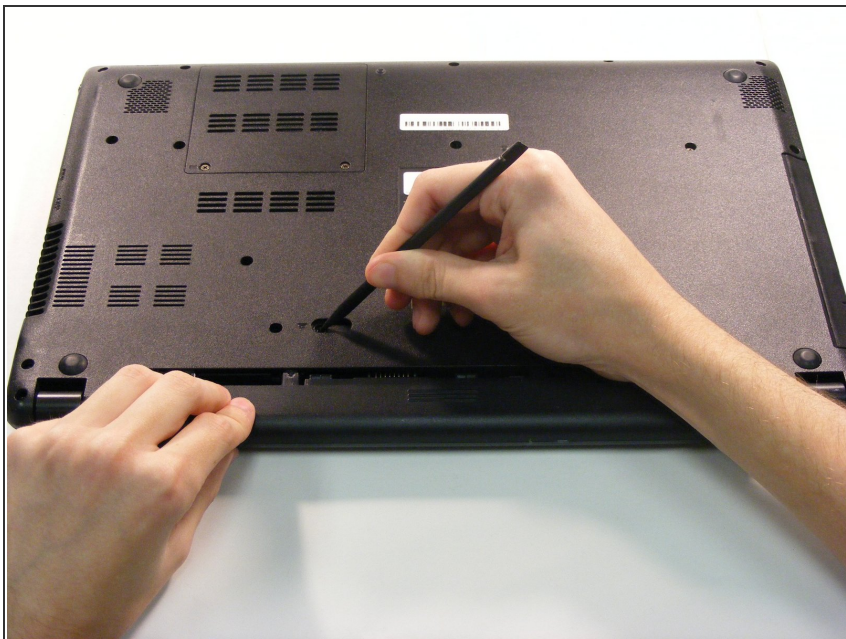
---



## TOOLS:

- [Spudger](#) (1)
  - [iFixit Opening Tools](#) (1)
  - [Phillips #1 Screwdriver](#) (1)
-

## Step 1 — Battery



- Use the pointed end of the spudger to slide the battery lock until the battery pops loose.

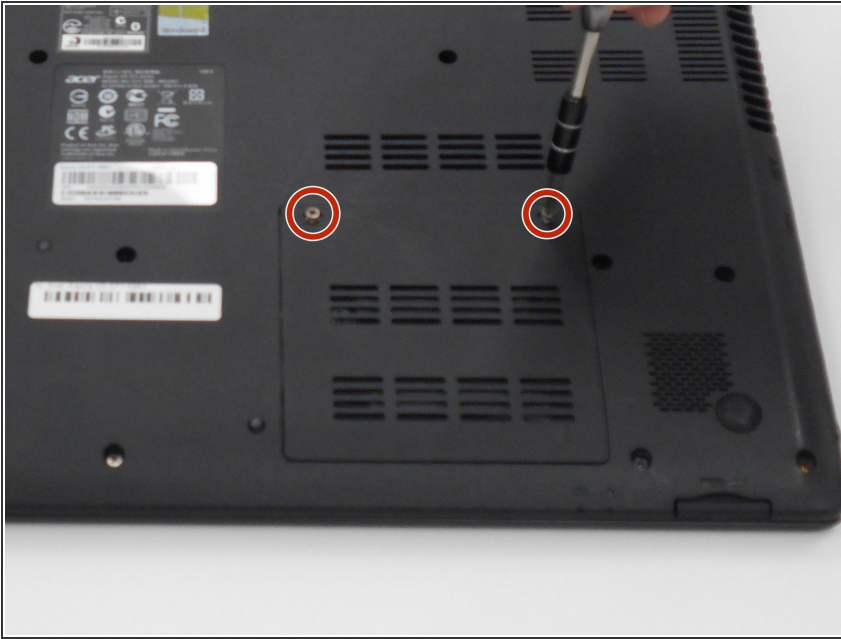
## Step 2



- Slide the battery out of the battery slot.



## Step 3 — RAM



- Unscrew the two RAM 6mm cover screws.
- Use a PH1 screw bit.

## Step 4



- Pop the RAM cover off.
- Use the plastic opening tool.

## Step 5



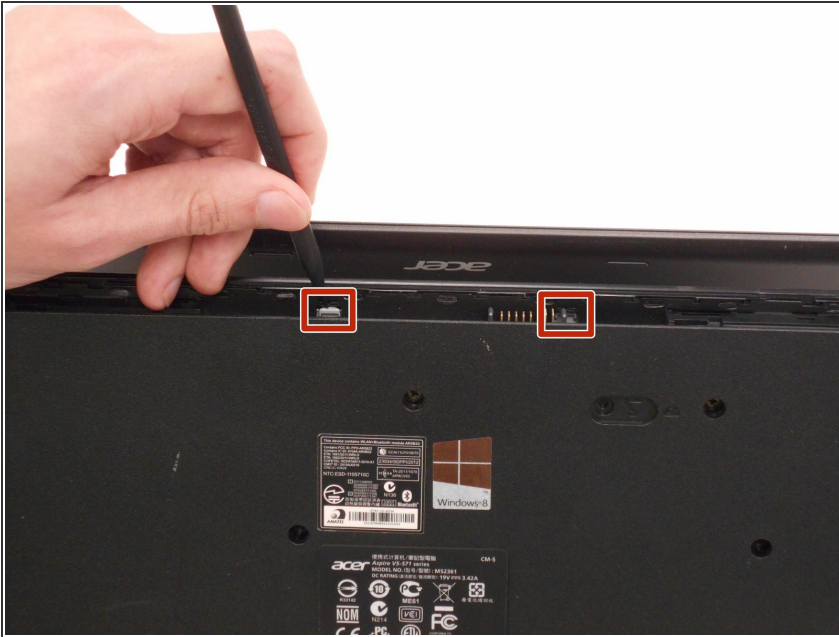
- Use either the spudger or your fingers to pinch the clips away from the RAM chip on either side of each chip.
  - The chip should pop up.
- ⚠ The clips break easily.
- Slide the RAM memory chips out of the slots.

## Step 6 — Keyboard



- Remove the two 6mm PH1 screws from the bottom of the laptop.

## Step 7



- Use the spudger, push the two tabs, located in the battery slot, through their slots to release the keyboard.
- Do this with the computer slightly open for ease.

## Step 8

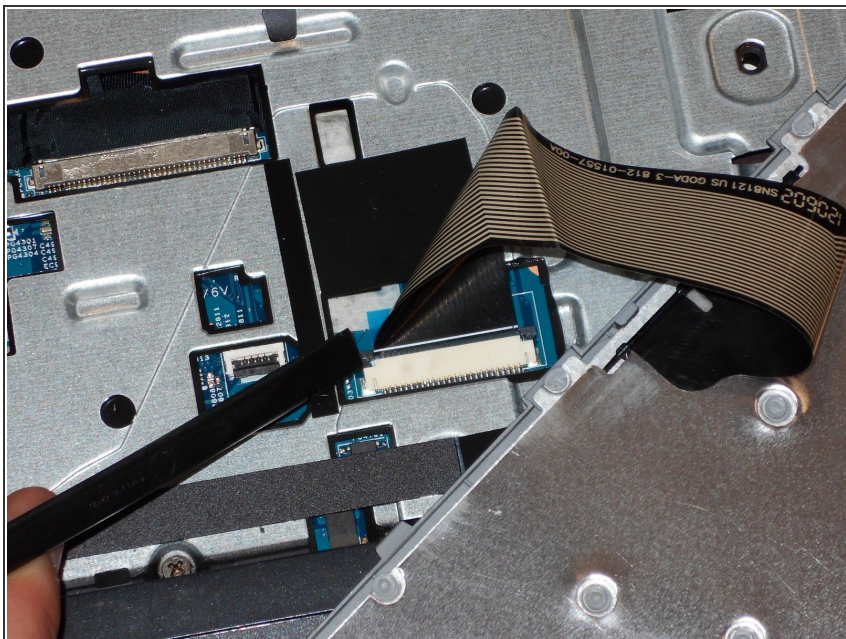


- Open the laptop.
- Start top of the keyboard and use the opening tool to pop the remaining tabs around the keyboard loose.
- The keyboard can be flipped onto its face once removed.

This document was generated on 2019-10-19 11:00:33 PM (MST).

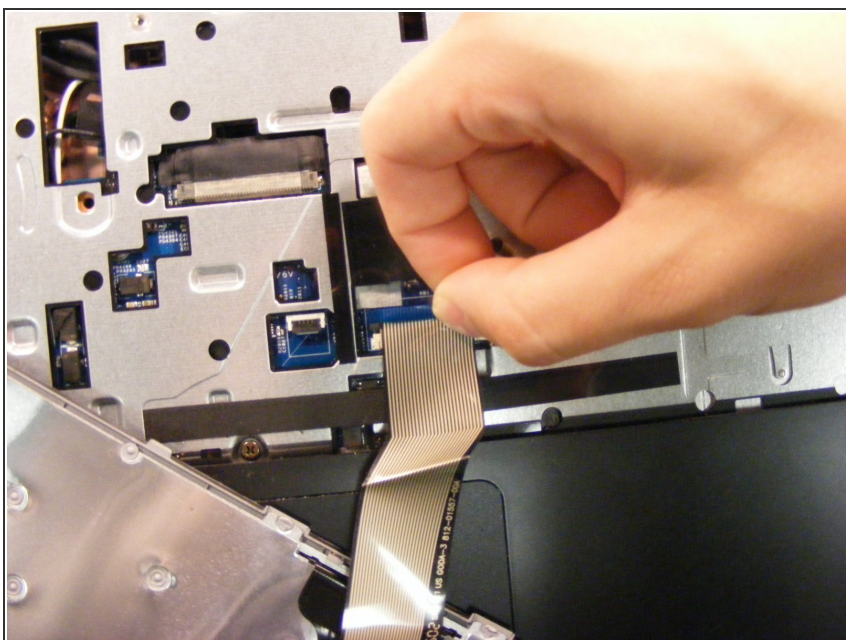


## Step 9



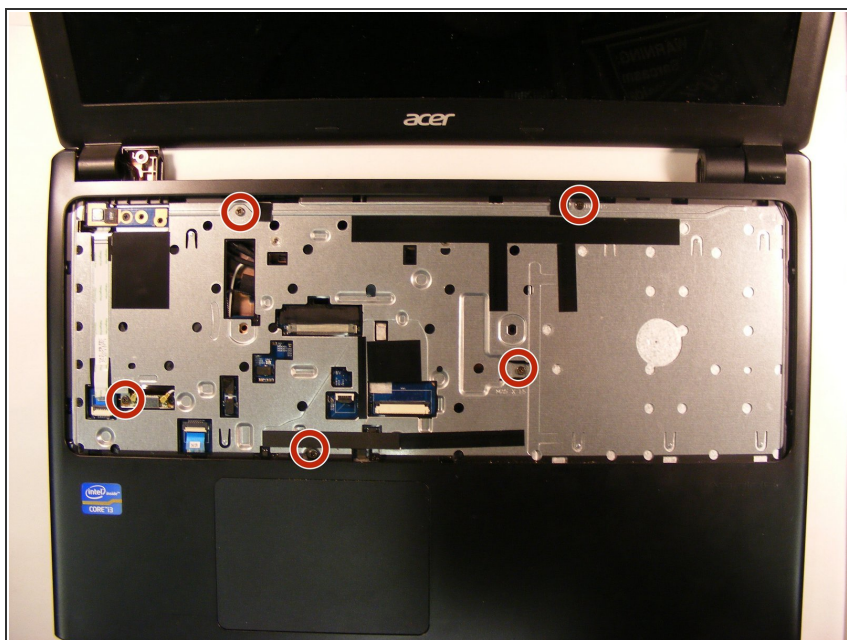
- Use the spudger and slide the grey tabs on either side of the keyboard wires away from the white plastic.

## Step 10



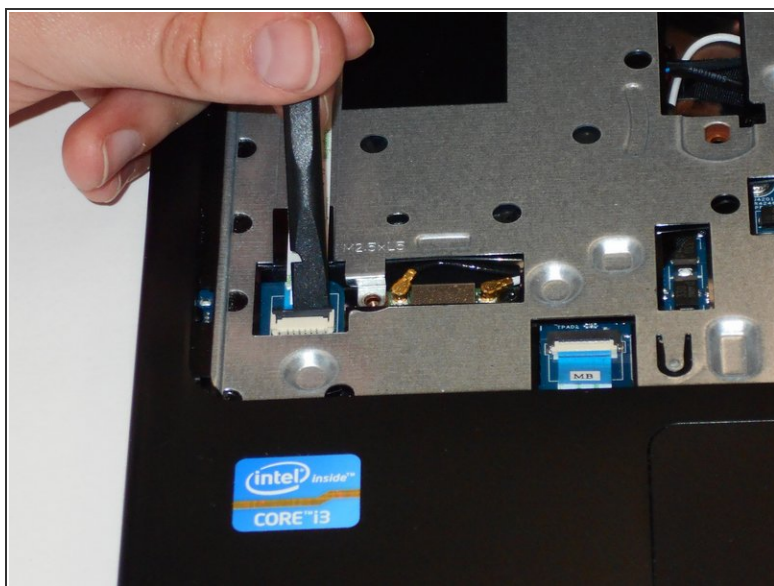
- Disconnect the keyboard by pulling the blue tape on the wire strip.

## Step 11 — Hard Disk Drive (HDD)



- Remove the five 6mm PH1 screws beneath the keyboard.

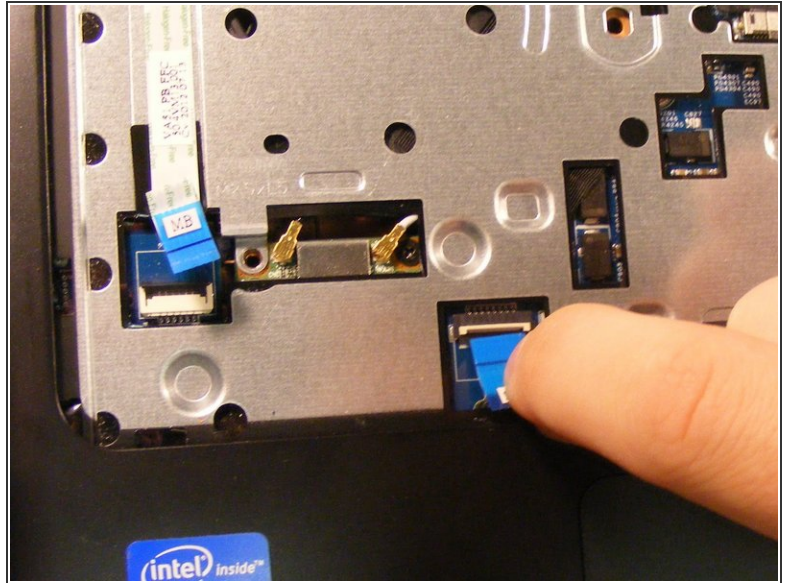
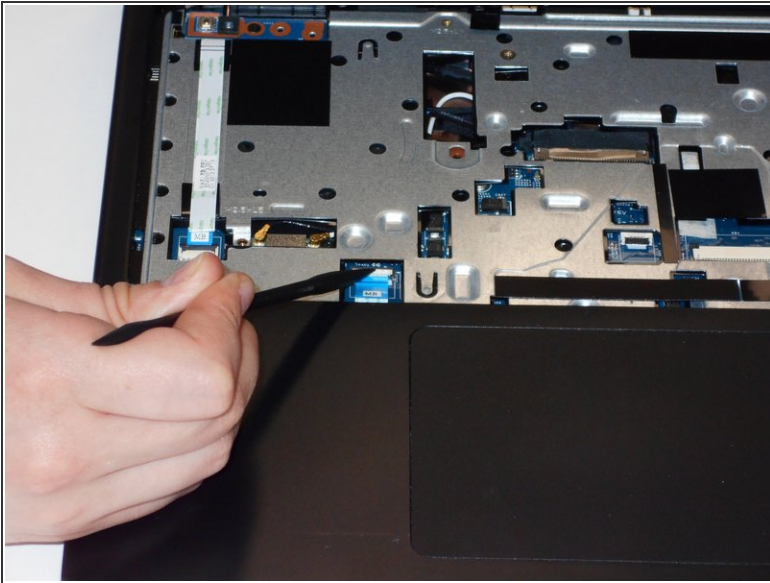
## Step 12



- Use the spudger to pop the gray tab up and away from the far left wire strip.
- Disconnect the wire strip by pulling the blue tab loose.

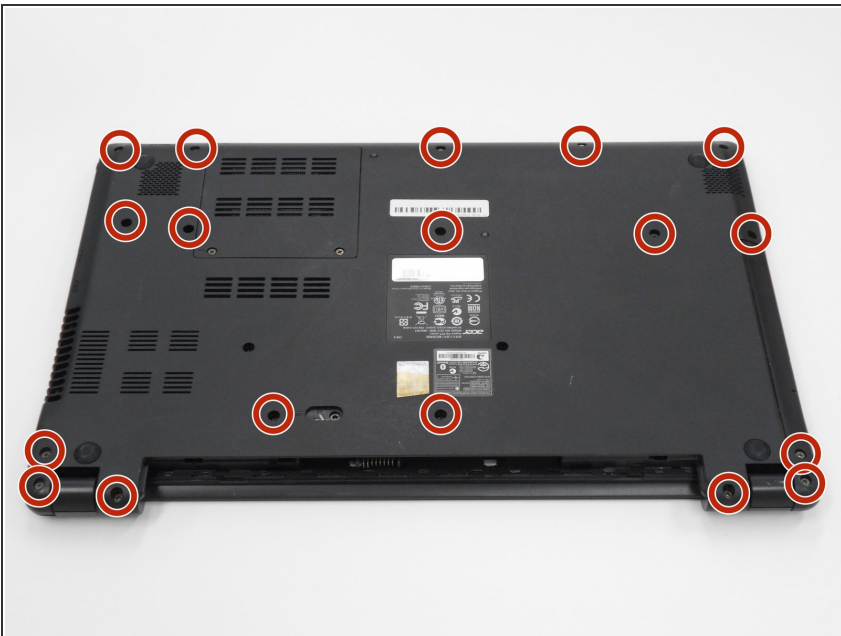


## Step 13



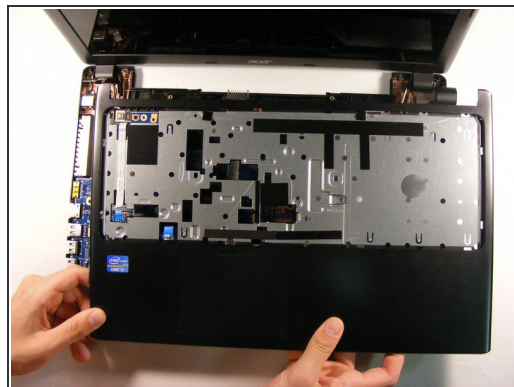
- Use the spudger to pop the white tab up away from the wire strip located at the top left corner of the mouse pad.
- Disconnect the wire strip by pulling the blue tab.

## Step 14



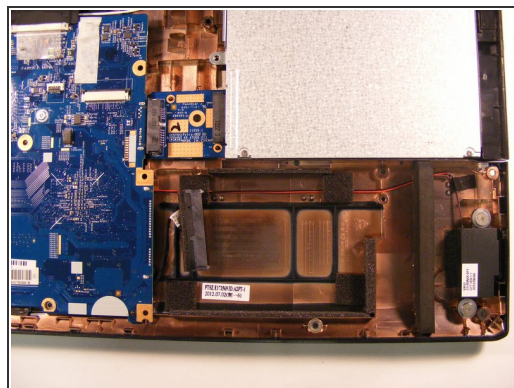
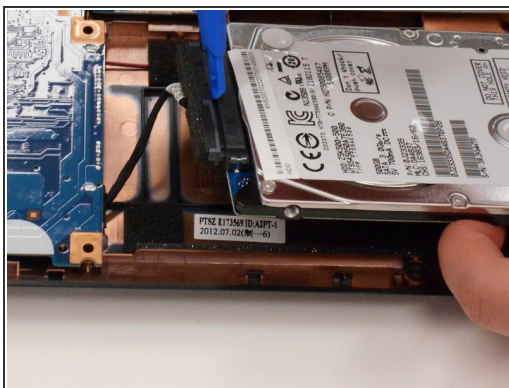
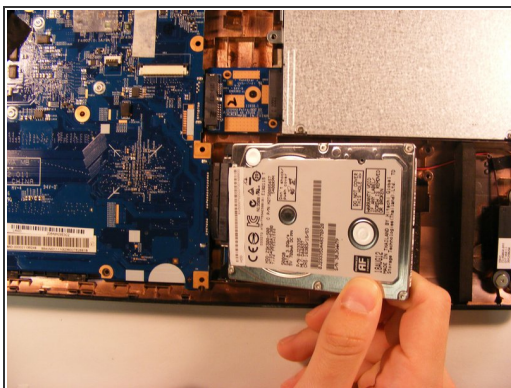
- Close the laptop.
- Remove the remaining 18 6mm PH1 screws from the bottom cover of the laptop.

## Step 15



- Use the opening tool to separate the back of the laptop from the inside cover.
- Open the computer and remove the inside cover.

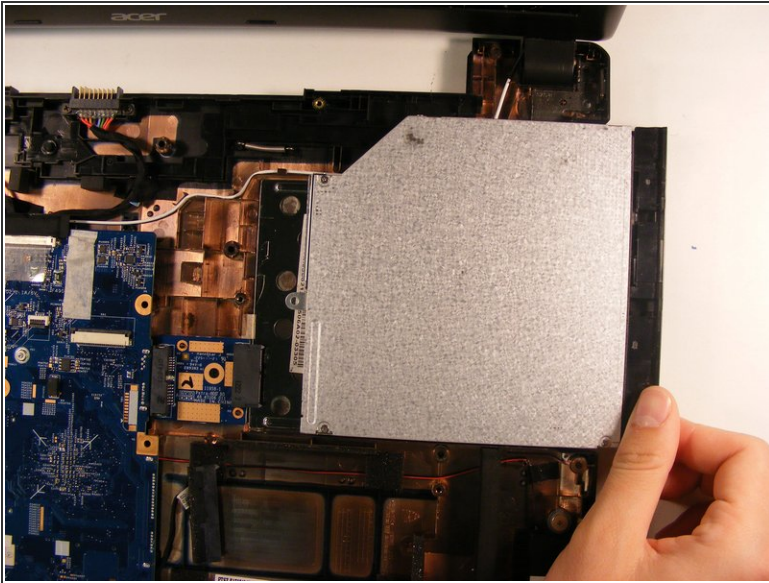
## Step 16



- Lift the HDD out of the base and use the opening tool to disconnect the HDD from the motherboard wire.

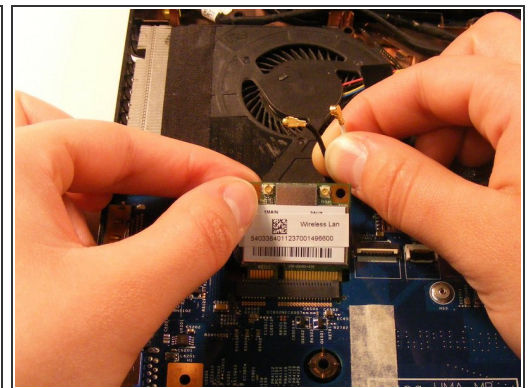
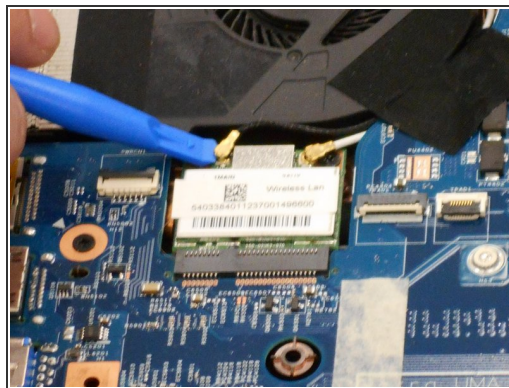
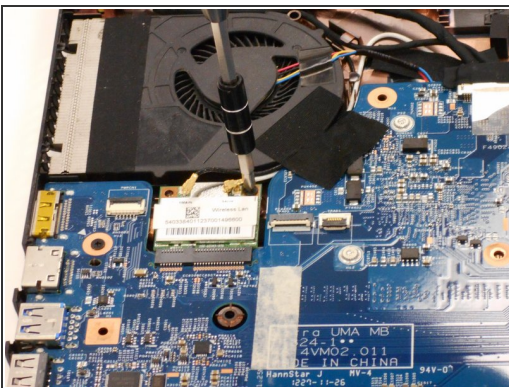


## Step 17 — CPU Fan



- Slide the optical disc drive out of the slot to disconnect it from the motherboard.
- Unscrew the main 3.5mm PH1 screw from the motherboard.

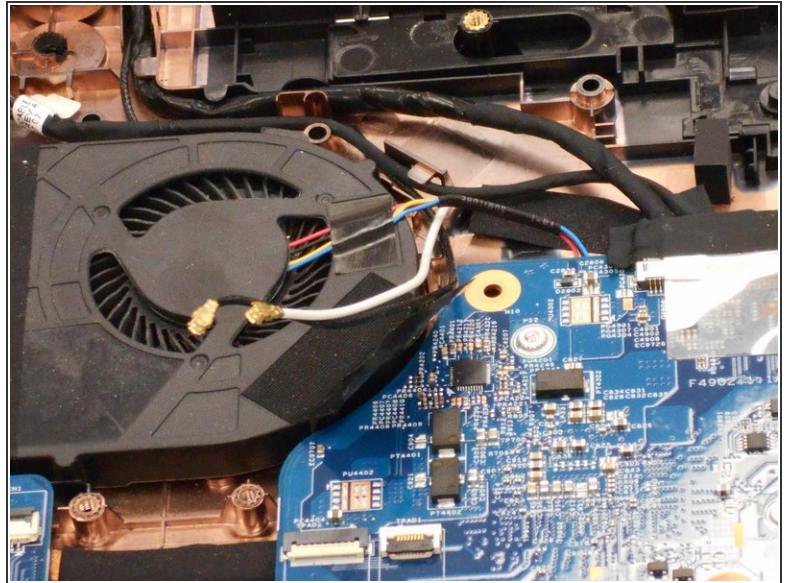
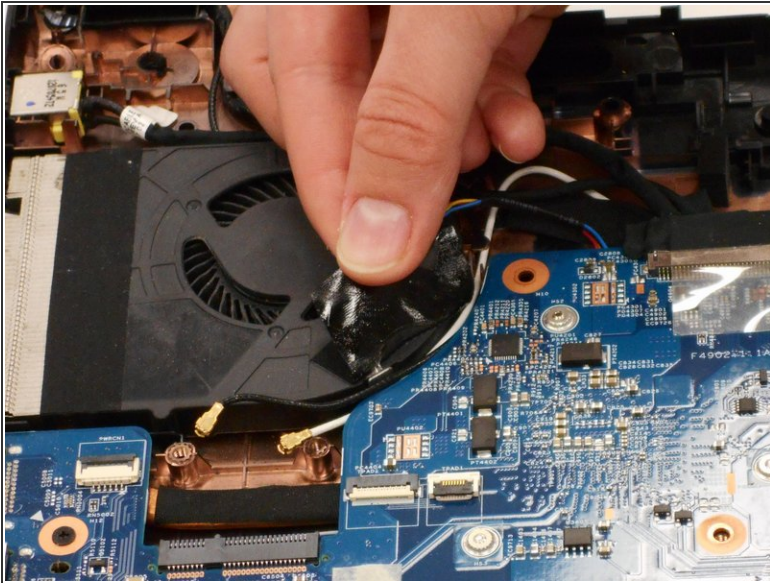
## Step 18



- Unscrew the 3.5mm PH1 screw from the Wireless Lan chip.
- Use the opening tool to pop both wires off of the Wireless Lan chip.
- Pull the Wireless Lan Chip to remove it from the motherboard.

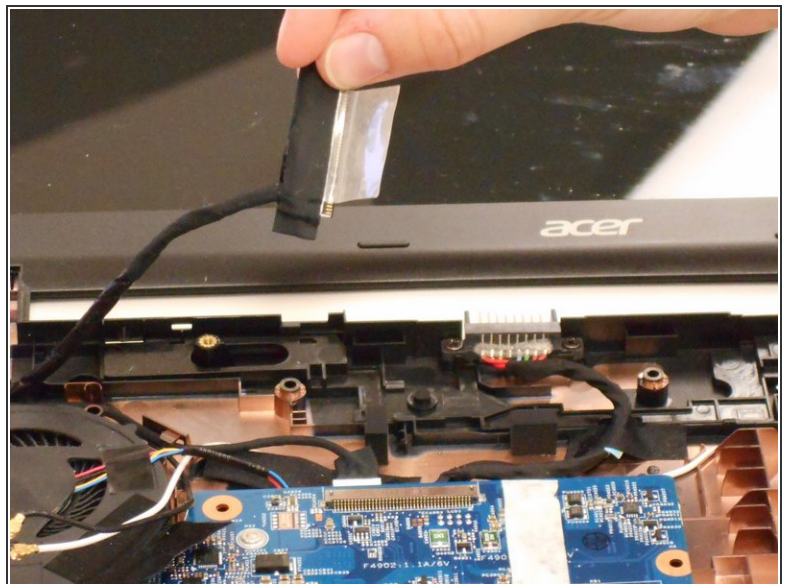
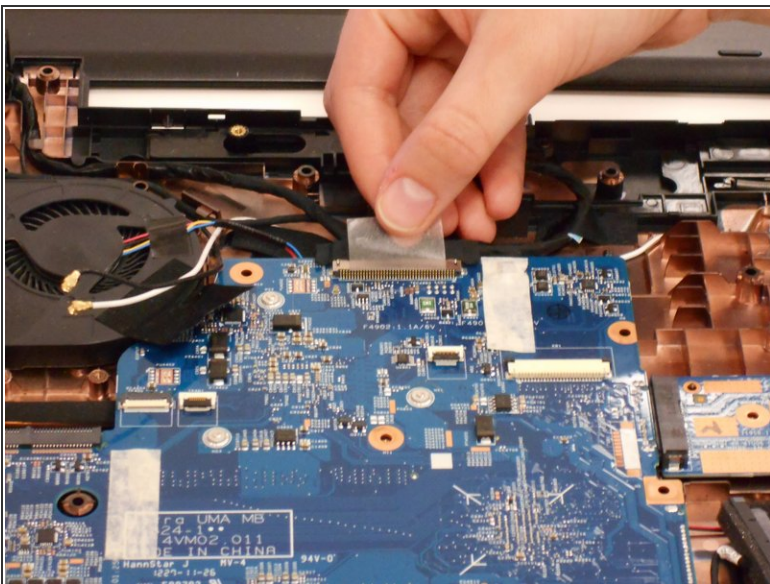


## Step 19



- Pull the tape covering the wires for the Wireless Lan chip up.
- Pull the black and white wires loose.

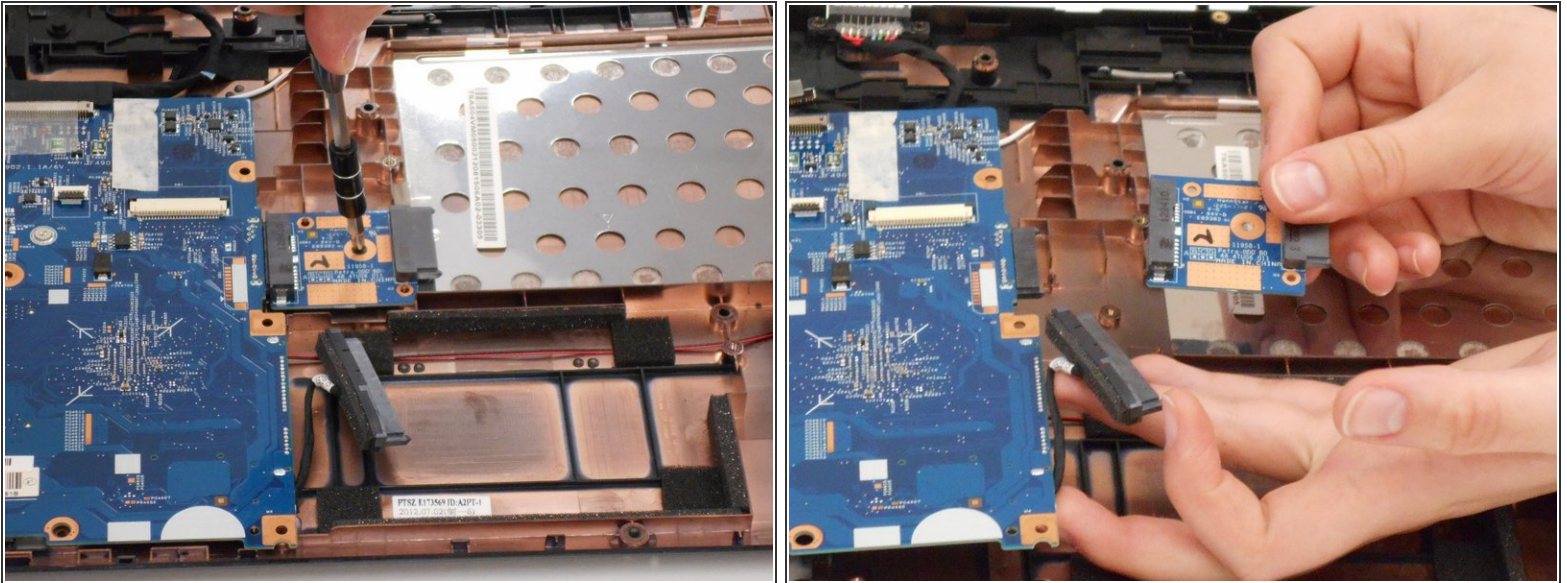
## Step 20



- Pull up the tape securing the optical wires to the motherboard.
- Disconnect the wire plug-in from the motherboard.

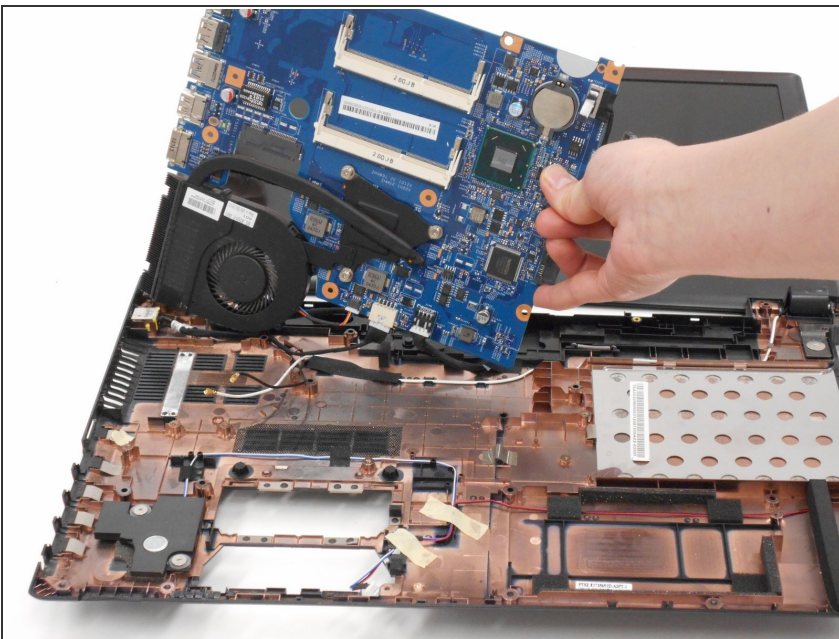


## Step 21



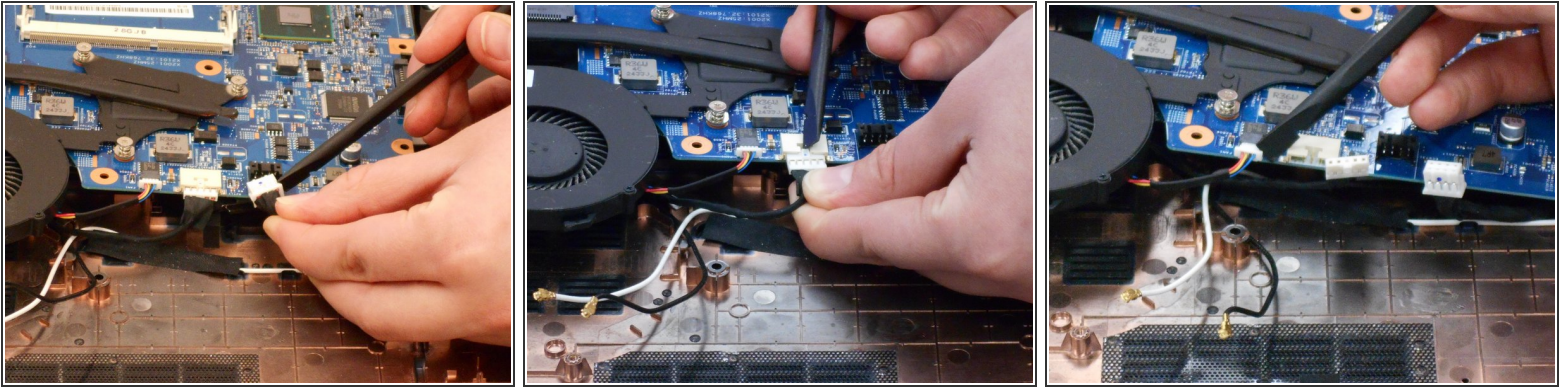
- Unscrew the 3.5mm PH1 screw securing the optical disk drive to motherboard connector.
- Pull the connector to disconnect it from the motherboard.

## Step 22



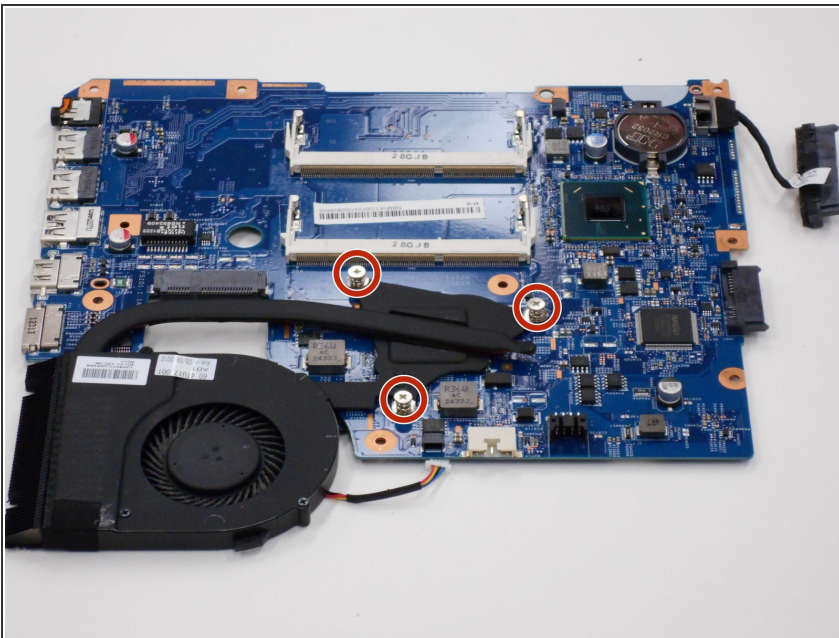
- Flip the motherboard up towards the screen to access the underside.
- ⚠ There are still wires connected to the motherboard.

## Step 23



- Use the spudger to disconnect the remaining three wires from the motherboard.
- Once the wires are disconnected, the motherboard is completely disconnected from the laptop frame.

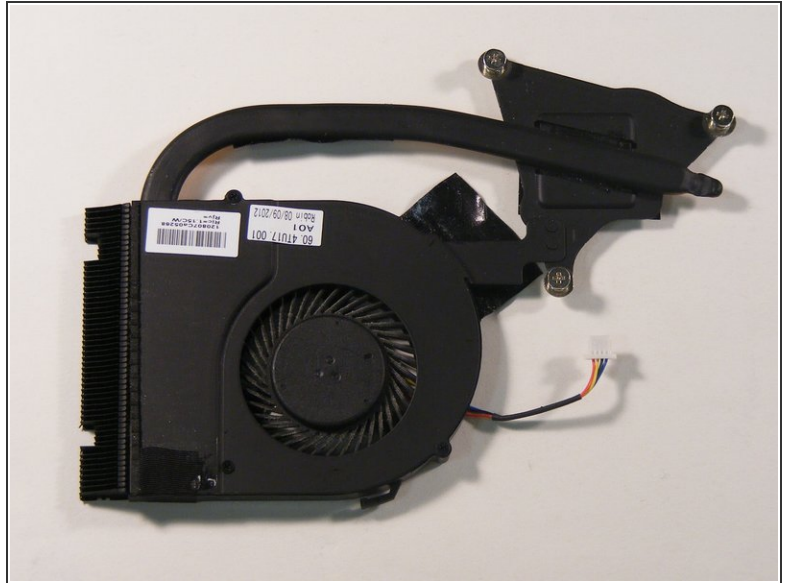
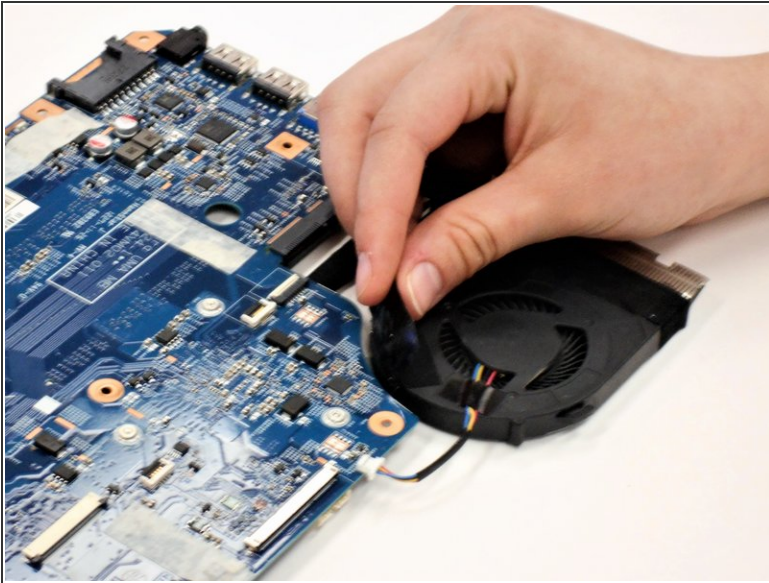
## Step 24



- Unscrew the three PH1 screws connecting the CPU fan to the motherboard.
- ⓘ The three screws are permanently attached to the CPU fan assembly.

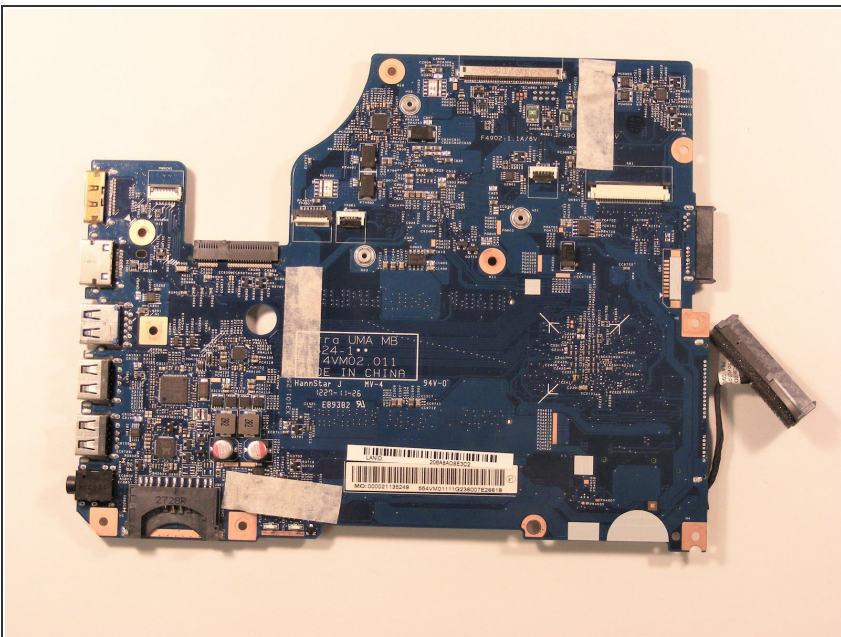


## Step 25



- On the side opposite the CPU fan screws, pull loose the tape securing the fan assembly to the motherboard.
  - ☑ This is the same tape that covered the Wireless Lan chip black and white wires.
- The CPU fan can now be separated from the motherboard.

## Step 26 — Motherboard



- The motherboard can be replaced once disconnected from the CPU cooling fan.

To reassemble your device, follow these instructions in reverse order.