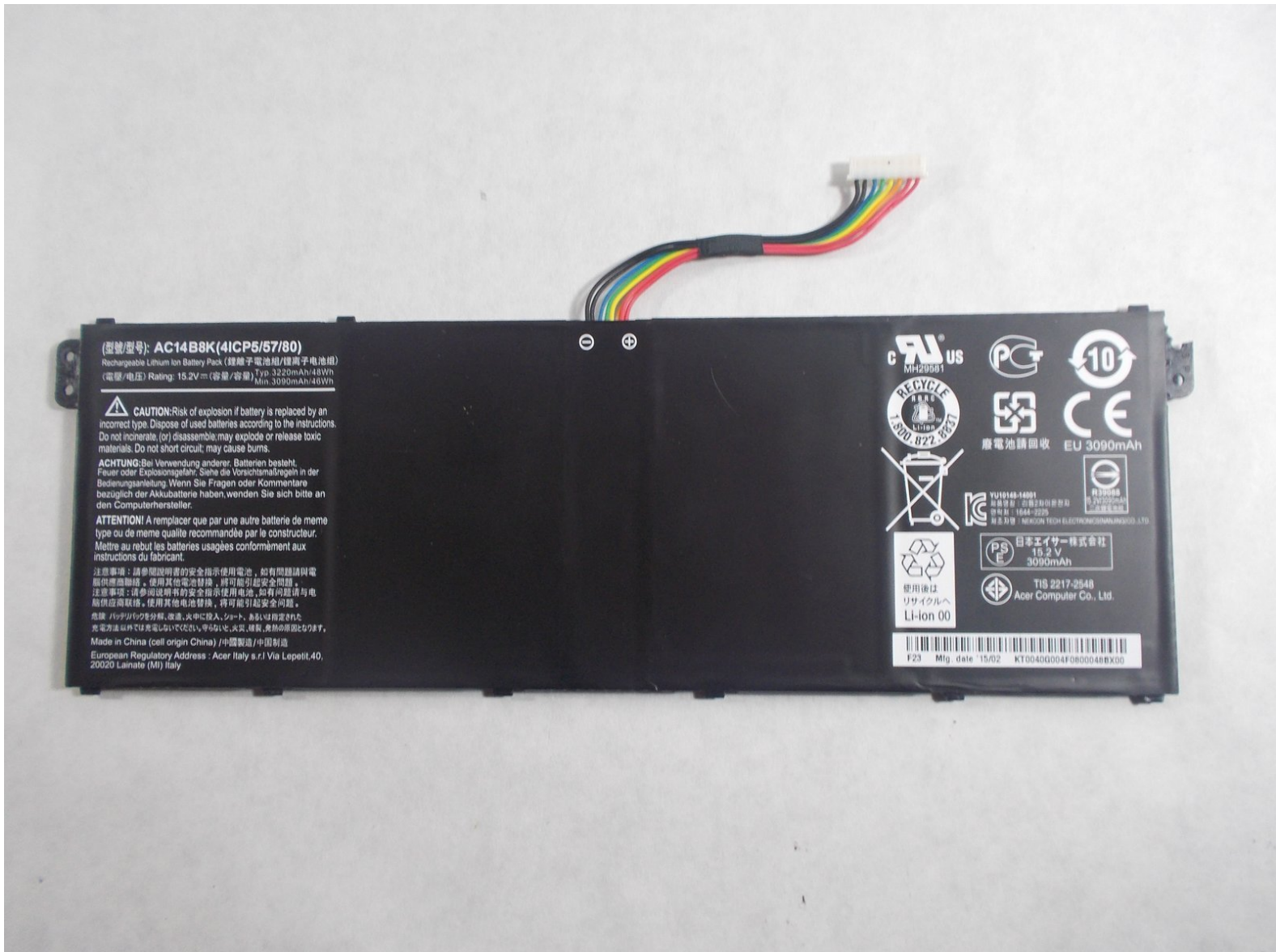




# Acer Chromebook 15 CB5-571-C09S Battery Replacement

Use this guide to replace the battery in your Acer Chromebook 15 CB5-571-C09S.

Written By: Sakiynah Howard



---

## INTRODUCTION

This guide will walk you through the process of replacing a dead or dying battery in the Acer Chromebook 15 CB5-571-C09S.

---

### TOOLS:

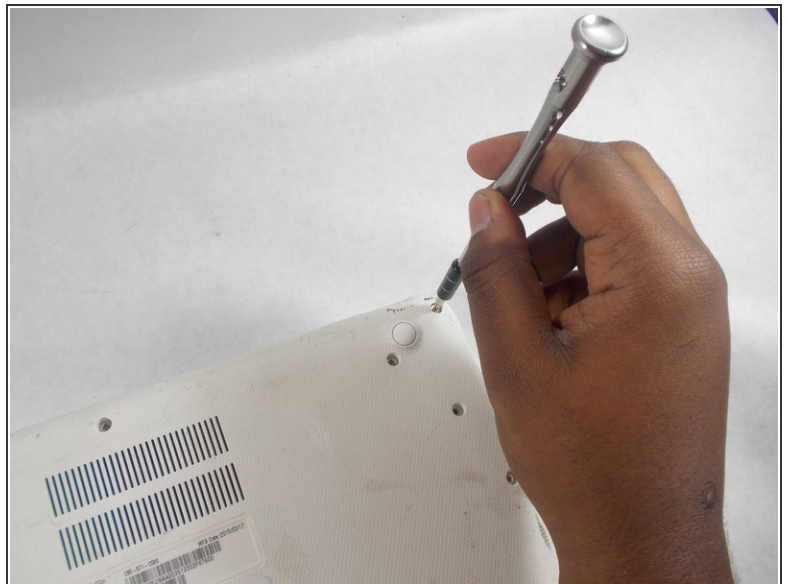
- [iFixit Opening Tools](#) (1)
  - [Phillips #0 Screwdriver](#) (1)
  - [Phillips #00 Screwdriver](#) (1)
-

## Step 1 — Back Cover



- Place the device on a flat surface faced down so that the fan vents are at the top of the device.

## Step 2



- Unscrew the eighteen 6 mm PH0 Phillips head screws from the back of the device.



### Step 3



- Use a plastic opening tool to pry open the back cover around the edges of the device.

⚠ Be careful not to crack or break the back cover of the device.

ⓘ You will have to adjust the position of the device to pry it open along all the edges.

### Step 4



- Stand the device up with the hinges on top and carefully pull apart the back cover from the device.

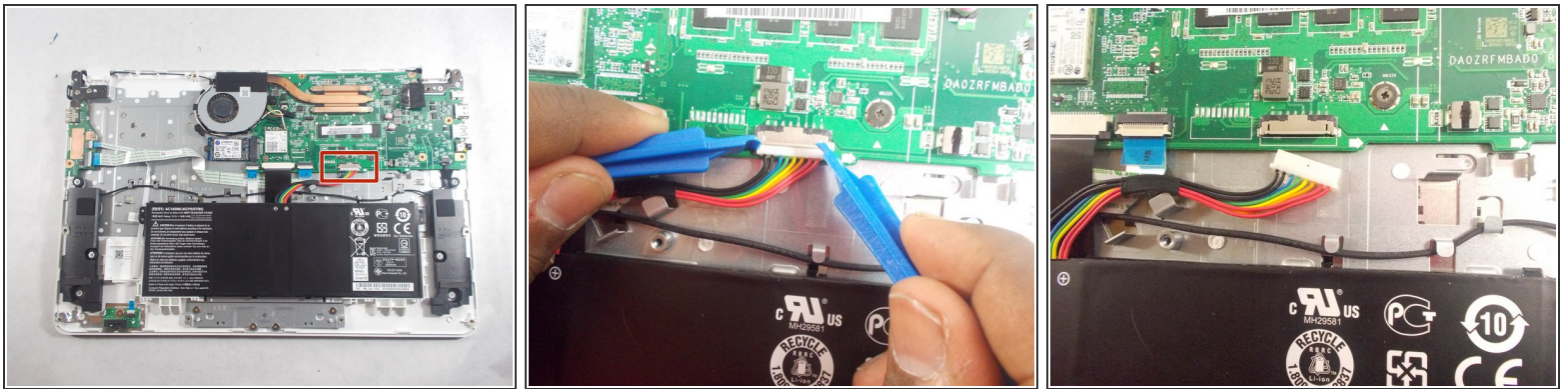
## Step 5 — Battery



**i** The battery is the large black rectangle located in the bottom center of the device.

- Unscrew the single black 5 mm PH00 Phillips head screw holding the battery in place located at the top right corner of the battery.

## Step 6



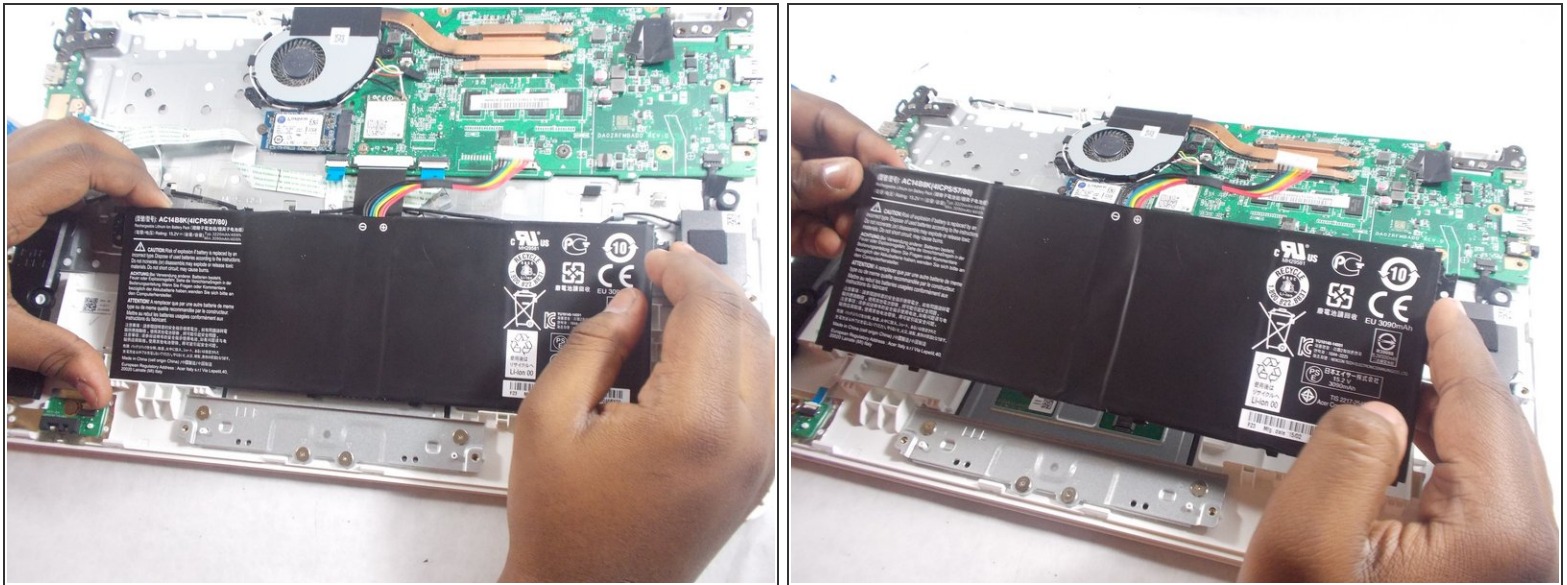
- Disconnect the battery connector from the motherboard using two plastic opening tools.

**i** The battery connector is the white "plug" that connects the battery to the motherboard with rainbow colored wires attached to it.

- Use two of the plastic opening tools on either edge of the battery connector and carefully pull out the battery connector out from the motherboard.



## Step 7



- Once the battery has been disconnected from the motherboard it can easily be removed from the device.
- Grab the top edge of the battery and carefully pull it up and out of the device towards you.

To reassemble your device, follow these instructions in reverse order.