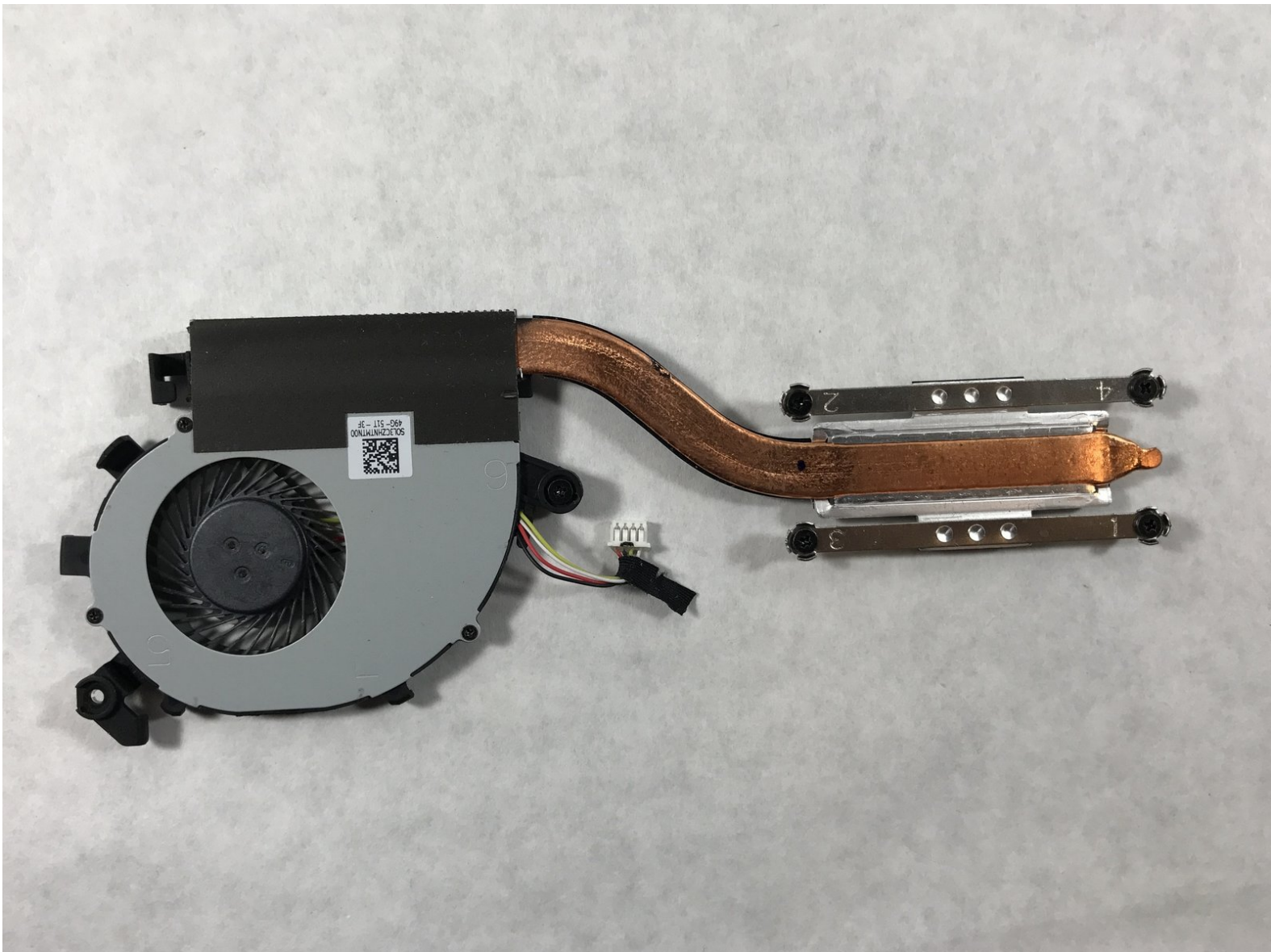




Acer Chromebook C720-2103 Fan Replacement

How to properly remove the fan of the Acer Chromebook C720-2103.

Written By: Matthew Holt



INTRODUCTION

This guide explains how to properly remove the fan of the Acer Chromebook C720-2103. It can be referenced for temporary removal, while replacing another component, or for the fans replacement. This is a moderately hard replacement, requiring the removal of the battery first.

A fan replacement may be necessary if the device is experiencing unexpected shutdowns due to overheating.

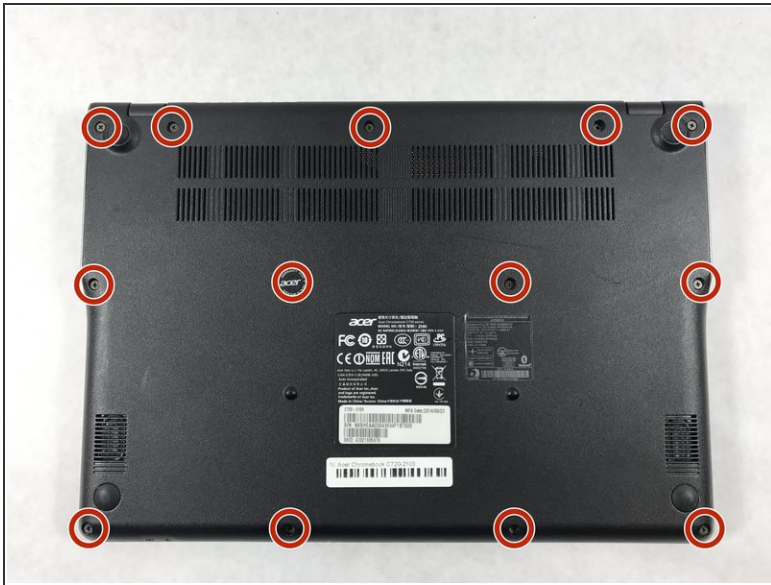
- **Be extremely gentle while handling internal components of the device, most are very fragile.**
- **Make sure the device is powered off during this replacement. There is a possibility of electrocution.**



TOOLS:

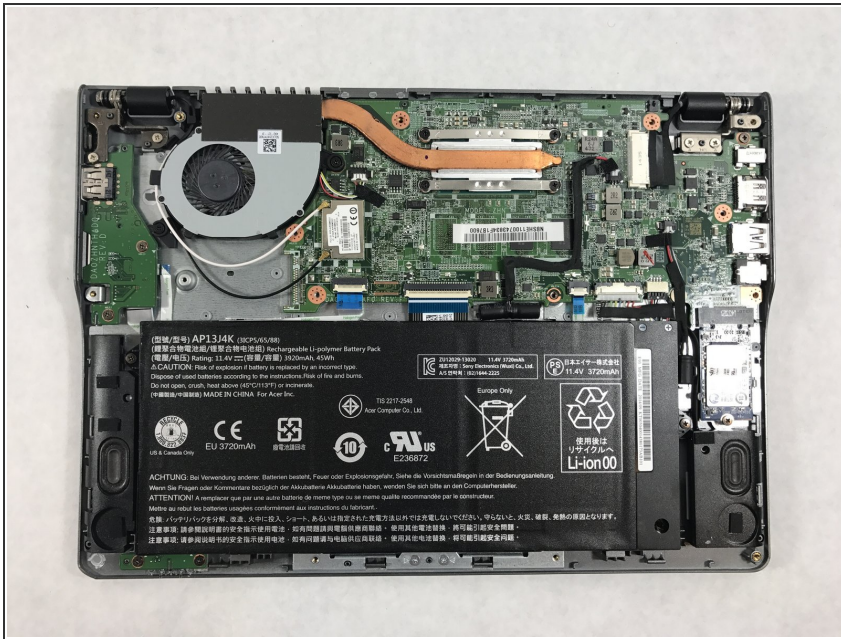
- [iFixit Opening Tools](#) (1)
 - [Phillips #0 Screwdriver](#) (1)
 - [Spudger](#) (1)
-

Step 1 — Battery



- Shut the device off.
 - Turn the device over so the bottom is facing up.
 - Remove all thirteen 6mm screws using a Phillips #0 screwdriver.
- ☑ Remember to keep screws separated by step and their locations in the device. This will help prevent confusion during reassembly.
- ⚠ Removing the battery is necessary to prevent electric shock during part replacement.

Step 2



- Wedge a plastic opening tool between the back casing and the rest of the device.
- Apply pressure up and down carefully, until backing pops up. Repeat this process in multiple spots if needed.
- ⓘ It is easiest to start at the back of the device, between the hinges of the screen.

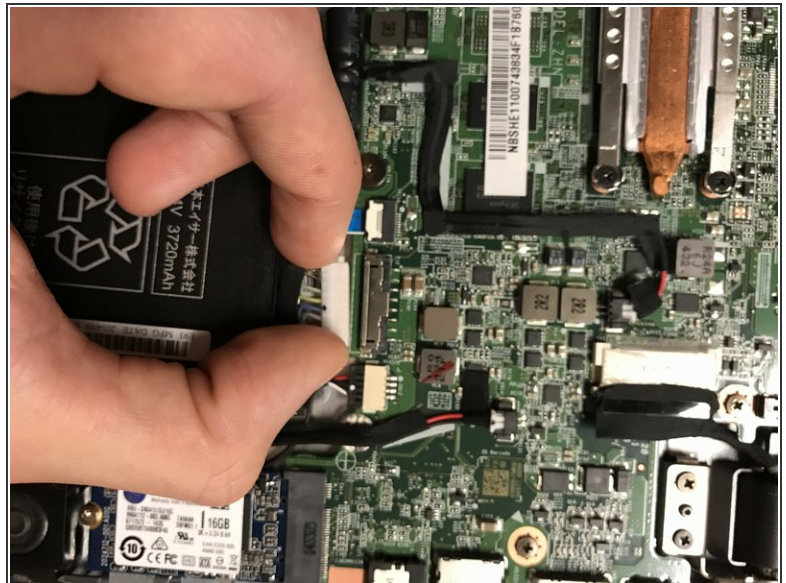
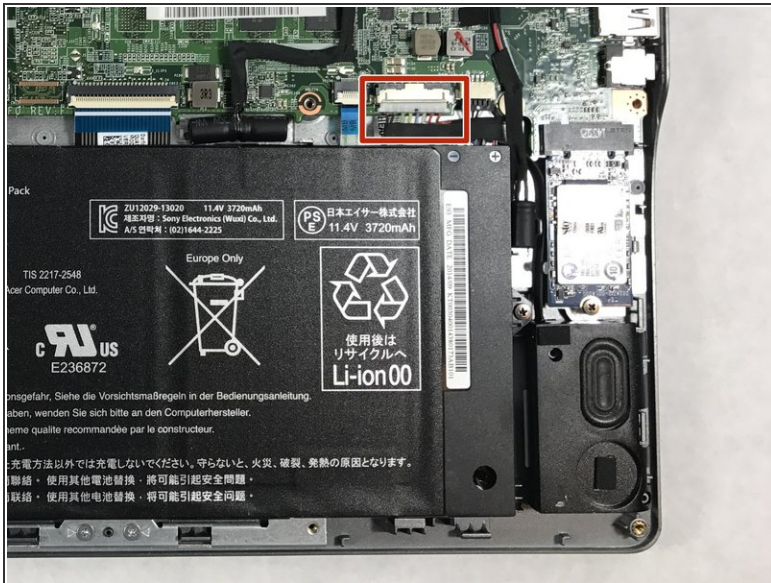
⚠ Do not apply too much force. This will crack the plastic.

Step 3



- Remove the three 6mm screws indicated by the red circles with a Phillips #0 screwdriver.

Step 4



- Pull the rainbow cable connector out of the white terminal by wiggling it gently from side to side with your fingers.

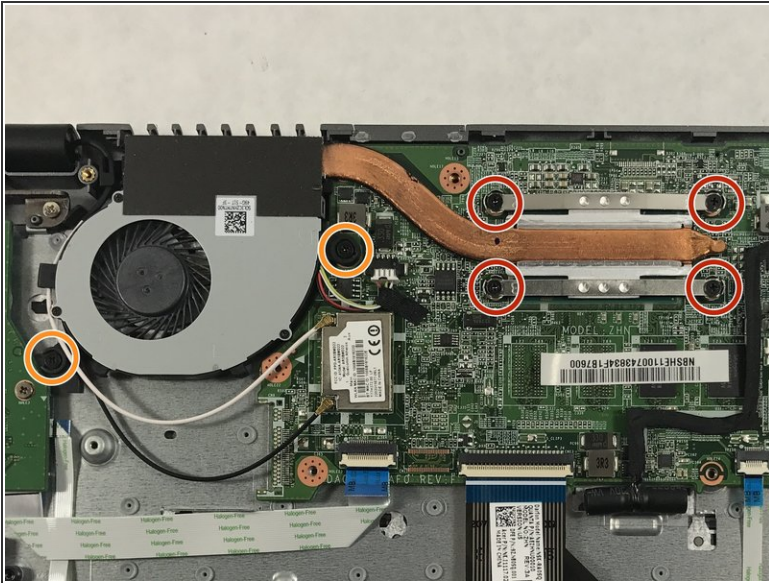
⚠ Be careful when removing the cable. Too much force can damage the motherboard or the cable connector.

This is a top-down view of a laptop's internal hardware. The central component is the green motherboard, which features several integrated circuits and connectors. Two blue RAM modules are installed in their respective slots. A large black hard drive is mounted in the lower right section. In the upper left corner, a silver cooling fan is visible, connected by a white cable. Various other components like capacitors, resistors, and smaller circuit boards are scattered across the main board. Several white labels with barcodes and text are attached to different parts, including one near the fan that reads "MODEL: P-SP00P (FULL SHOCK)". The entire assembly is housed within a metal chassis.



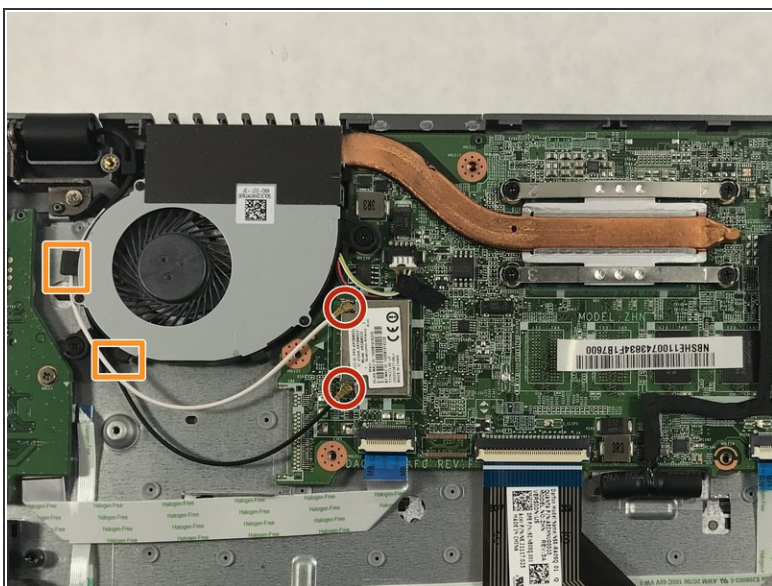
- Lift the battery straight up and out of the device with your hands. Take care not to knock the battery against another component.

Step 6 — Fan



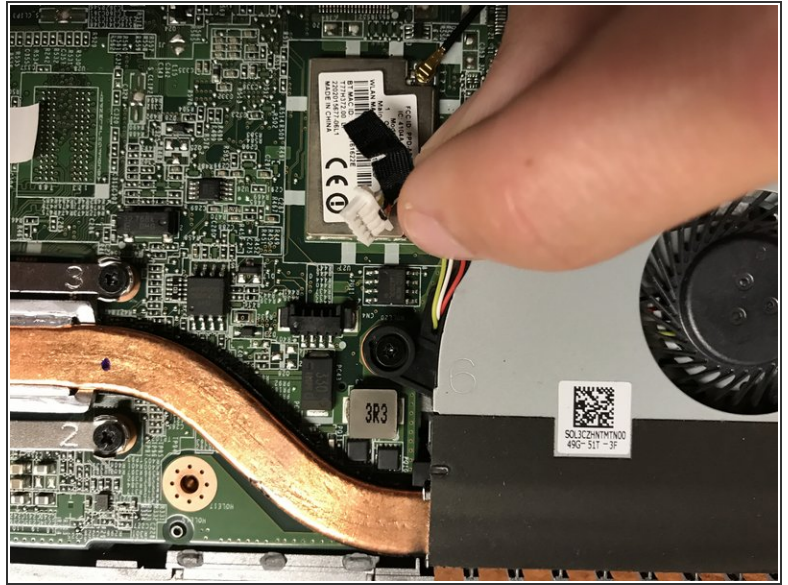
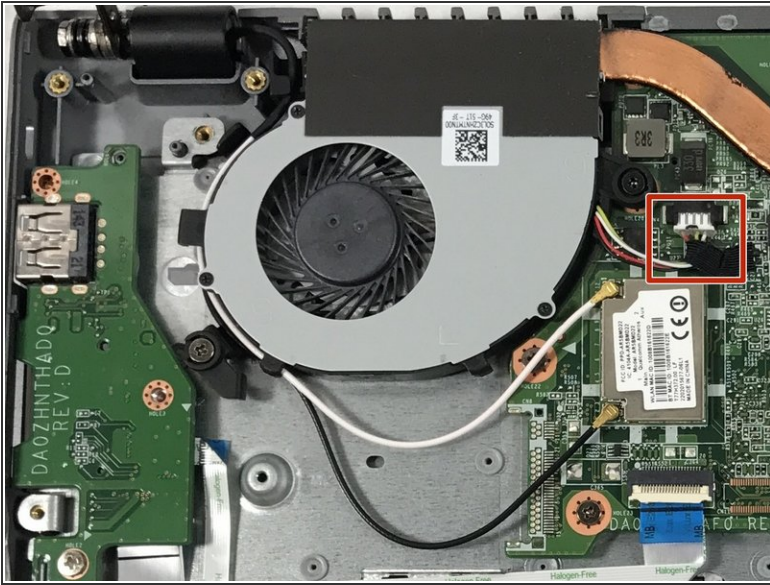
- Remove all four 6mm screws attaching the fan to the motherboard with a Phillips #0 screwdriver.
- Remove the two 6mm screws attaching the fan to the device base with the Phillips #0 screwdriver.
- ⓘ These screws are permanently set into the fan. Once unscrewed from the base, the two screws will still be attached to the fan.

Step 7



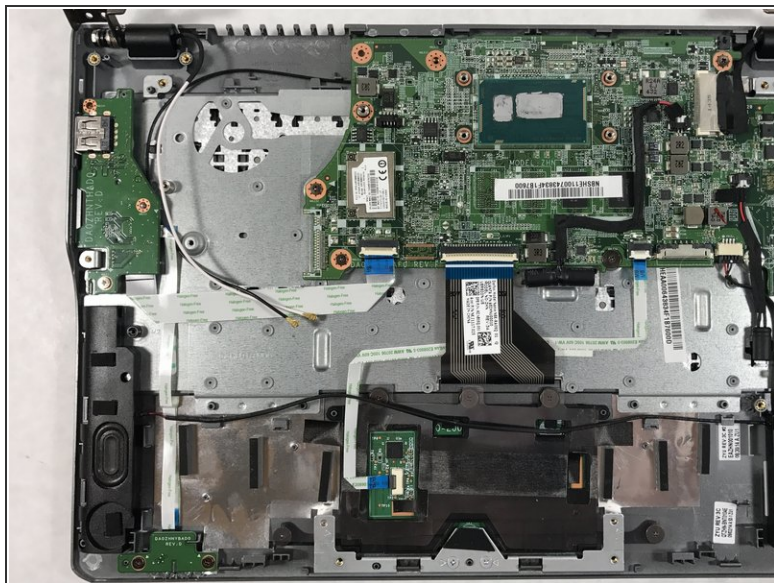
- Unsnap the two coaxial connectors from the motherboard.
 - ⓘ To avoid damaging the wires, wedge a spudger under their rounded, metal ends and gently pop them up from the motherboard one at a time.
- Unhook the coaxial wires from the side of the fan by gently pulling them downward and away from the hooks.
- ☞ During reassembly, these two wires can be surprisingly difficult to reconnect to the motherboard. The easiest method is to hold the wires in place over their terminals and click the metal bases down with the tip of a spudger.

Step 8



- Peel up the tape attaching the rainbow connector wire to the motherboard, but leave the tape attached to the wire itself.
 - ⚠ Removing the tape from the wire can damage the wire.
- Pull the rainbow cable connector out of the black terminal by wiggling it gently from side to side with your fingers.

Step 9



- Lift the fan component up and out of device with your hands. Take care not to knock the fan against the motherboard.

To reassemble your device, follow these instructions in reverse order.