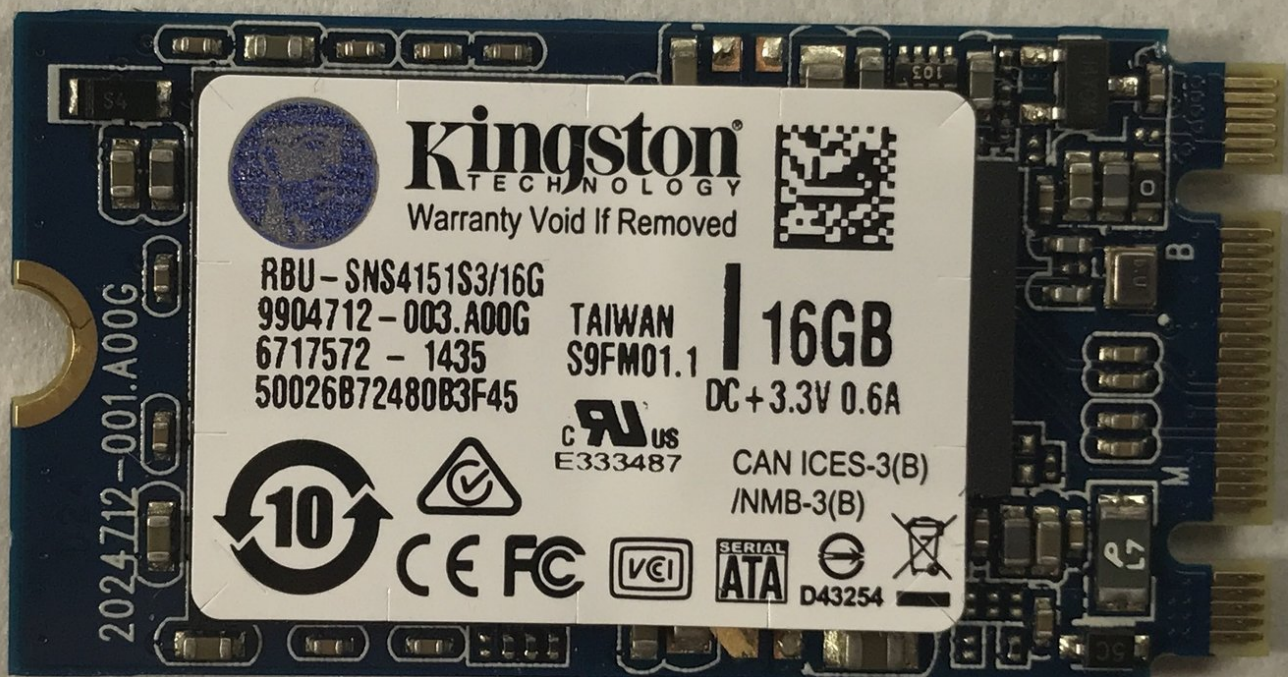




# Acer Chromebook C720-2103 Solid State Drive Replacement

How to remove the solid state drive (SSD) of the Acer Chromebook C720-2103.

Written By: Matthew Holt



---

## INTRODUCTION

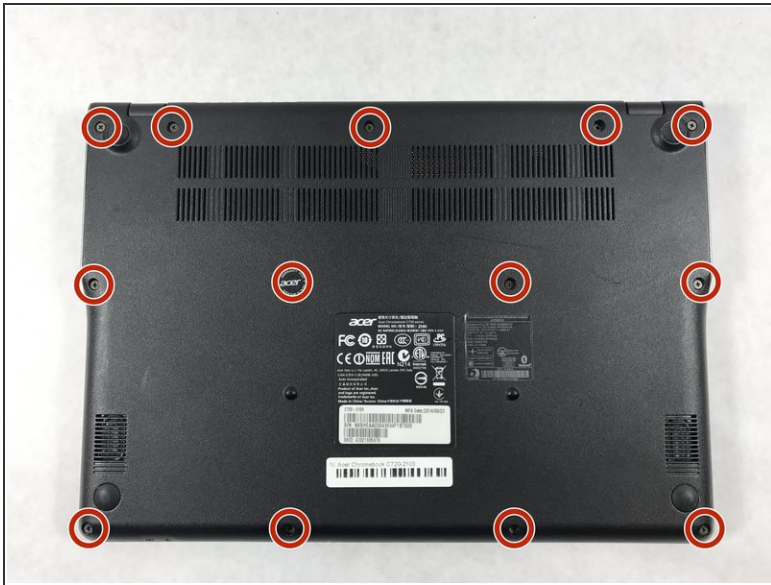
This guide goes through the steps on how to replace the solid state drive for the Acer Chromebook C720-2103. This is a fairly easy replacement guide and only need the knowledge for the use of a Phillips screwdriver. The main part of the replacement guide is removing screws, the battery and the actual part. There is also a removable of one simple cable. Make sure the device is powered off during this replacement as there is a possibility of electrocution.



### TOOLS:

- [Phillips #0 Screwdriver](#) (1)
-

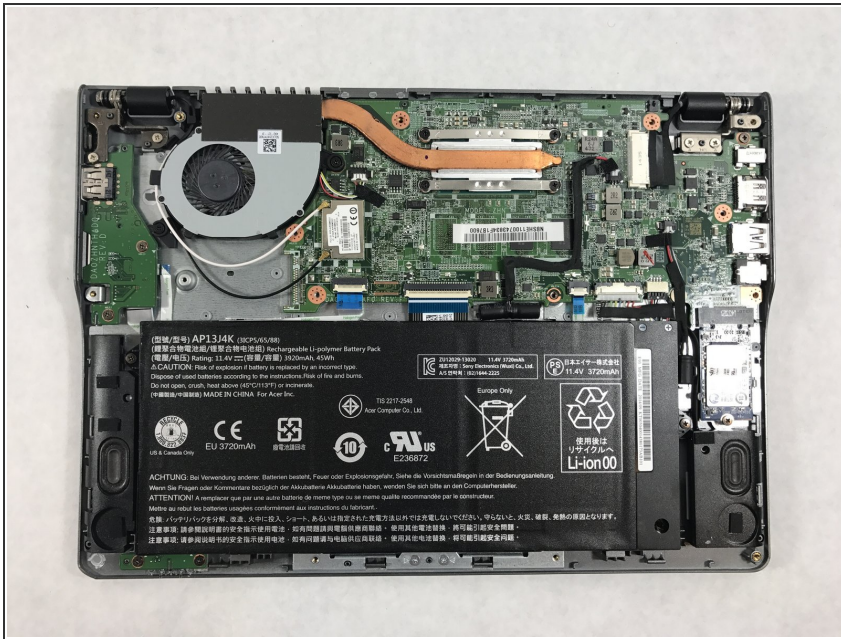
## Step 1 — Battery



- Shut the device off.
  - Turn the device over so the bottom is facing up.
  - Remove all thirteen 6mm screws using a Phillips #0 screwdriver.
- ☑ Remember to keep screws separated by step and their locations in the device. This will help prevent confusion during reassembly.
- ⚠ Removing the battery is necessary to prevent electric shock during part replacement.



## Step 2



- Wedge a plastic opening tool between the back casing and the rest of the device.
- Apply pressure up and down carefully, until backing pops up. Repeat this process in multiple spots if needed.
- ⓘ It is easiest to start at the back of the device, between the hinges of the screen.

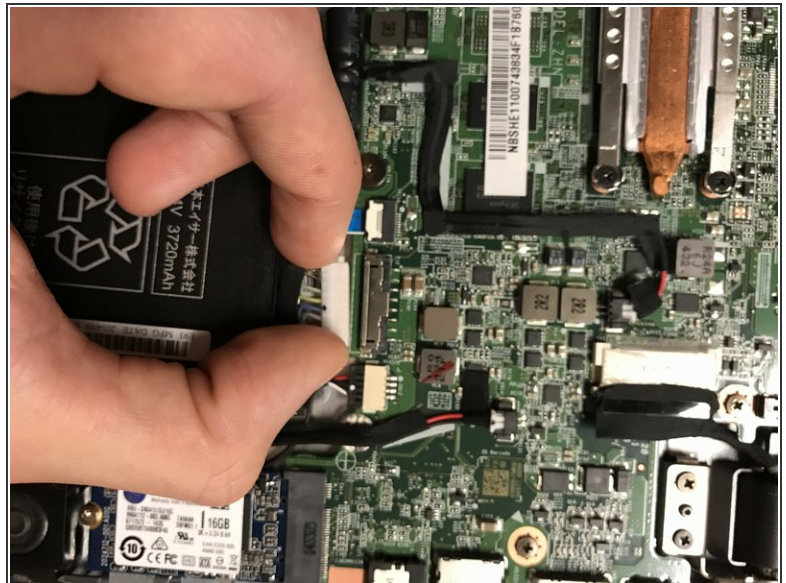
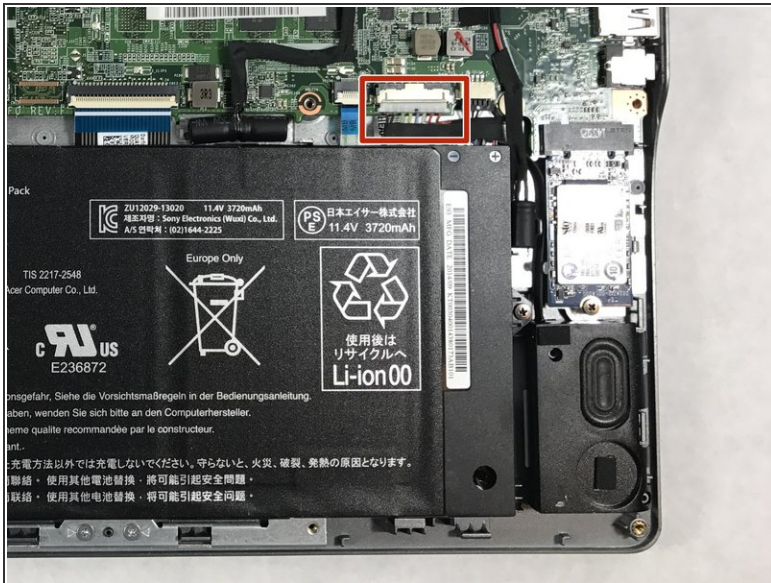
⚠ Do not apply too much force. This will crack the plastic.

## Step 3



- Remove the three 6mm screws indicated by the red circles with a Phillips #0 screwdriver.

## Step 4

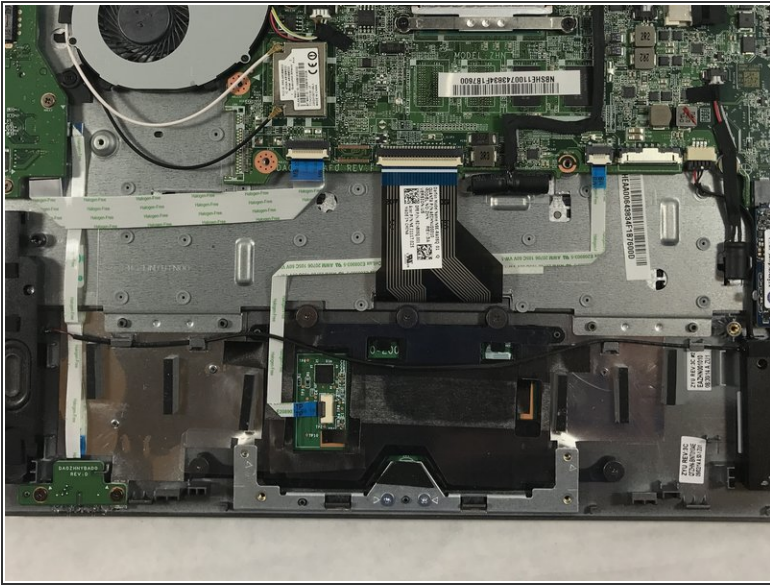


- Pull the rainbow cable connector out of the white terminal by wiggling it gently from side to side with your fingers.

⚠ Be careful when removing the cable. Too much force can damage the motherboard or the cable connector.

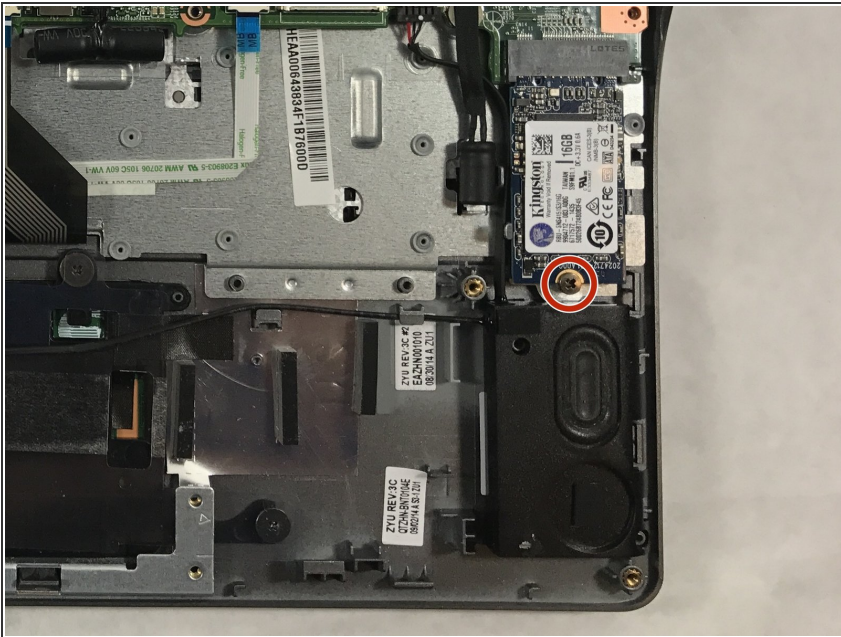


## Step 5



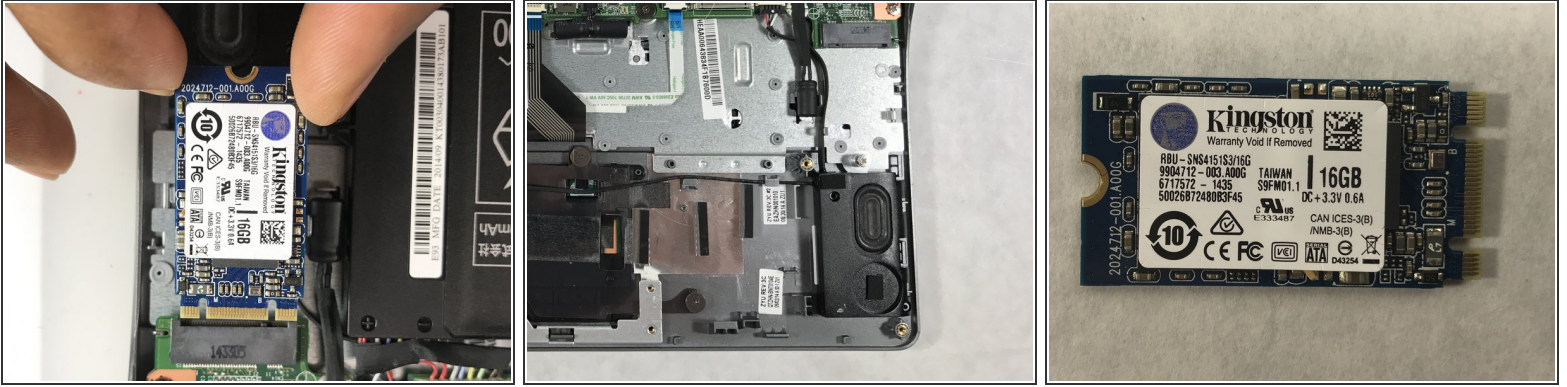
- Lift the battery straight up and out of the device with your hands. Take care not to knock the battery against another component.

## Step 6 — Solid State Drive



- Remove one 6mm screw using a Phillips #0 screwdriver.

## Step 7



- Carefully remove the solid state drive from the solid state drive slot by sliding it downward away from the motherboard.

To reassemble your device, follow these instructions in reverse order.