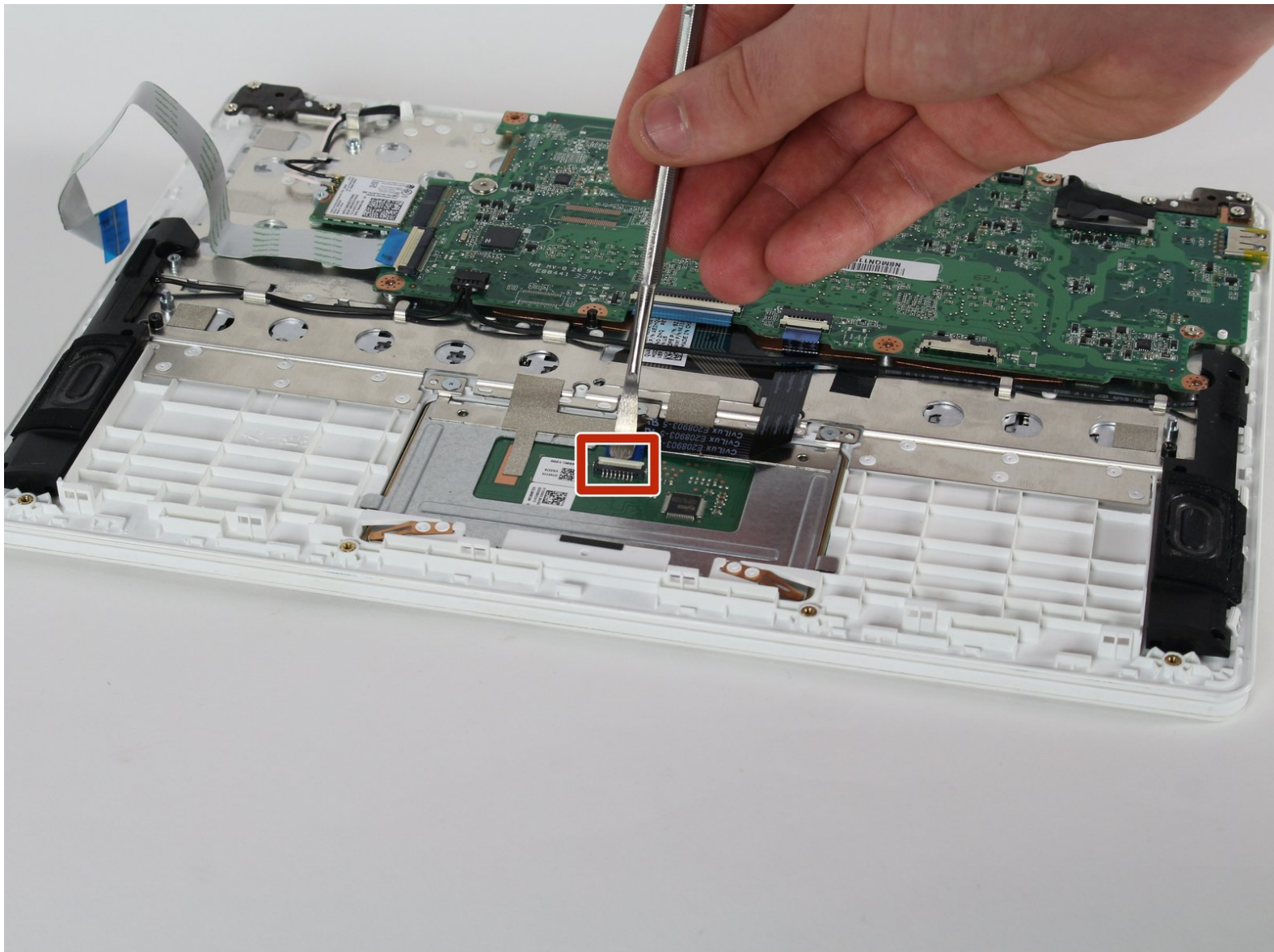




# Acer Chromebook CB3-111-C8UB Touchpad Replacement

This guide shows how to replace your touchpad if it is faulty.

Written By: Travis Vo



---

## INTRODUCTION

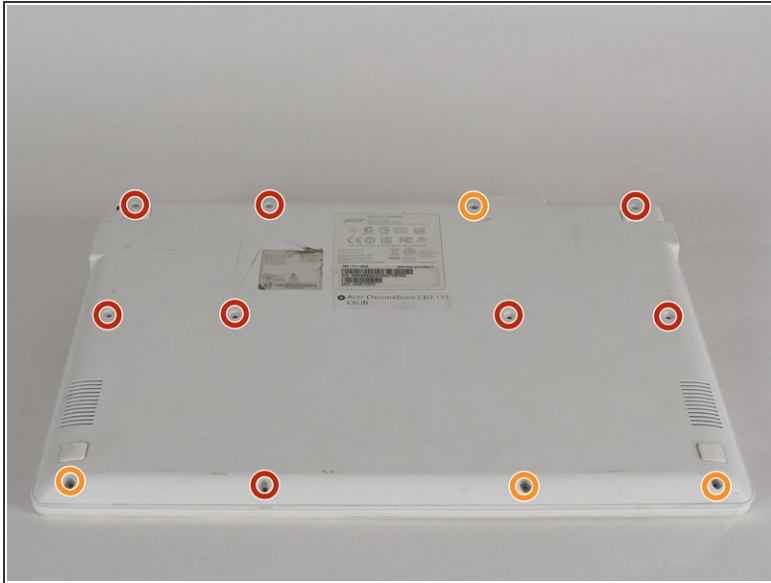
This guide will show you how to replace an unresponsive or otherwise broken touchpad. To do this, you must remove the laptop's backing and battery in order to access the touchpad. After removing the backing, another set of screws will need to be removed, so be sure to be careful in identifying which screws belong where when reassembling the device.



### TOOLS:

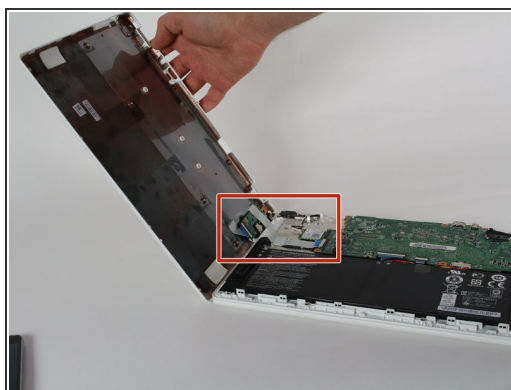
- [Spudger](#) (2)
  - [Phillips #1 Screwdriver](#) (2)
  - [Metal Spudger](#) (2)
-


## Step 1 — Back Panel Removal



- Position the laptop upside down with the hinges on the side furthest away from you.
- Remove the eight 8mm screws with a phillips #1 screwdriver,
- Remove the four 4.5mm screws with a phillips #1 screwdriver,

## Step 2

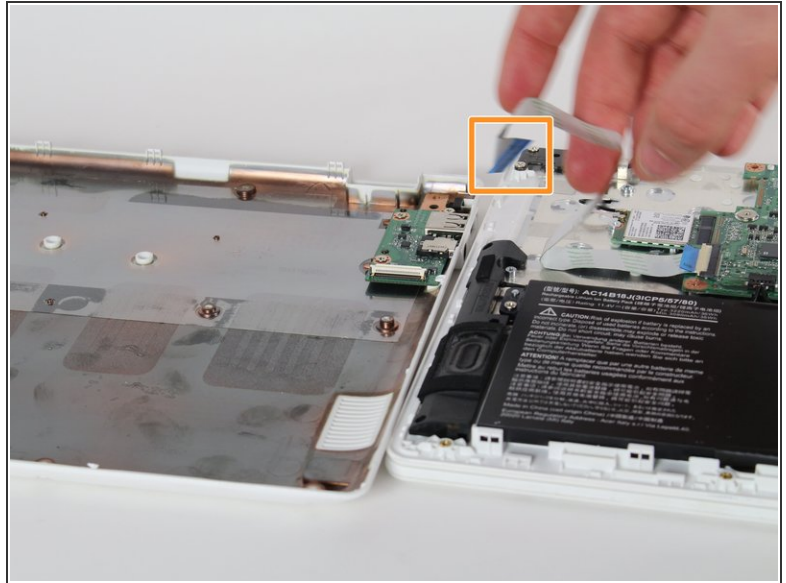


 There is a wire connecting the two pieces of the laptop, from the inside, on the left, be careful not to damage it.

- Use the plastic opening tool to pry open then remove the plastic base from the rest of the laptop. Start from the right side and work towards the left.
- Set the plastic base beside the laptop by opening it as if you were opening a book.

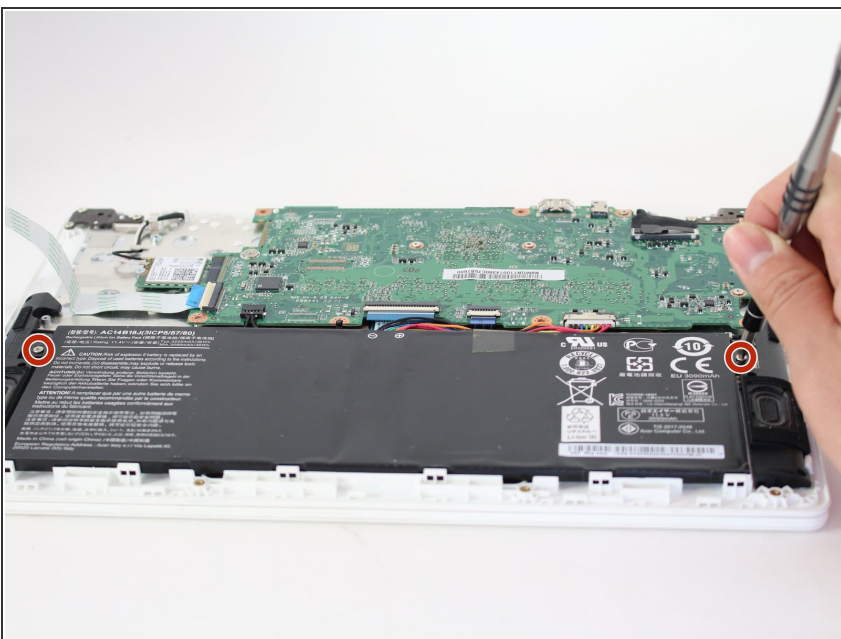


### Step 3



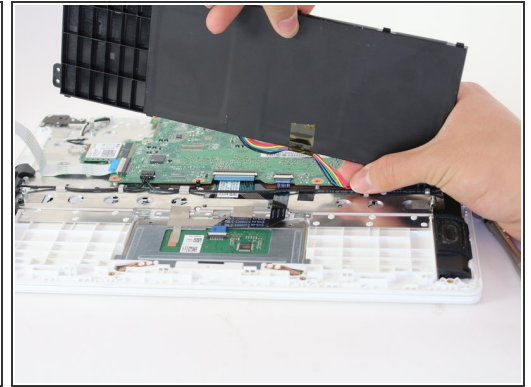
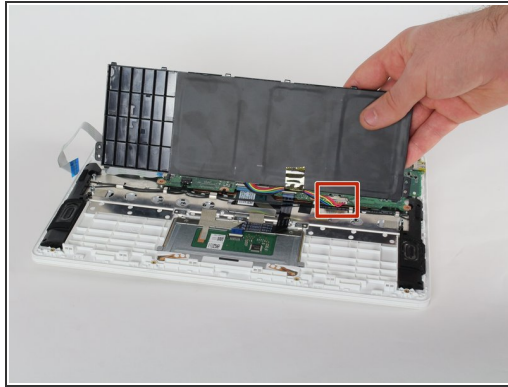
- Flip up the small white ZIF connector by using a fingernail or metal spudger.
  - Pull the blue tab to remove the ribbon cable.
- i** The ribbon cable is adhered to the plastic so it will take a little bit of force to remove it.

### Step 4 — Battery



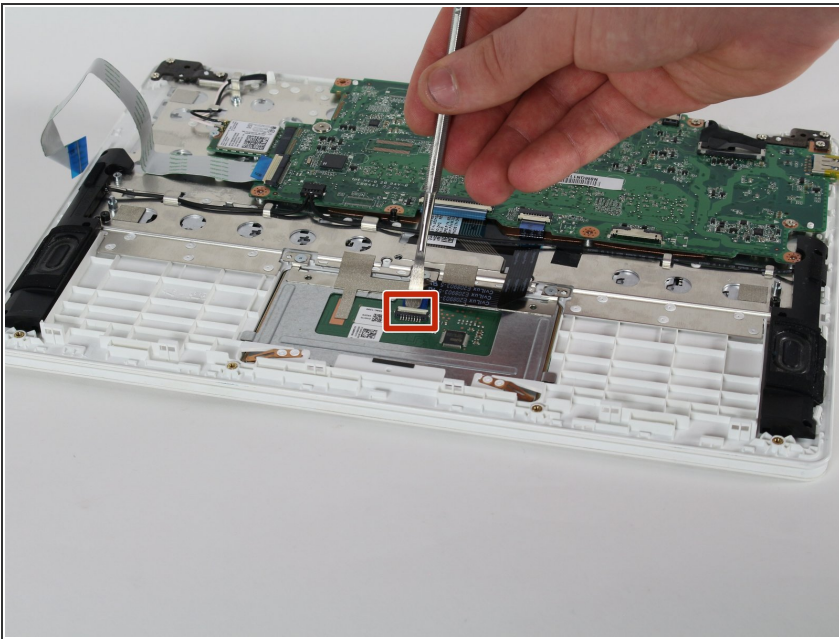
- Locate and remove the two 6mm screws holding the battery in place with a Phillips #1 screwdriver.

## Step 5



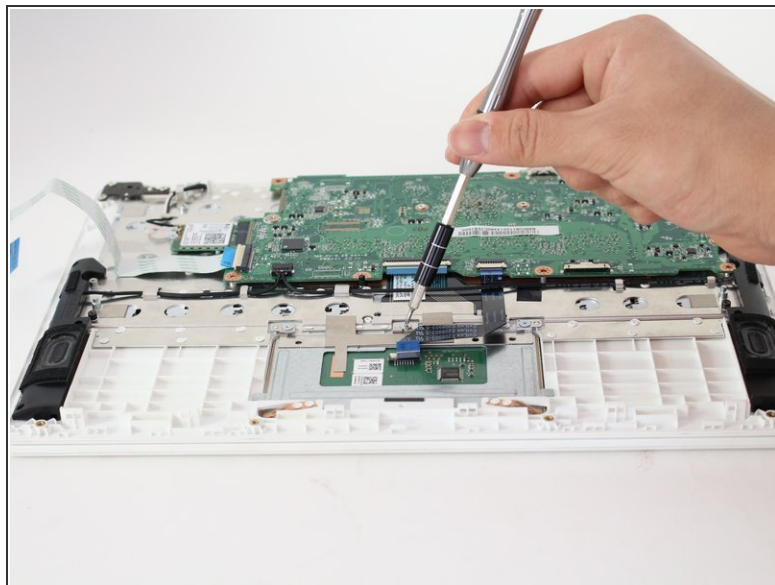
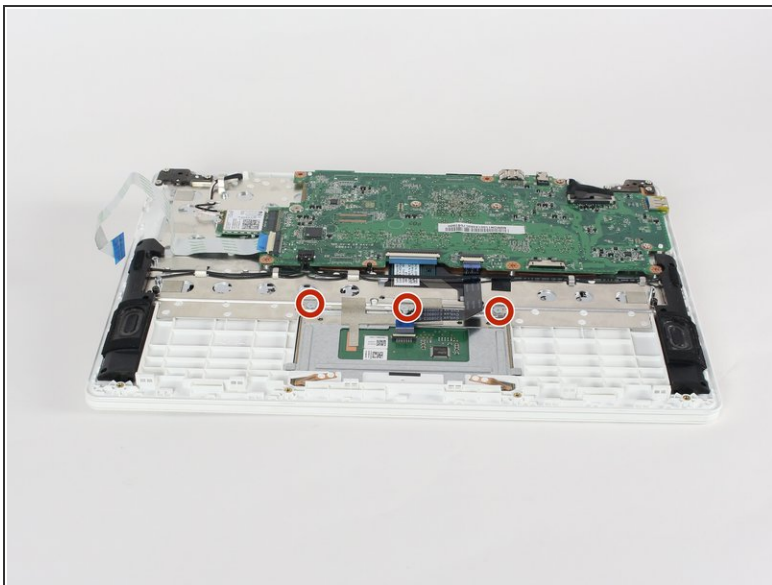
- Pull the battery forward to clear the base from its clips.
- Lift the battery up so that there is room to grab and unplug the bundled cable connector.

## Step 6 — Touchpad



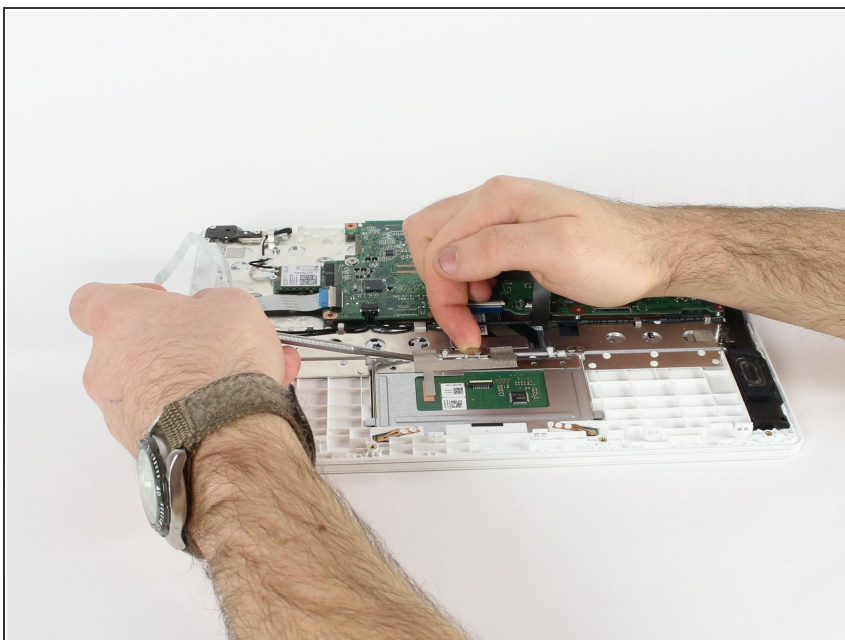
- Use a metal spudger to flip up the white ZIF connector that holds the ribbon cable in place.
- Unplug the black ribbon cable from the track pad assembly.

## Step 7



- Use a Phillips #000 screwdriver to remove the three 2.4mm screws located across the top of the track pad assembly.

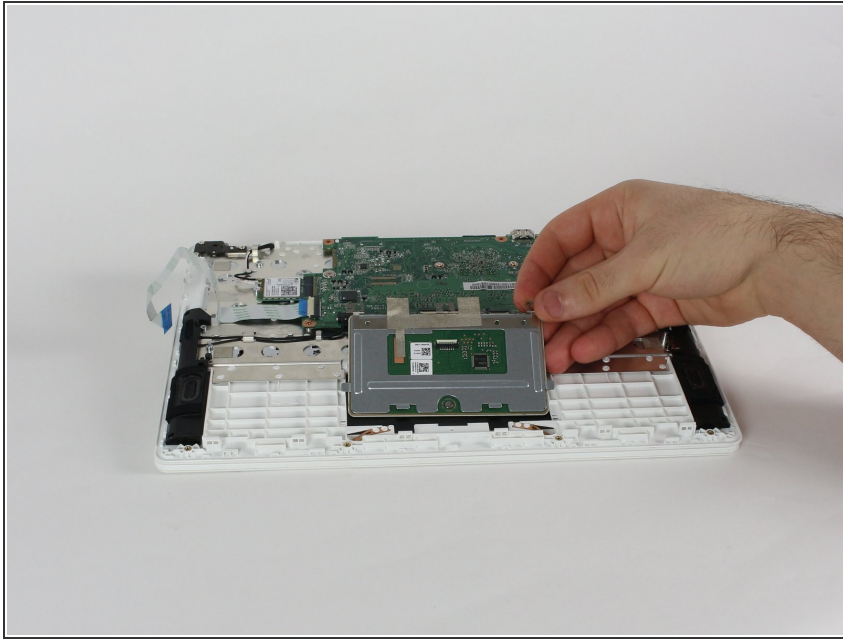
## Step 8



- Use your finger to gently pull up on the assembly and slide a metal spudger under each of the two strips of tape and peel them off of the main metal plate.



## Step 9



- Slide the track pad assembly up towards the motherboard until it can be lifted up and out.

To reassemble your device, follow these instructions in reverse order.