

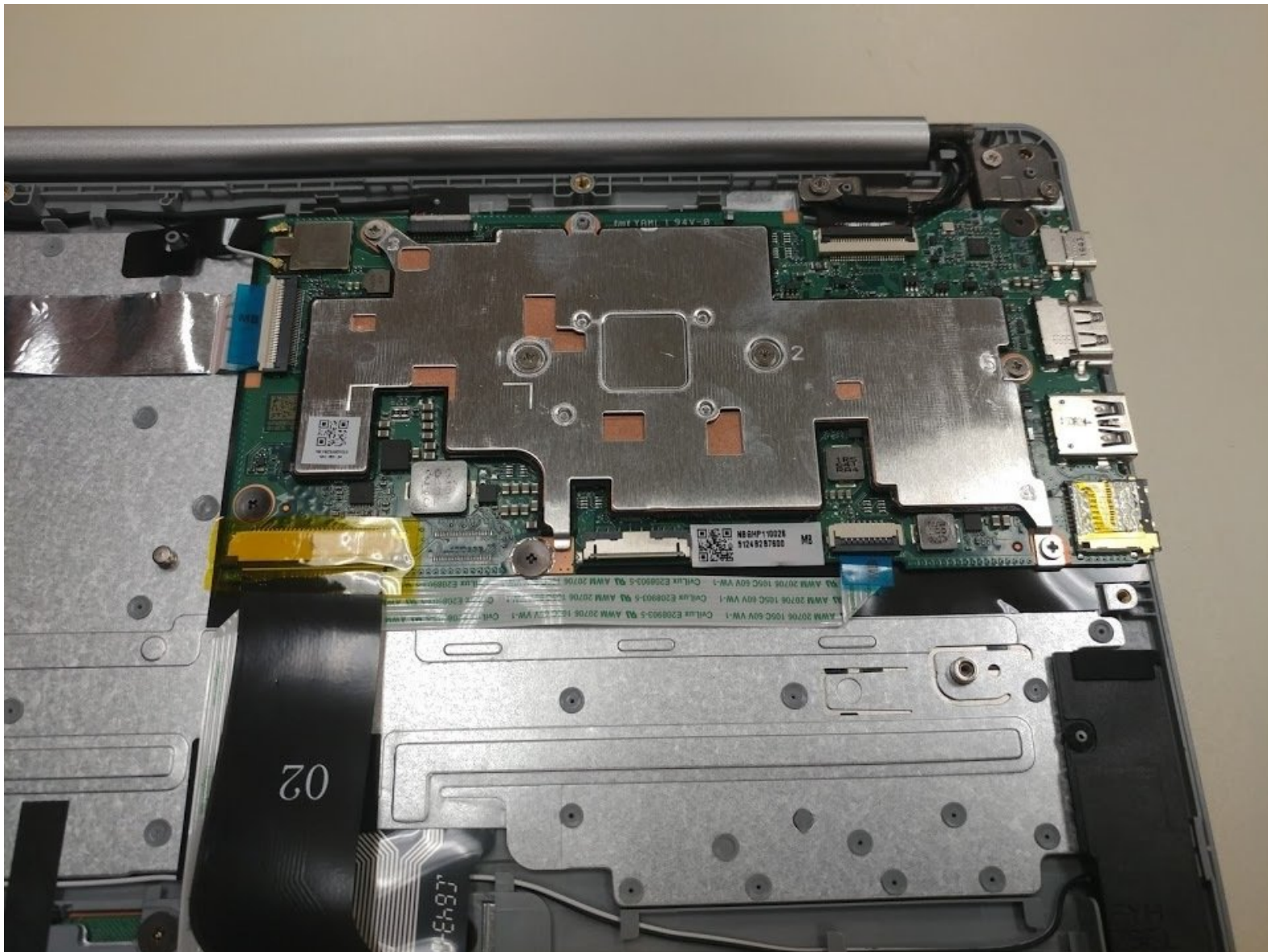


Acer Chromebook CB5-312T-K 8Z9

Motherboard Replacement

This guide will show how to remove and replace the motherboard of the Acer Chromebook CB5-312T-K 8Z9.

Written By: Robert McCullough



This document was generated on 2019-10-31 12:24:40 PM (MST).



TOOLS:

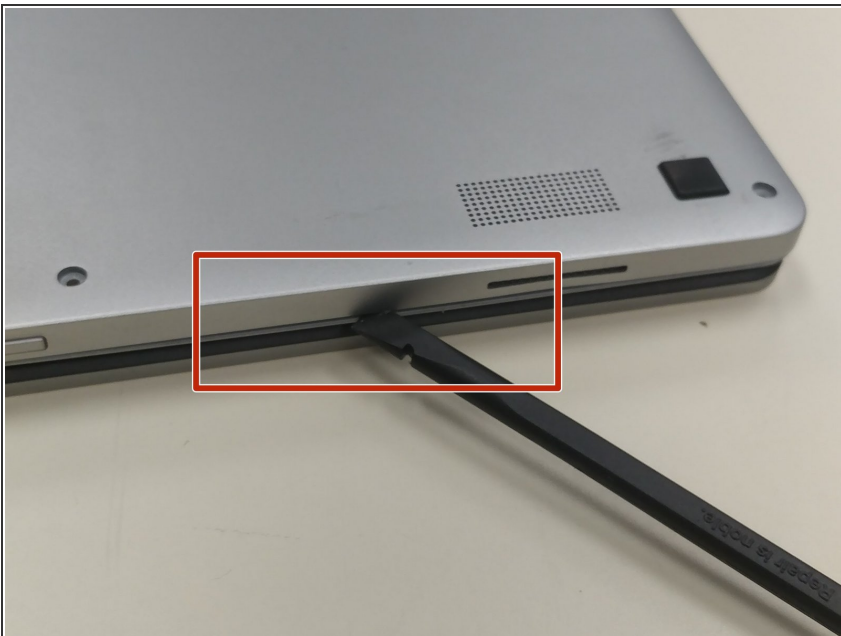
- [iFixit Opening Tools](#) (1)
- [Philips Head Screwdriver: Size J1](#) (1)
- [Tweezers](#) (1)

Step 1 — Acer Chromebook CB5-312T-K 8Z9 Back Cover



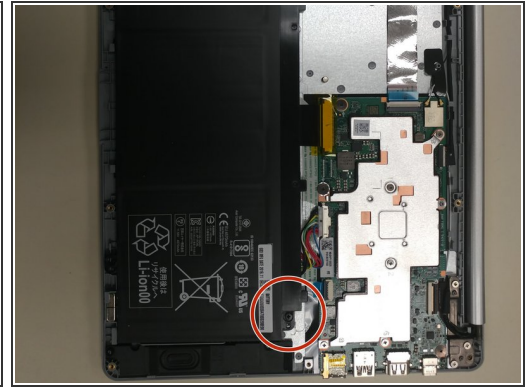
- First begin by flipping the laptop on its back and having the back cover face you directly.
- Then unscrew the ten Phillips head screws that hold down the back cover using the J1 Phillips head Screw Driver.

Step 2



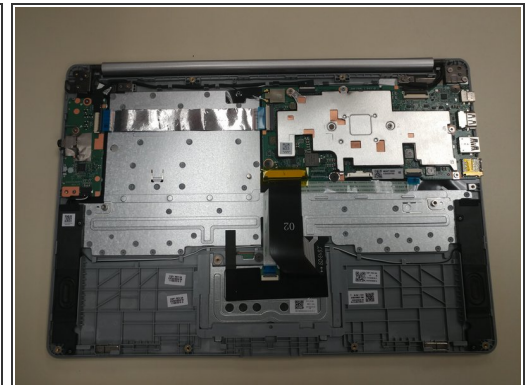
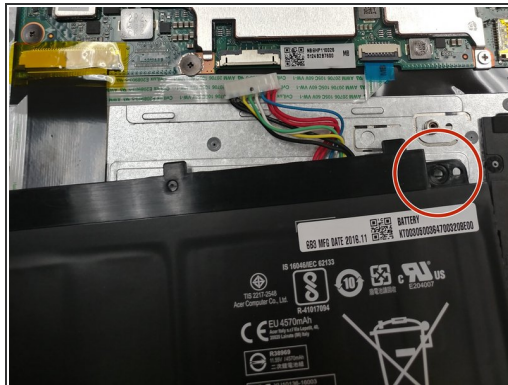
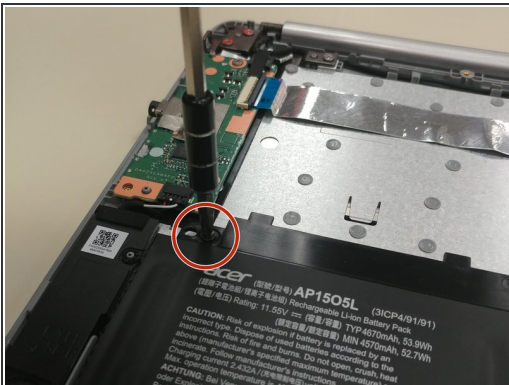
- Using the black plastic spudger, open the back cover and remove it from the laptop.

Step 3 — Battery



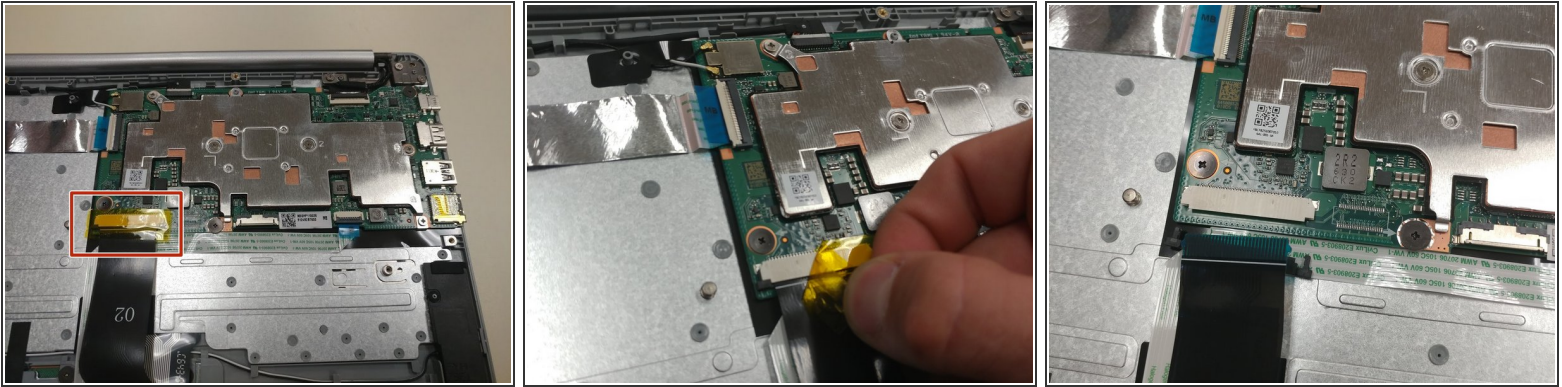
- Begin by locating the battery.
- Once you have located the battery, look for the screws that hold the battery in place.

Step 4



- Begin by unscrewing the two Phillips head screws that hold down the battery using the J1 Phillips head Screw Driver.
- Finally remove the battery from the laptop.

Step 5 — Motherboard



- Remove the yellow tape covering the ribbon cable in the bottom left of the motherboard as shown.
- Carefully remove the ribbon cable out from the connector.

Step 6



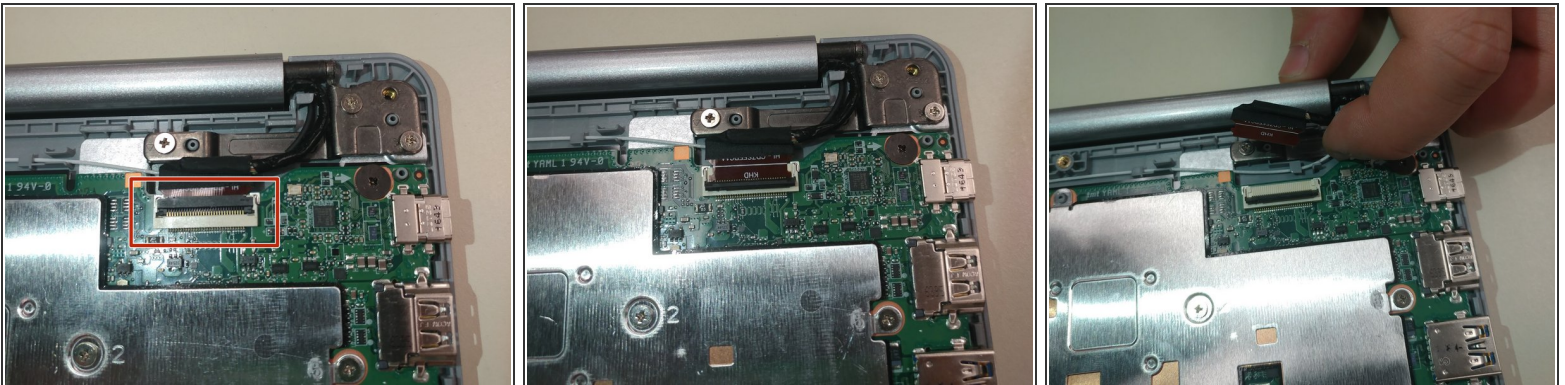
- Fold up the grey cover to release the ribbon cable in the bottom right of the board as shown.
- Carefully pull out the ribbon cable from the port by the blue tape.

Step 7



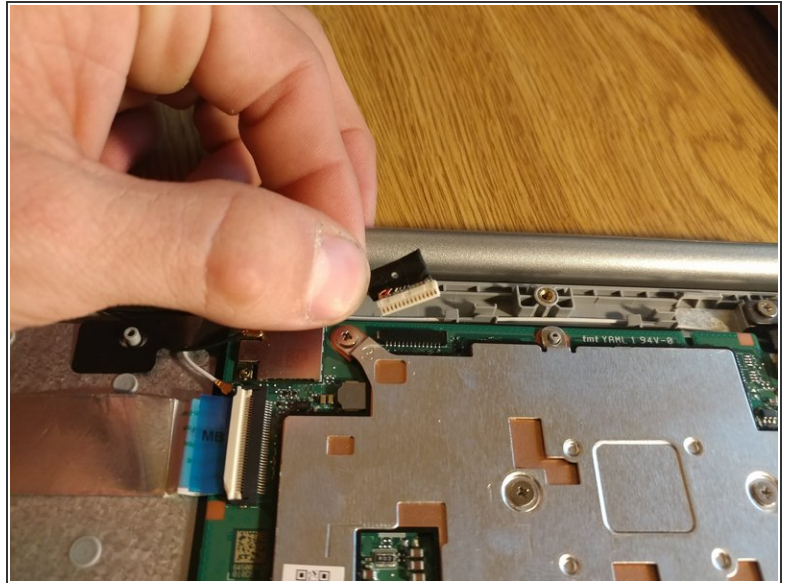
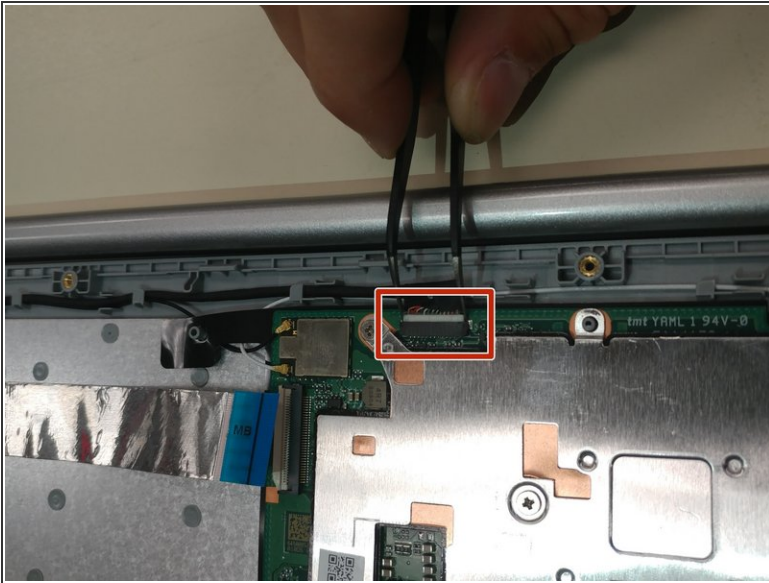
- Fold up the white cover to release the ribbon cable in the top left of the board as shown.
- Carefully pull out the ribbon cable from the port by the blue tape.

Step 8



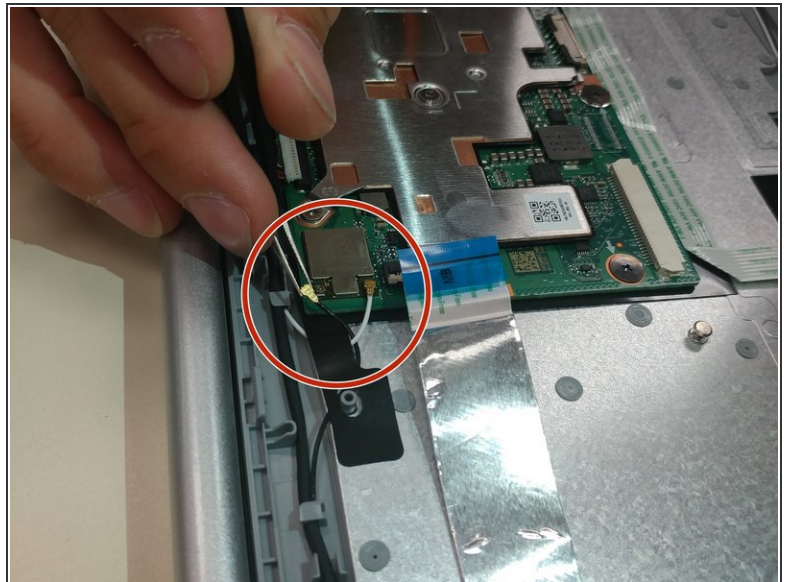
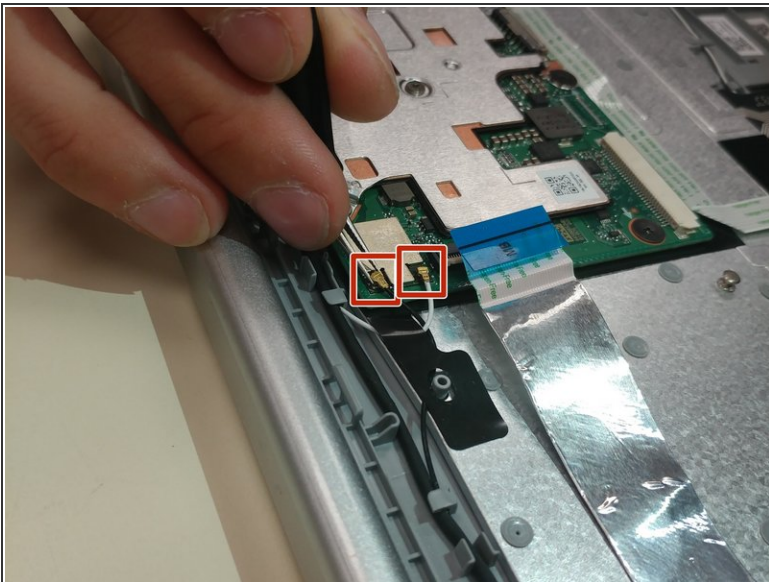
- Fold up the grey cover to release the cable on the top right of the board as shown
- Carefully pull out the cable from the port.

Step 9



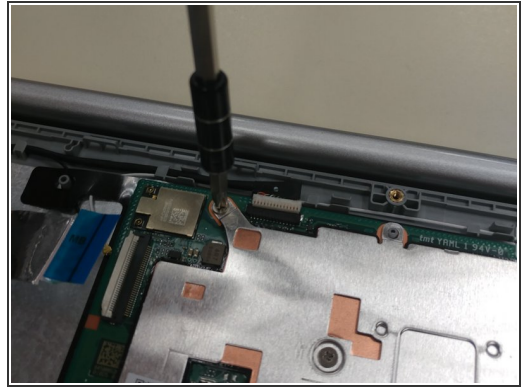
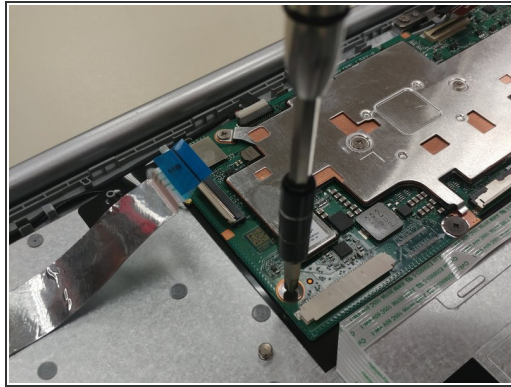
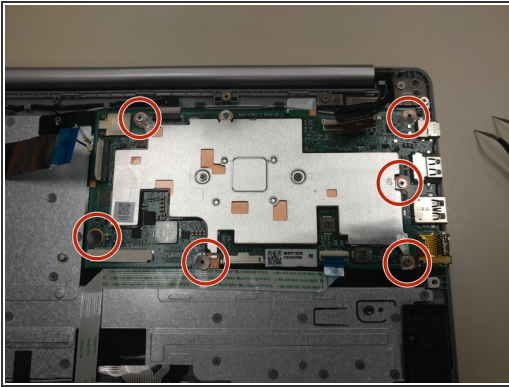
- Remove the cable with tweezers as shown along the top of the board.

Step 10



- Carefully pull off both brass connectors from the top left of the board with tweezers as shown.

Step 11



- Remove the six screws from the board as shown. There are two types of screws here, so be careful to keep them separate for reassembly.

To reassemble your device, follow these instructions in reverse order.