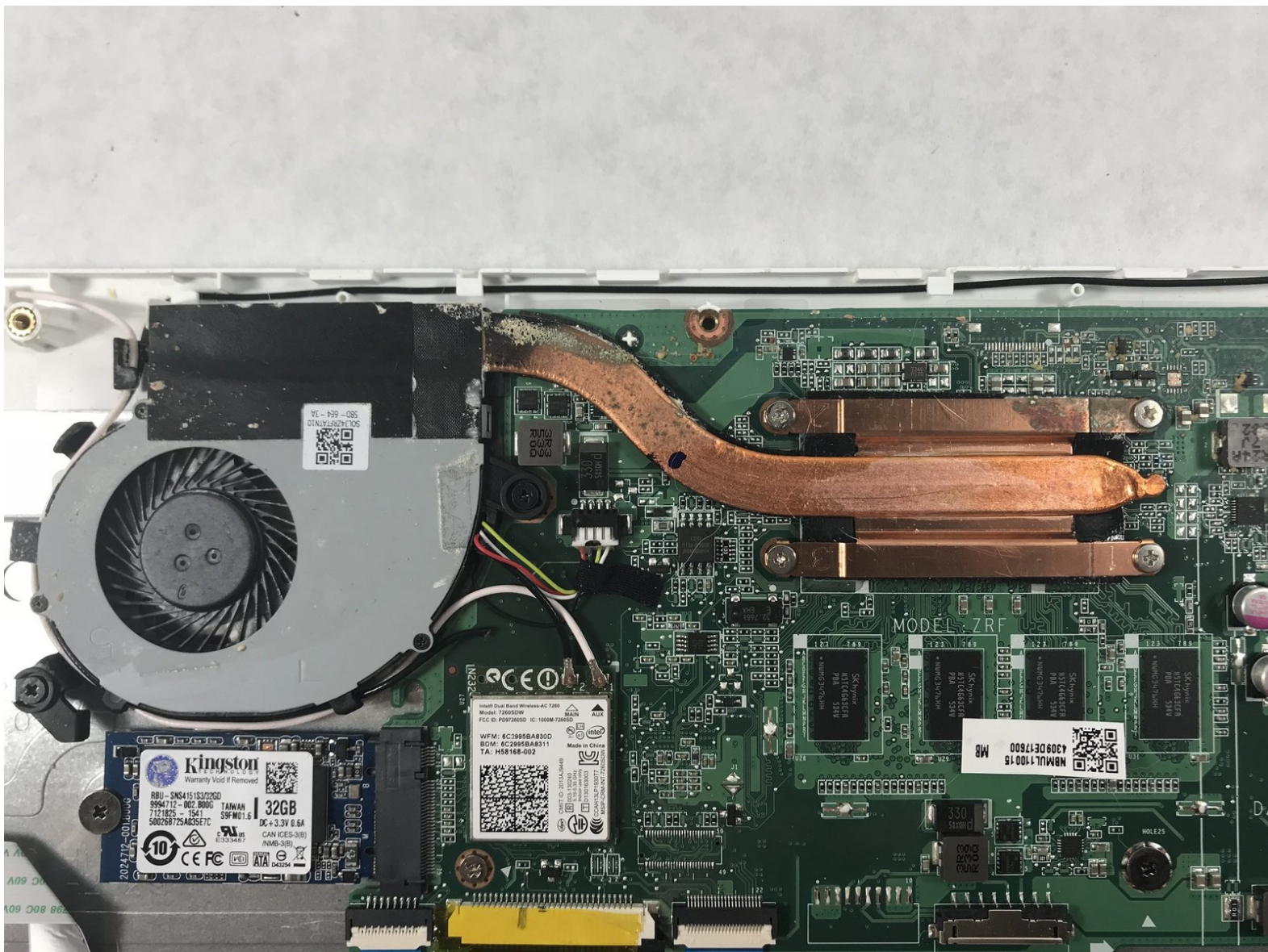




# Acer Chromebook CB5-571-C5XU Fan Replacement

This guide is to help replace a noisy, broken, or damaged fan.

Written By: Erin Moffatt



# INTRODUCTION

One of the device's most important parts is the fan, as it helps keep the processor cooled and stops the computer from overheating. A fan might need to be replaced due to it being noisy, broken, or damaged, and this guide will help replace the fan.



## TOOLS:

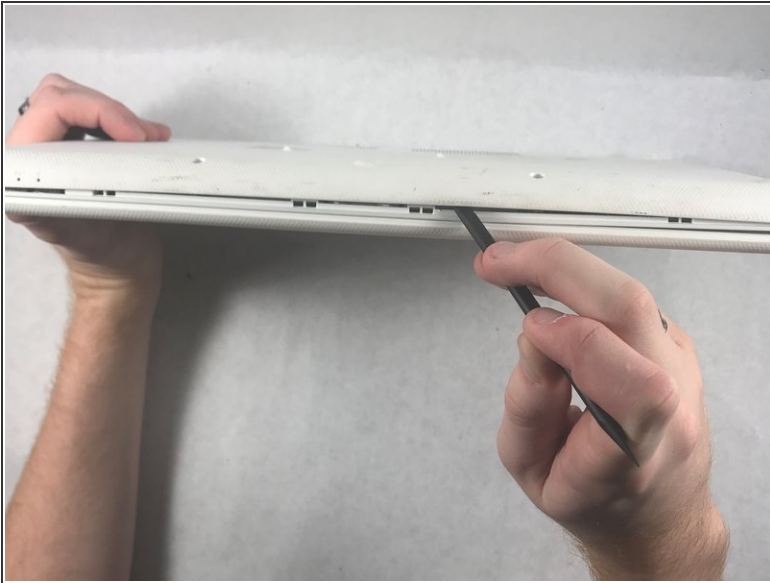
- [Spudger](#) (1)
  - [Phillips #0 Screwdriver](#) (1)
-

## Step 1 — Bottom Case



- Remove the following eighteen screws using a Phillips #0 screwdriver.
- ☑ Remember to have a small bowl or container nearby to place the screws in, so none of the screws get lost.
- ⚠ Make sure the Chromebook is unplugged and shut down, so no files are lost and there is no risk of electrocution.

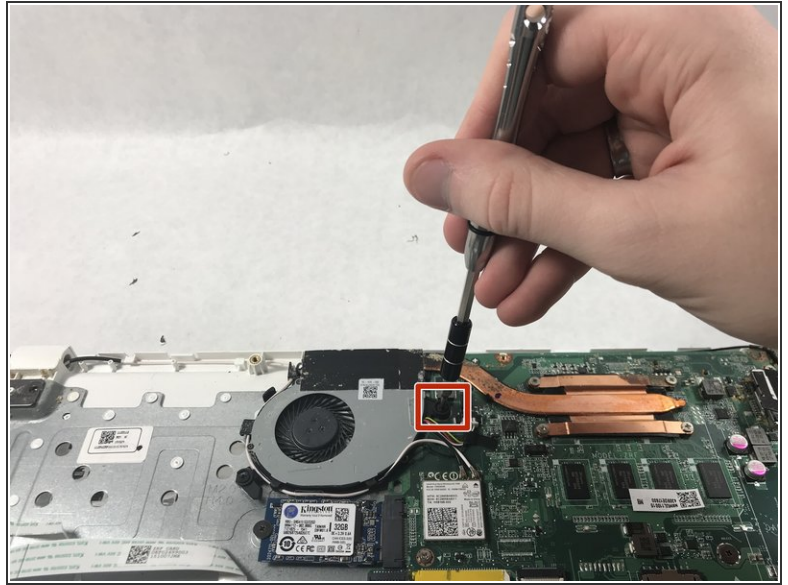
## Step 2



- Using the flat side of the spudger, pry open the bottom case of the laptop.
- ⓘ Working from the front to the back, where it connects to the screen, proved to be the easiest way of popping the case off.

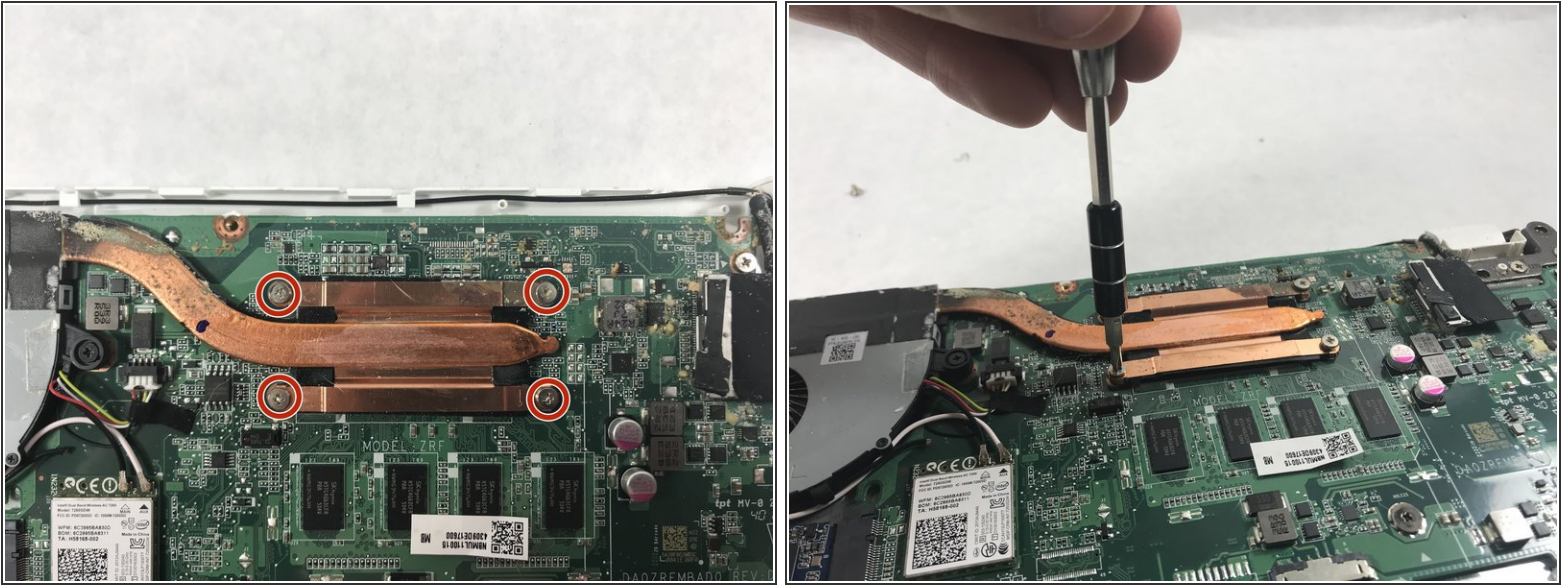


## Step 3 — Fan



- Using a Phillips #0 screwdriver, unscrew the screw to the right of the fan.
- ☑ Remember to have a small container to place the screw in, so it does not get lost.

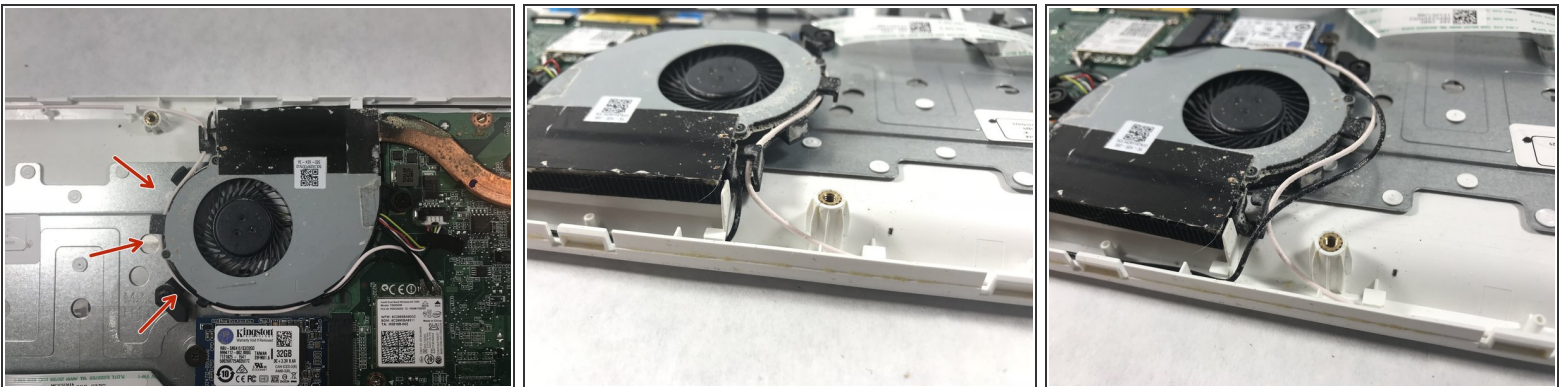
## Step 4



- Using the Phillips #0 screwdriver, unscrew the four screws connecting the heatsink to the motherboard.

☑ Remember to have a safe place to place the screws, so none of them get lost.

## Step 5



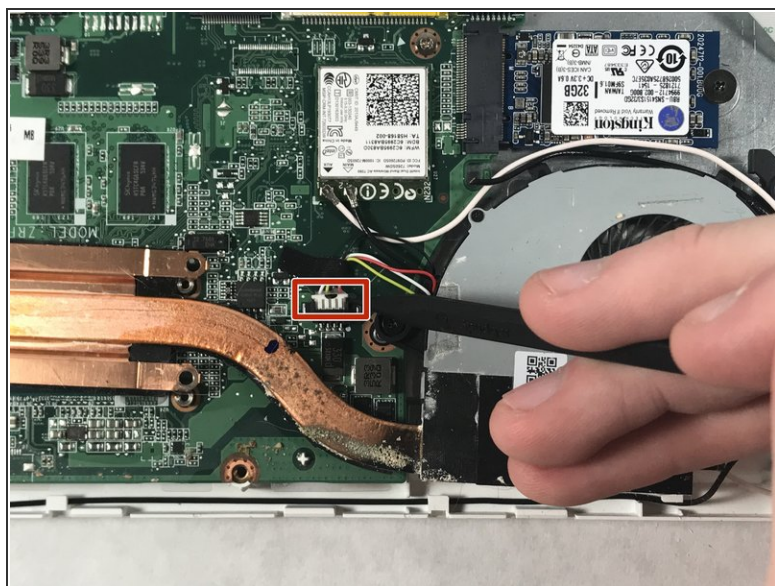
- Carefully unhook the black and white wires from the circumference of the fan.

**i** It might help to use the pointed end of the spudger tool to unhook the wires.

**!** Do not tug too hard on the wires, as they can easily disconnect and snap off from the motherboard.

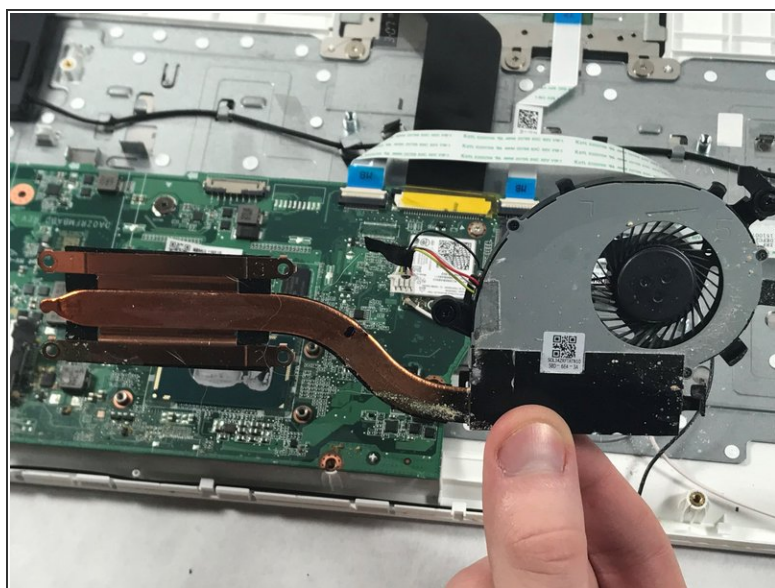


## Step 6



- Using the spudger tool, carefully remove the wires connecting the fan to the motherboard.

## Step 7



- Using the flat side of the spudger, firmly pry the fan off of the components, as well as the heatsink from the motherboard.

To reassemble your device, follow these instructions in reverse order.