



# Acer Chromebook CB5-571-C5XU Solid State Drive Replacement

Replace your Solid State Drive (SSD) with a bigger capacity part.

Written By: David Flint



## INTRODUCTION

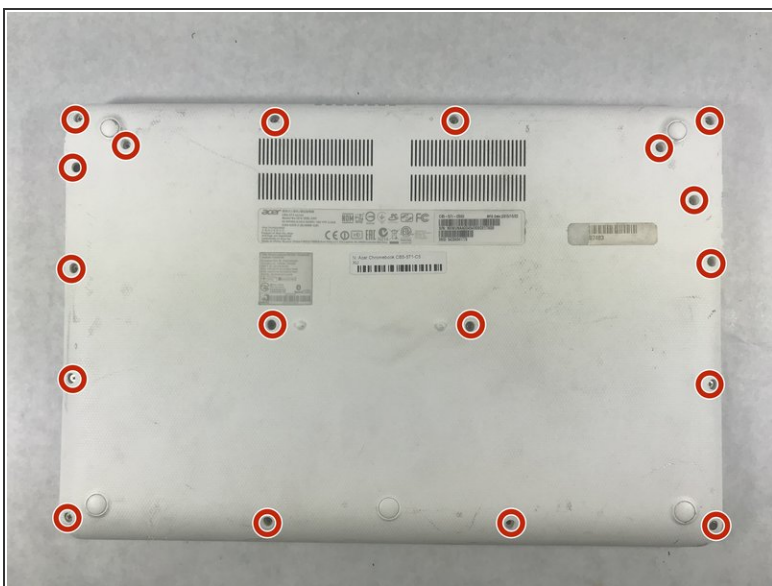
Chromebooks traditionally have very small Solid State Drives (SSD) because most data is stored in the cloud. This particular model has a 32 GB SSD. However, if you have the need for a larger-capacity SSD, this guide will show you how to replace it.



### TOOLS:

- [Spudger](#) (1)
  - [Phillips #0 Screwdriver](#) (1)
-

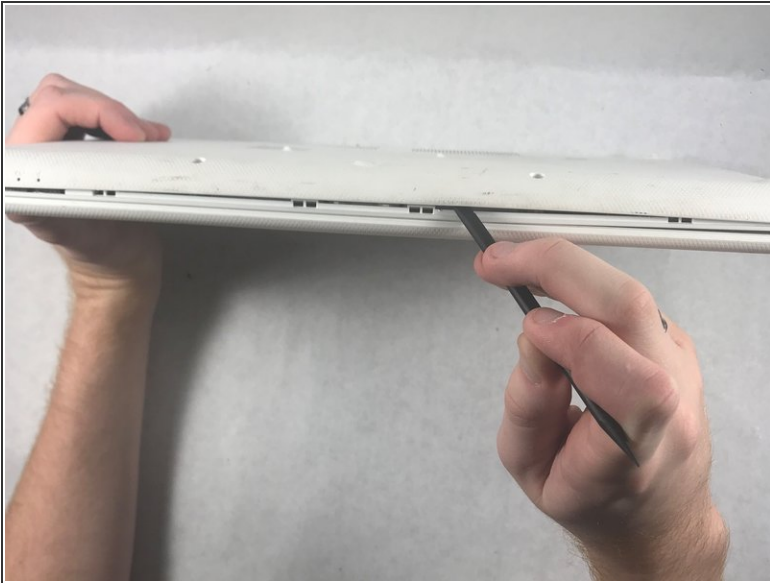
## Step 1 — Bottom Case



- Remove the following eighteen screws using a Phillips #0 screwdriver.
- ☛ Remember to have a small bowl or container nearby to place the screws in, so none of the screws get lost.
- ⚠ Make sure the Chromebook is unplugged and shut down, so no files are lost and there is no risk of electrocution.

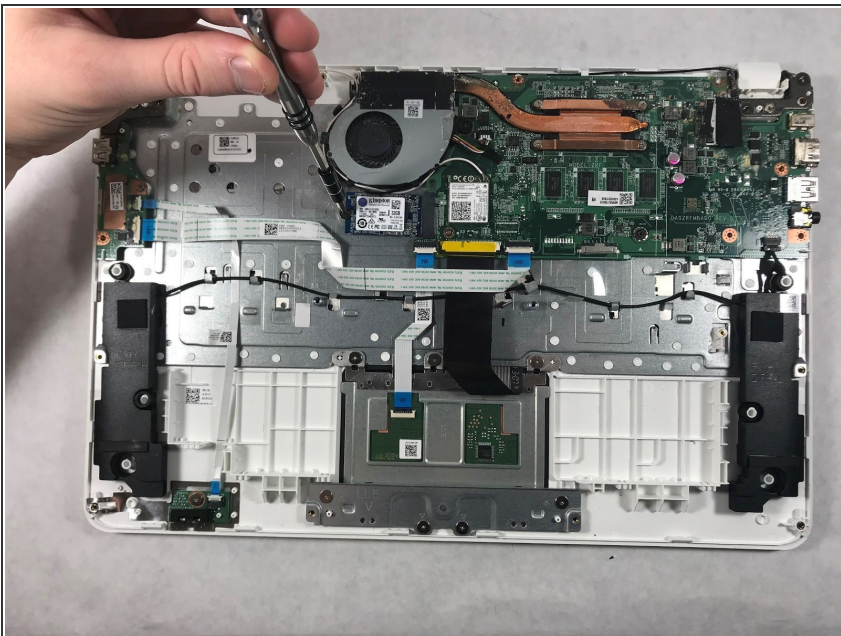


## Step 2



- Using the flat side of the spudger, pry open the bottom case of the laptop.
- ❗ Working from the front to the back, where it connects to the screen, proved to be the easiest way of popping the case off.

## Step 3 — Solid State Drive



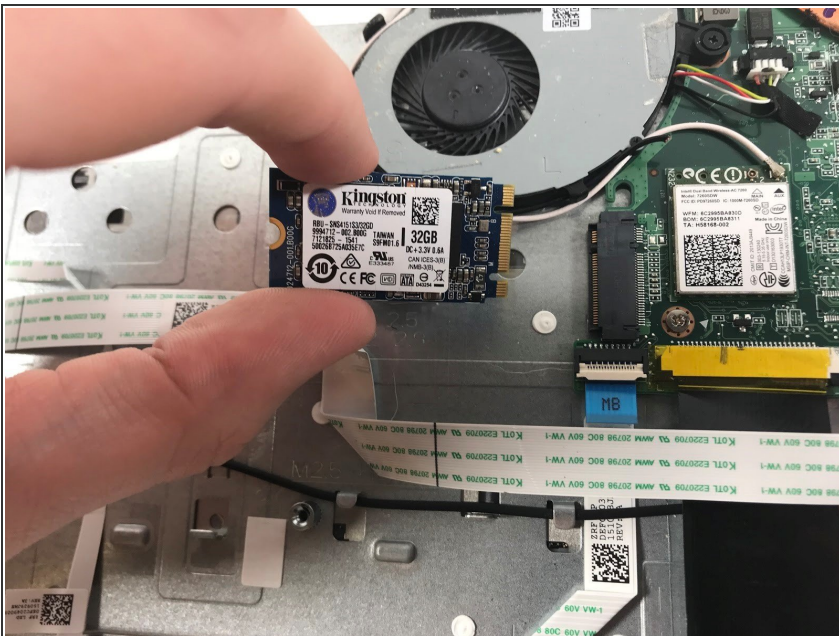
- Using the Phillips #0 Screwdriver, unscrew the single screw holding the Solid State Drive in place.

## Step 4



- Gently lift the Solid State Drive upwards at an angle until it stops.
- ⚠ Be careful not to lift the Solid State Drive past where it stops, or you will risk breaking the hardware.

## Step 5



- Pull the Solid State Drive out from the socket in the direction of the angle at which it was resting.
- ⓘ The Solid State Drive should pull out with little effort. If it is resisting, do not pull harder, as this risks damage to the part.

To reassemble your device, follow these instructions in reverse order.