

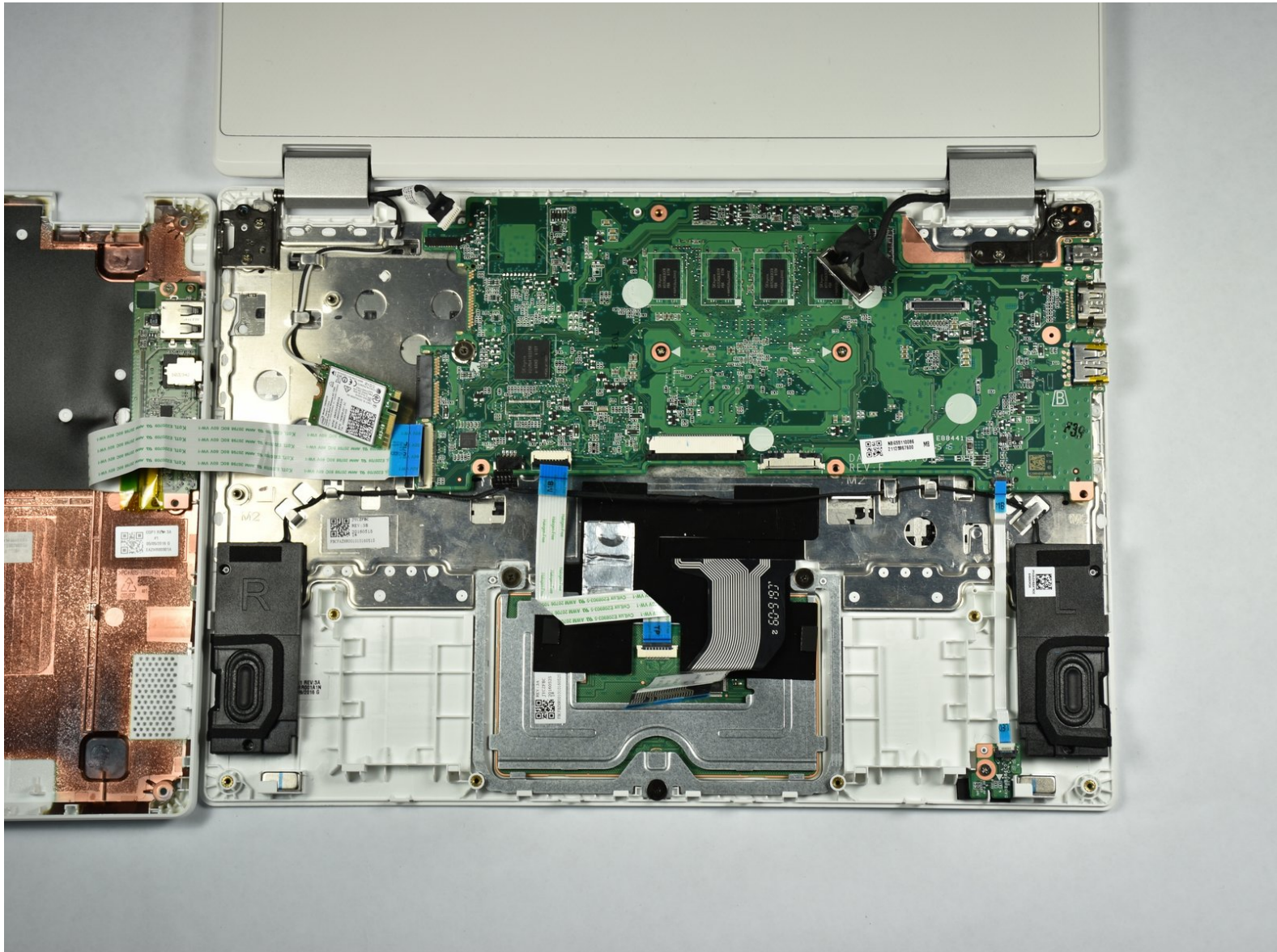


# Acer Chromebook R11 CB5-132T-C1LK

## Motherboard Replacement

This guide will replace the motherboard in the Acer Chromebook R11 CB5-132T-C1LK.

Written By: Elizabeth Crisologo



## INTRODUCTION

Replacing a motherboard is usually a last resort option as the motherboard is where all the data and files are in a Chromebook. Only replace a Chromebook motherboard if you are certain it is a motherboard that is malfunctioning.



### TOOLS:

- [iFixit Opening Tools](#) (1)
- [Phillips #0 Screwdriver](#) (1)
- [Spudger](#) (1)
- *Optional*
- [Tweezers](#) (1)



### PARTS:

- [Acer Chromebook CB5-132T-C1LK Motherboard](#) (1)

## Step 1 — Bottom Panel



- Using a Phillips screwdriver, remove all eleven 7.0 mm screws from the bottom of the Chromebook.

## Step 2



- Find the seam along the edge of the device.
- Wedge a finger into the groove and separate the panel from the device. If necessary, use a spudger.

⚠ The panel will still be connected to the device by internal wiring, so pull it off with some caution. It is best to flip the panel to the side once the seam has been broken.

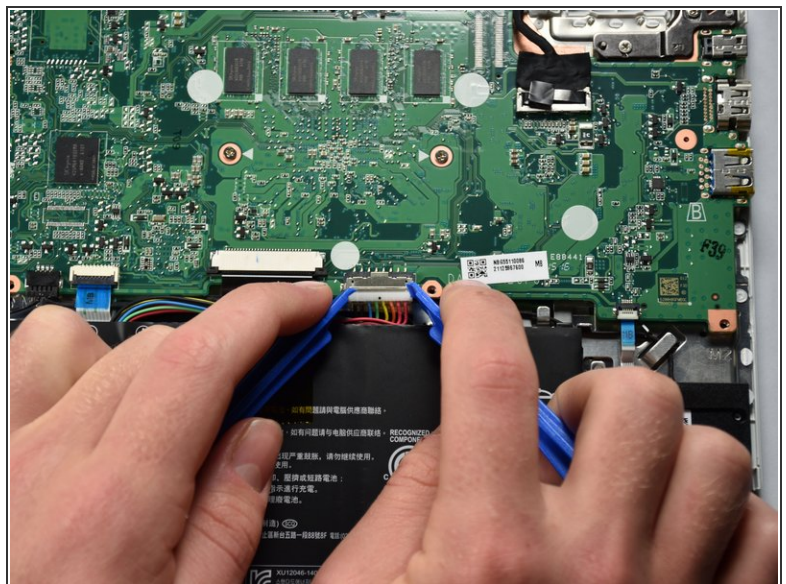


## Step 3 — Battery



- Remove the two 4.5 mm Phillips screws located at the sides of the battery.

## Step 4

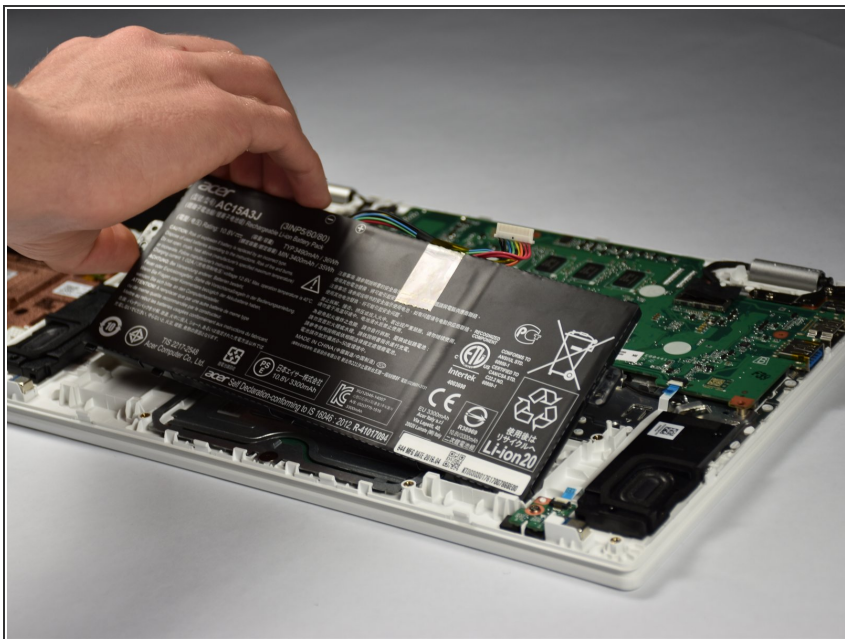


- Grip the battery connection using two plastic opening tools.
- Carefully but firmly, pry the connector from its socket by pulling it towards the battery.
- ☞ When reconnecting the battery to the motherboard, place the red wires closer to the edge of the device and the black wires towards the center.

This document was generated on 2019-10-09 08:25:26 PM (MST).

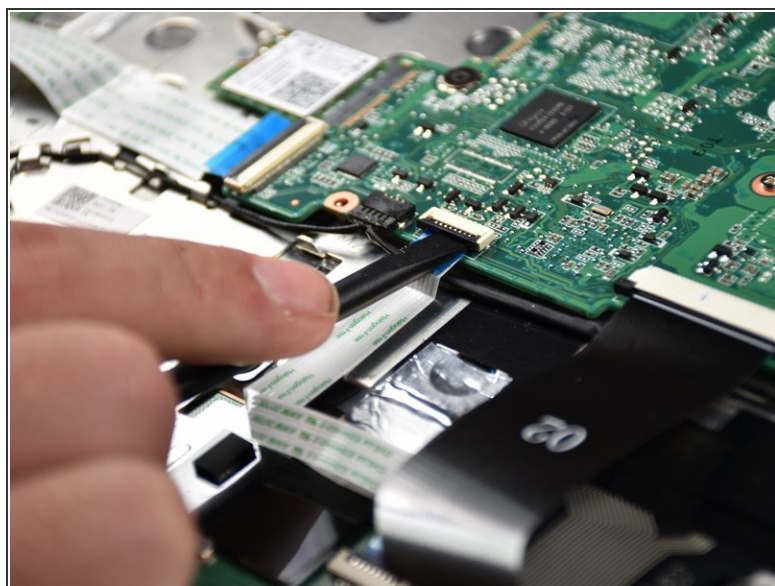
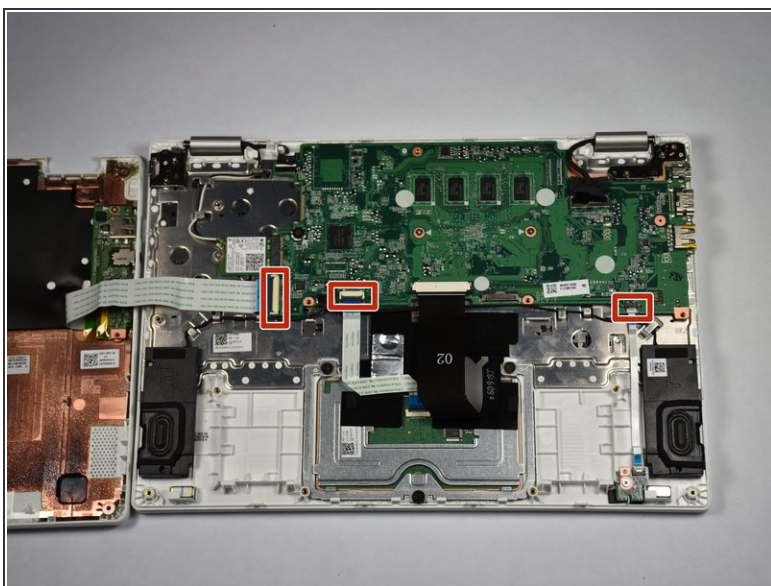


## Step 5



- Lift the battery out by pulling upward.

## Step 6 — Motherboard



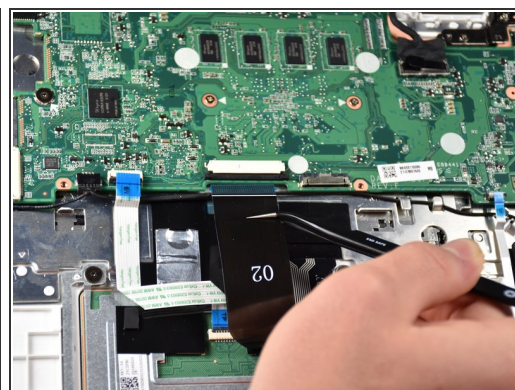
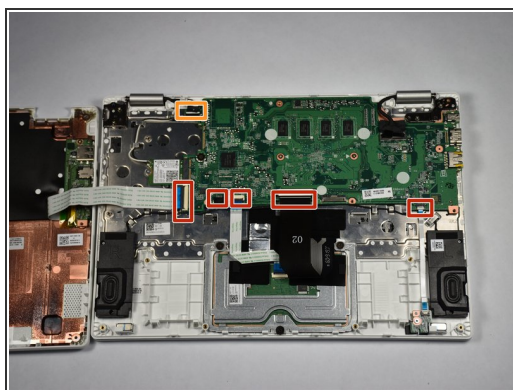
- Orient the laptop so the motherboard side is further away from you in a landscape position.
- Use the flat end of the spudger to lift the the ZIF connector retaining flaps securing the three small ribbon cables.

## Step 7



- Pull out the locking mechanism of the touchpad ZIF connector with the narrow end of the spudger.

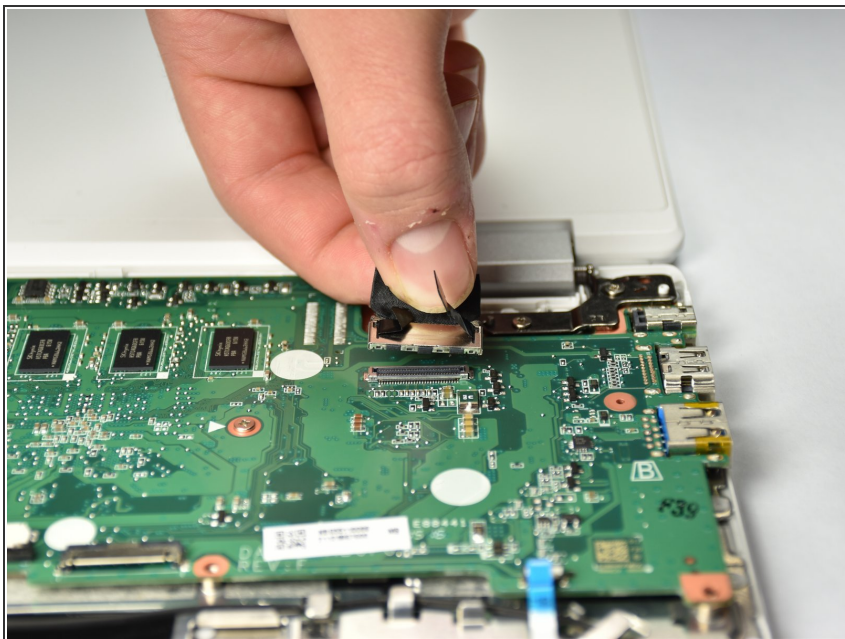
## Step 8



- Using tweezers, pull the five ribbon cables near the bottom of the motherboard from their sockets.
- Using tweezers, pull the single cable near the top left of the motherboard from its socket.



## Step 9



- Remove the screen connector from the motherboard by pulling directly upward on the black tabs.

## Step 10



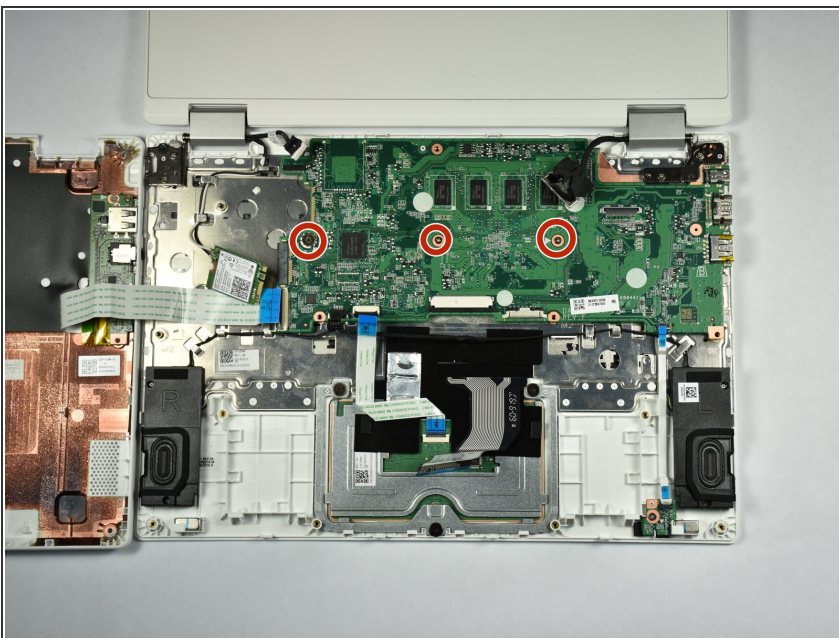
- Remove the 2.0 mm screw from the Wi-Fi card.

## Step 11



- Slide the Wi-Fi card out from the port with tweezers.

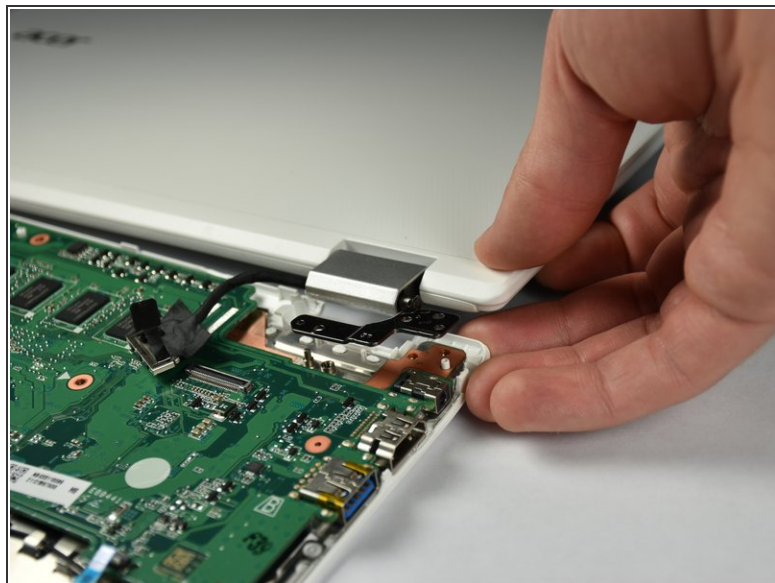
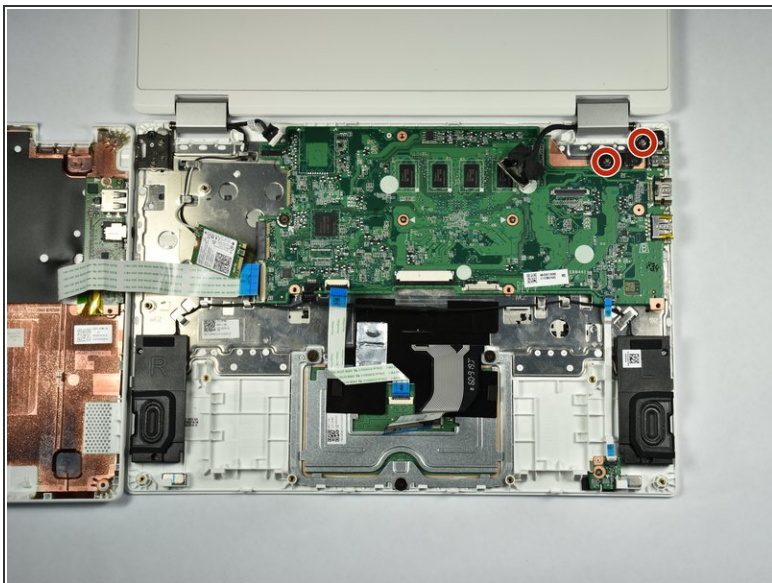
## Step 12



- Remove the two 4.5 mm screws and a 2.0 mm screw from the middle of the motherboard.

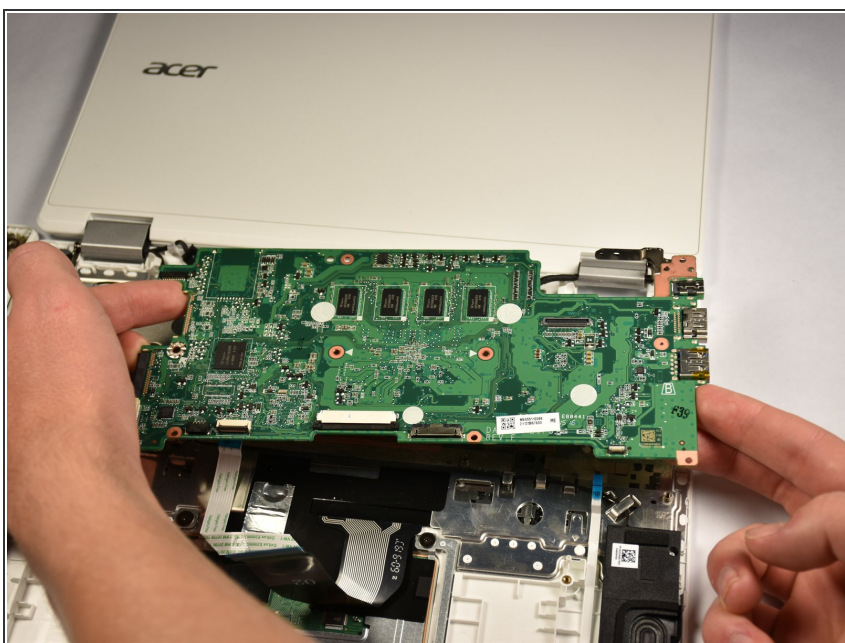


## Step 13



- Unscrew the two 4.5 mm screws from the top right metal tab connected to the motherboard.
- Lift the right corner upward to remove the metal tabs from the motherboard

## Step 14



- Lift the motherboard upward to completely remove it from the base.

To reassemble your device, follow these instructions in reverse order.