



Acer Chromebook R11 Wireless Card Replacement

Replace the wireless card of your Acer Chromebook R11.

Written By: Sean Harter



INTRODUCTION

In order to replace the wireless card in your Acer Chromebook R11, follow these steps. You should wear an anti-static wrist strap to avoid damaging your device.



TOOLS:

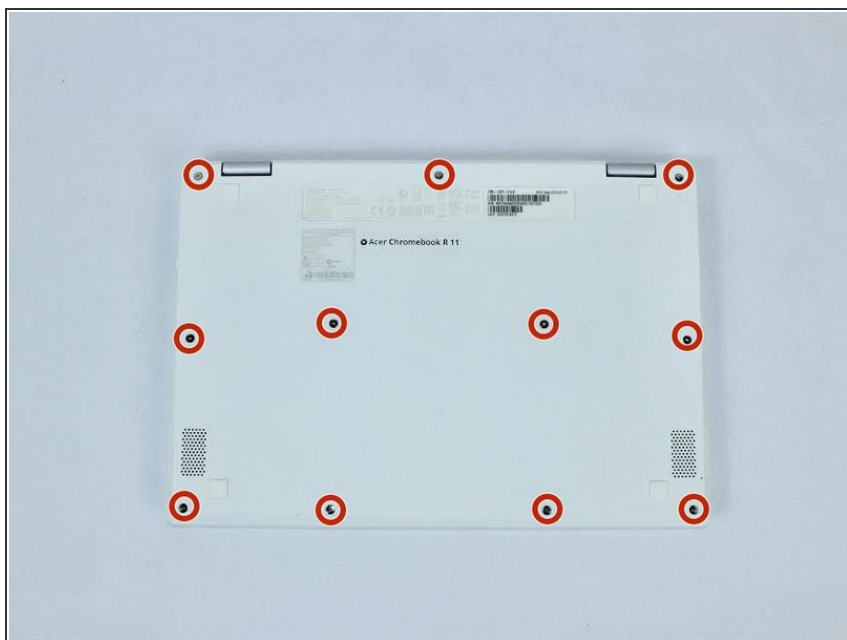
- [Phillips #1 Screwdriver](#) (1)



PARTS:

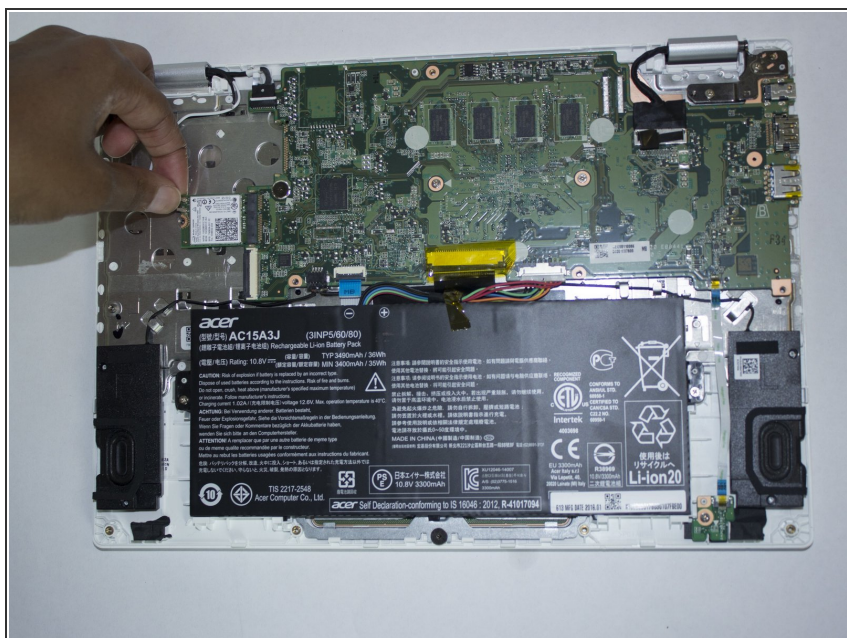
- [Acer Chromebook CB5-132T-C1LK Wi-Fi Board](#) (1)

Step 1 — Wireless Card



- Remove eleven 7.23mm Phillips #1 screws from the back panel.
- Using a spudger, carefully separate back panel from main body.
- The back panel is still attached to the main body by a ribbon cable. Use care not to damage the cable.

Step 2



- Disconnect the two antenna cables (one black and one white) that are attached to the wireless card.
- ☑ Note the position of the black and white antenna cables on the card.

Step 3



- Remove the single 2.85 mm Phillips #1 screw that secures the wireless card.

Step 4



- Carefully slide the wireless card out of its socket on the motherboard.

To reassemble your device, follow these instructions in reverse order.