



# Acer E5-571-54FL CPU Replacement

Use this guide to replace the CPU in your Acer E5-571-54FL.

Written By: Jennifer Hancock



## INTRODUCTION

The central processing unit (CPU) of a computer is essentially the brains of the computer. The CPU functions by carrying out the instructions of a computer program and performing basic arithmetical and logical equations. If you find that your computer is glitching out or showing a blue screen of death, the CPU may be faulty. Follow the instructions in this guide to replace the CPU in your laptop.



### TOOLS:

- [ESD Safe Tweezers Blunt Nose](#) (1)
- [Small Phillips Head Screwdriver](#) (1)
- [Metal Spudger](#) (1)
- [Metal Spudger Set](#) (1)
- [Phillips #0 Screwdriver](#) (1)
- [iFixit Opening Tools](#) (1)
- [Spudger](#) (1)
- [Tweezers](#) (1)

## Step 1 — Battery



- ⚠ Make sure the laptop is shut down.
- Flip the laptop upside down with the battery facing towards your body and locate the battery lock circled in red.

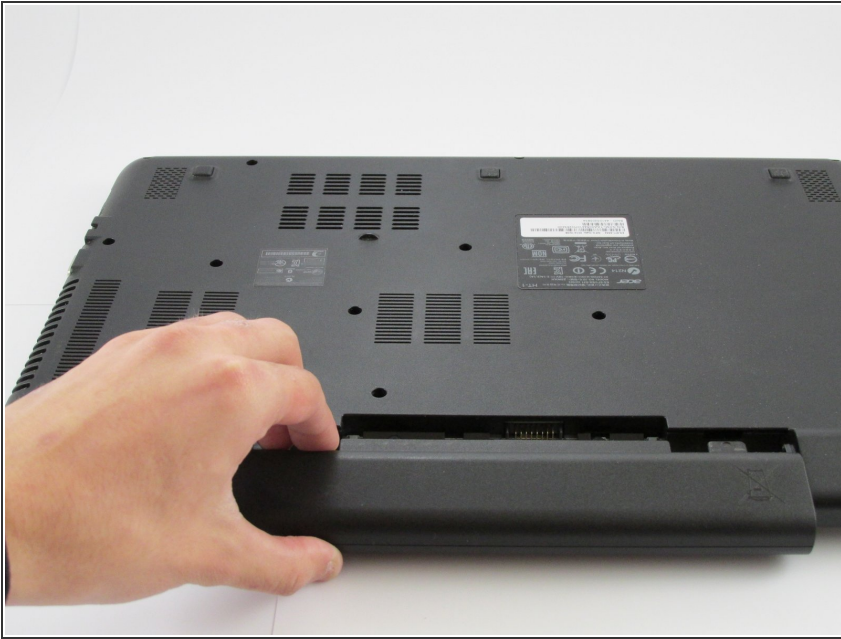
## Step 2



- Use a small screwdriver or pen and place it into the battery lock as shown.
- Gently slide it to the left until you hear the battery release.

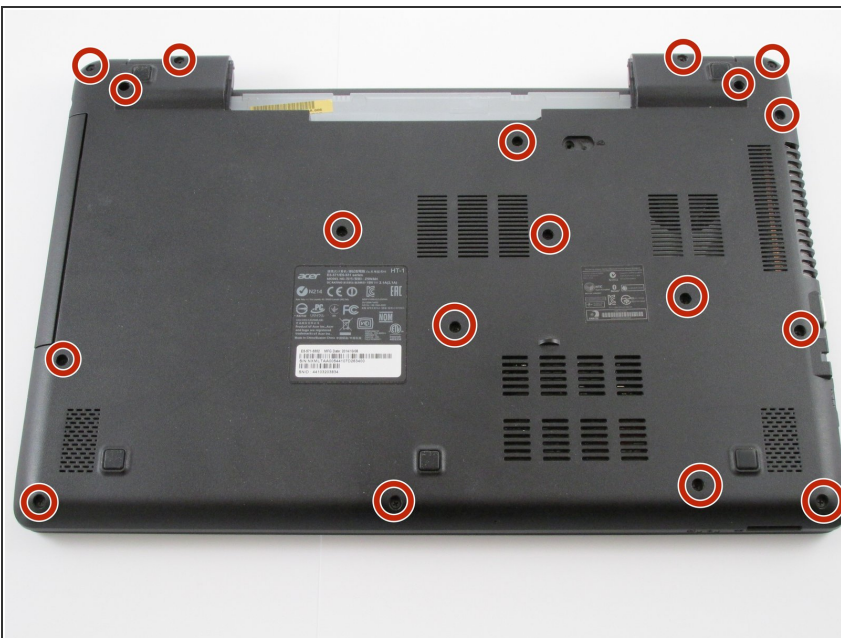


## Step 3



- Pull the battery towards your body as shown in the picture.

## Step 4 — Keyboard



- Remove all eighteen 8 mm Phillips #0 screws with a Phillips #0 screwdriver and set aside.
- ⓘ All of these screws are identical, 8 mm, Phillips #0 screws.

## Step 5

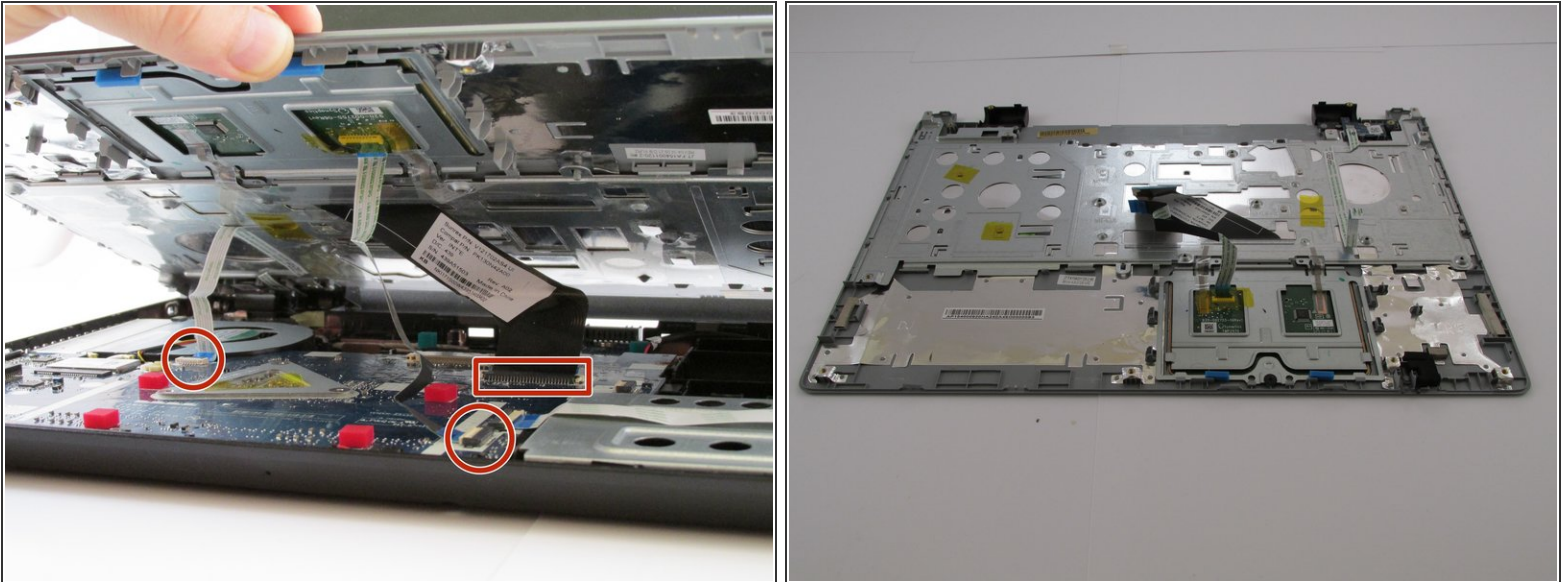


- Move around the edge with metal spudger and carefully pry apart the keyboard.

- Be careful not to break the plastic clips.

⚠ Once all edges are loose, do not remove the keyboard until after next step!

## Step 6

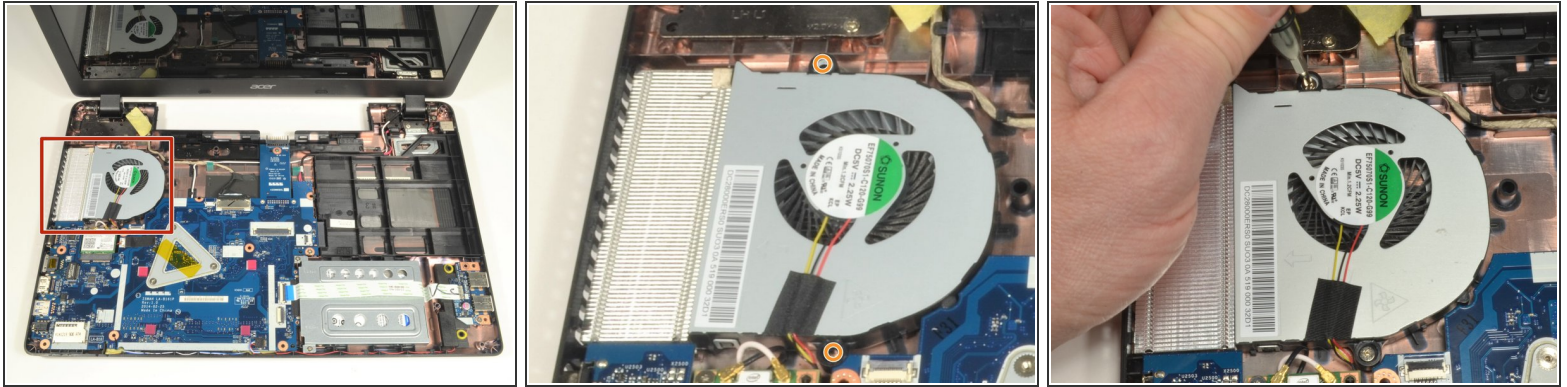


- Carefully detach the three ZIF ribbons connected to the motherboard by flipping up the white hinge.

- Lift up on the keyboard and the whole top should come right off, including the touchpad.

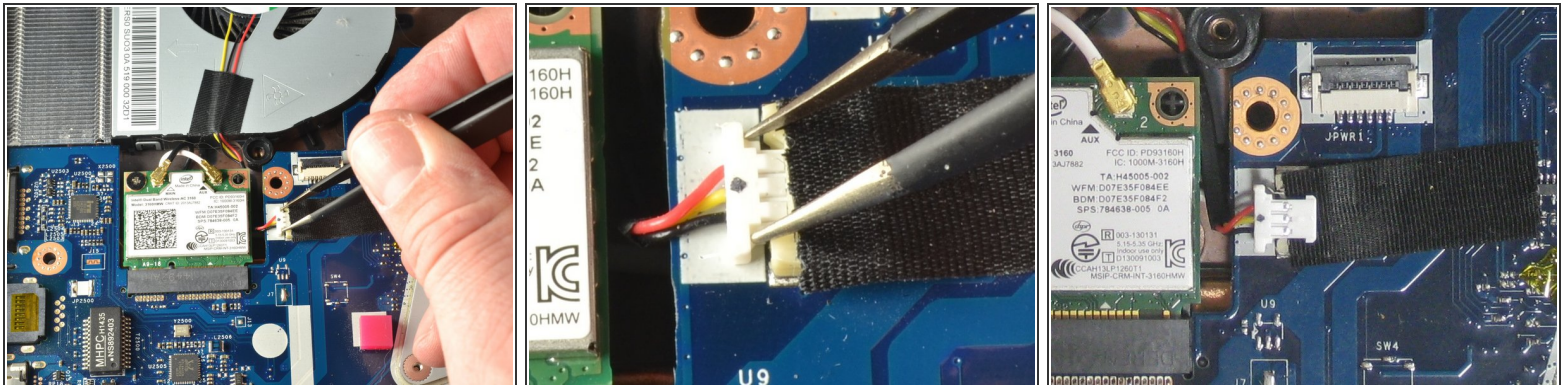


## Step 7 — Cooling Fan



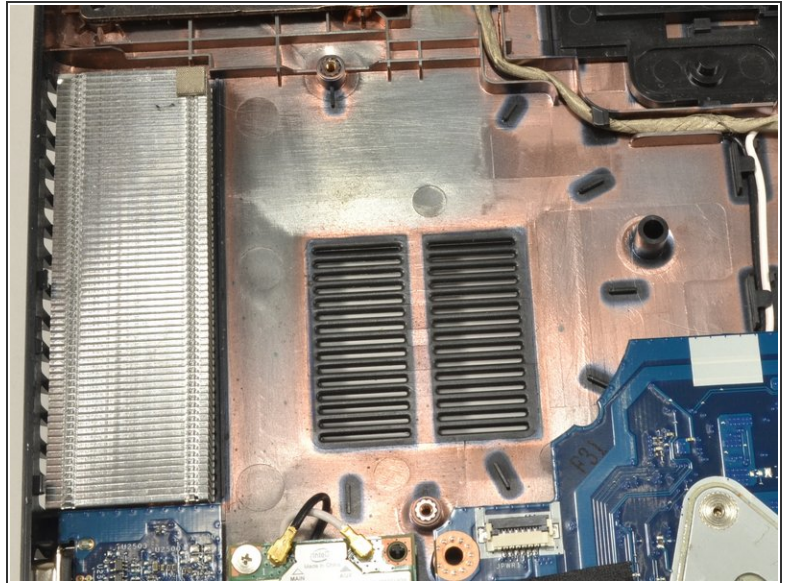
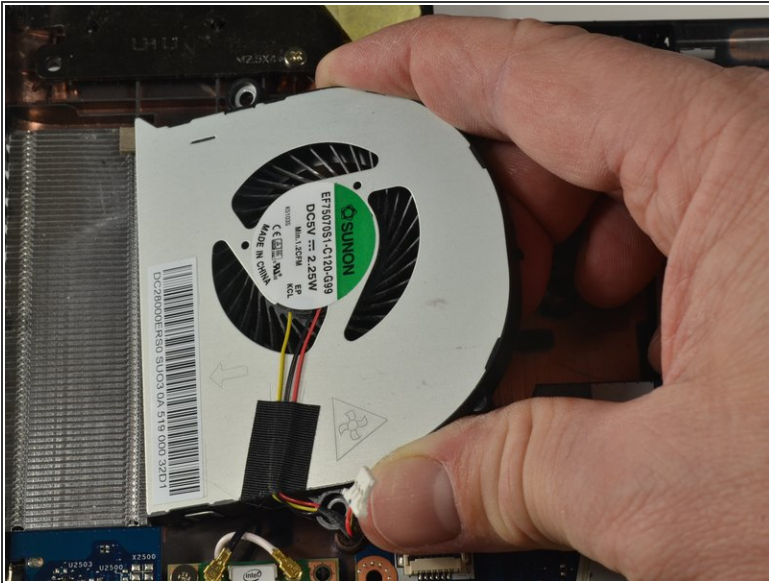
- The CPU Cooling Fan is in the upper left corner of the laptop.
- Using a #0 Phillips screwdriver, remove the two 4.5mm screws holding the fan to the case.

## Step 8



- Place the tips of the ESD safe pointed tweezers between the plug and socket of the fan connection.
- Gently push left to disconnect the fan plug.
- Move the fan connector and wires free of the motherboard and WiFi card.

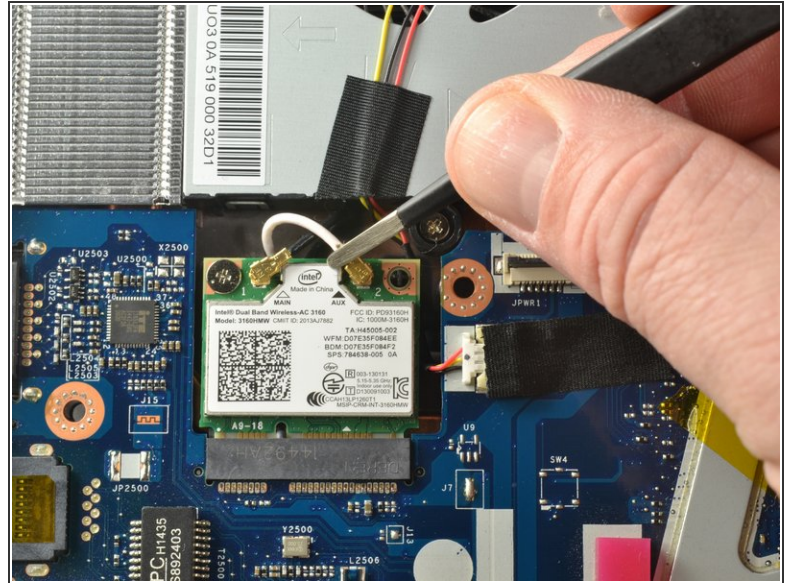
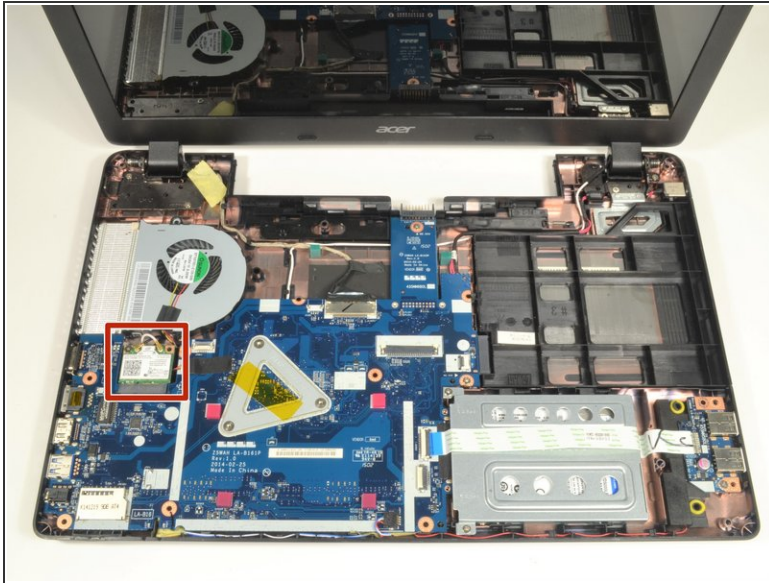
## Step 9



- Lift the curved end of the fan about 30 degrees.
- Remove the fan by moving your hand up and to the right until it is clear of the case.
- ⓘ If you feel resistance, check to be sure the fan connector and wires are not stuck under the motherboard or WiFi card.



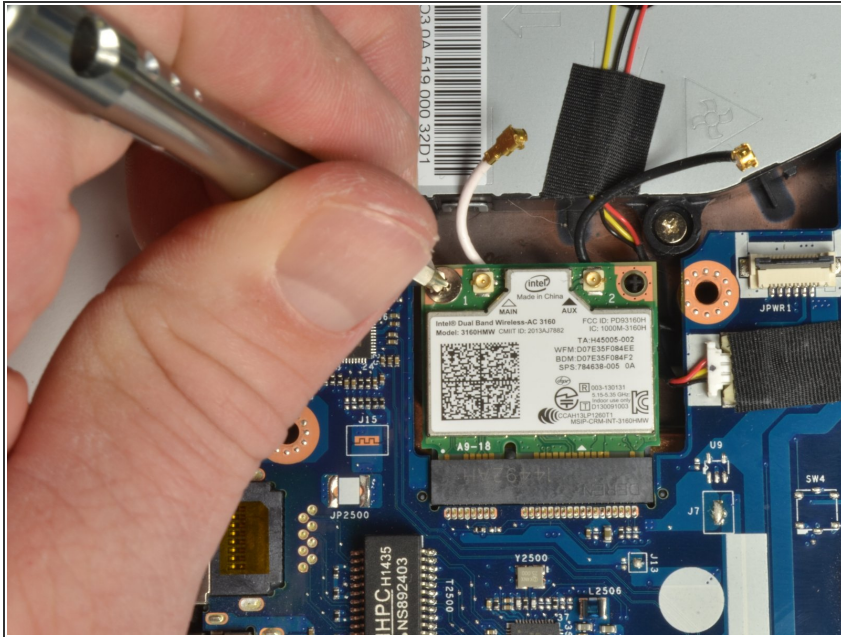
## Step 10 — WiFi Card



- The WiFi card is just below the fan with a white coaxial cable and a black coaxial cable attached.
- Using ESD safe blunt nose metal tweezers, grab just behind the brass connection on the white coaxial cable attached to the WiFi card.
- Carefully lift up and forward to disconnect the wire.
- Repeat both procedure one and two to remove the black coaxial cable.

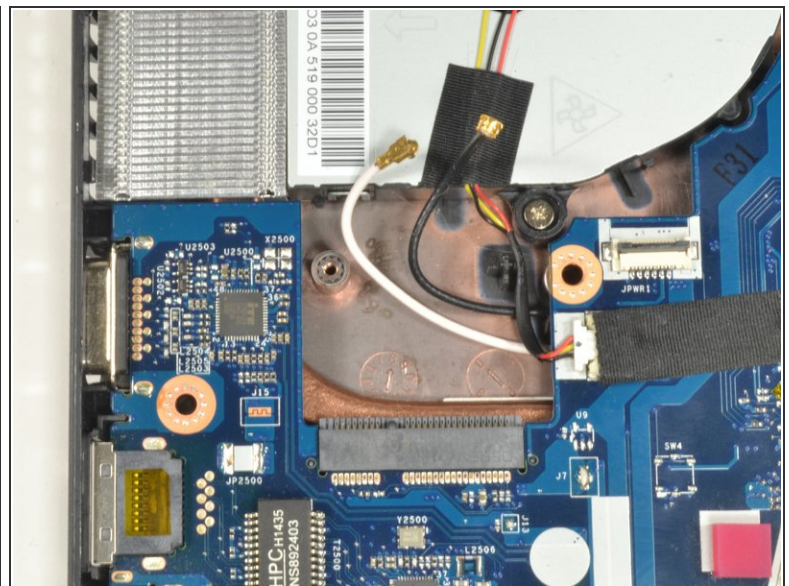
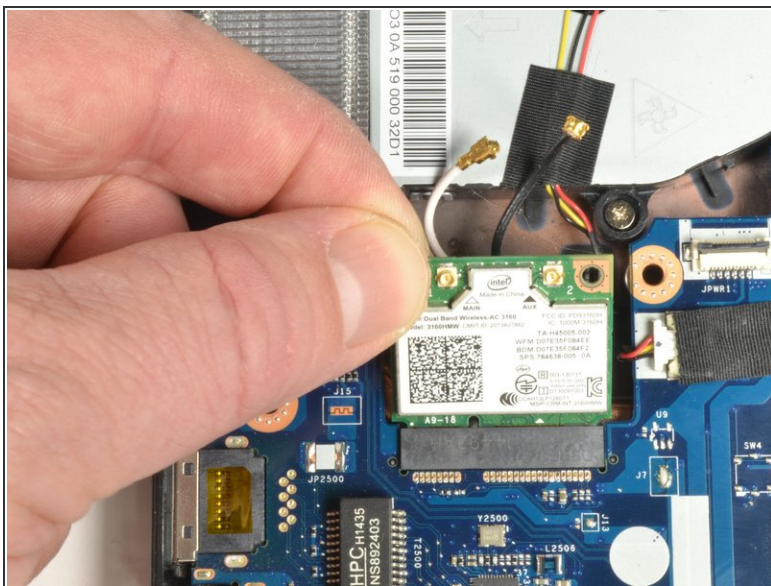


## Step 11



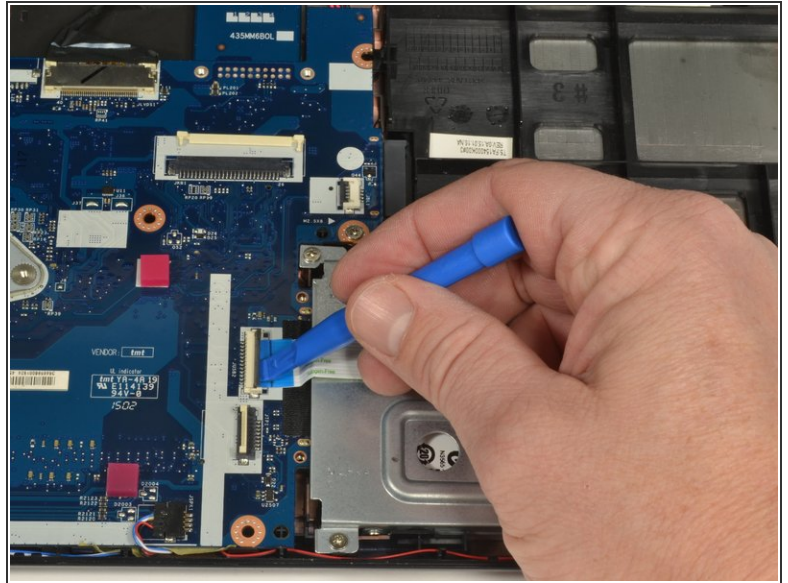
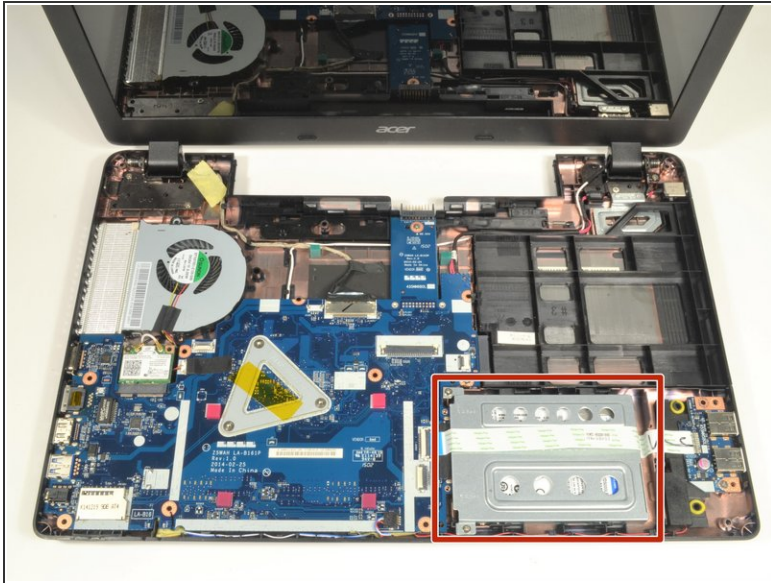
- Using a #0 Phillips screwdriver, remove the 3mm screw from the upper left corner of the WiFi card.
- ⓘ The edge of WiFi card will lift up as the screw is removed.

## Step 12



- Grab the upper left corner of the WiFi card with your fingers.
- Gently pull the WiFi card away from the socket.

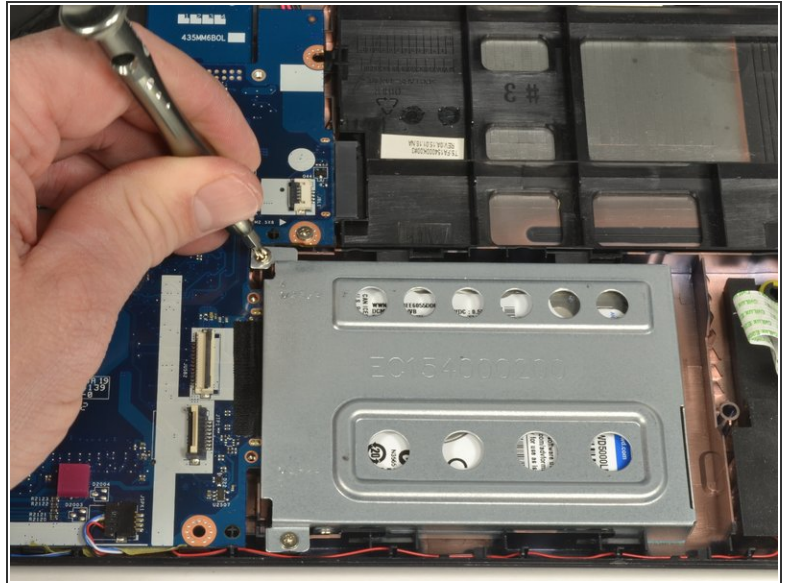
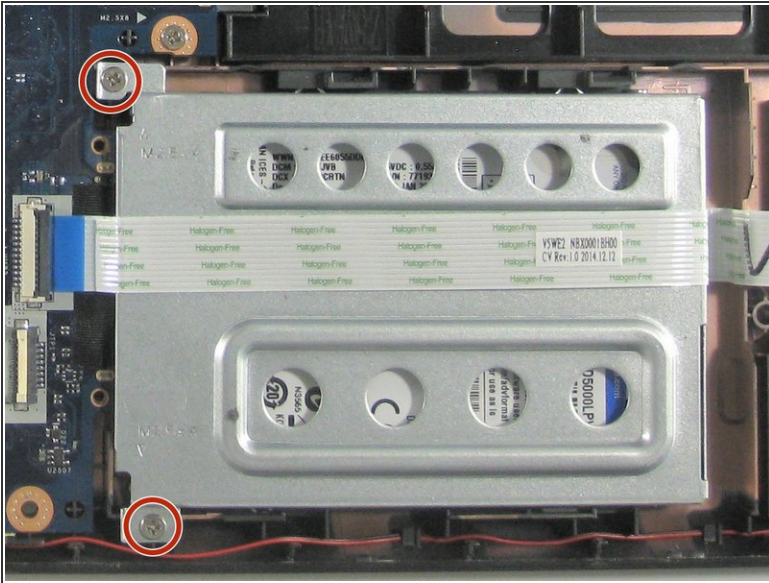
## Step 13 — Hard drive



- The hard drive and carriage are at the lower right of the laptop.
- Using the plastic opening tool, carefully lift up on the **black** locking tab of the ZIF connector to release the USB port ribbon cable.
- Move the USB port ribbon cable out of the way

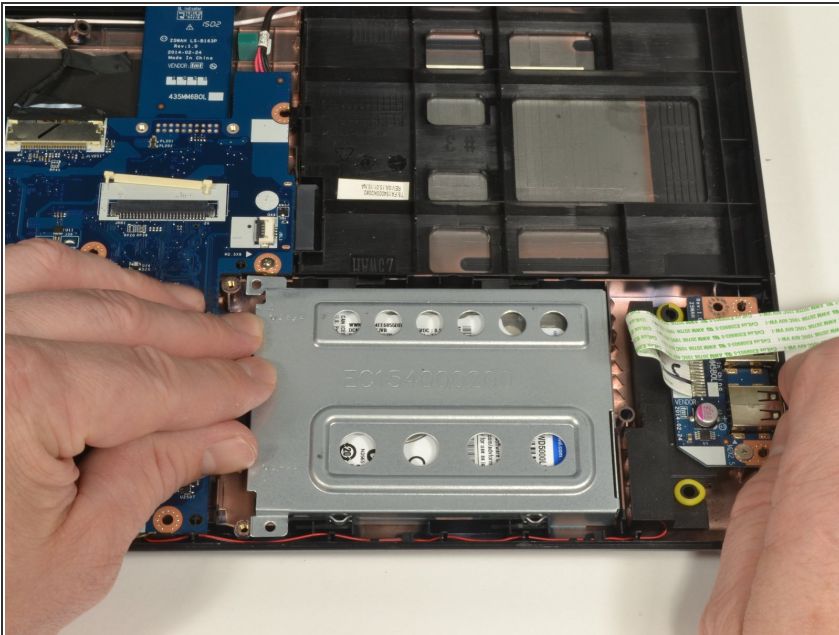


## Step 14



- Using a #0 Phillips screwdriver, remove the two 4mm screws securing the hard drive carriage in place.

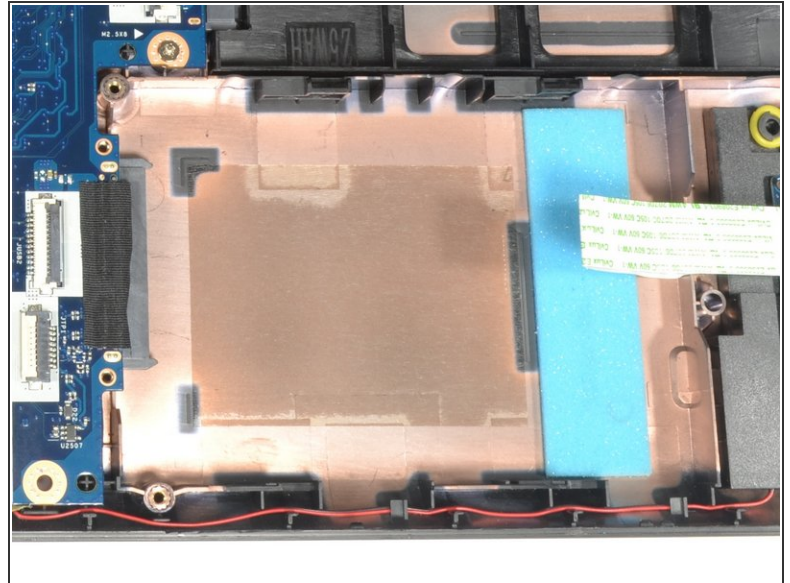
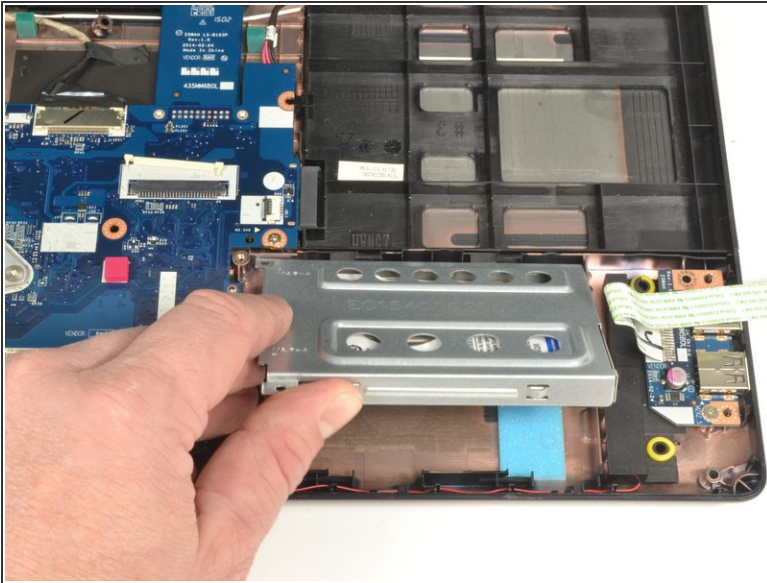
## Step 15



- Hold the right side of the laptop in place with your right hand.
- Put the fingers of your left hand along the top edge of the hard drive carriage.
- Push the hard drive carriage towards your right hand to disconnect it from the motherboard.
- ⓘ This procedure may require more force than other procedures.



## Step 16



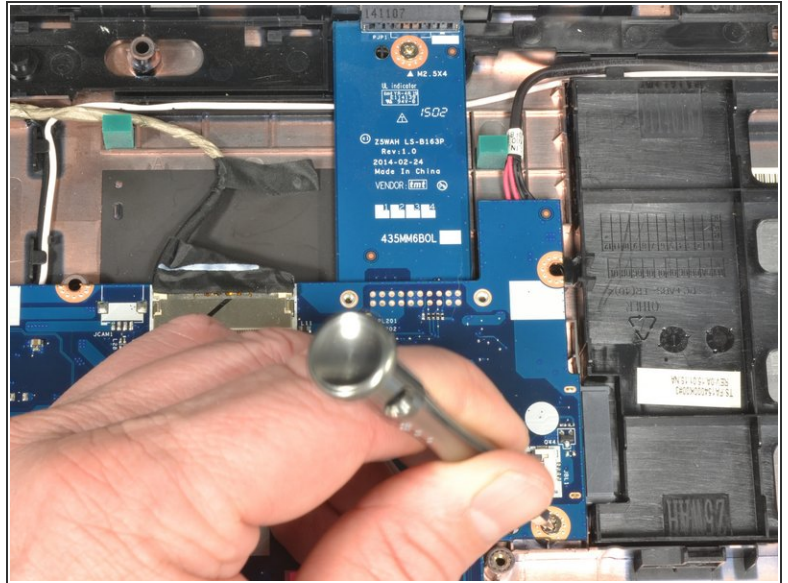
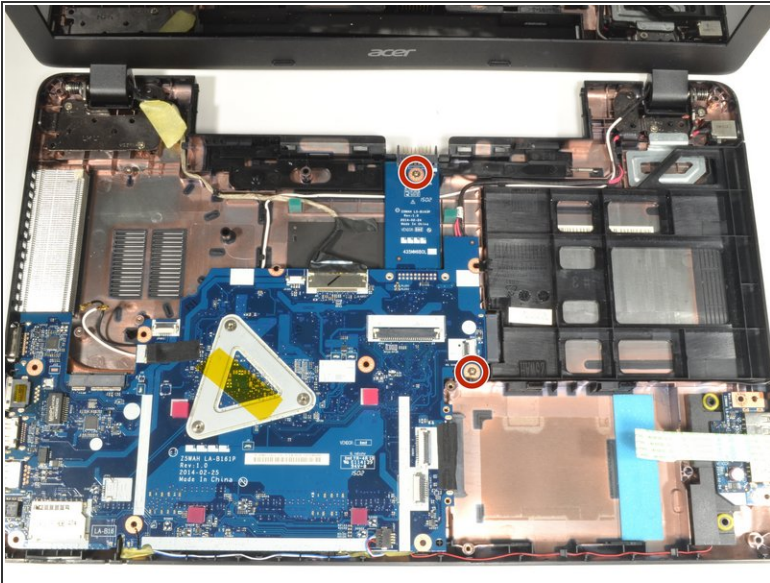
- Lift up on the edge of the hard drive carriage closest to your body to remove the carriage.
- ⓘ If doing the motherboard replacement guide, skip the next step.

## Step 17



- There are two 3mm Phillips screws holding the hard drive into the carriage. One on either side of the carriage.
- Hold the hard drive carriage with your non-dominant hand along one side. Ensure one of the Phillips screws is visible.
- Using a #0 Phillips screwdriver, remove the 3mm screw to release the side of the hard drive from the carriage.
- Repeat the two previous procedures to remove the second 3mm Phillips screw freeing the hard drive from the carriage.

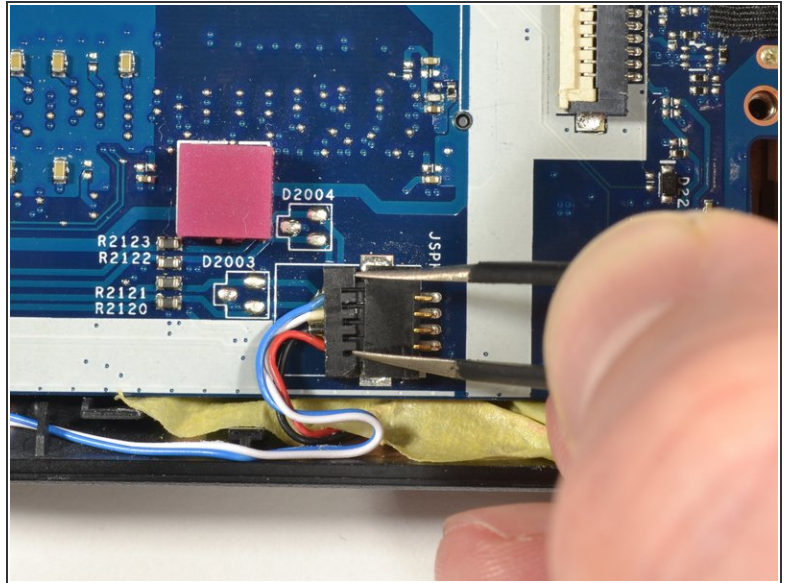
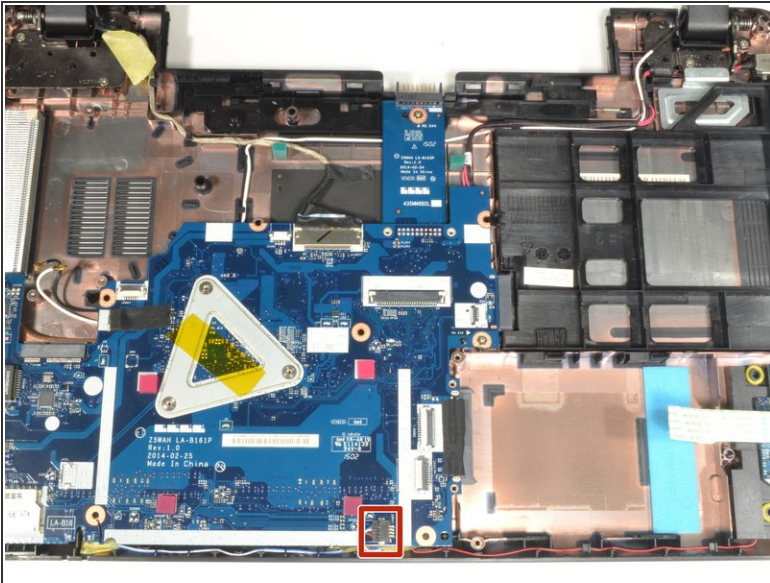
## Step 18 — Motherboard



- Using a #0 Phillips screwdriver, remove the two 4mm screws and set them aside.

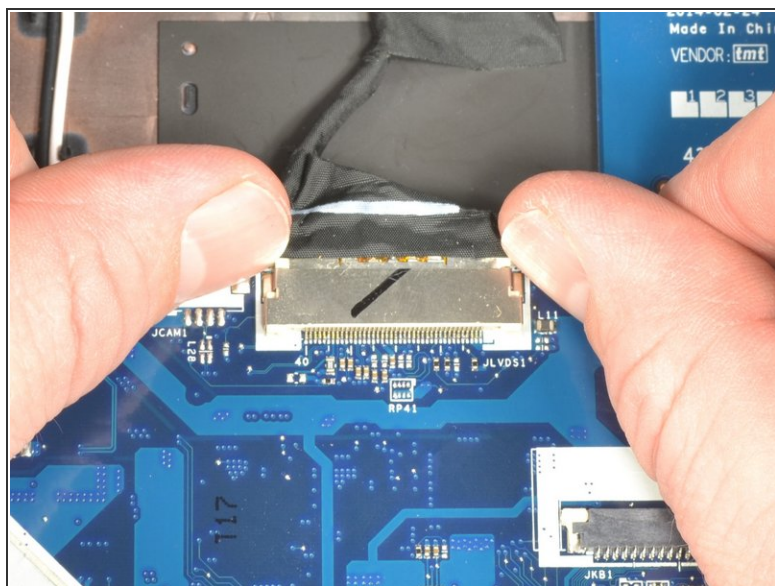
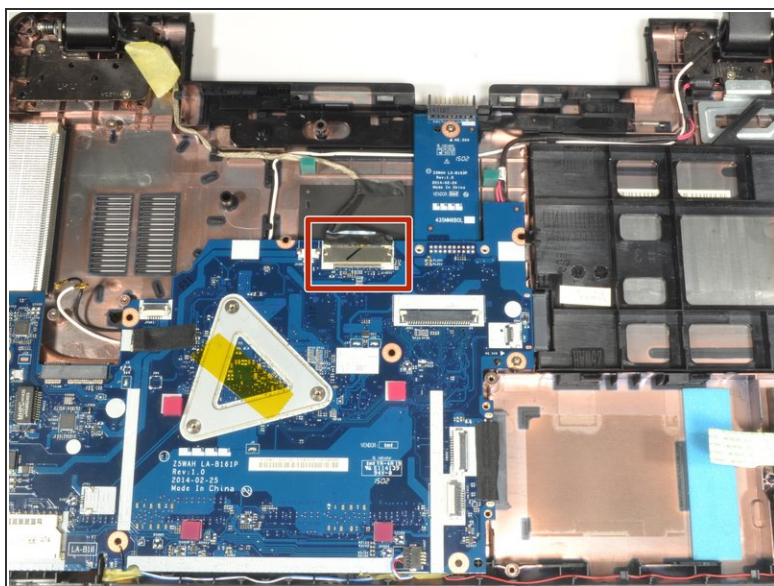


## Step 19



- The three wire speaker connection is centered at the edge of the motherboard closest to your body.
- Place the tips of the ESD safe pointed tweezers between the plug and socket of the speaker connection.
- Gently push left to disconnect the speaker plug.

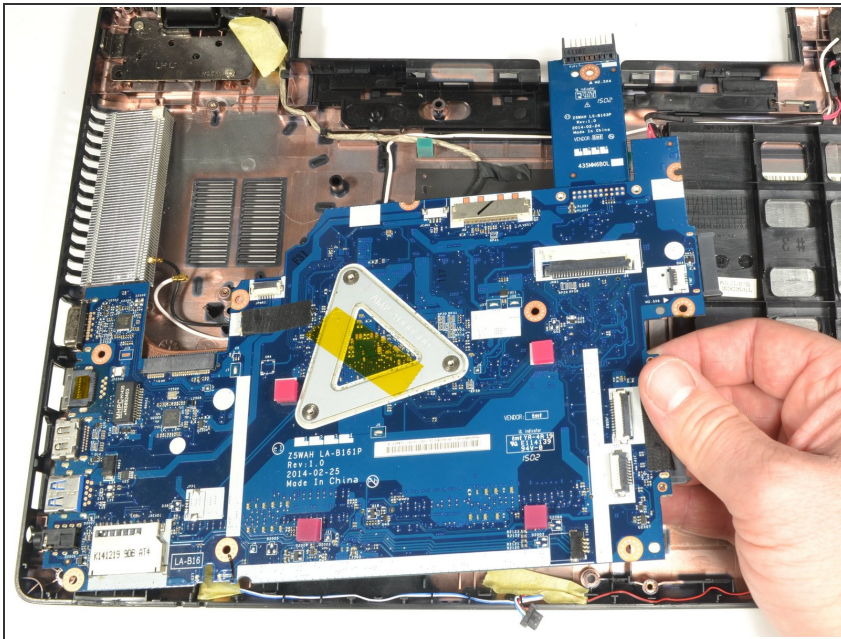
## Step 20



- The screen connection is centered on the motherboard furthest from your body.
- With your fingernails on each side of the plug, gently push away from your body to disconnect it.

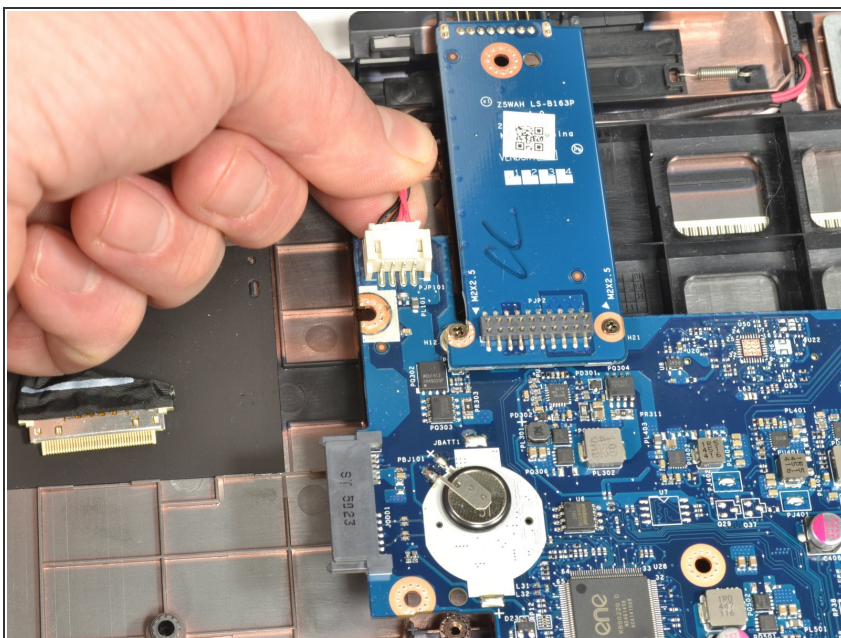


## Step 21



- Carefully lift up on the right edge of the motherboard near the hard drive connector.
- With minimal force, pull the motherboard to the right freeing the ports on the left from the case.
- Put down the right side and allow the motherboard to rest in the case.
- ⓘ There is still one connection to be removed which lies underneath the motherboard.
- Lift the left side of the motherboard up and turn it over so the ports are now facing right.

## Step 22



- Grip the bottom edge of the motherboard closest to your body with your non-dominant hand.
- Grip the power connection wires with your dominant hand and gently pull away from your body to disconnect.



## Step 23



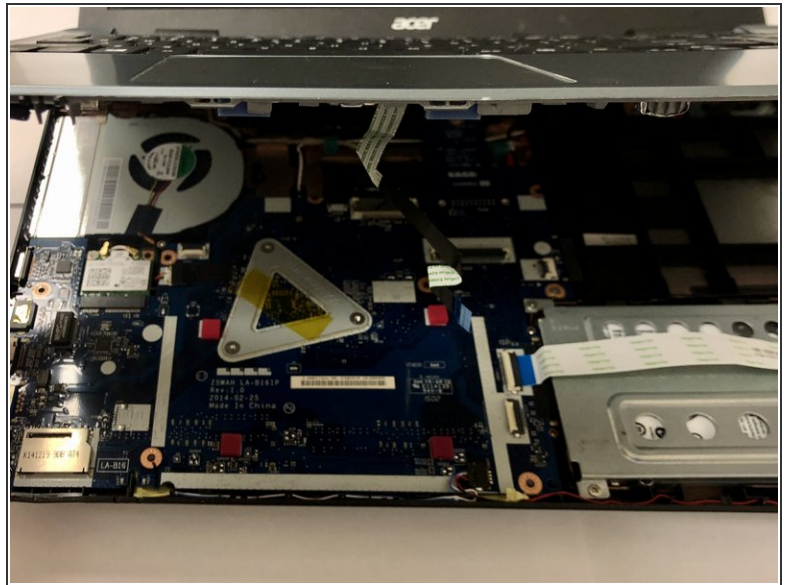
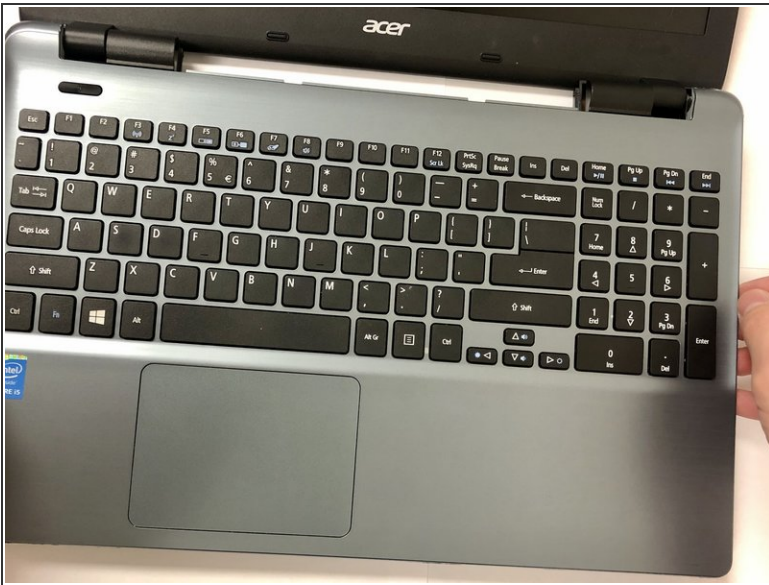
- Lift the motherboard out of the case.

## Step 24 — CPU



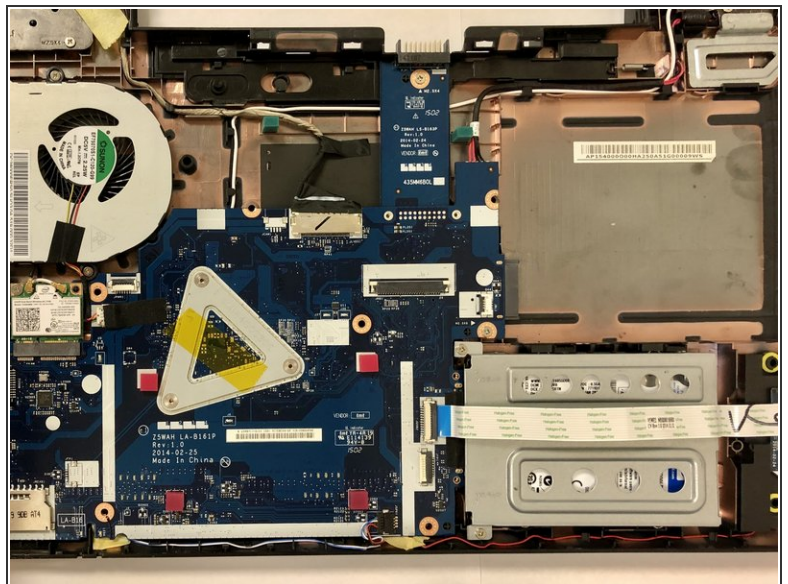
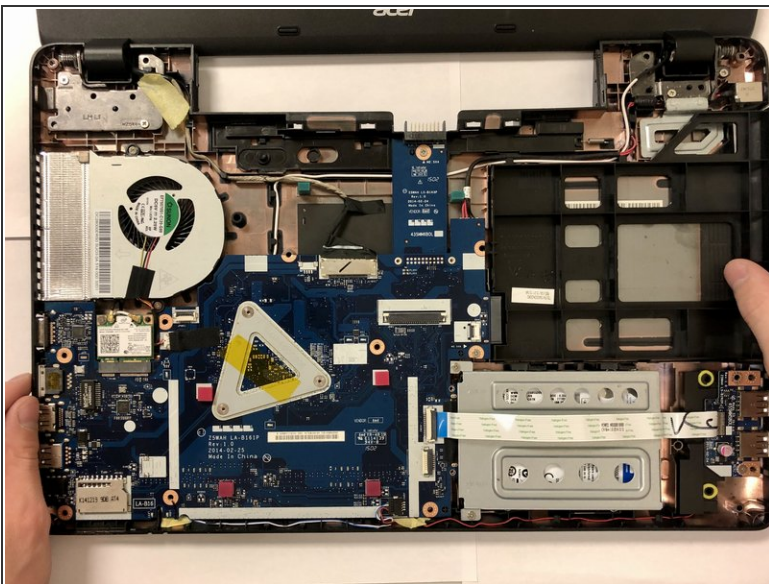
- Insert wisdom here.

## Step 25



- Insert wisdom here.

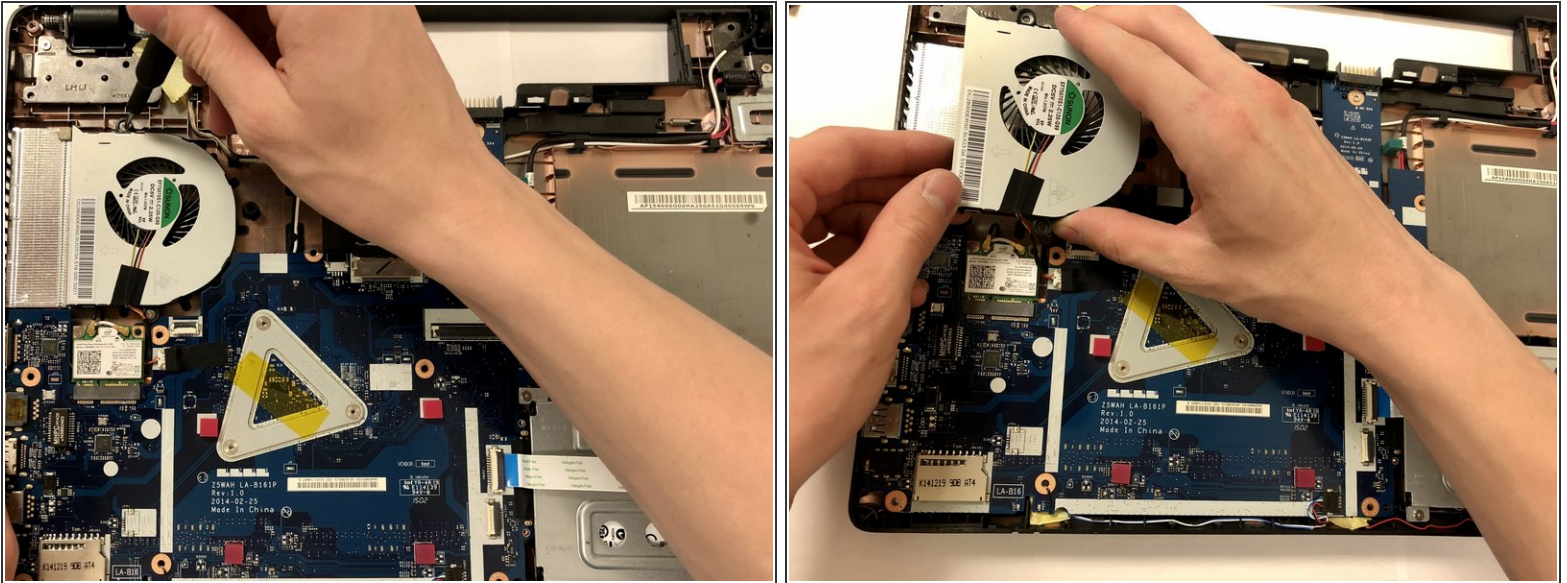
## Step 26



- Insert wisdom here.

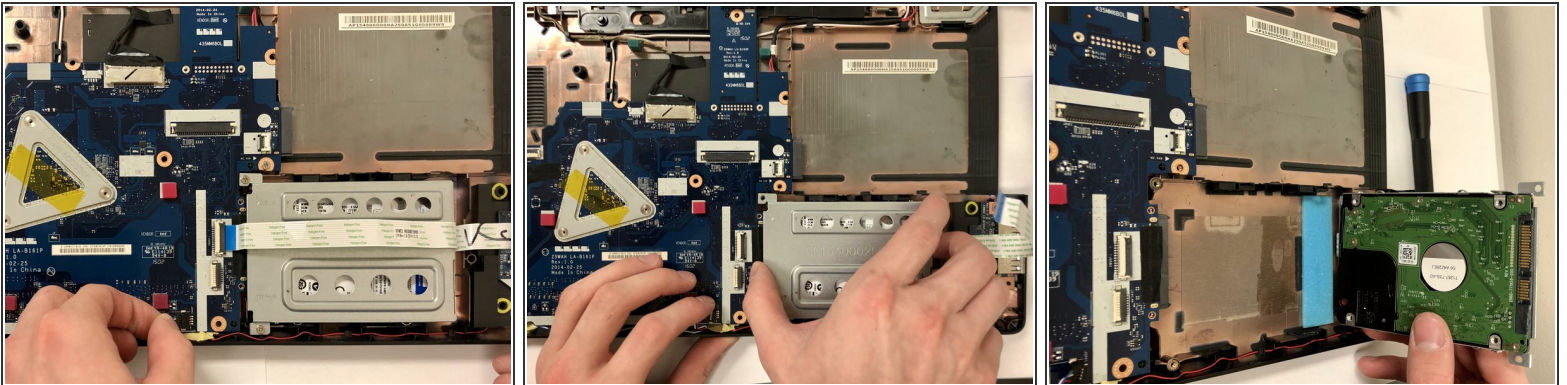


## Step 27



- Unscrew the outer 6 mm screws on both top and bottom sides of the fan. Detach the power cable by pulling it out. Remove the cooling fan.

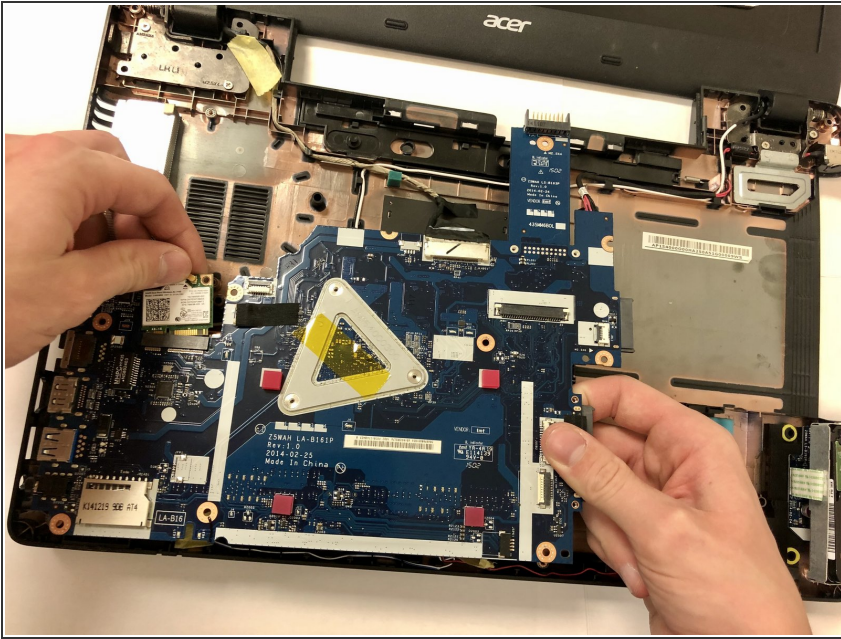
## Step 28



- Locate the hard drive. There are two 4mm Phillips head screws connecting the hard drive to the motherboard. Unscrew them. Carefully flip the ZIF ribbon out of the way, and remove the hard drive.

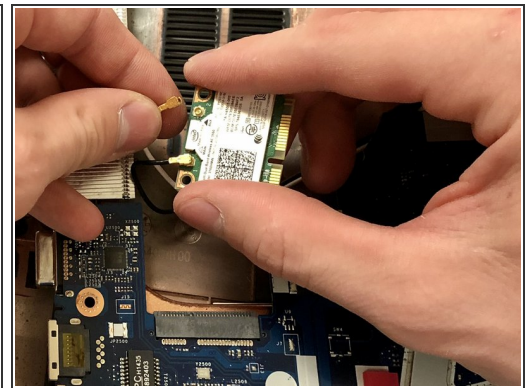
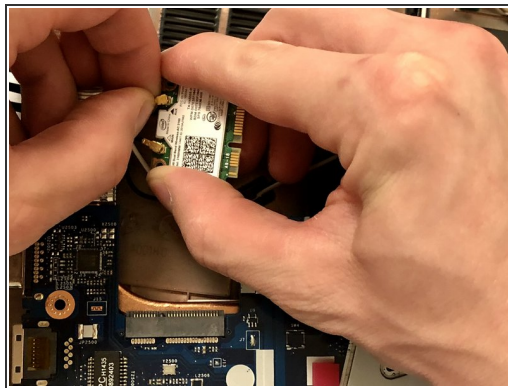
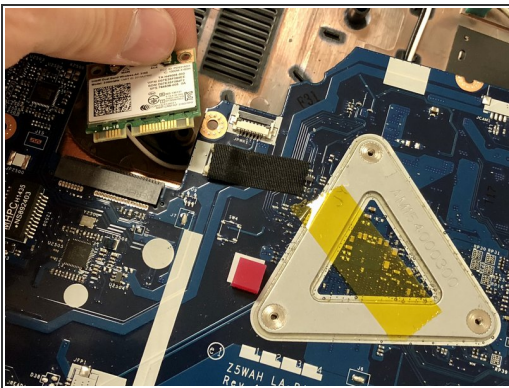


## Step 29



- Finish unscrewing any screws holding the motherboard down, and remove the motherboard.

## Step 30



- Gently unplug both wires connected to the wi-fi card to disconnect it.

To reassemble your device, follow these instructions in reverse order.