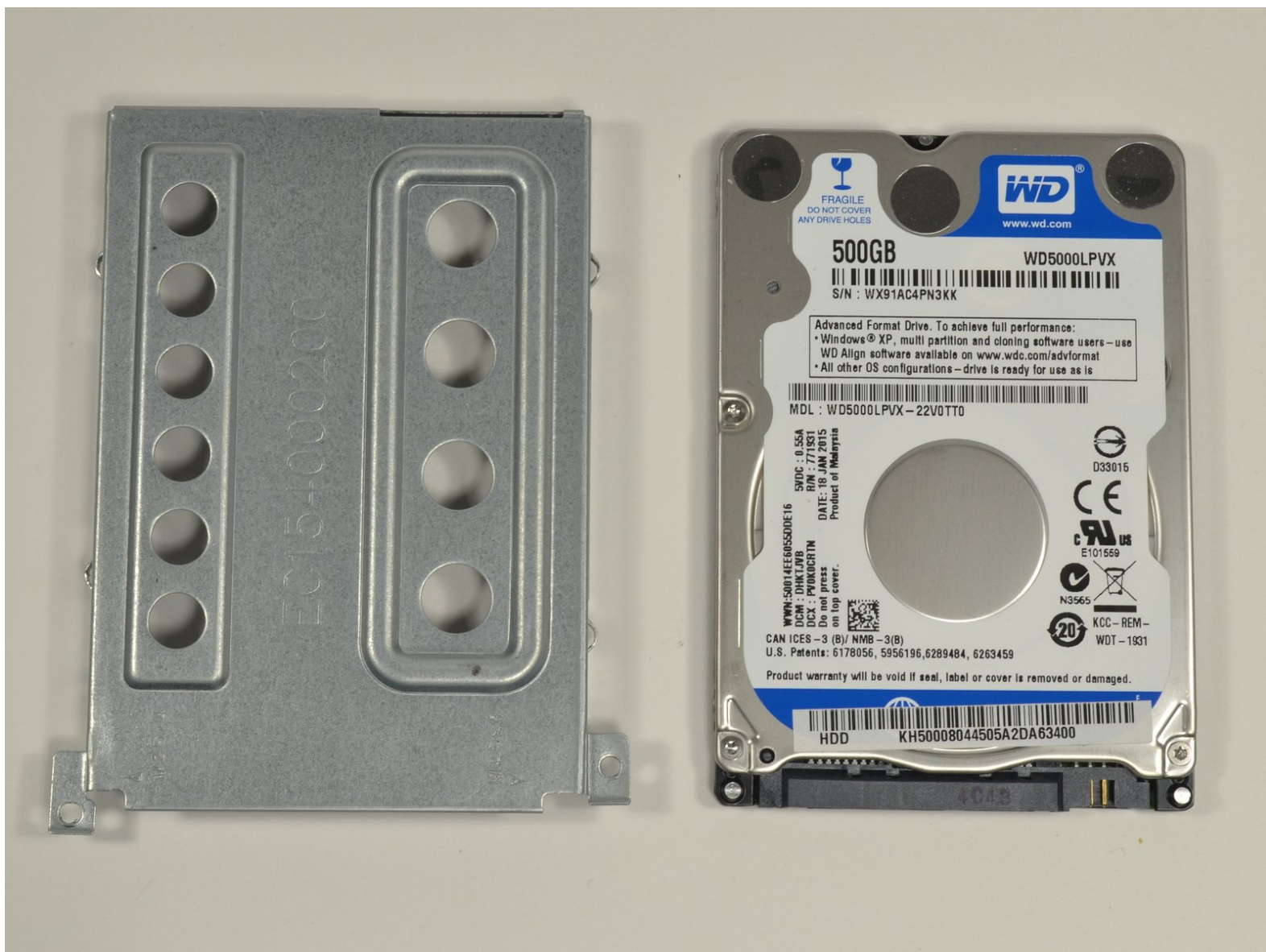




# Acer E5-571-54FL Hard drive Replacement

This guide will help you replace the hard drive. It will also be used in other repair guides.

Written By: Aaron Weissman



# INTRODUCTION

There are many reasons to replace your hard drive. You may be running out of storage space or want to upgrade to a solid state drive. Perhaps you are encountering errors with your data. This guide will get you fixed up in no time.



## TOOLS:

- [Phillips #0 Screwdriver](#) (1)
  - [iFixit Opening Tools](#) (1)
  - [Metal Spudger Set](#) (1)
-

## Step 1 — Battery



- ⚠ Ensure the laptop is powered down prior to beginning.
- Turn the laptop over with the battery closest to your body.
- The battery release is just above the left side of the battery.

## Step 2



- Insert a small tipped screwdriver or similar tool into the release.
- Gently slide the release all the way to the left.
- ⓘ You should hear a sound after the slide is all the way left. This lets you know the battery has disengaged.

This document was generated on 2019-12-26 04:24:08 PM (MST).

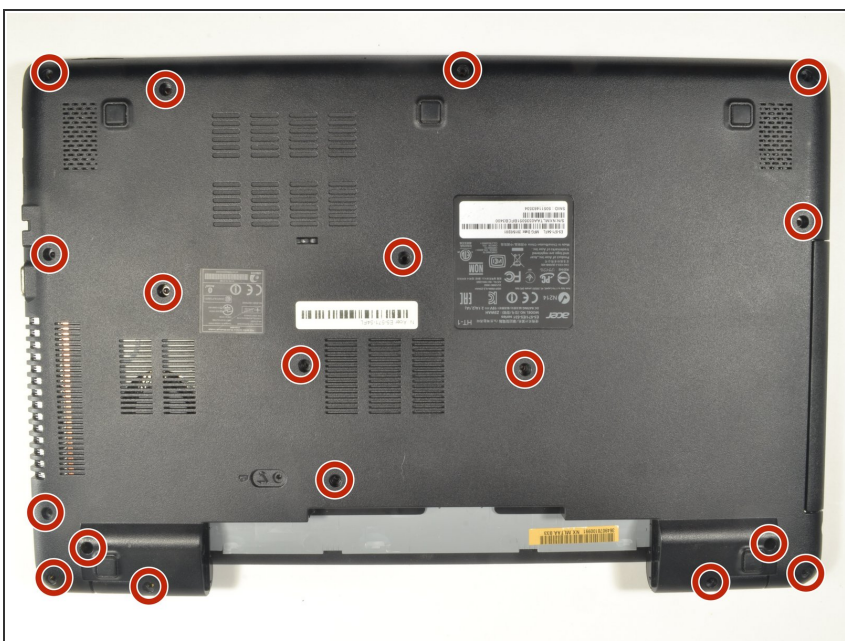


## Step 3



- With your hands on each end of the battery, carefully pull towards your body to remove.

## Step 4 — Keyboard



- Using a #0 Phillips screwdriver, remove a total of eighteen identical 8mm Phillips screws and set them aside.

## Step 5



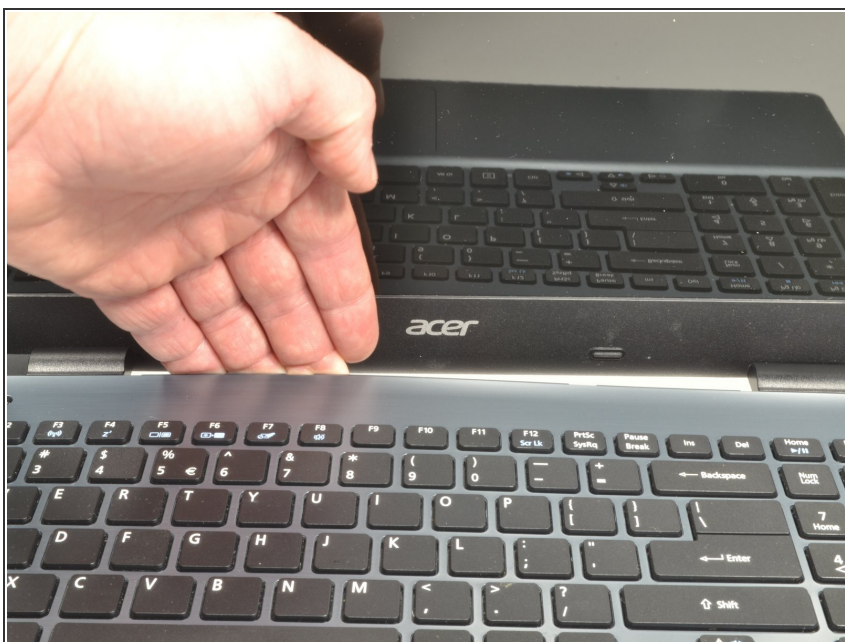
- Rotate the laptop 180 degrees so that the battery compartment is now furthest away from your body.

## Step 6



- Turn the laptop over so that you can easily open the screen to a vertical position.

## Step 7



- Put your fingers under the top of the keyboard assembly directly below the Acer logo.
- Carefully pull up on the center until you hear the tabs disengage from the bottom.

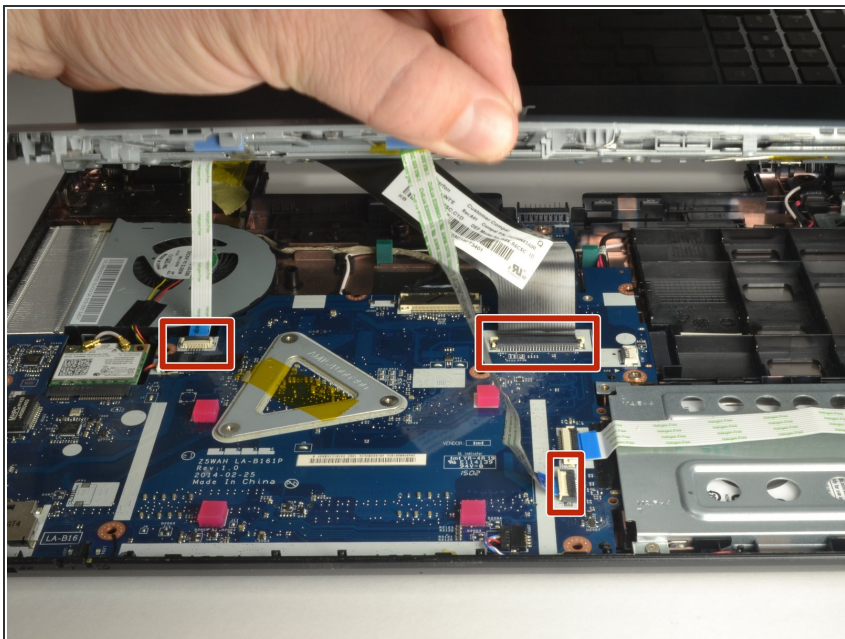
## Step 8



- Work your way around the seam with the plastic opening tool carefully prying the base and top cover apart.
- ⓘ If you have difficulty with the plastic opening tool, use a metal spudger **but be more cautious** to not damage or mar your laptop case.

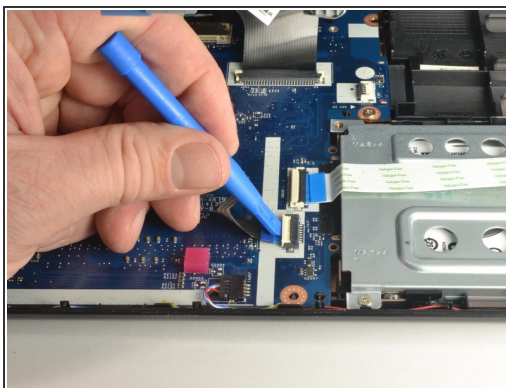


## Step 9



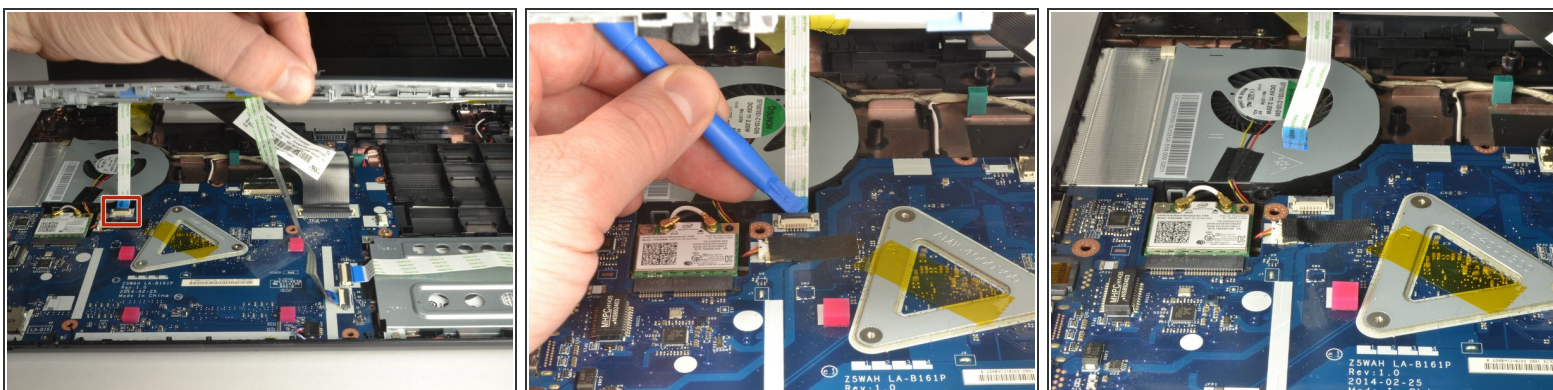
- When the two halves are separated, carefully lift up the front of the keyboard and touchpad assembly.
- You will see three ribbon cables attached to the motherboard.

## Step 10



- Closest to the ribbon cable on the zero insertion force (ZIF) connector is a **white** locking tab.
- Carefully lift up on the locking tab with the plastic opening tool to release the ribbon cable. (Picture 2)
- Remove the ribbon cable from the connector.

## Step 11



- Closest to the ribbon cable on the ZIF connector is a **black** locking tab.
- Carefully lift up on the locking tab with the plastic opening tool to release the ribbon cable. (Picture 2)
- Remove the ribbon cable from the connector.

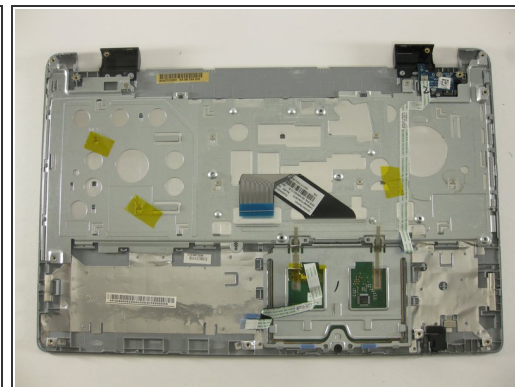
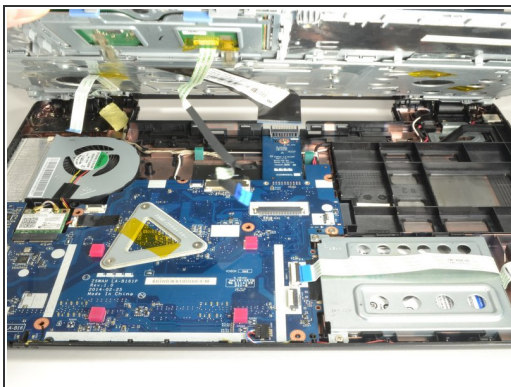
## Step 12



- On each side of the large connector there are two white tabs.
- Carefully push away from you with the plastic opening tool on each white tab to release the cable. (Picture 2)
- Remove the ribbon cable from the connector.

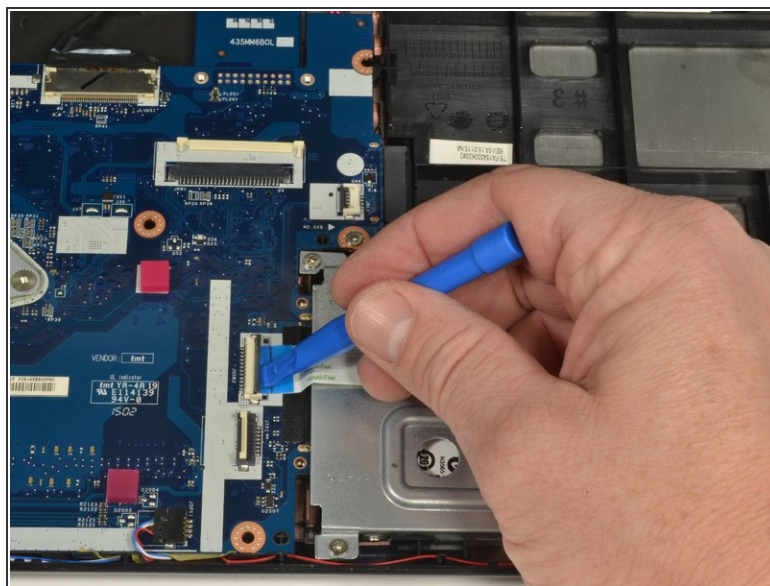


## Step 13



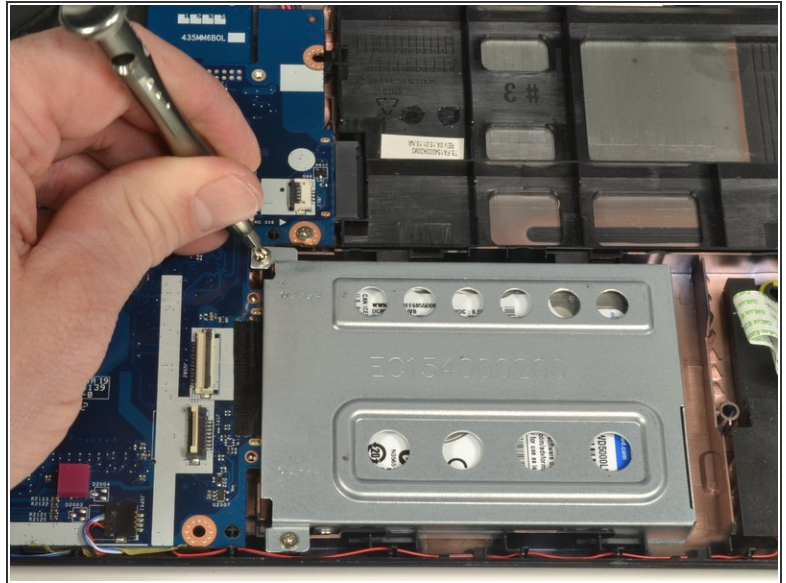
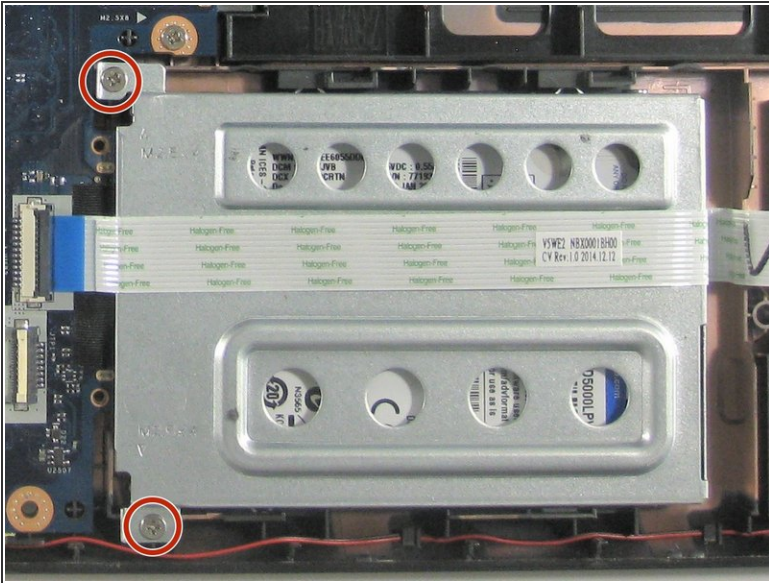
- Once all three ribbon cables are disconnected, lift off the top cover with the keyboard and touchpad.

## Step 14 — Hard drive



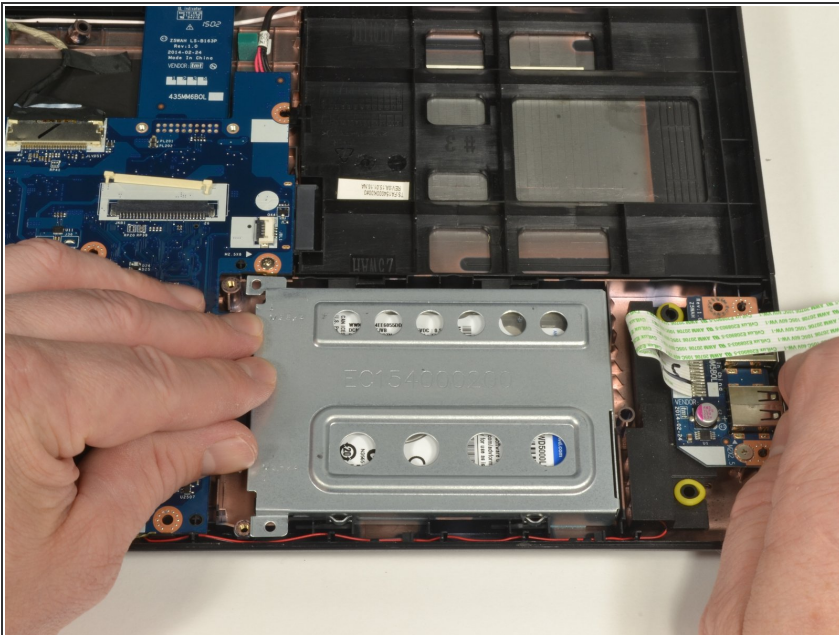
- The hard drive and carriage are at the lower right of the laptop.
- Using the plastic opening tool, carefully lift up on the **black** locking tab of the ZIF connector to release the USB port ribbon cable.
- Move the USB port ribbon cable out of the way

## Step 15



- Using a #0 Phillips screwdriver, remove the two 4mm screws securing the hard drive carriage in place.

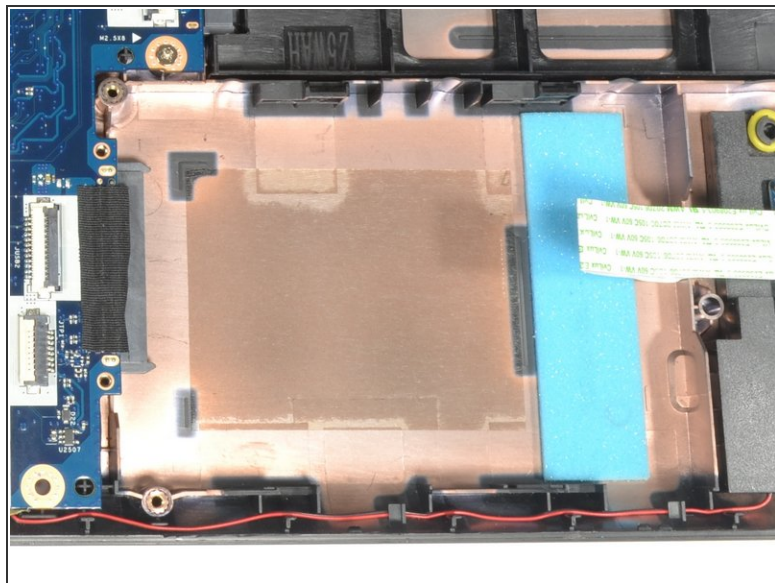
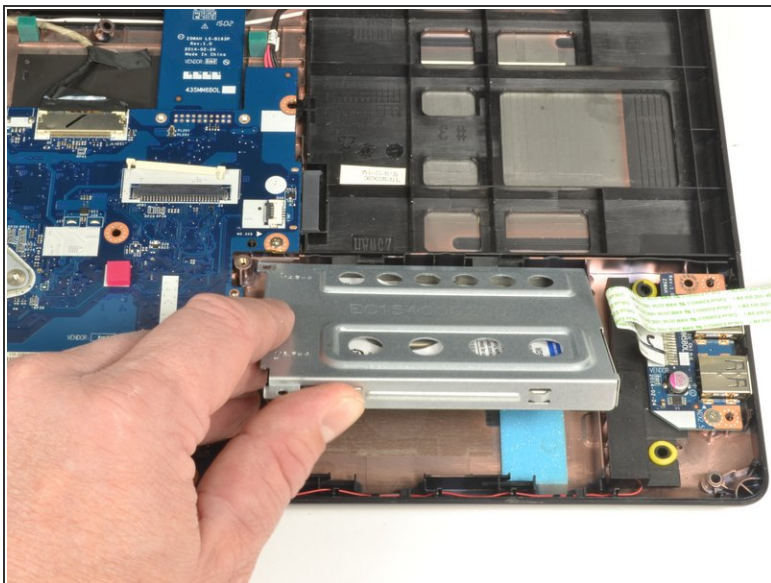
## Step 16



- Hold the right side of the laptop in place with your right hand.
- Put the fingers of your left hand along the top edge of the hard drive carriage.
- Push the hard drive carriage towards your right hand to disconnect it from the motherboard.
- ⓘ This procedure may require more force than other procedures.



## Step 17



- Lift up on the edge of the hard drive carriage closest to your body to remove the carriage.
- ⓘ If doing the motherboard replacement guide, skip the next step.



## Step 18



- There are two 3mm Phillips screws holding the hard drive into the carriage. One on either side of the carriage.
- Hold the hard drive carriage with your non-dominant hand along one side. Ensure one of the Phillips screws is visible.
- Using a #0 Phillips screwdriver, remove the 3mm screw to release the side of the hard drive from the carriage.
- Repeat the two previous procedures to remove the second 3mm Phillips screw freeing the hard drive from the carriage.

To reassemble your device, follow these instructions in reverse order.