



Acer E5-571-54FL WiFi Card Replacement

This guide will lead you through the replacement of the WiFi card. It will also be used in other repair guides.

Written By: Aaron Weissman



INTRODUCTION

Having connection issues with your WiFi? Is it dropping or the signal is very weak? Your WiFi card may be faulty or past it's prime. This guide will take you through the replacement of the WiFi card.



TOOLS:

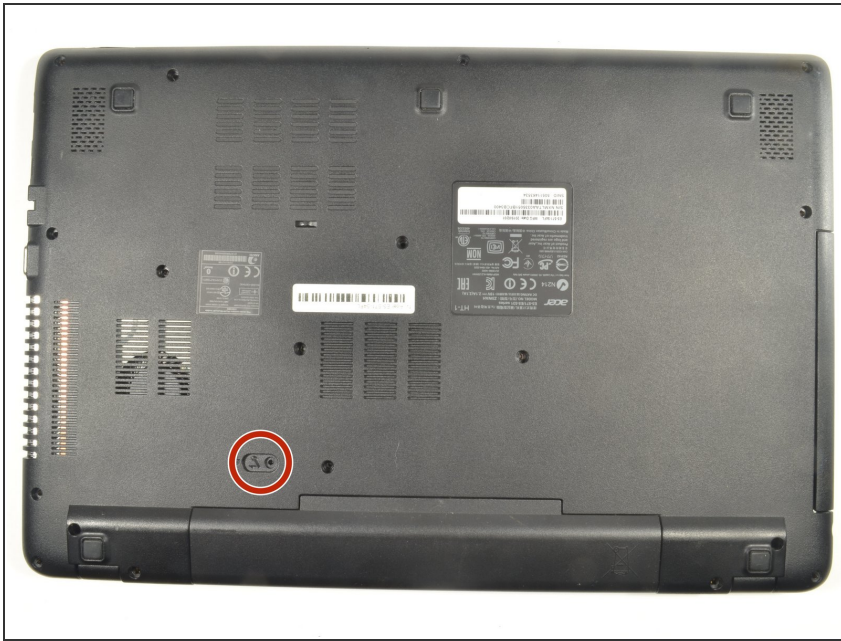
- [Phillips #0 Screwdriver](#) (1)
- [iFixit Opening Tools](#) (1)
- [Metal Spudger Set](#) (1)
- [ESD Safe Tweezers Blunt Nose](#) (1)



PARTS:

- [Intel Dual Band Wireless-AC3160](#) (1)
Mini-PCIE
Model 3160HMW

Step 1 — Battery



- ⚠ Ensure the laptop is powered down prior to beginning.
- Turn the laptop over with the battery closest to your body.
- The battery release is just above the left side of the battery.

Step 2



- Insert a small tipped screwdriver or similar tool into the release.
- Gently slide the release all the way to the left.
- ⓘ You should hear a sound after the slide is all the way left. This lets you know the battery has disengaged.

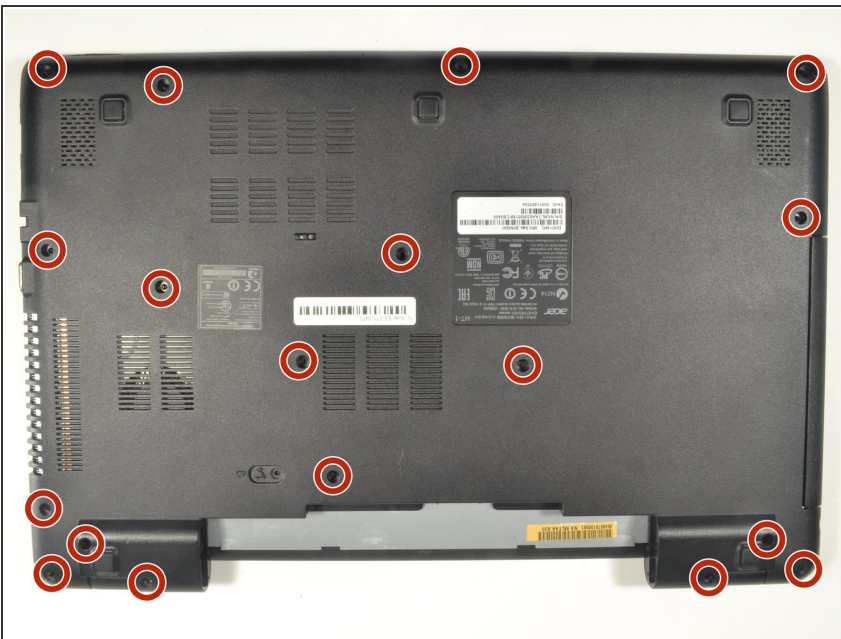
This document was generated on 2020-01-03 03:47:55 PM (MST).

Step 3



- With your hands on each end of the battery, carefully pull towards your body to remove.

Step 4 — Keyboard



- Using a #0 Phillips screwdriver, remove a total of eighteen identical 8mm Phillips screws and set them aside.

Step 5



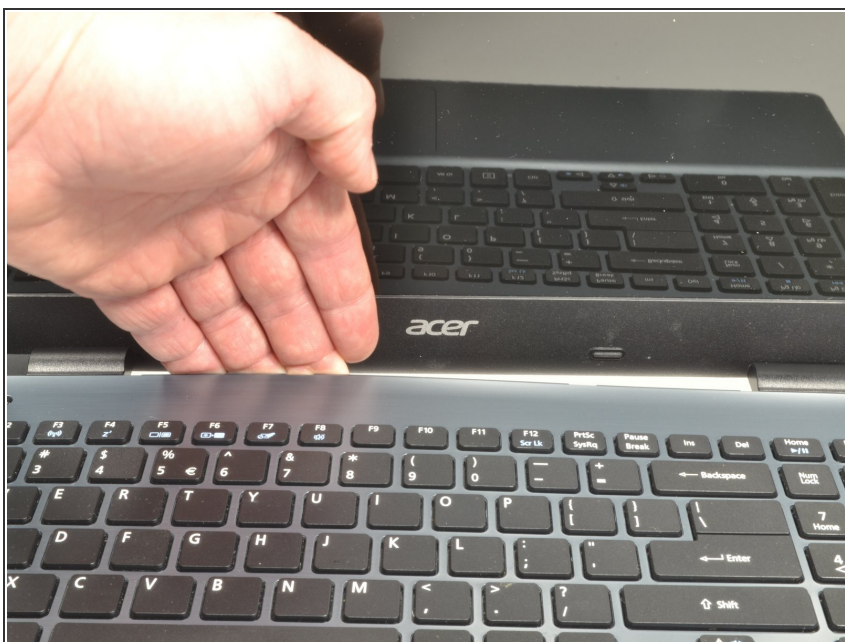
- Rotate the laptop 180 degrees so that the battery compartment is now furthest away from your body.

Step 6



- Turn the laptop over so that you can easily open the screen to a vertical position.

Step 7



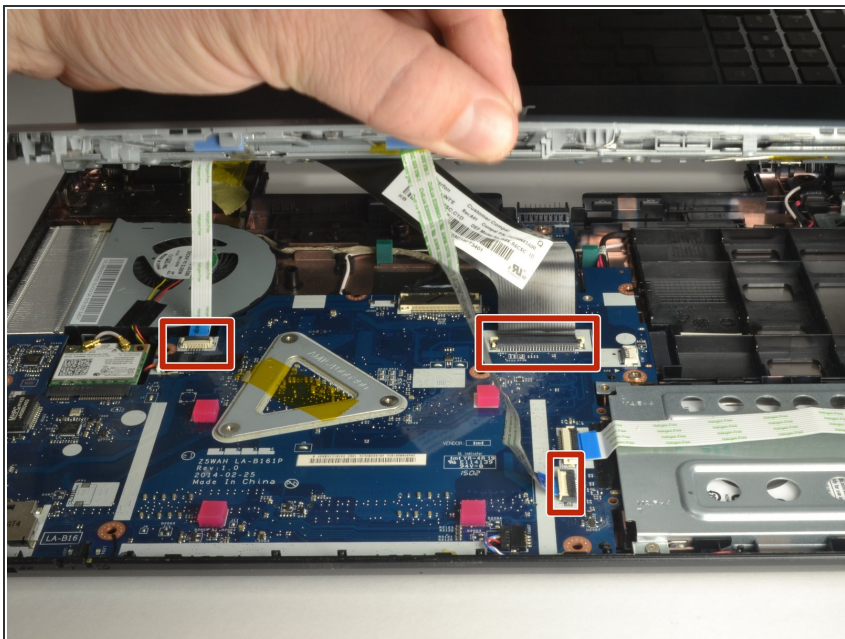
- Put your fingers under the top of the keyboard assembly directly below the Acer logo.
- Carefully pull up on the center until you hear the tabs disengage from the bottom.

Step 8



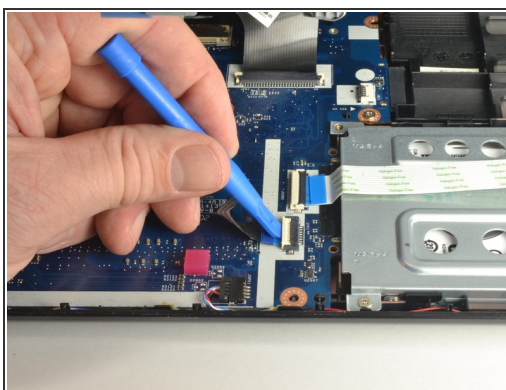
- Work your way around the seam with the plastic opening tool carefully prying the base and top cover apart.
- ⓘ If you have difficulty with the plastic opening tool, use a metal spudger **but be more cautious** to not damage or mar your laptop case.

Step 9



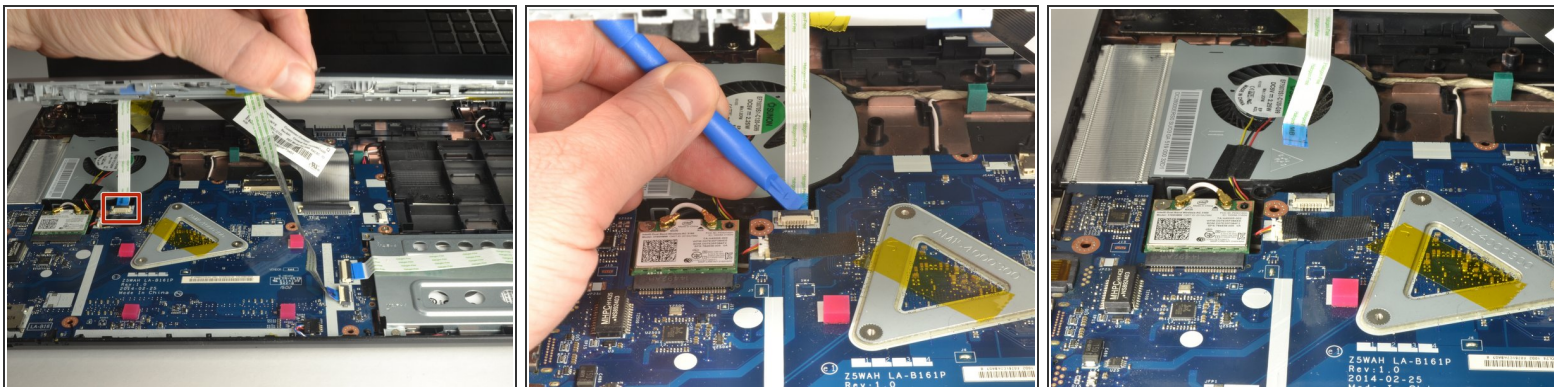
- When the two halves are separated, carefully lift up the front of the keyboard and touchpad assembly.
- You will see three ribbon cables attached to the motherboard.

Step 10



- Closest to the ribbon cable on the zero insertion force (ZIF) connector is a **white** locking tab.
- Carefully lift up on the locking tab with the plastic opening tool to release the ribbon cable. (Picture 2)
- Remove the ribbon cable from the connector.

Step 11



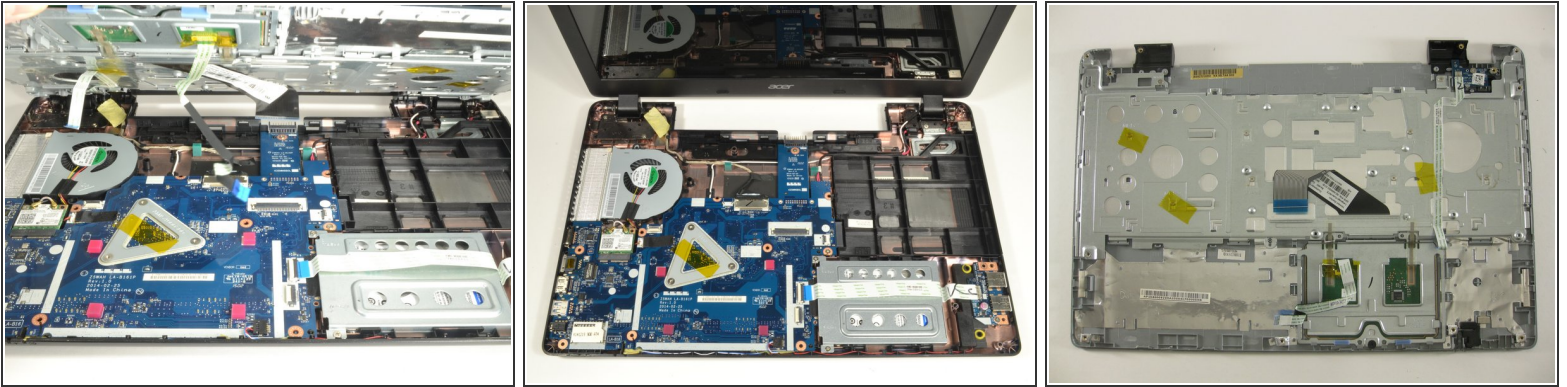
- Closest to the ribbon cable on the ZIF connector is a **black** locking tab.
- Carefully lift up on the locking tab with the plastic opening tool to release the ribbon cable. (Picture 2)
- Remove the ribbon cable from the connector.

Step 12



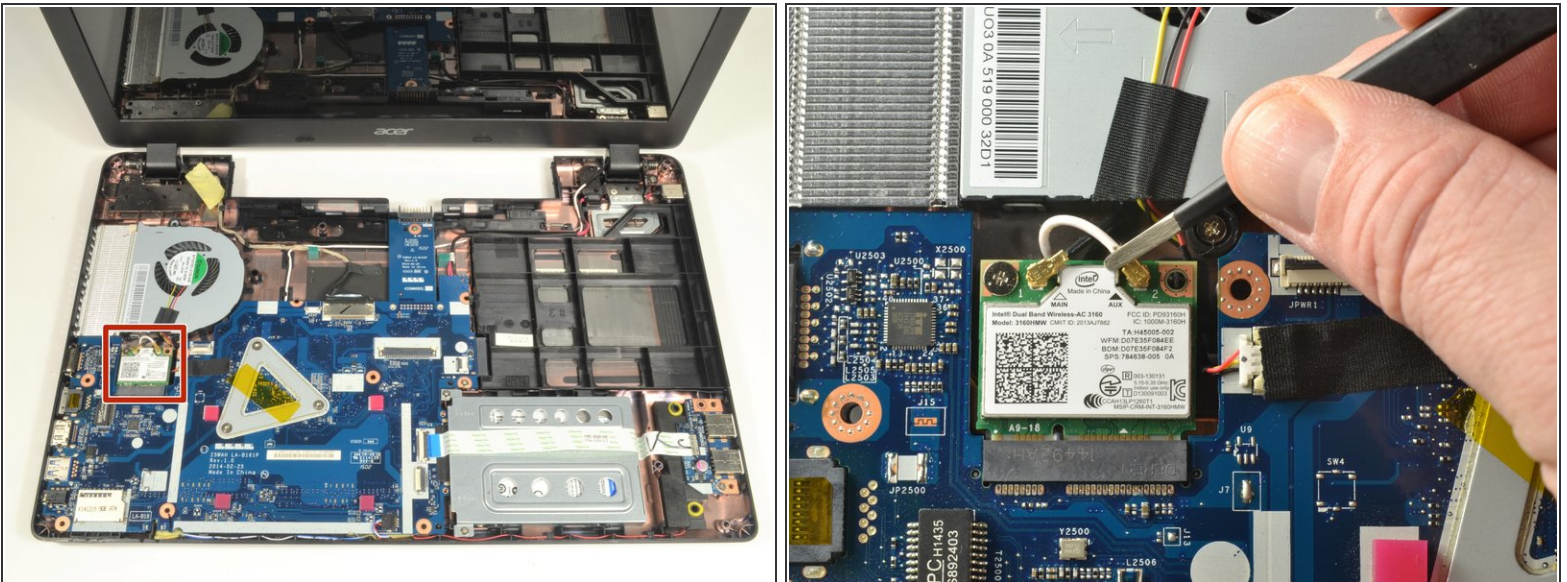
- On each side of the large connector there are two white tabs.
- Carefully push away from you with the plastic opening tool on each white tab to release the cable. (Picture 2)
- Remove the ribbon cable from the connector.

Step 13



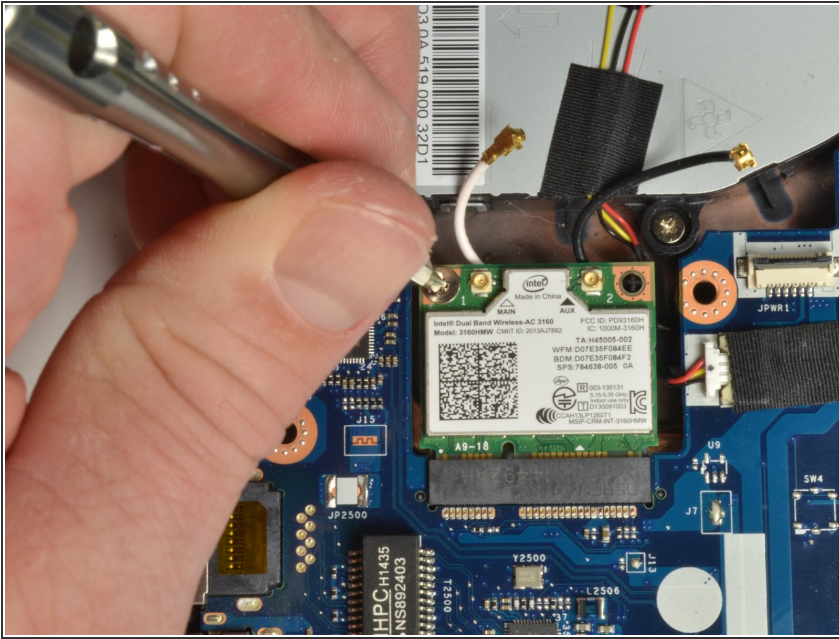
- Once all three ribbon cables are disconnected, lift off the top cover with the keyboard and touchpad.

Step 14 — WiFi Card



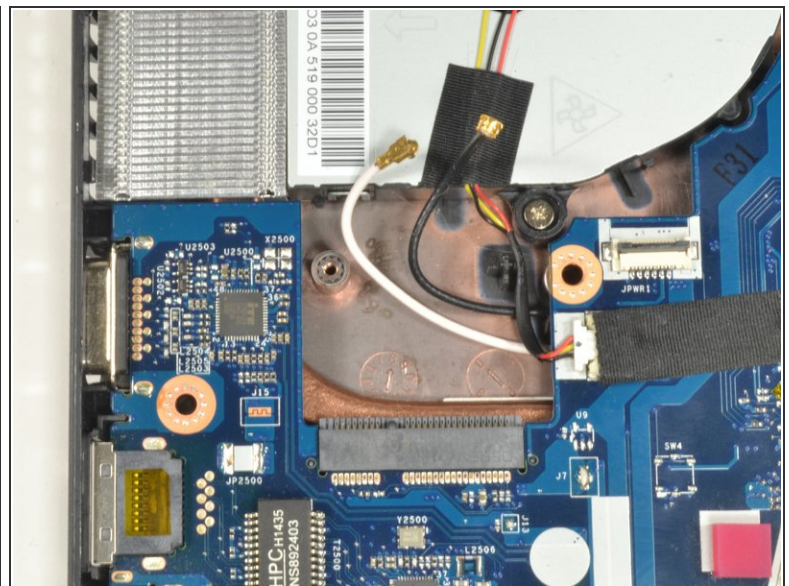
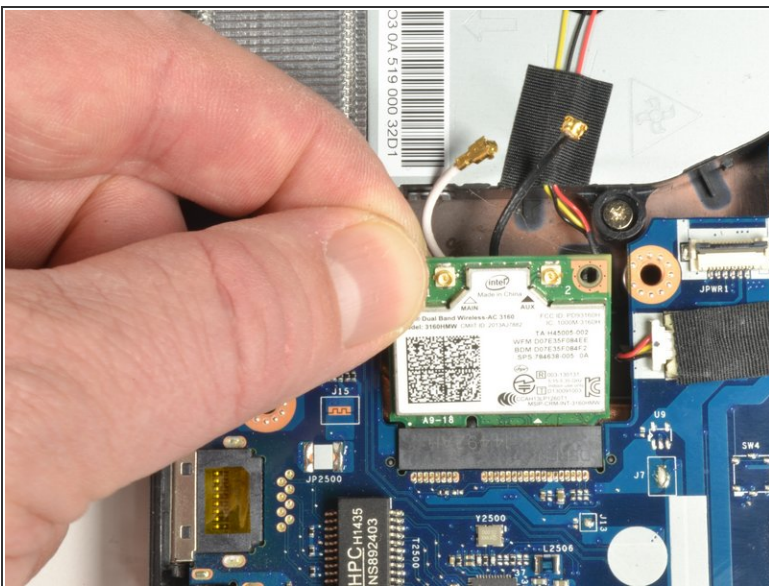
- The WiFi card is just below the fan with a white coaxial cable and a black coaxial cable attached.
- Using ESD safe blunt nose metal tweezers, grab just behind the brass connection on the white coaxial cable attached to the WiFi card.
- Carefully lift up and forward to disconnect the wire.
- Repeat both procedure one and two to remove the black coaxial cable.

Step 15



- Using a #0 Phillips screwdriver, remove the 3mm screw from the upper left corner of the WiFi card.
- ⓘ The edge of WiFi card will lift up as the screw is removed.

Step 16



- Grab the upper left corner of the WiFi card with your fingers.
- Gently pull the WiFi card away from the socket.

To reassemble your device, follow these instructions in reverse order.