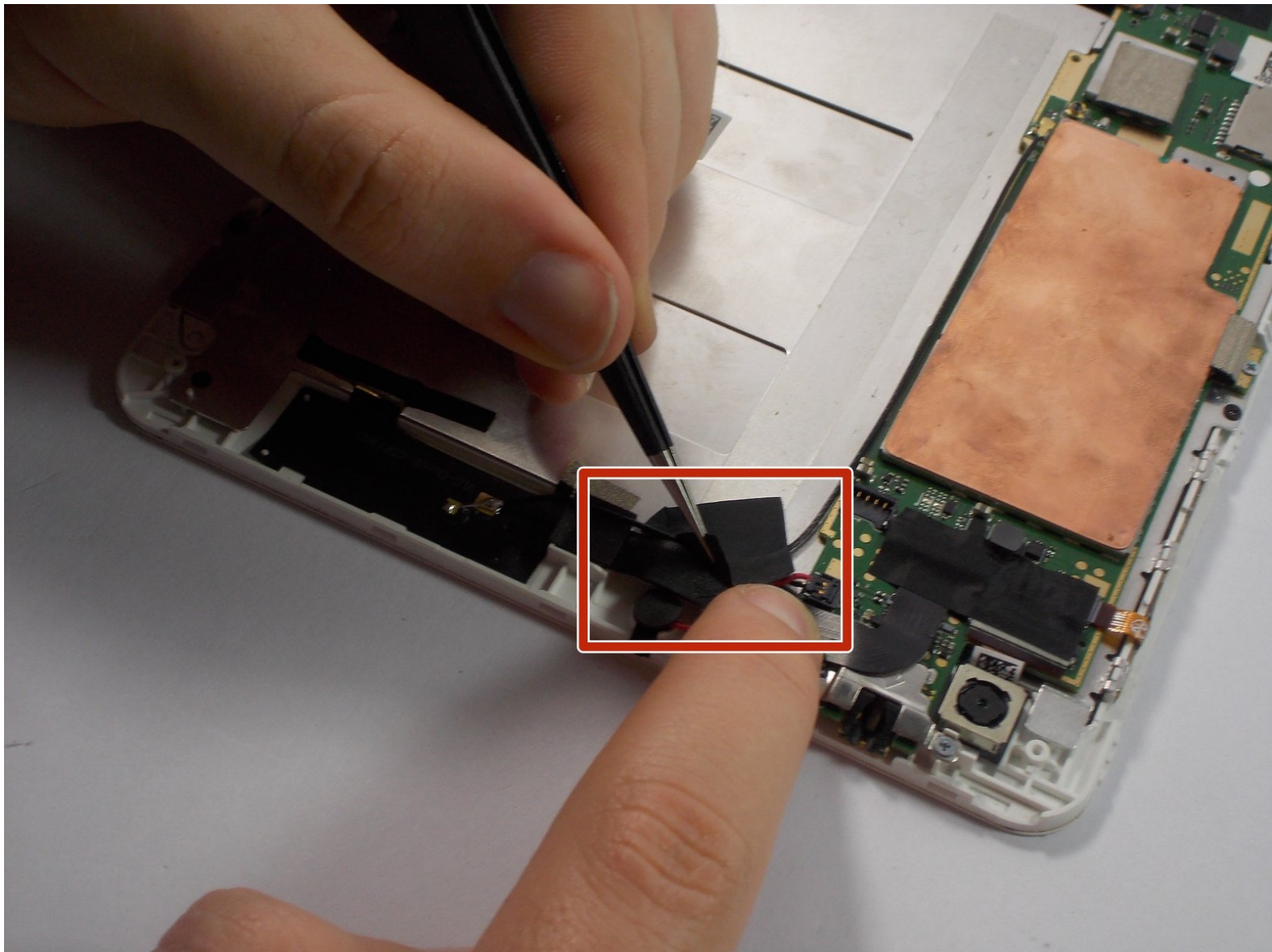




Acer Iconia A1-830 Front Facing Camera Replacement

This guide shows how to replace the front facing camera. This is the camera that is in the top-center of the device

Written By: Brendan Coveney



INTRODUCTION

This guide will show you how to replace a camera in your tablet. This tiny digital camera is connected via a ribbon cable, which is hiding underneath some tape. You will need steady hands when you use the metal tweezers.



TOOLS:

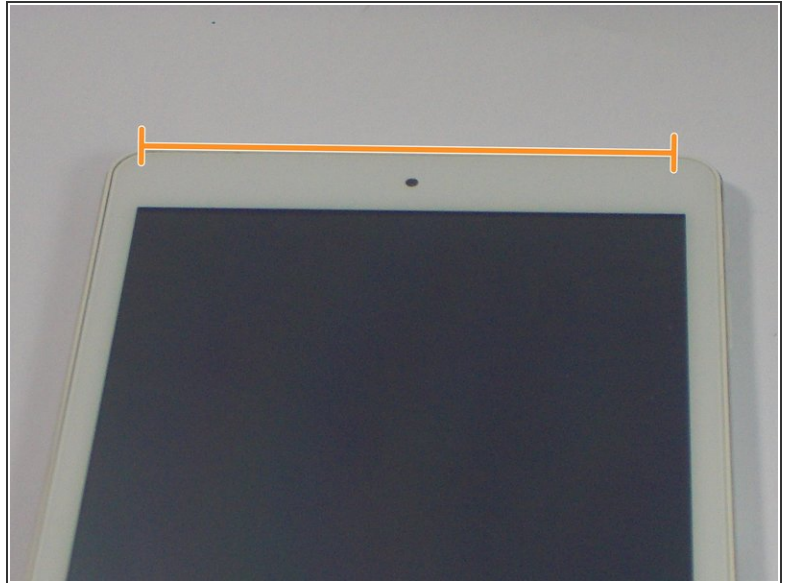
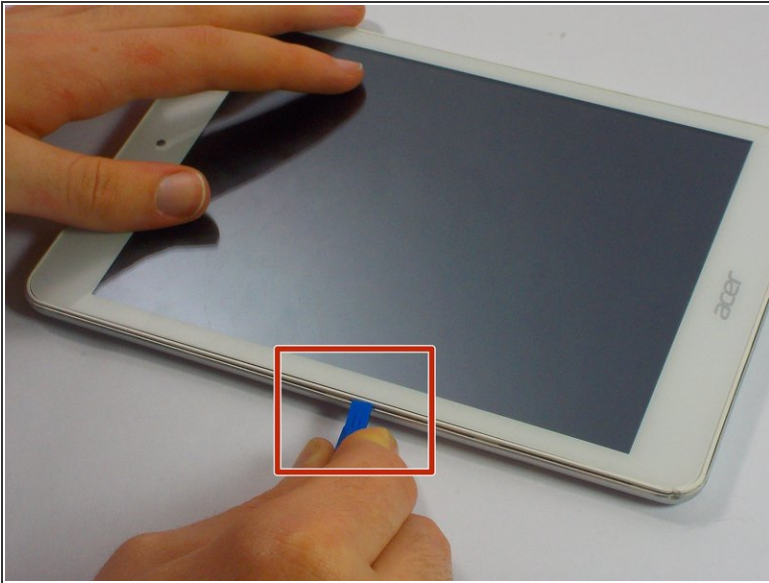
- [iFixit Opening Tools](#) (1)
 - [Spudger](#) (1)
 - [Tweezers](#) (1)
-

Step 1 — Disassembling Acer Iconia A1-830 Back Panel



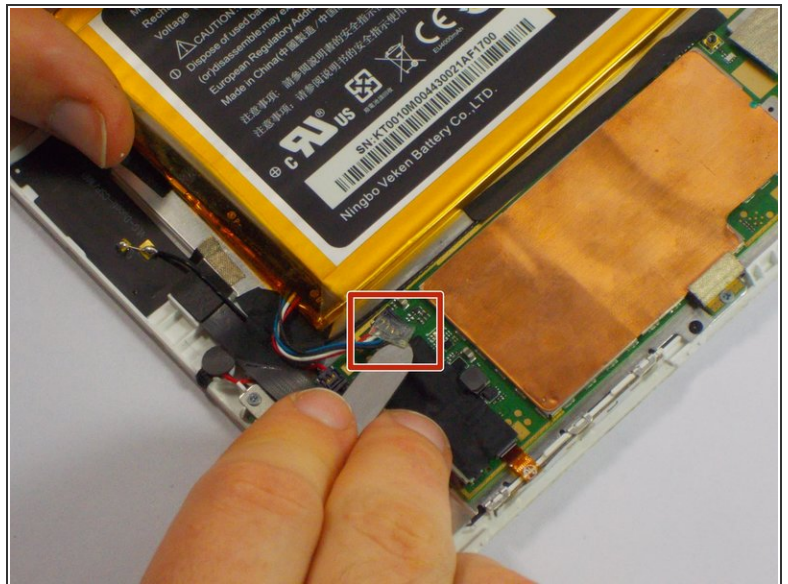
- Prepare your working space. The ideal work space has a flat, level surface that is clean and well lit.
- Shut down your Acer Iconia A1-830.
- Remove any cables or exterior covers from your tablet.
- Place it on your work space, with the screen facing up.

Step 2



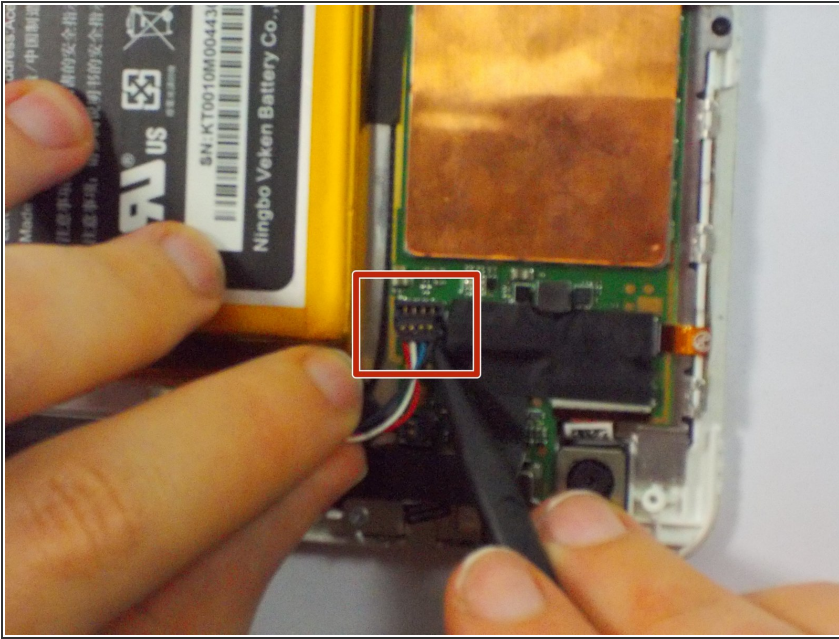
- Wedge the plastic opening tool into the tiny gap between the white plastic front bezel and the aluminum rear panel.
- Do not try to pry apart the top edge on the front side near the front-facing camera.

Step 3 — Battery



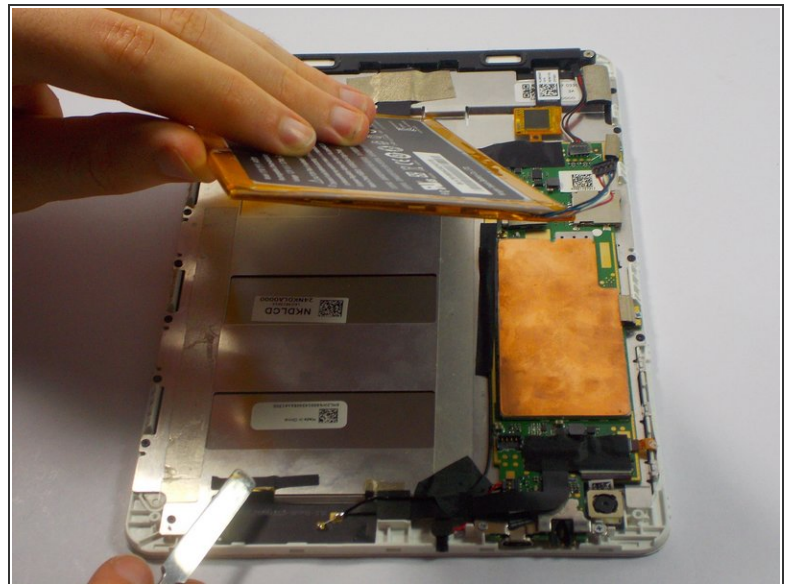
- Remove the small clear plastic cover on top of the battery cable with the nylon or metal spudger.

Step 4



- Remove the battery cable by lifting it up with the pointy end of the black nylon spudger.

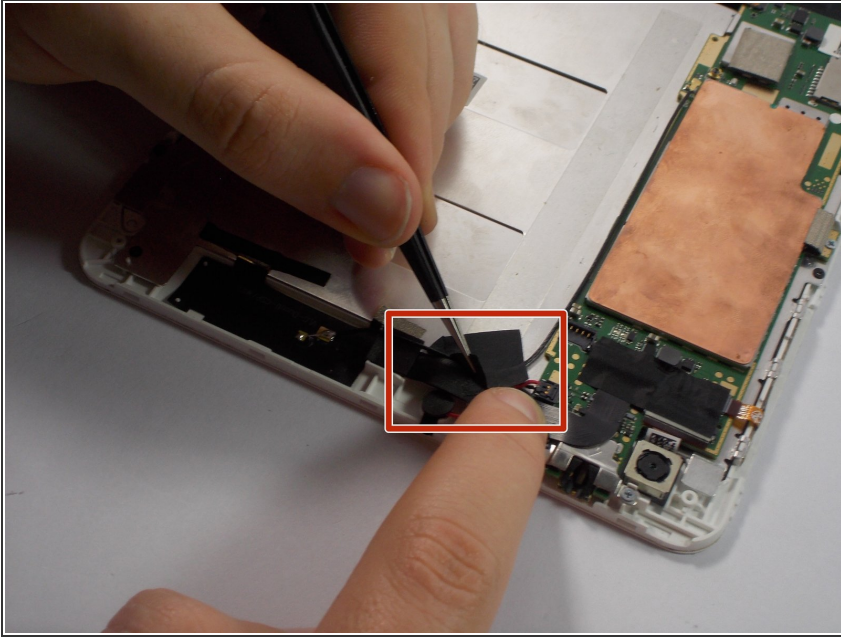
Step 5



- Un-stick the battery from the metal plate using the black nylon spudger.

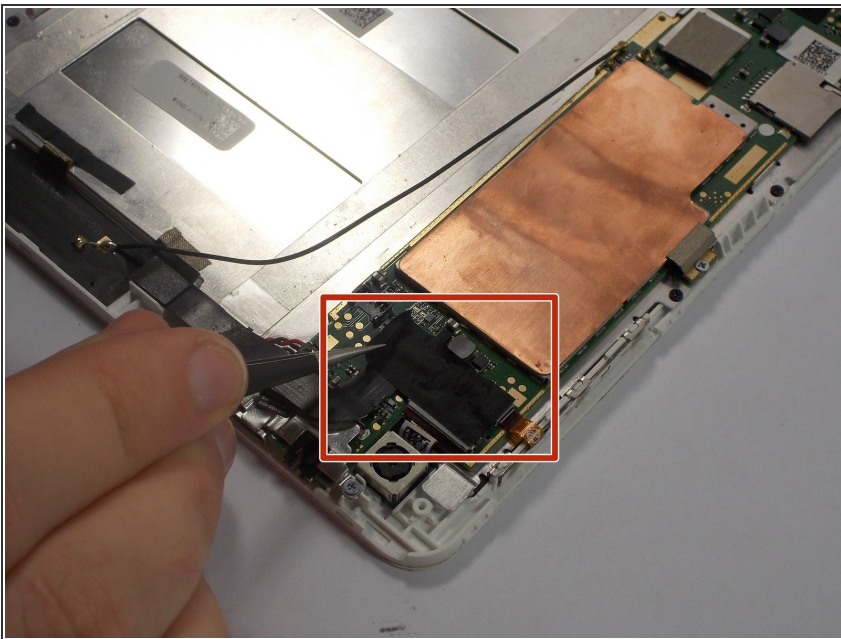
⚠ Be careful not to puncture the battery while removing it.

Step 6 — Front Facing Camera



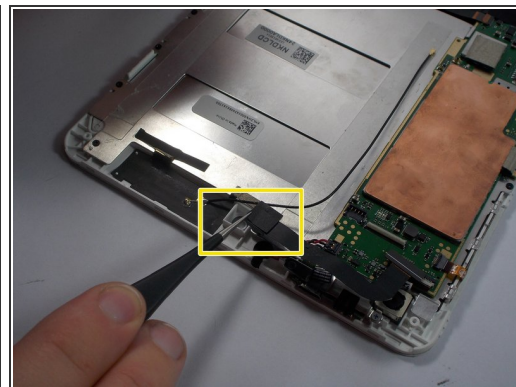
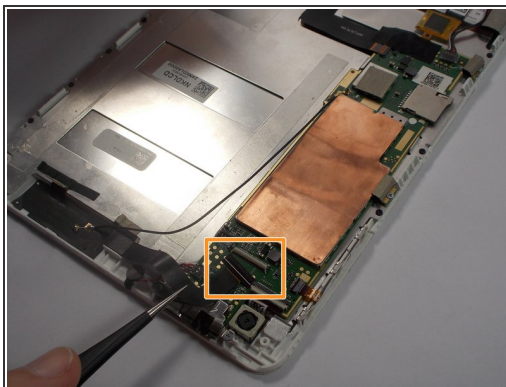
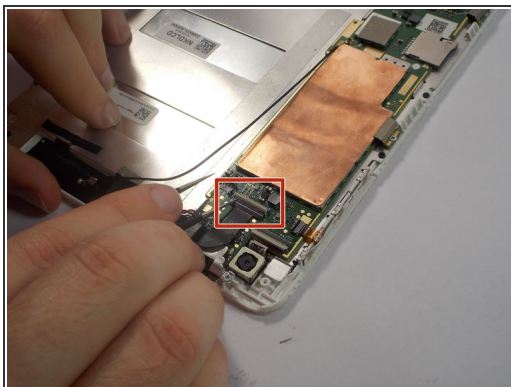
- Peel off the piece of black tape covering the front facing camera ribbon cable.
- Do this by holding down the ribbon cable and peeling off the tape with the metal tweezers.

Step 7



- Peel off the piece of black tape covering the front facing camera ribbon cable connector.

Step 8



- Lift up the small white lever to release the ribbon cable.
- Pull out the ribbon cable from the connector with the metal tweezers.
- Lift out the front facing camera from the plastic frame.

To reassemble your device, follow these instructions in reverse order.