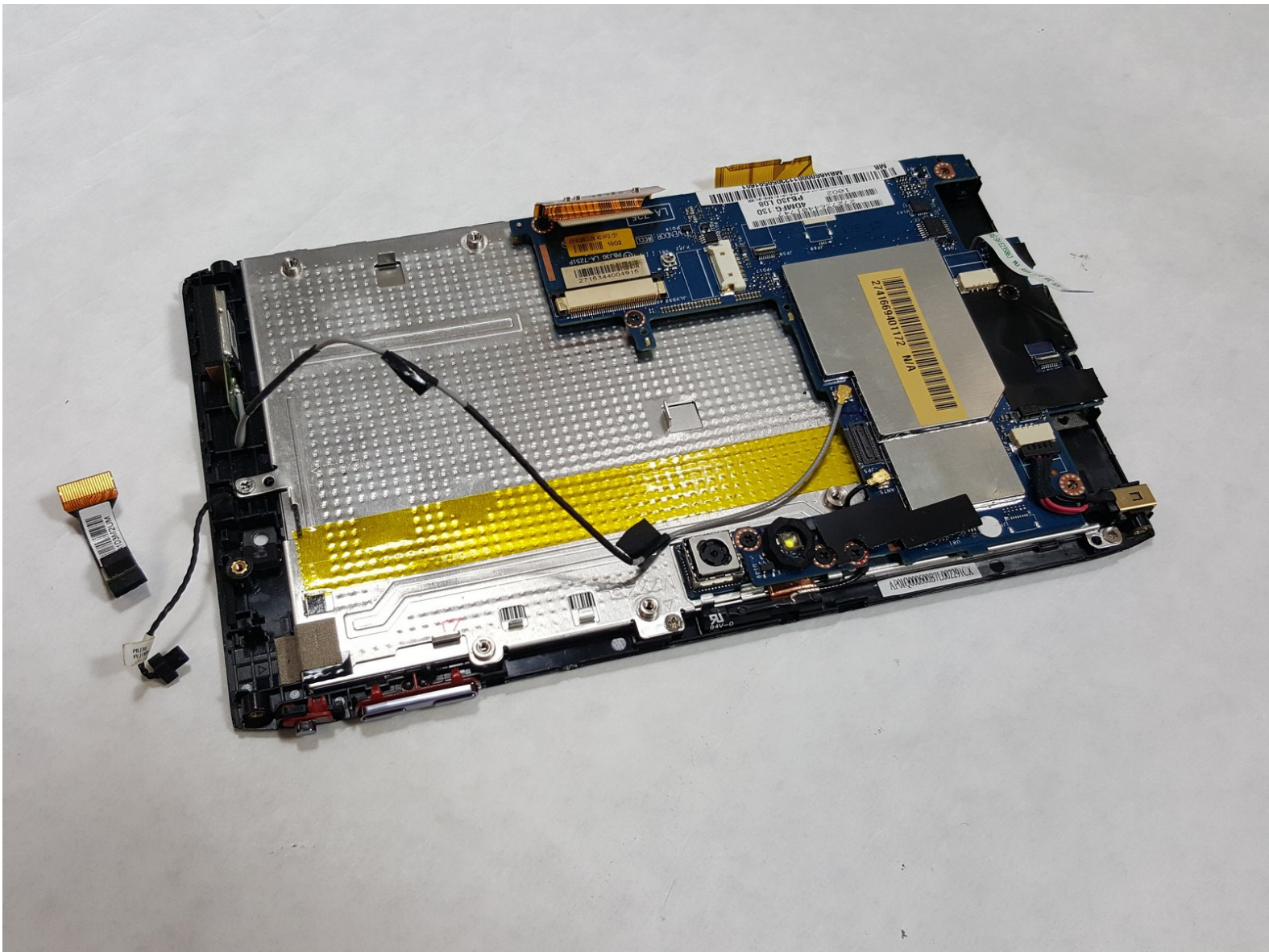




# Acer Iconia A100 Light Sensor Replacement

Step-by-step instructions to replace or remove the Light Sensor Module in your Acer Iconia Tab A100.

Written By: Bree Abernathy



## INTRODUCTION

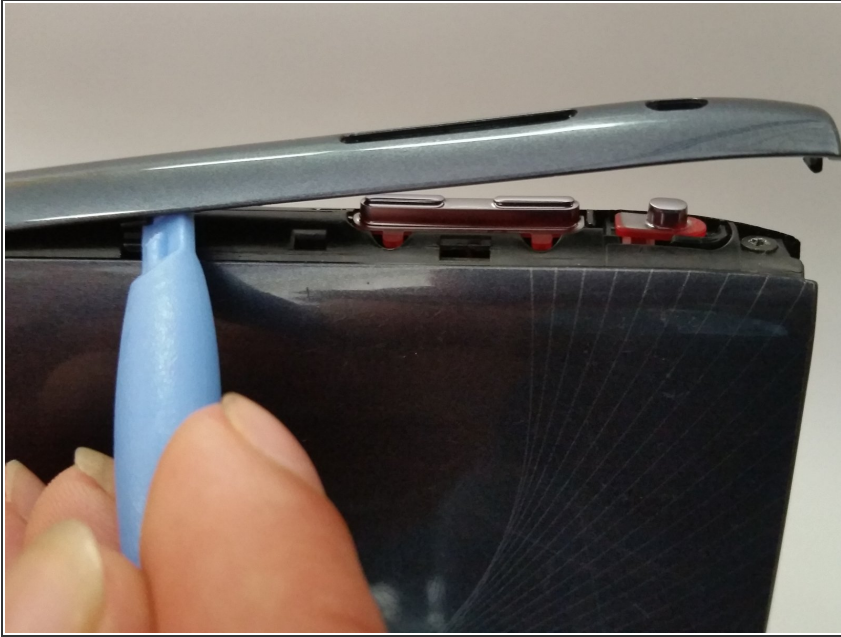
Use this step-by-step guide to replace the Light Sensor Module on your Acer Iconia Tab A100.

---

### TOOLS:

- [iFixit Opening Tools](#) (1)
  - [Phillips #00 Screwdriver](#) (1)
  - [Metal Spudger](#) (1)
-

## Step 1 — Battery



- Start at any side of the tablet.
- Begin to take apart the tablet ,with a plastic opening tool, along the sides of the tablet.
- Work your way around the tablet.
- ⓘ There are four side pieces in total.

## Step 2



- Placed on each end of the tablet are 4mm Phillips screws.
- Unscrew the 4mm Phillips screws with a Phillips #00 Screwdriver.
- ★ There are five 4.0mm screws in total (including the 4mm Phillips screw at the bottom of the tablet).

## Step 3



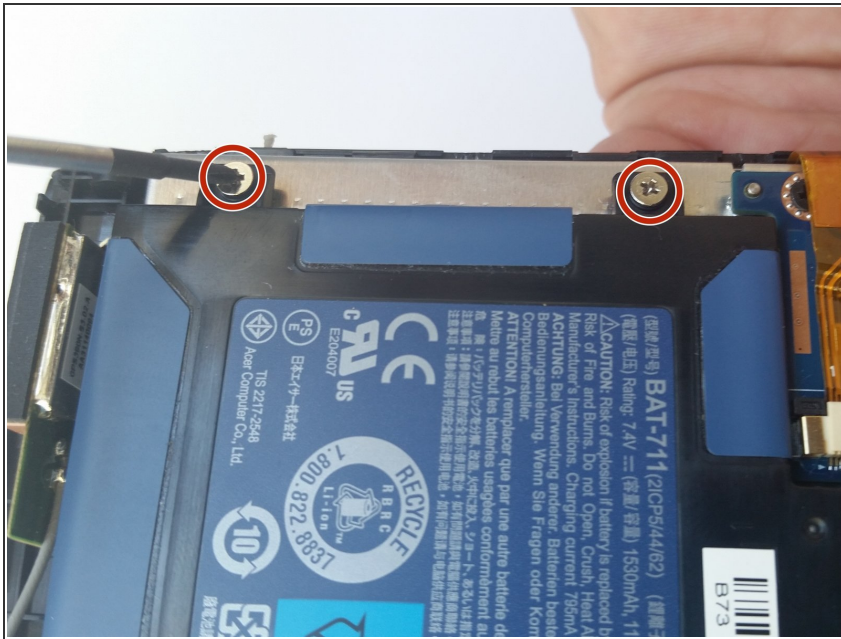
- Carefully separate the back piece from the device using a plastic opening tool.
- ☑ Remember to open along the entire perimeter of the tablet.

## Step 4



- Turn the tablet over to locate the battery.
- ⓘ Locate the large blue and black object at the bottom of the tablet with the plus and minus sign.

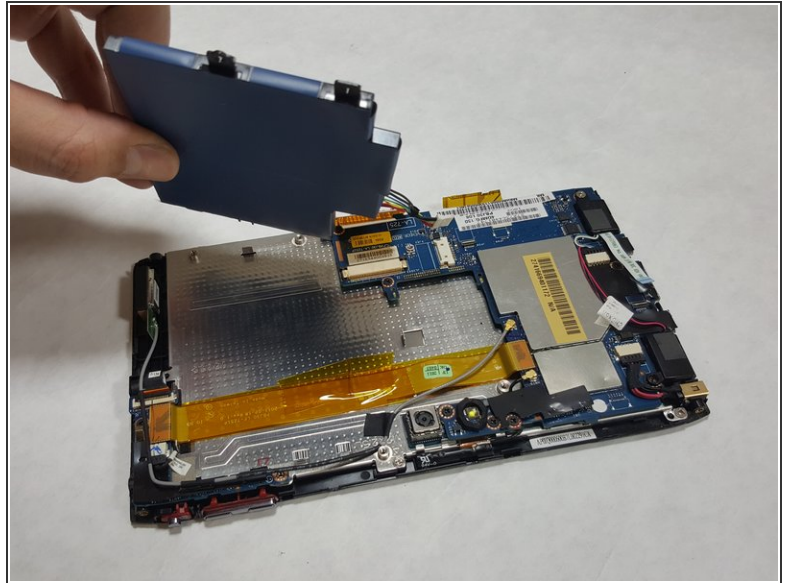
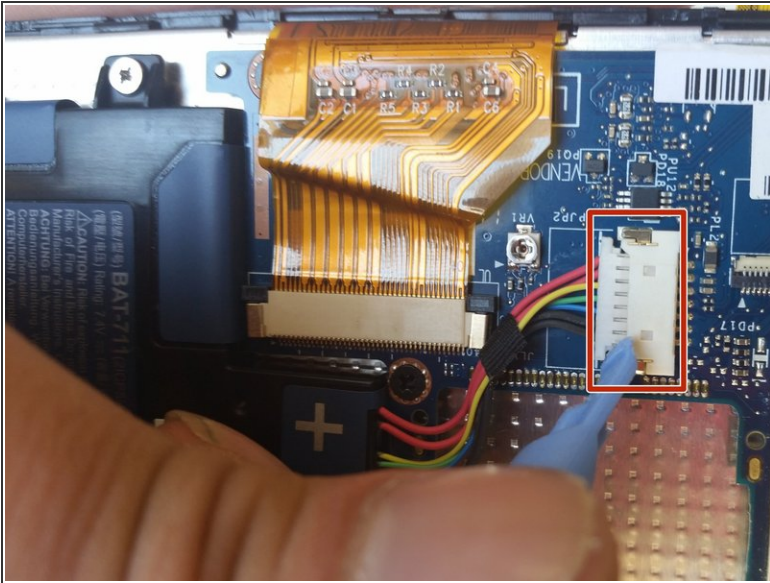
## Step 5



- Unscrew the 4mm screws located around the battery.

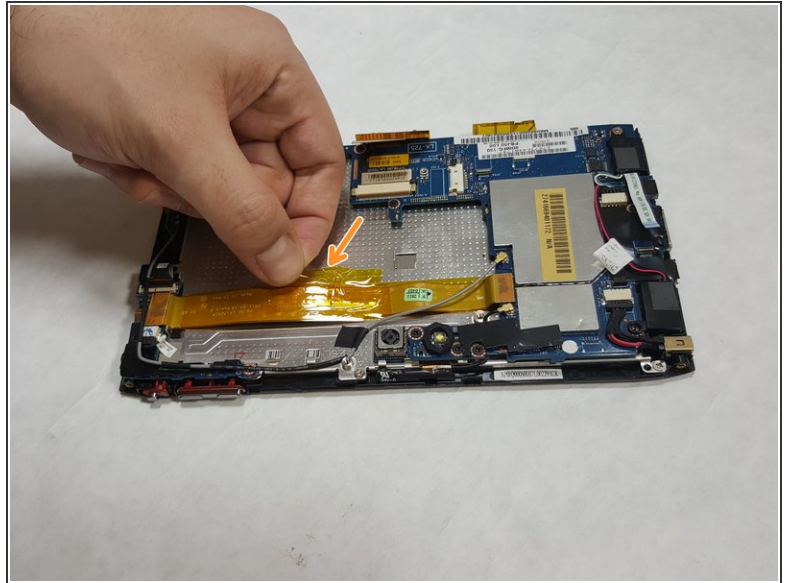
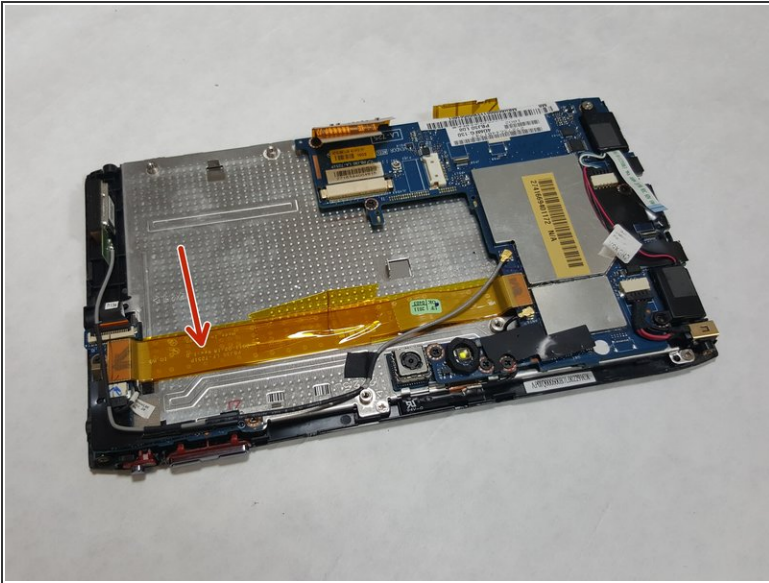
ⓘ There are five in total.

## Step 6



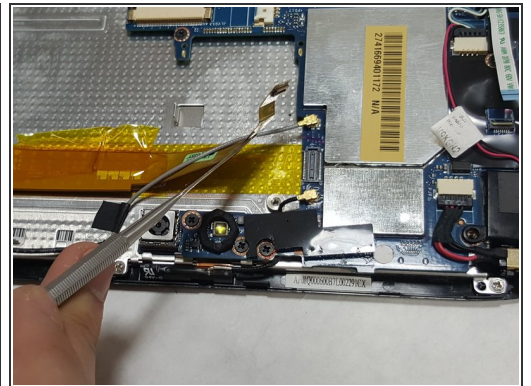
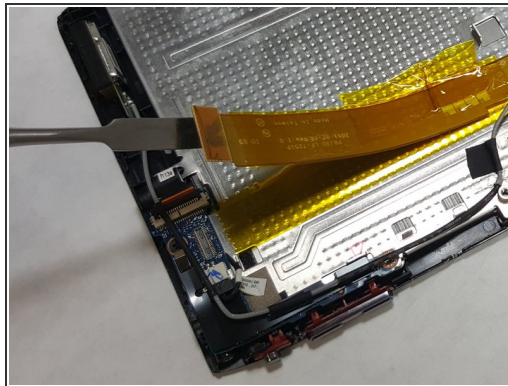
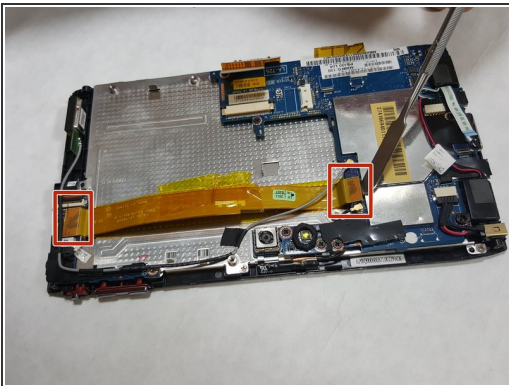
- Locate the battery cables and the tip of a plastic spudger or opening tool to gently push the connector head out of its socket.
- Use your fingers or the flat edge of a plastic opening tool to lift the battery up and off of the device.
- ⚠ Be sure to not have any water around the device while removing the battery.
- ⚠ Be sure to be cautious while removing the battery and remove carefully; avoid ripping the wires attached to the battery.

## Step 7 — I/O Board



- Locate the I/O Board FPC (a long orange strip) .
- Gently peel off any tape securing the FPC to the main plate.

## Step 8



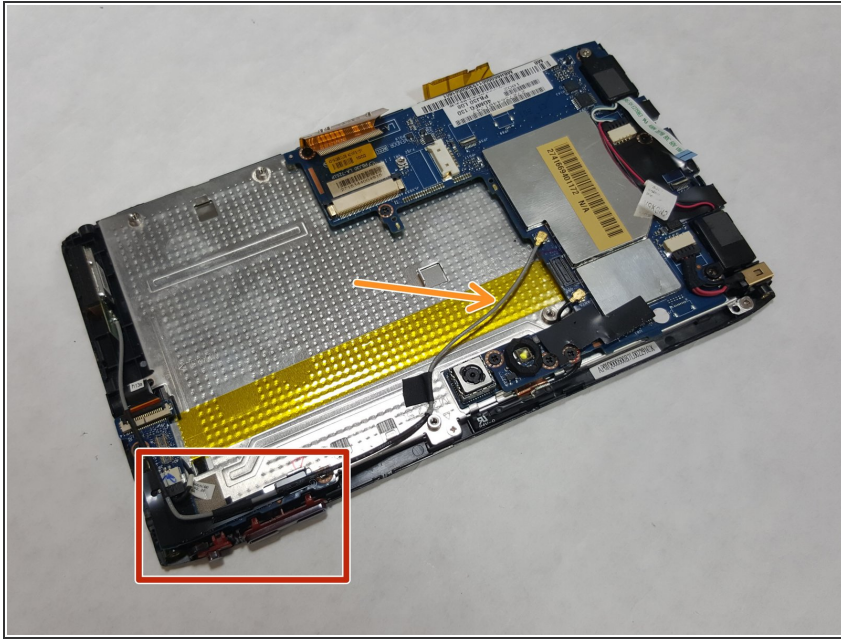
- Locate the two connectors at each end of the FPC.
  - Use the flat edge of a spudger tool or your fingernail to gently pry each connector straight upwards out of its socket, then remove the FPC cable from the unit.
- ⚠ While a metal spudger tool is shown here, it is best to use a *plastic* spudger / opening tool when possible, and only use a metal spudger as a last resort!

You should now see the yellow-colored strip on the metal base marking the location of the FPC

This document was generated on 2019-09-22 10:29:46 PM (MST).

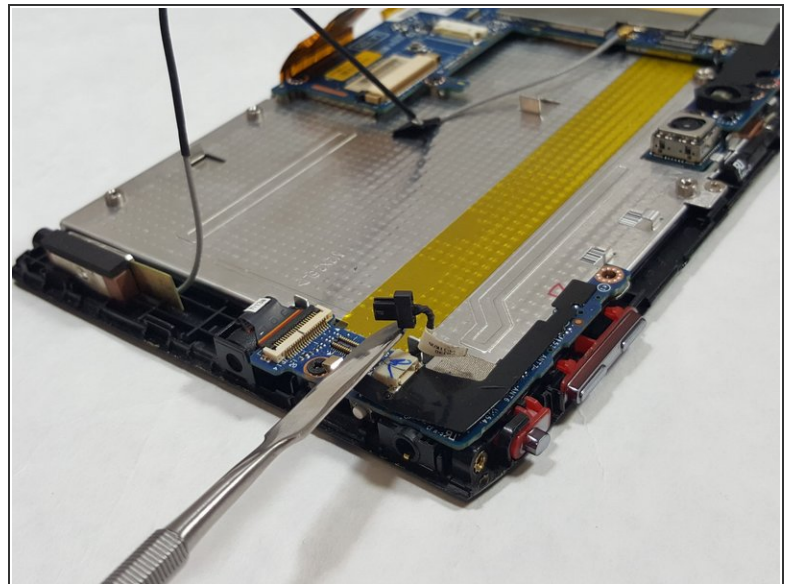
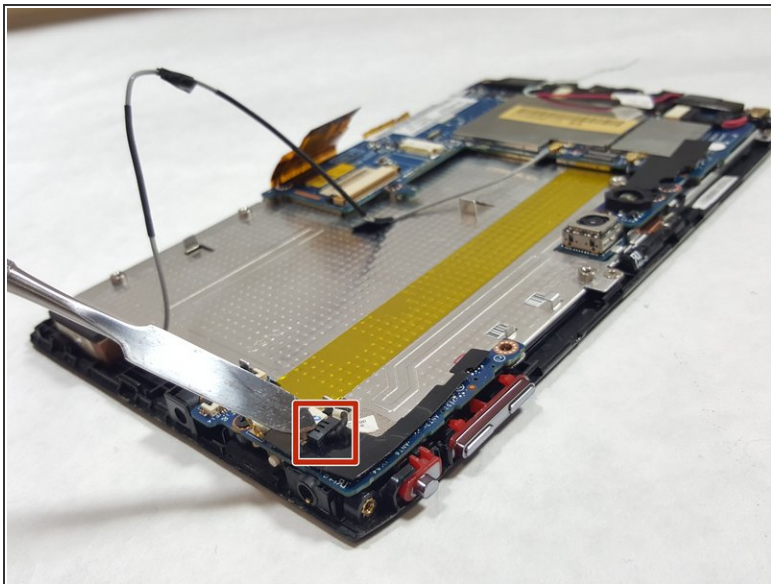


## Step 9



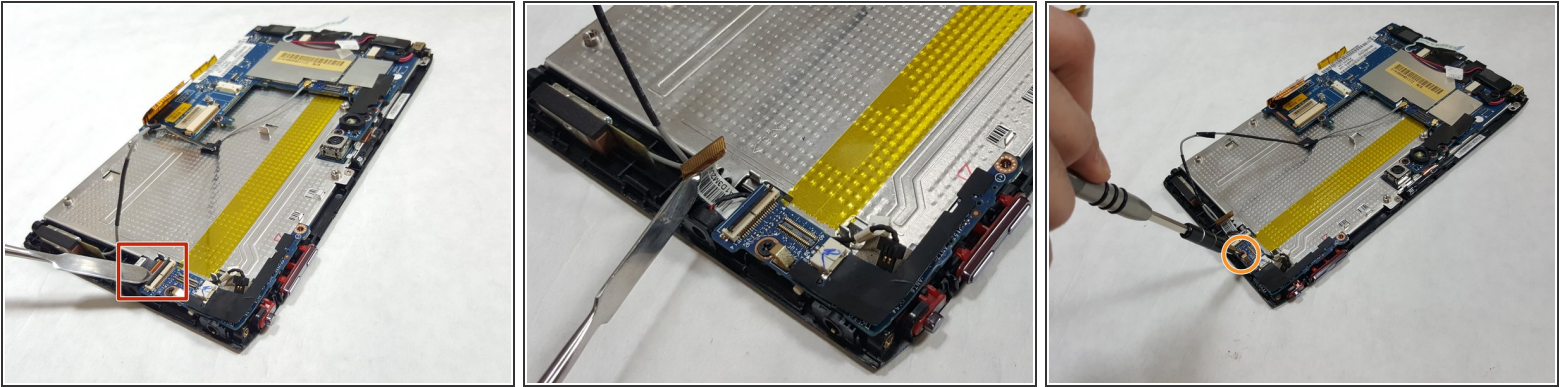
- Locate the L-shaped I/O Board.
- Locate the gray 3G Antenna wire.
- ⓘ If the gray 3G Antenna wire is connected to your I/O Board, disconnect it. If for some reason the 3G Antenna wire is *already disconnected* from the I/O Board (as it was in this device) simply lift it out of the way.

## Step 10



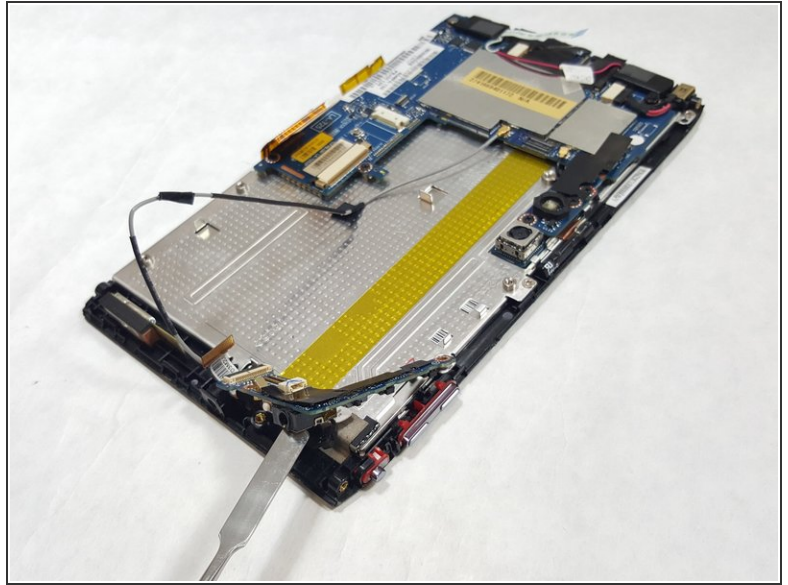
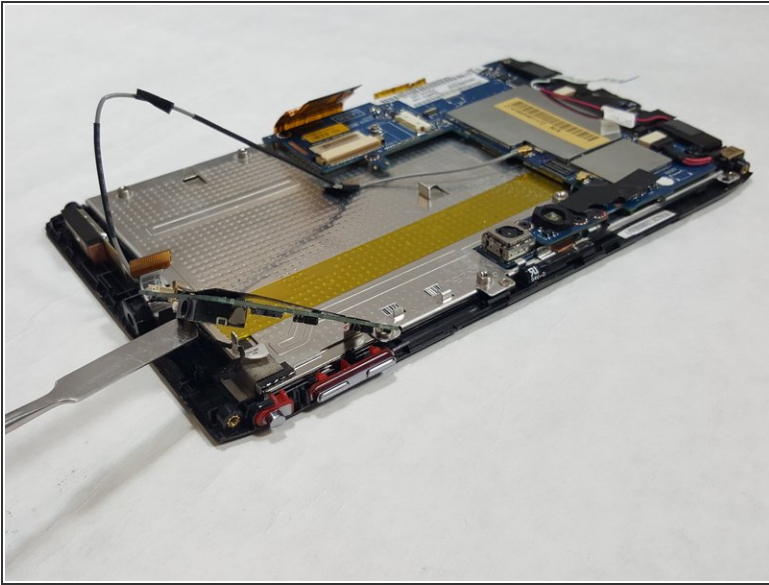
- Locate the microphone cable.
- You should be able to gently pull it out of its socket using only your fingers.
- ⓘ The spudger is used in the photo merely to hold up / identify the disconnected mic cable head.

## Step 11



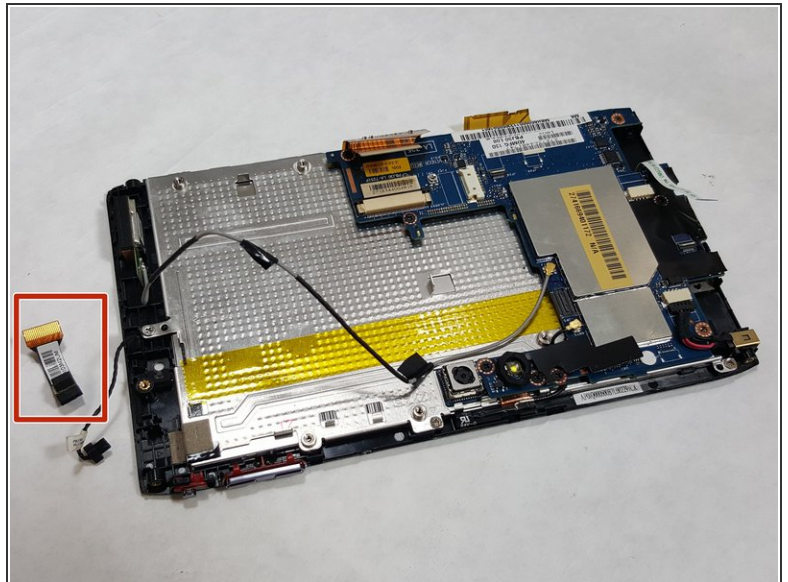
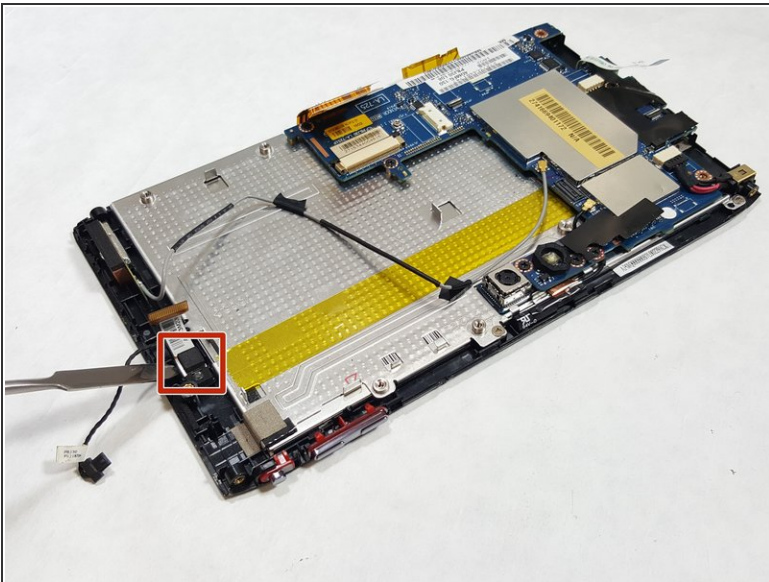
- Locate the light sensor connector.
  - Use the tip of a spudger or your fingernail to lift up and flip the small retaining flap on the connector. The light sensor ribbon cable should now be free, so simply pull it out.
- ⓘ This is a **ZIF (zero insertion force)** connector, which requires no force to remove / plug in the connector.
- ⚠ Please make sure you lift up on the small retaining flap on the connector, not the connector itself!
- Use a Phillips #00 screwdriver to unscrew the single 3.0mm Phillips screw next to the light sensor connector.

## Step 12



- Carefully lift the I/O Board off the device.

## Step 13 — Light Sensor



- To remove the light sensor, use the flat edge of a spudger, plastic opening tool, or your fingernail to gently pry the top of the square connector straight up and out of its socket.

⚠ While a metal spudger tool is shown here, it is best to use a *plastic* spudger / opening tool when possible, and only use a metal spudger as a last resort!

To reassemble your device, follow these instructions in reverse order.