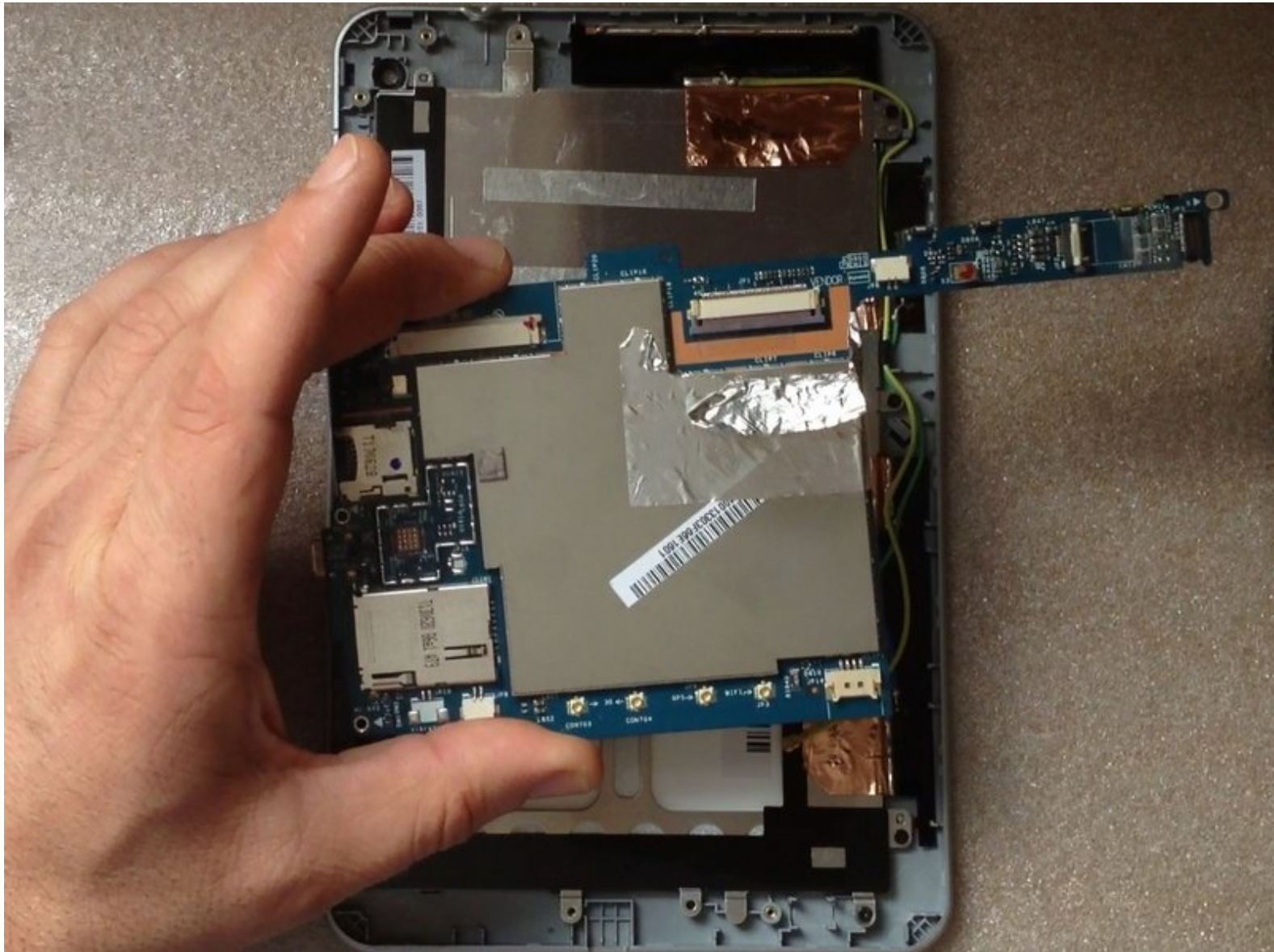




# Acer Iconia B1-711 V1-711 Logic Board Replacement

Acer Iconia B1-711 Logic Board Replacement

Written By: ZFix



# INTRODUCTION

Acer Iconia B1-711 - How to disassemble the device and replace the Logic Board.

[Please SUBSCRIBE to my channel ツ](#)

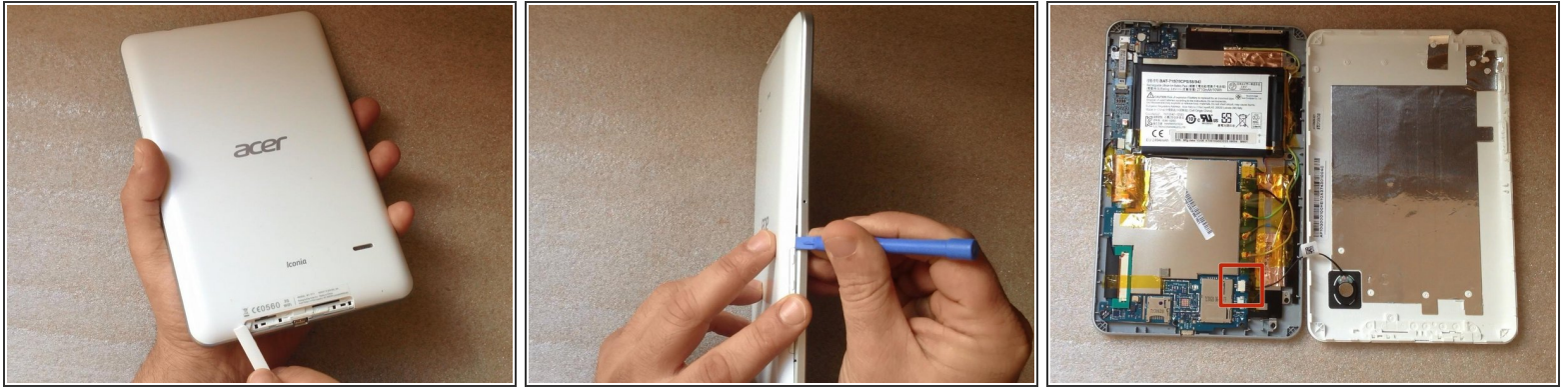
[video: <https://www.youtube.com/watch?v=8-djJ2aXa60>]



## TOOLS:

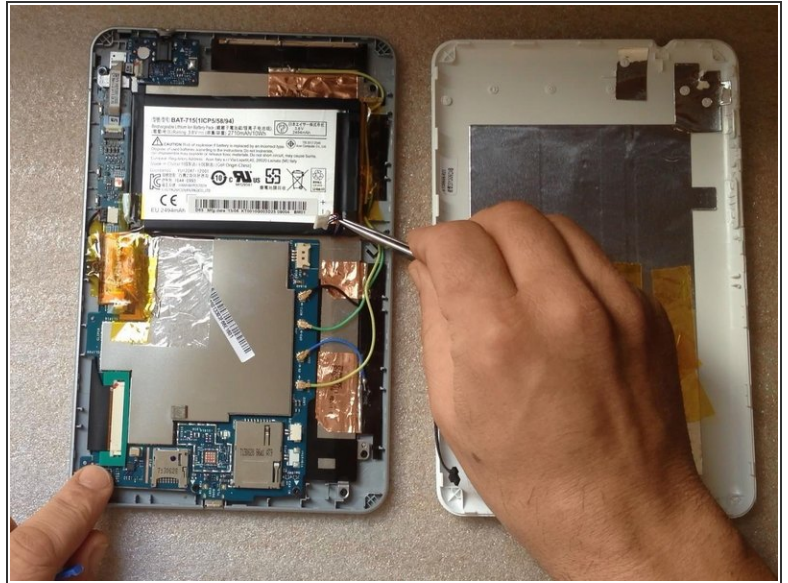
- [Tweezers](#) (1)
- [Phillips #0 Screwdriver](#) (1)
- [iFixit Opening Tools](#) (1)
- [Spudger](#) (1)

## Step 1 — Back Cover



- Switch-off the tablet.
  - Remove any SIM and/or Memory Card.
  - Start opening near to the Volume Up/Down buttons. It's more well to use a plastic opening tool to avoid damaging the cover.
- ⚠ When lifting the cover, be careful not to tear the Loudspeaker cable at the bottom right side.
- Disconnect the Loudspeaker cable from the Logic board.

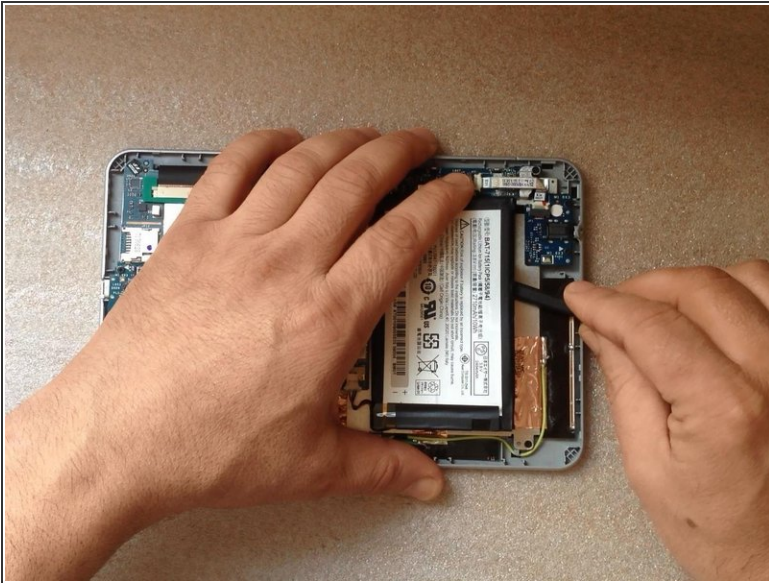
## Step 2



⚠ Before doing anything, disconnect the battery.

👉 [Please SUBSCRIBE to my channel ツ](#)

## Step 3 — Battery

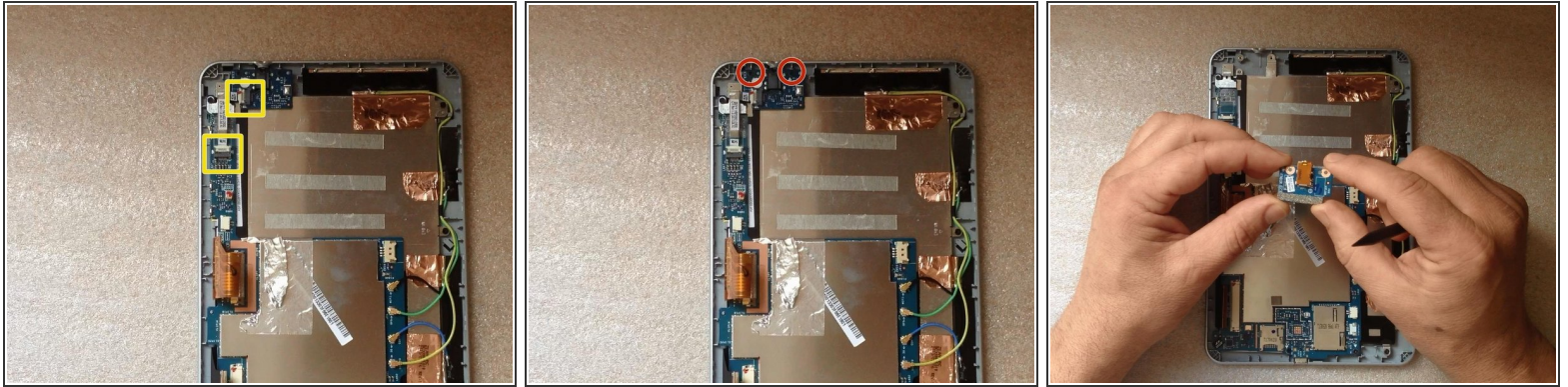


- With a long plastic tool like a spudger, unstick the battery from the metal LCD shield.
- Lithium Ion Battery Pack - 3.8V, 2710mAh



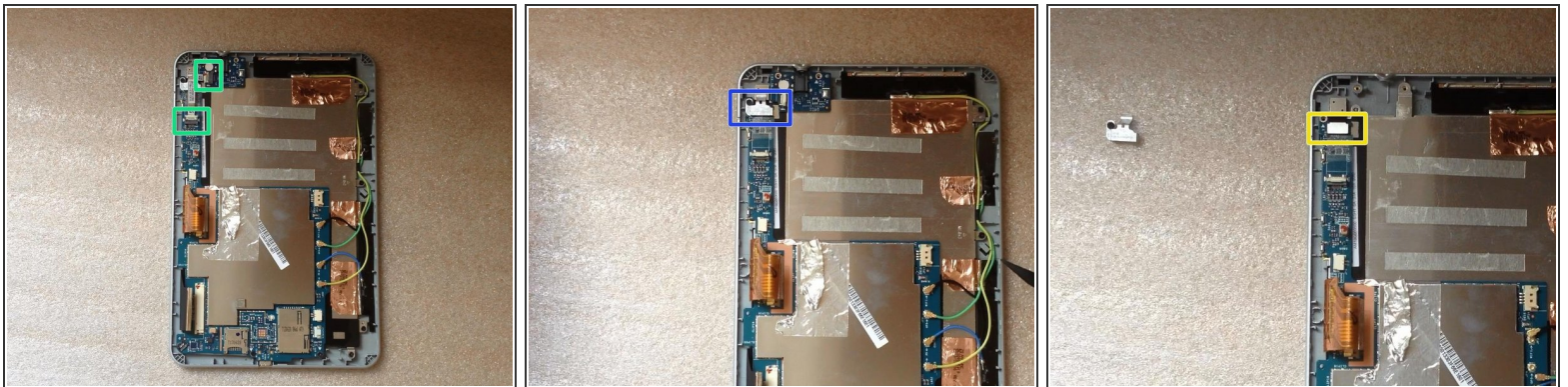
[Please SUBSCRIBE to my channel ツ](#)

## Step 4 — Audio Jack Connector



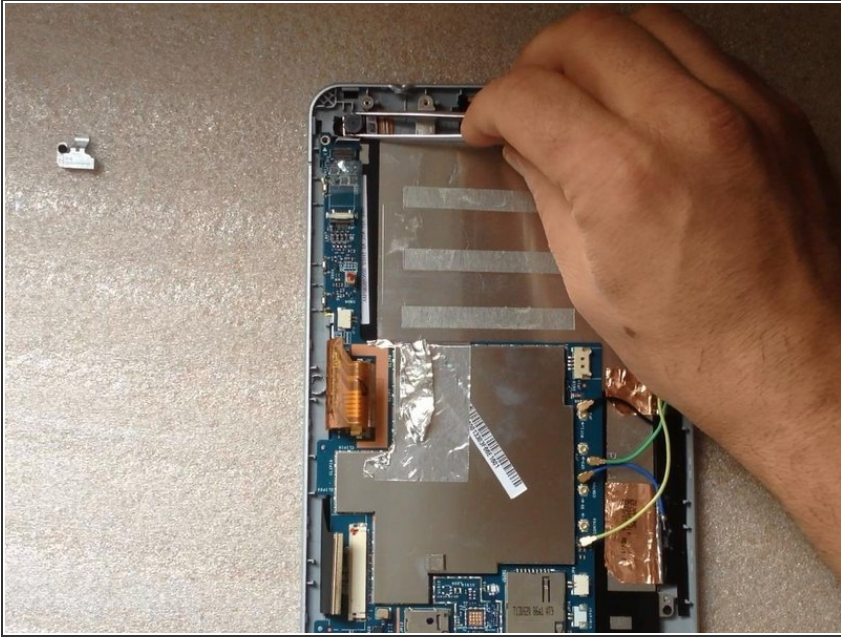
- Disconnect and remove the Audio Jack Board flex cable.
- Unscrew 2x Philips screws
- Remove the board with the Audio Jack Connector.
- .
- [Please SUBSCRIBE to my channel ツ](#)

## Step 5 — Camera



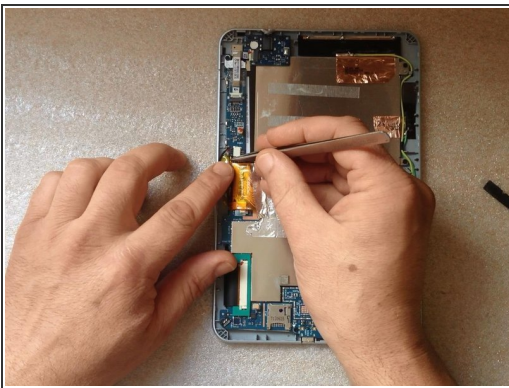
- Remove the Audio jack flex cable.
- Remove the metal plate which is placed on the camera connector.
- Disconnect the camera flex cable.

## Step 6



- Remove the camera.
- [Please SUBSCRIBE to my channel ツ](#)

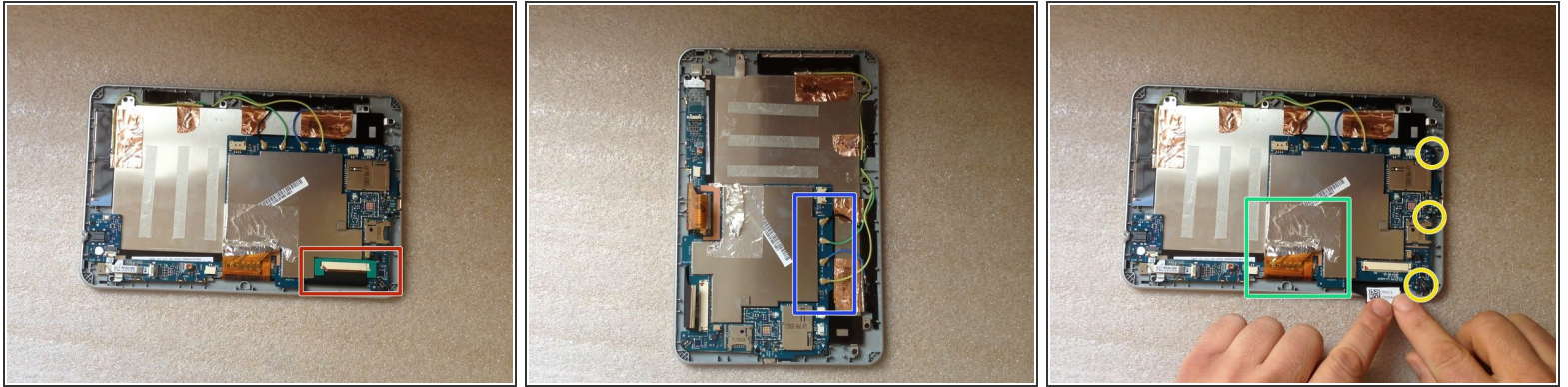
## Step 7 — Microphone



- Remove the tape from the microphone.
- Disconnect the Microphone wires and remove the Microphone.

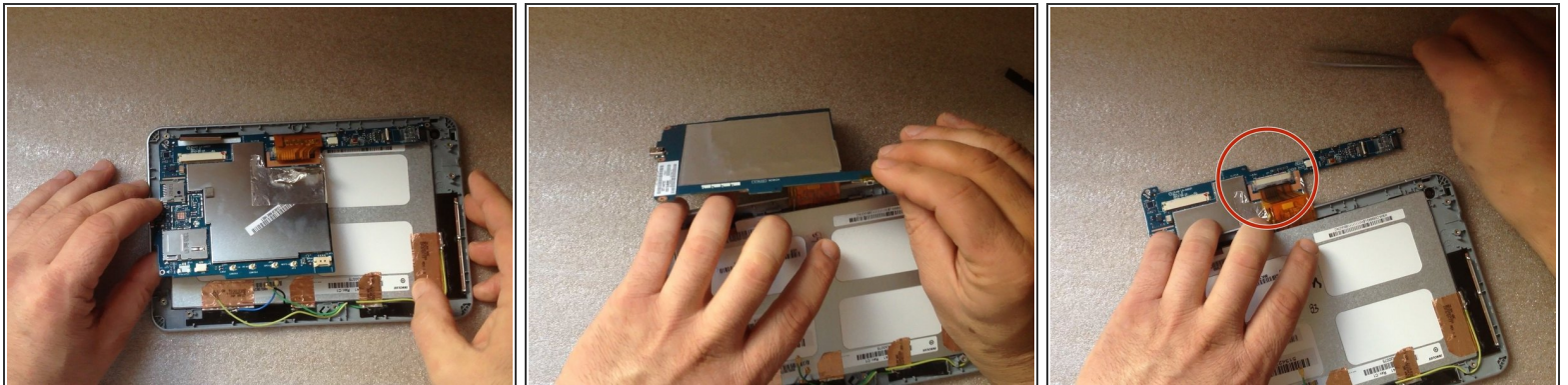
★ [Please SUBSCRIBE to my channel ツ](#)

## Step 8 — Logic Board



- Remove the green rubber and disconnect the touch screen flex cable.
- Disconnect the 4 coaxial antenna cables (Wi-Fi, GPS, 3G).
- Carefully unstuck the metal folio from the LCD display flex cable.
- Remove the 3x Phillips screws.

## Step 9



- Lift the board from the side of the battery connector and turn it around the display connector on 360 degrees.
- ⚠ Be careful for the flex cable!
- Disconnect the LCD display flex cable.

## Step 10



- This is the Logic board.
- [Please SUBSCRIBE to my channel ツ](#)

To reassemble your device, follow these instructions in reverse order.