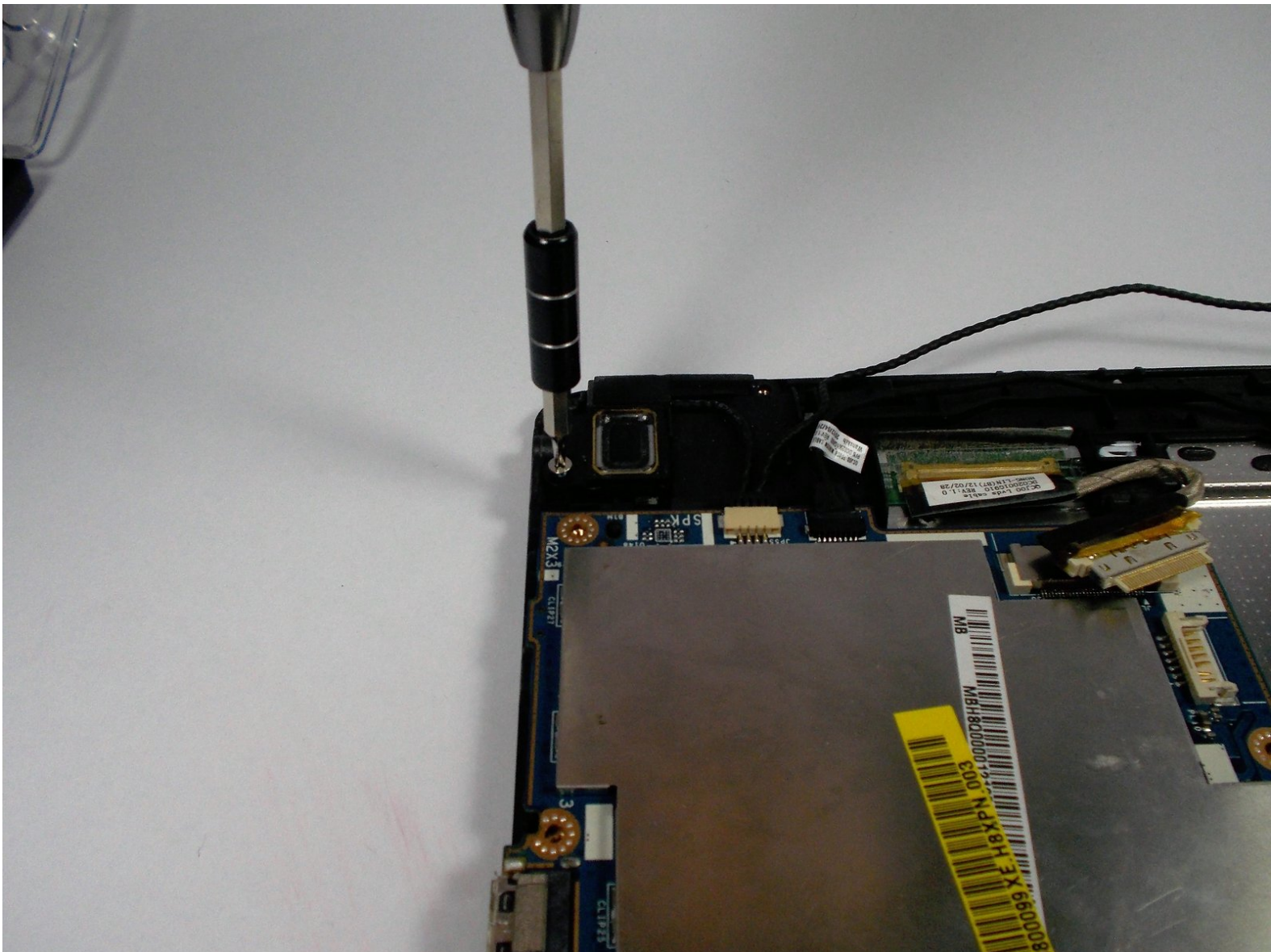




# Acer Iconia Tab A200 Speaker Replacement

This guide will show you how to replace the dual interior speakers for the Acer Iconia Tab A200.

Written By: Steve Chiu



## INTRODUCTION

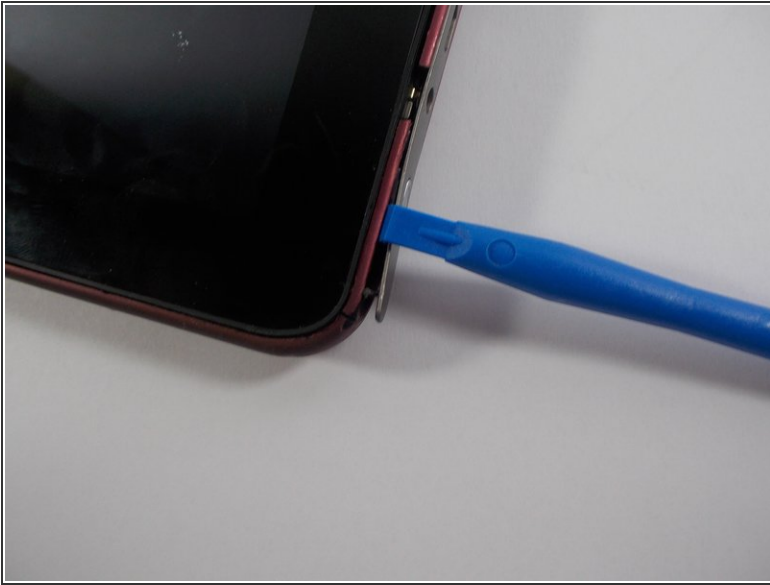
The dual speakers are used to play sound from the device. The wiring for the speakers may also be difficult to see as they are black and blends in with the case. If you are having trouble see the wires try using a flashlight.



### TOOLS:

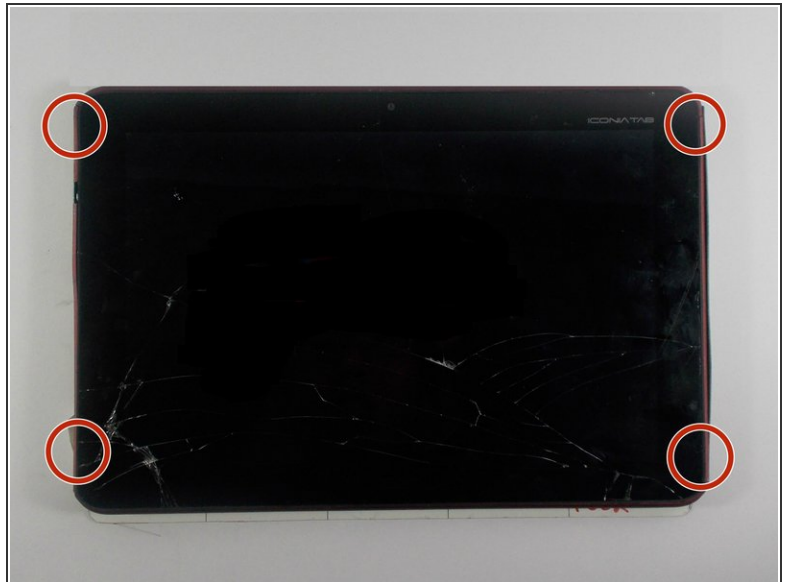
- [Phillips #00 Screwdriver](#) (1)
  - [iFixit Opening Tools](#) (1)
-

## Step 1 — Battery



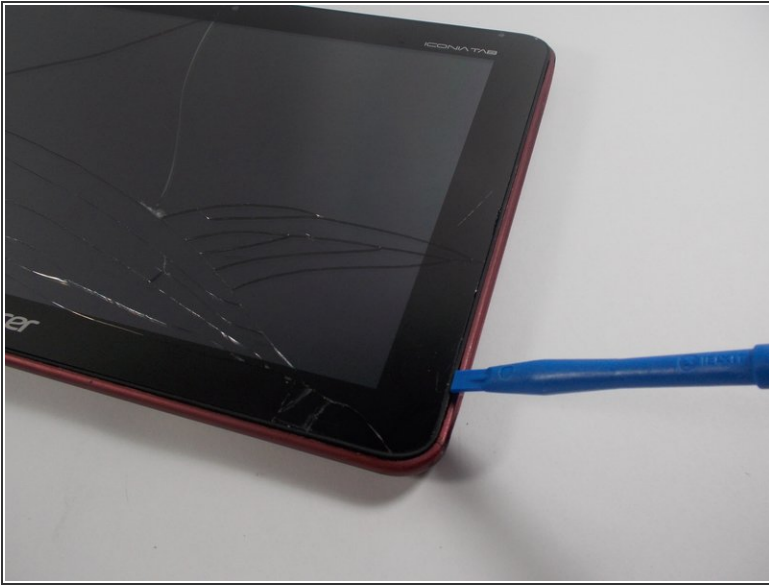
- With the plastic opening tool pry open the grey plastic siding on both sides of the tablet.

## Step 2



- Using a Phillips #00 screwdriver remove the 4.0 mm screws on the sides of the tablet.
- ⓘ There are two screws on each side of the tablet that need to be removed before the back casing can be removed.

## Step 3



- Once the 4 screws have been removed use the plastic opening tool to pry open the device on the side of the device.
  - ⚠ Be careful prying on the sides where you removed the screw as the plastic casing is not very strong and may break.
- After prying open the case with the plastic opening tool carefully remove the case from the device and place the device face down on its screen.

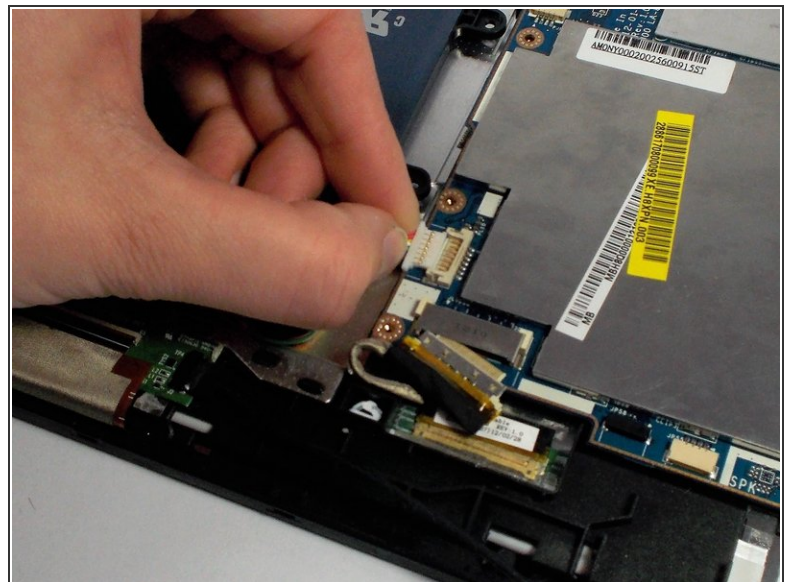


## Step 4



- Using a Phillips #00 screwdriver remove the 4.0 mm screws holding the battery in place.

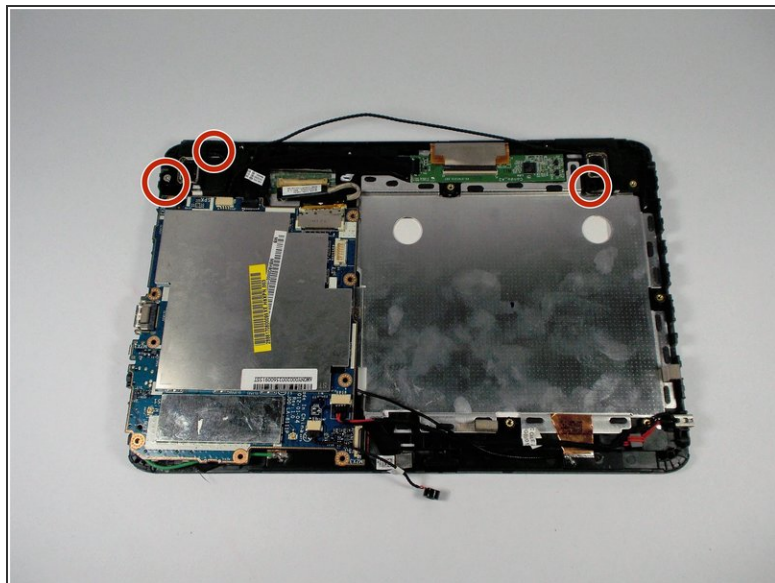
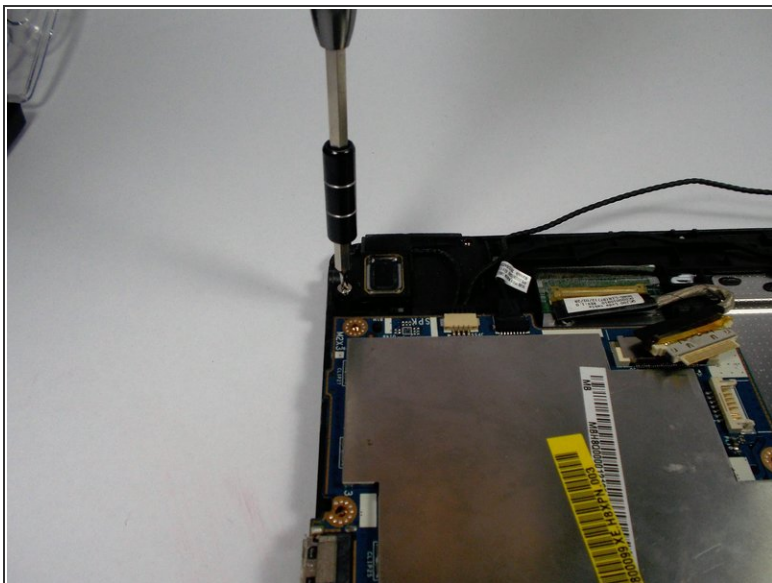
## Step 5



- Lift the battery out of the device, and disconnect the cable attached to the motherboard by pulling it out to the side not lifting it up.

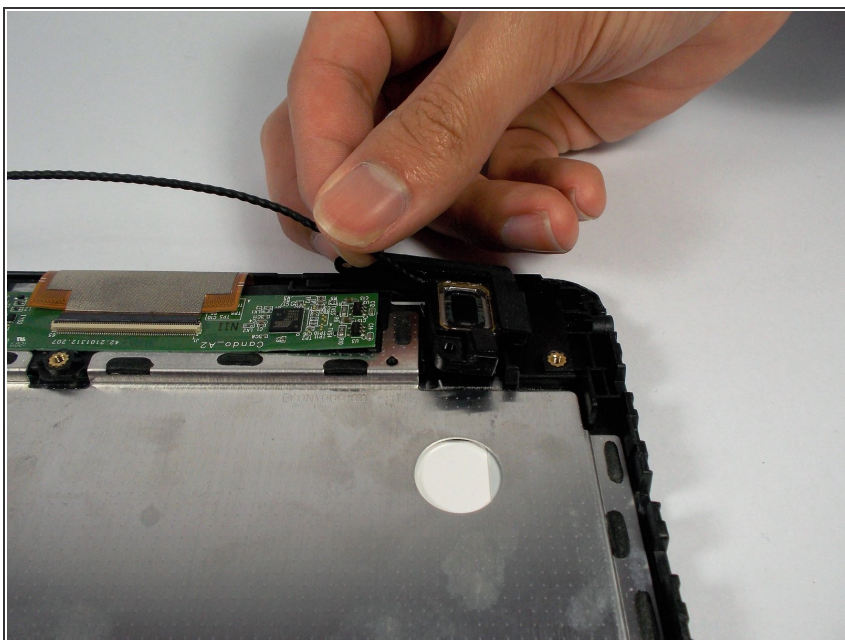


## Step 6 — Speaker



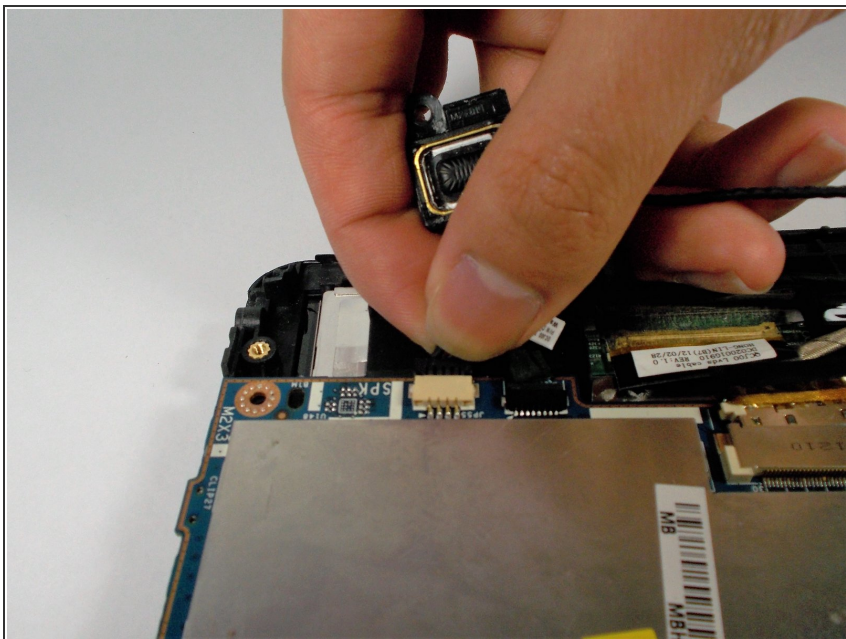
- After removing the battery use a Phillips head #00 screwdriver to remove the 3.0 mm screws holding the dual speakers in place.

## Step 7



- Once the screws are removed, lift up on the speakers to remove them from the case.

## Step 8



- Once you have removed the speakers from the case, disconnect the speakers from the motherboard by pulling the cable out horizontally. Do not pull up on the cable.

To reassemble your device, follow these instructions in reverse order.