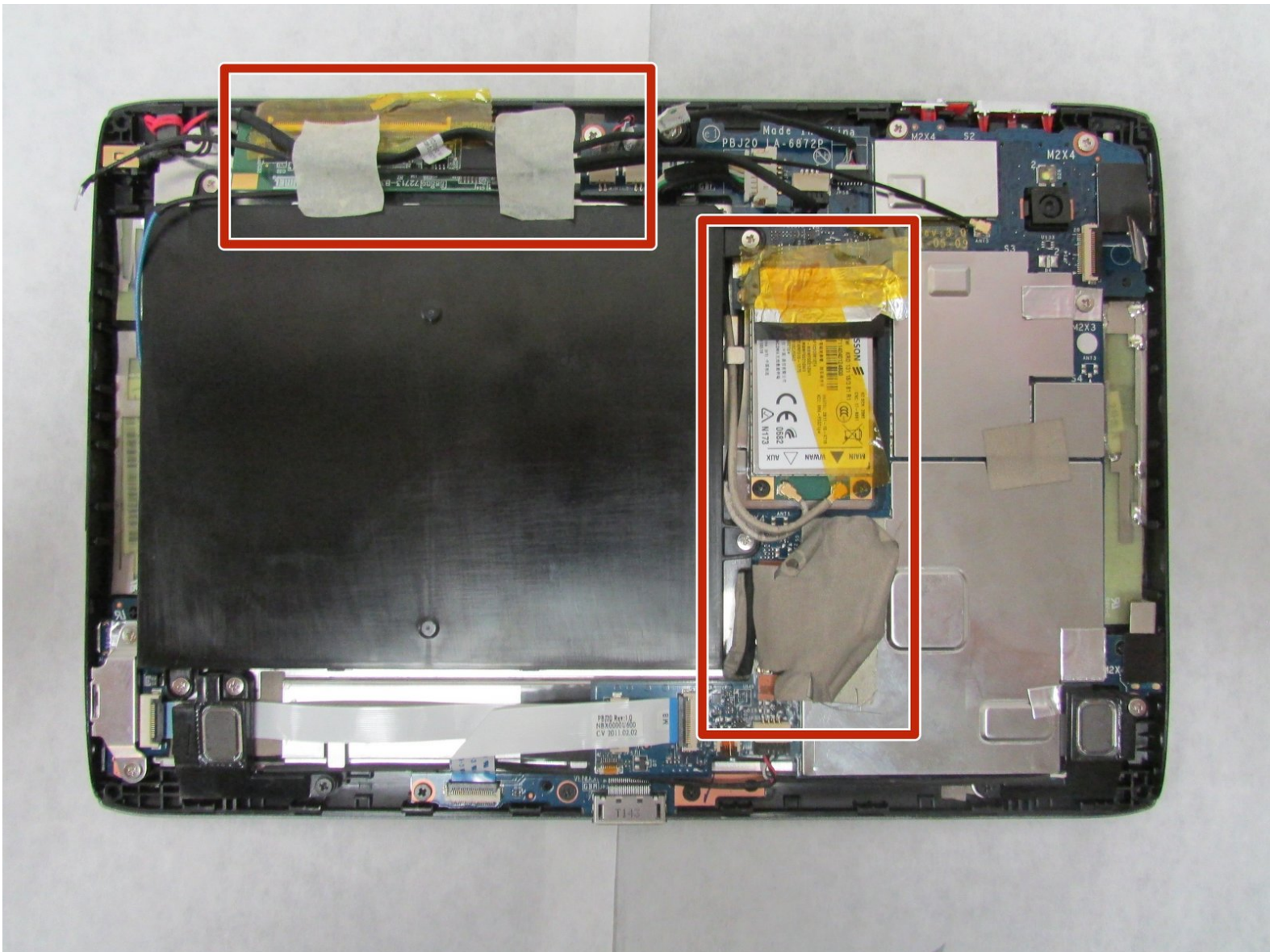




Acer Iconia Tab A501 Display Replacement

This guide will enable the user to replace the display on the device.

Written By: Daksh Malhotra



INTRODUCTION

A display shows you what is happening on your device. Without a working display, a device isn't much use. This guide will show you how to replace the display on your Acer Iconia Tab A501.

TOOLS:

- [Spudger](#) (1)
- [ESD Safe Tweezers Blunt Nose](#) (1)
- [iFixit Opening Tools](#) (1)
- [Tweezers](#) (1)

Angled

- [Halberd Spudger](#) (1)
 - [Jimmy](#) (1)
 - [Phillips #1 Screwdriver](#) (1)
-

Step 1 — Back Cover



 Turn off your device before opening it.

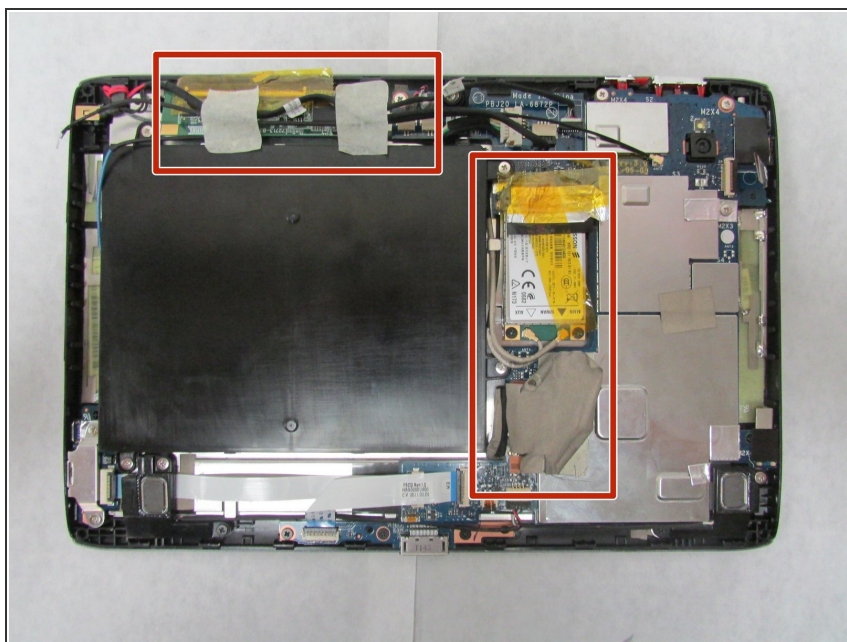
- Use a plastic opening tool to carefully separate the back cover, starting at the volume buttons.
- Continue separating the back cover along the short side closest to the camera and around the device.

Step 2



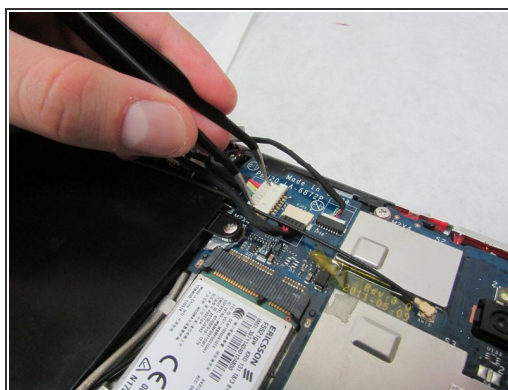
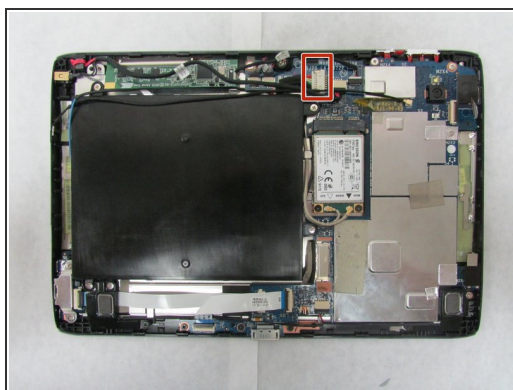
- When separated enough, a little more than halfway around the device, the back cover will be easy to take off.

Step 3 — Display



- Remove all tape from the device.

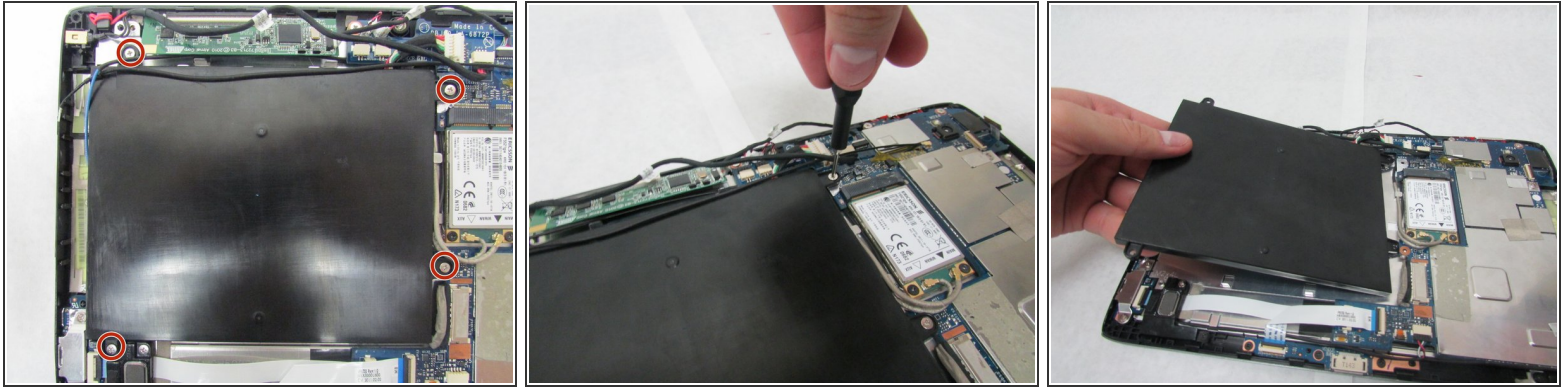
Step 4



⚠ In the next step, be careful not to squeeze too hard or scratch the motherboard.

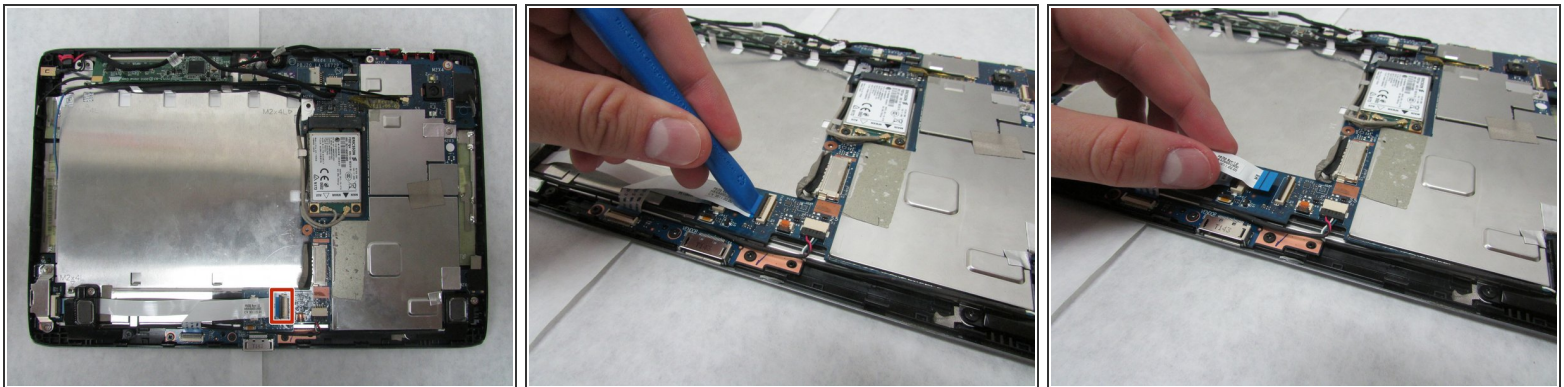
- Use the angled tweezers to disconnect the motherboard-battery cable from the white connector in the middle of the side opposite the docking port.

Step 5



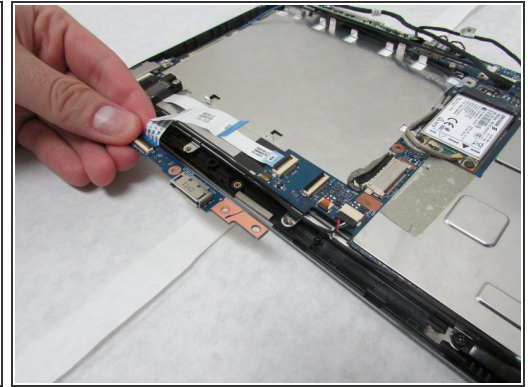
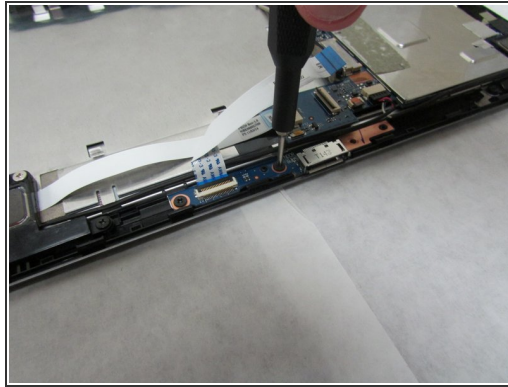
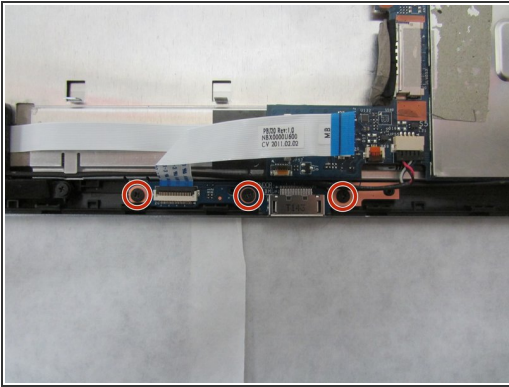
- Use a Phillips #1 screwdriver to remove the four 4.0 mm Philips head screws connecting the battery to the motherboard.
- Take out the battery.

Step 6



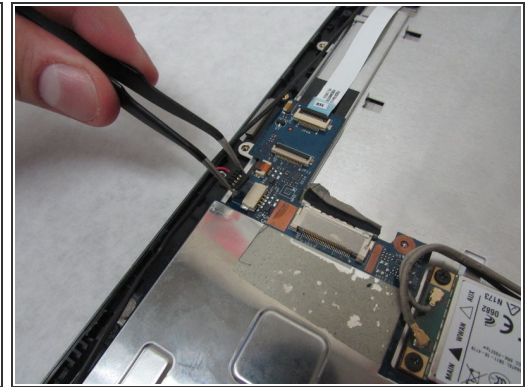
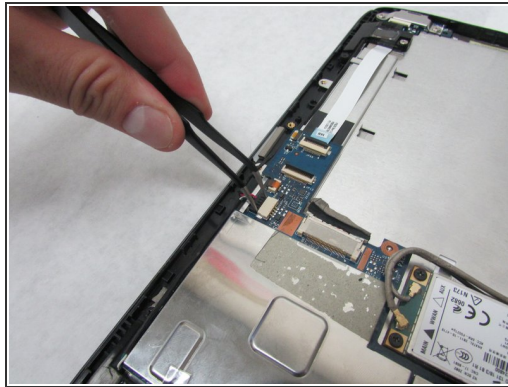
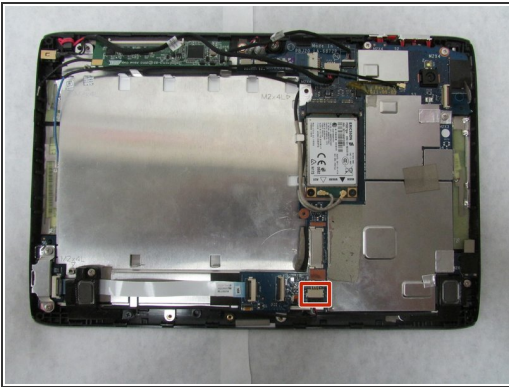
- Use the plastic opening tool to flip up the locking mechanism on the motherboard connected to the folded, white ribbon cable.
- Remove the folded, white cable.

Step 7



- Use a Phillips #1 screwdriver to unscrew the three 3.0 mm Philips head screws holding the docking port in place.
- Remove the docking port.

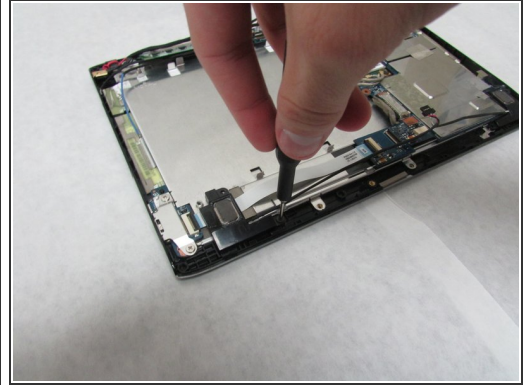
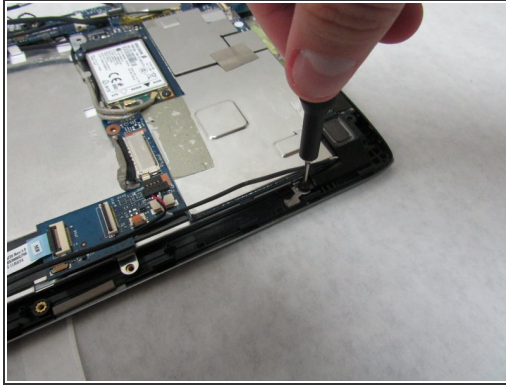
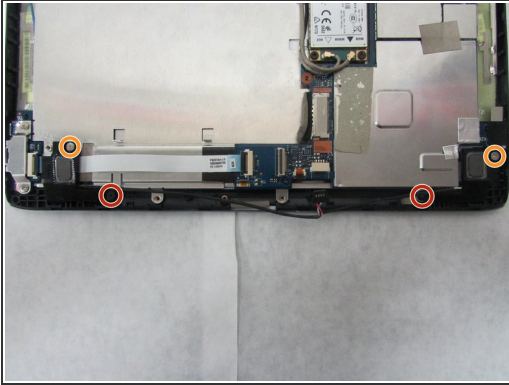
Step 8



⚠ In this step, be careful not to squeeze too hard or scratch the motherboard.

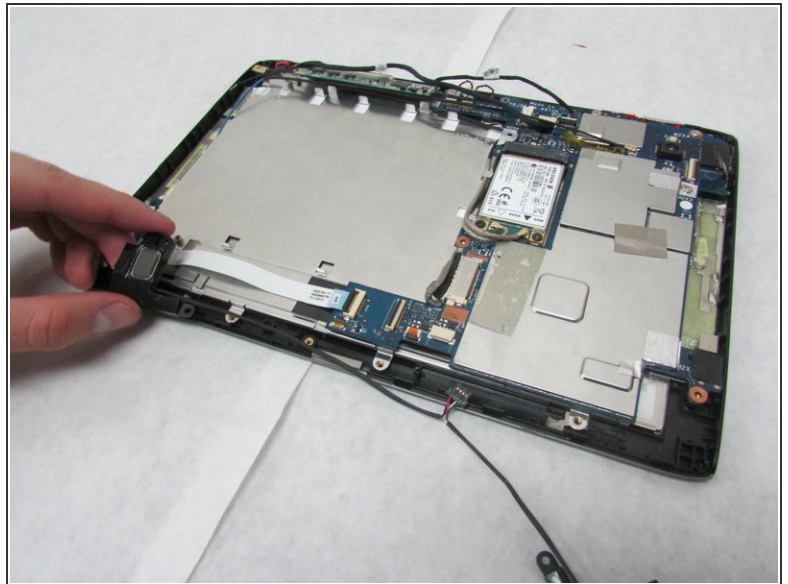
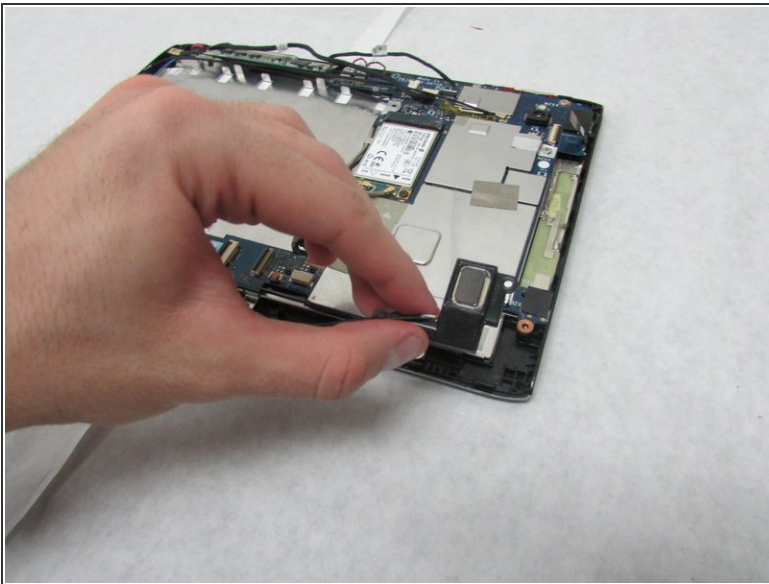
- Use the angled tweezers to disconnect the cable with red, white and green wires from the beige connector slightly in from the docking port.

Step 9



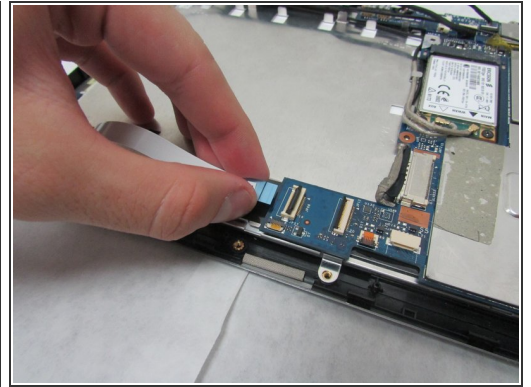
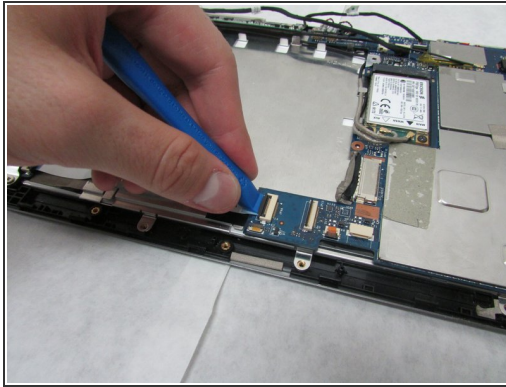
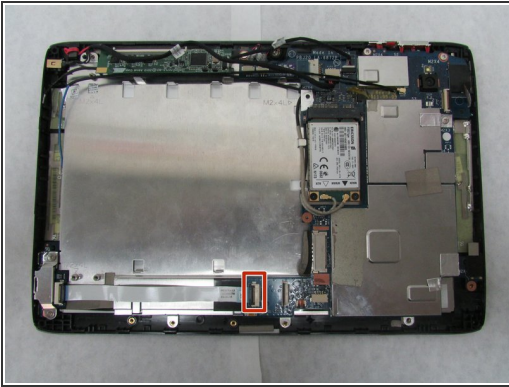
- Unscrew the 3.0 mm Phillips head screw on each speaker using a Phillips #1 screwdriver.
- Unscrew the 4.0 mm Phillips head screw on each speaker using a Phillips #1 screwdriver.

Step 10



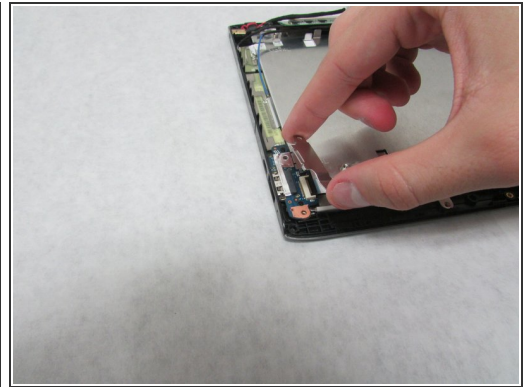
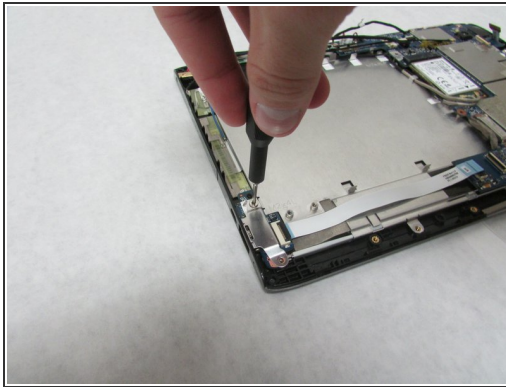
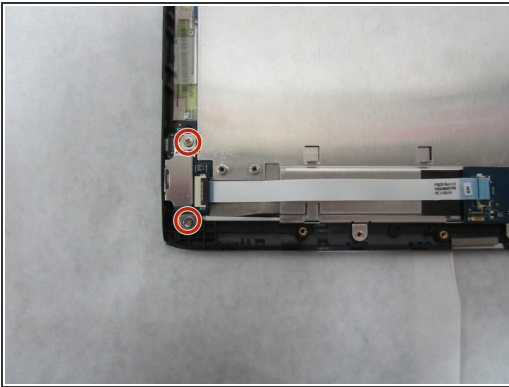
- Remove the speakers.

Step 11



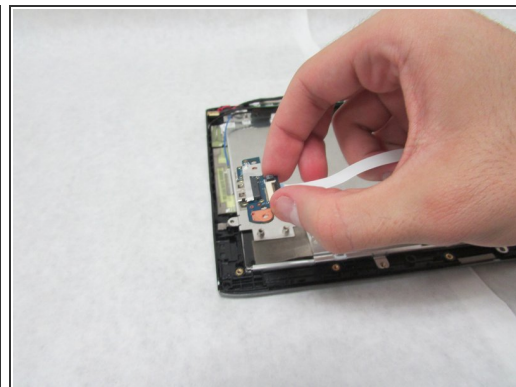
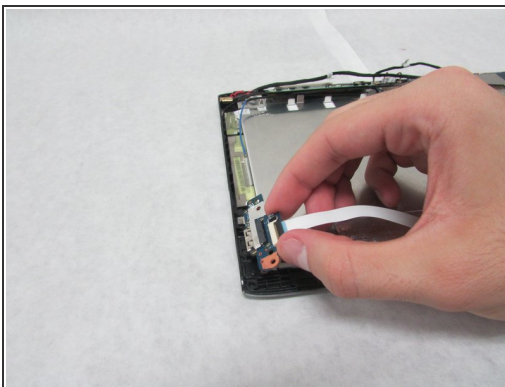
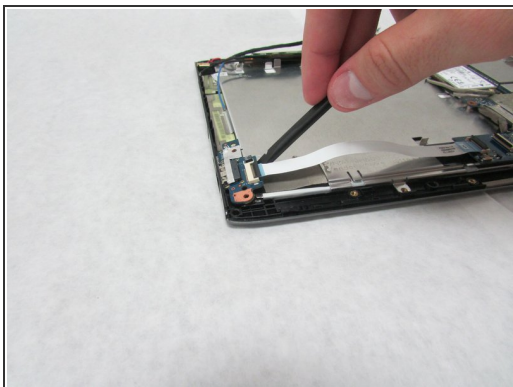
- Use the plastic opening tool to flip up the locking mechanism on the motherboard connected to the straight, white ribbon cable.
- Remove the straight, white ribbon cable.

Step 12



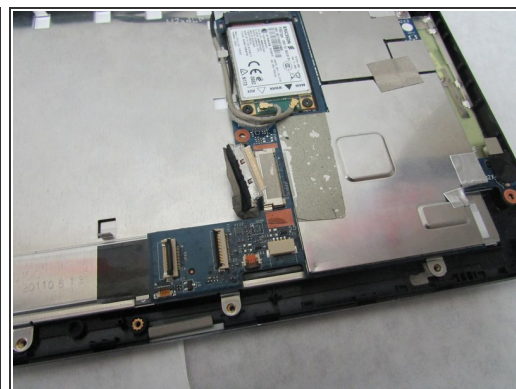
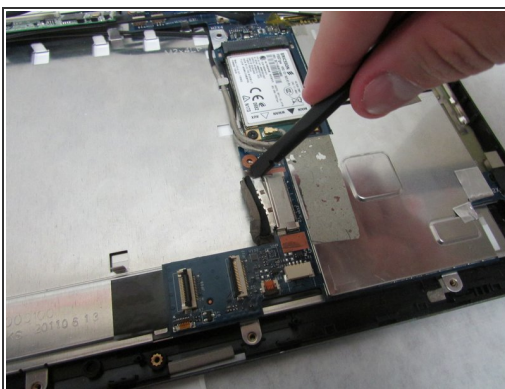
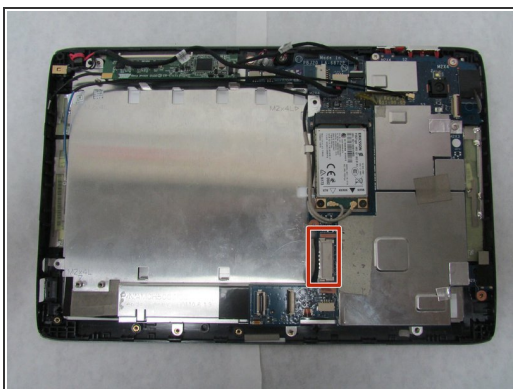
- Use a Phillips #1 screwdriver to remove the two 4.0 mm Philips screws attaching the metal plate, USB board, and device.
- Remove the metal plate.

Step 13



- Use the Halberd Spudger to carefully pop up and take out the ports.

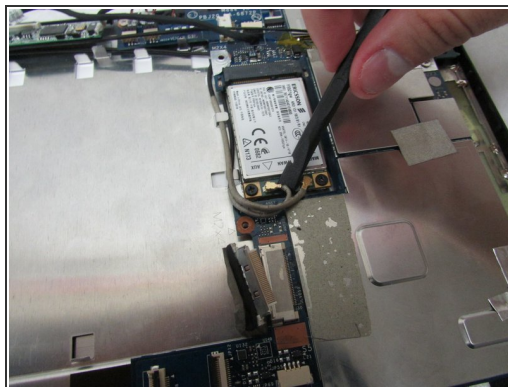
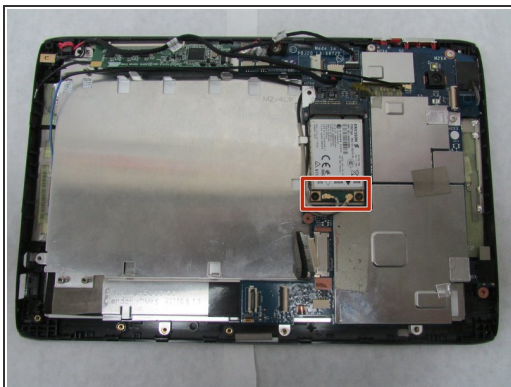
Step 14



⚠ Use care in the next step.

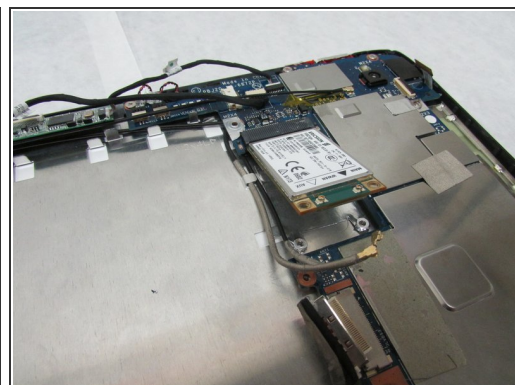
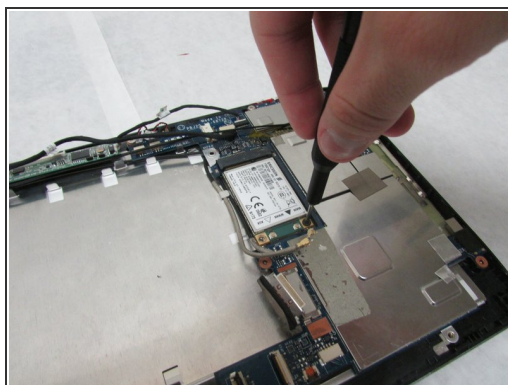
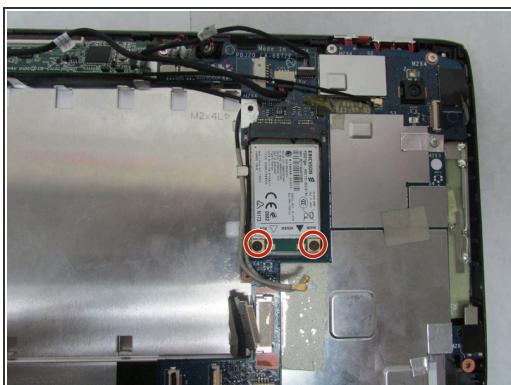
- Use the wide, flat end of the standard Spudger to disconnect the display connector from the large, metal port next to the battery space.

Step 15



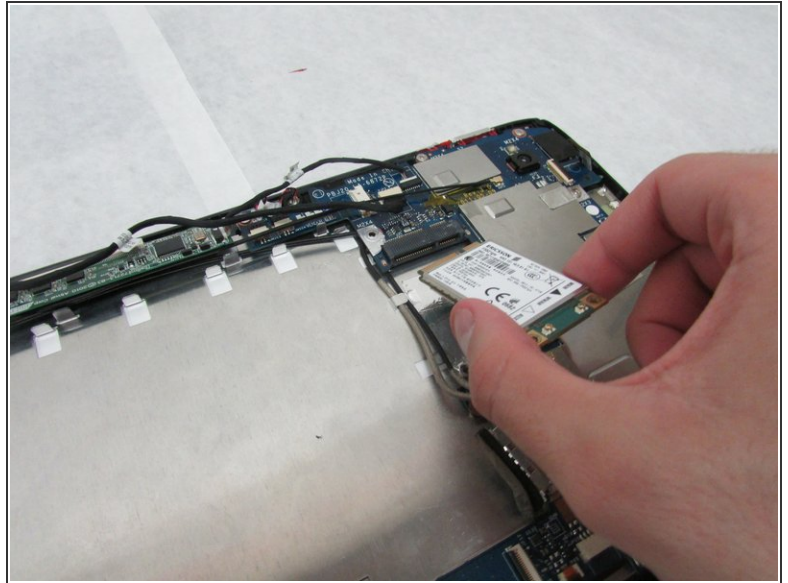
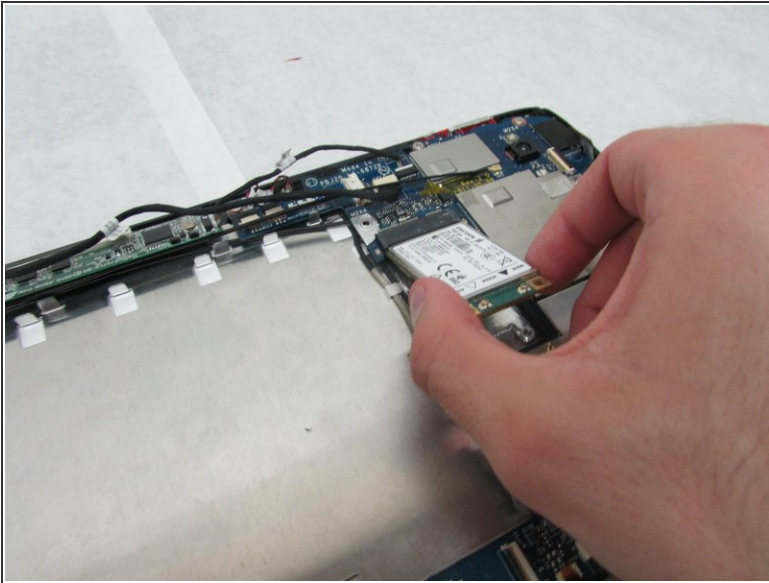
- Use the flat end of the standard Spudger to disconnect the two small, rotatable connectors attached to the wireless adapter.

Step 16



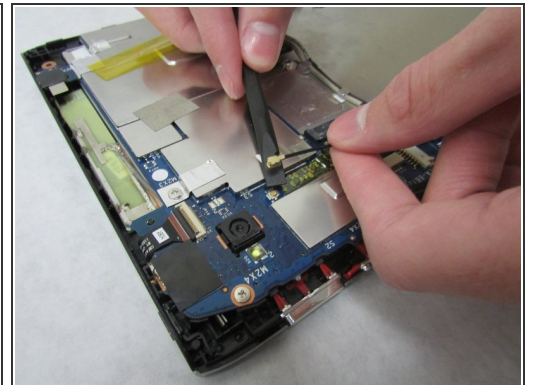
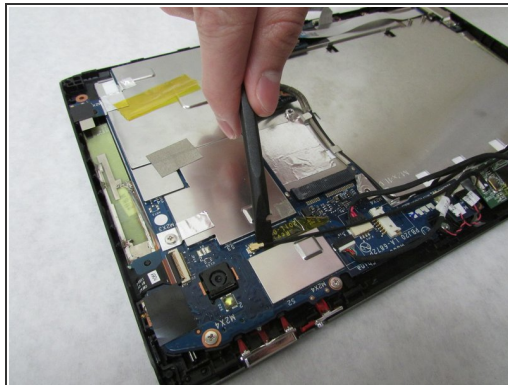
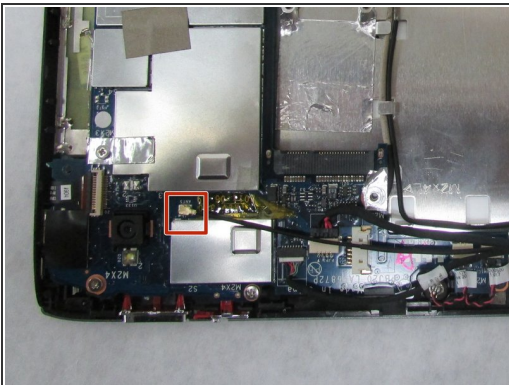
- Use a Phillips #1 screwdriver to remove the two 3.0 mm Philips head screws holding the adapter down.

Step 17



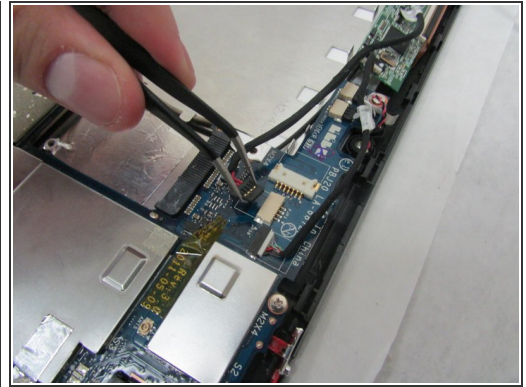
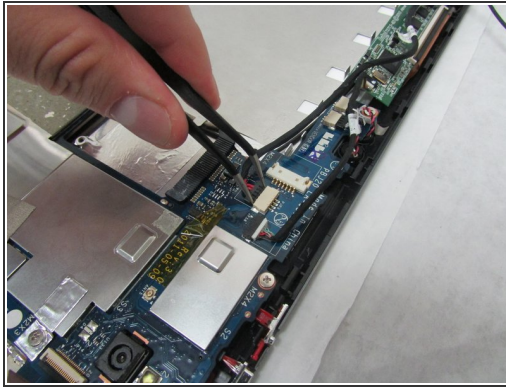
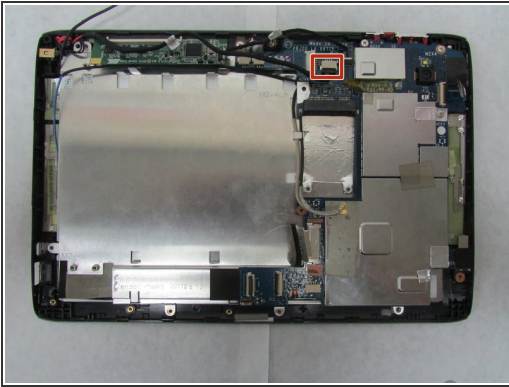
- Carefully slide the adapter out to remove it.


Step 18



- Use the wide end of the standard Spudger to take off the rotatable connector to the 3g antenna below the rear-facing camera.

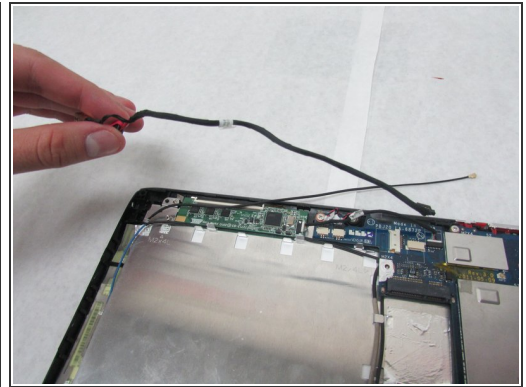
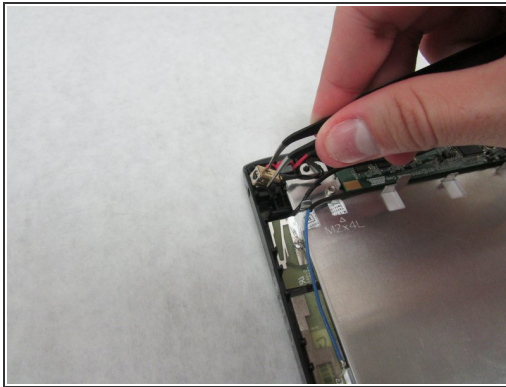
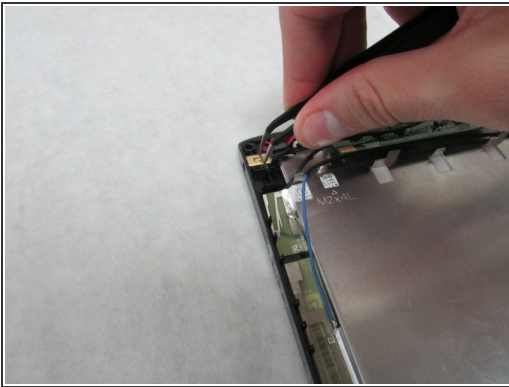
Step 19



 In the next step, be careful not to squeeze too hard or scratch the motherboard.

- Use the angled tweezers to disconnect the cable with red wires from the beige connector opposite the docking port.

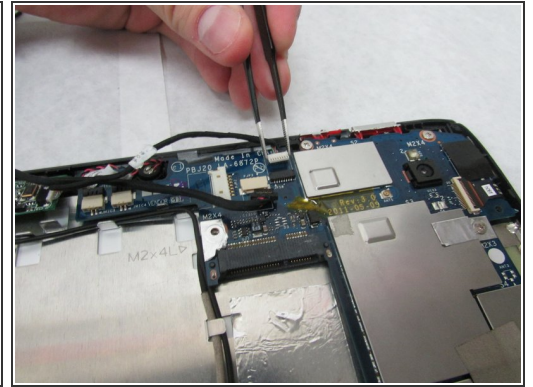
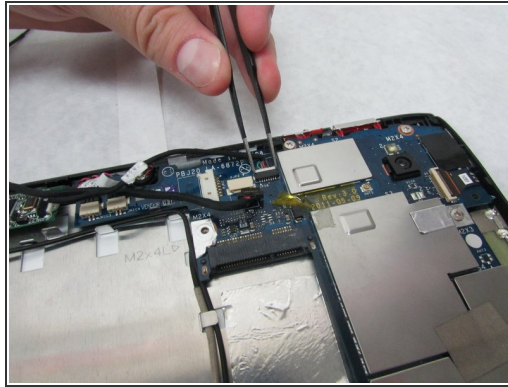
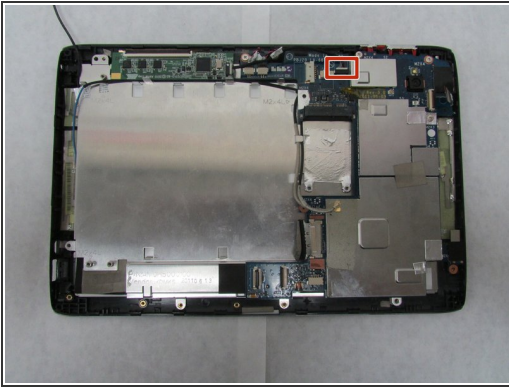
Step 20




 The charging port may be taped from underneath and need a bit of force to take out.

- Use the angled tweezers to remove the charging port.

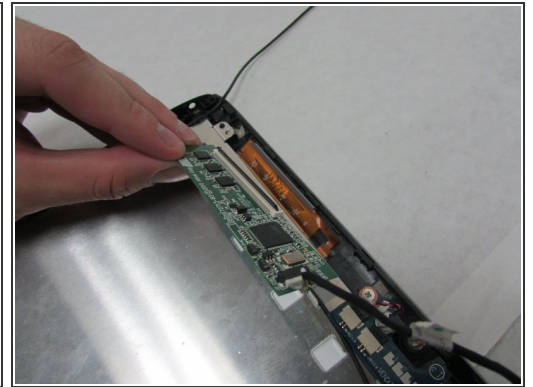
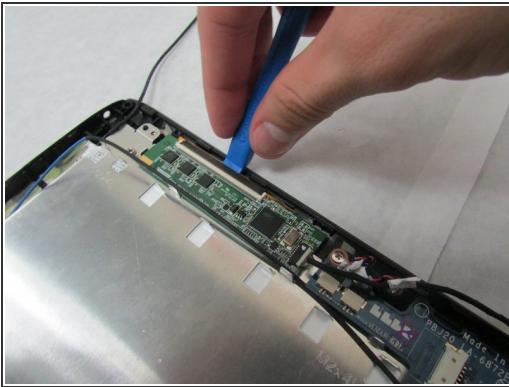
Step 21



 In this step, be careful not to squeeze too hard or scratch the motherboard.

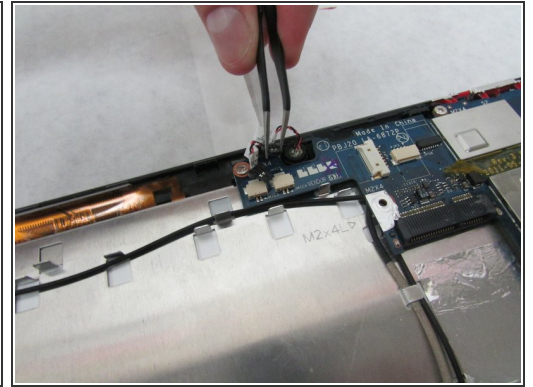
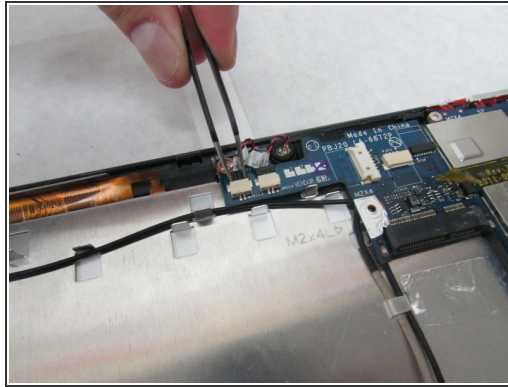
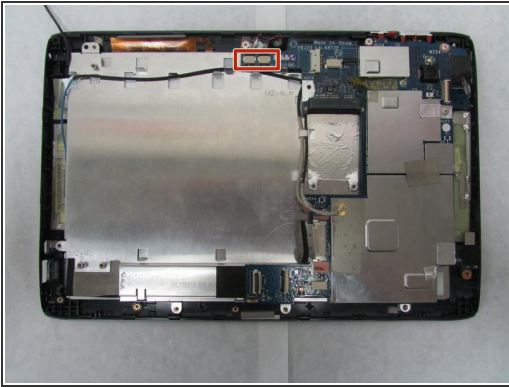
- Use the tweezers to remove the white touchscreen connector with multi-colored wires from the black port just below the power buttons on the motherboard.


Step 22



- Use the plastic opening tool to flip up the locking mechanism for the wide, white port for the thin, orange-brown touchscreen cable just above the charging port.
- Remove the touchscreen board.

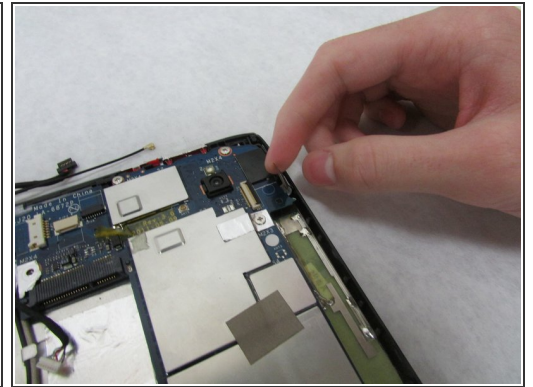
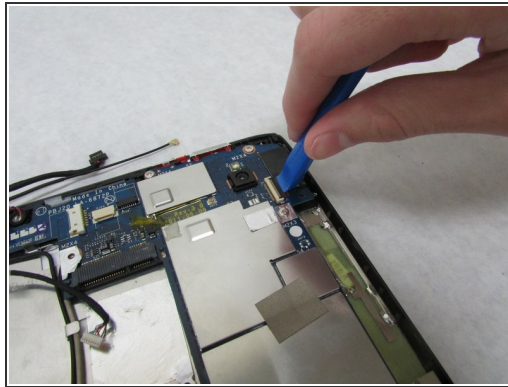
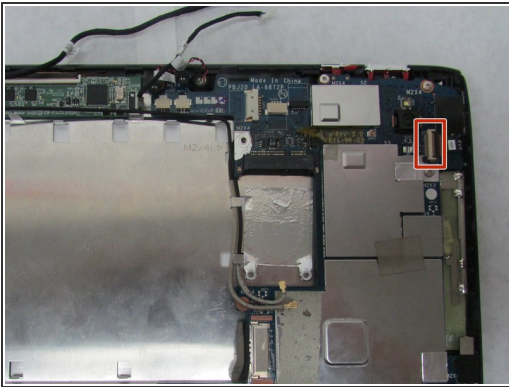
Step 23



 In this step, be careful not to squeeze too hard or scratch the motherboard.

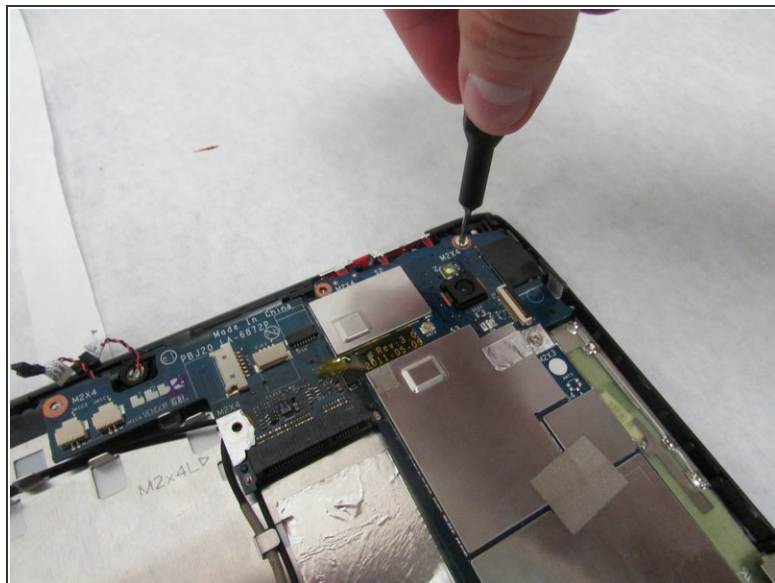
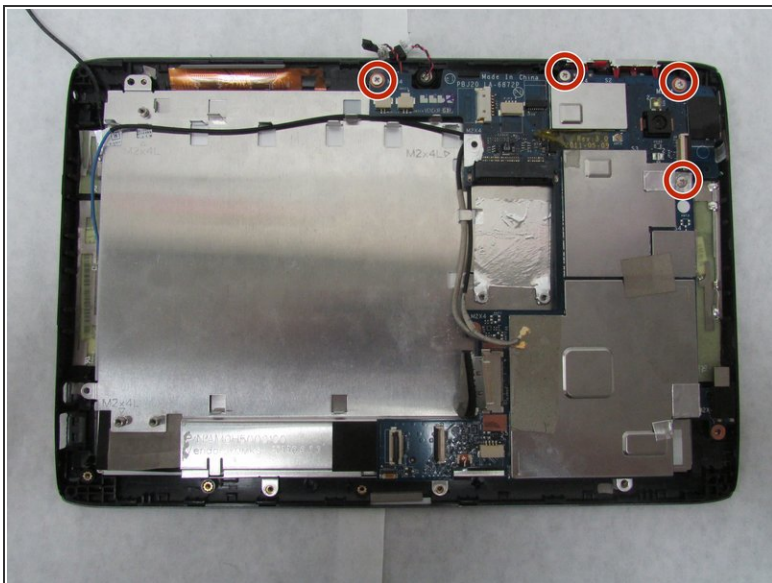
- Use the angled tweezers to disconnect two microphone connectors, which are above the orange-brown touchscreen connector and next to the battery space.

Step 24



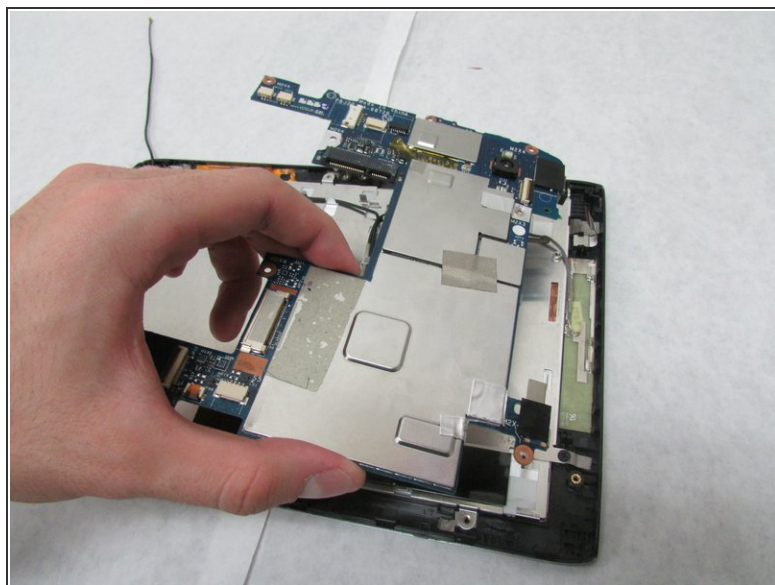
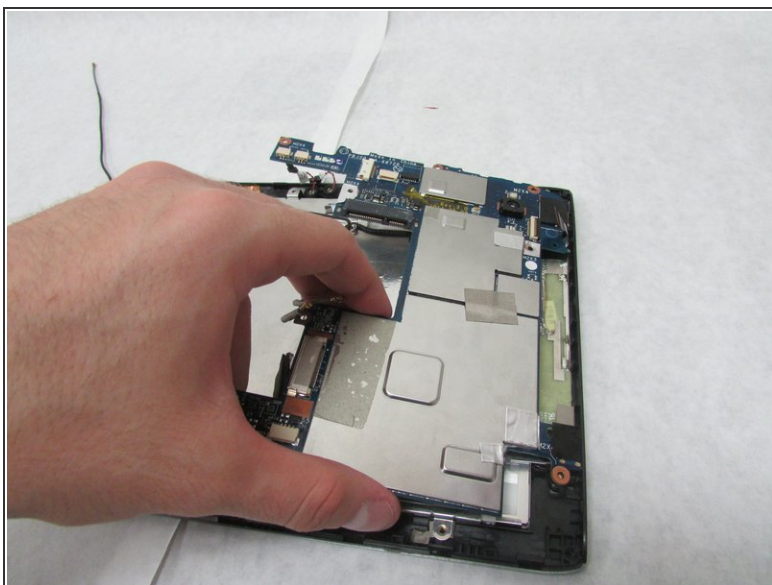
- Use the plastic opening tool to flip up the locking mechanism to the white front camera port just above the rear-facing camera.
- Disconnect the camera cable from the motherboard.

Step 25



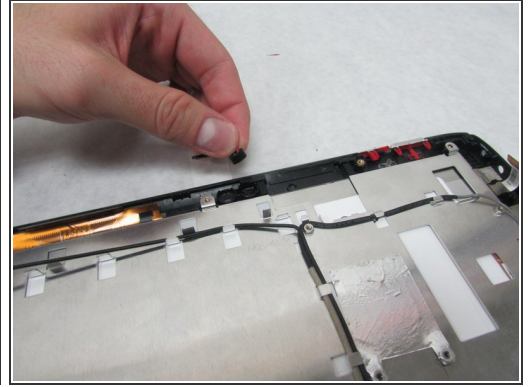
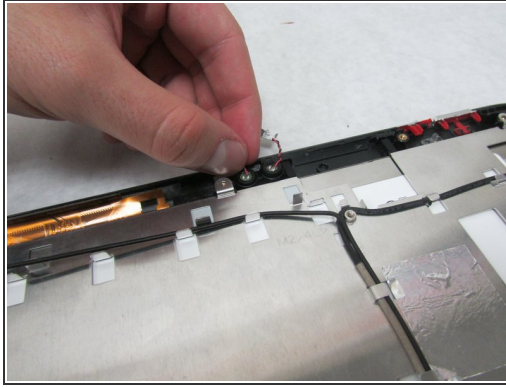
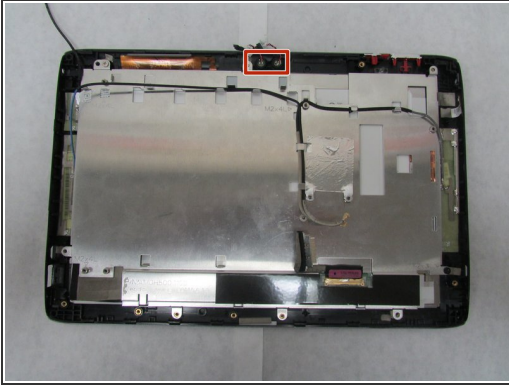
- Use a Phillips #1 screwdriver to unscrew the four 4.0 mm Phillips head screws holding the motherboard in place.

Step 26



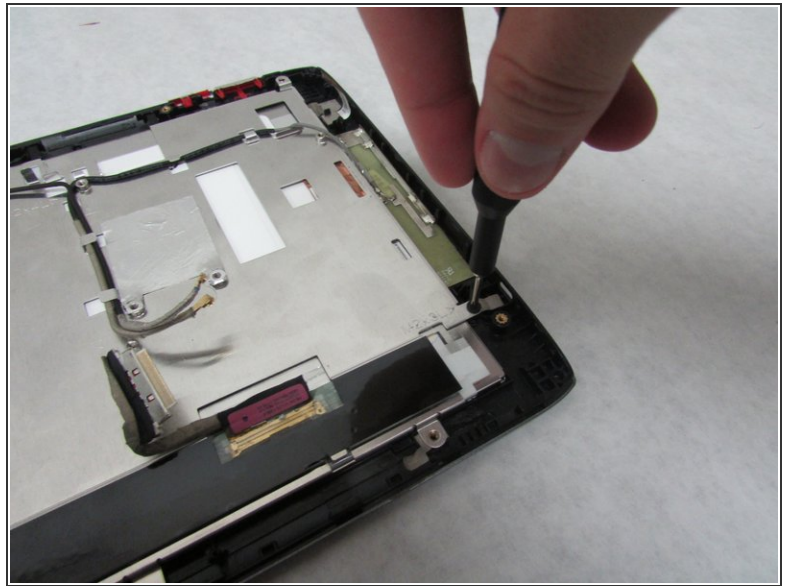
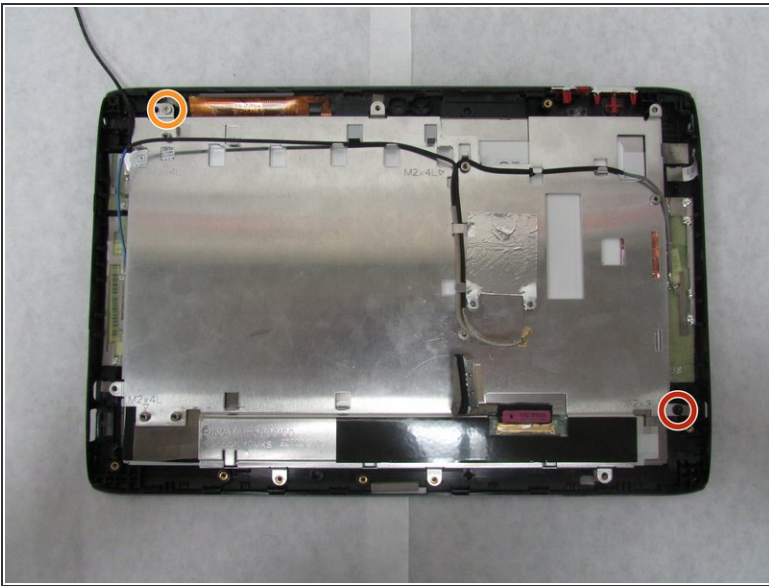
- Remove the motherboard.

Step 27



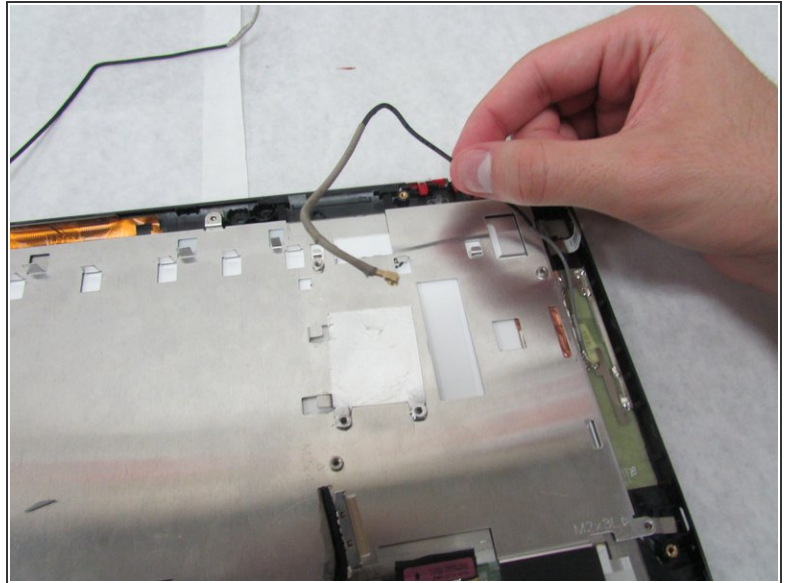
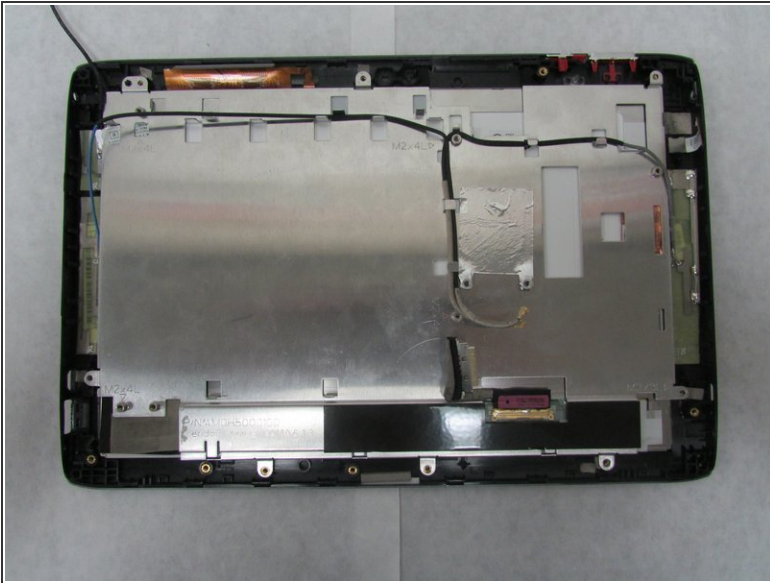
- Remove the two microphones in the middle of the side opposite the docking port.

Step 28



- Use the Phillips #1 screwdriver to unscrew the 3.0 mm Phillips head screw holding the thin metal plate to the device near the Micro-HDMI port.
- Use the Phillips #1 screwdriver to unscrew the 4.0 mm Phillips head screw near the orange-brown touchscreen cable.

Step 29



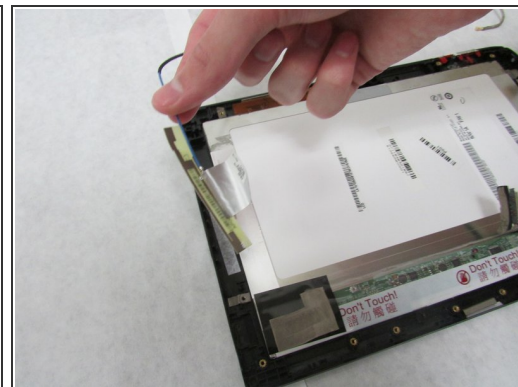
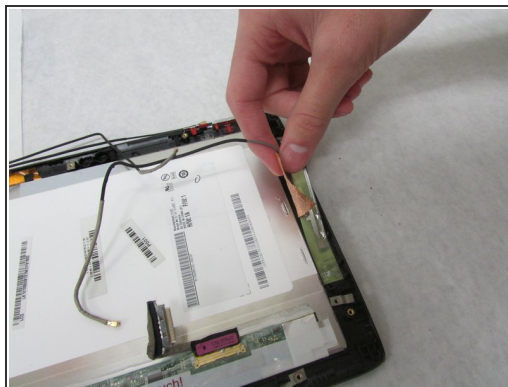
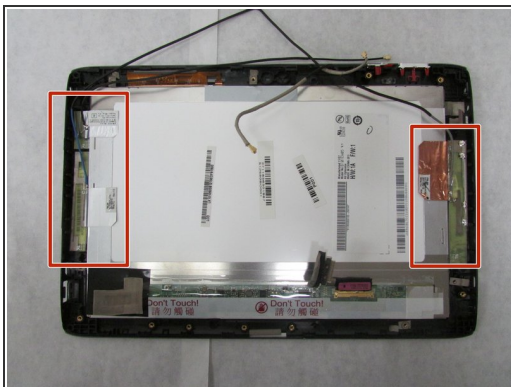
- Move all wires off of the thin, metal plate.


Step 30



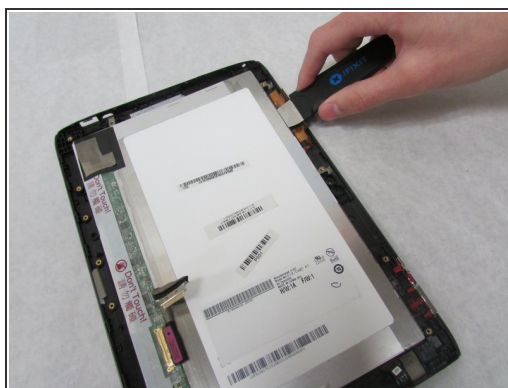
- Remove the metal plate.

Step 31



-  The antennae in the next step are attached with adhesive.
- Remove the three antennae along the shorter sides of the device.

Step 32



- Carefully insert the Jimmy between the display and the glass to break the glue seal.
- Move the Jimmy all the way around the device.

Step 33



- Continue moving the Jimmy around the device until the glue no longer holds the display in place.
- Remove the display.

To reassemble your device, follow these instructions in reverse order.